

TEPP Planning Products Model Procedure

**for First Responder Initial Response to Radiological
Transportation Accidents**

Prepared for the Department of Energy Office of Transportation and Emergency Management





table of contents

Transportation Emergency Preparedness Program (TEPP)

Model Procedure for First Responder Initial Response to Radiological Transportation Accidents



Assumptions	2
1.0 Purpose	2
2.0 Scope	2
3.0 Responsibilities	2
4.0 Records	3
5.0 Frequency	3
6.0 References	3
7.0 Equipment	3
8.0 Location	3
9.0 Safety	3
10.0 Terms/Definitions	3
11.0 Response Flow Charts	4
Response Flow Chart Attachment 1 - Initial Arrival	4
Response Flow Chart Attachment 2 - Victims	5
Response Flow Chart Attachment 3 - Fire	6
Response Flow Chart Attachment 4 - Radiological Event	7



Model Procedure for First Responder Initial Response to Radiological Transportation Accidents

ASSUMPTIONS

This Transportation Emergency Preparedness Program (TEPP) Model Procedure contains the recommended actions for response to transportation incidents involving radioactive material.

The following assumptions are to be considered when reviewing this Model Procedure for initial response:

- The procedures outlined in this document are not all-inclusive but were developed to meet the minimum national guidance for responding to a transportation accident involving radioactive material.
- This Model Procedure is designed for use by trained and qualified emergency responders. Additional procedural requirements may be implemented according to appropriate state, tribal, or local requirements.
- This Model Procedure should be utilized appropriately, according to the conditions encountered, when arriving at a transportation accident involving radioactive material.
- All emergency response personnel have been trained in the use of a National Incident Management System.
- All emergency response organizations are knowledgeable in the use of, and utilize, the Emergency Response Guidebook (ERG) as a tool in determining appropriate response actions.

1.0 PURPOSE

The purpose of this response flow chart is to provide first responders with guidance for response to a transportation accident involving radioactive material.

2.0 SCOPE

Emergency responders who respond to a transportation accident involving radioactive material should perform the following:

- 3.1 Establish Incident Command and size up accident scene using appropriate reference information and sources.
- 3.2 Initiate response actions as outlined in the Emergency Response Guidebook.
- 3.3 Relay information to state, tribal, or local officials as required by jurisdictional policies, plans, and procedures.
- 3.4 Maintain accident scene control until relieved by a higher authority.
- 3.5 Provide accident scene turnover to the relieving authority.

4.0 RECORDS

Insert your jurisdictional policy for records retention here.



Model Procedure for First Responder Initial Response to Radiological Transportation Accidents



5.0 FREQUENCY

Use this flow chart as needed.

6.0 REFERENCES

- 6.1 Emergency Response Guidebook (ERG)
- 6.2 International Association of Firefighters - Training for Hazardous Materials Response: Radiation
- 6.3 U. S. Department of Energy Modular Emergency Response Radiological Transportation Training (MERRTT)
- 6.4 National Incident Management System (NIMS)

7.0 EQUIPMENT

As outlined in the ERG and/or as required by state, tribal or local procedures, plans, or policies.

8.0 LOCATION

Use this Model Procedure as appropriate based upon incident location.

9.0 SAFETY

- 9.1 Respond and perform duties within safety guidelines specified within the Emergency Response Guidebook.
- 9.2 Involve appropriate state, tribal, or local Radiation Authority as soon as possible for assistance with disposition of any contaminated/radiological material.

10.0 TERMS/DEFINITIONS

Contamination - As referred to in this document, contamination is undesired radioactive material that is deposited on the surface of or inside structures, areas, objects, or people.

Decontamination - The reduction or removal of contaminating radioactive material from a structure, area, object, or person.

Incident Commander (IC) - The person responsible for all decisions relating to the management of the incident.

Incident Command System (ICS) - An organized approach to control and manage operations at an emergency incident.

National Incident Management System (NIMS) - A comprehensive, national approach to incident management applicable to all jurisdictional levels.

Radiation Authority - A federal, state, or tribal agency designated official. Responsibilities include evaluating radiological hazard conditions during normal operations and emergencies.





Model Procedure for First Responder Initial Response to Radiological Transportation Accidents

11.0 RESPONSE PROCEDURE

See the following First Response Flow Charts for Transportation Accidents Involving Radioactive Materials (Attachments 1 through 4).

RESPONSE FLOW CHART ATTACHMENT 1

Initial arrival on scene

Approach incident cautiously from upwind and upslope. Stay clear of all spills, vapors, fumes and smoke.

Establish IC and perform scene "size up." Visually assess the accident from a distance. Try to identify the following:

- Spills, leaks, or fire
- Apparent hazardous properties
- Victims
- Type of vehicle and containers involved
- Placards and markings
- Container/package damage
- Any person knowledgeable of the scene
- Shipping papers
- Runoff problems; work area hazards; exposure problems
- Entry point

Notify Emergency Communications Center of the situation and assume position of Incident Commander until relieved by higher authority.

Evaluate information and consult ERG to identify hazards and material involved. Follow guidelines in ERG until other assistance arrives.

Establish initial isolation zone 75 feet upwind of entry point. Establish lines of communication. Priorities for first responders include the following:

- Safety of response personnel
- Rescue of injured personnel
- Secure the incident scene
- Isolate the area and deny entry
- Ensure safety of people and environment
- Monitor radiation levels (if equipment is available)
- Restrict entry until Radiation Authority or radiological emergency response team arrives

Establish control zones: hot, warm, and cold, upwind and upslope from hazard area.

Don protective clothing and SCBA

Are there victims?

Yes

No

Use Response Flow Chart Attachment 1

Monitor the situation and standby

Is there a fire?

Yes

No

Use Response Flow Chart Attachment 2

Monitor the situation and standby

Is it a radiological event?

Follow guidelines in the ERG

Use Response Flow Chart Attachment 3

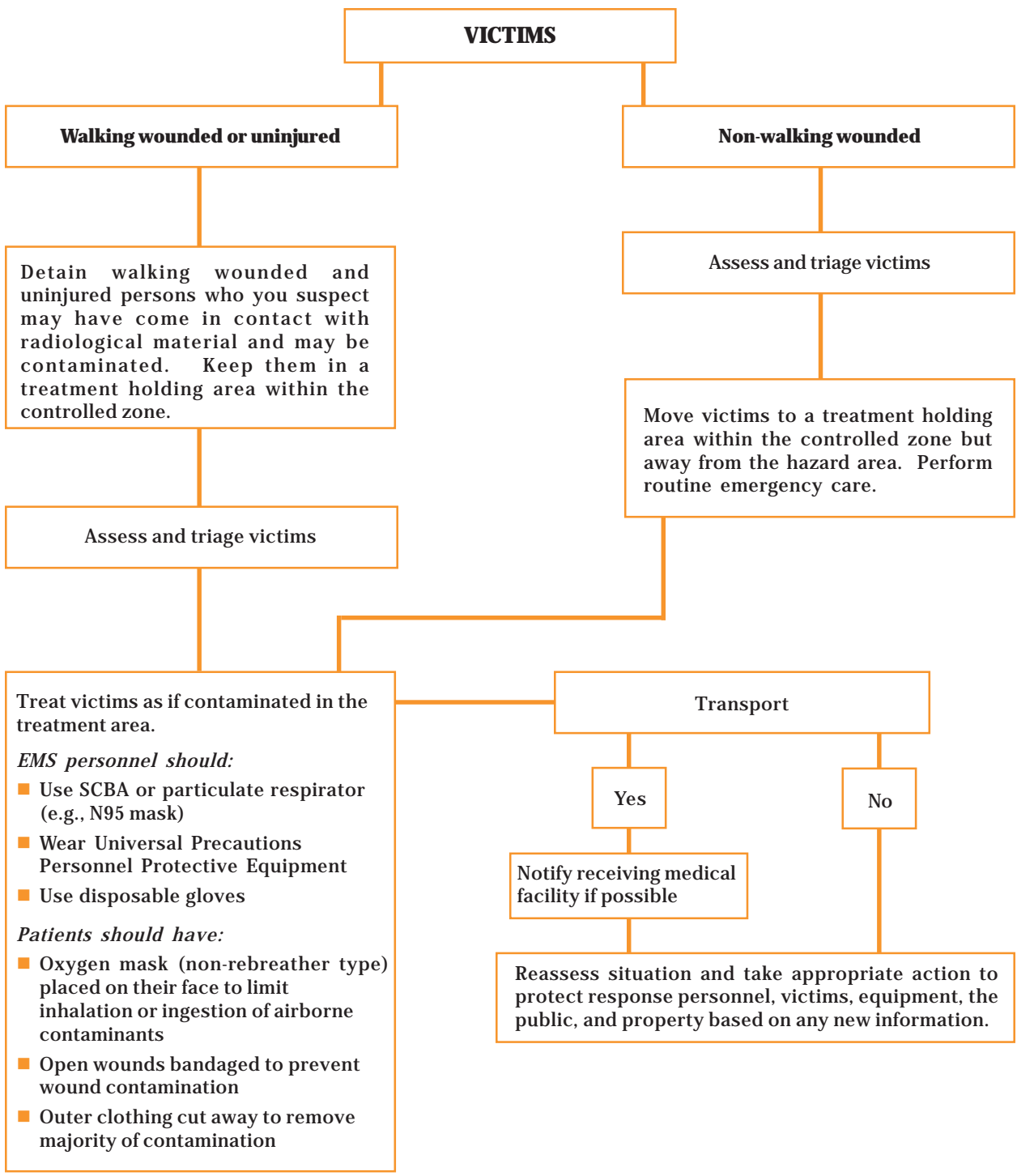




Model Procedure for First Responder Initial Response to Radiological Transportation Accidents

RESPONSE FLOW CHART ATTACHMENT 2

Accident involving victims



DEPARTMENT OF ENERGY

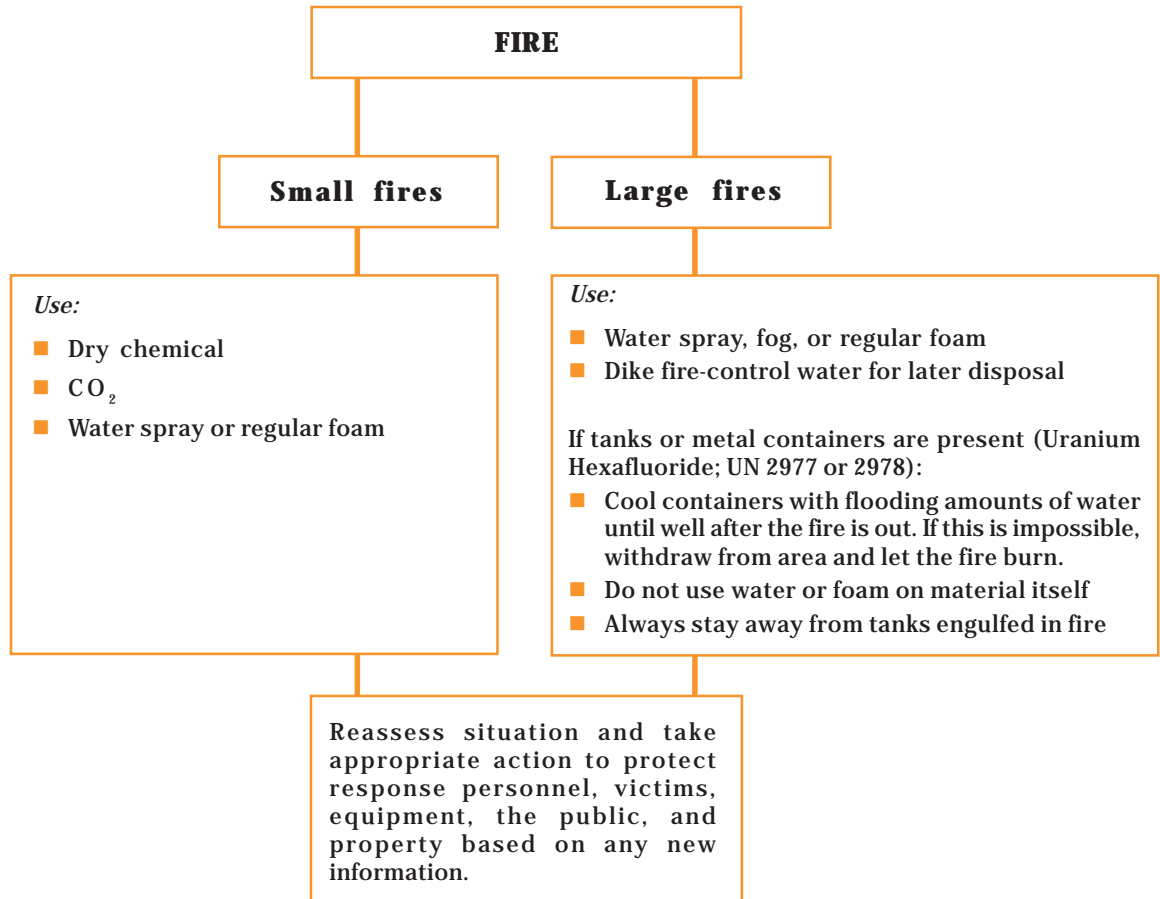




Model Procedure for First Responder Initial Response to Radiological Transportation Accidents

RESPONSE FLOW CHART ATTACHMENT 3

Accident involving a fire



DEPARTMENT OF ENERGY

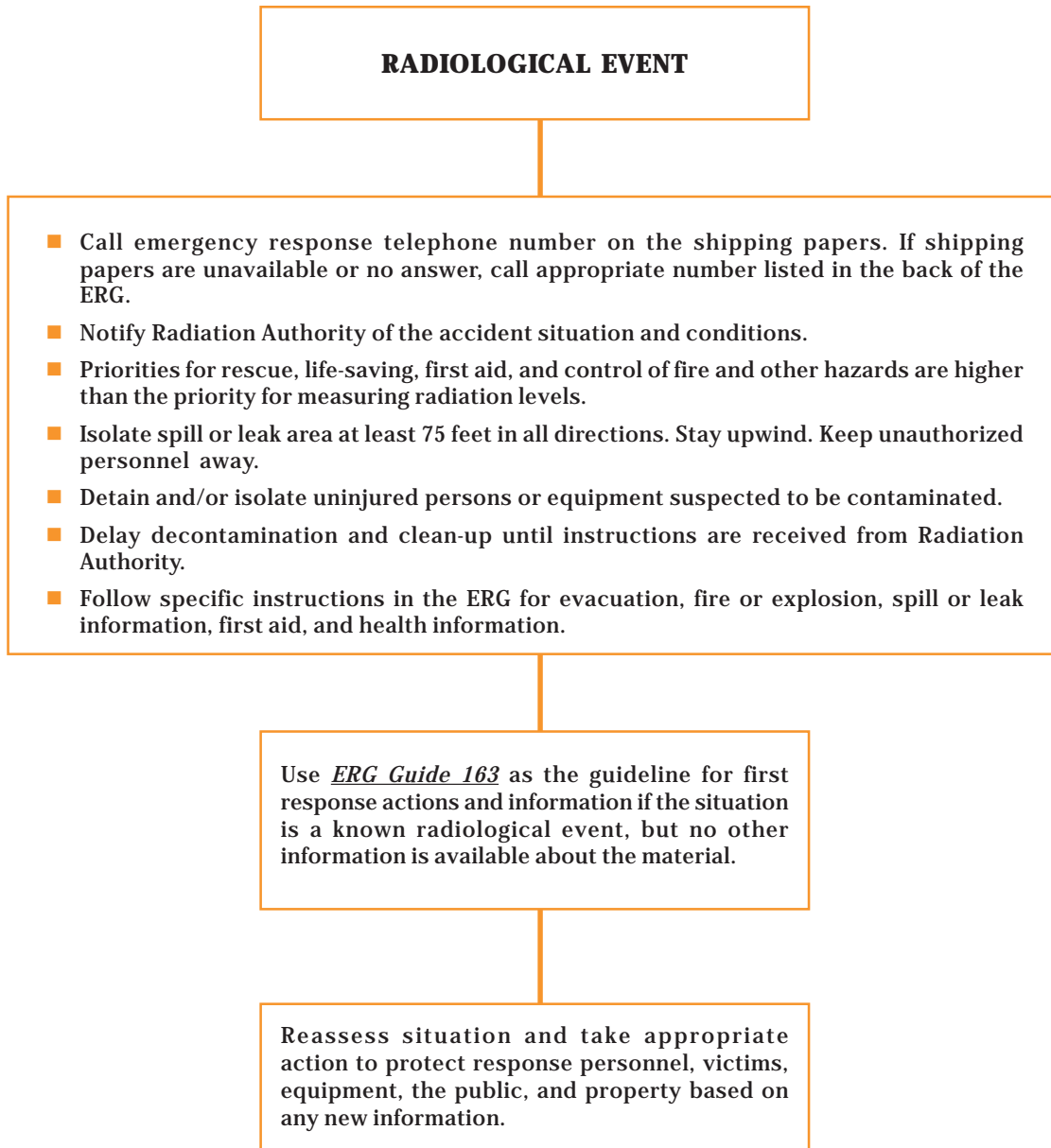




Model Procedure for First Responder Initial Response to Radiological Transportation Accidents

RESPONSE FLOW CHART ATTACHMENT 4

Accident involving radiological material



DEPARTMENT OF ENERGY

