

# Mound Reindustrialization Workshop Tri-Cities (Hanford) Case Study

Tuesday, May 20, 2014





# Tri-City Development Council (TRIDEC)

- Formed in 1963
- Private Not-for-Profit
- 335 Members
- Contracts with 4 Cities, 2 Counties, 3 Port Districts
- 42 Member Board of Directors



# TRIDEC Major Programs

- Business Recruitment
- Business Retention & Expansion (BRE)
- Mid-Columbia Energy Initiative (MCEI)
- Federal Programs



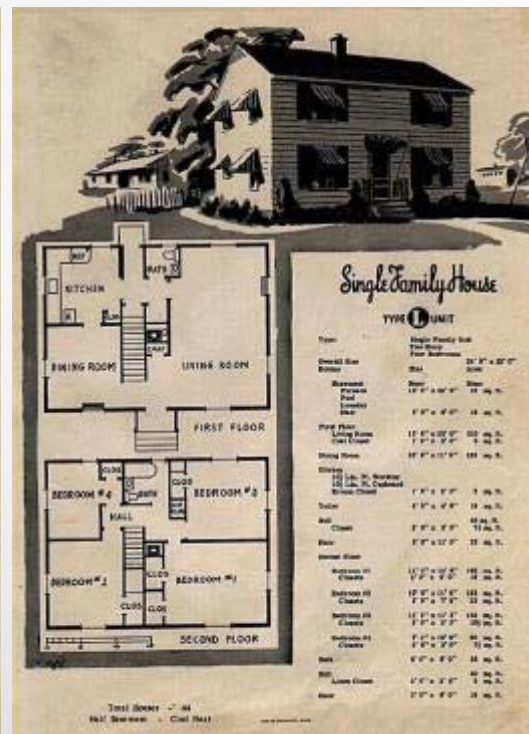
# Long History of Land Transfers



# Long History of Land Transfers

- 1958 City of Richland Transferred from AEC to Self Governance

# Housing, Schools, Churches and Hospital



**KADLEC**



# Columbia Point

Former Landfill and Sewerage Treatment Plant





# Long History of Land Transfers

- 1958 City of Richland Transferred from AEC to Self Governance
- 1961 290 Acre “Camp Hanford” Sold Through Corps of Engineers to Port of Benton

# Port of Benton Officially Declared a “Nuclear Port”



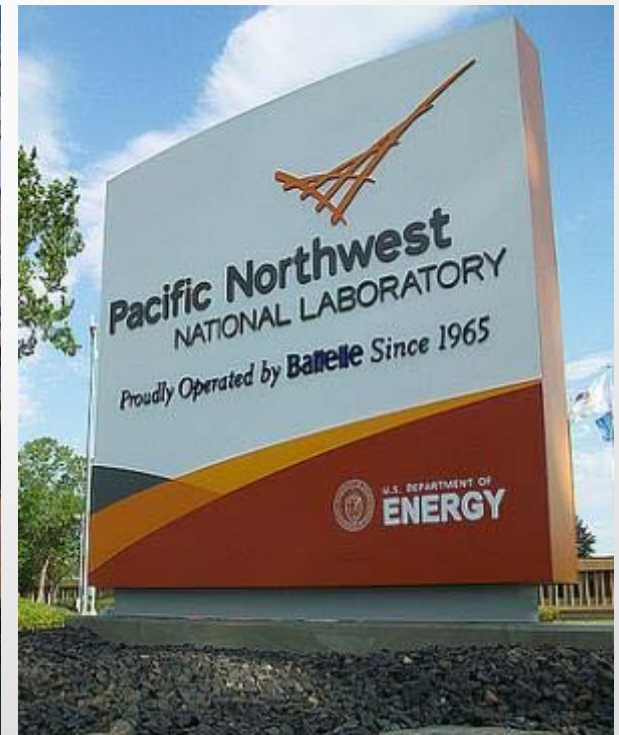
# Remainder of 290 Acre Site Home to More than 20 Companies





# Pacific Northwest National Laboratory

## 275 Acres Sold by City of Richland





# Long History of Land Transfers

- 1958 City of Richland Transferred from AEC to Self Governance
- 1961 290 Acre "Camp Hanford" Sold Through Corps of Engineers to Port of Benton
- 1962–1975 **Approximately 650 Acres Transferred to Port of Benton from AEC through FAA and GSA**



# Today Richland Airport

200 Based Planes Including MedStar Life Flight



# Long History of Land Transfers

- 1958 City of Richland Transferred from AEC to Self Governance
- 1961 290 Acre "Camp Hanford" Sold Through Corps of Engineers to Port of Benton
- 1962–1975 Approximately 650 Acres Transferred to Port of Benton from AEC through FAA and GSA
- 1970's **Approximately 6,000 acres acquired by City of Richland. Land originally held by AEC but transferred through BLM and State of Washington.**

# Horn Rapids Industrial Park







# Long History of Land Transfers

- 1958 City of Richland Transferred from AEC to Self Governance
- 1961 290 Acre "Camp Hanford" Sold Through Corps of Engineers to Port of Benton
- 1962–1975 Approximately 650 Acres Transferred to Port of Benton from AEC through FAA and GSA
- 1970's Approximately 6,000 acres acquired by City of Richland. Land originally held by AEC but transferred through BLM and State of Washington.
- 1996 **72 Acres of Hanford 3000 Area Transferred by Maritime Administration to Port of Benton**

# Richland Innovation (Industrial) Center

Home to 18 Companies





# Tri-Cities Research District



# Long History of Land Transfers

- 1958 City of Richland Transferred from AEC to Self Governance
- 1961 290 Acre "Camp Hanford" Sold Through Corps of Engineers to Port of Benton
- 1962–1975 Approximately 650 Acres Transferred to Port of Benton from AEC through FAA and GSA
- 1970's Approximately 6,000 acres acquired by City of Richland. Land originally held by AEC but transferred through BLM and State of Washington.
- 1996 72 Acres of Hanford 3000 Area Transferred by Maritime Administration to Port of Benton
- **1998 DOE Transferred 760 Acres and Buildings of Hanford 1100 Area to Port of Benton**

# Port of Benton Manufacturing Mall

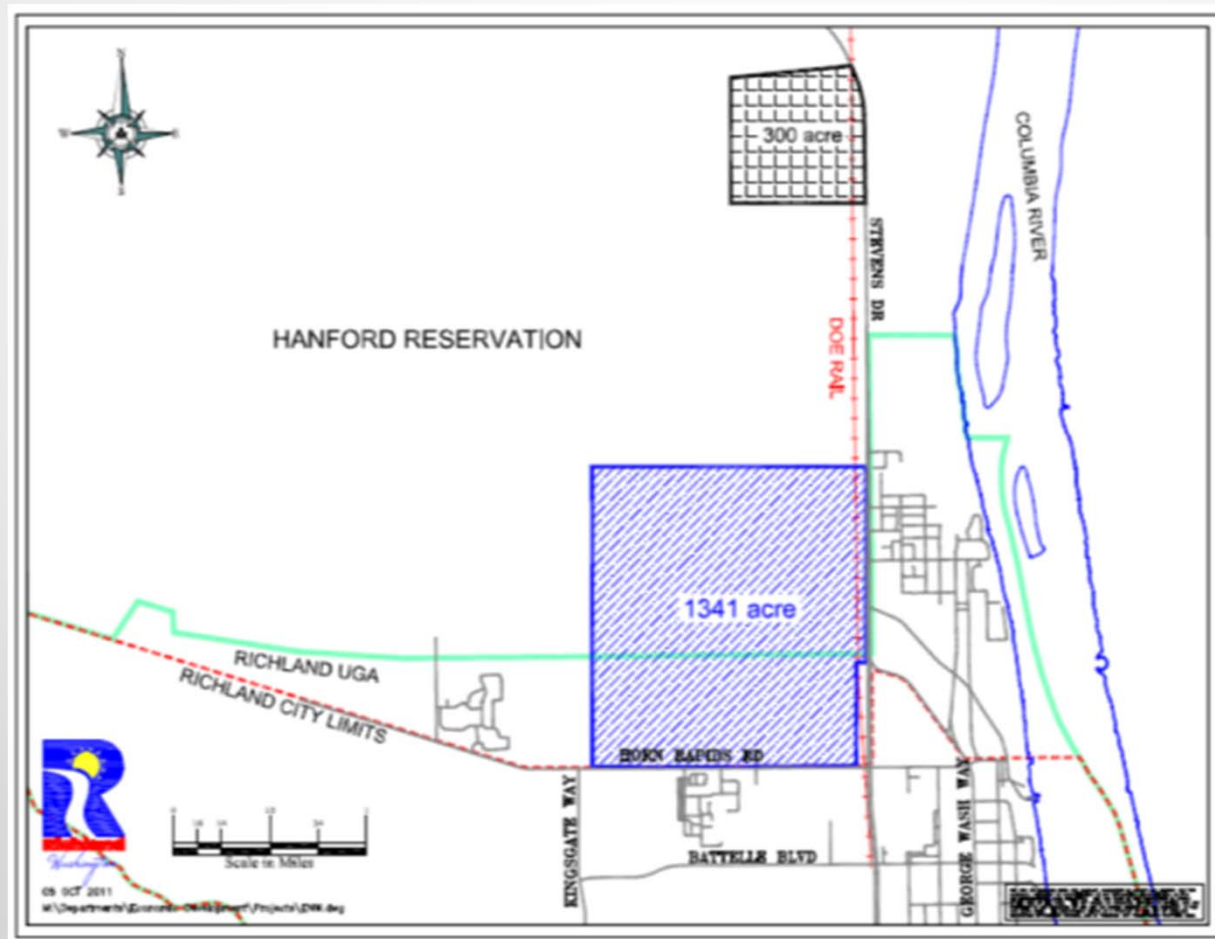
16 Tenants



# Long History of Land Transfers

- 1958 City of Richland Transferred from AEC to Self Governance
- 1961 290 Acre "Camp Hanford" Sold Through Corps of Engineers to Port of Benton
- 1962–1975 Approximately 650 Acres Transferred to Port of Benton from AEC through FAA and GSA
- 1970's Approximately 6,000 acres acquired by City of Richland. Land originally held by AEC but transferred through BLM and State of Washington.
- 1996 72 Acres of Hanford 3000 Area Transferred by Maritime Administration to Port of Benton
- 1998 DOE Transferred 760 Acres and Buildings of Hanford 1100 Area to Port of Benton
- 2011 **TRIDEC Requests DOE Transfer 1,341 Acres to CRO for Industrial Development**

# TRIDEC Land Request





# Contact Information:

## Carl F. Adrian, President/CEO

[Email] [cadrian@tridec.org](mailto:cadrian@tridec.org)

[Phone] 509-735-1000

[Website] [www.tridec.org](http://www.tridec.org) /  
[www.midcolumbiaenergyinitiative.org](http://www.midcolumbiaenergyinitiative.org)

