



WELDON SPRING SITE
A Legacy of Service



Missouri State Parks – a division of the
Missouri Department of Natural Resources

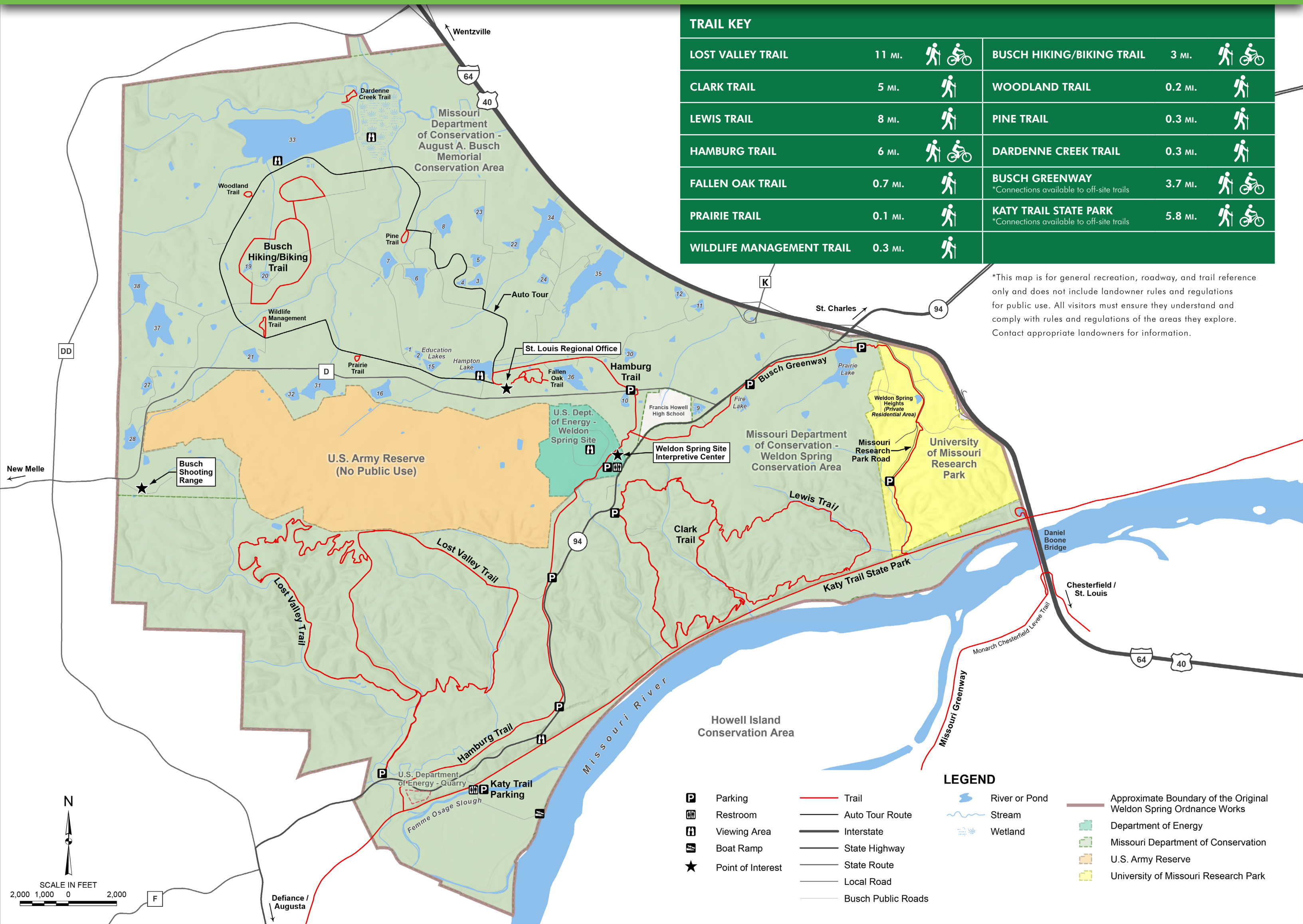


U.S. DEPARTMENT OF
ENERGY | Legacy
Management



BUSCH-WELDON GREENSPACE

A public partnership to preserve history, conserve nature, and provide outdoor recreational spaces.



Contact Information:

U.S. Department of Energy Office of Legacy Management – Weldon Spring Site

- **PHONE** (636) 300-2601
- **EMAIL** WSInterpretiveCenter@lm.doe.gov
- **WEB** <https://www.lm.doe.gov/Weldon>
- **MAIL** 7295 Highway 94 South, St. Charles, MO 63304

Missouri Department of Conservation – St. Louis Regional Office

- **PHONE** (636) 441-4554
- **EMAIL** StLouis@mdc.mo.gov
- **WEB** <https://www.mdc.mo.gov>
- **MAIL** 2360 Highway D, St. Charles, MO 63304

Missouri State Parks – Katy Trail State Park

- **PHONE** (573) 449-7402
- **EMAIL** moparks@dnr.mo.gov
- **WEB** <https://mostateparks.com/park/katy-trail-state-park>
- **MAIL** 5901 South Hwy. 163, Columbia, MO 65203

Great Rivers Greenway

- **PHONE** (314) 436-7009
- **EMAIL** info@grgstl.org
- **WEB** <https://greatriversgreenway.org/>
- **MAIL** 6178 Delmar Boulevard, St. Louis, MO 63112

