



U.S. Department of Energy
Lighting R&D Workshop

Lighting Systems Data: What Are We Learning

A future perspective

By Sarah Dreger





Without change there is no innovation, **creativity**, or incentive for improvement. Those who initiate change will have a better opportunity to manage the change that is inevitable.

William Pollard



Sarah Dreger

Senior Principal, Discipline Leader Buildings Digital Practice Stantec



- Originally trained to be classical musician.
- Serial hobbyist.
- Strong mechanical background; emphasis on design build and construction.
- Actively managing projects and personnel in a dynamic field for nearly 20 years.
- Fluent in 8 programming languages.
- Expert level proficiency in too many applications to list and tinkerer of gadgets and gizmos.
- Global leader of technology for Stantec Buildings Practice aka Digital Practice.
- Crème brulee is my kryptonite.

A FEW AREAS OF FOCUS



Digital Twin

Connecting Physical with
Digital (IoT)

Visual Automation

Driving Design Efficiency

Machine Learning

Bringing the Future of
Design to our Clients

Virtual Reality

Engaging our Clients
Informed Decision Making

Generative Design

Computational Modeling
to Deliver the Best Design

Business Intelligence

Research/Data Informing
Design and Business

V
I
S
U
A
L
I
Z
E



Finished Space



Virtual Reality (VR)



If you have iOS 11+ installed, simply open your camera and view the barcode



REALITY CAPTURE

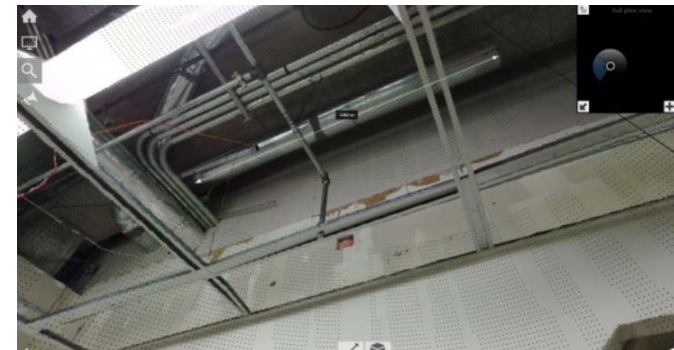
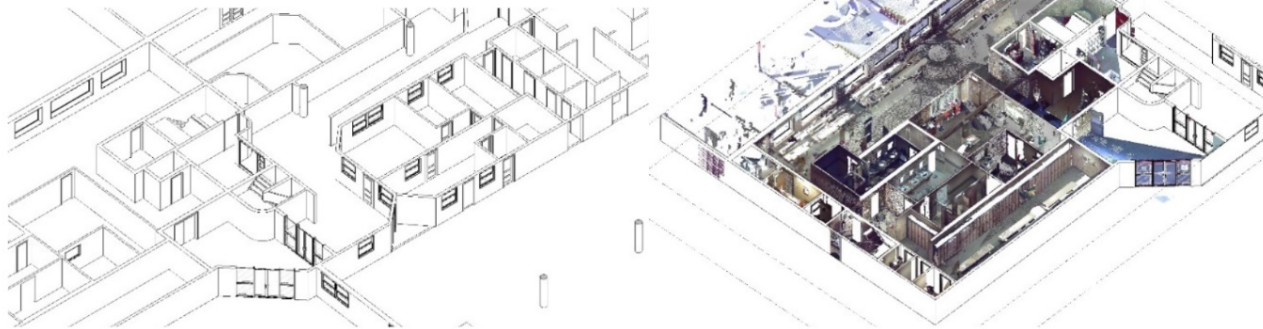
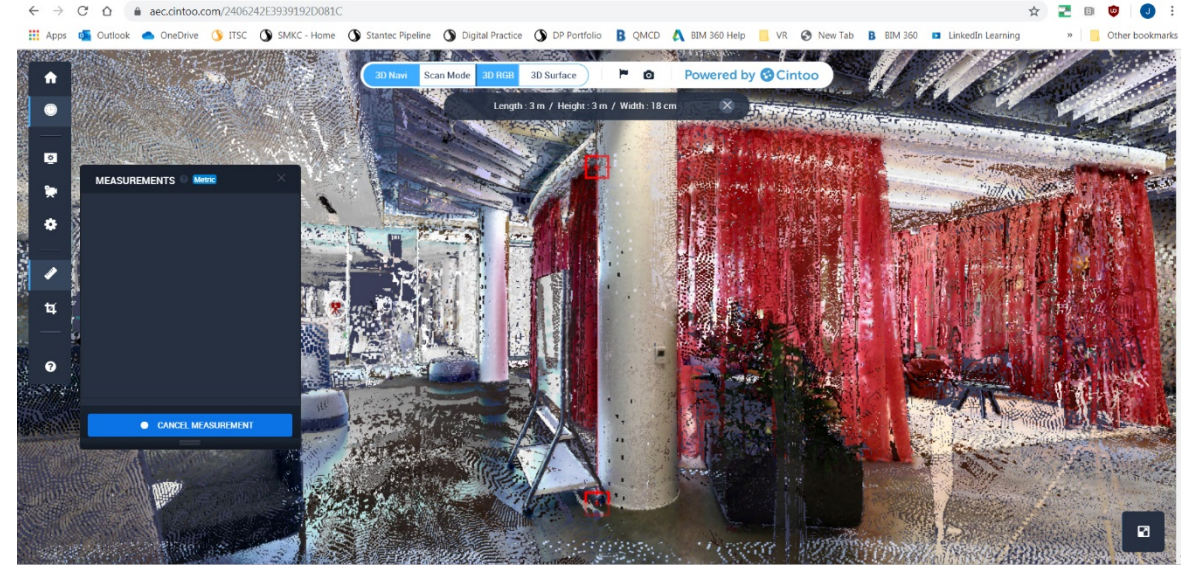


Laser scanning

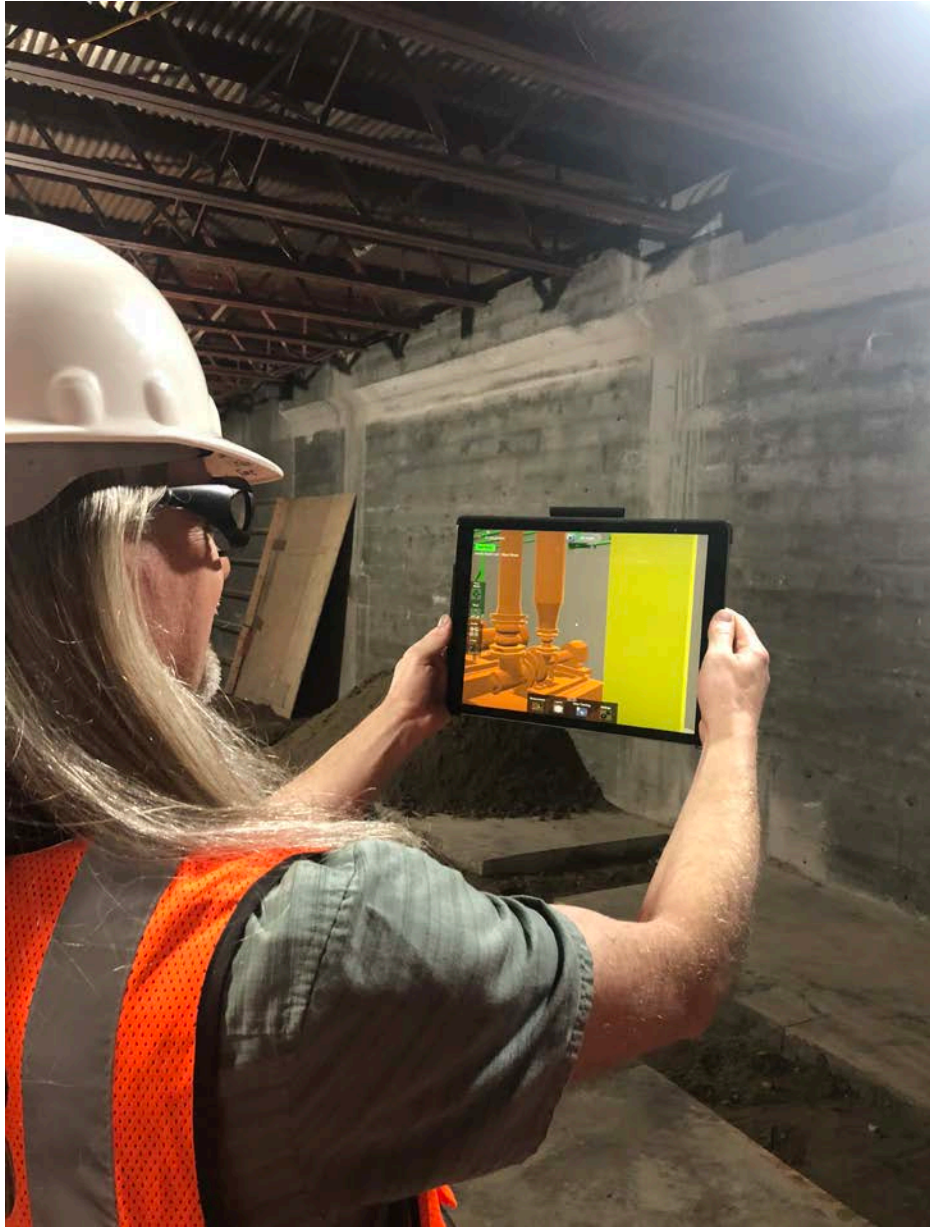
Web-enabled access to
imagery

Query point cloud

Conversion to Revit



AUGMENTED REALITY



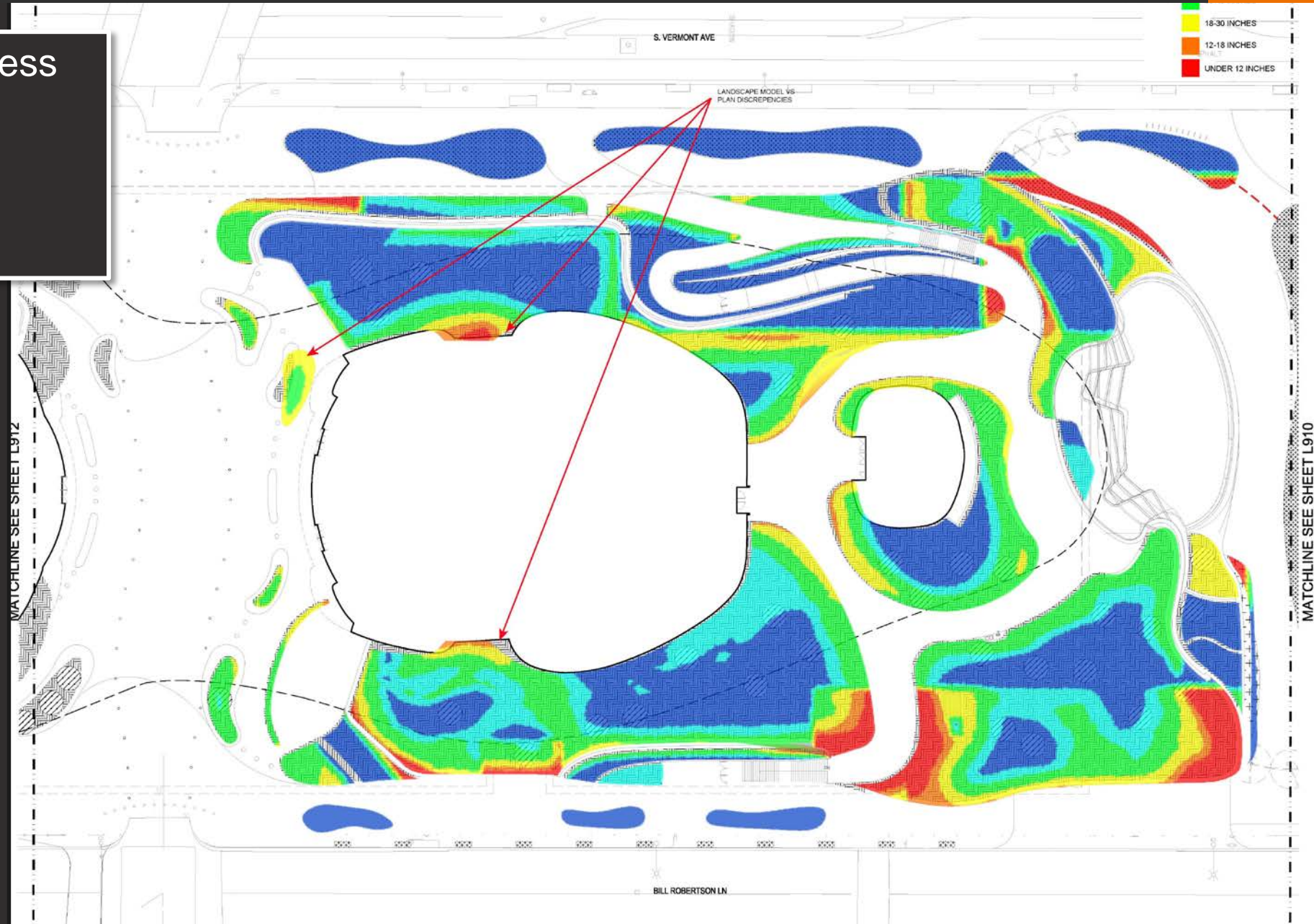


**DATA +
AUTOMATION =
GENERATIVE DESIGN**

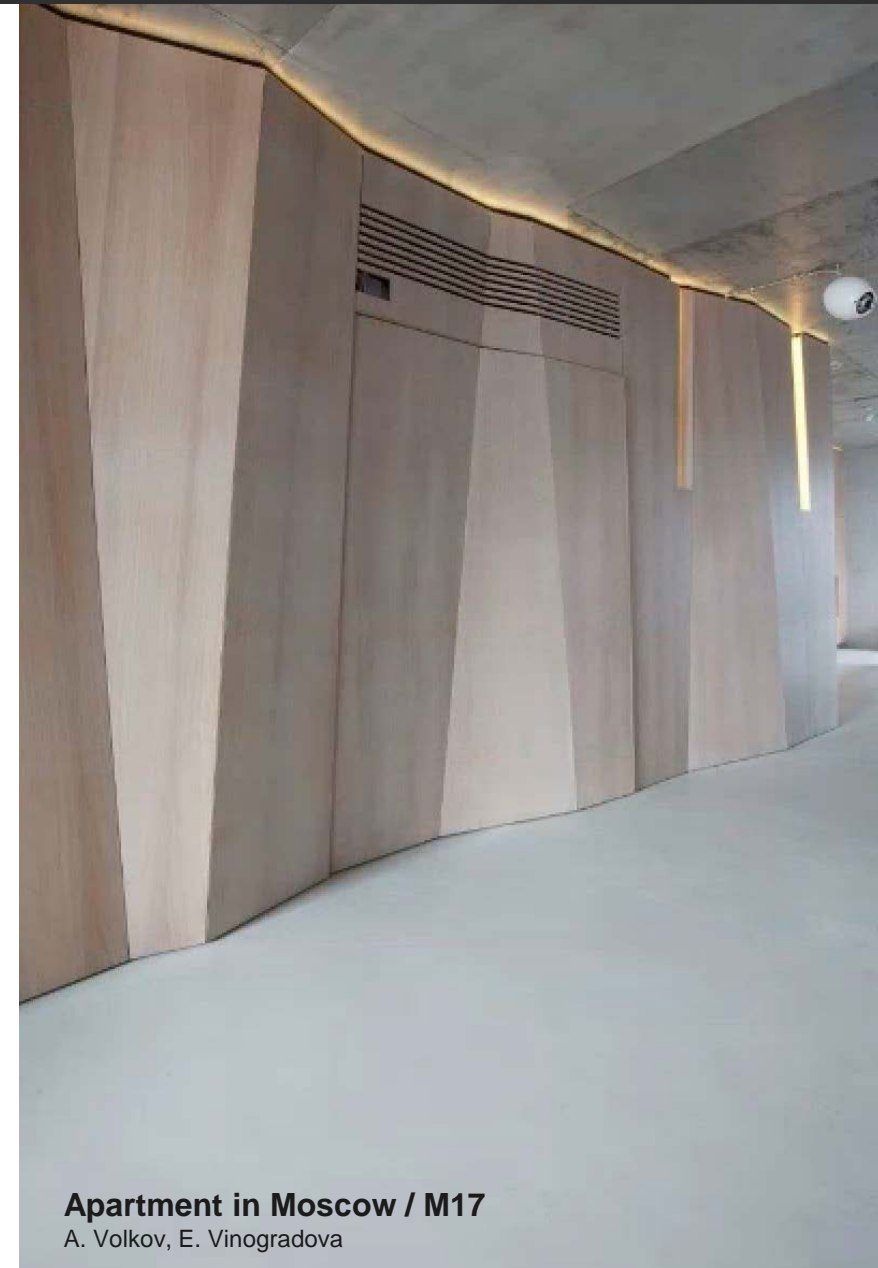
DRIVING DESIGN: Optioneering



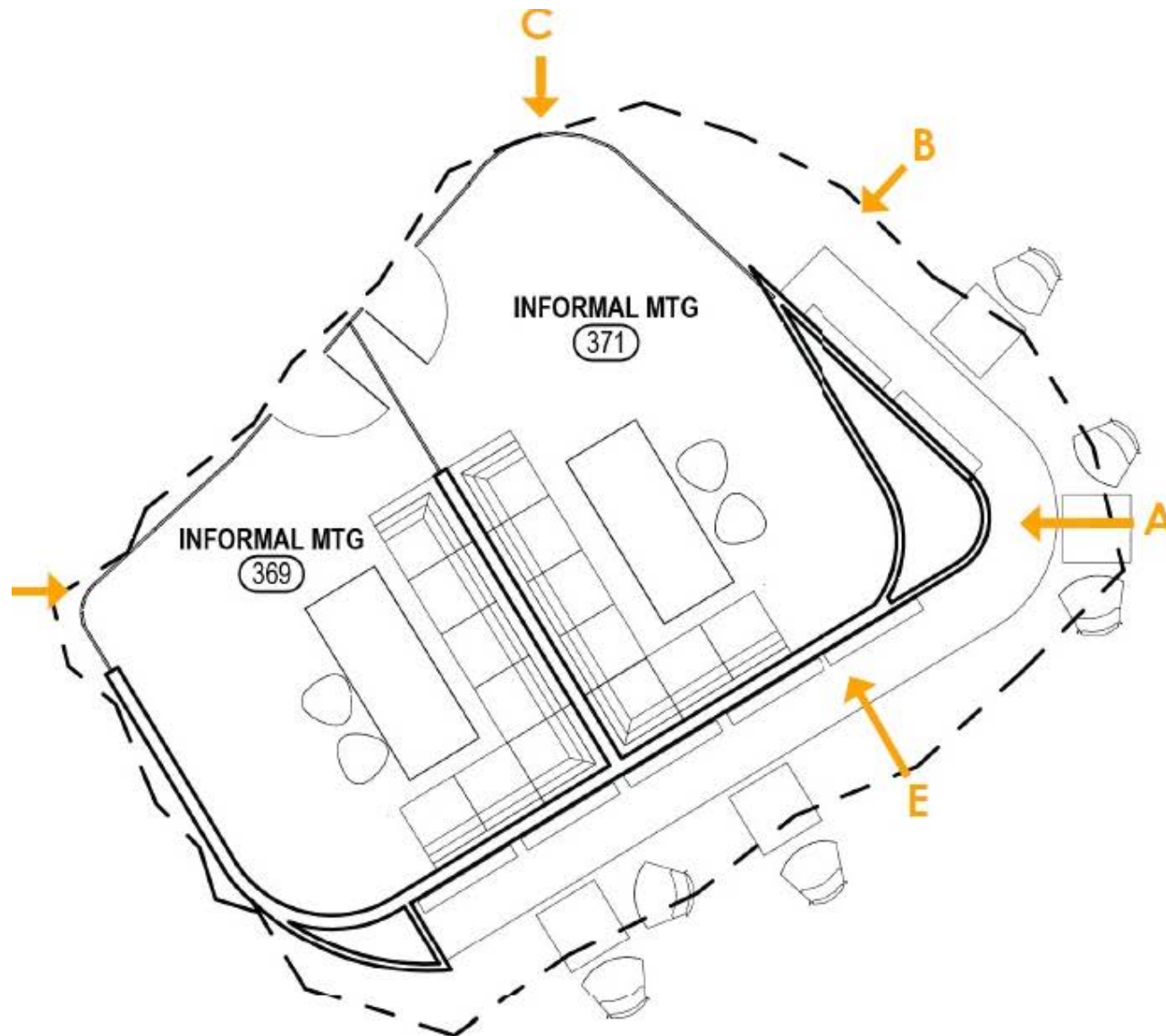
- Automate repetitive process
- Run complex simulation
- Create and Share
- Many communities and resources available



DRIVING DESIGN: Inspiration



DRIVING DESIGN: Initial Sketch

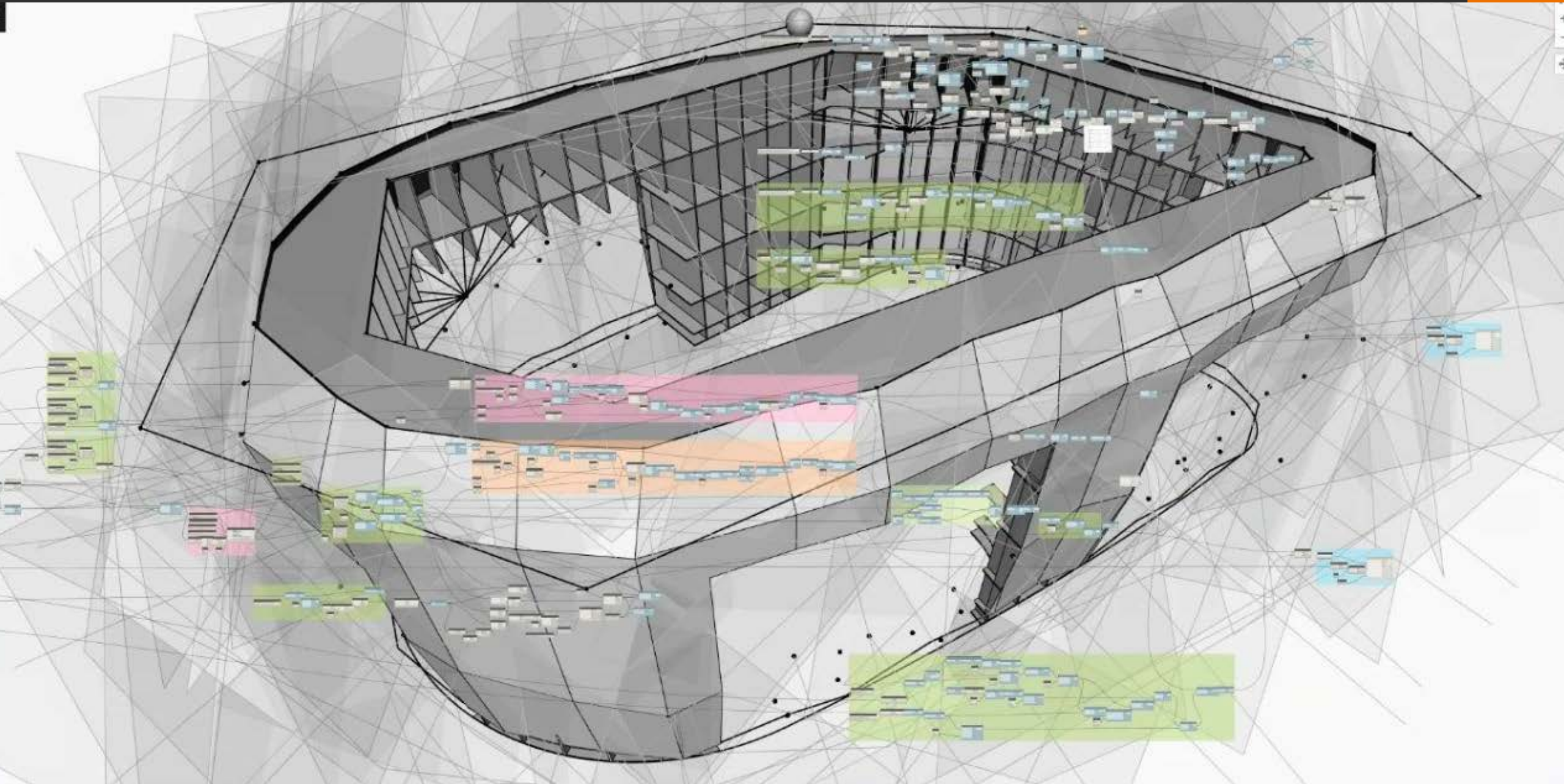


Banquette Seating:



INFORMAL SEATING
VIEW A

DRIVING DESIGN: Visual Automation

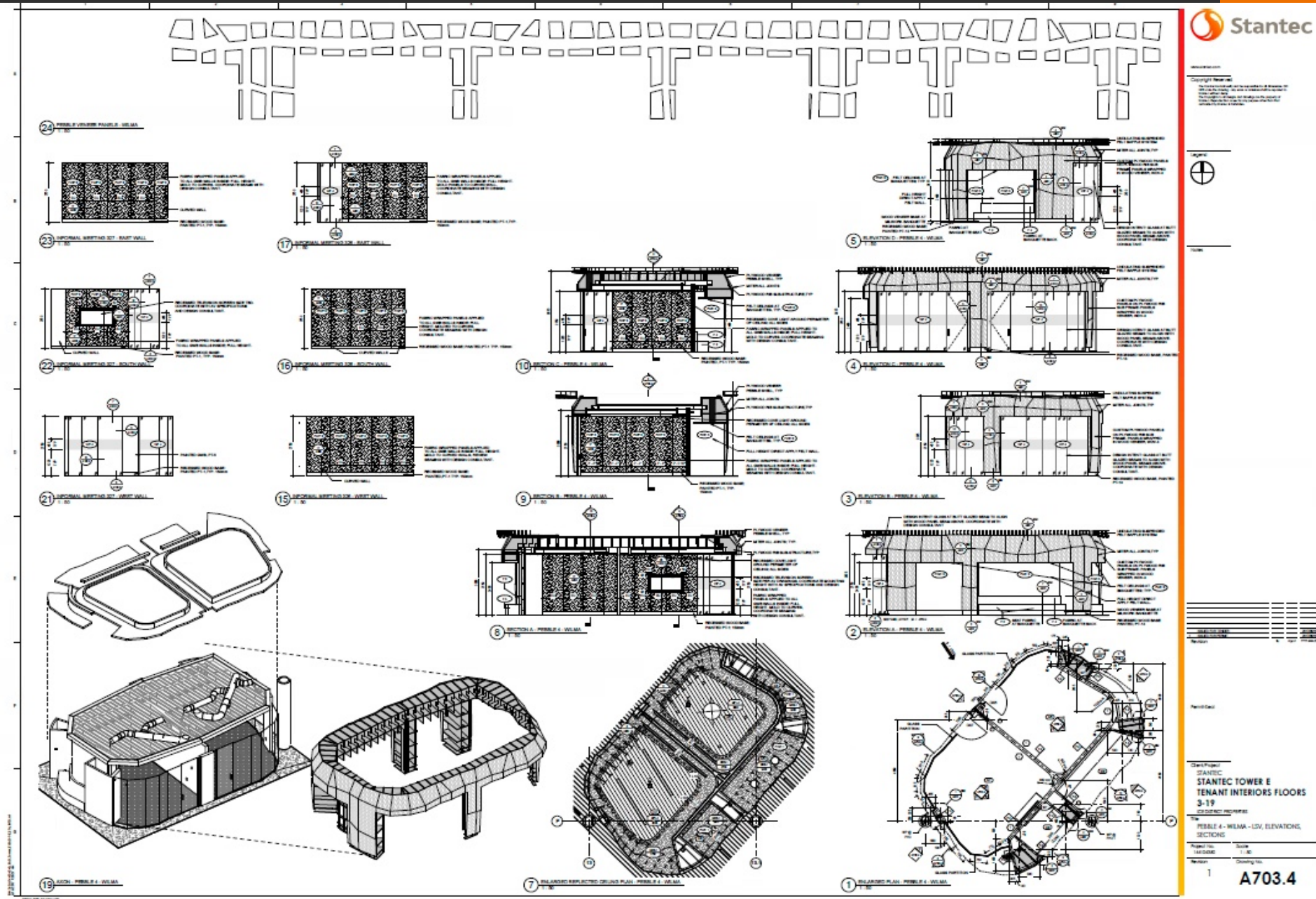


DRIVING DESIGN: Documentation



Distributed Team

- Building Location
 - Edmonton, AB
- Design Team
 - Edmonton, AB
 - Calgary, AB
 - Boston, MA
 - Vancouver, BC



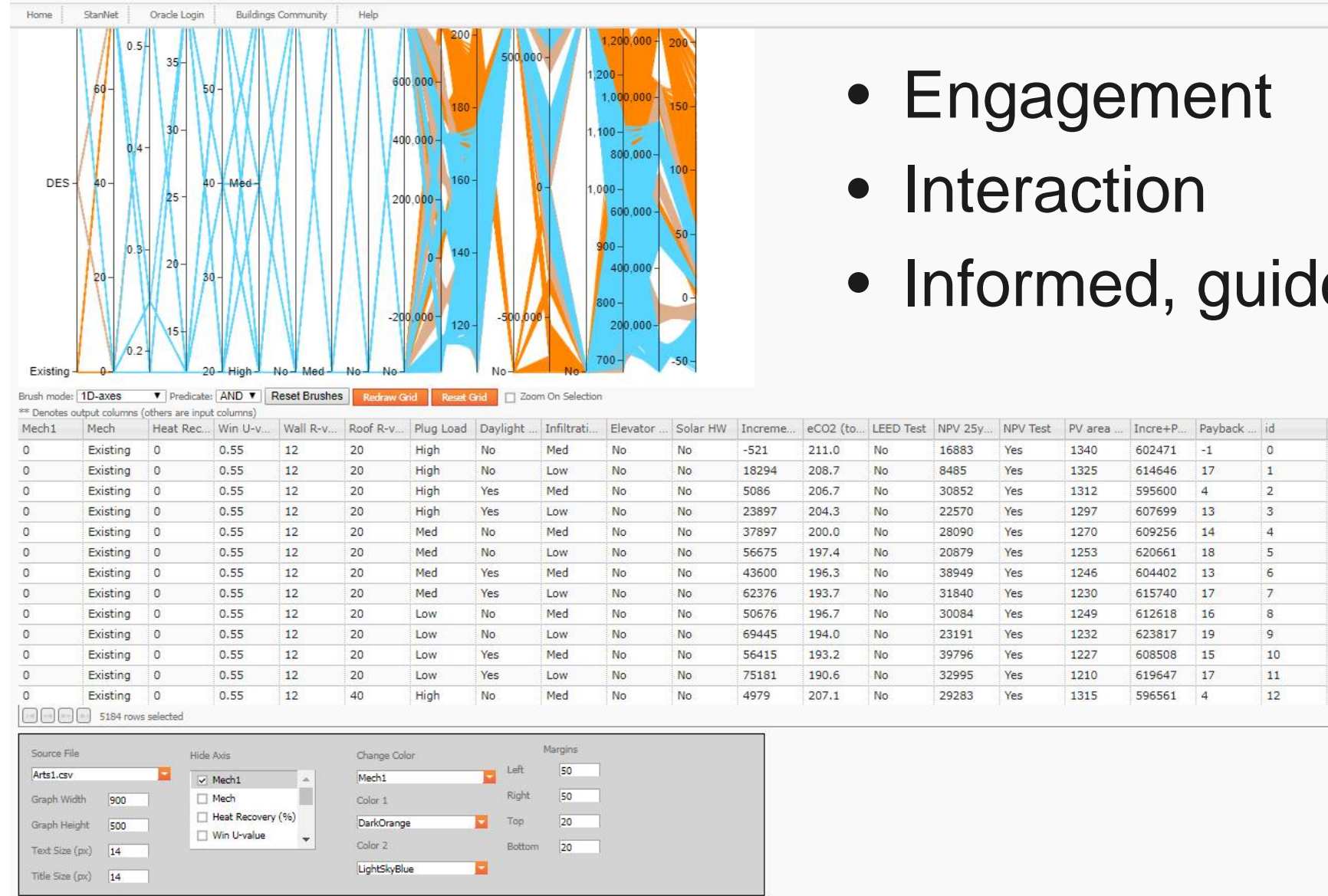
DRIVING DESIGN: Physical Mock-Up



BI: Dynamic Client Facing Tools

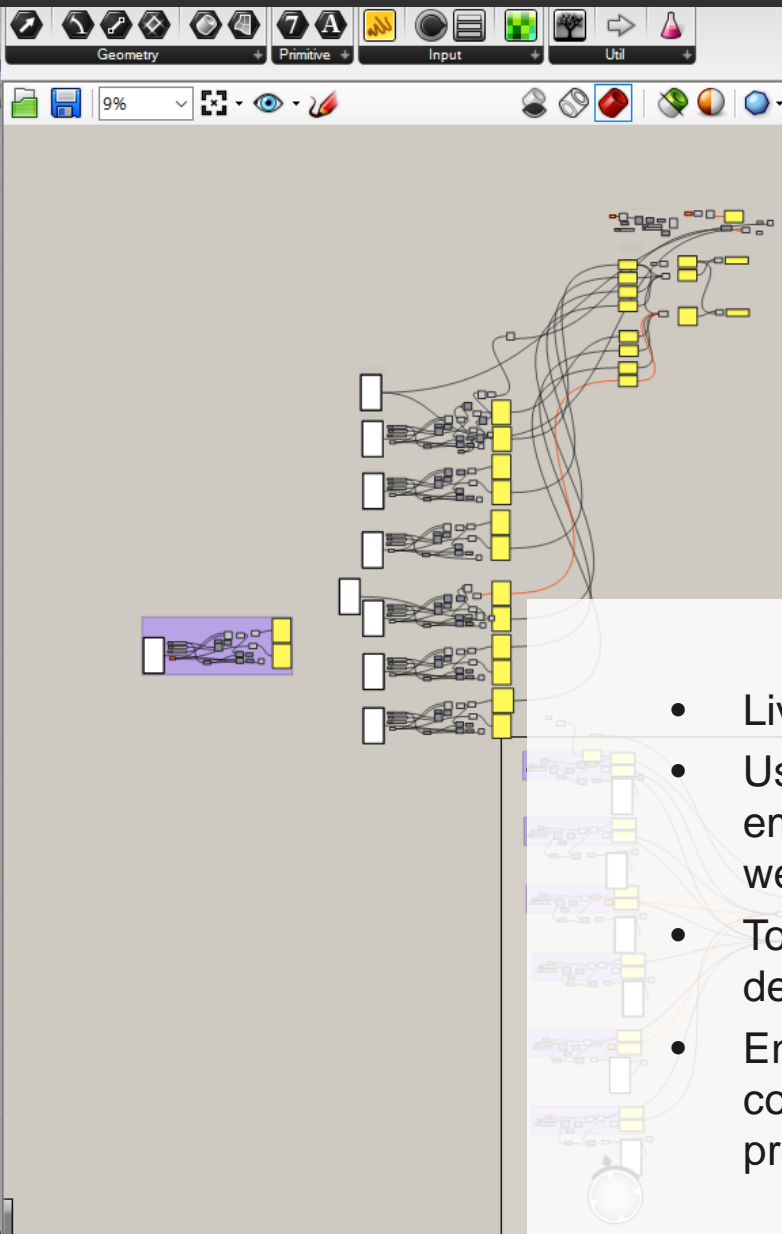
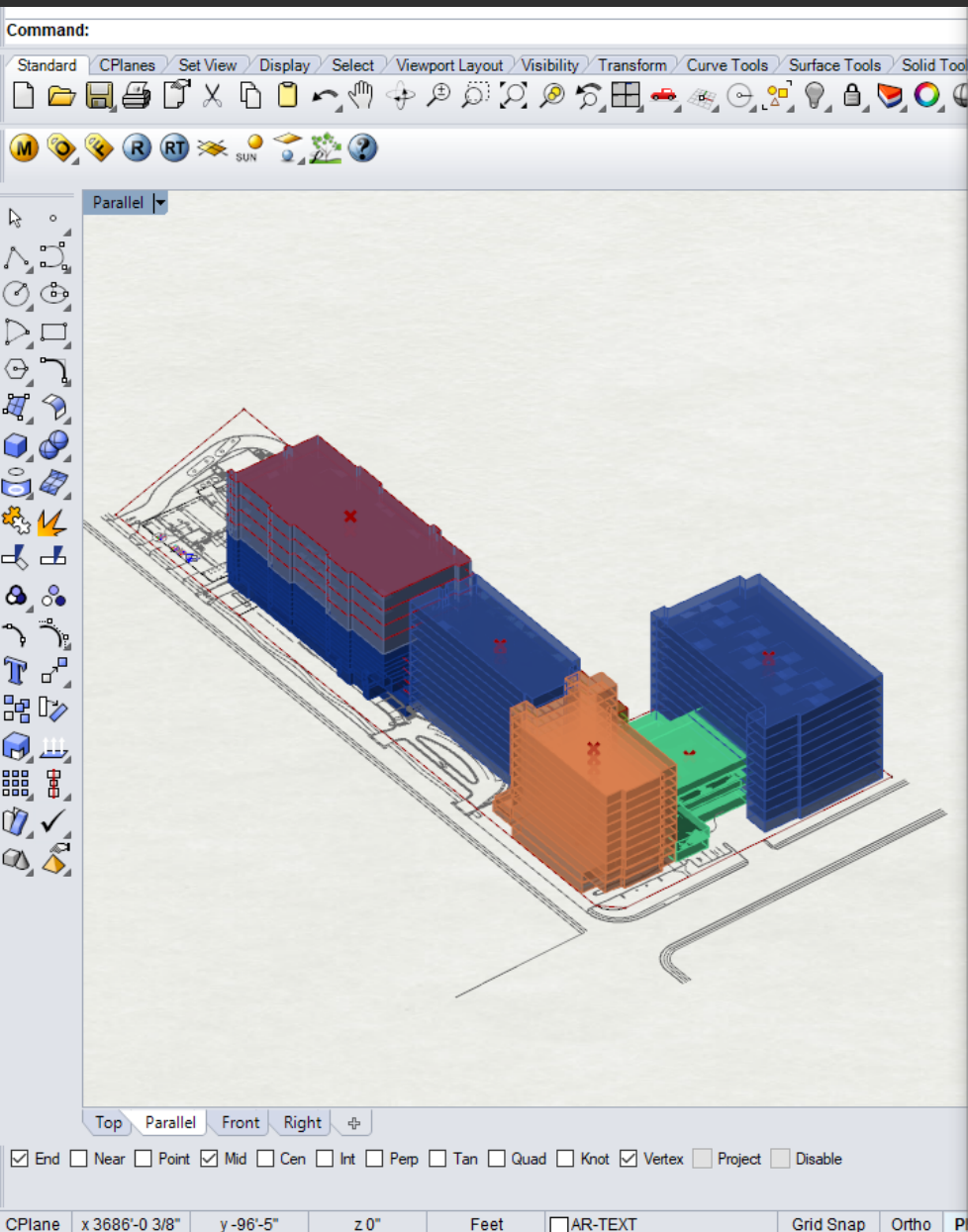


Stantec Buildings Applications



- Engagement
- Interaction
- Informed, guided decision making

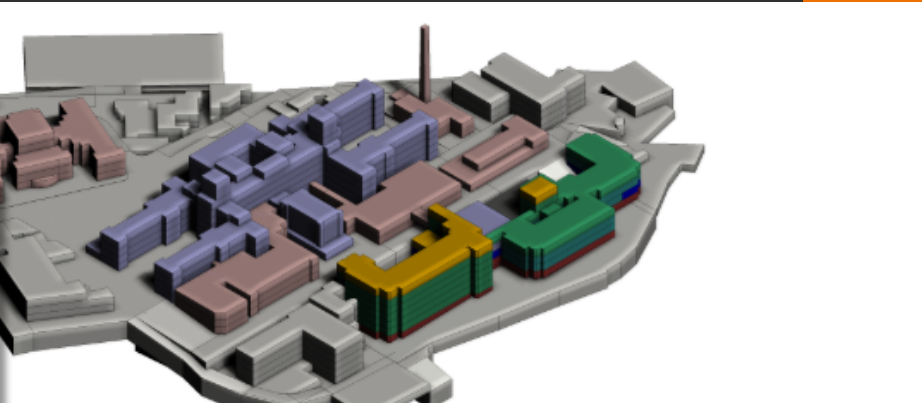
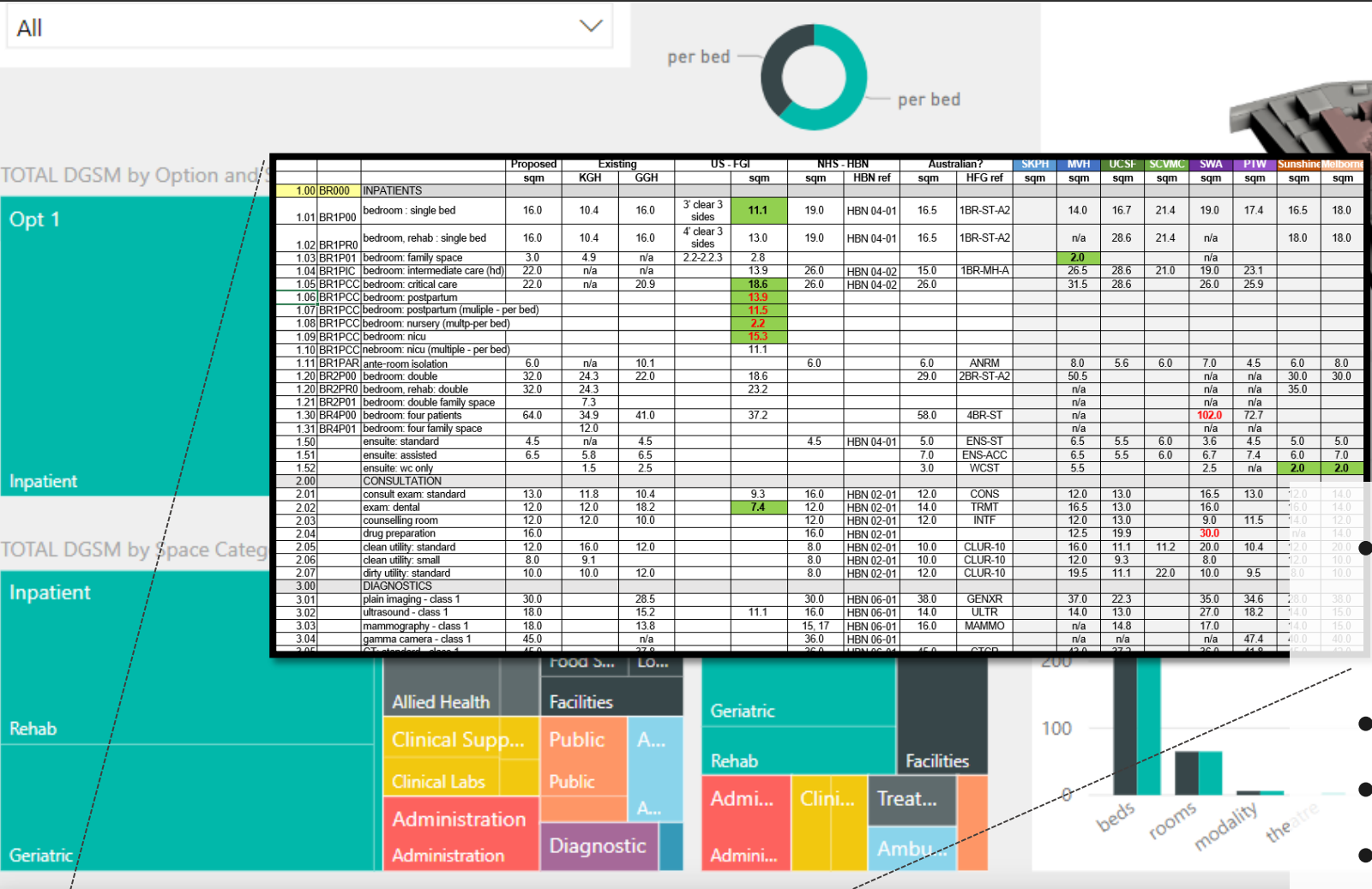
BI: Dynamic Client Facing Solutions



	A	B	C	D	E	F	G	H	I
1									
2									
3		Penches Tower	Levi South	Penches Garage	Building	Euse Tower	Tower		
4	EVE	PT	LB	PG	SB	ET	DH	BEDS	
5	11	LEASE							
6	10	LEASE							
7	9	LEASE							
8	8	LEASE							
9	7	LEASE							
10	6	LEASE							
11	5	LEASE							
12	4	Obstetric / Parturition	Obstetric / Parturition					PICU/Med-Surg	26
13	3	Obstetric / L&D	Obstetric / L&D					NICU	131
14	2	Peds Med-Surg	Peds Med-Surg					Obstetric / Radiology	26
15	1	Admin / Public	Admin					Emergency	60
16	0	Lab / Pharmacy / Recovery	Surgery					Mech / EVS	
17	all								
18									
19									
20									
21		Penches Tower	Levi South	Penches Garage	Building	Euse Tower	Tower		
22	LVL	PT	LB	PG	SB	ET	DH	BEDS	
23	11								
24	10								
25	9								
26	8								
27	7								
28	6								
29	5								
30	4								
31	3								
32	2								
33	1								
34	0	Lab							
35	all								
36									
37									
38									
39									
40									
41									
42									
43									
44									
45									
46									
47									
48									
49									
50									
51									
52									
53									
54									
55									
56									
57									
58									
59									
60									
61									
62									
63									
64									
65									
66									
67									
68									
69									
70									
71									
72									
73									
74									
75									
76									
77									
78									
79									
80									
81									
82									
83									
84									
85									
86									
87									
88									
89									
90									
91									
92									
93									
94									
95									
96									
97									
98									
99									
100									

- Live working sessions with Client
- Used parametric models to ensure empirical evidence and outcomes were present in conversation.
- Tool also enabled rapid scenario development and testing of options
- Enabled challenges to pre-conceived solution and follow-up project work to verify consult.

BI: Dynamic Client Facing Solutions



Option	Existing			Opt 1	
Space Category	TOTAL DGSM	TOTAL DRIVERS	AVG	TOTAL DGSM	TOTAL DRIVERS
Administration	1,595.57	275	5.80	2,310.00	
Ambulatory	725.90	20		1,162.52	
Diagnostic	1,139.78	6			
Education	231.00	275			
Non-Clinical Support	3,466.05	825	12.60	4,158.00	
Public	1,848.00	45		4,570.46	
Total	15,959.64	3646	25.30	40,796.66	

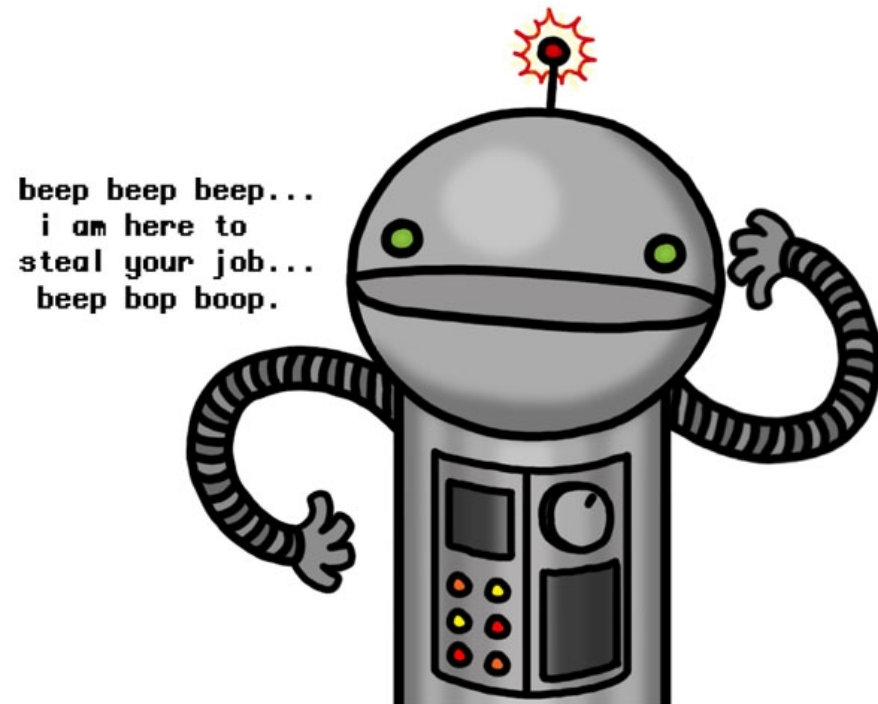
- Our ability to survive and thrive will rely on our ability to amass and leverage data
- Mine from multiple sources
- Organize information
- Identify trends
- Make accessible
- Make informed decisions

SELECT *
FROM Healthindustrystds;

FUTURE...??



Travel Agents Mortgage Brokers **Engineers**
BookKeepers Lawyers Broadcasters
Middle Managers **Casino Cashiers** IT Support Personnel
Financial Planners Floral Designers
Postal Workers **Photo Processors** Data Entry
Clerks Switchboard Operators Farmers and Ranchers
Architects Fast Food Cooks Newspaper Reporters
Jewelers **Textile Machine Workers** Furniture
Finishers **Door to Door Sales** Print Binding and
Finishing Workers **Detective** Primary Care Physicians



“*I am not a robot*”- Training the Machine

Majority Thought:

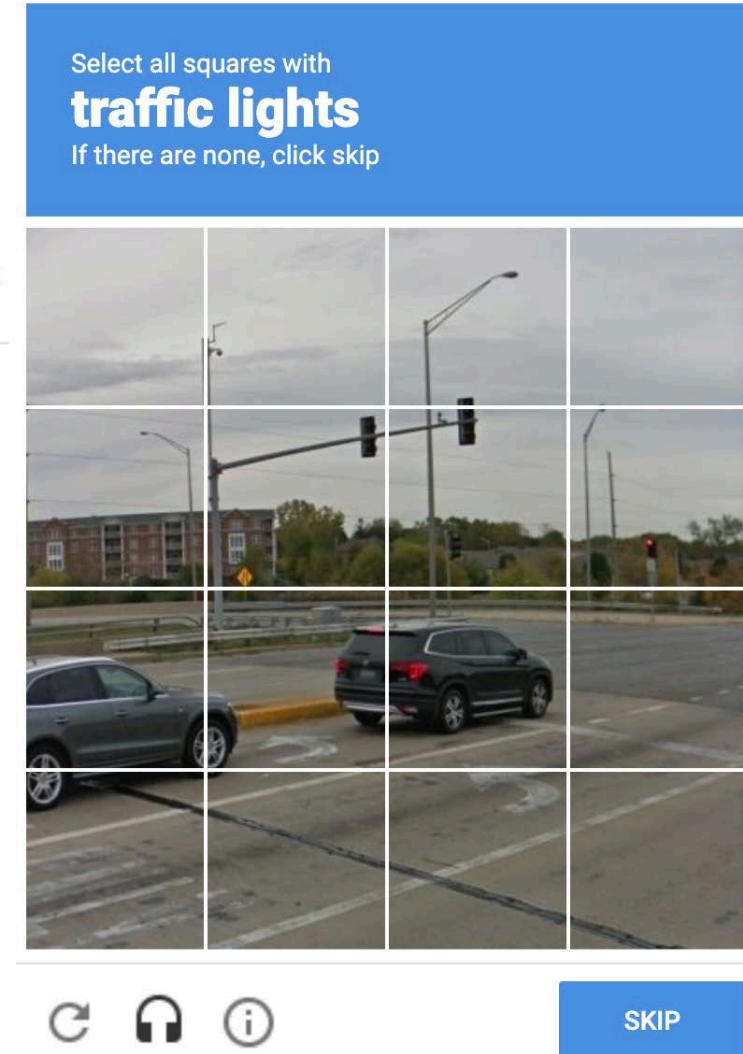
- Human vs. Bot
- Additional Security Measure
- A hassle

Reality:

- Crowd sourced proofing and editing of not only books but other periodicals as well
- Image recognition and identification training

Benefits:

- Better search results
- Informing new tech (driverless cars –autonomous vehicles)



Opportunity



The background of the slide is a dark gray with a complex, white line-art pattern resembling a circuit board or a network diagram. The pattern consists of numerous interconnected lines, circles, and rectangular shapes, some of which are highlighted in white against the dark background. The overall aesthetic is technical and modern.

Questions?

Sarah Dreger

Sarah.Dreger@Stantec.com