



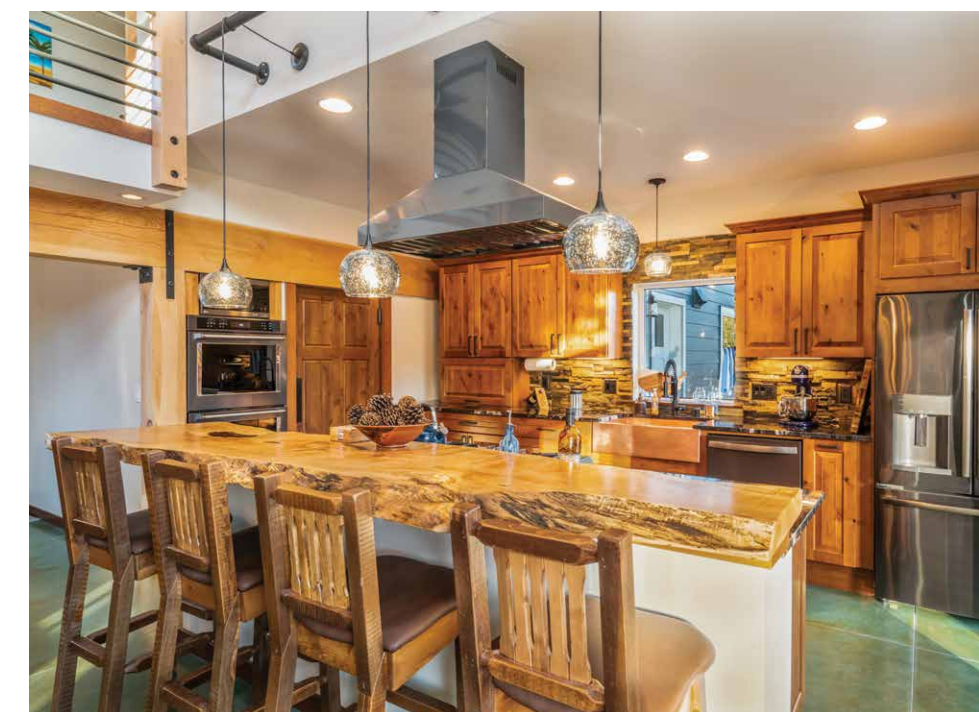
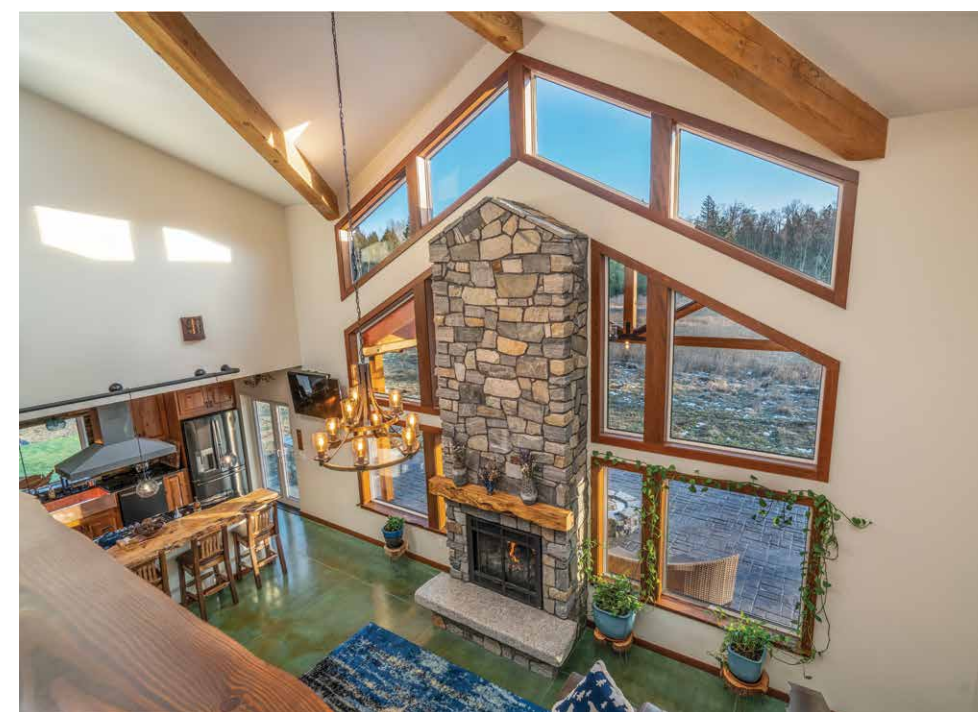
TC Legend Homes

Whatcom County Net Positive | Bellingham, WA | TCLegendHomes.com



Photos courtesy of TC Legend Homes

“That’s probably the best part – being comfortable at all times.” *Home owner*



PROJECT DATA

- **Layout:** 4 bdrm, 2.5 bath, 2 fls, 2,707 ft²
- **Climate:** IECC 4C, marine
- **Completed:** December 2018
- **Category:** custom for buyer

MODELED PERFORMANCE DATA

- **HERS Index:** without PV 34; with PV -11
- **Annual Energy Costs:** without PV \$950; with PV \$100
- **Annual Energy Cost Savings:** (vs typical new homes) without PV \$1,850; with PV \$2,750
- **Annual Energy Savings:** without PV 12,200 kWh, 59 gal. propane; with PV 22,300 kWh, 59 gal. propane
- **Savings in the First 30 Years:** \$116,600

CONTACT

Thad Johnson
213-419-8226
office@tclegendhomes.com

KEY FEATURES

- **Walls:** 6.5" R-29 graphite SIPs; R-30 spray foam at rim joists; fiber cement siding.
- **Roof:** 10.25" R-48 SIPs, tar paper, lifetime-warranty asphalt shingles.
- **Attic:** Vaulted ceiling.
- **Foundation:** Slab on grade, fiber mesh-reinforced 4" concrete, 4" R-20 EPS foam under-slab, R-23 ICF stem walls, slab is finished floor.
- **Windows:** Triple-pane, argon-filled, low-e3, vinyl casement frames, U=0.14, SHGC=0.33.
- **Air Sealing:** 0.44 ACH 50.
- **Ventilation:** HRV, continuous ventilation, with boost timers; MERV 13 filters.
- **HVAC:** Combined heat and hot water, air-to-water heat pump, 3.92 COP, radiant floor heating; 23 SEER AC; propane fireplace backup; passive solar design.
- **Hot Water:** Heat pump water heater, 3.92 COP, 50-gal.; electric tankless backup; PEX pipes.
- **Lighting:** 100% LED, motion sensors, daylighting.
- **Appliances:** ENERGY STAR clothes washer, dryer, dishwasher, and refrigerator.
- **Solar:** 10.07-kW PV system.
- **Water Conservation:** Low-flow fixtures, drought-resistant landscaping.
- **Energy Management System:** Thermal mass for even temps.
- **Other:** Electric vehicle charging station, stepless entry, curbless shower, wider doors, HBCD-free SIPs, low-to-no-VOC products, formaldehyde-free cabinets.

