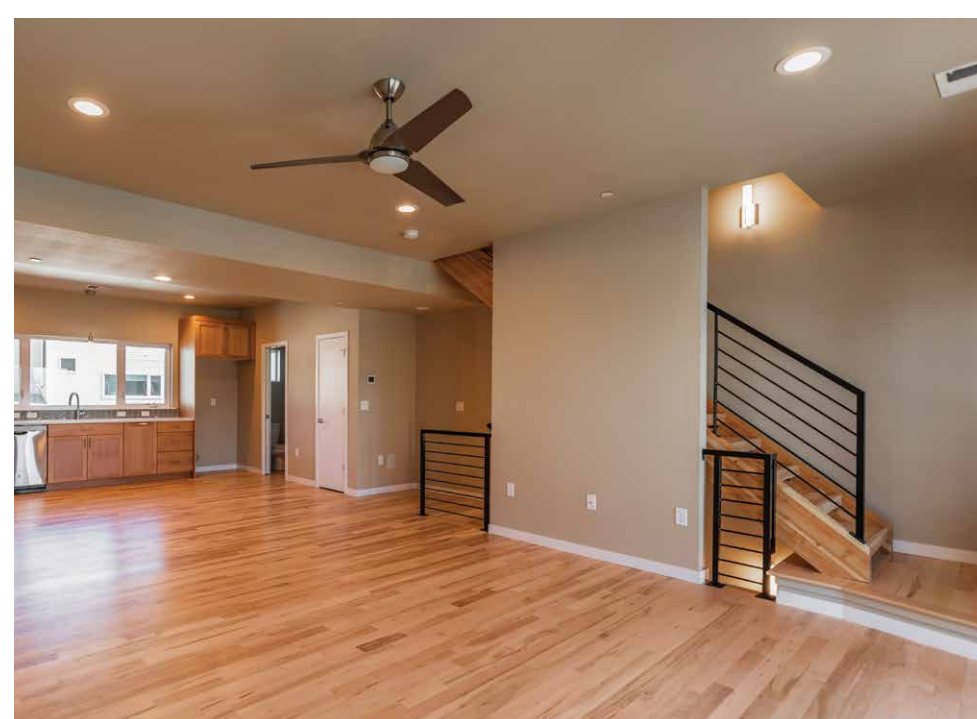
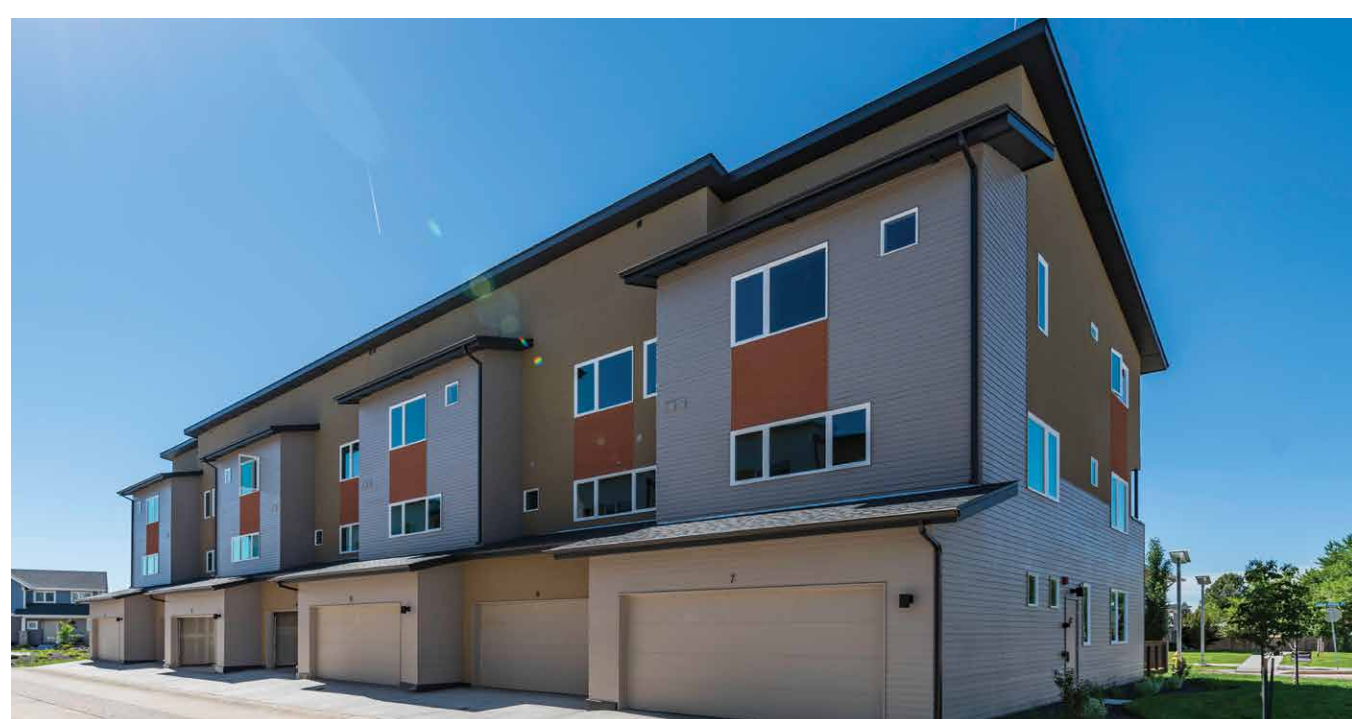




Photos courtesy of Philgreen Construction

"We enjoy every minute of living in this house." *Revive home owner*



## PROJECT DATA

- **Layout:** 2 bdrm, 2.5 bath, 3 fls, 1,576 ft<sup>2</sup>
- **Climate:** IECC 5B, cold
- **Completed:** February 2019
- **Category:** multifamily

### MODELED PERFORMANCE DATA

- **HERS Index:** without PV 49; with PV -1
- **Annual Energy Costs:** without PV \$1,050; with PV \$50
- **Annual Energy Cost Savings:** (vs typical new homes) without PV \$1,500; with PV \$2,550
- **Annual Energy Savings:** without PV 9,200 kWh; with PV 19,500 kWh
- **Savings in the First 30 Years:** \$107,600

## KEY FEATURES

- **Walls:** 2x4 staggered studs on 2x6 plate, advanced framing; R-23 total: ½" drywall, R-23 blown fiberglass, 7/16" coated OSB sheathing, cement board siding.
- **Roof:** Shed roof, ½" drywall, 14" I-joist, 15/32" OSB, ice-and-water guard, asphalt shingles.
- **Attic:** Unvented vaulted ceilings, 14" R-50 open-cell spray foam in I-joist cavity.
- **Foundation:** Slab on grade with frost wall and footing, R-10 insulation under slab.
- **Windows:** Double-pane, argon-filled, low-e, vinyl casement frames, U=0.28, SHGC=0.18.
- **Air Sealing:** 1.66 ACH 50.
- **Ventilation:** ERV with programmed timer, 85 cfm continuous ventilation, MERV 10 filter on HVAC.
- **HVAC:** Combined heat and hot water; ground-source heat pump, 4.18 COP; rigid metal ducts in conditioned space.
- **Hot Water:** Ground-source heat pump with desuperheater, 2.16 COP, 40-gal.; electric tank backup; hydronic gravity loop distribution.
- **Lighting:** 100% LED, daylighting.
- **Appliances:** ENERGY STAR dishwasher.
- **Solar:** 7.04-kW PV system.
- **Water Conservation:** EPA WaterSense fixtures and toilets, porous pavers, bioretention pond for water runoff.
- **Energy Management System:** Smart thermostat.
- **Other:** Low-to-no-VOC products, passive radon system, ready for electric car charging station.

## CONTACT

Dave Phillips  
970-222-8989  
Dave@Philgreenco.com

