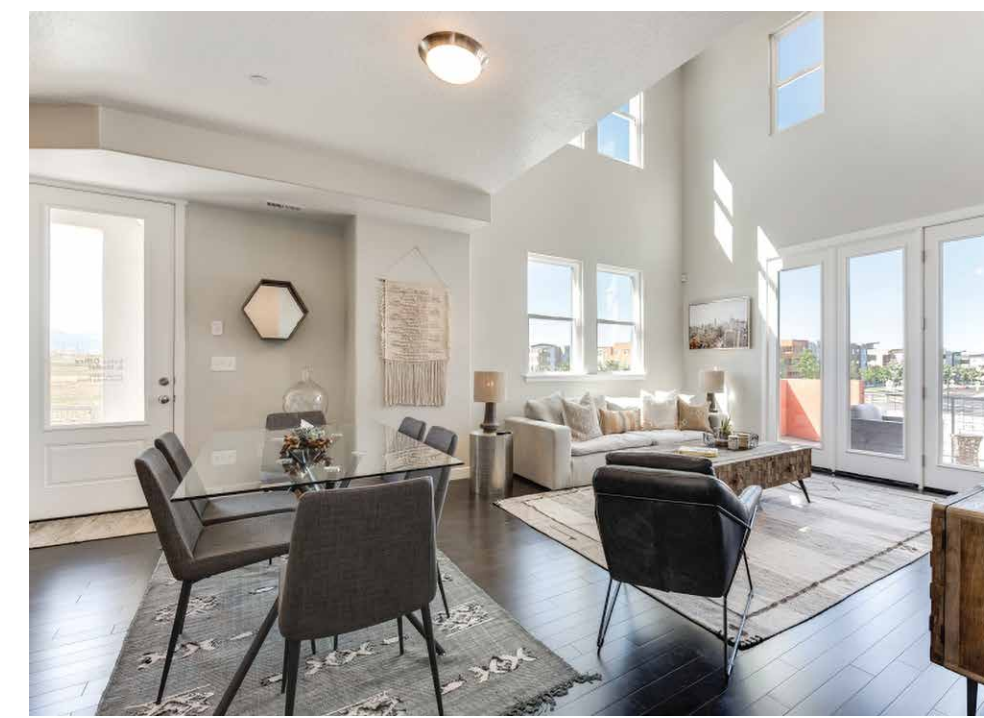
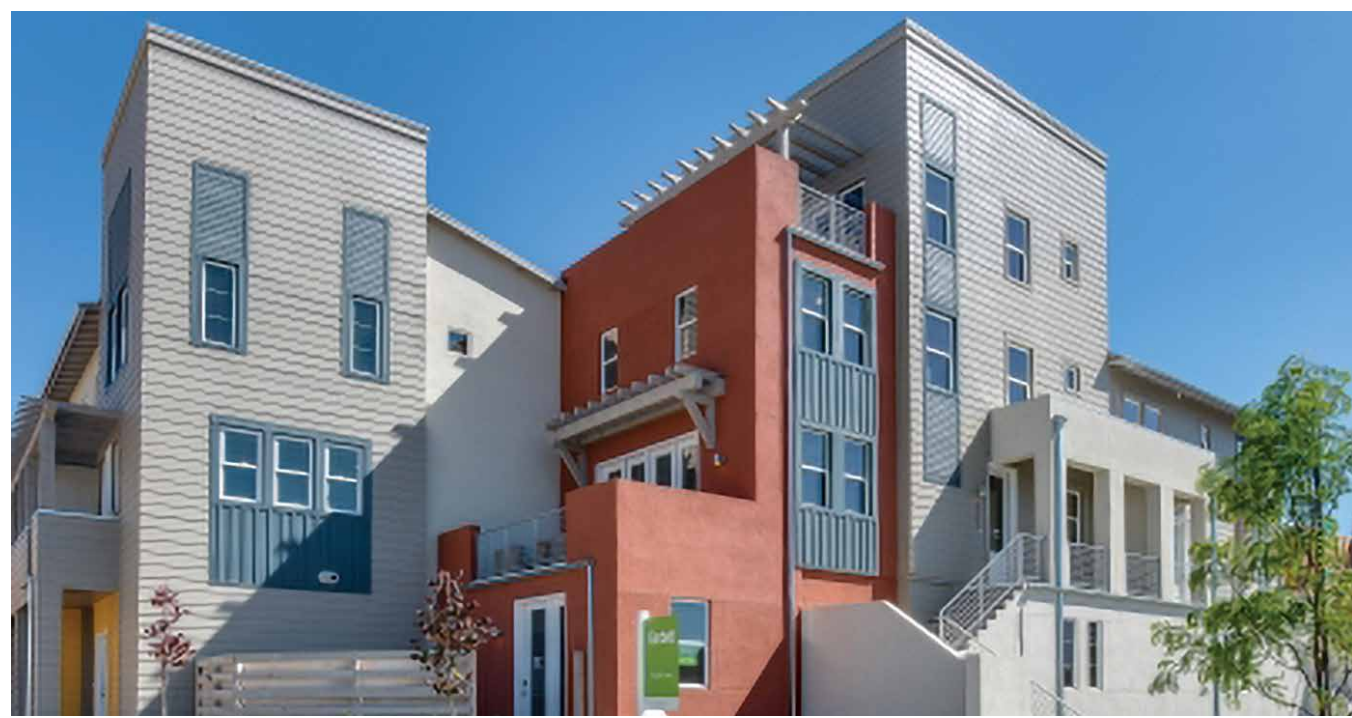




“Low bills, indoor air quality, comfort, finishes, building process, decreased noise infiltration and so much more.” *Garbett Homes*



## PROJECT DATA

- **Layout:** 2 bdrm, 2 bath, 3 fls, 1,974 ft<sup>2</sup>
- **Climate:** IECC 5B, cold
- **Completed:** April 2019
- **Category:** multifamily

### MODELED PERFORMANCE DATA

- **HERS Index:** without PV 47
- **Annual Energy Costs:** without PV \$750
- **Annual Energy Cost Savings:** (vs typical new homes) without PV \$700
- **Annual Energy Savings:** without PV 3,700 kWh, 500 Therms
- **Savings in the First 30 Years:** \$33,600

## CONTACT

Damian Mora  
801-455-7834  
damian@garbetthomes.com

## KEY FEATURES

- **Walls:** 2x6 24" o.c. advanced framing, R-23 total: ½" drywall; 5.5" of blown fiberglass, 7/16" OSB sheathing, house wrap, two-ply 60-minute vapor barrier, 3/8" cement base coat.
- **Roof:** 7/16" OSB sheathing, underlayment, #15 roof felt (2 layers on low slope), asphalt shingles.
- **Attic:** Vented attic; closed-cell spray foam over all top plates and light fixtures, 14" R-60 blown fiberglass on attic floor; 12" raised heel trusses.
- **Foundation:** Slab on grade, poured concrete, R-10 under slab.
- **Windows:** Double-pane, low-e, vinyl, sliding, single-hung, and fixed frames, U=0.30, SHGC=0.30 (varies).
- **Air Sealing:** 2.6 ACH 50.
- **Ventilation:** ERV, MERV 8 filter.
- **HVAC:** 96.5% AFUE gas furnace with ECM motor; 15 SEER AC; rigid metal ducts in conditioned space.
- **Hot Water:** Gas condensing tankless water heater, .93 EF; push button recirculation pump.
- **Lighting:** 95% LED, 5% CFL.
- **Appliances:** ENERGY STAR refrigerator, dishwasher, and clothes washer.
- **Solar:** Solar ready.
- **Water Conservation:** EPA WaterSense fixtures, drought-resistant landscaping.
- **Energy Management System:** Programmable thermostat.
- **Other:** Low-to-no emission wood products, interior paints, finishes, carpets, adhesives, and carpet padding.

