



U.S. DEPARTMENT OF
ENERGY

Legacy
Management

August 20–23, 2018
Grand Junction, Colorado

2018 Long-Term Stewardship Conference

Weldon Spring Site Interpretive Center Progression Over the Years

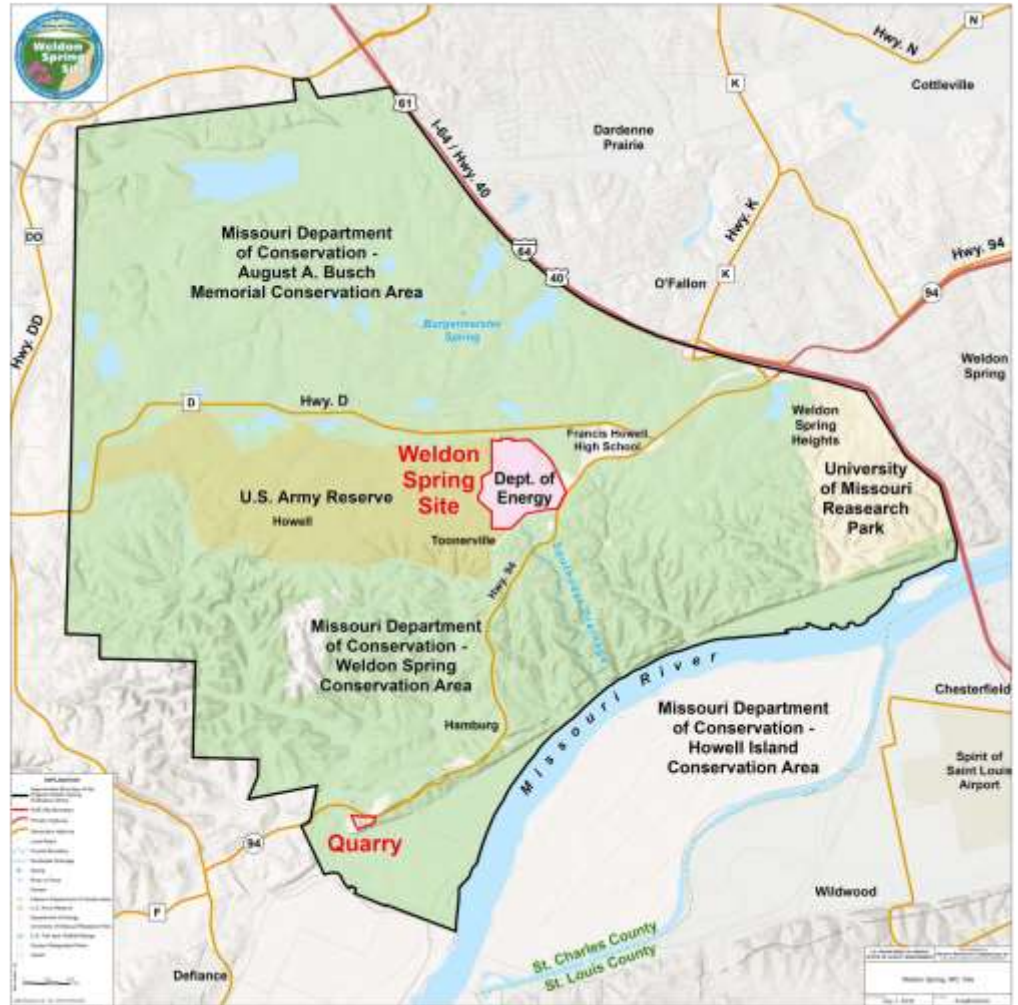
Ken Starr, Weldon Spring Site Manager

U.S. Department of Energy (DOE)

Office of Legacy Management (LM)

Weldon Spring Site - A Legacy of Service

- Located in St. Charles County, Missouri.
Approx. 30 miles west of St. Louis.
- 17,232 acres originally acquired by U.S. Army in 1940
- 1941-1945: TNT/DNT Processing
- 1957-1966: Uranium Production
- ~ 1986-2001:
- Remedial Actions
- 2002: Interpretive Center Opening



Production History

Weldon Spring Ordnance Works
US Army, 1941 – 1945



Weldon Spring Uranium Feed
Materials Plant
AEC, 1957-1966



Weldon Spring Remedial Action Project: ~ 1986 - 2001



Weldon Spring Site Interpretive Center August 2002

- The Weldon Spring Site Interpretive Center is DOE's first interpretive/educational facilities following remedial actions and is one of the site's CERCLA requirements.
- Opened to the public August, 2002
- Originally Limited hours & staffing
- One meeting room and exhibit hall.



The Weldon Spring Site Interpretive Center

Early Lessons Learned, 2002 - 2007

- Original, unstaffed facility:
 - security concerns
 - limited public information
- Personnel were assigned 2003
- Hours expanded to seven days/week.
- Interpretive programs begin.
- Second classroom added, 2007



The Weldon Spring Site Interpretive Center Display Updates - 2010

30% Design



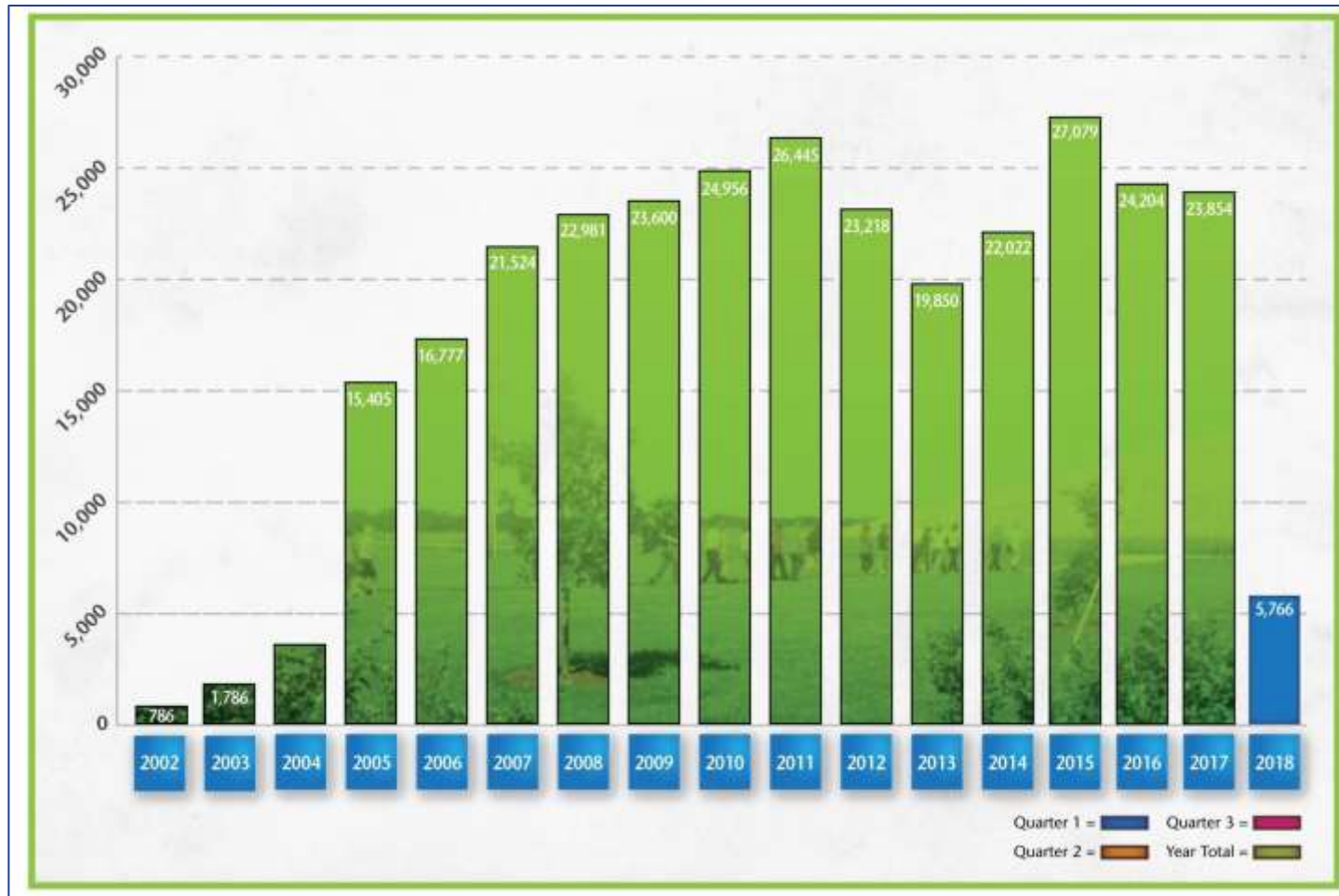
Installation



The Weldon Spring Site Interpretive Center Current Exhibits - 2010 through Today



The Weldon Spring Site Interpretive Center



The Weldon Spring Site - School Programming

- k-12 and college attendance
- Meets Missouri educational curriculum standards
- New for 2018 – Next Generation Science Standards



Weldon Spring Site

NEW!
Next Generation
Science Standards
Field Trips

Interpretive Center
FIELD TRIPS and
OUTREACH PROGRAMS
School Year 2018-2019
and Summer 2019

U.S. DEPARTMENT OF ENERGY | Legacy Management

U.S. Department of Energy
Eckling Park Center
Weldon Spring Site
Environmental Center • Learning Trail • Interpretive Center & Store

The Weldon Spring Site Interpretive Center Other Improvements



Trail Counters:

(June 2015 to May 2017)

- **Vehicles:**

90,835

- **Disposal Cell:**

37,773

- **Hamburg**

Trail:

39,591

Storm Shelters – Tornado 2013

- Installations 2014 and 2015
- Approx. 230 total occupancy



Meeting Room Users

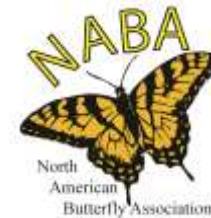
- Missouri Master Naturalists
- Astronomical Society of Eastern Missouri
- Lewis and Clark Garden Club
- Boone Country Garden Club
- Oath Keepers
- MO DIRT
- Coro Fellows Program
- St. Louis Sci-Fi and Fantasy Club
- Missouri Department of Conservation
- Boone Trails Boy Scouts
- O'Fallon Garden Club
- Mountain Bike Races
- Running Events



Outreach Public Events



Monarch Madness - Annual Partner Public Event



September 15, 2018



New Weldon Spring Site Interpretive Center

Anticipated opening in 2020

- New exhibits
- 4 classrooms
- Auditorium
- Combined staff offices

