



# Energy Keepers, Inc.



# Vision and Goals Achieved



- 9/5/2015 - EKI/CSKT acquired Kerr Dam and renamed it - Selish Ksanka Q'lispe Hydro Electric Project
- 1<sup>st</sup> time in 80 years we have control of one of our major resources, Flathead Lake and the Lower Flathead River
- We have create 27 well paid jobs
- Most of those jobs are filled with skilled and trained Tribal Members
- Through EKI as a Section 17 Corp. CSKT will realize all of the economic benefit of the facility.

3/7/2018

# Selish Ksanka Ql'ispe Dam

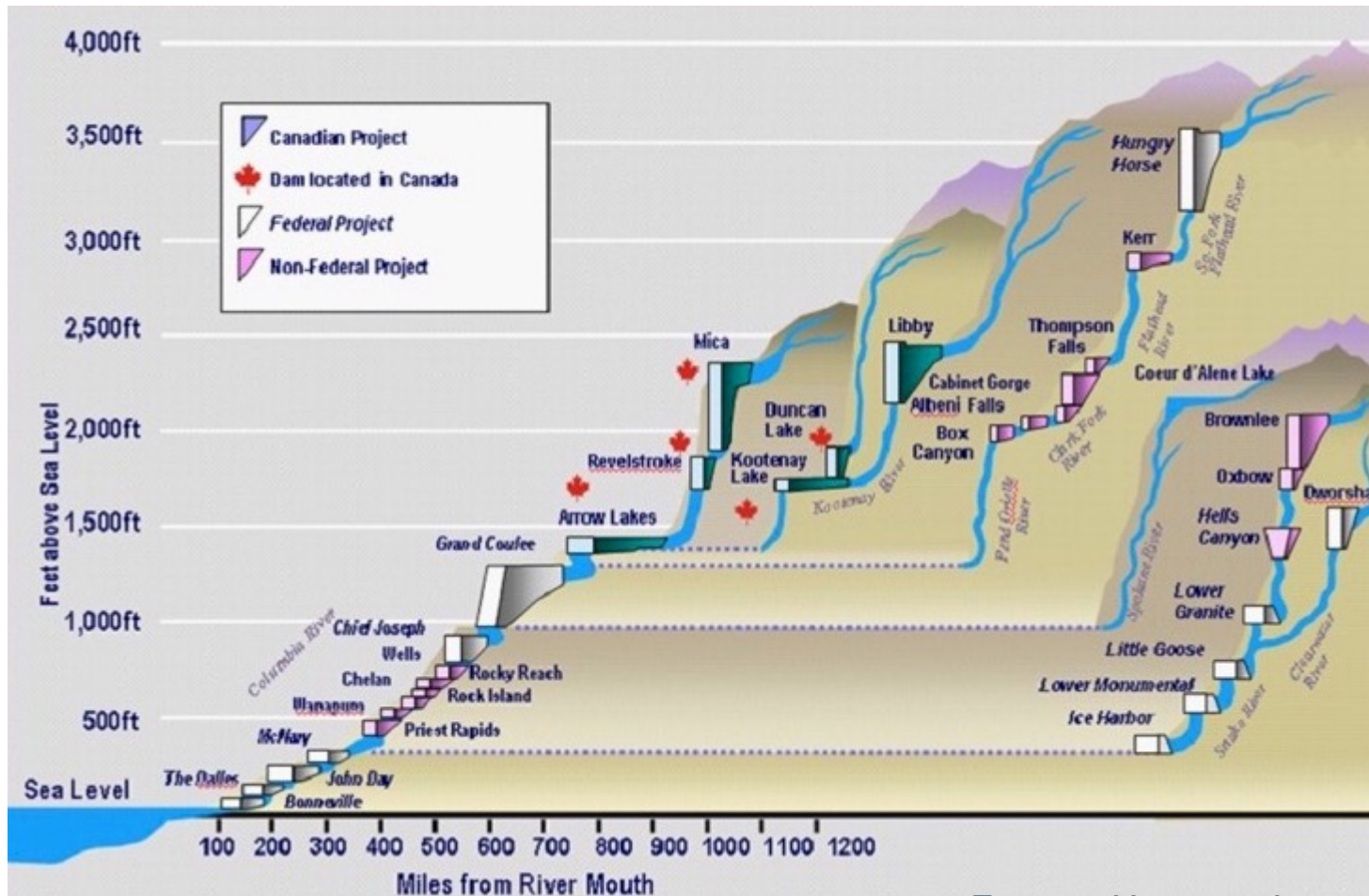


- A 200 foot high, 381 foot long concrete arch dam
- 208 MW facility producing 1.1M mwh/yr



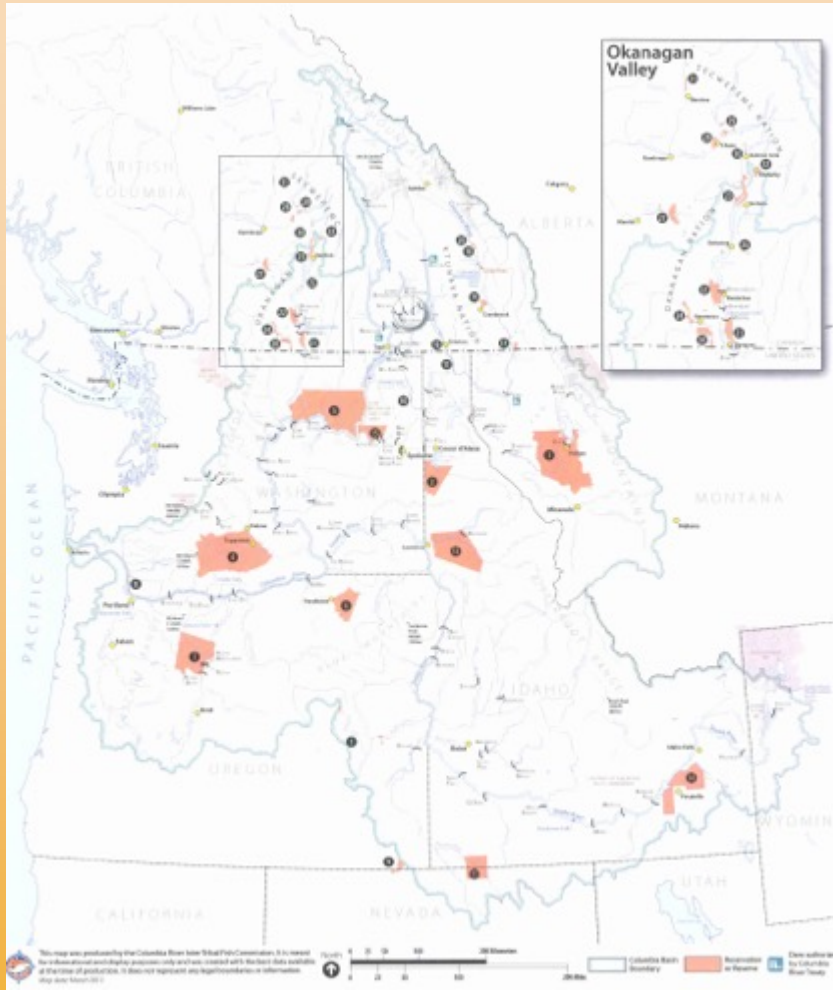
- Located on Tribal land in the middle of CSKT's Flathead Indian Reservation
- SKQ's reservoir is the top ten feet of Flathead Lake with 1.2 MAF of storage

# Critical Infrastructure



# Columbia River Basin





Sel'ish Ksanka Ql'ispe'  
Project is located on a  
significant sight from  
cultural, religious, and  
resource perspectives



Lower Flathead  
River Before SKQ  
Dam

# Planning Acquisition for 30 Years

## *Kerr History*



- **The Kerr Project was developed as result federal assimilation polices implemented on the Flathead Indian Reservation from 1908-1934**
  - Allotting of the land
  - Creation of the Flathead Indian Irrigation Project (irrigation and power)
  - Development of power sites by non-Indian business entities

- **1921** Applications are filed for licenses to develop five power sites on the Flathead River within the Flathead Reservation.
- **1930** The Federal Power Commission issued the first 50-year license to the Rocky Mountain Power Company for the Kerr Dam site.
- **1939** Rocky Mountain Power Company transferred its interest in the License to the Montana Power Company ("MPC"). Kerr Dam began producing power.
- **1976** CSKT filed a competing application with the Federal Energy Regulatory Commission ("FERC") for relicensure of Kerr .
- **1980** The first license expired and FERC issued a series of one-year licenses to MPC.
- **1985** the Tribes successfully negotiate co-licensee status with the MPC and the option to acquire Kerr as the sole owner in 2015. New License issued to MPC and CSKT for a 50-year term through 2035.
- **1999** PPL Montana (PPLM") acquires Kerr from MPC and FERC transfers MPC's License interest to PPLM.
- **2015** CSKT exercised its exclusive and unilateral right to acquire Kerr through Energy Keepers Inc.



# CSKT's Strategic Planning Process

Phase I  
Policies

Phase V  
Estimated Conveyance Price

Phase II  
Opportunities, Limits, Priorities

Phase III  
Capacity and Relationships

Phase IV  
Business Organization

Phase VI  
EKI Startup

Conveyance Price Set

Planning Initiated

DOE Launched

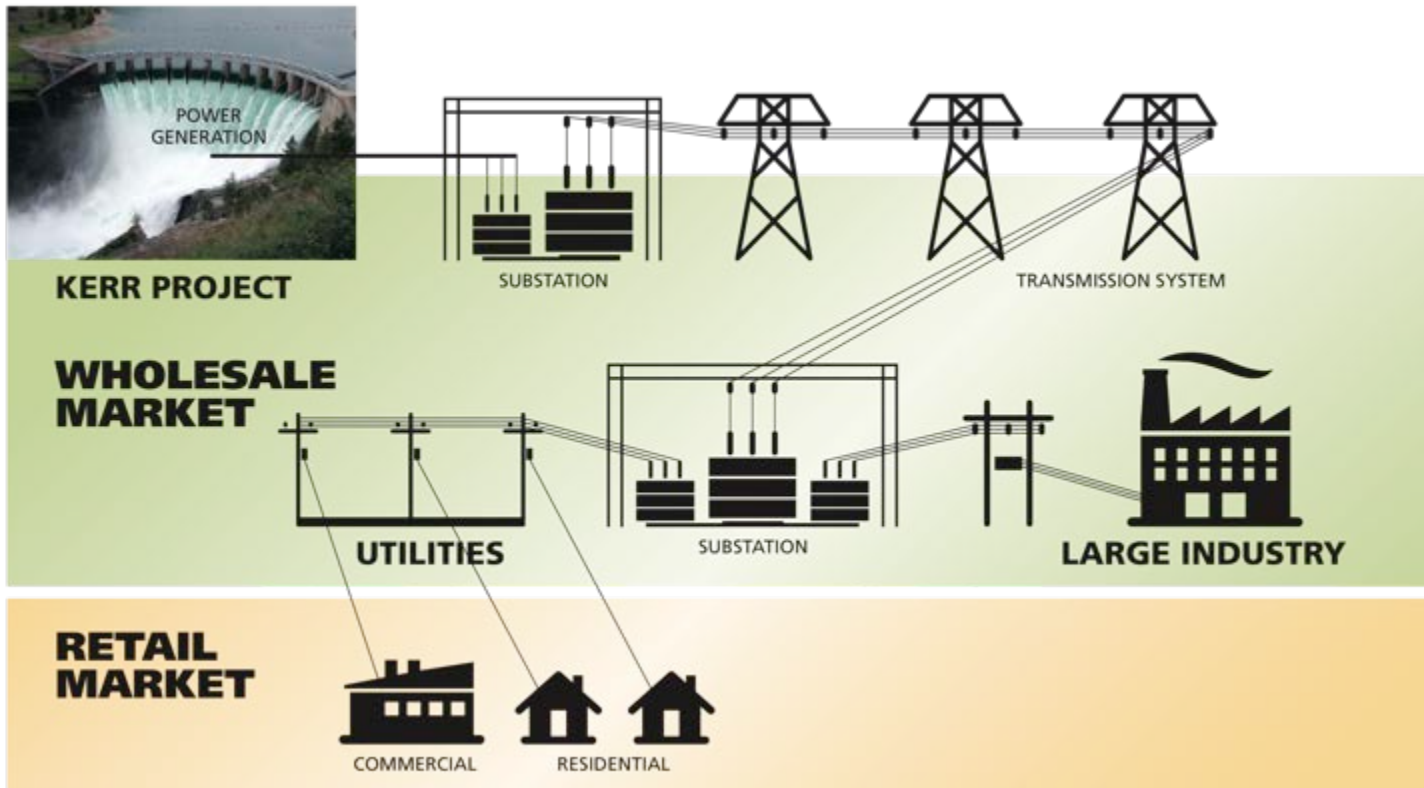
EKI Launch

Project Acquired

2005 | 2006 | 2007 | 2008 | 2009 | 2010 | 2011 | 2012 | 2013 | 2014 | 2015 | 2016



# EKI's Business Model - *Independent Power Producer*



# How Have We Done



- Successfully managed the largest natural freshwater lake west of the Mississippi as an integral part of the Columbia Basin Hydro system
- Performed over \$8 MM of deferred maintenance on the facility
- Captured most of the Montana industrial load.





# Where Are We Headed

- Intend to have the facility completely rehabbed in the next decade
- Expand our business and provide energy management services across other markets



# Questions?