

LANL Capabilities Applicable to the Advanced Development and Optimization of Biofuels

Advanced Development and Optimization Workshop

12th December 2017



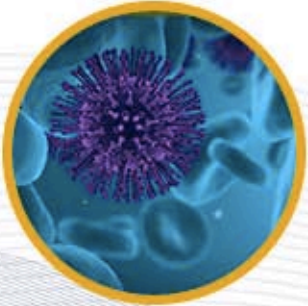
Andrew Sutton
adsutton@lanl.gov



Operated by Los Alamos National Security, LLC for the U.S. Department of Energy's NNSA

Advanced Sensing Capability

Biological Applications



Chemical



Explosives Detection



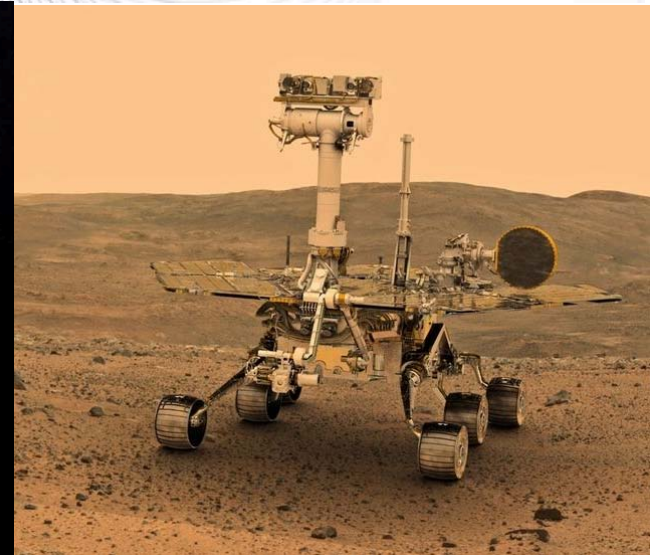
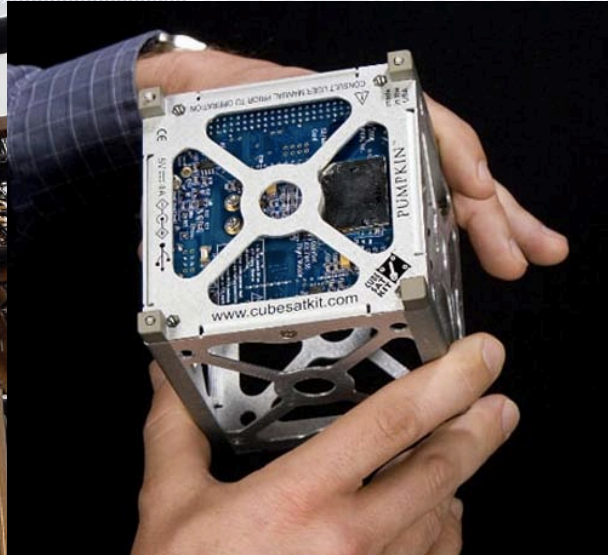
Radiological/Nuclear



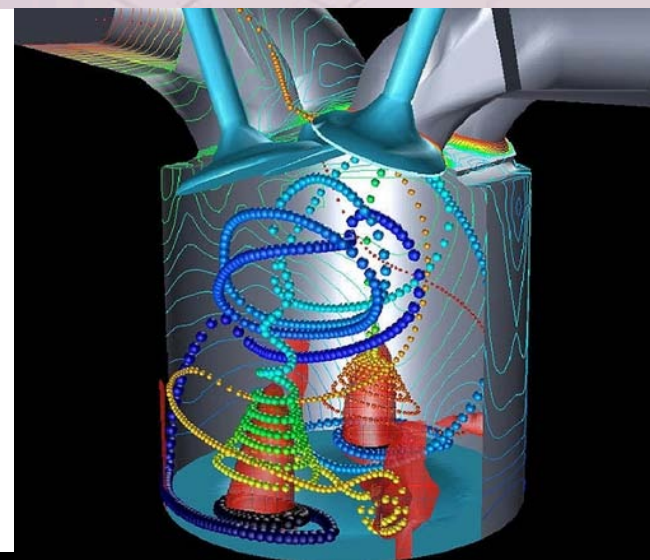
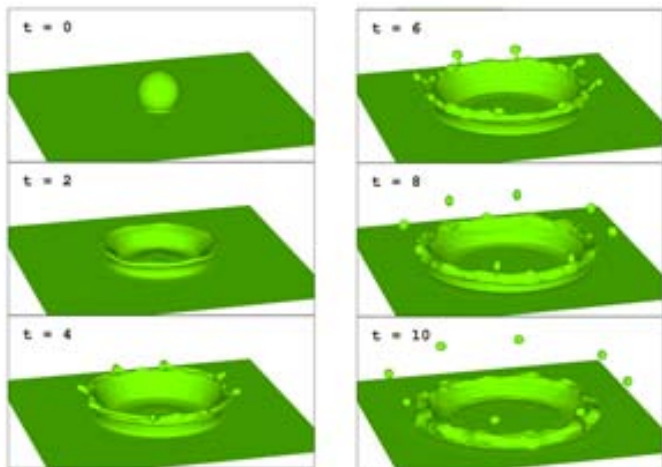
Special Applications



Aerospace, Climate, Energy, Space



High Performance Computing



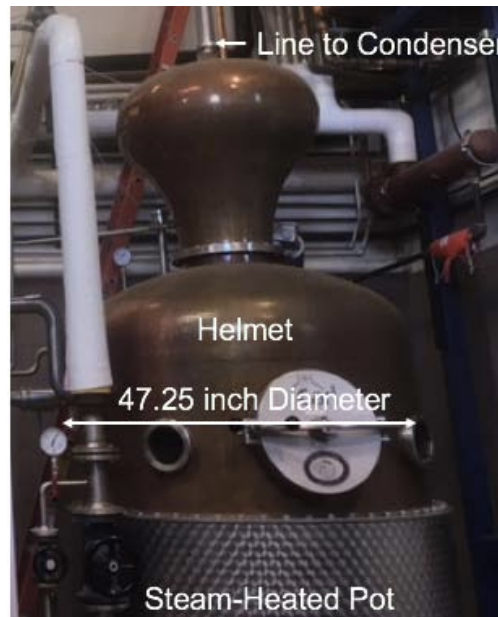
Applied Engineering

- **Santa Fe Spirits**

- Artisan distillery that produces whiskey and other fine spirits sold in eight states and three countries

- **The Problem**

- The chilled water system that supplies the condenser on their still is under sized due to altitude



Capability Summary

- Demonstrated ability to solve industry problems
 - Over 20 years P&G CRADA
 - Long running Chevron CRADA
 - Cooperative projects with local small businesses
- Specifics Capabilities:
 - Batch reaction optimizations
 - Continuous flow reactor engineering
 - Engineering solutions
 - High performance computing
 - Remote sensing in extreme environments
 - Spectroscopy in extreme environments
 - Computational fluid dynamics
- Biomass expertise in algal biofuels, catalysis, engineering
 - Participant in CoOptima, FCIC, ChemCatBio
- Large scale engineering and manufacturing expertise
- 145 R&D 100 awards