

El Paso Electric

Renewables Development

Business Energy Summit
November 29, 2017



El Paso Electric

Service Territory

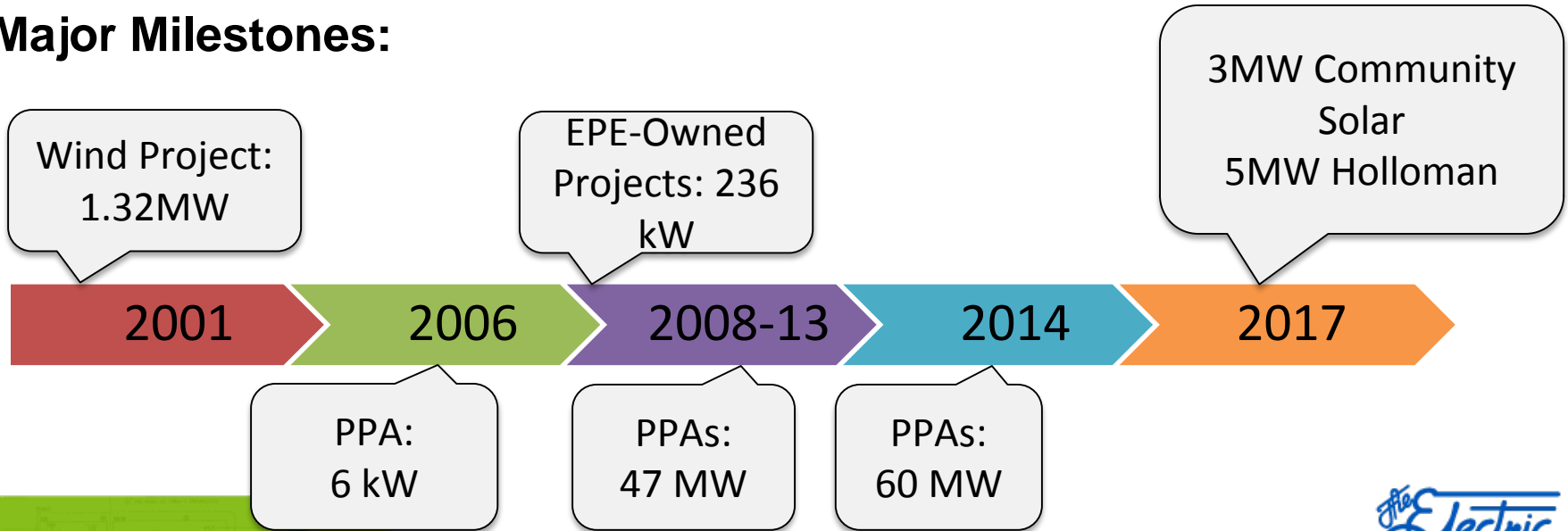
- Approximately 411,000 retail customers
- Service territory larger than the state of New Jersey
- Clean dependable generating capability 2,080 MW:
 - 30% nuclear
 - 70% natural gas
- EE owns 1,834 miles of transmission lines
- Interconnected with WECC, not ERCOT, and Mexico
- Texas jurisdiction represents ~ 80% of non-fuel base revenues



Renewable Energy Projects

EPE is committed to supporting the development of renewable energy projects.

Major Milestones:



EPE's PPA Renewable Facilities-107 MW



Las Cruces Centennial



Chaparral



SWEC



Roadrunner



Hatch



PSEG(Newman)

Macho Springs



EPE's PPA Renewable Facilities

Southwest Environmental Center:

- **Project:** Solar PV
- **Location:** Las Cruces, NM
- **Technology:** PV Panels
- **COD:** 2006
- **Capacity:** 6 kW
- **Rooftop**
- **Owner:** SWEC
- **PPA term:** 20-yr



EPE's PPA Renewable Facilities

Hatch:

- **Project:** Solar PV
- **Location:** Hatch, NM
- **Technology:** Sunpower Monocrystalline, Dual Axis Tracking
- **COD:** July 2011
- **Capacity:** 5 MW
- **Acreage:** 39
- **Owner:** NextEra Energy
- **PPA term:** 25-yr



EPE's PPA Renewable Facilities

Roadrunner:

- **Project:** Solar PV
- **Location:** Santa Teresa, NM
- **Technology:** Thin Film modules, Single Axis Tracking
- **COD:** August 2011
- **Capacity:** 20 MW
- **Acreage:** 210
- **Owner:** NRG Energy
- **PPA term:** 20-yr



EPE's PPA Renewable Facilities

Las Cruces Centennial:

- **Project:** Solar PV
- **Location:** Las Cruces, NM
- **Technology:** Polycrystalline modules, Azimuth Tracking
- **COD:** May 2012
- **Capacity:** 12 MW
- **Acreage:** 140
- **Owner:** SunEdison
- **PPA term:** 25-yr



EPE's PPA Renewable Facilities

El Chaparral:

- **Project:** Solar PV
- **Location:** Chaparral, NM
- **Technology:** Polycrystalline modules, Azimuth Tracking
- **COD:** June 2012
- **Capacity:** 10 MW
- **Acreage:** 140
- **Owner:** SunEdison
- **PPA term:** 25-yr



EPE's PPA Renewable Facilities

Macho Springs:

- **Project:** Solar PV
- **Location:** Deming, NM
- **Technology:** Thin-Film modules, ground-mounted single axis tracking
- **COD:** May 2014
- **Capacity:** 50 MW
- **Acreage:** 411
- **Owner:** Southern and Turner
- **PPA term:** 20-yr



EPE's PPA Renewable Facilities

PSEG El Paso Energy Center:

- **Project:** Solar PV
- **Location:** Northeast El Paso, TX
- **Technology:** Polycrystalline modules, single axis tracking
- **COD:** December 2014
- **Capacity:** 10 MW
- **Acreage:** 100
- **Owner:** PSEG
- **PPA term:** 30-yr



EPE-Owned Renewable Facilities-236 kW



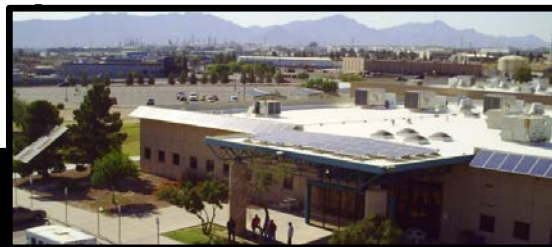
Rio Grande and
Newman Carports



Wrangler



Stanton Tower



El Paso Community
College



Van Horn

EPE-Owned Renewable Facilities

Newman and Rio Grande Power Plants:

- **Project:** Solar PV
- **Technology:** Fixed-tilt, mono-crystalline modules
- **COD:** December 2009
- **Capacity:** 128 kW (64 kW each)
- **Carport**
- **Owner:** El Paso Electric



EPE-Owned Renewable Facilities

Stanton:

- **Project:** Solar PV
- **Technology:** Fixed tilt, monocrystalline modules
- **COD:** January 2012
- **Capacity:** 31 kW
- **Rooftop**
- **Owner:** El Paso Electric



EPE-Owned Renewable Facilities

El Paso Community College:

- **Project:** Solar PV
- **Technology:** Fixed tilt, polycrystalline modules
- **COD:** January 2012
- **Capacity:** 14 kW
- **Rooftop**
- **Owner:** El Paso Electric



EPE-Owned Renewable Facilities

Wrangler Substation:

- **Project:** Solar CPV
- **Technology:** Concentrated Photovoltaic (CPV) dual axis tracking
- **COD:** October 2011
- **Capacity:** 48 kW
- **Acreage:** 0.75
- **Owner:** El Paso Electric



EPE-Owned Renewable Facilities

Van Horn:

- **Project:** Solar PV
- **Technology:** Fixed tilt, polycrystalline modules
- **COD:** August 2013
- **Capacity:** 15 kW
- **Carport**
- **Owner:** El Paso Electric



Texas Community Solar Site



Texas Community Solar Project

- 3 MW PV System that is owned, operated and maintained by EPE;
- Located on 23 acres at EPE's Eastside Operations Center, far east El Paso;
- Approximately 33,000 solar panels;
- Project technology: Thin film modules, single-axis tracking;
- COD: May 2017

Holloman AFB – 5MW Solar Project

- 5 MW PV system that is owned, operated and maintained by EPE;
- Located on 43 acres at Holloman AFB;
- Approximately 56,000 solar panels;
- Project technology: Ground mounted single-axis tracking;
- Commercial Operation- early 2018

