

Plutonium Finishing Plant Closure Project

618-10 Burial Ground Project

Doug S. Shoop, Richland Operations Office

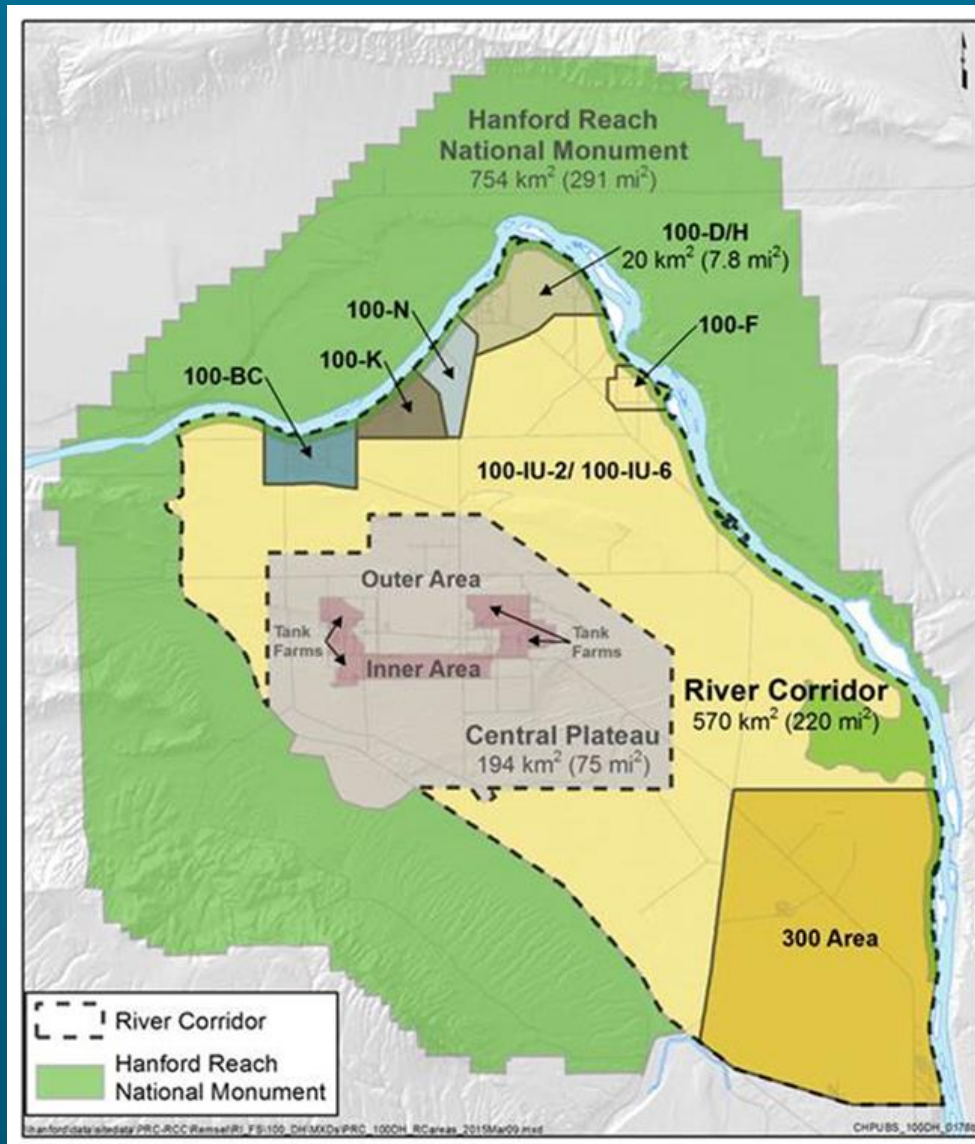
Ty Blackford, CH2M HILL Plateau Remediation Company



**RICHLAND
OPERATIONS OFFICE**
United States Department of Energy

ch2m.
SM

Columbia River Corridor



River Corridor Cleanup



618-10 Burial Ground History



618-10 Burial Ground Characterization



618-10 Burial Ground Mock-up Testing



618-10 Burial Ground Remediation



618-10 Burial Ground

YouTube Video Link [Here](#)

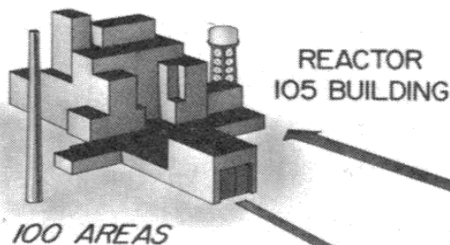
Plutonium Finishing Plant



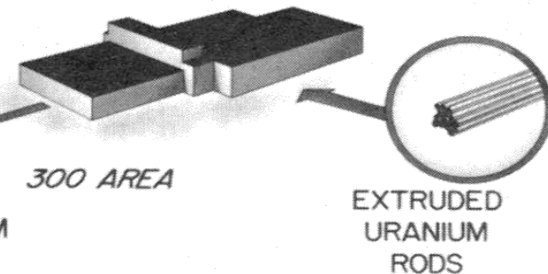
Path of Plutonium Production

HANFORD ATOMIC PRODUCTS OPERATION-PRODUCT FLOW

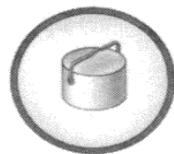
URANIUM IRRADIATION



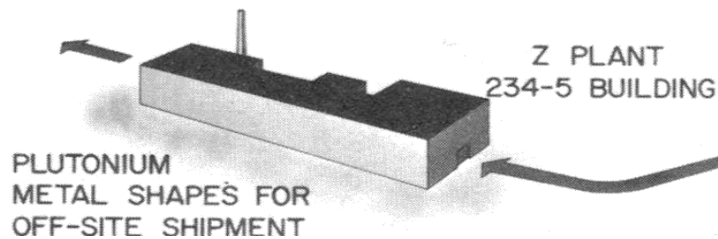
URANIUM METAL PREPARATION



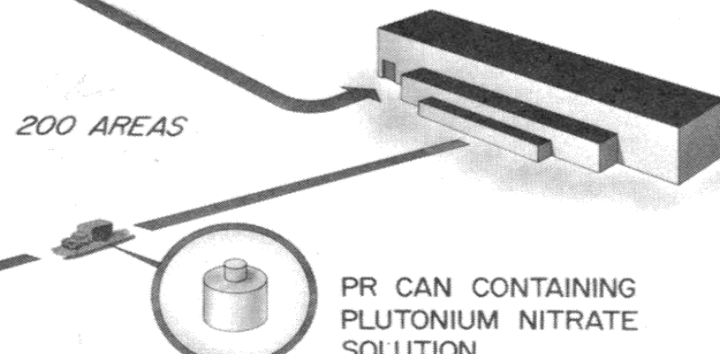
CASKS CONTAINING
IRRADIATED
URANIUM SLUGS



PLUTONIUM METAL FABRICATION



PLUTONIUM SEPARATION



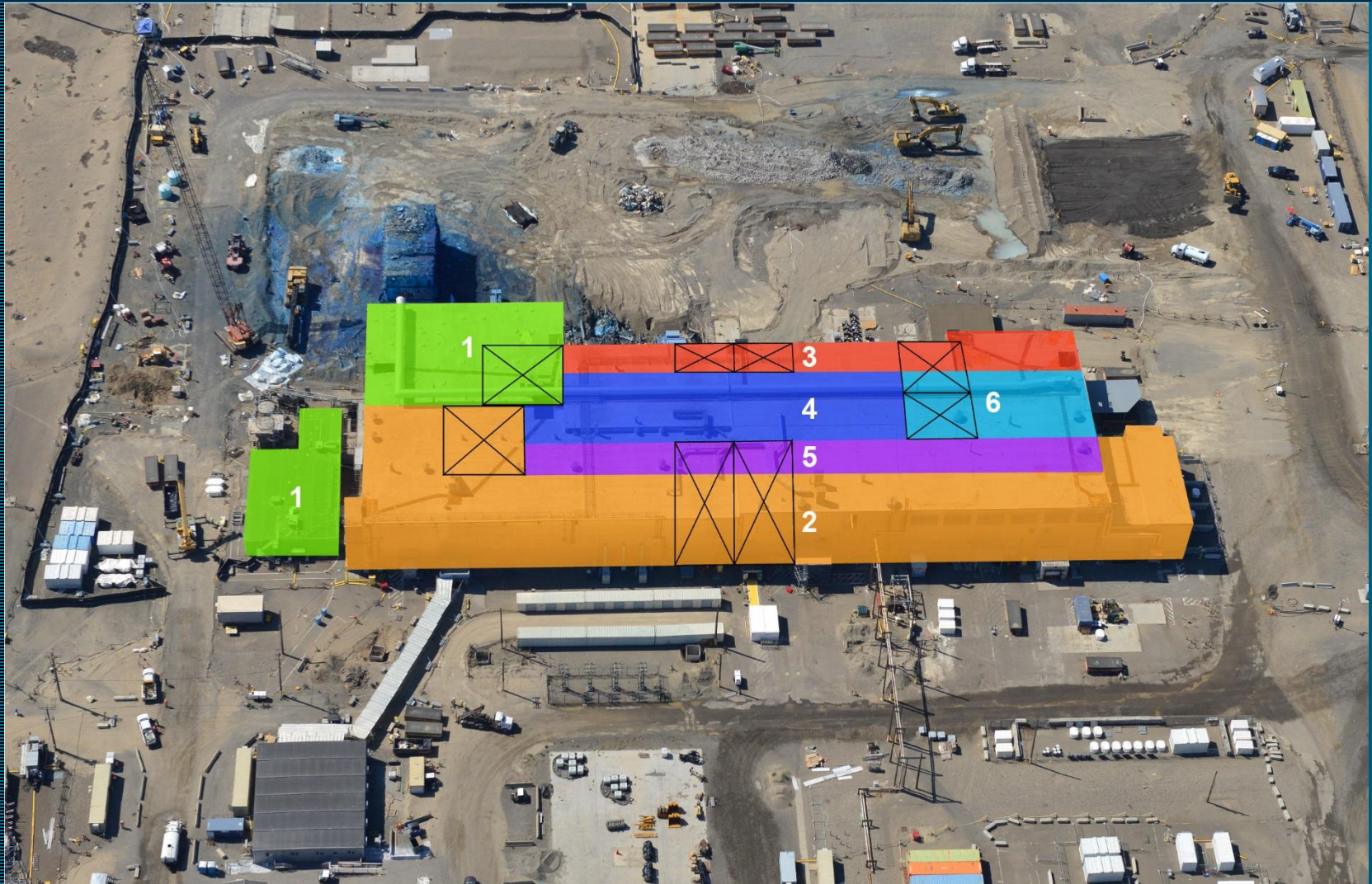
Plutonium Finishing Plant History



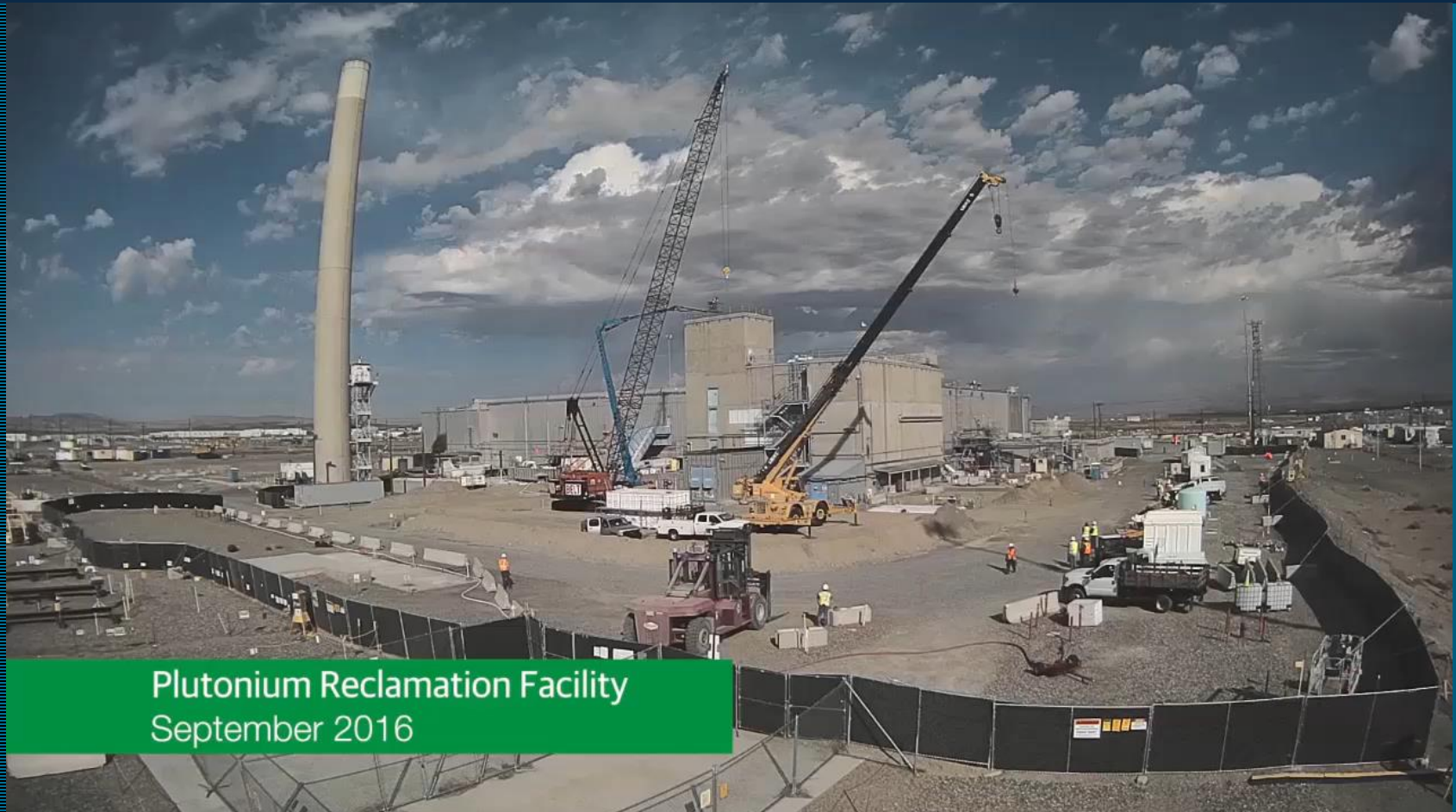
**RICHLAND
OPERATIONS OFFICE**
United States Department of Energy

ch2m.

Zone-by-Zone Demolition



Plutonium Finishing Plant Demolition Progress



Time Lapse Video [Here](#)

Hazard Monitoring, Mitigation and Control



Work Continues on the Central Plateau

INNER & OUTER AREA OPERABLE UNITS

OPERABLE UNIT LEGEND

- 200-PW-1/3/6 and 200-CW-5 (EPA)
- 200 West (EPA)
- 200 East / IS-1 (Ecology)
- Canyons & Associated Waste Sites (see map)
- 200-SW-2 (Ecology)
- Deep Vadose Zone (Ecology)
- Approved Waste Disposal Sites (n/a)
- Tank Farms (n/a)

