



# Hurricane Irma & Hurricane Harvey

## Event Summary (Report #26)

<b>REPORT TIME &amp; DATE:</b>	4:00 PM EDT   Monday, September 11, 2017
<b>INCIDENT START DATE:</b>	Friday, August 25, 2017
<b>PRIMARY LOCATION(S):</b>	Irma: AL, FL, GA, SC, Puerto Rico, & USVI // Harvey: TX & LA
<b>REPORT DISTRIBUTION:</b>	Public

### EXECUTIVE SUMMARY

As of 2:00 PM EDT, Tropical Storm Irma was 50 miles south-southeast of Albany, Georgia, moving north-northwest with maximum sustained winds of 60 MPH, which extend up to 415 miles from the center. Irma will continue to move over southwestern Georgia today, and move into eastern Alabama Tuesday.

DOE is closely monitoring the storm and ESF #12 responders are supporting FEMA Incident Management Assistance Teams (IMAT) in Puerto Rico, St. Thomas, and St. Croix. ESF #12 responders are also deployed to the FEMA Region II and IV Coordination Centers, the Alabama State Emergency Operations Center, Florida State Emergency Operations Center, and the Georgia State Operations Center.

### Irma Electricity Sector Summary (as of 2:30 PM EDT Monday)

- As of 2:30 PM EDT, Florida had 6,117,024 customer outages (59% of total state customers)
  - Florida Power and Light (FPL) has 3,543,450 customer outages.
  - Duke Energy Florida Inc. has 1,188,175 customer outages.
  - Tampa Electric (TECO) has 322,194 customer outages.
  - FPL has 17,000 personnel from over 30 states on standby to aid restoration efforts.
- As of 11:40 AM EDT, the Puerto Rico Electric Power Authority (PREPA) was reporting 368,682 customers (23.5% of total customers) are without power.
- The U.S. Virgin Islands Water and Power Authority (WAPA) reported several feeders on St. Thomas are re-energized. The airport, hospital, Long Base Substation, and the Yacht Haven and Mafolie areas are back online. There are currently efforts to get another generating unit online.

### Irma Oil and Natural Gas Sector Summary (as of 2:30 PM EDT Monday)

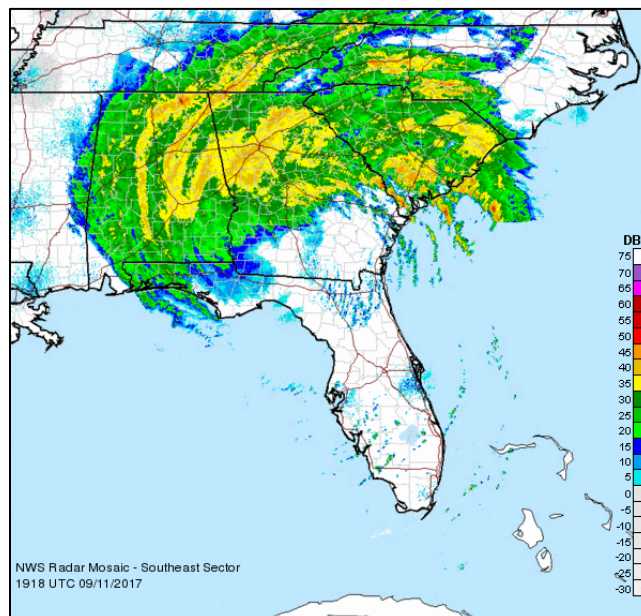
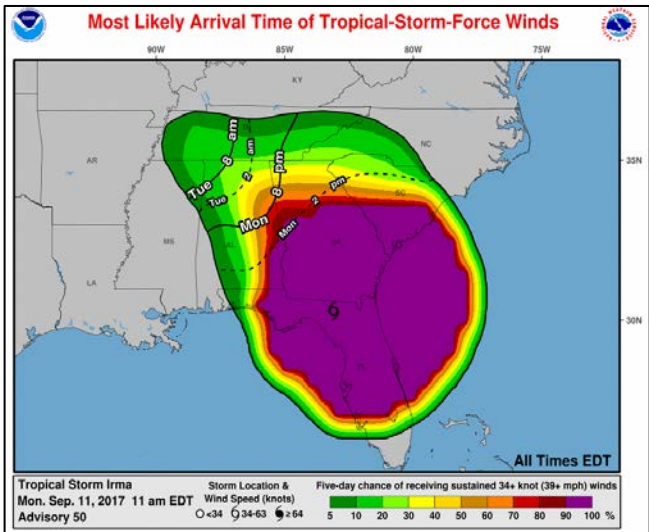
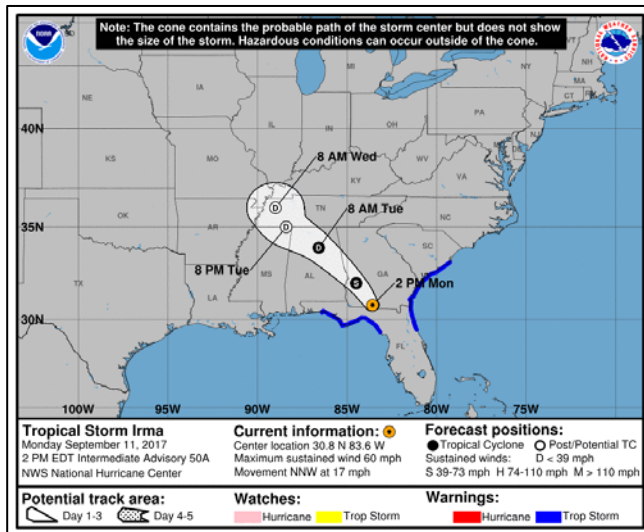
- Ports in eight port sectors in the Caribbean, Florida, North Carolina, and South Carolina are either closed or open with restrictions.
- Petroleum pipelines and terminals in the path of Irma are implementing hurricane preparedness procedures and many have shut down in advance of the storm.

**TROPICAL STORM IRMA INCIDENT OVERVIEW**

As of 2:00 PM EDT, Irma was 50 miles south-southeast of Albany, Georgia moving north-northwest at 17 MPH, with maximum sustained winds of 60 MPH (tropical storm). Tropical storm-force winds ( $\geq 39$  MPH) extend up to 415 miles from the center. On the forecast track, the center of Irma will continue to move over southwestern Georgia today, and move into eastern Alabama Tuesday morning. Irma is expected to continue to weaken and is likely to be downgrade to a tropical depression on Tuesday.

A tropical storm warning remains in effect from north of the Suwannee River to the Okaloosa-Walton County line along the Gulf Coast of Florida and from the Flagler – Volusia County line in Florida to south of the Santee River in South Carolina as well as most of northern Florida, Georgia and eastern Alabama.

Storm surge warnings also remain in effect and storm surge is possible throughout coastal regions under the tropical storm warning. If peak surge occurs during high tide, a storm surge of 2 to 4 feet is possible in Tampa Bay, with 4 to 6 feet from Clearwater Beach to Ochlocknee River and from south of the Santee River to Fernandina Beach. Fernandina Beach to the Flagler – Volusia County line, including the St. Johns River, may experience storm surge of 3 to 5 feet.



# Hurricane Irma

## ELECTRICITY SECTOR

### IMPACTS TO PUERTO RICO AND U.S. VIRGIN ISLANDS

- As of 11:40 AM EDT, September 11, the Puerto Rico Electric Power Authority (PREPA) is reporting 368,682 customers (23.5% of total customers) are without power.
- As of 8:10 AM EDT, September 11, the U.S. Virgin Islands Water and Power Authority (WAPA) reported several feeders on St. Thomas are energized. The airport, hospital, Long Base Substation, and the Yacht Haven and Mafolie areas are energized. There are currently efforts to get another generating unit online.
  - Restoration efforts will continue as WAPA works to get critical facilities reenergized on the islands of St. Thomas and St. John. These islands are interconnected and served by one electric grid.
  - DOE is working closely with WAPA, the American Public Power Association, and FEMA on a plan to facilitate mutual aid for the U.S. Virgin Islands.
- The island of St. Croix has 6,905 outages. All underground feeders on the island of St. Croix are operational as WAPA continues restoration efforts.
  - WAPA is expected to issue a restoration schedule for communities and neighborhoods across St. Croix still without electrical service.

ELECTRICITY OUTAGES AS OF 11:40 AM EDT 09/11/2017			
Impacted State	Current Confirmed Customer Outages	Percent of Confirmed State Customers without Power	24-hr Peak Customer Outages
Puerto Rico	368,682	23.5%	431,064
St. John	2,893	100%	2,893
St. Thomas	19,574	99%	19,581
St. Croix	6,905	31%	6,905
<b>Total</b>	<b>398,054</b>	-	*

*\*There is no sum of the Peak Customer Outage column because peaks for individual utilities occur at different times; a total would not reflect peak outages.*



## IMPACTS TO CONTINENTAL UNITED STATES

As the storm continues to cause damage to electric systems further inland, damage assessments and restoration efforts have begun by utilities, including Tampa Electric, Florida Power & Light, and Duke Energy Florida. While there is flooding in certain regions of Florida, the full impacts of the storm are not known at this time. A nationwide mutual assistance process is underway, one of the largest in US history, involving 49 states and Canada.

### Florida

- As of 2:30 PM EDT, September 11, Florida has 6,117,024 customer outages (59% of total state customers).
  - Florida Power and Light (FPL) has 3,543,450 customer outages.
  - Duke Energy Florida Inc. has 1,188,175 customer outages.
  - Tampa Electric (TECO) has 322,194 customer outages.
- As of 4:00 AM EDT, September 11, Turkey Point Nuclear Plant staff exited their declaration of an unusual event as winds and rains have diminished at the site.
  - The Nuclear Regulatory Commission (NRC) has three inspectors at the site, but is now assessing steps to return to normal inspection staffing between tomorrow, September 12 and Wednesday, September 13.
- Turkey Point Unit 4 remains under a “hot shutdown” at normal operating pressure and temperature following a manual trip of the reactor around 7:00 PM EDT, September 10.
  - NRC reported on today, September 11 that the shutdown was uncomplicated and the plant is in a safe condition.
- As of September 11, operators at St. Lucie Nuclear Plant are reducing power on Unit 1 due to salt buildup on insulators in the switchyard that supplies offsite power. Plant staff are working to resolve the situation.
  - Unit 2 remains at 100% power.
  - NRC has 2 inspectors remain at the site, but is now accessing steps to return to normal inspection staffing between tomorrow, September 12 and Wednesday, September 13.
- As of 11:00 AM EDT, September 11, FPL crews were in the field working to restore power on Miami Beach and are conducting damage assessment throughout their service area.
  - FPL has mobilized the largest restoration workforce ever assembled in the U.S. with 18,000 personnel from over 30 states. FPL has stood up 22 staging sites in order to expedite restoration.
- TECO has requested 6,000 personnel through mutual aid assistance to assist in restoration efforts. Damage and restoration assessment is underway.
- As of 12:30 PM EDT, September 11, Duke Energy Florida had crews departing Winter Garden Operations Center in Northwest Orlando to conduct restoration efforts.
  - Duke Energy Florida currently has 8,000 personnel staged in Georgia to assist in response and restoration efforts.
- At 12:01 AM, September 10, Keys Energy Services control center crews attempted to re-energize the tieline, the Keys’ main electric transmission line, but it did not hold. The tieline will likely stay out for duration of storm.



**Georgia**

- As of 2:30 PM EDT, September 11, Georgia has 866,682 customer outages (9% of total state customers).
  - Georgia Power has 534,735 customer outages.
  - Colquitt Electric Membership Corporation has 51,000 outages.
  - Satilla Rural Electric Member Corporation has 45,425 customer outages.
- Georgia Power reported that the damage and outages are primarily concentrated in Central, South, and Coastal Georgia. Georgia Power expects extensive damage and extended power outages to continue over the next 24 hours due to high winds and fallen trees.
  - Georgia Power has mobilized 3,400 personnel to respond and aid restoration efforts.
- The Hatch Nuclear Plant in Baxley, GA and the Farley Nuclear Plant in Dothan, AL have completed adverse weather preparation procedures, although it appears that projected winds will not be strong enough to affect plant operations. All units are currently at 100% power.

**South Carolina**

- As of 2:30 PM EDT, September 11, South Carolina has 184,471 customer outages (7.24% of total state customers).
  - South Carolina Electric and Gas (SCE&G) has 131,237 customer outages.
  - Berkeley Electric Coop has 16,920 customer outages.
  - Palmetto Electric Coop Inc. has 13,119 customer outages.
- Duke Energy Carolinas has 4,500 personnel staged in Western North Carolina and Upstate South Carolina ready to respond.
- South Carolina Electric & Gas Company (SCE&G) reports outages are under evaluation and are concentrated in the Beaumont and Charleston areas.

ELECTRICITY OUTAGES AS OF 2:30 PM EDT 09/11/2017			
Impacted State	Current Confirmed Customer Outages	Percent of Confirmed State Customers without Power	24-hr Peak Customer Outages
Florida	6,117,024	59%	6,117,024
Georgia	866,682	9%	866,682
South Carolina	184,471	7.24%	184,471
<b>Total</b>	<b>7,168,177</b>	-	*

*\*There is no sum of the Peak Customer Outage column because peaks for individual utilities occur at different times; a total would not reflect peak outages.*



## OIL &amp; GAS SECTOR

## PORTS

- The U.S. Coast Guard has set the following conditions for ports and waterways in the U.S. Southeast and Caribbean as a result of Hurricane Irma. Ports in eight port sectors are either closed or open with restrictions. Listed in the table are ports that receive petroleum products.

<b>Status of Southeast and Caribbean Ports as of 02:00 PM EDT 09/11/2017</b>			
<b>Port</b>	<b>Receipts (b/d)*</b>	<b>Status</b>	<b>Date Stamp</b>
<b>Sector Miami</b>			
Port Everglades	298,000**	Port Condition Zulu. Closed.	09/08/17
Miami	1,500	Port Condition Zulu. Closed.	09/08/17
Port of Palm Beach	500	Port Condition Zulu. Closed.	09/08/17
<b>Sector Key West</b>			
All Ports	--	Port Condition Zulu. Closed.	09/08/17
<b>Sector St. Petersburg</b>			
Tampa	273,700	Port Condition Zulu. Closed.	09/09/17
Port Manatee	700	Port Condition Zulu. Closed.	09/09/17
<b>Sector Jacksonville</b>			
Port of Jacksonville	69,800	Port Condition Zulu. Closed.	09/09/17
Port Canaveral	32,200	Port Condition Zulu. Closed.	09/09/17
<b>Sector Mobile</b>			
Mobile (AL)	168,000	Port Condition X-Ray. Open with restrictions.	09/09/17
Pascagoula (MS)	(outbound)	Port Condition X-Ray. Open with restrictions.	09/09/17
Pensacola (FL)	11,400	Port Condition Yankee. Open with restrictions.	09/09/17
Panama City (FL)	8,500	Port Condition Zulu. Closed.	09/10/17
Gulf Intercostal Waterway	--	Port Condition Zulu (mm 205 to mm 375) Port Condition Yankee (mm 170 to mm 205) Port Condition X-Ray (mm 45 to mm 170)	09/10/17
<b>Sector Savannah</b>			
Savannah	12,600	Port Condition Zulu. Closed.	09/09/17
<b>Sector Charleston</b>			
Charleston	16,500	Port Condition Yankee. Open with restrictions.	09/10/17
<b>Sector North Carolina</b>			
Wilmington	11,500	Open.	09/09/17
<b>Sector Hampton Roads</b>			
Hampton Roads	7,400	Open.	09/06/17



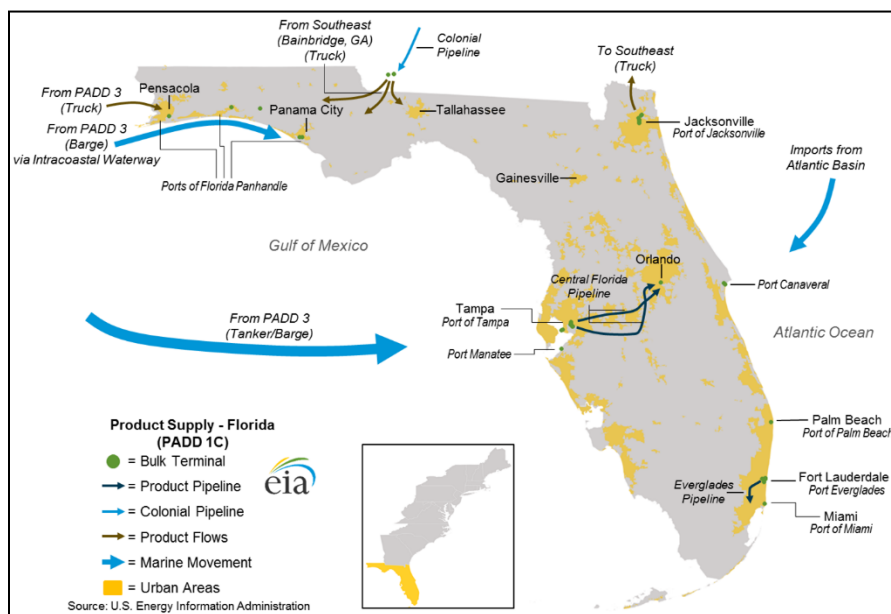
Sector San Juan			
Puerto Rico Ports	139,000**	Port Readiness Condition Four. Guayama is open with restrictions. All other ports are open with no restrictions.	09/09/17
U.S. Virgin Islands Ports	18,000**	Port Readiness Condition Four. Christiansted, St. Croix; St. John, Cruz Bay, USVI; Redhook, St. Thomas are open with restrictions. All other ports are closed (Zulu).	09/09/17

\*Transportation fuels (gasoline, distillate, and jet fuel) unless otherwise noted.

\*\*Includes bunker fuel and fuel oil and distillate for power generation.

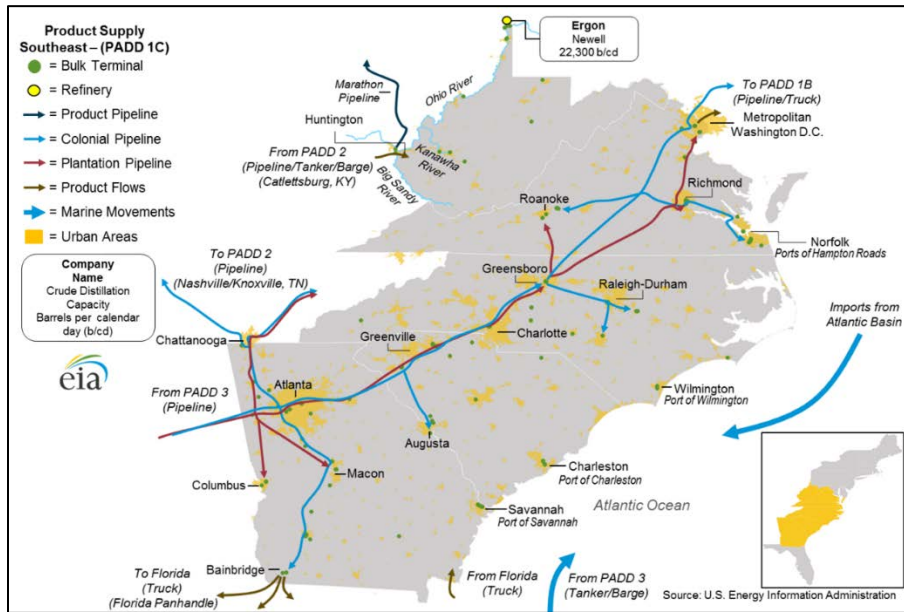
Source: Receipt data from U.S. EIA, USACE data (2013), EIA Company Level Imports

- Below is a map of key petroleum ports and petroleum product pipelines in Florida.



Source: EIA: <https://www.eia.gov/analysis/transportationfuels/padd1n3/>

- Below is a map of key petroleum ports and petroleum product pipelines in the Southeast region of the U.S.



Source: EIA: <https://www.eia.gov/analysis/transportationfuels/padd1n3/>

**GAS UTILITIES**

- Below is a list of gas distribution utilities in Florida and the Caribbean affected by Hurricane Irma.

Status of Florida and Caribbean Natural Gas Utilities as of 02:00 PM EDT 09/11/2017			
Pipeline	Service Area	Status	Date Stamp
Florida City Gas	Southeast Florida (Miami/Palm Beach)	Crews mobilizing, preparing for storm.	09/07/17
FPL	Throughout Florida	One gas line is running, other is cycled on and off as needed.	09/09/17
Florida PUC	Palm Beach, Ft. Meade, Indiantown	Experiencing no service interruptions.	09/10/17
Piedmont Natural Gas	Carolinas and Tennessee	Activated Severe Weather Preparedness Plan. Ensuring vehicles are fueled and availability of equipment.	09/11/17
TECO Peoples Gas	Throughout Florida	Crews mobilizing, preparing for storm.	09/07/17



# Hurricane Harvey

## OIL & GAS SECTOR

### PETROLEUM REFINERIES

- As of 02:00 PM EDT, September 11, four refineries in the Gulf Coast region were shut down, according to public reports. These refineries have a combined refining capacity of 734,300 b/d, equal to 7.6% of total Gulf Coast (PADD 3) refining capacity and 4.0% of total U.S. refining capacity.
- Seven refineries are in the process of restarting after being shut down. This process may take several days or weeks to start producing product, depending whether any damage is found during restart. Production should be assumed to be minimal until restart is completed. These refineries have a combined capacity 2,479,899 b/d, equal to 25.6% of total Gulf Coast (PADD 3) refining capacity and 13.4% of total U.S. refining capacity.
- At least four refineries in the Gulf Coast region were operating at reduced rates, according to public reports. These refineries have a combined total capacity of 1,164,000 b/d, equal to 12.0% of total Gulf Coast (PADD 3) refining capacity and 6.3% of total U.S. refining capacity. (NOTE: Actual crude throughput (production) reductions are lower than the total combined capacity).

### PORTS

- The U.S. Coast Guard has set the following conditions for ports and waterways in the U.S. Gulf Coast region as a result of Harvey. Eleven ports are closed or open with restrictions. Crude imports at these ports averaged 2,077,000 b/d from January through May 2017.

Status of Texas and Louisiana Gulf Coast Ports <i>as of 02:00 PM EDT 09/11/2017</i>			
Port	Crude Imports Jan-May 2017 (b/d)	Status	Date Stamp
<b>Sector Corpus Christi</b>			
Brownsville	--	Open.	08/31/17
Corpus Christi	245,000	Port Condition Recovery. Open with restrictions. Allowing vessels up to 43' draft to transit during daytime hours only.	09/06/17
<b>Sector Houston and Galveston</b>			
Freeport	133,000	Open. 24/7. 38' max draft.	09/05/17
Galveston	114,000	Port Condition Recovery. Open with restrictions. Ship channel also open with restrictions. Galveston Bay Entrance Channel, Outer Bar Channel, Inner Bar Channel, Bolivar Roads Anchorages, Bolivar Roads Channel, and Galveston Harbor open, no restrictions, 24/7.	09/08/17



Houston	646,000	Port Condition Recovery. Open with restrictions. Houston Ship Channel open 24/7 below Sidney Sherman bridge with draft restrictions: <ul style="list-style-type: none"> <li>Entrance Channel to Houston Cement West – 40-foot max draft.</li> <li>Houston Cement West to Sidney Sherman Bridge – 36-foot max draft.</li> </ul> Intracoastal Waterway open 24/7.	09/05/17
Texas City	134,000	Open. 24/7.	09/05/17
<b>Sector Port Arthur and Lake Charles</b>			
Beaumont	33,000	Open with restrictions. Shoaling, which caused port closure to ship traffic, was identified 9/10 near ExxonMobil and Port of Beaumont facilities. Max draft of 26 feet established for waters of Neches River from Light 68 to the Port of Beaumont. No daylight restrictions.	09/10/17
Lake Charles	218,000	Port Condition Recovery. Open with restrictions. 37 feet draft restrictions of the Calcasieu Ship Channel.	09/05/17
Nederland	--	Port Condition Recovery. Open with restrictions. 38.5 feet draft restrictions for Sabine-Neches Waterway.	09/09/17
Port Arthur	687,000	Port Condition Recovery. Open with restrictions. 38.5 feet draft restrictions for Sabine-Neches Waterway.	09/09/17
Port Neches	--	Port Condition Recovery. Open with restrictions. 38.5 feet draft restrictions for Sabine-Neches Waterway.	09/09/17
Sabine Pass	--	Port Condition Recovery. Open with restrictions. 38.5 feet draft restrictions for Sabine-Neches Waterway.	09/09/17

Source: U.S. Coast Guard

### TANKERS AND CRUDE IMPORTS

- As of 11:30 PM EDT, September 10, 54 oil vessels were waiting in anchorage off the Texas ports of Corpus Christi, Houston, Galveston, Freeport, Texas City, Beaumont, Nederland, Port Arthur, Port Neches, Sabine, and the Louisiana port of Lake Charles.



# Emergency Declarations & Waivers

## EMERGENCY DECLARATIONS

- Twelve states, including Puerto Rico and USVI, have declared state emergencies due to Harvey and Irma. Note that Kansas has not declared a State of Emergency, however is using its resources to assist states affected by Harvey. These declarations automatically waive select Federal Motor Carrier Safety Regulations (FMCSRs), including hours-of-service (HOS) regulations, for motor carriers hauling resources to aid in restoration efforts. The declarations exempt FCMSR in every state along the motor carrier’s route as long as the final destination is with the declared disaster areas. Some HOS waivers apply specifically to the movement of petroleum products in or through the state.
- In addition, the Federal Motor Carrier Safety Administration (FMCSA) issued a Regional Emergency Declaration for Hurricane Harvey exempting FMCSRs in the States of Texas and Louisiana. On August 31, the FMCSA expanded the Regional Emergency Declaration to additional states and Washington, DC. On September 6, the Regional Emergency Declaration was extended for states affected by Hurricane Irma. On September 7, the Irma Regional Declaration was expanded again to include states in the Mid-Atlantic and Northeast.
- The table below summarizes emergency declarations and HOS waivers issued by states in response to the impacts of Hurricane Harvey and Hurricane Irma.

PHMSA

**State Emergency Declarations and HOS Waivers as of 02:00 PM EDT 09/11/2017**

State	Details	Effective Dates		Status
		Start	End	
Regional (Multi-State)	<p>Regional Emergency Declarations and FMCSR waivers issued by FMCSA.</p> <p><b>For Harvey:</b> Applies to Alabama, Arkansas, Colorado, Connecticut, Delaware, Florida, Georgia, Illinois, Indiana, Kansas, Kentucky, Louisiana, Maryland, Mississippi, Missouri, New Jersey, New York, North Carolina, Ohio, Oklahoma, Pennsylvania, Tennessee, Texas, South Carolina, Virginia, Washington, D.C., and West Virginia.</p> <p><b>For Irma:</b> Applies to Alabama, Florida, Georgia, Mississippi, North Carolina, South Carolina, Tennessee, Connecticut, Delaware, Maine, Maryland, Massachusetts, New Hampshire, New Jersey, New York, Pennsylvania, Rhode Island, Vermont, Virginia, West Virginia, Washington D.C., the Commonwealth of Puerto Rico and the territory of the U.S. Virgin Islands.</p>	<p>For Harvey: 08/25/17</p> <p>Expanded for Harvey: 08/31/17</p> <p>For Irma: 09/06/17</p> <p>Expanded For Irma: 09/07/17</p>	<p>For Harvey: 09/30/17</p> <p>For Irma: 10/06/17</p>	Active



Alabama	State of Emergency/HOS waiver issued for petroleum products and petroleum-related supplies, goods, and services in the State.  International Registration Plan and International Fuel Tax Agreement requirement suspended for vehicles engaged in or travelling through Alabama for disaster relief efforts in Florida.	08/30/17  09/08/17	09/29/17  10/08/17	Active
Florida	State of Emergency/HOS waiver	09/04/17	11/03/17	Active
Georgia	State of Emergency/HOS waiver expanded to all counties in Georgia on 9/10.	For Harvey: 08/30/17 For Irma: 09/07/17 Expanded for Irma: 09/08/17 Expanded for Irma: 09/10/17	09/22/17	Active
Kansas	Governor acknowledged state of emergency in Texas and declared that licensing rules, registration and fuel tax permits, and oversize vehicle permit fees are waived for motor carriers and persons operating motor vehicles directly participating in the relief and restoration effort.	08/30/17	09/30/17	Active
Kentucky	State of Emergency/HOS waiver issued for transporters of food, water, medicine, fuel and other commodities within the affected areas to aid in emergency response of affected areas.  State of Emergency Declaration/HOS waiver for petroleum products.	08/28/17  08/31/17	09/27/17  09/30/17	Active  Active
Louisiana	State of Emergency.	08/23/17	TBD	Active
Michigan	State of Emergency/HOS waiver issued for petroleum products through the state.	08/31/17	09/15/17	Active
North Carolina	State of Emergency/HOS waiver issued for petroleum products.  State of Emergency/HOS waiver issued for petroleum products, and emergency relief supplies and services through the state.	08/31/17  09/07/17	09/30/17  10/06/17	Active  Active



Puerto Rico	State of Emergency/HOS waiver	09/04/17	--	Active
South Carolina	State of Emergency/HOS waiver issued for petroleum products through the state.	09/06/17	10/06/17	Active
Texas	State of Disaster declared for 61 counties in Texas.	08/23/17 Expanded: 08/30/17 Expanded: 09/01/17	TBD	Active
Virginia	State of Emergency/HOS waiver issued for petroleum products through the state.	For Harvey: 09/01/17 For Irma: 09/07/17	For Harvey: 09/15/17 For Irma: 06/30/18, or rescinded.	Active
U.S. Virgin Islands	State of Emergency/HOS waiver	09/04/17	--	Active

Sources: [U.S. Department of Transportation](#); Governor Office Websites

**FUEL WAIVERS**

- The table below lists fuel-related waivers issued by the U.S. Environmental Protection Agency (U.S. EPA) and State agencies for Hurricanes Harvey and Irma.
- On August 30, U.S. EPA issued a multi-state (13 states) waiver for requirements of low-RVP conventional gasoline and reformulated gasoline (RFG) in response to Hurricane Harvey. The next day, the waiver was expanded to include 38 states and Washington, DC. On September 7, in preparation for Hurricane Irma, the EPA extended the temporary waiver until September 26. In addition, EPA extended the Low Volatility SIP waiver in Texas and other federally-enforceable areas through September 16.

State Fuel Waivers as of 02:00 PM EDT 09/11/2017					
State	Waiver	Issued By	Effective Dates		Status
			Start	End	
Multi-state waiver	<b>RVP</b> standard waived for gasoline sold in affected counties where low-RVP gasoline is required (9.0 RVP or lower). Allows sale of gasoline up to 11.5 psi RVP in all states located in PADD 1, PADD 2, and PADD 3. <b>RFG</b> standard is also waived in the designated regions. Also waived are provisions prohibiting the blending of RFG blendstock with conventional gasolines or blendstocks.	U.S. EPA	For Harvey: 08/30/17  Expanded for Harvey: 08/31/17  Extended for Irma: 09/07/17	For RVP: 09/15/17  For RFG: 09/26/17	Active
TX	<b>RFG</b> requirement waived in Houston-Galveston-Brazoria areas. Waiver expanded to four-county Dallas-Fort Worth RFG area 8/26. Allows the sale or distribution of conventional gasoline.	U.S. EPA	08/25/17  Expanded: 08/26/17	09/15/17	Active



State Fuel Waivers as of 02:00 PM EDT 09/11/2017					
State	Waiver	Issued By	Effective Dates		Status
			Start	End	
TX	<b>7.8 psi RVP</b> standard waived for gasoline sold in 20 counties where low-RVP gasoline is required and are also under the Governor's Disaster Declaration. Waiver expanded to 98 counties required to use low-RVP fuel 8/26. Allows sale of gasoline up to 9.0 psi RVP.	U.S. EPA	08/25/17	09/16/17	Active
TX	Limited waiver of highway diesel fuel red dye requirements. Allows sale, distribution, and use of red dye NRLM diesel fuel for use in highway diesel vehicles, but diesel fuel must meet 15 ppm standard.	U.S. EPA	08/29/17	09/15/17	Active
FL	Limited waiver of highway diesel fuel red dye requirements. Allows sale, distribution, and use of red dye NRLM diesel fuel for use in highway diesel vehicles, but diesel fuel must meet 15 ppm standard.	U.S. EPA	09/06/17	09/22/17	Active
LA	RVP requirements of 7.8 psi and 9.0 psi waived in applicable areas. Permits the sale or distribution of winter gasoline with an 11.5 psi RVP.	State of Louisiana	08/29/17 Expanded: 08/30/17	09/15/17	Active
MI	<b>RVP</b> regulations waived. Permits the transportation and sale of motor fuels 9.0 psi RVP in Wayne, Oakland, Macomb, St. Clair, Livingston, Washtenaw, Monroe, and Lenawee counties, and up to 11.5 psi RVP elsewhere in Michigan.	State of Michigan	08/31/17	09/15/17	Active
MS	<b>RVP</b> standards of 9.0 psi waived. Permits the sale or distribution of winter gasoline with an 11.5 psi RVP.	State of Mississippi	08/30/17	09/15/17	Active
SC	<b>RVP</b> standards of 9.0 psi waived. Permits the sale or distribution of winter gasoline with an 11.5 psi RVP. Allows the comingling of <b>RFG</b> with conventional gasoline. Waives butane blending and T V/L = 20 requirements.	State of South Carolina	09/07/17	10/31/17	Active
VA	Waived the <b>RVP</b> limit for gasoline ethanol blends prescribed by regulations. Extended waiver to apply through duration of Hurricane Irma impact on 9/8.	State of Virginia	09/01/17 Extended: 09/08/17	Until further notice.	Active

Sources: U.S. Environmental Protection Agency; State Governments



**OTHER WAIVERS**

- On September 8, the Acting Secretary of **Homeland Security** [waived Jones Act](#) requirements for shipping refined petroleum products –including gasoline, diesel and jet fuel— to Florida for a 7-day period. The waiver of the Jones Act will allow foreign flag vessels to bring in fuel from New York, Pennsylvania, Texas, and Louisiana to South Carolina, Georgia, Florida and Puerto Rico to help with fuel shortages amid the threat from Hurricane Irma.
- On September 8, 2017, **PHMSA** issued an Emergency Waiver Order under 49 U.S.C. 5103 and Stafford Act declarations made for the U.S. Virgin Islands, Puerto Rico, Florida, and South Carolina, to persons conducting operations under the direction of the Environmental Protection Agency and the U.S. Coast Guard that support appropriate actions to prepare for, respond to, and recover from a threat to public health, welfare, or the environment caused by actual or potential oil and hazardous materials incidents resulting from Hurricane Irma in Puerto Rico, U.S. Virgin Islands, Florida, and South Carolina. On September 10, 2017, based on a Stafford act emergency declaration, PHMSA amended this order to include Georgia.
- On September 1, **PHMSA** issued an Emergency Stay of Enforcements for operators affected by Hurricane Harvey. The declaration states that PHMSA does not intend to take any enforcement action relating to their noncompliance with certain operator qualification requirements, or pre-employment and random drug testing requirements, arising from the use of personnel for pipeline activities related to response and recovery. On September 7, PHMSA issued an enforcement stay for the waiver to include states affected by Hurricane Irma. The states included in this extension are Florida, Georgia, North Carolina, South Carolina, and Puerto Rico.
- On September 5, the **Federal Energy Regulatory Commission (FERC)** approved an emergency waiver tariff, effective immediately, allowing the pipeline system to accept 11.5 RVP gasoline (A3) to fill nominations for 7.8 RVP gasoline (A1) and 9.0 RVP gasoline (A2); and to ship conventional gasoline in lieu of reformulated gasoline. Colonial’s tariffs and tariff practices would not normally permit it to accept product that does not conform to the specifications of the product that was nominated.

