



# Hurricanes Maria, Irma, and Harvey

## September 25 Event Summary (Report #46)

<b>REPORT TIME &amp; DATE:</b>	4:00 PM EDT   Monday, September 25, 2017
<b>INCIDENT START DATE:</b>	Friday, August 25, 2017
<b>PRIMARY LOCATION(S):</b>	TX, LA, FL, GA, NC, SC, Puerto Rico, & USVI
<b>REPORT DISTRIBUTION:</b>	Public

*Note: DOE will continue to phase out information related to Hurricanes Irma & Harvey as appropriate and may begin to provide a separate report in needed.*

### EXECUTIVE SUMMARY

Hurricane Maria made landfall on the southern coast of Puerto Rico around 6:15 AM EDT on Wednesday, September 20, after passing approximately 15 miles south-southwest of St. Croix. As of Monday, Maria continues is moving north, in the western Atlantic, 300 miles south-southeast of Cape Hatteras.

DOE is supporting response efforts for Hurricane Maria and continues to support restoration efforts related to Hurricanes Harvey and Irma. ESF #12 responders are deployed to St. Thomas and St. Croix in support of FEMA Incident Management Assistance Teams and responders are en route to Puerto Rico. ESF #12 responders are also deployed to the National Response Coordination Center and an advanced team from the Western Area Power Administration is on St. Thomas to provide mutual aid support.

### Electricity Sector Summary (as of 2:30 PM EDT Monday)

- Puerto Rico: Nearly all 1.57 million electricity customers in Puerto Rico remain without power. Damage assessments are underway across the island and restoration efforts have begun, focusing on critical facilities. Initial mutual aid crews from New York arrived late last week
- USVI: The majority of the 55,000 customers across the USVI remain without power due to impacts from Maria and Irma. Some critical facilities have been restored; however, there have been issues with consistency. Potable water is available; however, ensuring reliable power to the water processing plants remains a priority. An advance team from the Western Area Power Administration arrived on St. Thomas to provide mutual aid
- DOE is working closely with the local governments, FEMA, and industry to facilitate mutual aid

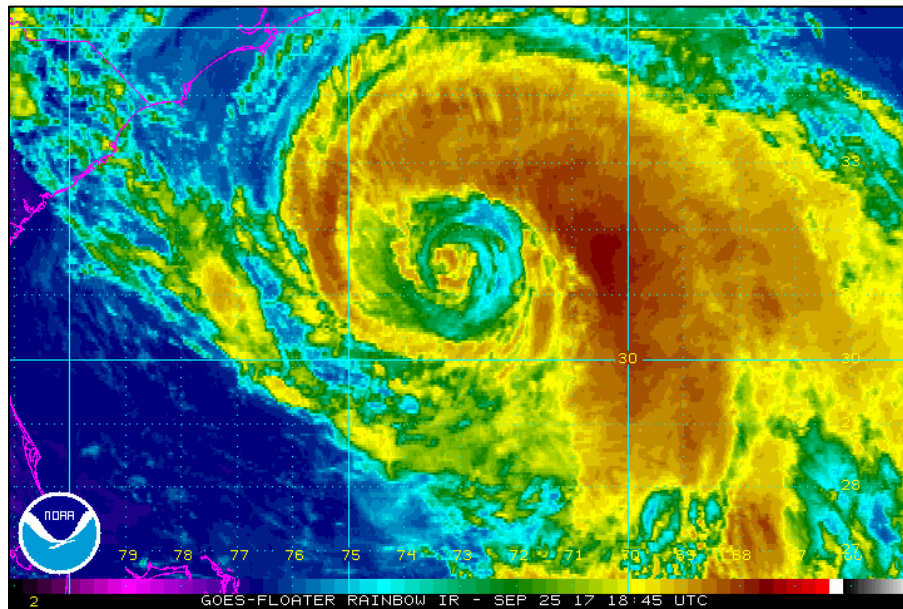
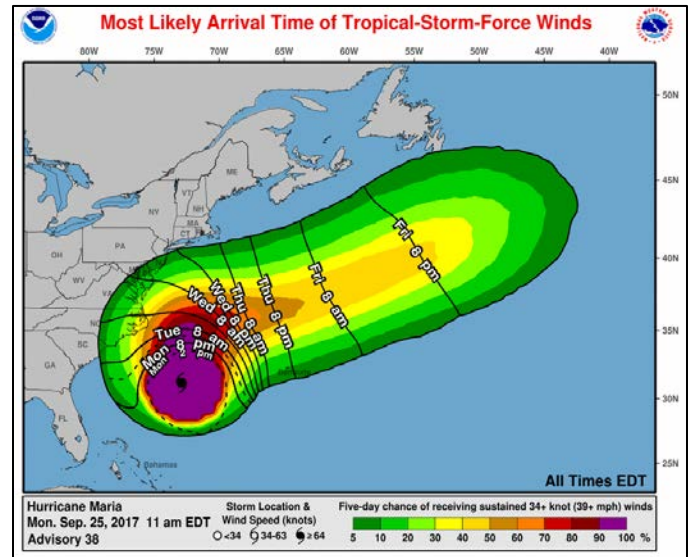
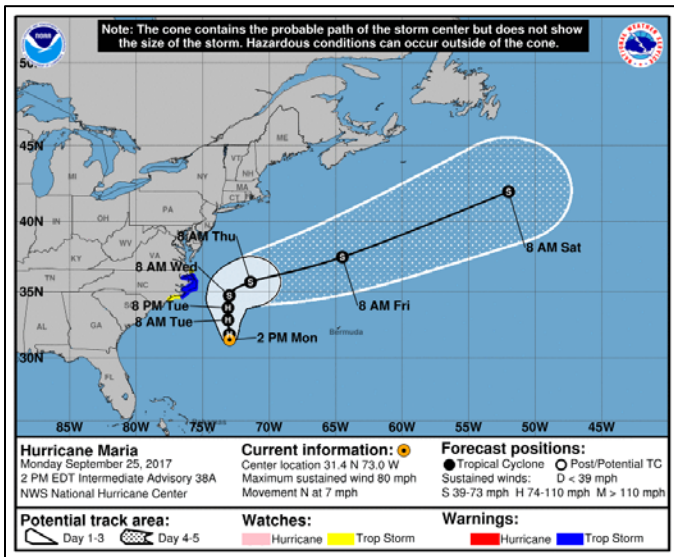
### Oil and Natural Gas Sector Summary (as of 2:30 PM EDT Monday)

- DOE, FEMA, DLA, and other Federal partners are working to facilitate fuel deliveries across the U.S. Virgin Islands and Puerto Rico for generators at critical facilities and response efforts
- DOE is working with EIA to assess fuel supplies and detailed status of facilities

### HURRICANE MARIA OVERVIEW

As of 2:00 PM EDT, Hurricane Maria was 300 miles south-southeast of Cape Hatteras, North Carolina, moving north at 7 MPH with maximum sustained winds of 80 MPH (category 1). Hurricane-force winds extend outward up to 90 miles and tropical storm-force winds extend outward up to 230 miles. Additional weakening is forecast over the next 48-hours.

Maria is expected to continue moving north through Tuesday night, before beginning an easterly turn on Wednesday. On the forecast track, the center of Maria will move well east of the southeast coast of the United States during the next day or two. The centerline of the forecast remains well offshore; however, a tropical storm warning has been issued for portions of the coast of North Carolina due to the potential for tropical storm-force winds, storm surge, and heavy surf on Tuesday and Wednesday.



# Hurricane Maria

## ELECTRICITY SECTOR

### IMPACTS TO PUERTO RICO AND U.S. VIRGIN ISLANDS

ELECTRICITY OUTAGES AS OF 2:00 PM EDT 09/25/2017			
Impacted State	Current Estimated Customer Outages	Percent of Estimated Customers without Power	24-hr Peak Customer Outages
Puerto Rico	~1,569,796	~100%	~1,569,796
<b>Total</b>	<b>~1,569,796</b>	--	--

#### Puerto Rico

- The Puerto Rico Electric Power Authority (PREPA) continues to report near 100% of total customers in Puerto Rico remain without power, with the exception of facilities on generators and some critical facilities.
  - As of early September 25, Governor Ricardo Rosselló confirmed that the Rio Piedras Medical Center and the Hima San Pablo Hospital have electrical power.
- Initial reports by PREPA suggest that there has been significant damage to portions of the transmission and distribution systems across the island.
- Governor Rosselló has extended the island’s curfew and dry laws for an indefinite period to support response activities. Residents not identified as supporting the response efforts must remain in their homes and shelters from 7:00 PM to 5:00 AM local time until further notice.
- DOE is coordinating with PREPA, FEMA, and industry to transport crews to the island to provide mutual aid, as needed. Initial crews from New York have arrived to support damage assessments.

#### U.S. Virgin Islands

- The majority of customers across the U.S. Virgin Islands (USVI) remain without power. Most customers on St. Croix lost power due to Hurricane Maria and St. Thomas and St. John previously experienced extensive power outages from Hurricane Irma. There has been limited restoration across the islands, mainly to critical facilities and some communities.
- Assessments will be made over the next several days to determine the extent of damage to the U.S. Virgin Islands Water and Power Authority’s (VIWAPA) distribution systems. Restoration plans will be developed and made available once the damage assessment process is completed. The complete restoration schedule cannot be developed until the conclusion of assessments.
- DOE is working closely with industry and FEMA to facilitate mutual assistance for the USVI.



**St. Thomas & St. John**

- There is limited electricity distribution on St. Thomas. Portion of five feeders are partially energized. As of 12:45 PM EDT, September 24, Cyril E. King Airport was without power. There were scheduled to be attempts to repair Generator Unit #15 to get the airport back online by Sunday evening; however, updates are unavailable at this time.
- Crews continued work in the following areas on Friday and Saturday: Lindbergh Bay, PG Gas / GERS, Estate Thomas and the Oswald Harris Court housing community.
- Over the coming days, work will be focused on the “A” feeders which run from mid-town to the west end. Over the next few weeks, crews will work on the paths of Feeders 6A to the west end, 7A to Estate Altona, and 8A and 9A into Savan. All of these feeders extend outwards from the Randolph Harley Power Plant.
- Western Area Power Administration’s eight-person advance team has arrived on St. Thomas and has begun damage assessments and restoration work on the island in support of VIWAPA
- Key water processing facilities are providing potable water in St. Thomas and St. John.
- Additional materials for restoration efforts are expected to arrive this week.

**St. Croix**

- Portions of two additional feeders on St. Croix were energized Saturday. These feeders are in addition to the electrical service being provided to the Luis Hospital and the Rohlsen Airport. Customers on sections of Feeder 1A, which serves the downtown Christiansted area and Feeder 8B which originates at the Midland substation and runs to the west end of the island up to the Frederiksted ball park had their service restored.
  - Over the coming days, crews will continue to work on re-energizing more areas in downtown Christiansted and in Frederiksted.
- Both the Contentment and Richmond pump stations are online on St. Croix. Potable water service is being provided to some locations while the Kingshill tank is gaining additional storage.



## OIL &amp; GAS SECTOR

## PORTS

- The U.S. Coast Guard has set the following conditions for ports and waterways in Sector San Juan. All ports in the sector are listed.

Status of Ports as of 2:00 PM EDT 09/25/2017			
Port	Average Imports (b/d) <sup>A</sup>	Status	Date Stamp
<b>Puerto Rico</b>			
San Juan	64,000	Open with restrictions. Daylight hours only.	09/23/17
Ponce	45,000	Port Condition Zulu. Closed.	09/19/17
Guayanilla		Port Readiness Condition IV. Open. Peerless Oil terminal open w/ restrictions, daylight operations only. Rest of port is open without restrictions.	09/24/17
Yabucoa	38,000	Port Condition Zulu. Closed.	09/24/17
Arecibo	<sup>B, C</sup>	Port Condition Zulu. Closed.	09/19/17
Catano	<sup>B</sup>	Port Condition Zulu. Closed.	09/19/17
Fajardo		Port Readiness Condition IV. Open with restrictions. Daylight operations only.	09/24/17
Culebra		Port Readiness Condition IV. Open with restrictions. Daylight operations only.	09/24/17
Vieques		Port Readiness Condition IV. Open with restrictions. Daylight operations only.	09/24/17
Guanica		Port Condition Zulu. Closed.	09/19/17
Guayama	<sup>B, C</sup>	Port Readiness Condition IV. Open with restrictions. Tug/barge only. No deep draft vessels. No vessels greater than 500 GT.	09/24/17
Mayaguez	<sup>B, C</sup>	Port Condition Zulu. Closed.	09/19/17
Roosevelt Roads	<sup>B</sup>	Closed. (Serves Navy Base).	09/24/17
Salinas/Aguirre	<sup>B, C</sup>	Port Readiness Condition IV. Open.	09/24/17
Talabo		Port Readiness Condition IV. Open.	09/24/17



<b>U.S. Virgin Islands</b>			
Christiansted, St. Croix	30,000	Port Condition Zulu. Closed.	09/18/17
Limetree Bay, St. Croix		Port Readiness Condition IV. Open with restrictions. Daylight operations only. Max draft 45 feet.	09/24/17
Krause Lagoon, St. Croix		Port Readiness Condition IV. Open with restrictions. Daylight operations only. Max draft 45 feet.	09/24/17
Frederiksted, St. Croix		Port Readiness Condition IV. Open with restrictions. Daylight operations only.	09/24/17
St. John	B, C	Port Readiness Condition IV. Cruz Bay is open with restrictions. Daylight transit only.	09/24/17
St. Thomas	B, C	Ports of Homeport Pier, Crowley, Tropical Shipping Terminal, Sandfill, WAPA, Red Hook, and East and West Gregorie Channels are open for daylight operations only. Charlotte Amalie Harbor is open for daylight operations only.	09/24/17

<sup>A</sup> All petroleum products, excluding asphalt.

<sup>B</sup> No direct foreign imports but receives petroleum products from larger ports by barge.

<sup>C</sup> Receives fuel for oil-fired power plant.

Source: Receipt data from U.S. Customs via Reuters EIKON (Jan-Aug. 2017 average)



# Hurricane Irma

## OIL & GAS SECTOR

### PORTS

- The U.S. Coast Guard has set the following conditions for ports and waterways in Florida as a result of Hurricane Irma. All ports in Florida, with the exception of ports in Sector Key West, are open without restrictions. This port table will be discontinued in future situation reports.

Status of Southeast and Caribbean Ports <i>as of 2:00 PM EDT 09/25/2017</i>			
Port	Average Receipts (b/d)*	Status	Date Stamp
<b>Sector Miami</b>			
Port Everglades	298,000**	Open without restrictions.	09/12/17
Miami	1,500	Open without restrictions.	09/13/17
Port of Palm Beach	500	Open without restrictions.	09/13/17
<b>Sector Key West</b>			
All Ports	--	Open with no draft restrictions. USCG has surveyed Key West Main Ship Channel, Cut A, Cut B, Key West Bight Channel, and the Key West Harbor, including the Upper and Lower Turning Basins, but have not surveyed other waterways. The Regulated Navigation Area, Safety Zones and Salvage Plan submission requirements are still in effect.	09/25/17
<b>Sector St. Petersburg</b>			
Tampa	273,700	Open without restrictions.	09/14/17
Port Manatee	700	Open without restrictions.	09/14/17
<b>Sector Jacksonville</b>			
Port of Jacksonville	69,800	Port Condition IV. Open without restrictions.	09/13/17
Port Canaveral	32,200	Port Condition IV. Open without restrictions.	09/14/17
<b>Sector Mobile</b>			
Mobile (AL)	168,000	Open. Port Status Normal.	09/11/17
Pascagoula (MS)	(outbound)	Open. Port Status Normal.	09/11/17
Pensacola (FL)	11,400	Open. Port Status Normal.	09/11/17
Panama City (FL)	8,500	Open. Port Status Normal.	09/12/17
Gulf Intercoastal Waterway	--	Open. Port Status Normal.	09/13/17

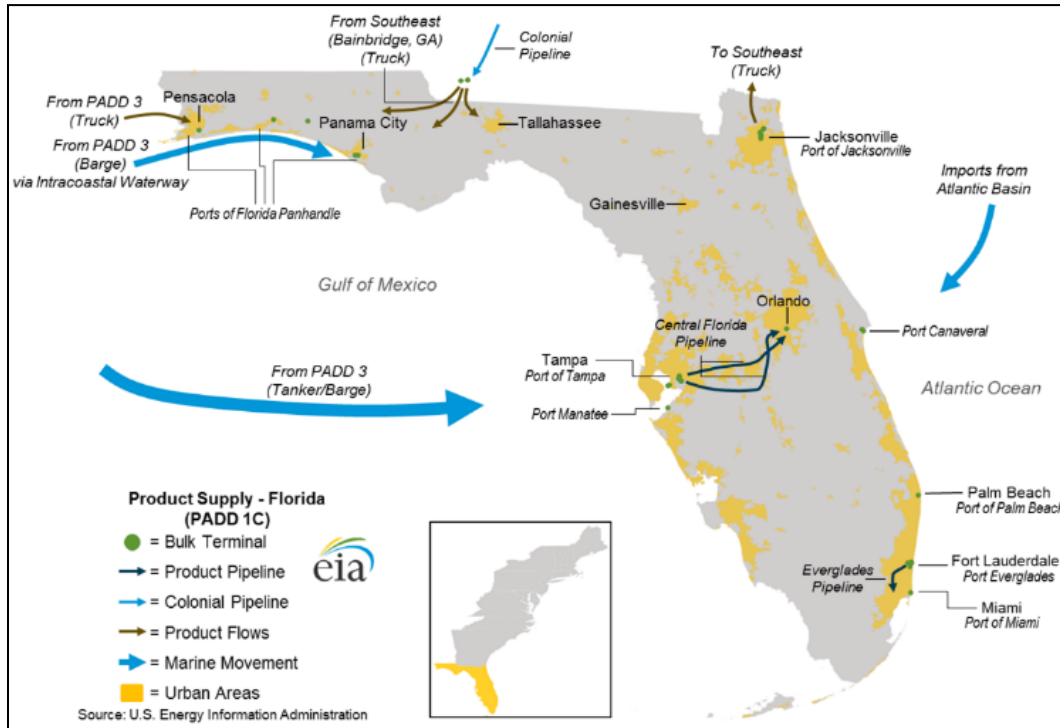
\*Average imports and domestic receipts of transportation fuels (gasoline, distillate, and jet fuel), unless otherwise noted.

\*\*Includes bunker fuel and fuel oil and distillate for power generation.

Source: Receipt data from [U.S. EIA](#), USACE data (2013), EIA Company Level Imports



- Below is a map of key petroleum ports and petroleum product pipelines in Florida.



Source: EIA: <https://www.eia.gov/analysis/transportationfuels/padd1n3/>



# Hurricane Harvey

## OIL & GAS SECTOR

### PETROLEUM REFINERIES

- As of 2:00 PM EDT, September 25, one refinery in the Gulf Coast region was shut down, according to the most recent publicly available reports. This refinery has a capacity of 225,000 b/d, equal to 2.3% of total Gulf Coast (PADD 3) refining capacity and 1.2% of total U.S. refining capacity. One shut refinery's status was corrected and another shut refinery returned to normal operations since the last report.
- No refineries are currently in the process of restarting after being shut down.
- Nine refineries in the Gulf Coast region were operating at reduced rates, according to the most recent publicly available reports. These refineries have a combined capacity of 3,221,970 b/d, equal to 33.2% of total Gulf Coast (PADD 3) refining capacity and 17.4% of total U.S. refining capacity. (NOTE: Actual crude throughput (production) reductions are lower than the total combined capacity). One refinery that was operating at reduced rates began operating at normal rates since the last report.



**PORTS**

- The U.S. Coast Guard has set the following conditions for ports and waterways in the Gulf Coast

<b>Status of Texas and Louisiana Gulf Coast Ports as of 2:00 PM EDT 09/25/2017</b>			
<b>Port</b>	<b>Crude Imports Jan-May 2017 (b/d)</b>	<b>Status</b>	<b>Date Stamp</b>
<b>Sector Corpus Christi</b>			
Brownsville	--	Open.	08/31/17
Corpus Christi	245,000	Port Condition Recovery. Open with restrictions. One way transits during daytime hours only. Must have 2 pilots for each vessel over 700 feet, all vessels over 40,000 gross registered tons, and all vessels over 35' draft.	09/22/17
<b>Sector Houston and Galveston</b>			
Freeport	133,000	Port Condition Seasonal Alert. Open with some restrictions. 41' max draft in port. Final update.	09/22/17
Galveston	114,000	Port Condition Seasonal Alert. Open with some restrictions. Final update.	09/22/17
Houston	646,000	Port Condition Seasonal Alert. Open with some restrictions. Final update.	09/22/17
Texas City	134,000	Port Condition Seasonal Alert. Open with some restrictions. Final update.	09/22/17
<b>Sector Port Arthur and Lake Charles</b>			
Sabine Pass	--	Port Condition Recovery. Open with restrictions.	09/18/17
Port Arthur	687,000	Port Condition Recovery. Open with restrictions.	09/18/17
Beaumont	33,000	Port Condition Recovery. Open with restrictions. Max draft of 31 feet on Neches River from ExxonMobil to Port of Beaumont due to shoaling.	09/19/17
Port Neches	--	Port Condition Recovery. Open with restrictions. Open to full 40 foot charted depth in Neches River Waterway from "SB" Buoy to ExxonMobil dock 4.	09/18/17
Nederland	--	Port Condition Recovery. Open with restrictions. Open to full 40 foot charted depth in Neches River Waterway from "SB" Buoy to ExxonMobil dock 4.	09/18/17
Lake Charles	218,000	Port Condition Recovery. Open with restrictions. 38 feet draft restrictions of the Calcasieu Ship Channel.	09/18/17

Source: U.S. Coast Guard



# Emergency Declarations & Waivers

## EMERGENCY DECLARATIONS

- Twelve states, including Puerto Rico and USVI, declared state emergencies due to Irma & Harvey. These declarations automatically waived select Federal Motor Carrier Safety Regulations (FMCSRs), including hours-of-service (HOS) regulations, for motor carriers hauling resources to aid in restoration. The declarations exempted FCMSR in every state along the motor carrier’s route as long as the final destination was with the declared disaster areas. Some HOS waivers applied specifically to the movement of petroleum products in or through the state. On September 18, USVI and Puerto Rico declared a state of emergency for Hurricane Maria and on September 20, President Trump approved a major disaster declaration.
- In addition, the Federal Motor Carrier Safety Administration (FMCSA) issued a Regional Emergency Declaration for Hurricane Harvey exempting FMCSRs in the States of Texas and Louisiana. On August 31, the FMCSA expanded the Regional Emergency Declaration to additional states and Washington, DC. On September 6, the Regional Emergency Declaration was extended for states affected by Hurricane Irma. On September 7, the Irma Regional Declaration was expanded again to include states in the Mid-Atlantic and Northeast. On September 11, an Amended Regional Declaration of Emergency was released that extended the exemption of FMCSRs in all 27 states and Washington D.C. through September 30, 2017, or the end of the emergency as defined.
- The table below summarizes emergency declarations and HOS waivers issued by states in response to the impacts of Hurricane Harvey and Hurricane Irma.

State Emergency Declarations and HOS Waivers <i>as of 2:00 PM EDT 09/24/2017</i>				
State	Details	Effective Dates		Status
		Start	End	
Regional (Multi-State)	Regional Emergency Declarations and FMCSR waivers issued by FMCSA. <b>For Harvey:</b> Applies to Alabama, Arkansas, Colorado, Connecticut, Delaware, Florida, Georgia, Illinois, Indiana, Kansas, Kentucky, Louisiana, Maryland, Mississippi, Missouri, New Jersey, New York, North Carolina, Ohio, Oklahoma, Pennsylvania, Tennessee, Texas, South Carolina, Virginia, Washington, D.C., and West Virginia. <b>For Irma:</b> Applies to Alabama, Florida, Georgia, Mississippi, North Carolina, South Carolina, Tennessee, Connecticut, Delaware, Maine, Maryland, Massachusetts, New Hampshire, New Jersey, New York, Pennsylvania, Rhode Island, Vermont, Virginia, West Virginia, D.C., Puerto Rico, & the U.S. Virgin Islands.	For Harvey: 08/25/17  Expanded for Harvey: 08/31/17  For Irma: 09/06/17  Expanded For Irma: 09/07/17  Extended: 09/11/17	Extension for All States: 09/30/17  Extension for Texas & Louisiana: 10/24/17	Active

	On September 22, the FMCSA extended the Regional Emergency Declaration waivers for Texas and Louisiana until October 24.	Extended: 09/22/17		
Alabama	State of Emergency/HOS waiver issued for petroleum products and petroleum-related supplies, goods, and services in the State.  International Registration Plan and International Fuel Tax Agreement requirement suspended for vehicles engaged in or travelling through Alabama for disaster relief efforts in Florida.	08/30/17  09/08/17	09/29/17  10/08/17	Active
Florida	State of Emergency/HOS waiver	09/04/17	11/03/17	Active
Georgia	State of Emergency/HOS waiver expanded to all counties in Georgia on 9/10.	For Harvey: 08/30/17 For Irma: 09/07/17 Expanded for Irma: 09/08/17 Expanded for Irma: 09/10/17	09/22/17	Expired
Kansas	Governor acknowledged state of emergency in Texas and declared that licensing rules, registration and fuel tax permits, and oversize vehicle permit fees are waived for motor carriers and persons operating motor vehicles directly participating in the relief and restoration effort.	08/30/17	09/30/17	Active
Kentucky	State of Emergency/HOS waiver issued for transporters of food, water, medicine, fuel and other commodities within the affected areas to aid in emergency response of affected areas.  State of Emergency Declaration/HOS waiver for petroleum products.	08/28/17  08/31/17	09/27/17  09/30/17	Active  Active
Louisiana	State of Emergency.	08/23/17	TBD	Active
Michigan	State of Emergency/HOS waiver issued for petroleum products through the state.	08/31/17	09/15/17	Expired



North Carolina	State of Emergency/HOS waiver issued for petroleum products.	08/31/17	09/30/17	Active
	State of Emergency/HOS waiver issued for petroleum products, and emergency relief supplies and services through the state.	09/07/17	10/06/17	Active
Puerto Rico	State of Emergency	09/04/17 Declared for Maria: 09/18/17	--	Active
South Carolina	State of Emergency/HOS waiver issued for petroleum products through the state.	09/06/17	10/06/17	Active
Tennessee	Limited State of Emergency. EO-67 suspends certain vehicle restrictions for vehicles providing emergency supplies, equipment, or mobile housing units	09/11/17	11/08/17	Active
Texas	State of Disaster declared for 61 counties in Texas.	08/23/17 Expanded: 08/30/17 Expanded: 09/01/17	TBD	Active
Virginia	State of Emergency/HOS waiver issued for petroleum products through the state.	For Harvey: 09/01/17 For Irma: 09/07/17	For Harvey: 09/15/17 For Irma: 06/30/18, or rescinded.	Active
U.S. Virgin Islands	State of Emergency	09/04/17 Declared for Maria: 09/18/17	--	Active

Sources: [U.S. Department of Transportation](#); Governor Office Websites

## FUEL WAIVERS

- The table below lists fuel-related waivers issued by the U.S. Environmental Protection Agency (U.S. EPA) and other Federal and State agencies for Hurricanes Harvey and Irma.
- On August 30, U.S. EPA issued a multi-state (13 states) waiver for requirements of low-RVP conventional gasoline and reformulated gasoline (RFG) in response to Hurricane Harvey. The next day, the waiver was expanded to include 38 states and Washington, DC. On September 7, in preparation for Hurricane Irma, the EPA extended the temporary waiver for RFG until September 26. The low-RVP waiver for all states (except Texas) expired September 15 when the normal season RVP change occurs. In addition, EPA extended the Low Volatility SIP waiver in Texas and other federally-enforceable areas through September 16. This was extended on September 13 to October 1.



State Fuel Waivers as of 2:00 PM EDT 09/24/2017					
State	Waiver	Issued By	Effective Dates		Status
			Start	End	
Multi-state waiver	<b>RVP</b> standard waived for gasoline sold in affected counties where low-RVP gasoline is required (9.0 RVP or lower). Allows sale of gasoline up to 11.5 psi RVP in all states located in PADD 1, PADD 2, and PADD 3. <b>RFG</b> standard is also waived in the designated regions. Also waived are provisions prohibiting the blending of RFG blendstock with conventional gasolines or blendstocks.	U.S. EPA	For Harvey: 08/30/17 Expanded for Harvey: 08/31/17 Extended for Irma: 09/07/17	For RVP: 09/15/17  For RFG: 09/26/17	Expired  Active
TX	<b>RFG</b> requirement waived in Houston-Galveston-Brazoria areas. Waiver expanded to four-county Dallas-Fort Worth RFG area 8/26. Allows the sale or distribution of conventional gasoline. This was extended on 09/13 to October 1.	U.S. EPA	08/25/17  Expanded: 08/26/17	09/15/17  Extended: 10/01	Active
TX	<b>7.8 psi RVP</b> standard waived for gasoline sold in 20 counties where low-RVP gasoline is required and are also under the Governor’s Disaster Declaration. Waiver expanded to 98 counties required to use low-RVP fuel 8/26. Allows sale of gasoline up to 9.0 psi RVP. This was extended on 09/13 to October 1.	U.S. EPA	08/25/17	09/16/17  Extended: 10/01	Expired
TX	Limited waiver of highway diesel fuel red dye requirements. Allows sale, distribution, and use of red dye NRLM diesel fuel for use in highway diesel vehicles, but diesel fuel must meet 15 ppm standard.	U.S. EPA	08/29/17	09/15/17	Expired
FL	Limited waiver of highway diesel fuel red dye requirements. Allows sale, distribution, and use of red dye NRLM diesel fuel for use in highway diesel vehicles, but diesel fuel must meet 15 ppm standard. On 9/22, EPA extended the waiver to October 6.  Waiver of tax penalties when dyed diesel fuel is sold and used for highway use in Florida.	U.S. EPA	09/06/17 Extended: 09/22	09/22/17 Extended: 10/06	Active
		U.S. IRS	09/06/17	09/22/17	Expired
LA	RVP requirements of 7.8 psi and 9.0 psi waived in applicable areas. Permits the sale or distribution of winter gasoline with an 11.5 psi RVP.	State of Louisiana	08/29/17  Expanded: 08/30/17	09/15/17	Expired

State Fuel Waivers as of 2:00 PM EDT 09/24/2017					
State	Waiver	Issued By	Effective Dates		Status
			Start	End	
MI	<b>RVP</b> regulations waived. Permits the transportation and sale of motor fuels 9.0 psi RVP in Wayne, Oakland, Macomb, St. Clair, Livingston, Washtenaw, Monroe, and Lenawee counties, and up to 11.5 psi RVP elsewhere in Michigan.	State of Michigan	08/31/17	09/15/17	Expired
MS	<b>RVP</b> standards of 9.0 psi waived. Permits the sale or distribution of winter gasoline with an 11.5 psi RVP.	State of Mississippi	08/30/17	09/15/17	Expired
SC	<b>RVP</b> standards of 9.0 psi waived. Permits the sale or distribution of winter gasoline with an 11.5 psi RVP. Allows the comingling of <b>RFG</b> with conventional gasoline. Waives butane blending and T V/L = 20 requirements.	State of South Carolina	09/07/17	10/31/17	Active
VA	Waived the <b>RVP</b> limit for gasoline ethanol blends prescribed by regulations. Extended waiver to apply through duration of Hurricane Irma impact on 9/8.	State of Virginia	09/01/17 Extended: 09/08/17	Until further notice.	Active

Sources: U.S. Environmental Protection Agency; State Governments

**OTHER WAIVERS**

- **Department of Homeland Security**
  - On September 8, the Acting Secretary of Homeland Security [waived Jones Act](#) requirements for shipping refined petroleum products –including gasoline, diesel and jet fuel— to Florida for a 7-day period. The waiver of the Jones Act will allow foreign flag vessels to bring in fuel from New York, Pennsylvania, Texas, and Louisiana to South Carolina, Georgia, Florida and Puerto Rico to help with fuel shortages amid the threat from Hurricane Irma. On September 11, the Jones Act waiver was expanded to include shipments from all states in PADD 1B and PADD 3 to all states in PADD 1C. The waiver applies to covered merchandise laded on board a vessel through and including September 22, 2017. As of September 23, the Jones Act waiver expired.
  
- **Federal Energy Regulatory Commission (FERC)**
  - On September 5, the Federal Energy Regulatory Commission (FERC) approved an emergency waiver tariff, effective immediately, allowing the pipeline system to accept 11.5 RVP gasoline (A3) to fill nominations for 7.8 RVP gasoline (A1) and 9.0 RVP gasoline (A2); and to ship conventional gasoline in lieu of reformulated gasoline. Colonial’s tariffs and tariff practices would not normally permit it to accept product that does not conform to the specifications of the product that was nominated.



- **Department of Transportation (DOT)**

- On September 8, DOT's Pipeline and Hazardous Materials Safety Administration (PHMSA) issued an Emergency Waiver Order under 49 U.S.C. 5103 and Stafford Act declarations made for the U.S. Virgin Islands, Puerto Rico, Florida, and South Carolina, to persons conducting operations under the direction of the Environmental Protection Agency and the U.S. Coast Guard that support appropriate actions to prepare for, respond to, and recover from a threat to public health, welfare, or the environment caused by actual or potential oil and hazardous materials incidents resulting from Hurricane Irma in Puerto Rico, U.S. Virgin Islands, Florida, and South Carolina. On September 10, 2017, based on a Stafford act emergency declaration, PHMSA amended this order to include Georgia.
- On September 1, PHMSA issued an Emergency Stay of Enforcement for operators affected by Hurricane Harvey. The declaration states that PHMSA does not intend to take any enforcement action relating to their noncompliance with certain operator qualification requirements, or pre-employment and random drug testing requirements, arising from the use of personnel for pipeline activities related to response and recovery. On September 7, PHMSA issued an enforcement stay for the waiver to include states affected by Hurricane Irma. The states included in this extension are Florida, Georgia, North Carolina, South Carolina, and Puerto Rico.
- On September 20, PHMSA issued an Emergency Stay of Enforcement for pipeline operators that may be affected by Maria. PHMSA will not take enforcement action relating to operator noncompliance with certain operator qualification requirements, or pre-employment and random drug testing requirements, arising from the use of personnel for pipeline activities related to response and recovery. The waiver took effect on September 20 and will expire on November 4, unless PHMSA determines it needs to be extended.

- **Environmental Protection Agency (EPA)**

- On September 11, the EPA issued a blanket waiver for all power plant facilities in Florida, allowing them to operate without meeting all pollution controls in order to maintain the supply of electricity to customers and critical facilities across the state as a result of Hurricane Irma. The 'no action assurance' is temporary and will terminate on September 26, 2017; it was requested by the Florida Department of Environmental Protection and determined by EPA to be in the public's interest. The facilities must continue to comply with all other federal, state and local environmental law and are still required to monitor and report levels of regulated contaminants released.
- On September 22, the EPA extended the enforcement discretion for fuel storage facilities and tanker trucks in Texas at least until September 29 as recovery efforts from Hurricane Harvey continue. It said a larger number of tanker trucks were needed to deliver fuel and that it would not pursue enforcement actions against trucks for certain Clean Air Act violations.





- On September 22, the EPA extended enforcement discretion first issued on September 15 for certain air pollutants from gasoline storage tanks during so-called roof landings, as well as for bulk fuel terminals that are not equipped to capture or recover certain air pollutants. The discretion will terminate on September 29.
- On September 22, the EPA announced that it will exercise enforcement discretion for mobile power generators being imported into the United States that will be used as emergency sources of power in Puerto Rico as a result of Hurricane Maria. EPA will not pursue enforcement actions for certain violations of the Clean Air Act for mobile power generators being imported for use in Puerto Rico that have not been certified to meet U.S. pollution control standards. This covers mobile power generators that are imported for use in Puerto Rico until January 31, 2018.
- On September 23, the EPA issued an order to FEMA and the DOD authorizing the installation and operation of temporary water treatment units in the U.S. Virgin Islands where a loss of electrical power due to hurricanes Irma and Maria has left public water systems inoperable. This order is effective through October 8, but is eligible to be extended.

