



Hurricanes Maria, Irma, and Harvey

September 22 Afternoon Event Summary (Report #43)

REPORT TIME & DATE:	4:00 PM EDT Friday, September 22, 2017
INCIDENT START DATE:	Friday, August 25, 2017
PRIMARY LOCATION(S):	TX, LA, FL, GA, NC, SC, Puerto Rico, & USVI
REPORT DISTRIBUTION:	Public

Note: DOE will continue to phase out information related to Hurricanes Irma & Harvey as appropriate and may begin to provide a separate report in needed.

EXECUTIVE SUMMARY

Hurricane Maria made landfall on the southern coast of Puerto Rico around 6:15 AM EDT on Wednesday, September 20, after passing approximately 15 miles south-southwest of St. Croix. As of Friday afternoon, Maria continues to move northwest, through the southeastern Bahamas, as a category 3 storm.

DOE is supporting response efforts for Hurricane Maria and continues to support restoration efforts from both Hurricane Harvey and Hurricane Irma. ESF #12 responders are deployed to St. Thomas and St. Croix in support of FEMA Incident Management Assistance Teams and responders are prepared to deploy to Puerto Rico as soon as conditions permit. ESF #12 responders are also deployed to the National Response Coordination Center and the Florida State Emergency Operations Center.

Electricity Sector Summary (as of 2:30 PM EDT Friday)

- Florida: 13,337 customer outages (<1% of total state customers)
 - Most utilities estimated that over 95% of customers will be restored by September 22
- Puerto Rico: Nearly all 1.57 million electricity customers in Puerto Rico continue to be without power following the storm and all generation assets are believed to be offline
- USVI: The majority of the 25,000 customers on St. Croix were reported to be without power from Hurricane Maria. St. Thomas and St. John previously experienced extensive power outages from Hurricane Irma, with restoration only occurring to critical facilities
- Damage assessment and some restoration efforts in Puerto Rico and the USVI have begun. DOE is working closely with the local governments, FEMA, and industry to facilitate mutual aid

Oil and Natural Gas Sector Summary (as of 2:30 PM EDT Friday)

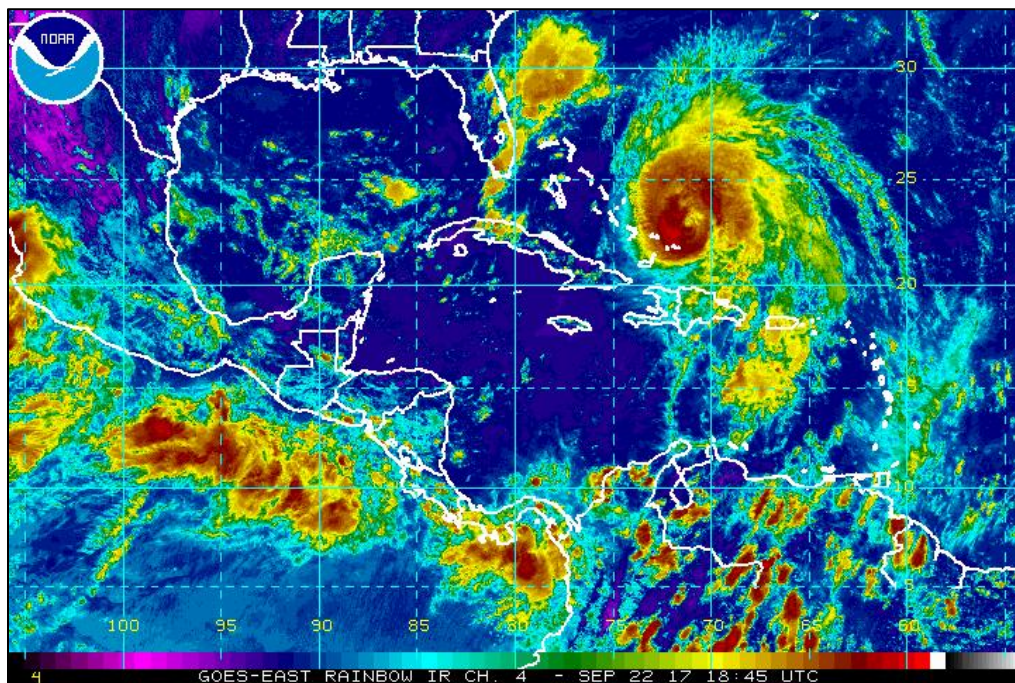
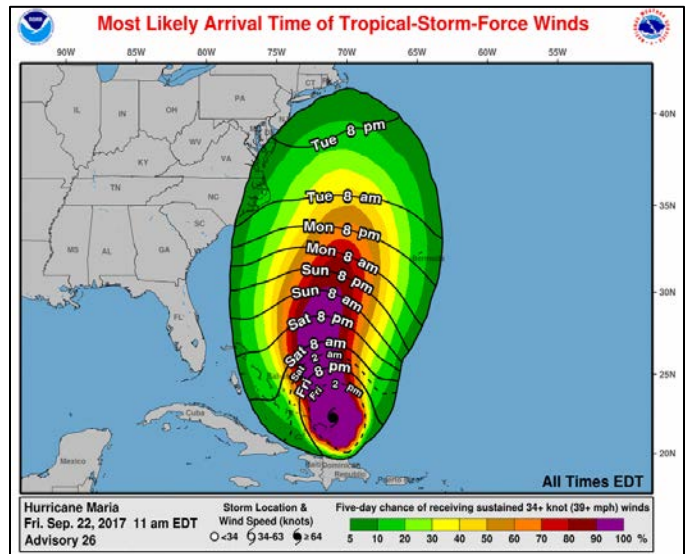
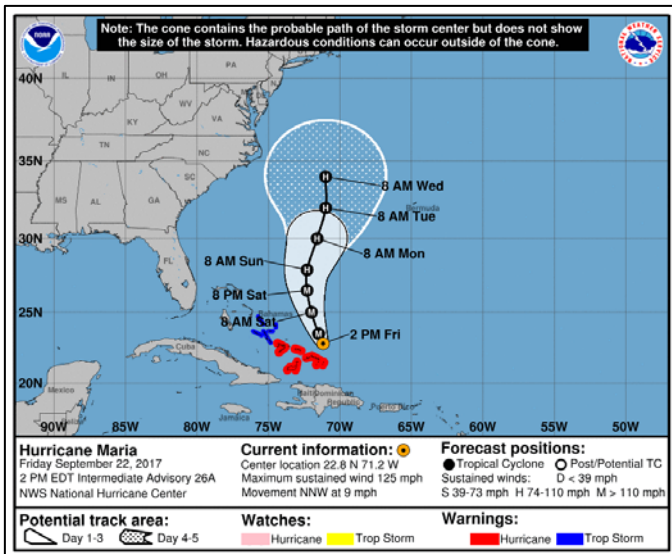
- Florida is working closely with gasoline truckers & shippers to ensure timely delivery of product to retail stations and reports from state officials as well as data from GasBuddy.com indicate that the situation continues to improving
- No issues have been reported with any key pipelines transporting petroleum products throughout the affected region

HURRICANE MARIA OVERVIEW

As of 2:00 PM EDT, Hurricane Maria was 80 miles north of Grand Turk Island, moving north-northwest at 9 MPH with maximum sustained winds of 125 MPH (category 3). Hurricane-force winds extend outward up to 70 miles and tropical storm-force winds extend outward up to 160 miles.

Maria continues to produce rainfall across Puerto Rico, with an additional 3 to 6 inches expected through Saturday. Several rivers in Puerto Rico are at or near flood stage and a flood warning is in effect.

Maria is expected to turn to the north on Saturday. On the forecast track, Maria's core will move away from the Turks and Caicos Islands today, and pass northeast and east of the Bahamas through Sunday.



Hurricane Maria

ELECTRICITY SECTOR

IMPACTS TO PUERTO RICO AND U.S. VIRGIN ISLANDS

ELECTRICITY OUTAGES AS OF 2:00 PM EDT 09/22/2017			
Impacted State	Current Confirmed Customer Outages	Percent of Confirmed State Customers without Power	24-hr Peak Customer Outages
Puerto Rico	1,569,796	100%	1,569,796
Total	1,569,796	--	--

- President Trump approved a major disaster declaration for Puerto Rico and the U.S. Virgin Islands (USVI) due to impacts from Hurricane Maria.

Puerto Rico

- The Puerto Rico Electric Power Authority (PREPA) is reporting near 100% of total customers in Puerto Rico remain without power, with the exception of facilities running on generators.
- PREPA’s Executive Director, Ricardo Ramos, issued a statement Thursday night announcing that PREPA will not resume regular operations until Monday, September 25, 2017 in an effort to avoid jeopardizing the safety of its employees. Only employees with functions within PREPA’s emergency plans and other select individuals should report to work until then.
- DOE is coordinating with PREPA, FEMA, and industry to transport crews to the island to support further damage assessments.
- Significant flooding and debris have limited the ability to safely conduct damage assessments.
- Puerto Rico Gov. Ricardo Rosselló established a nightly curfew from 6 PM to 6 AM that took effect Wednesday evening and will end Saturday morning. A number of exceptions to this curfew were announced, including for state and Federal personnel dedicated to recovery activities.

U.S. Virgin Islands

- As of the afternoon of Friday, September 22, the majority of the 25,000 customers on St. Croix were reported to be without power. St. Thomas and St. John previously experienced extensive power outages from Hurricane Irma, with restoration focusing on critical facilities.
- St. Croix is working to re-energize key switchgear to provide power to critical facilities, including the water processing plant
- Key water processing facilities on St. Thomas and St. Johns are energized and operational
- USVI WAPA is expected to continue damage assessments in impacted areas today.
- DOE is working closely with industry and FEMA to facilitate mutual aid for the U.S. Virgin Islands.



OIL & GAS SECTOR

PORTS

- The U.S. Coast Guard has set the following conditions for ports and waterways in Sector San Juan as a result of Hurricane Maria. Listed in the table are select ports that import petroleum products.

Status of Caribbean Ports as of 2:00 PM EDT 09/22/2017			
Port	Average Imports (b/d)*	Status	Date Stamp
Puerto Rico			
San Juan	57,000	Port Condition Zulu. Closed. Sea Tow International doing assessment of ports.	09/22/17
Ponce	30,000	Port Condition Zulu. Closed.	09/19/17
Guayanilla	4,000	Port Condition Zulu. Closed.	09/19/17
Yabucoa	Not. Avail.	Port Condition Zulu. Closed.	09/19/17
U.S. Virgin Islands			
Christiansted, St. Croix	18,000	Port Condition Zulu. Closed.	09/18/17
Limetree Bay, St. Croix	Not. Avail.	Open. Ship draft must be less than 45 feet. Daytime operations only.	09/22/17
Cruz Bay, St. John	--**	Port Condition Zulu. Closed.	09/18/17
Charlotte Amalie, St. Thomas	--**	Ports of Homeport Pier, Crowley, Tropical Shipping Terminal, Krum Bay, and East and West Greggerie Channels are open for daylight operations only.	09/22/17

*All petroleum products, excluding asphalt.

**No direct foreign imports. These ports receive barge shipments from larger ports in the USVI and Puerto Rico.

Source: Receipt data EIA Company Level Imports (Jan-May 2017)



Hurricane Irma

ELECTRICITY SECTOR

IMPACTS TO CONTINENTAL UNITED STATES

ELECTRICITY OUTAGES AS OF 7:30 AM EDT 09/22/2017			
Impacted State	Current Confirmed Customer Outages	Percent of Confirmed State Customers without Power	24-hr Peak Customer Outages
Florida	13,337	<1%	29,315
Total	13,337	--	*

**There is no sum of the Peak Customer Outage column because peaks for individual utilities occur at different times; a total would not reflect peak outages.*

Florida

- As of 2:30 PM EDT, September 22, Florida has 13,337 customer outages (<1% of total state customers).
 - Keys Energy Service has 2,911 customer outages.
 - Florida Power and Light (FPL) has 1,622 customer outages.
 - Florida Keys Electric Cooperative has 765 customer outages.
- FPL has restored power to nearly all customers impacted by the storm.
 - As of 2:30 PM EDT, FPL is reporting 580 customer outages in Collier County.
 - As of 2:30 PM EDT, FPL is reporting 370 customer outages in Lee County.
 - More than 99% of high-priority critical infrastructure facilities have been restored. More than 95% of schools and 99% of nursing homes, classified as priority, have been restored.
- Florida Keys Electric Cooperative expects to close its storm restoration base camps on Saturday.
- The Florida Keys' main transmission line, known as the tieline, is energized.



OIL & GAS SECTOR

PORTS

- The U.S. Coast Guard has set the following conditions for ports and waterways in the U.S. Southeast as a result of Hurricane Irma. Listed in the table are ports that receive petroleum products. Note, Caribbean ports are included in the previous section for Hurricane Maria.

Status of Southeast and Caribbean Ports as of 2:00 PM EDT 09/22/2017			
Port	Average Receipts (b/d)*	Status	Date Stamp
Sector Miami			
Port Everglades	298,000**	Open without restrictions.	09/12/17
Miami	1,500	Open without restrictions.	09/13/17
Port of Palm Beach	500	Open without restrictions.	09/13/17
Sector Key West			
All Ports	--	Open with restrictions. Temporary regulated navigation area and safety zone established. Speed restrictions in place, effective through 10/01.	09/16/17
Sector St. Petersburg			
Tampa	273,700	Open without restrictions.	09/14/17
Port Manatee	700	Open without restrictions.	09/14/17
Sector Jacksonville			
Port of Jacksonville	69,800	Port Condition IV. Open without restrictions.	09/13/17
Port Canaveral	32,200	Port Condition IV. Open without restrictions.	09/14/17
Sector Mobile			
Mobile (AL)	168,000	Open. Port Status Normal.	09/11/17
Pascagoula (MS)	(outbound)	Open. Port Status Normal.	09/11/17
Pensacola (FL)	11,400	Open. Port Status Normal.	09/11/17
Panama City (FL)	8,500	Open. Port Status Normal.	09/12/17
Gulf Intercostal Waterway	--	Open. Port Status Normal.	09/13/17

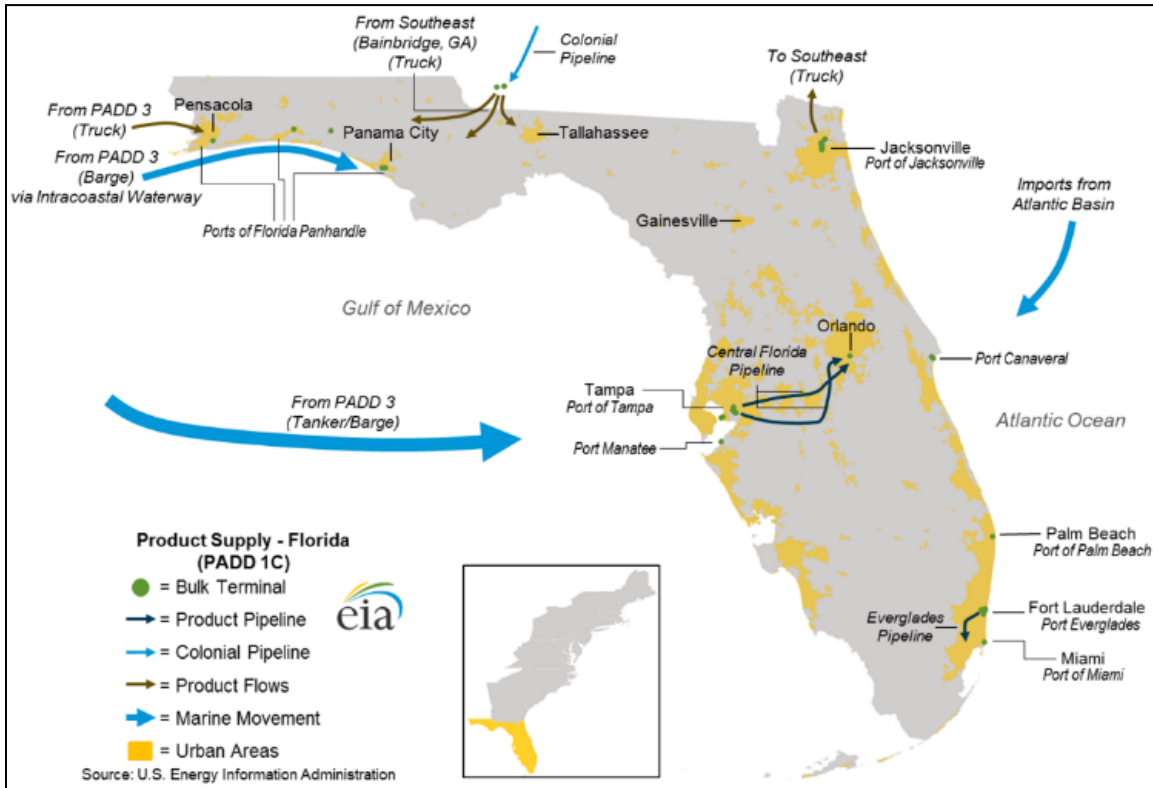
*Average imports and domestic receipts of transportation fuels (gasoline, distillate, and jet fuel), unless otherwise noted.

**Includes bunker fuel and fuel oil and distillate for power generation.

Source: Receipt data from [U.S. EIA](#), USACE data (2013), EIA Company Level Imports



- Below is a map of key petroleum ports and petroleum product pipelines in Florida.



Source: EIA: <https://www.eia.gov/analysis/transportationfuels/padd1n3/>

Hurricane Harvey

OIL & GAS SECTOR

PETROLEUM REFINERIES

- As of 2:00 PM EDT, September 22, three refineries in the Gulf Coast region were shut down, according to public reports. These refineries have a combined refining capacity of 372,000 b/d, equal to 3.8% of total Gulf Coast (PADD 3) refining capacity and 2.0% of total U.S. refining capacity. No refineries began restarting operations since the last report.
- One refinery is in the process of restarting after being shut down. This process may take several days or weeks to start producing product, depending whether any damage is found during restart. Production should be assumed to be minimal until restart is completed. This refinery has a capacity of 296,470 b/d, equal to 3.1% of total Gulf Coast (PADD 3) refining capacity and 1.6% of total U.S. refining capacity. No restarting refineries began operating at reduced rates status since the last report.
- Nine refineries in the Gulf Coast region were operating at reduced rates, according to public reports. These refineries have a combined total capacity of 3,037,729 b/d, equal to 31.3% of total Gulf Coast (PADD 3) refining capacity and 16.4% of total U.S. refining capacity. (NOTE: Actual crude throughput (production) reductions are lower than the total combined capacity).



PORTS

- The U.S. Coast Guard has set the following conditions for ports and waterways in the Gulf Coast

Status of Texas and Louisiana Gulf Coast Ports as of 2:00 PM EDT 09/22/2017			
Port	Crude Imports Jan-May 2017 (b/d)	Status	Date Stamp
Sector Corpus Christi			
Brownsville	--	Open.	08/31/17
Corpus Christi	245,000	Port Condition Recovery. Open with restrictions. Allowing vessels up to 43' draft to transit during daytime hours only.	09/11/17
Sector Houston and Galveston			
Freeport	133,000	Port Condition Recovery. Open. 24/7. 38' max draft.	09/05/17
Galveston	114,000	Port Condition Recovery. Galveston Bay Entrance Channel, Outer Bar Channel, Inner Bar Channel, Bolivar Roads Anchorages, Bolivar Roads Channel, and Galveston Harbor open 24/7.	09/05/17
Houston	646,000	Port Condition Recovery. Open with restrictions. Intracoastal Waterway open 24/7. Houston Ship Channel open 24/7 below Sidney Sherman bridge with draft restrictions: <ul style="list-style-type: none"> Entrance Channel to Houston Cement West – 42-foot to 40-foot max draft. Houston Cement West to Sidney Sherman Bridge – 36-foot max draft 	09/13/17
Texas City	134,000	Port Condition Recovery. Open. 24/7 with no restrictions.	09/05/17
Sector Port Arthur and Lake Charles			
Sabine Pass	--	Port Condition Recovery. Open with restrictions.	09/18/17
Port Arthur	687,000	Port Condition Recovery. Open with restrictions.	09/18/17
Beaumont/	33,000	Port Condition Recovery. Open with restrictions. Max draft of 31 feet on Neches River from ExxonMobil to Port of Beaumont due to shoaling.	09/19/17
Port Neches	--	Port Condition Recovery. Open with restrictions. Open to full 40 foot charted depth in Neches River Waterway from "SB" Buoy to ExxonMobil dock 4.	09/18/17
Nederland	--	Port Condition Recovery. Open with restrictions. Open to full 40 foot charted depth in Neches River Waterway from "SB" Buoy to ExxonMobil dock 4.	09/18/17
Lake Charles	218,000	Port Condition Recovery. Open with restrictions. 38 feet draft restrictions of the Calcasieu Ship Channel.	09/18/17

Source: U.S. Coast Guard



Emergency Declarations & Waivers

EMERGENCY DECLARATIONS

- Twelve states, including Puerto Rico and USVI, declared state emergencies due to Irma & Harvey. These declarations automatically waived select Federal Motor Carrier Safety Regulations (FMCSRs), including hours-of-service (HOS) regulations, for motor carriers hauling resources to aid in restoration. The declarations exempted FCMSR in every state along the motor carrier’s route as long as the final destination was with the declared disaster areas. Some HOS waivers applied specifically to the movement of petroleum products in or through the state. On September 18, USVI and Puerto Rico declared a state of emergency for Hurricane Maria and on September 20, President Trump approved a major disaster declaration.
- In addition, the Federal Motor Carrier Safety Administration (FMCSA) issued a Regional Emergency Declaration for Hurricane Harvey exempting FMCSRs in the States of Texas and Louisiana. On August 31, the FMCSA expanded the Regional Emergency Declaration to additional states and Washington, DC. On September 6, the Regional Emergency Declaration was extended for states affected by Hurricane Irma. On September 7, the Irma Regional Declaration was expanded again to include states in the Mid-Atlantic and Northeast. On September 11, an Amended Regional Declaration of Emergency was released that extended the exemption of FMCSRs in all 27 states and Washington D.C. through September 30, 2017, or the end of the emergency as defined.
- The table below summarizes emergency declarations and HOS waivers issued by states in response to the impacts of Hurricane Harvey and Hurricane Irma.

State Emergency Declarations and HOS Waivers <i>as of 2:00 PM EDT 09/22/2017</i>				
State	Details	Effective Dates		Status
		Start	End	
Regional (Multi-State)	Regional Emergency Declarations and FMCSR waivers issued by FMCSA. For Harvey: Applies to Alabama, Arkansas, Colorado, Connecticut, Delaware, Florida, Georgia, Illinois, Indiana, Kansas, Kentucky, Louisiana, Maryland, Mississippi, Missouri, New Jersey, New York, North Carolina, Ohio, Oklahoma, Pennsylvania, Tennessee, Texas, South Carolina, Virginia, Washington, D.C., and West Virginia. For Irma: Applies to Alabama, Florida, Georgia, Mississippi, North Carolina, South Carolina, Tennessee, Connecticut, Delaware, Maine, Maryland, Massachusetts, New Hampshire, New Jersey, New York, Pennsylvania, Rhode Island, Vermont, Virginia, West Virginia, D.C., Puerto Rico, & the U.S. Virgin Islands.	For Harvey: 08/25/17 Expanded for Harvey: 08/31/17 For Irma: 09/06/17 Expanded For Irma: 09/07/17 Extended: 09/11/17	Extension for All States: 09/30/17	Active



Alabama	State of Emergency/HOS waiver issued for petroleum products and petroleum-related supplies, goods, and services in the State. International Registration Plan and International Fuel Tax Agreement requirement suspended for vehicles engaged in or travelling through Alabama for disaster relief efforts in Florida.	08/30/17 09/08/17	09/29/17 10/08/17	Active
Florida	State of Emergency/HOS waiver	09/04/17	11/03/17	Active
Georgia	State of Emergency/HOS waiver expanded to all counties in Georgia on 9/10.	For Harvey: 08/30/17 For Irma: 09/07/17 Expanded for Irma: 09/08/17 Expanded for Irma: 09/10/17	09/22/17	Active
Kansas	Governor acknowledged state of emergency in Texas and declared that licensing rules, registration and fuel tax permits, and oversize vehicle permit fees are waived for motor carriers and persons operating motor vehicles directly participating in the relief and restoration effort.	08/30/17	09/30/17	Active
Kentucky	State of Emergency/HOS waiver issued for transporters of food, water, medicine, fuel and other commodities within the affected areas to aid in emergency response of affected areas. State of Emergency Declaration/HOS waiver for petroleum products.	08/28/17 08/31/17	09/27/17 09/30/17	Active Active
Louisiana	State of Emergency.	08/23/17	TBD	Active
Michigan	State of Emergency/HOS waiver issued for petroleum products through the state.	08/31/17	09/15/17	Expired



North Carolina	State of Emergency/HOS waiver issued for petroleum products.	08/31/17	09/30/17	Active
	State of Emergency/HOS waiver issued for petroleum products, and emergency relief supplies and services through the state.	09/07/17	10/06/17	Active
Puerto Rico	State of Emergency	09/04/17 Declared for Maria: 09/18/17	--	Active
South Carolina	State of Emergency/HOS waiver issued for petroleum products through the state.	09/06/17	10/06/17	Active
Tennessee	Limited State of Emergency. EO-67 suspends certain vehicle restrictions for vehicles providing emergency supplies, equipment, or mobile housing units	09/11/17	11/08/17	Active
Texas	State of Disaster declared for 61 counties in Texas.	08/23/17 Expanded: 08/30/17 Expanded: 09/01/17	TBD	Active
Virginia	State of Emergency/HOS waiver issued for petroleum products through the state.	For Harvey: 09/01/17 For Irma: 09/07/17	For Harvey: 09/15/17 For Irma: 06/30/18, or rescinded.	Active
U.S. Virgin Islands	State of Emergency	09/04/17 Declared for Maria: 09/18/17	--	Active

Sources: [U.S. Department of Transportation](#); Governor Office Websites

FUEL WAIVERS

- The table below lists fuel-related waivers issued by the U.S. Environmental Protection Agency (U.S. EPA) and other Federal and State agencies for Hurricanes Harvey and Irma.
- On August 30, U.S. EPA issued a multi-state (13 states) waiver for requirements of low-RVP conventional gasoline and reformulated gasoline (RFG) in response to Hurricane Harvey. The next day, the waiver was expanded to include 38 states and Washington, DC. On September 7, in preparation for Hurricane Irma, the EPA extended the temporary waiver for RFG until September 26. The low-RVP waiver for all states (except Texas) expired September 15 when the normal season RVP change occurs. In addition, EPA extended the Low Volatility SIP waiver in Texas and other federally-enforceable areas through September 16. This was extended on September 13 to October 1.



State Fuel Waivers as of 2:00 PM EDT 09/22/2017					
State	Waiver	Issued By	Effective Dates		Status
			Start	End	
Multi-state waiver	RVP standard waived for gasoline sold in affected counties where low-RVP gasoline is required (9.0 RVP or lower). Allows sale of gasoline up to 11.5 psi RVP in all states located in PADD 1, PADD 2, and PADD 3. RFG standard is also waived in the designated regions. Also waived are provisions prohibiting the blending of RFG blendstock with conventional gasolines or blendstocks.	U.S. EPA	For Harvey: 08/30/17 Expanded for Harvey: 08/31/17 Extended for Irma: 09/07/17	For RVP: 09/15/17 For RFG: 09/26/17	Expired Active
TX	RFG requirement waived in Houston-Galveston-Brazoria areas. Waiver expanded to four-county Dallas-Fort Worth RFG area 8/26. Allows the sale or distribution of conventional gasoline. This was extended on 09/13 to October 1.	U.S. EPA	08/25/17 Expanded: 08/26/17	09/15/17 Extended: 10/01	Active
TX	7.8 psi RVP standard waived for gasoline sold in 20 counties where low-RVP gasoline is required and are also under the Governor’s Disaster Declaration. Waiver expanded to 98 counties required to use low-RVP fuel 8/26. Allows sale of gasoline up to 9.0 psi RVP. This was extended on 09/13 to October 1.	U.S. EPA	08/25/17	09/16/17 Extended: 10/01	Expired
TX	Limited waiver of highway diesel fuel red dye requirements. Allows sale, distribution, and use of red dye NRLM diesel fuel for use in highway diesel vehicles, but diesel fuel must meet 15 ppm standard.	U.S. EPA	08/29/17	09/15/17	Expired
FL	Limited waiver of highway diesel fuel red dye requirements. Allows sale, distribution, and use of red dye NRLM diesel fuel for use in highway diesel vehicles, but diesel fuel must meet 15 ppm standard. On 9/22, EPA extended the waiver to October 6. Waiver of tax penalties when dyed diesel fuel is sold and used for highway use in Florida.	U.S. EPA	09/06/17 Extended: 09/22	09/22/17 Extended: 10/06	Active
		U.S. IRS	09/06/17	09/22/17	Active
LA	RVP requirements of 7.8 psi and 9.0 psi waived in applicable areas. Permits the sale or distribution of winter gasoline with an 11.5 psi RVP.	State of Louisiana	08/29/17 Expanded: 08/30/17	09/15/17	Expired

MI	RVP regulations waived. Permits the transportation and sale of motor fuels 9.0 psi RVP in Wayne, Oakland, Macomb, St. Clair, Livingston, Washtenaw, Monroe, and Lenawee counties, and up to 11.5 psi RVP elsewhere in Michigan.	State of Michigan	08/31/17	09/15/17	Expired
MS	RVP standards of 9.0 psi waived. Permits the sale or distribution of winter gasoline with an 11.5 psi RVP.	State of Mississippi	08/30/17	09/15/17	Expired
SC	RVP standards of 9.0 psi waived. Permits the sale or distribution of winter gasoline with an 11.5 psi RVP. Allows the comingling of RFG with conventional gasoline. Waives butane blending and T V/L = 20 requirements.	State of South Carolina	09/07/17	10/31/17	Active
VA	Waived the RVP limit for gasoline ethanol blends prescribed by regulations. Extended waiver to apply through duration of Hurricane Irma impact on 9/8.	State of Virginia	09/01/17 Extended: 09/08/17	Until further notice.	Active

Sources: U.S. Environmental Protection Agency; State Governments

OTHER WAIVERS

- **Department of Homeland Security**
 - On September 8, the Acting Secretary of Homeland Security [waived Jones Act](#) requirements for shipping refined petroleum products –including gasoline, diesel and jet fuel— to Florida for a 7-day period. The waiver of the Jones Act will allow foreign flag vessels to bring in fuel from New York, Pennsylvania, Texas, and Louisiana to South Carolina, Georgia, Florida and Puerto Rico to help with fuel shortages amid the threat from Hurricane Irma. On September 11, the Jones Act waiver was expanded to include shipments from all states in PADD 1B and PADD 3 to all states in PADD 1C. The waiver applies to covered merchandise laded on board a vessel through and including September 22, 2017.
- **Federal Energy Regulatory Commission (FERC)**
 - On September 5, the Federal Energy Regulatory Commission (FERC) approved an emergency waiver tariff, effective immediately, allowing the pipeline system to accept 11.5 RVP gasoline (A3) to fill nominations for 7.8 RVP gasoline (A1) and 9.0 RVP gasoline (A2); and to ship conventional gasoline in lieu of reformulated gasoline. Colonial’s tariffs and tariff practices would not normally permit it to accept product that does not conform to the specifications of the product that was nominated.



- **Department of Transportation (DOT)**
 - On September 8, DOT's Pipeline and Hazardous Materials Safety Administration (PHMSA) issued an Emergency Waiver Order under 49 U.S.C. 5103 and Stafford Act declarations made for the U.S. Virgin Islands, Puerto Rico, Florida, and South Carolina, to persons conducting operations under the direction of the Environmental Protection Agency and the U.S. Coast Guard that support appropriate actions to prepare for, respond to, and recover from a threat to public health, welfare, or the environment caused by actual or potential oil and hazardous materials incidents resulting from Hurricane Irma in Puerto Rico, U.S. Virgin Islands, Florida, and South Carolina. On September 10, 2017, based on a Stafford act emergency declaration, PHMSA amended this order to include Georgia.
 - On September 1, PHMSA issued an Emergency Stay of Enforcement for operators affected by Hurricane Harvey. The declaration states that PHMSA does not intend to take any enforcement action relating to their noncompliance with certain operator qualification requirements, or pre-employment and random drug testing requirements, arising from the use of personnel for pipeline activities related to response and recovery. On September 7, PHMSA issued an enforcement stay for the waiver to include states affected by Hurricane Irma. The states included in this extension are Florida, Georgia, North Carolina, South Carolina, and Puerto Rico.
 - On September 20, PHMSA issued an Emergency Stay of Enforcement for pipeline operators that may be affected by Maria. PHMSA will not take enforcement action relating to operator noncompliance with certain operator qualification requirements, or pre-employment and random drug testing requirements, arising from the use of personnel for pipeline activities related to response and recovery. The waiver took effect on September 20 and will expire on November 4, unless PHMSA determines it needs to be extended.
- **Environmental Protection Agency (EPA)**
 - On September 11, the **EPA** issued a blanket waiver for all power plant facilities in Florida, allowing them to operate without meeting all pollution controls in order to maintain the supply of electricity to customers and critical facilities across the state as a result of Hurricane Irma. The 'no action assurance' is temporary and will terminate on September 26, 2017; it was requested by the Florida Department of Environmental Protection and determined by EPA to be in the public's interest. The facilities must continue to comply with all other federal, state and local environmental law and are still required to monitor and report levels of regulated contaminants released.