



# Hurricane Irma & Hurricane Harvey

## Event Summary (Report #28)

<b>REPORT TIME &amp; DATE:</b>	4:00 PM EDT   Tuesday, September 12, 2017
<b>INCIDENT START DATE:</b>	Friday, August 25, 2017
<b>PRIMARY LOCATION(S):</b>	Irma: FL, GA, NC, SC, Puerto Rico, & USVI // Harvey: TX & LA
<b>REPORT DISTRIBUTION:</b>	Public

### EXECUTIVE SUMMARY

The remnants of Irma was 50 miles continue to move north-northwest across Alabama, with maximum sustained winds of 10 MPH. The remnant rain bands are expected to produce additional rain accumulations of 1 to 2 inches across portions of North Carolina, northern Mississippi, eastern Arkansas, as well as western Tennessee and Kentucky.

DOE continues to monitoring impacts from the storm and ESF #12 responders are supporting FEMA Incident Management Assistance Teams (IMAT) in Puerto Rico, St. Thomas, and St. Croix. ESF #12 responders are also deployed to the FEMA Region II and IV Coordination Centers, the Alabama State Operations Center, Florida State Operations Center, and the Georgia State Operations Center.

### Irma Electricity Sector Summary (as of 2:30 PM EDT Tuesday)

- Florida: 4,788,277 customer outages (48% of total state customers)
- Georgia: 932,587 customer outages (22% of total state customers)
- South Carolina: 140,759 customer outages (6% of total state customers)
- North Carolina: 56,834 customer outages (1% of total state customers)
- Alabama: 20,050 customers outages (1% of total state customers)
- Puerto Rico: 303,998 customers (19% of total customers)
- The U.S. Virgin Islands Water and Power Authority (WAPA) reported several feeders on St. Thomas are re-energized. There are currently two generators (#14 and #25) online with a maximum capacity of 39 MW. An 800 kW generator has arrived on St. Thomas September 12.

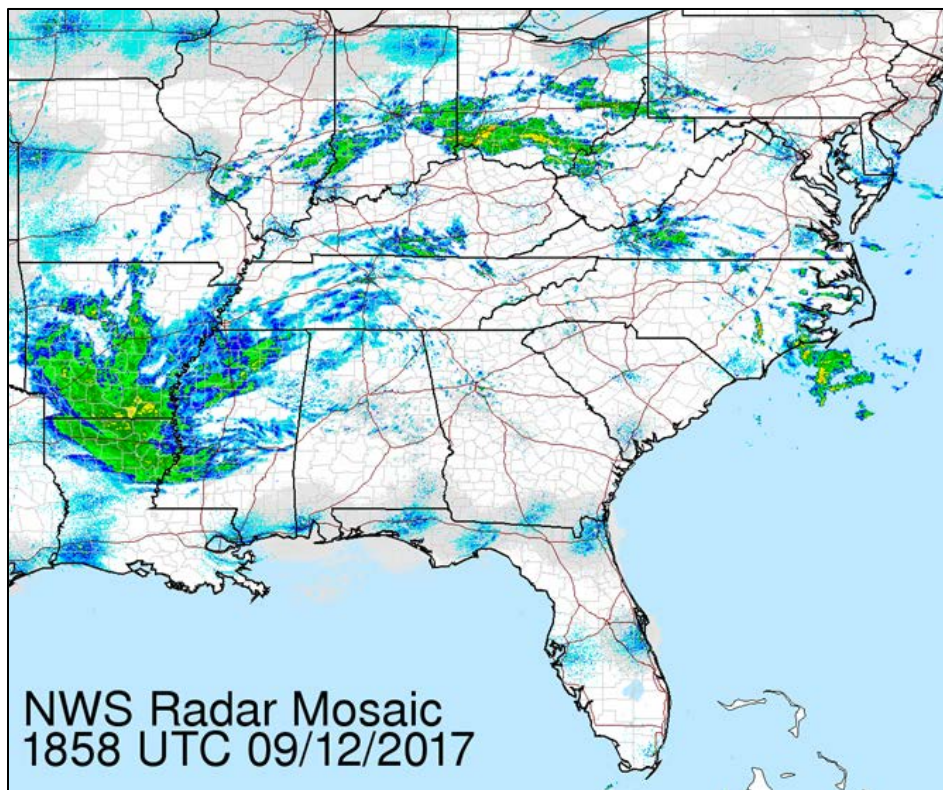
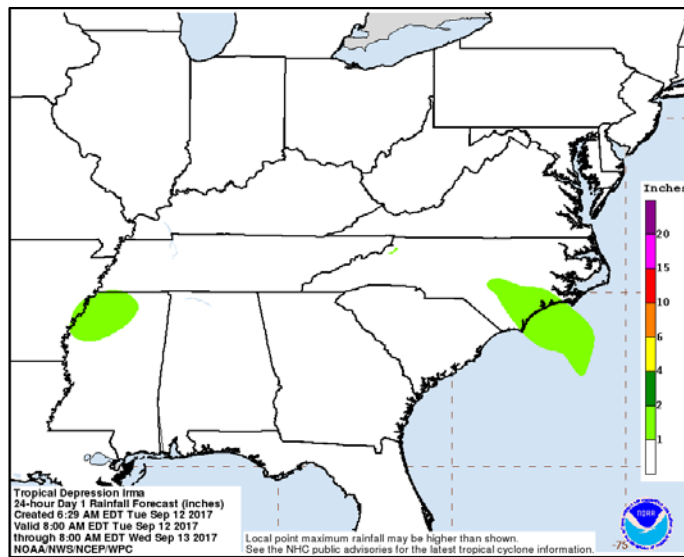
### Irma Oil and Natural Gas Sector Summary (as of 2:30 PM EDT Tuesday)

- Several ports throughout the region reopened (with restrictions) on September 12, including Port Everglades and Tampa.
- Florida is working closely with gasoline truckers & shippers to ensure timely delivery of product to retail stations.
- No issues have been reported with any key pipelines transporting petroleum products across the affected region.

**IRMA OVERVIEW**

As of 11:00 AM EDT, the center of the remnants of Irma was 50 miles north-northwest of Birmingham, Alabama, moving north-northwest, with maximum sustained winds of 10 MPH. The remnant rain bands from Irma are expected to produce additional rain accumulations of 1 to 2 inches across portions of North Carolina, northern Mississippi, eastern Arkansas, as well as western Tennessee and Kentucky. River flooding will persist across the Florida peninsula and additional river flooding will be possible across Georgia and Eastern Alabama.

All hurricane and tropical storm warnings and watches have been terminated and the National Hurricane Center has issued its final advisory on the system. Flood warnings are in effect for some coastal areas of Florida, Georgia, and the Carolinas.



# Hurricane Irma

## ELECTRICITY SECTOR

### IMPACTS TO PUERTO RICO AND U.S. VIRGIN ISLANDS

ELECTRICITY OUTAGES AS OF 6:00 PM EDT 09/11/2017			
Impacted State	Current Confirmed Customer Outages	Percent of Confirmed State Customers without Power	24-hr Peak Customer Outages
Puerto Rico	303,998	19.4%	368,382
St. John	2,893	100%	2,893
St. Thomas	19,574	99%	19,581
St. Croix	6,905	31%	6,905
<b>Total</b>	<b>333,370</b>	-	*

*\*There is no sum of the Peak Customer Outage column because peaks for individual utilities occur at different times; a total would not reflect peak outages.*

- As of 6:40 AM EDT, September 12, the Puerto Rico Electric Power Authority (PREPA) is reporting 303,998 customers (19.4% of total customers) are without power.
- As of Tuesday afternoon, September 12, the U.S. Virgin Islands Water and Power Authority (WAPA) reported several feeders on St. Thomas are energized. There are currently two generators online with a capacity of 39 MW. An 800 kW generator has arrived at the airport on St. Thomas on September 12.
  - Restoration efforts will continue as WAPA works to get critical facilities reenergized on the islands of St. Thomas and St. John. These islands are interconnected and served by one electric grid.
  - DOE is working closely with WAPA, APPA, and FEMA on a plan to facilitate mutual aid for the U.S. Virgin Islands.
- The island of St. Croix has 6,905 outages. All underground feeders on the island of St. Croix are operational as WAPA continues restoration efforts.
  - WAPA is expected to issue a restoration schedule for communities and neighborhoods across St. Croix still without electrical service.



**IMPACTS TO CONTINENTAL UNITED STATES**

As the storm passes and conditions permit, damage assessments and restoration efforts have begun by utilities throughout the region, including Tampa Electric, Florida Power & Light, and Duke Energy Florida. A nationwide mutual assistance process is underway, involving 49 states and Canada.

ELECTRICITY OUTAGES AS OF 2:30 PM EDT 09/12/2017			
Impacted State	Current Confirmed Customer Outages	Percent of Confirmed State Customers without Power	24-hr Peak Customer Outages
Florida	4,788,277	48%	6,013,853
Georgia	932,587	22%	1,342,008
South Carolina	140,759	6%	295,803
North Carolina	56,834	1%	70,953
Alabama	20,050	1%	57,000
<b>Total</b>	<b>5,938,507</b>	--	--

*\*There is no sum of the Peak Customer Outage column because peaks for individual utilities occur at different times; a total would not reflect peak outages.*

**Florida**

- As of 2:30 PM EDT, September 12, Florida has 4,788,277 customer outages (48% of total state customers).
  - Florida Power and Light (FPL) has 2,698,130 customer outages.
  - Duke Energy Florida Inc. has 1,188,320 customer outages.
  - Tampa Electric (TECO) has 263,687 customer outages.
- FPL estimates power restoration to most of the West Coast of Florida by September 22 and to the East Coast by the end of the weekend, September 17. Restoration times for more severely impacted areas is to be determined.
  - FPL has mobilized 19,500 personnel from over 30 states and stood up 22 staging sites in order to expedite restoration. FPL reports this is the largest restoration workforce ever assembled in the U.S.
- Since the storm impacts, TECO has restored 145,000 customers. TECO plans to provide estimated restoration information today, September 12.
  - TECO has requested 3,500 personnel from other utilities through mutual aid assistance to assist in restoration efforts. Damage and restoration assessment is underway.
  - As of 10:00 AM EDT, 15 truck crews from Nova Scotia, Canada are on their way to assist TECO with restoration.
- Duke Energy Florida has reported that restoration could take a week or longer for the hardest hits areas of Pinellas, Orange, Seminole, Volusia, and Highlands counties.
- Kissimmee Utility has restored 87% of customers impacted by Irma as of 10:00 AM EDT, September 12.



**Georgia**

- As of 2:30 PM EDT, September 12, Georgia has 932,587 customer outages (22% of total state customers).
  - Georgia Power has 684,452 customer outages.
  - Jackson Membership Corporation has 37,474 outages.
  - Satilla Rural Electric Member Corporation has 22,839 customer outages.
- Georgia Power has begun its first full day of full-scale damage assessment today, September 12.
  - Georgia Power has restored power to 270,000 of its customers following the storm.
  - Georgia Power reported that restoration could take upwards of several days if not weeks. The damage and outages are primarily concentrated in Central, South, and Coastal Georgia.
  - Georgia Power has mobilized 5,500 field personnel to respond & aid restoration efforts.

**South Carolina**

- As of 2:30 PM EDT, September 12, South Carolina has 140,759 customer outages (6% of total state customers).
  - Duke Energy has 76,201 customer outages.
  - South Carolina Electric and Gas (SCE&G) has 35,800 customer outages.
  - Blue Ridge Electric Coop has 18,513 customer outages.
- South Carolina Electric & Gas Company (SCE&G) reports outages are under evaluation and are concentrated in the Beaumont and Charleston areas.
- Blue Ridge Electric Cooperative reported restoration will take at least a couple days due to the number of broken poles in their system.
  - Blue Ridge has crews from Maryland, North Carolina, and Virginia assisting with restoration efforts. Additional personnel from other cooperatives are scheduled to join the efforts early Wednesday, September 13.

**North Carolina**

- As of 2:30 PM EDT, September 12, North Carolina has 56,834 customer outages (1% of total state customers).
  - Duke Energy has 48,130 customer outages.
  - Haywood Electric Member Corporation has 8,148 customer outages.
  - French Board Electric Member Corporation has 333 customer outages.
- As of 1:00 PM EDT, September 12, Duke Energy Carolinas has hundreds of workers in North Carolina conducting damage assessments and making repairs.
- Duke Energy Carolinas has 4,500 personnel staged in Western North Carolina and Upstate South Carolina ready to respond to outages in their service territories.

**Alabama**

- As of 2:30 PM EDT, September 12, Alabama has 20,050 customer outages (1% of total state customers).
  - Alabama Power has approximately 20,000 customer outages.
- Alabama Power has crews out to restore power in the hardest hit areas, mostly in East Alabama: Phenix City, Auburn, and Roanoke.
  - Alabama Power is working to shift resources today, September 12 so more crews can assist in restoration efforts.



## OIL &amp; GAS SECTOR

## PORTS

- The U.S. Coast Guard has set the following conditions for ports and waterways in the U.S. Southeast and Caribbean as a result of Hurricane Irma. Ports in eight port sectors are either closed or open with restrictions. Listed in the table are ports that receive petroleum products.

<b>Status of Southeast and Caribbean Ports as of 02:00 PM EDT 09/12/2017</b>			
<b>Port</b>	<b>Average Daily Receipts (b/d)*</b>	<b>Status</b>	<b>Date Stamp</b>
<b>Sector Miami</b>			
Port Everglades	298,000**	Open with restrictions. Daylight operations only. USCG surveying navigation channels 9/12.	09/12/17
Miami	1,500	Port Condition Zulu. Closed. USCG survey scheduled to be completed 9/12.	09/12/17
Port of Palm Beach	500	Port Condition Zulu. Closed.	09/08/17
<b>Sector Key West</b>			
All Ports	--	Port Condition Zulu. Closed.	09/08/17
<b>Sector St. Petersburg</b>			
Tampa	273,700	Port Condition IV. Open with restrictions. One way traffic near Egmont and at night throughout Tampa Bay. Ft. Myers and all areas south to the extent of the COTP zone remain in Port Condition Zulu.	09/12/17
Port Manatee	700	Port Condition Zulu. Closed.	09/09/17
<b>Sector Jacksonville</b>			
Port of Jacksonville	69,800	Port Condition Zulu. Closed.	09/09/17
Port Canaveral	32,200	Port Condition Zulu. Closed.	09/09/17
<b>Sector Mobile</b>			
Mobile (AL)	168,000	Port Status Normal. Open.	09/11/17
Pascagoula (MS)	(outbound)	Port Status Normal. Open.	09/11/17
Pensacola (FL)	11,400	Port Status Normal. Open.	09/11/17
Panama City (FL)	8,500	Port Condition Zulu. Closed.	09/10/17
Gulf Intercostal Waterway	--	Port Condition Zulu (mm 205 to mm 375) Port Status Normal (mm 45 to mm 205)	09/11/17
<b>Sector Savannah</b>			
Savannah	12,600	Port Condition IV. Open with restrictions.	09/12/17
<b>Sector Charleston</b>			
Charleston	16,500	Open with no restrictions.	09/12/17
<b>Sector North Carolina</b>			
Wilmington	11,500	Open.	09/09/17
<b>Sector Hampton Roads</b>			
Hampton Roads	7,400	Open.	09/06/17



Status of Southeast and Caribbean Ports <i>as of 02:00 PM EDT 09/12/2017</i>			
Port	Average Daily Receipts (b/d)*	Status	Date Stamp
<b>Sector San Juan</b>			
Puerto Rico Ports	139,000**	Port Readiness Condition Four. Guayama is open with restrictions. All other ports are open with no restrictions.	09/09/17
U.S. Virgin Islands Ports	18,000**	Port Readiness Condition Four. Christiansted, St. Croix; St. John, Cruz Bay, USVI; Redhook, St. Thomas are open with restrictions. All other ports are closed (Zulu).	09/09/17

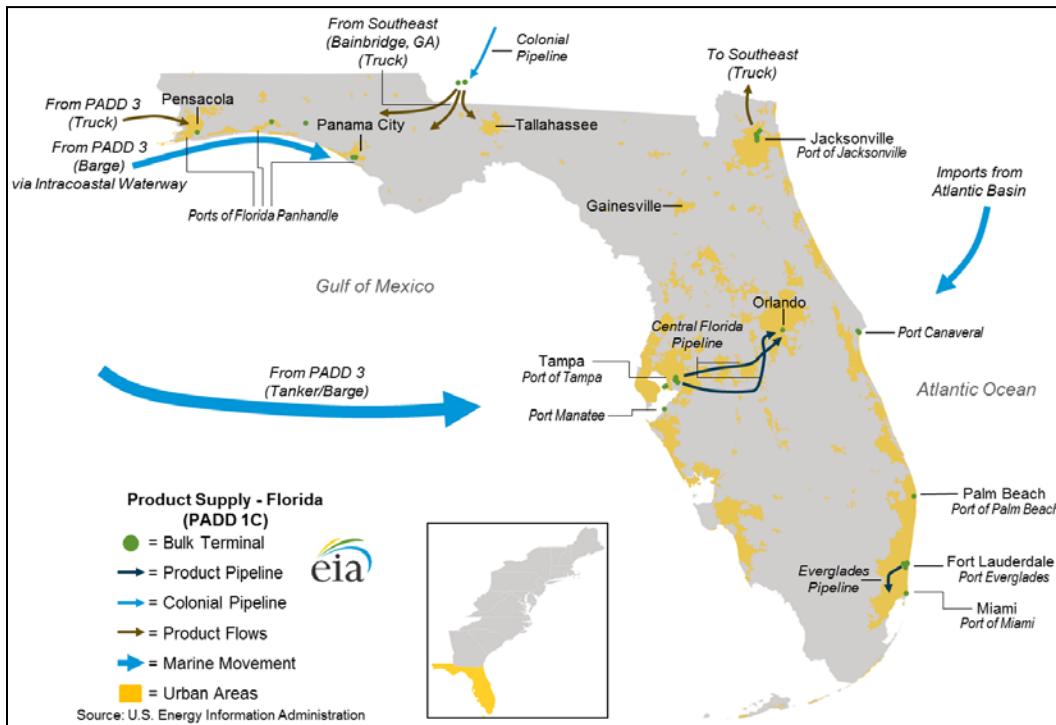
\*Average receipts of transportation fuels (gasoline, distillate, and jet fuel), unless otherwise noted, when port is open.

\*\*Includes bunker fuel and fuel oil and distillate for power generation.

Source: Receipt data from [U.S. EIA](#), USACE data (2013), EIA Company Level Imports

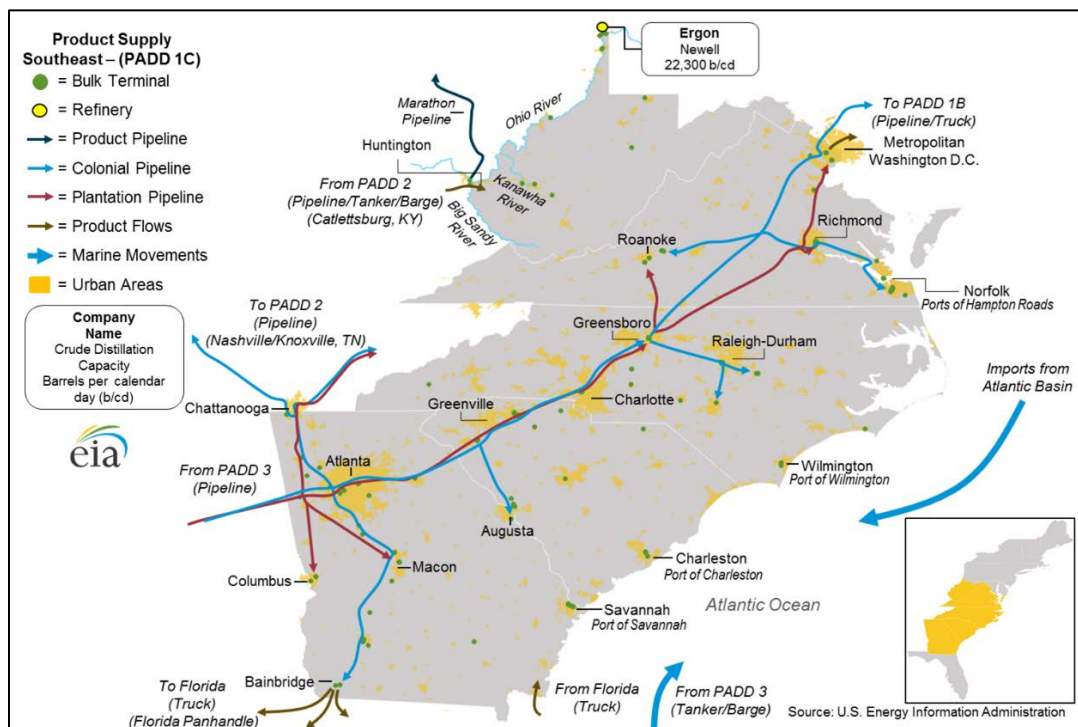


- Below is a map of key petroleum ports and petroleum product pipelines in Florida.



Source: EIA: <https://www.eia.gov/analysis/transportationfuels/padd1n3/>

- Below is a map of key petroleum ports and petroleum product pipelines in the Southeast region of the U.S.



Source: EIA: <https://www.eia.gov/analysis/transportationfuels/padd1n3/>



# Hurricane Harvey

## OIL & GAS SECTOR

### PETROLEUM REFINERIES

- As of 02:00 PM EDT, September 12, four refineries in the Gulf Coast region were shut down, according to public reports. These refineries have a combined refining capacity of 734,300 b/d, equal to 7.6% of total Gulf Coast (PADD 3) refining capacity and 4.0% of total U.S. refining capacity.
- Five refineries are in the process of restarting after being shut down. This process may take several days or weeks to start producing product, depending whether any damage is found during restart. Production should be assumed to be minimal until restart is completed. These refineries have a combined capacity 1,316,399 b/d, equal to 13.6% of total Gulf Coast (PADD 3) refining capacity and 7.1% of total U.S. refining capacity.
- At least six refineries in the Gulf Coast region were operating at reduced rates, according to public reports. These refineries have a combined total capacity of 2,327,500 b/d, equal to 24.0% of total Gulf Coast (PADD 3) refining capacity and 12.6% of total U.S. refining capacity. (NOTE: Actual crude throughput (production) reductions are lower than the total combined capacity).

### PORTS

- The U.S. Coast Guard has set the following conditions for ports and waterways in the U.S. Gulf Coast region as a result of Harvey. Eleven ports are closed or open with restrictions. Crude imports at these ports averaged 2,077,000 b/d from January through May 2017.

Status of Texas and Louisiana Gulf Coast Ports as of 02:00 PM EDT 09/12/2017			
Port	Crude Imports Jan-May 2017 (b/d)	Status	Date Stamp
<b>Sector Corpus Christi</b>			
Brownsville	--	Open.	08/31/17
Corpus Christi	245,000	Port Condition Recovery. Open with restrictions. Allowing vessels up to 43' draft to transit during daytime hours only.	09/11/17
<b>Sector Houston and Galveston</b>			
Freeport	133,000	Open. 24/7. 38' max draft.	09/05/17
Galveston	114,000	Port Condition Recovery. Open with restrictions. Ship channel also open with restrictions. Galveston Bay Entrance Channel, Outer Bar Channel, Inner Bar Channel, Bolivar Roads Anchorages, Bolivar Roads Channel, and Galveston Harbor open, no restrictions, 24/7.	09/08/17



Houston	646,000	Port Condition Recovery. Open with restrictions. Houston Ship Channel open 24/7 below Sidney Sherman bridge with draft restrictions: <ul style="list-style-type: none"> <li>Entrance Channel to Houston Cement West – 42-foot max draft.</li> <li>Houston Cement West to Sidney Sherman Bridge – 40-foot max draft.</li> </ul> Intracoastal Waterway open 24/7.	09/08/17
Texas City	134,000	Open. 24/7.	09/05/17
<b>Sector Port Arthur and Lake Charles</b>			
Beaumont	33,000	Open with restrictions. Shoaling, which caused port closure to ship traffic, was identified 9/10 near ExxonMobil and Port of Beaumont facilities. Max draft of 26 feet established for waters of Neches River from Light 68 to the Port of Beaumont. No daylight restrictions.	09/10/17
Lake Charles	218,000	Port Condition Recovery. Open with restrictions. 37 feet draft restrictions of the Calcasieu Ship Channel.	09/05/17
Nederland	--	Port Condition Recovery. Open with restrictions. 38.5 feet draft restrictions for Sabine-Neches Waterway.	09/09/17
Port Arthur	687,000	Port Condition Recovery. Open with restrictions. 38.5 feet draft restrictions for Sabine-Neches Waterway.	09/09/17
Port Neches	--	Port Condition Recovery. Open with restrictions. 38.5 feet draft restrictions for Sabine-Neches Waterway.	09/09/17
Sabine Pass	--	Port Condition Recovery. Open with restrictions. 38.5 feet draft restrictions for Sabine-Neches Waterway.	09/09/17

Source: U.S. Coast Guard



# Emergency Declarations & Waivers

## EMERGENCY DECLARATIONS

- Twelve states, including Puerto Rico and USVI, have declared state emergencies due to Harvey and Irma. Note that Kansas has not declared a State of Emergency, however is using its resources to assist states affected by Harvey. These declarations automatically waive select Federal Motor Carrier Safety Regulations (FMCSRs), including hours-of-service (HOS) regulations, for motor carriers hauling resources to aid in restoration efforts. The declarations exempt FCMSR in every state along the motor carrier’s route as long as the final destination is with the declared disaster areas. Some HOS waivers apply specifically to the movement of petroleum products in or through the state.
- In addition, the Federal Motor Carrier Safety Administration (FMCSA) issued a Regional Emergency Declaration for Hurricane Harvey exempting FMCSRs in the States of Texas and Louisiana. On August 31, the FMCSA expanded the Regional Emergency Declaration to additional states and Washington, DC. On September 6, the Regional Emergency Declaration was extended for states affected by Hurricane Irma. On September 7, the Irma Regional Declaration was expanded again to include states in the Mid-Atlantic and Northeast. On September 11, an Amended Regional Declaration of Emergency was released that extended the exemption of FMCSRs in all 27 states and Washington D.C. through September 30, 2017, or the end of the emergency as defined.
- The table below summarizes emergency declarations and HOS waivers issued by states in response to the impacts of Hurricane Harvey and Hurricane Irma.

State Emergency Declarations and HOS Waivers as of 02:00 PM EDT 09/12/2017				
State	Details	Effective Dates		Status
		Start	End	
Regional (Multi-State)	Regional Emergency Declarations and FMCSR waivers issued by FMCSA. <b>For Harvey:</b> Applies to Alabama, Arkansas, Colorado, Connecticut, Delaware, Florida, Georgia, Illinois, Indiana, Kansas, Kentucky, Louisiana, Maryland, Mississippi, Missouri, New Jersey, New York, North Carolina, Ohio, Oklahoma, Pennsylvania, Tennessee, Texas, South Carolina, Virginia, Washington, D.C., and West Virginia. <b>For Irma:</b> Applies to Alabama, Florida, Georgia, Mississippi, North Carolina, South Carolina, Tennessee, Connecticut, Delaware, Maine, Maryland, Massachusetts, New Hampshire, New Jersey, New York, Pennsylvania, Rhode Island, Vermont, Virginia, West Virginia, Washington D.C., the Commonwealth of Puerto Rico and the U.S. Virgin Islands.	For Harvey: 08/25/17  Expanded for Harvey: 08/31/17  For Irma: 09/06/17  Expanded For Irma: 09/07/17  Extended: 09/11/17	Extension for All States: 09/30/17	Active



Alabama	State of Emergency/HOS waiver issued for petroleum products and petroleum-related supplies, goods, and services in the State.  International Registration Plan and International Fuel Tax Agreement requirement suspended for vehicles engaged in or travelling through Alabama for disaster relief efforts in Florida.	08/30/17  09/08/17	09/29/17  10/08/17	Active
Florida	State of Emergency/HOS waiver	09/04/17	11/03/17	Active
Georgia	State of Emergency/HOS waiver expanded to all counties in Georgia on 9/10.	For Harvey: 08/30/17 For Irma: 09/07/17 Expanded for Irma: 09/08/17 Expanded for Irma: 09/10/17	09/22/17	Active
Kansas	Governor acknowledged state of emergency in Texas and declared that licensing rules, registration and fuel tax permits, and oversize vehicle permit fees are waived for motor carriers and persons operating motor vehicles directly participating in the relief and restoration effort.	08/30/17	09/30/17	Active
Kentucky	State of Emergency/HOS waiver issued for transporters of food, water, medicine, fuel and other commodities within the affected areas to aid in emergency response of affected areas.  State of Emergency Declaration/HOS waiver for petroleum products.	08/28/17  08/31/17	09/27/17  09/30/17	Active  Active
Louisiana	State of Emergency.	08/23/17	TBD	Active
Michigan	State of Emergency/HOS waiver issued for petroleum products through the state.	08/31/17	09/15/17	Active
North Carolina	State of Emergency/HOS waiver issued for petroleum products.  State of Emergency/HOS waiver issued for petroleum products, and emergency relief supplies and services through the state.	08/31/17  09/07/17	09/30/17  10/06/17	Active  Active



Puerto Rico	State of Emergency/HOS waiver	09/04/17	--	Active
South Carolina	State of Emergency/HOS waiver issued for petroleum products through the state.	09/06/17	10/06/17	Active
Tennessee	Limited State of Emergency. EO-67 suspends certain vehicle restrictions for vehicles providing emergency supplies, equipment, or mobile housing units	09/11/17	11/08/17	Active
Texas	State of Disaster declared for 61 counties in Texas.	08/23/17 Expanded: 08/30/17 Expanded: 09/01/17	TBD	Active
Virginia	State of Emergency/HOS waiver issued for petroleum products through the state.	For Harvey: 09/01/17 For Irma: 09/07/17	For Harvey: 09/15/17 For Irma: 06/30/18, or rescinded.	Active
U.S. Virgin Islands	State of Emergency/HOS waiver	09/04/17	--	Active

Sources: [U.S. Department of Transportation](#); Governor Office Websites

**FUEL WAIVERS**

- The table below lists fuel-related waivers issued by the U.S. Environmental Protection Agency (U.S. EPA) and other Federal and State agencies for Hurricanes Harvey and Irma.
- On August 30, U.S. EPA issued a multi-state (13 states) waiver for requirements of low-RVP conventional gasoline and reformulated gasoline (RFG) in response to Hurricane Harvey. The next day, the waiver was expanded to include 38 states and Washington, DC. On September 7, in preparation for Hurricane Irma, the EPA extended the temporary waiver until September 26. In addition, EPA extended the Low Volatility SIP waiver in Texas and other federally-enforceable areas through September 16.

State Fuel Waivers as of 02:00 PM EDT 09/12/2017					
State	Waiver	Issued By	Effective Dates		Status
			Start	End	
Multi-state waiver	<b>RVP</b> standard waived for gasoline sold in affected counties where low-RVP gasoline is required (9.0 RVP or lower). Allows sale of gasoline up to 11.5 psi RVP in all states located in PADD 1, PADD 2, and PADD 3. <b>RFG</b> standard is also waived in the designated regions. Also waived are provisions prohibiting the blending of RFG blendstock with conventional gasolines or blendstocks.	U.S. EPA	For Harvey: 08/30/17  Expanded for Harvey: 08/31/17  Extended for Irma: 09/07/17	For RVP: 09/15/17  For RFG: 09/26/17	Active



State Fuel Waivers as of 02:00 PM EDT 09/12/2017					
State	Waiver	Issued By	Effective Dates		Status
			Start	End	
TX	<b>RFG</b> requirement waived in Houston-Galveston-Brazoria areas. Waiver expanded to four-county Dallas-Fort Worth RFG area 8/26. Allows the sale or distribution of conventional gasoline.	U.S. EPA	08/25/17  Expanded: 08/26/17	09/15/17	Active
TX	<b>7.8 psi RVP</b> standard waived for gasoline sold in 20 counties where low-RVP gasoline is required and are also under the Governor's Disaster Declaration. Waiver expanded to 98 counties required to use low-RVP fuel 8/26. Allows sale of gasoline up to 9.0 psi RVP.	U.S. EPA	08/25/17	09/16/17	Active
TX	Limited waiver of highway diesel fuel red dye requirements. Allows sale, distribution, and use of red dye NRLM diesel fuel for use in highway diesel vehicles, but diesel fuel must meet 15 ppm standard.	U.S. EPA	08/29/17	09/15/17	Active
FL	Limited waiver of highway diesel fuel red dye requirements. Allows sale, distribution, and use of red dye NRLM diesel fuel for use in highway diesel vehicles, but diesel fuel must meet 15 ppm standard.	U.S. EPA	09/06/17	09/22/17	Active
	Waiver of tax penalties when dyed diesel fuel is sold and used for highway use in Florida.	U.S. IRS	09/06/17	09/22/17	Active
LA	RVP requirements of 7.8 psi and 9.0 psi waived in applicable areas. Permits the sale or distribution of winter gasoline with an 11.5 psi RVP.	State of Louisiana	08/29/17  Expanded: 08/30/17	09/15/17	Active
MI	<b>RVP</b> regulations waived. Permits the transportation and sale of motor fuels 9.0 psi RVP in Wayne, Oakland, Macomb, St. Clair, Livingston, Washtenaw, Monroe, and Lenawee counties, and up to 11.5 psi RVP elsewhere in Michigan.	State of Michigan	08/31/17	09/15/17	Active
MS	<b>RVP</b> standards of 9.0 psi waived. Permits the sale or distribution of winter gasoline with an 11.5 psi RVP.	State of Mississippi	08/30/17	09/15/17	Active
SC	<b>RVP</b> standards of 9.0 psi waived. Permits the sale or distribution of winter gasoline with an 11.5 psi RVP. Allows the comingling of <b>RFG</b> with conventional gasoline. Waives butane blending and T V/L = 20 requirements.	State of South Carolina	09/07/17	10/31/17	Active



State Fuel Waivers as of 02:00 PM EDT 09/12/2017					
State	Waiver	Issued By	Effective Dates		Status
			Start	End	
VA	Waived the <b>RVP</b> limit for gasoline ethanol blends prescribed by regulations. Extended waiver to apply through duration of Hurricane Irma impact on 9/8.	State of Virginia	09/01/17 Extended: 09/08/17	Until further notice.	Active

Sources: U.S. Environmental Protection Agency; State Governments

**OTHER WAIVERS**

- On September 11, the U.S. EPA issued a blanket waiver for all power plant facilities in Florida, allowing them to operate without meeting all pollution controls in order to maintain the supply of electricity to customers and critical facilities across the state as a result of Hurricane Irma. The ‘no action assurance’ is temporary and will terminate on September 26, 2017; it was requested by the Florida Department of Environmental Protection and determined by EPA to be in the public’s interest. The facilities must continue to comply with all other federal, state and local environmental law and are still required to monitor and report levels of regulated contaminants released.
- On September 8, the Acting Secretary of **Homeland Security** waived Jones Act requirements for shipping refined petroleum products –including gasoline, diesel and jet fuel— to Florida for a 7-day period. The waiver of the Jones Act will allow foreign flag vessels to bring in fuel from New York, Pennsylvania, Texas, and Louisiana to South Carolina, Georgia, Florida and Puerto Rico to help with fuel shortages amid the threat from Hurricane Irma.
- On September 8, 2017, **PHMSA** issued an Emergency Waiver Order under 49 U.S.C. 5103 and Stafford Act declarations made for the U.S. Virgin Islands, Puerto Rico, Florida, and South Carolina, to persons conducting operations under the direction of the Environmental Protection Agency and the U.S. Coast Guard that support appropriate actions to prepare for, respond to, and recover from a threat to public health, welfare, or the environment caused by actual or potential oil and hazardous materials incidents resulting from Hurricane Irma in Puerto Rico, U.S. Virgin Islands, Florida, and South Carolina. On September 10, 2017, based on a Stafford act emergency declaration, PHMSA amended this order to include Georgia.
- On September 1, **PHMSA** issued an Emergency Stay of Enforcements for operators affected by Hurricane Harvey. The declaration states that PHMSA does not intend to take any enforcement action relating to their noncompliance with certain operator qualification requirements, or pre-employment and random drug testing requirements, arising from the use of personnel for pipeline activities related to response and recovery. On September 7, PHMSA issued an enforcement stay for the waiver to include states affected by Hurricane Irma. The states included in this extension are Florida, Georgia, North Carolina, South Carolina, and Puerto Rico.
- On September 5, the **Federal Energy Regulatory Commission (FERC)** approved an emergency waiver tariff, effective immediately, allowing the pipeline system to accept 11.5 RVP gasoline (A3) to fill nominations for 7.8 RVP gasoline (A1) and 9.0 RVP gasoline (A2); and to ship conventional gasoline in lieu of reformulated gasoline. Colonial’s tariffs and tariff practices would not normally permit it to accept product that does not conform to the specifications of the product that was nominated.

