



Pacific Northwest
NATIONAL LABORATORY

*Proudly Operated by **Battelle** Since 1965*

VOLTRON™ Deployment Management

CRAIG ALLWARDT
JEREME HAACK

Pacific Northwest National Laboratory

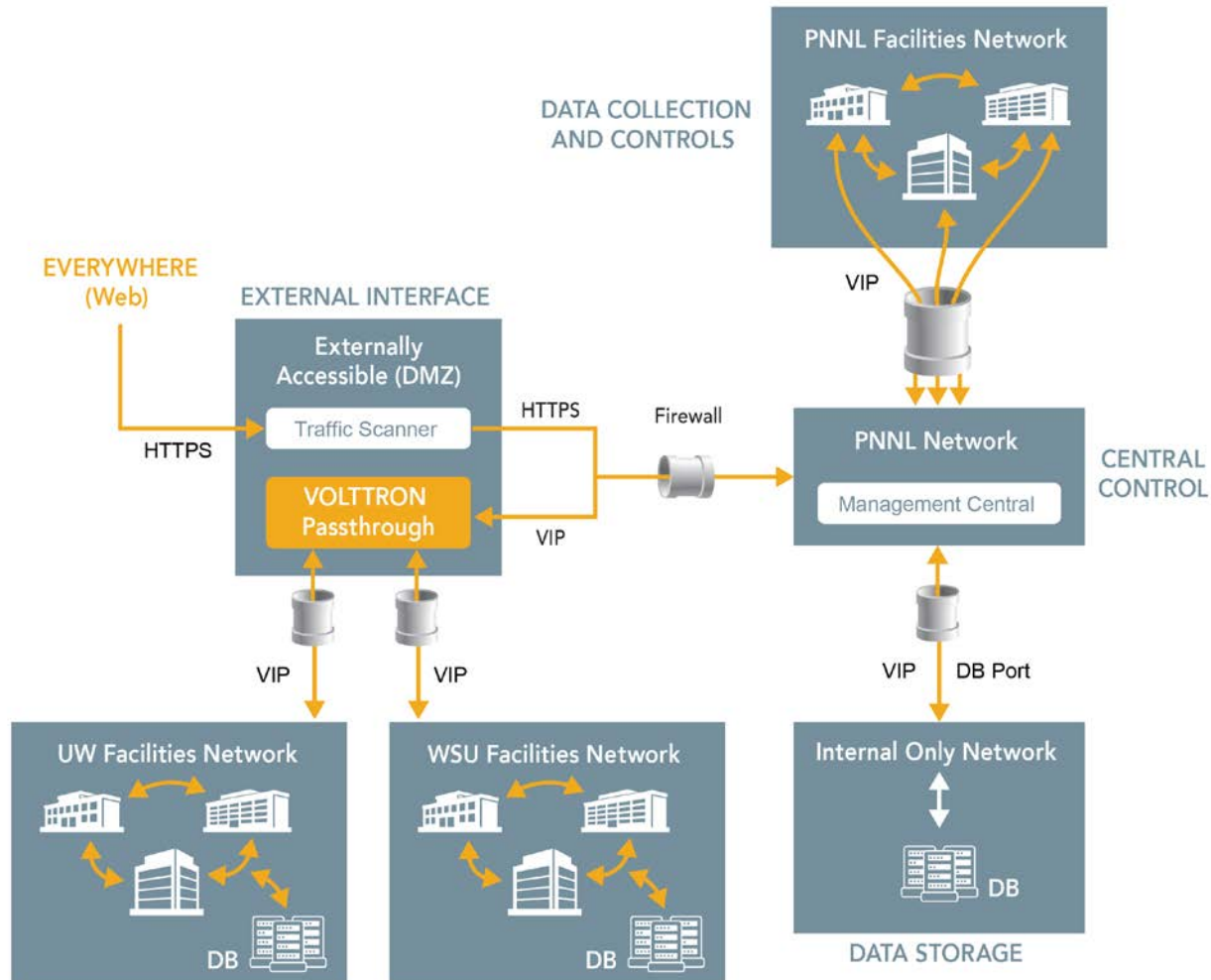
VOLTRON™ 2017



Deployment Management

- ▶ CETC Deployment History
- ▶ Decisions
- ▶ Current State

VOLTRON™ Campus Deployment (The Goal)



PNNL Campus Deployment (The Beginning)

- ▶ First collection on a leased building
 - Data pushed to cloud instance for storage
 - Initial use case for Forwarder Agent
 - Simple, manual install and monitoring
- ▶ Expanded out piecemeal to other buildings (currently at 8)
- ▶ Manual updates become untenable
- ▶ Monitoring even more important
- ▶ Wider potential impact of problems

Deployment Driven Requirements (The Needs)

- ▶ Possible Networking Issues
 - Alerts
 - LogWatcher
 - External Monitoring
- ▶ Experiments on Real Buildings
 - Override/Revert of Known Good State
 - Threshold Detection
- ▶ External Collaboration
 - Topic replacement
 - Anonymization of Building Source
 - Filtering of topics forwarded off-site
- ▶ External Logging Real Time Monitoring
 - Splunk
 - Grafana
 - Prometheus



Configuration Management (The Pain)

- ▶ Original Process:
 - ssh into box
 - Install dependencies
 - Clone (pull) repository
 - Configure Instance(s)
 - Package, configure and install many agents
 - Setup keys for forwarder and VOLTTRON™ Central Management
- ▶ Repeated on every instance!

- ▶ Updates can be painful and require almost the same level of work

Automated Configuration Management (The Solution!)



Pacific Northwest
NATIONAL LABORATORY

Proudly Operated by **Battelle** *Since 1965*

▶ Options

- Chef
- Puppet
- Ansible

▶ Selected Ansible

- Requires SSH and simple-json
- No service running on the target system
- Active development open source environment
- Ansible Galaxy
 - Roles for just about everything

VOLTTRON™ Roles for Different Platform Responsibilities

- ▶ **volttron-common**
 - Configures and bootstraps the volttron environment.
- ▶ **volttron-service**
 - Starts volttron as a systemd based service
- ▶ **volttron-central**
 - Installs volttron central, volttron central platform and platform historian, alerter, emailer
- ▶ **volttron-collector**
 - Installs masterdriver, actuator, volttron central platform
- ▶ **volttron-agents**
 - Allows ad-hoc agents to be installed on an instance
- ▶ **Original Process:**
 - ssh into box
 - Install dependencies
 - Clone (pull) repository
 - Configure Instance(s)
 - Package, configure and install many agents
 - Setup keys for forwarder and VOLTTRON™ Central Management
- ▶ Repeated on every instance!
- ▶ Updates can be painful and require almost the same level of work



Benefits

- ▶ Declarative
- ▶ Repeatable
- ▶ Easy to Modify at Scale
- ▶ Saves Time