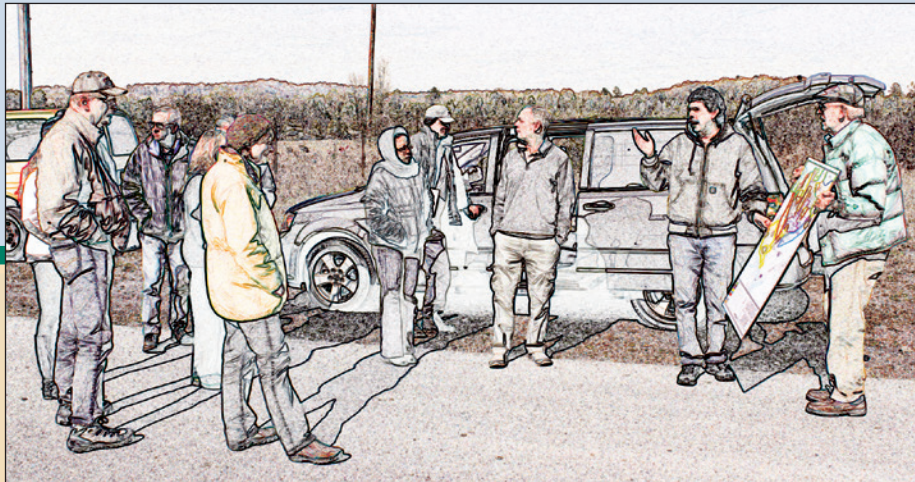


# Public Involvement Plan



for CERCLA  
Activities at the  
U.S. Department  
of Energy  
Oak Ridge Site

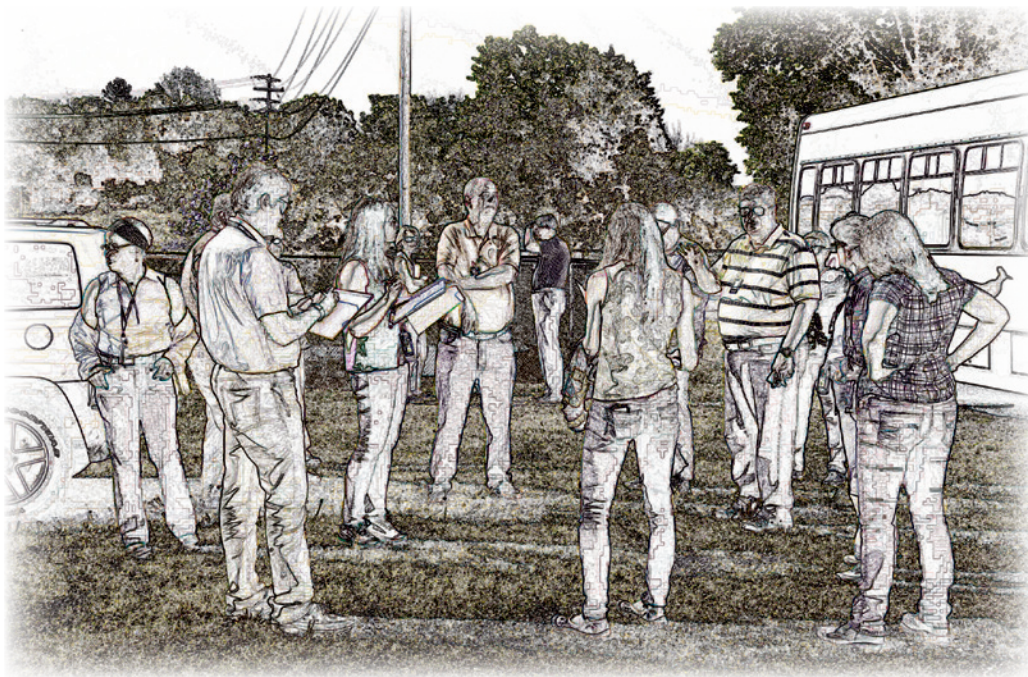


2016 Update



Both the Comprehensive Environmental Response, Compensation, and Liability Act of 1980 (CERCLA) and the Federal Facility Agreement require U.S. Department of Energy Oak Ridge Environmental Management (DOE-OREM) to prepare and publish a community relations plan. Publication of Public Involvement Plan for CERCLA Activities at the U.S. Department of Energy Oak Ridge Site meets that requirement and meets a Federal Facility Agreement milestone.

This Public Involvement Plan is updated every three years to ensure the timeliness and usefulness of the information and resources provided.





**Public Involvement Plan for CERCLA Activities  
at the U.S. Department of Energy  
Oak Ridge Site**

Date Issued—March 2017

Prepared by

UCOR

Communications and Community Programs

Prepared for the

U.S. Department of Energy

Office of Environmental Management

URS | CH2M Oak Ridge LLC

Managing and Safely Delivering the Department of Energy's Vision  
for the East Tennessee Technology Park Mission  
under contract DE-SC-0004645

# Message from Sue Cange, Manager

## DOE Oak Ridge Office of Environmental Management

Dear Oak Ridge Reservation Neighbor,

As a longtime resident of East Tennessee, I'm always proud to witness and experience the cooperative relationship that exists between the U.S. Department of Energy (DOE), the City of Oak Ridge, and Anderson and Roane counties. I believe we have the best partner community in the DOE complex—a relationship that was formed through years of listening, teamwork, and a unified vision for the region.

With cleanup projects happening in Anderson and Roane County, we understand that our mission directly affects and impacts local residents. This awareness makes timely and transparent communication and community engagement some of our highest priorities.

Our Public Involvement Plan is one of the many tools we use to educate the surrounding communities about our cleanup activities and their role in our future decisions and priorities. This plan details our ongoing work, where to find the latest updates, how you can contribute to the process, and who to contact. Our goal is to learn about the interests, concerns, and ideas of stakeholders as we develop our plans to remove risks and legacy materials from Oak Ridge.

This document is updated every three years, and I am very pleased with what we have accomplished since we issued our previous Public Involvement Plan. The transformation and progress since then is visible and impressive, especially at the East Tennessee Technology Park. However, much work remains across the Oak Ridge Reservation as we work to remove hazardous facilities and contaminants to improve the safety of workers and local residents.



**Sue Cange**

This progress is bringing an end to long-standing projects, and now we are laying the foundation for significant cleanup activities at the Y-12 National Security Complex and the Oak Ridge National Laboratory. This stage presents numerous opportunities for collaboration as we strive to plan and execute the next phase of cleanup projects efficiently and in the best interests of DOE and our community.

We are thankful and appreciative of your time, interest, and participation in the public involvement process. Your involvement is crucial as we continue to make critical decisions related to environmental cleanup in Oak Ridge. Please take a moment to look through this booklet and learn how you can become involved to help us achieve a remediated, modernized, and reindustrialized Oak Ridge Reservation.

A handwritten signature in black ink that reads "Sue Cange".

# Contents

<b>Executive Summary</b>	<b>v</b>
Chapter 1 <b>Getting Involved</b>	<b>1</b>
Chapter 2 <b>Understanding the CERCLA Process</b>	<b>3</b>
Chapter 3 <b>Cleaning Up the Oak Ridge Reservation</b>	<b>8</b>
Chapter 4 <b>Public Involvement Opportunities</b>	<b>10</b>
Chapter 5 <b>Avenues of Communication</b>	<b>14</b>
<b>Appendix A. Public Participation and Community Relations</b>	<b>21</b>
<b>Appendix B. Other Environmental Laws and Directives</b>	<b>26</b>
<b>Appendix C. CERCLA Public Involvement Requirements</b>	<b>31</b>
<b>Appendix D. Media</b>	<b>39</b>
<b>Addendum - Community Outreach Plan for the Environmental Management Disposal Facility</b>	<b>43</b>

# Acronyms and Abbreviations

To make it easy for you to read this document, we are using only a few acronyms and abbreviations. They are:

<b>AR</b>	Administrative Record
<b>CERCLA</b>	Comprehensive Environmental Response, Compensation, and Liability Act of 1980
<b>DOE</b>	U.S. Department of Energy
<b>EM</b>	Environmental Management
<b>EPA</b>	Environmental Protection Agency
<b>ETTP</b>	East Tennessee Technology Park
<b>FFA</b>	Federal Facility Agreement
<b>NEPA</b>	National Environmental Policy Act
<b>NPL</b>	National Priorities List
<b>OREM</b>	Oak Ridge Office of Environmental Management
<b>ORNL</b>	Oak Ridge National Laboratory
<b>ORR</b>	Oak Ridge Reservation
<b>ORSSAB</b>	Oak Ridge Site Specific Advisory Board
<b>RCRA</b>	Resource Conservation and Recovery Act
<b>ROD</b>	Record of Decision

## World Wide Web Resources (*access available at the DOE Information Center*)

DOE Oak Ridge Office of Environmental Management: [www.energy.gov/orem](http://www.energy.gov/orem)

DOE Information Center: [www.oakridge.doe.gov/info\\_cntr](http://www.oakridge.doe.gov/info_cntr)

ORSSAB home page: [www.energy.gov/orssab](http://www.energy.gov/orssab)

DOE Headquarters: [www.energy.gov](http://www.energy.gov)

DOE Headquarters Environmental Management: [www.energy.gov/em](http://www.energy.gov/em)

U.S. EPA Region 4: [www.epa.gov/region4](http://www.epa.gov/region4)

TDEC: [www.tn.gov/environment](http://www.tn.gov/environment)

OpenNet: [www.osti.gov/opennet](http://www.osti.gov/opennet)

Federal Facility Agreement: [http://www.ucor.com/ettp\\_ffa.html](http://www.ucor.com/ettp_ffa.html)

Toxic Release Inventory: [www.epa.gov/tri](http://www.epa.gov/tri)

# Executive Summary

This document describes public involvement associated with activities performed by the U.S. Department of Energy's Oak Ridge Office of Environmental Management (OREM) under the Comprehensive Environmental Response, Compensation, and Liability Act (CERCLA). OREM, the U.S. Environmental Protection Agency (EPA), and the Tennessee Department of Environment and Conservation (TDEC) are committed to fostering meaningful public involvement in all aspects of environmental remediation decision-making.

You, as a member of the public, are entitled and encouraged to participate in our decision-making processes related to the cleanup of the Oak Ridge National Priorities List (NPL) site. Effective public involvement and good community relations rest on a foundation of positive relationships, and our managers and staff seek to build and nurture these relationships.

We provide a wide variety of methods to provide input—ranging from informal conversations to electronic communication, scheduled meetings and workshops, legally required hearings, and stakeholder advisory groups. These venues provide residents and stakeholders the opportunity to share their views and influence decisions, and we actively seek, consider, and incorporate or otherwise respond to the input we receive in a timely manner.

We keep the public informed of Environmental Management (EM)-related work and activities through various methods, including:

- *Cleanup Progress: Annual Report to the Oak Ridge Regional Community*
- Blogs and news releases on the OREM website
- Stories in the national EM Update Newsletter
- Posts to DOE Oak Ridge's Facebook and Twitter accounts
- Public information sessions and public meetings
- Oak Ridge Site Specific Advisory Board's quarterly Advocate newsletter
- Booths at regional conferences and special events.

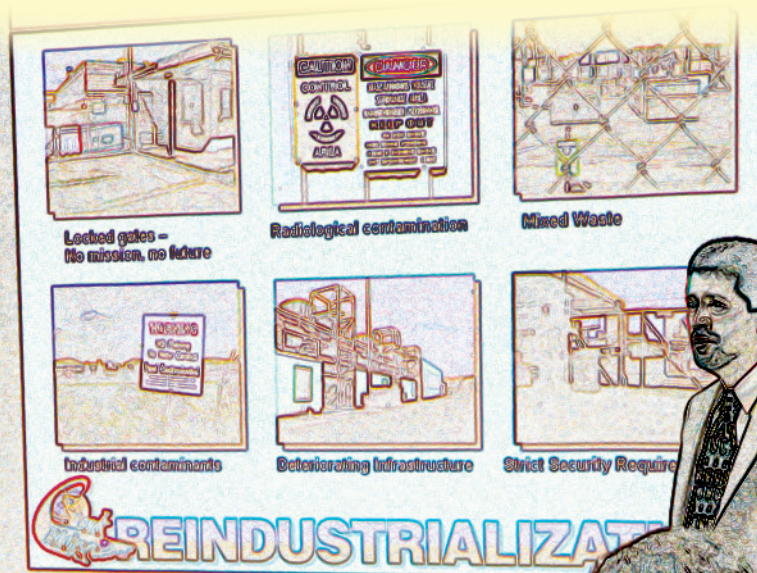
The goals of the OREM public involvement program are:

- To identify stakeholders, consider public input, and incorporate or otherwise respond to the views of stakeholders in making decisions.
- To inform and empower stakeholders to participate in CERCLA decision-making processes. These processes will be open, understandable, and consistent. Managers will define clear access points for public input from the earliest stages of a decision process, and they will provide adequate time for stakeholders to participate.
- To solicit feedback on its public involvement efforts.
- To provide access on all available information concerning the administrative records and cleanup initiatives being considered or decided. Additionally, OREM will provide a location where the public can ask questions (DOE Information Center).

Cleanup activities are conducted as part of a Federal Facility Agreement, a legally binding interagency (DOE, EPA, and TDEC) agreement to establish timetables, procedures, and documentation for remediation of the Oak Ridge Reservation.









# Getting Involved

## Chapter 1

**T**his Public Involvement Plan is prepared and published by OREM to communicate to you, as a member of the public, the opportunities available to participate in decisions and information exchanges regarding remediation of contaminated areas on the Oak Ridge Reservation (ORR). We are committed to public participation in the decision-making process, as detailed in our Public Participation and Community Relations Policy (see Appendix A).

### Why Should You Be Involved?

Sharing your concerns, opinions, and perspectives on environmental remediation provides OREM valuable perspective and fosters better and more complete decision-making. We constantly work to provide access to environmental data, project updates, and decision-makers, giving you the tools you need to participate in environmental decision-making.



### What Is In This Plan?

This plan provides you with information about EM Comprehensive Environmental Response, Compensation, and Liability Act of 1980 (CERCLA) remediation activities planned on the ORR, how that information is distributed, and where you can find and access it. It describes the role of the public in environmental remediation and how you can be involved. The plan also provides helpful contact information for relevant government agencies and local stakeholder groups involved in OREM's cleanup work.

It is important to note that this plan only addresses issues regarding legacy waste (waste generated prior to January 2000). It does not address current waste generation from DOE mission-related operations or technology development programs, identified as "newly generated waste." Although addressing those materials is an integral part of the EM program, those activities are not covered by CERCLA or included in the Federal Facility Agreement (FFA).

### How can you learn more about Environmental Management?

One of the best ways to increase your understanding about cleanup activities and hear other stakeholders' views is through attending public meetings. One of the best venues is the Oak Ridge Site Specific Advisory Board (ORSSAB). The board is composed of up to 22 members that are chosen to reflect the diversity of gender, race, occupation, and interests of persons living near the ORR. Their monthly board and committee meetings are open to the public, and they discuss a new topic in each session.

You can also learn about the latest projects and developments through OREM's online presence. We are active on our website [www.energy.gov/orem](http://www.energy.gov/orem) and on social media. Search for the DOE Oak Ridge Office on Facebook or @OakRidgeOffice on Twitter.

## Who is a stakeholder?

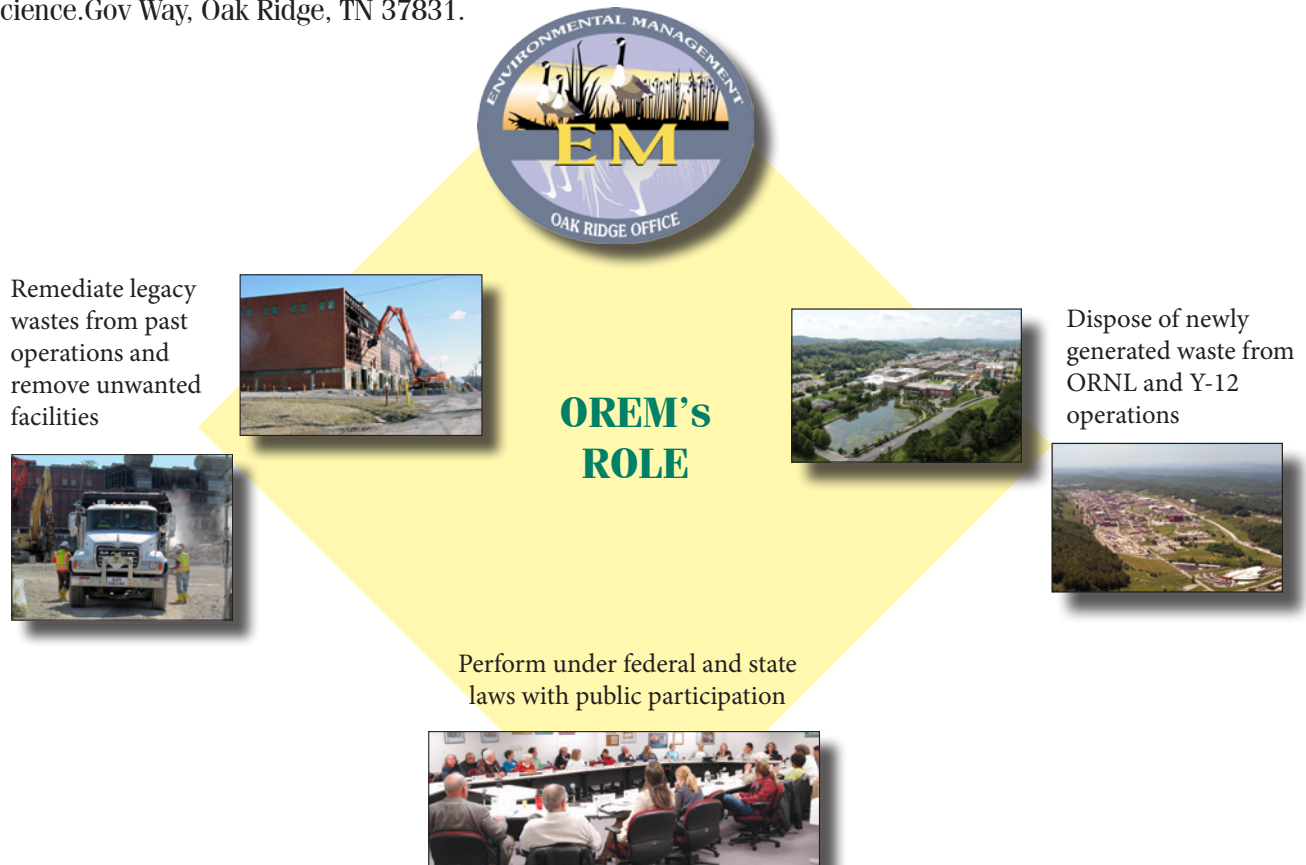
You are. If you are a local resident or reading this plan, you have expressed or have an interest in OREM's activities and hold a stake in its decisions. Stakeholders may vary and offer different views, values, and concerns. Whether your primary interest is jobs, a cleaner environment, or careful stewardship of tax dollars, we want and welcome your input.

## How can you make your voice heard?

It's easy to get involved. You can submit letters or emails, speak at public meetings, join or attend meetings of the ORSSAB, or even talk informally with OREM employees. You may contact the Oak Ridge DOE Community Relations contact: Ben Williams at (865) 574-4912 or at 1-800-382-6938 option 2, e-mail [Ben.Williams@orem.doe.gov](mailto:Ben.Williams@orem.doe.gov); or the OREM federal contact for the ORSSAB: Melyssa Noe at (865) 241-3315 or 1-800-382-6938 option 5, e-mail [Melyssa.Noe@orem.doe.gov](mailto:Melyssa.Noe@orem.doe.gov).

## How do you find out about OREM environmental decisions?

OREM announces its environmental decision proposals through various avenues, including, news releases and public notices in newspapers. Decision proposals are typically released well ahead to allow for public comment before final remedy selection. Additionally, a list of OREM's upcoming and projected projects for the next three years is available at [www.ucor.com/\\_docs/ffa/appendices/appende.pdf](http://www.ucor.com/_docs/ffa/appendices/appende.pdf). A paper copy of the FFA document that lists the upcoming projects is also available at the DOE Information Center, located at 1 Science.Gov Way, Oak Ridge, TN 37831.



# Understanding the CERCLA Process

## Chapter 2

**T**he Environmental Management program is responsible for numerous projects that clean up or stabilize the contamination remaining from more than 50 years of energy research and weapons production during the Manhattan Project and Cold War. Due to the site's contamination, the ORR was placed on the EPA National Priorities List (NPL) in 1989. The NPL is a comprehensive list of sites that have been found to pose a sufficient threat to human health and/or the environment to warrant cleanup under CERCLA. At federal NPL sites, regulatory agencies oversee the decision-making process and remediation. Regulatory authority and oversight of the ORR are the responsibility of EPA Region 4 and TDEC. Local government and the public play important, yet less formal, roles by commenting on CERCLA documents, participating in public meetings, and taking political action.

## The CERCLA Process

**C**ongress passed the Comprehensive Environmental Response, Compensation, and Liability Act of 1980 (CERCLA, also known as "Superfund") in response to a growing national concern about the release of hazardous substances from abandoned waste sites. Under CERCLA, Congress gave the federal government broad authority to regulate hazardous substances, to respond to hazardous substance emergencies, and to develop long-term solutions for the nation's most serious hazardous waste problems.

The primary steps in CERCLA projects are remedial investigations, feasibility studies, proposed plans, records of decision, and remedial actions (each are described in more detail in the table below). The remedial investigation and feasibility study process determines the nature and extent of contamination and evaluates remediation alternatives. OREM uses a risk-based prioritization method for determining the sequence of work. Risk-based prioritization aims to:

- Mitigate immediate on-site and off-site risks;
- Reduce further migration of contaminants off-site;
- Address sources of off-site surface water and groundwater contamination;
- Address remaining on-site contamination; and
- Address decontamination and demolition of facilities.

Along with these risk-based prioritization criteria, OREM also considers other factors such as mission support, mortgage reduction, release of land,

continuity of projects, and existing enforceable agreements. From these alternatives, one is selected as the preferred alternative, based on the following CERCLA criteria:

- Overall protection of human health and environment;
- Compliance with regulations;
- Long-term effectiveness and permanence;
- Reduction of toxicity, mobility, or volume;
- Short-term effectiveness;
- Implementability;
- Cost;
- Regulatory acceptance; and
- Community acceptance.

The preferred alternative and the rationale for its selection are summarized in a Proposed Plan. The other alternatives are also listed and compared to the preferred alternative. After receiving approval on the Proposed Plan from EPA and TDEC, OREM will release the document publicly for comments and feedback. OREM will respond to all significant oral or written comments, criticisms, and new data it receives. The selected alternative will be documented in a Record of Decision (ROD). The ROD is a key milestone in the CERCLA process because it documents a legally binding decision that cannot be changed without following specific procedures, including public review. The ROD also provides the technical basis for the cleanup decision, and it includes public and regulator comments and the OREM responses to those comments in a Responsiveness Summary.



Following the ROD, OREM prepares a Remedial Design Report/Remedial Action Work Plan to implement remediation activities. When all of the required remediation work has been completed, OREM issues a Remedial Action Report summarizing the accomplishments and results of field construction and documents any remaining monitoring activities and/or institutional controls that must be maintained. Many documents may be prepared for a single Record of Decision that includes multiple alternatives. Under CERCLA, only the Proposed Plan must be advertised and is subject to public review and comment. However, to enhance public involvement, OREM regularly provides other pre- and post-decision documents for public review at the DOE Information

Center. These pre-decision documents constitute the Administrative Record for each remediation decision on the ORR. The Administrative Record is closed with the signing of the ROD. The stages when the public is invited to provide input during the CERCLA process are described in the following table and in Appendix C. However, community members can submit inquiries or concerns about cleanup projects at any time by contacting the DOE Oak Ridge Community Relations contact at Ben.Williams@orem.doe.gov or by mail at P.O. Box 2001, Oak Ridge, TN 37831. For any EPA questions or inquiries, you may contact EPA's Region 4 (Atlanta) Community Relations contact L'Tonya Spencer by email at Spencer.Latonya@epa.gov or by phone at (404) 562-8628

## Public Involvement Activities in the CERCLA Process

CERCLA Activity	Description	Public Involvement
<b>Remedial Actions</b>		
<b>Remedial Investigation</b>	Data collection to characterize the nature and extent of contamination	OREM notifies the public that the Administrative Record File for the project has been opened and is available for public review.
<b>Feasibility Study</b>	Looks in detail at the range of technologies and alternatives to remediate any contaminated areas found during Remedial Investigation; often combined into one document with the Remedial Investigation	OREM may conduct a meeting or workshop to present the information from the Remedial Investigation/ Feasibility Study to the public, but such a meeting is not required by law or regulation.
<b>Proposed Plan</b>	Selects a preferred alternative or combination of alternatives based on information contained in the Remedial Investigation/Feasibility Study	Public comment period required following FFA party approval; public meeting is conducted during comment period to explain preferred alternative and to take comments. Public notified through public notices in area newspapers and DOE publications.
<b>Record of Decision</b>	Documents selection of a remedy and authorizes work to proceed	Public notified of availability; contains responsiveness summary of Proposed Plan comments.
<b>Remedial Design</b>	Design and detailed work plan of remedial action to be taken (examples: groundwater treatment systems or caps for burial grounds)	Becomes part of the Post-Decision Record File, where it may be accessed by the public at the DOE Information Center.
<b>Remedial Action</b>	Actual field work as directed by the Remedial Action Work Plan	Becomes part of the Post-Decision Record File, where it may be accessed by the public.
<b>Remedial Action Report or Phased Construction Completion Report</b>	Documents the actual work as performed and the maintenance and monitoring requirements to ensure the effectiveness of remediation	Becomes part of the Post Decision Record File, where it may be accessed by the public.

CERCLA Activity	Description	Public Involvement
<b>Land Use Control</b>	Details the controls in place to protect people and the environment from exposure to contaminants	Following completion of the remedial activities, a notice and fact sheet will be made available concerning contaminants left in place, location, and controls.
<b>Five-Year Review</b>	Assesses the progress of ongoing projects and the effectiveness of completed remedial actions; identifies actions to correct any problems found (Remediation Effectiveness Report assesses the effectiveness of completed remedial actions annually)	OREM has committed to conducting a range of public involvement activities in conjunction with five-year reviews. These may include public meetings, fact sheets, and other activities.
<b>Major FFA Modification</b>	Any change to the Agreement can be determined Major by one of the Parties	Upon final approval by the FFA Parties to a Major modification, the public will be notified. Public comments will be responded to by the Parties.
<b>Removal Actions</b>		
<b>Engineering Evaluation/Cost Analysis (EE/CA)</b>	Defines the issue and details that the planned removal action requires. Similar to the information contained in a Proposed Plan for a remedial action.	An EE/CA is developed for a non-time-critical removal action. They are provided for public review prior to the lead agency approval of the Action Memorandum. The comment period is 30 days.
<b>Action Memorandum</b>	Defines the work to be performed; similar to the ROD for Remedial Actions but only signed by OREM.	<p><b>Non-time-critical Removal Actions:</b> signed following the public review period of the EE/CA</p> <p><b>Time-critical Removal Action:</b> Action Memorandum is developed and signed by OREM and the public is provided a review period prior to work being initiated</p> <p>Emergency Removal Action: Action Memorandum is developed and signed by OREM during the initiation of work. The public is notified of the availability of the Action Memorandum.</p>
<b>Removal Action Report</b>	Documents the actual work as performed and the maintenance and monitoring requirements to ensure the effectiveness of remediation	Becomes part of the Post-Decision Record File, where it may be accessed by the public.

In the table above, readers will notice two headings—"Remedial Actions" and "Removal Actions." Remedial Actions are part of the CERCLA ROD process, and they are led by the EPA and TDEC. Removal Actions are led by OREM. However, when complete, the areas addressed must still be addressed in the future in a ROD.

## The Federal Facility Agreement

CERCLA requires a legally binding interagency agreement among agencies (in this case DOE, EPA, and TDEC) to establish timetables, procedures, and documentation for cleanup of federal sites on the NPL. The Oak Ridge NPL site covers the areas where contamination exists that pose a risk to the environment or human health.

The FFA governs removal actions, interim cleanup actions, and final cleanup activities. It helps ensure that the environmental impacts associated with past and present activities are thoroughly investigated and that OREM takes appropriate remedial actions or corrective measures to protect human health and the environment.

After two years of negotiations by DOE, EPA, and TDEC, the FFA for the ORR was implemented on January 1, 1992. This agreement established the procedural framework and schedule for developing, implementing, and monitoring response actions. Appendix C to the FFA lists all of the inactive sites/areas that will be investigated, and possibly remediated, under CERCLA. Milestones (deadlines) for completion of CERCLA documents are available in Appendix E. Appendix C is updated annually, and Appendix E is formally renegotiated annually once DOE has received its annual funding allocation. Project milestone modifications to Appendix E can be made, as necessary, when the three parties approve the changes.

Two appendixes to the FFA serve as a resource for stakeholders in looking ahead. Appendix E provides the projected enforceable milestones agreed upon by DOE, EPA, and TDEC for the current and the next two fiscal years. Appendix J provides information on unenforceable, proposed milestones for the fiscal years beyond that. Both appendixes are kept updated online at [www.uncor.com/ettp\\_ffa.html](http://www.uncor.com/ettp_ffa.html) and can provide information about upcoming CERCLA activities on the ORR.



## The Administrative Record

Section 113 of CERCLA requires DOE to create and maintain an Administrative Record for each response action (remedial or removal) on the ORR. The AR is the official body of documents that forms the basis for the selection of a particular response action. It contains documentation such as remedial investigation work plans, remedial investigation reports, feasibility studies, proposed plans, RODs, engineering evaluations/cost analyses, action memoranda, DOE correspondence, EPA and TDEC correspondence, and other material used in the decision-making process.

Two terms that are commonly interchanged, actually differ in meaning: AR and AR file. The AR file is an active file where documentation is added as the response action progresses. Upon signature of the ROD, the AR file is closed and becomes the AR. All post-ROD documents are placed in a post-decision file that is associated with the Administrative Record.

CERCLA requires the lead agency to make the AR file available for public inspection at or near the CERCLA site. Copies of the ORR AR files and AR are available for public review at the DOE Information Center. DOE publishes notices in local newspapers to announce the availability of new AR files and to invite public review at certain phases of the decision process. Public review opportunities may also include public meetings. Public notices regarding opportunities for public involvement and significant comments from the public on a particular response action are included in the AR to document public involvement in the CERCLA process.

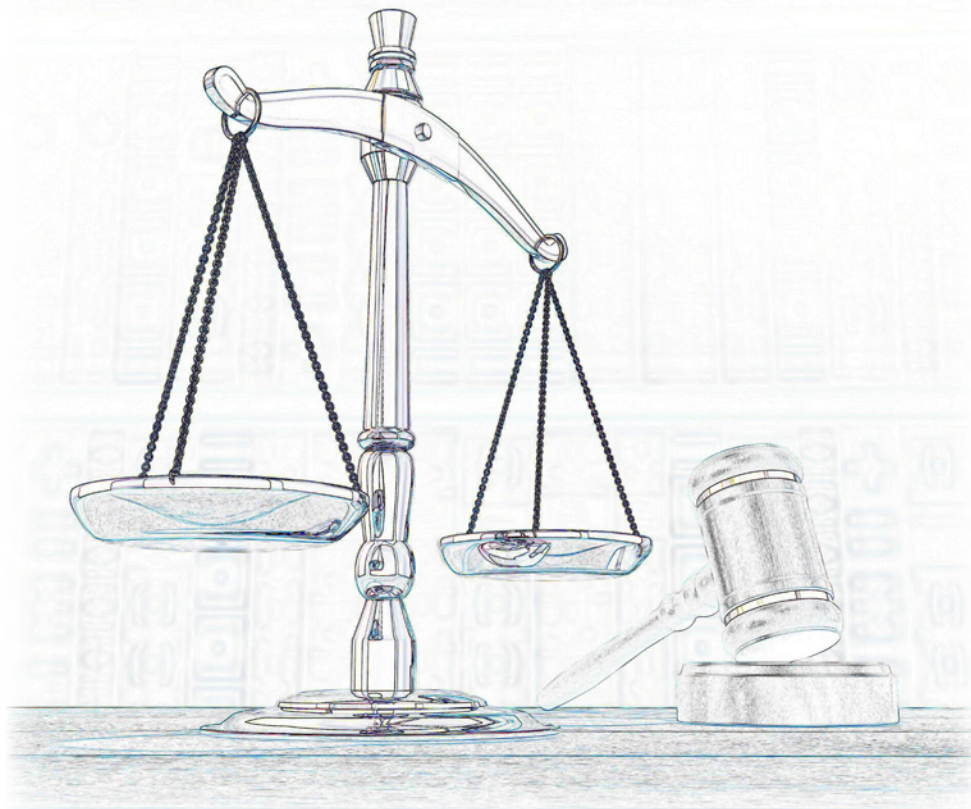


DOE shall preserve, during the duration of the FFA and for a minimum of 10 years after the termination and satisfaction of the FFA, the complete AR, post-ROD, primary and secondary documents, and reports required by the FFA. After this 10-year period, DOE shall notify EPA and TDEC at least 90 days prior to the destruction of any such records or documents. DOE will at that time also notify the public of its intent.

## Other Environmental Laws and Directives

Although CERCLA principally governs EM cleanup activities on the ORR, other federal environmental laws and directives play important roles (see **Appendix B**), including:

- Clean Air Act;
- Clean Water Act;
- National Environmental Policy Act (NEPA);
- Resource Conservation and Recovery Act (RCRA);
- Executive Order 12898, “Federal Actions To Address Environmental Justice in Minority Populations and Low-Income Populations”;
- • Emergency Planning and Community Right-to-Know Act (DOE-OREM’s emergency planning information is available at <http://science.energy.gov/isc/emergency-information/>);
- Policy on Decommissioning DOE Facilities Under CERCLA; and
- Health and safety plans for individual projects, which meet OSHA requirements

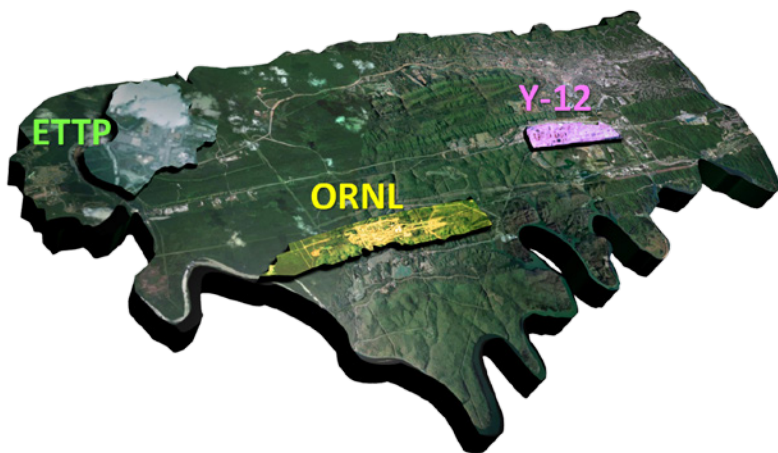


# Cleaning Up the Oak Ridge Reservation

## Chapter 3

**O**ak Ridge, Tennessee, is home to one of DOE's largest and most diverse sites. The site dates back to 1942 as part of the Manhattan Project. Engineers developed three distinct campuses within the ORR, and each pursued a different technology to enrich uranium. In the decades since, each of these campuses—the Oak Ridge National Laboratory (ORNL), Y-12 National Security Complex (Y-12), and East Tennessee Technology Park (ETTP)—evolved and conducted different missions for DOE. Scientists and engineers purified isotopes, conducted research, built weapons, and created environmental legacies that OREM has worked to clean and remove since 1989.

Today, OREM is addressing the extensive environmental contamination resulting from those early missions. Great progress is happening at ETTP, where OREM is pursuing Vision 2016 and Vision 2020. The goal is to remove all five of the former gaseous diffusion uranium enrichment facilities by 2016 and complete cleanup of the site by 2020. As the last uranium enrichment building falls in 2016, it will mark the first-ever demolition and cleanup of a gaseous diffusion complex anywhere. Oak Ridge's cleanup program is on a clear path to clean and transfer ETTP to become a privately-owned and operated industrial park that bolsters the regional economy.



With the end of cleanup in sight at ETTP, OREM is developing plans and laying the foundation to begin major cleanup efforts at Y-12 and ORNL. Unlike ETTP, these sites have crucial ongoing DOE missions and work forces that are advancing national security, scientific research, and industrial projects for our nation.

## Reservation Landscape and Challenges

The ORR, which spans more than 33,000 acres, includes three major campuses—ETTP, ORNL, and Y-12. Together, they occupy about 30 percent of the ORR. The remainder is designated as a National Environmental Research Park, established in 1980, to provide protected land for environmental science research and education, and to demonstrate that energy technology development can coexist with a quality environment.

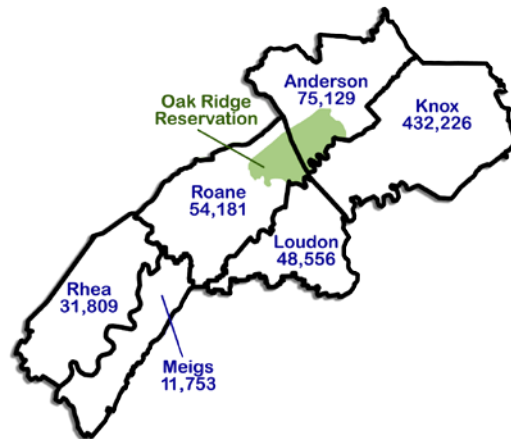
All of the ORR lies within Anderson and Roane counties, and the property is within the city limits of Oak Ridge. The Clinch River forms the southern and western boundaries of the ORR. The ORR is, for the most part, separated from the Oak Ridge commercial and residential areas. A few private commercial industries exist within the ORR at ETTP, along Bethel Valley Road and Bear Creek Road.

Since the early 1940s, the ORR has been the site of nuclear research and vital national security missions. These activities left a legacy of radioactive and chemical wastes that require management and/or disposal. These materials that are present in burial grounds, settlement ponds, seepage pits and trenches, inactive

tanks, abandoned underground pipelines, and surplus facilities have contaminated soils, groundwater, and surface water. Abundant rainfall (annual average of 55 inches) and high water tables (e.g., 0 to 20 feet below the surface) accelerate leaching of contaminants which can result in contaminated soil, surface water, sediments, and groundwater. A complex geology also provides for ready movement of groundwater on many parts of the ORR.

## Proximity to Local Populations

Populations of the counties, according to the 2010 U.S. Census, nearest the ORR:



The nearest towns, other than the city of Oak Ridge, are Clinton, Farragut, Harriman, Kingston, Lenoir City, and Oliver Springs. Knoxville, the nearest metropolitan center, is about 20 miles to the southeast.

## Cleanup Strategy and Approach

To consolidate investigation and remediation of environmental contamination, the contaminated areas of the ORR have been divided into five large tracts of land roughly equivalent to major hydrologic watersheds. DOE, EPA, and TDEC decided that a comprehensive watershed approach would be most effective for remediation planning. Based on the watershed approach, OREM has developed a portfolio of projects designed to complete remediation at ETTP, ORNL, and Y-12. All three portfolios are integrated into a single plan for the ORR that balances risks across all regulator, stakeholder, and mission priorities.

This approach reflects an understanding of each site's (ETTP, ORNL, and Y-12) specific geologic setting and potential contaminant migration pathways. It provides a logical grouping of work and a meaningful and measurable method for managing areas of contamination; tracking contaminants of concern; analyzing environmental effects; making decisions; and defining projects within each site. Based on available resources (e.g., funding, workers, disposal capacities, etc.) and further analysis, the cleanup scope for all three sites is then integrated and prioritized.

Many of the risks at ETTP have already been mitigated, and the focus is now on demolishing legacy facilities and reducing lifecycle costs. Delays in completing the work increase the demolition cost due to building deterioration as well as infrastructure; surveillance and maintenance; security; and landlord costs for every year the cleanup is delayed. At Y-12, mercury from on-site sources continues to migrate into Upper East Fork Poplar Creek, which enters public water at the site boundary. This poses a high environmental risk, and it is the driver for completing the near-term work to reduce mercury in surface waters at Y-12 through construction of an onsite treatment facility. ORNL's greatest focus remains the removal of legacy nuclear materials and onsite waste. OREM has made some progress dispositioning U-233 canisters and on-site stored transuranic waste; however, these projects are not yet complete and remain the highest nuclear/radiological risk at ORNL.



# Public Involvement Opportunities

## Chapter 4

**O**REM continues to study and learn more about its sites and new remediation and waste-handling methods. As a result, the Public Involvement Program must keep pace with the changing needs for different types of environmental decision-making. As the program continues to evolve, you will have new ways to add your voice to CERCLA decision-making.

Although many of the formal CERCLA decision documents are now in place, a number of opportunities remain for public involvement with OREM (see Appendix C for more details).

OREM recognizes that long-term controls are critical for ensuring continued protection of human health and the environment and is taking steps to develop policies, guidance, and procedures for planning and implementing long-term stewardship. The success of long-term stewardship will depend on a strong, open partnership among OREM, state and local government, other federal agencies, and the public. Also at the request of the ORSSAB, OREM has agreed to provide public notification of any agreement among DOE, EPA, and TDEC to destroy CERCLA documents.

## Participation in Regulatory Reviews

### CERCLA Decisions

The National Contingency Plan and CERCLA statutes were written so any potentially impacted stakeholders in the communities surrounding an FFA-identified contamination area would be informed about concerns and the proposed remedies. These statutes also call for active public involvement in making the selected remediation decision. To this end, the public is given access to the Remedial Investigation report that details the contamination sources, contamination locations, and the extent and risk to human health and the environment. The public is also given access to the Feasibility Study, which identifies a range of cleanup alternatives to address the contamination. The Feasibility Study compares the cost, effectiveness, and the ability to implement the cleanup alternatives. Once OREM, EPA, and TDEC have agreed which alternative is preferable, it is documented in the Proposed Plan. Then, OREM announces a review period to gather input from the public and hosts a meeting to assist the public in understanding the nature of the problems, the range of alternatives, and the proposed approach. Following the review period, public comments are incorporated into the subsequent ROD that is signed by OREM, EPA, and TDEC for implementation.

Similar to the process for the FFA remediation activities, OREM's plans and activities to remove contaminated media are made available to the public for review and comment. The Engineering Evaluation/ Cost Analysis is provided for public review. This document presents details of the contamination and the proposed alternative selected to address the contamination. The DOE-approved preferred approach is documented in an Action Memorandum. Any substantial public concerns are evaluated and considered in the performance of the action. All removal activities will be addressed in future RODs for additional remediation if necessary.

### Remediation Effectiveness Reports

The annual Remediation Effectiveness Report for the ORR contains descriptions of remedial actions and monitoring requirements, a summary and analysis of monitoring results, and recommendations on revisions to monitoring. These reports are issued for public review, and they are available at the DOE Information Center. Previous reports have been the subject of special presentations to the ORSSAB, which provides comments and recommendations to OREM. They recommended a format change that helped make future editions more understandable and reader-friendly.

## CERCLA Five-Year Review

Every five years, the CERCLA Five-Year Review Report is generated for all of the completed and ongoing remediation sites to evaluate the level of protection the remediation has and will provide. The report is a comprehensive culmination of the cleanup actions taken and the associated monitoring data generated during the previous five-year period. The purposes of the review are to determine whether the remedies undertaken protect human health and the environment, and to evaluate implementation and performance of those remedies. The review may identify actions to correct problems found. Once the changes are approved by OREM, EPA, and TDEC, the changes are implemented.

Opportunities to participate in CERCLA Five-Year Reviews may include:

- Public notice announcing the availability of CERCLA five-year review documents to interested citizens, community groups, and local government.
- Hosting a public meeting to provide stakeholders with information about remedial activities subject to the five-year review process, explain the five-year review process, and gather community issues related to future reviews.
- Invitations to stakeholders to participate in site visits.
- Evaluate public recommendations and comments that will, if they have merit, be proposed as changes to decision documents (ROD, Remedial Action Report) for approval by EPA and TDEC. Any approved changes will be reflected in subsequent five-year review documents. Previous reviews for the Oak Ridge NPL Site were conducted in 1996, 2001, 2006, and 2011.

Since DOE began environmental work on the ORR in the late 1980s, it has continuously turned to stakeholders for input. In the early stages of the Environmental Management program, OREM usually solicited opinions by mail or in public meetings.

Although this approach is still used, it is now augmented with the following more specific efforts:

- DOE sponsors an independent citizens board, called the ORSSAB, to provide advice and recommendations on OREM activities.
- Workshops are scheduled for many projects to provide a forum for an open exchange of information and ideas.
- Citizen working groups are occasionally established for specific projects and issues to provide focused input.
- The DOE Information Center provides resources for in-depth research about CERCLA and NEPA waste management activities.

## Long-Term Stewardship

Long-term stewardship is an area that presents the greatest relevance to local communities and residents—making it a key area for public involvement and input. In some cases, stewardship continues even after cleanup of a site is complete. Long-term stewardship ensures that remediation remains effective for an extended, or possibly indefinite, time until any residual hazards are reduced to a level that permits unrestricted use and unlimited access. Long-term stewardship starts incrementally when each remediation activity is complete. However, the planning for long-term stewardship is incorporated into remedial decision-making. Cleanup goals and remediation recommendations made by key stakeholder groups, such as the End Use Working Group, are factored into remediation decisions. The recommendations documented by these groups are held as part of the AR Compendium.

### What is *Long-Term Stewardship*

*As defined by the End Use Working Group Stewardship Committee, stewardship is “Acceptance of the responsibility and the implementation of activities necessary to maintain long-term protection of human health and of the environment from hazards posed by residual radioactive and chemically hazardous materials.”*

There are three major reasons why planning for long-term stewardship is needed for the ORR.

- Hazards will remain on and off of the ORR after remediation. For example, Melton Valley contains several capped waste areas. The hazards include wastes that have been left in place. Without long-term stewardship, these hazards could pose risks to human health and the environment.
- Regulations mandate monitoring, inspections, and other controls. Because the duration of regulatory requirements may be shorter than the duration of potential risk, future measures of protection may need to be considered.
- Physical controls, such as signs and fencing, must be maintained and monitored.

OREM recognizes that long-term controls are critical for ensuring the continued protection of human health and the environment, and it is taking steps to develop policies, guidance, and procedures for planning and implementing long-term stewardship. The success of long-term stewardship depends on a strong, open partnership among OREM, state and local government, other federal agencies, and the public. Also at the request of the ORSSAB, OREM has agreed to provide public notification of any agreement among DOE, EPA, and TDEC to destroy CERCLA documents.

### **Key Challenges of Long-Term Stewardship**

A better understanding of the challenges OREM faces allows individuals and organizations, within and outside DOE, to make more informed decisions that shape future long-term stewardship activities. The key challenges include:

- Incorporating long-term stewardship considerations into cleanup decisions;
- Ensuring the continued effectiveness of long-term stewardship if property ownership changes;
- Ensuring public access to information about residual hazards;
- Ensuring reliable and sufficient funding and resources to maintain remedies;
- Maintaining continued partnerships with state and local governments;
- Developing mechanisms to promote the sustainability of long-term stewardship; and
- Building the concept of “pollution prevention” and life cycle management into the planning processes for new missions and facilities.

When remediation is complete on the Oak Ridge NPL Site, the ORR will be capable of supporting a variety of industrial uses. Use restrictions are already in place where contaminated groundwater has migrated off-site (e.g., into Union Valley on the east side of the Y-12 Complex, into the Clinch River and Lower Watts Bar reservoir, and into the city business and residential areas via the Lower East Fork Poplar Creek). Specific stewardship requirements and duration will be determined as remediation is completed and end-state decisions are finalized. Land survey information will be provided to the appropriate counties designating where contamination remains following completion of cleanup activities.

### **Public Involvement in Long-Term Stewardship**

From 1997 to 1999, the ORSSAB sponsored the End Use Working Group, the End Use Working Group Stewardship Committee, and the Stewardship Working Group. These groups of Oak Ridge stakeholders included representation from various groups, oversight organizations and agencies, City and County governments, and individuals. Three documents were published dealing with the issues of end uses for contaminated areas and long-term stewardship. A national stewardship workshop for stakeholders was hosted. Largely through the efforts of these stakeholders, Oak Ridge became the recognized leader on the subject of long-term stewardship.

The primary concern of the Stewardship Working Group, convened in February 1999, was what happens to the Reservation in 100 years, 200 years, and even 500 years, especially if OREM no longer exists. Who would know the location of waste burial sites; what restrictions on land use need to be in place; what areas might remain unsafe for swimming, fishing, or residential dwelling; or where might groundwater be unsafe? Concerns exist that the records might be destroyed or rendered inaccessible. If this happens, people may



forget the legacy of the early nuclear era and unknowingly be exposed to remaining health and environmental hazards.

The Stewardship Working Group built on the work of the Stewardship Committee of the ORR End Use Working Group. The Stewardship Committee published one of the first works on stewardship in July 1998: *The Oak Ridge Reservation Stakeholder Report on Stewardship*. Members of that group, many of whom continued on the Stewardship Working Group, realized, as they researched the issue, that cleaning up the Reservation to a pristine state was not a reasonable expectation for both financial and technological reasons, and that some areas of the Reservation could never be completely cleaned. Hazardous and nuclear waste and contamination will remain in some places throughout the Reservation for thousands of years.

While the first stewardship report provided an overview of stewardship issues, the goals of the Stewardship Working Group were to publish a second stewardship document to address specific ORR challenges; to make recommendations regarding how long-term stewardship should be implemented; and to develop a list of stewards (individuals and agencies) to ensure that essential and appropriate information remained accessible and was passed on to succeeding generations. The primary issues were: Who are the stewards? How will long-term stewardship be financed? How will records be kept and maintained? What is the public's role regarding long-term stewardship?

Today, the ORSSAB EM/Stewardship Committee continues to work on crucial long-term stewardship issues. Major concerns include integration of long-term stewardship with remediation decisions, application of the Long-Term Stewardship Strategic Plan, and the development of a Long-Term Stewardship Implementation Plan. The committee also serves informally as a Citizens Board for Stewardship and will continue to do so until the ORSSAB completes its mission and is disbanded. At that time, it is anticipated that a formal Citizens Board for Stewardship will be constituted.



# Avenues of Communication

## Chapter 5

**T**he success of the public's involvement in the OREM CERCLA activities depends upon communication flowing both ways—from the public to OREM as well as from DOE to the public. Over the years, OREM has expanded the avenues it uses to inform the public about its activities and opportunities for involvement to include telephone hotlines, newspaper advertisements, newsletters, email correspondence, and websites. Opportunities for your involvement include citizen working groups, public meetings, workshops, public comment periods for CERCLA documents, and informal comments to OREM.

### Publications of Interest to Stakeholders

OREM continues to rely on many of the traditional means to provide the public with information—blogs, social media postings, newsletters, annual reports, fact sheets, newspaper notices, and transcripts of public meetings.

**Cleanup Progress** is published by OREM annually to keep stakeholders informed about EM Program activities on the ORR. Each issue spotlights current news, news about ORR projects, and a status report on activities and documentation associated with the EM activities. Copies of *Cleanup Progress* are made available at no cost at the DOE Information Center. An electronic version is also available at [www.energy.gov/orem/about-us/news](http://www.energy.gov/orem/about-us/news).

**EM fact sheets** provide a quick and easy way to gain a broad understanding of the numerous Environmental Management projects under way across the ORR. There are fact sheets that address Oak Ridge's three major Environmental Management cleanup sites. Others cover more generic topics, such as environmental laws and regulations and public involvement information sources. These fact sheets are available at no cost at the DOE Information Center, and they are available <http://www.energy.gov/orem/about-us/news>.

**Other DOE reports** are available at the DOE Information Center, including the Annual Site Environmental Report, Remediation Effectiveness Reports, and the CERCLA Five-Year Review. To be placed on the email distribution list for Cleanup Progress or other EM publications call 1-800-382-6938, option 2.

### EPA and TDEC Publications and Tools

A listing of EPA news releases, blogs, social media, and newsletters is available at: [www.epa.gov/newsroom](http://www.epa.gov/newsroom).

The TDEC DOE Oversight Office publishes the following annual documents (available at <https://tn.gov/environment/article/rem-oak-ridge-reports>):

- Environmental Monitoring Report
- Environmental Monitoring Plan
- Annual Status Report

The EPA offers a community involvement toolkit to help community members understand the resources that are available to them as they plan and implement community involvement activities at Superfund sites. It is available at: <https://www.epa.gov/superfund/community-involvement-tools-and-resources>.

### Stakeholder Group Publications

The following documents are available at the DOE Information Center:

**The Advocate** newsletter is published quarterly by the ORSSAB to inform local stakeholders about board

activities and maintain an ongoing dialogue with the community. The Advocate is available online at [www.energy.gov/orssab](http://www.energy.gov/orssab). Commercial or stakeholder organizations can receive ORSSAB publications and meeting notices electronically by emailing [Pete.Osborne@orem.doe.gov](mailto:Pete.Osborne@orem.doe.gov).

***Final Report of the End Use Working Group:*** This document outlines the process used by the End Use Working Group to make recommendations for end uses of contaminated areas on the ORR, describes these recommendations, and briefly describes the need for a long-term stewardship program for the Reservation.

***Oak Ridge Reservation Stakeholder Reports on Stewardship:*** These two reports describe the basic need for and elements of a long-term stewardship program, their application to the ORR, and the roles and responsibilities of stakeholders.

## Public Communication Methods

**Comment cards:** These cards are used to solicit your views and questions. They are available at public meetings and may be handed back to a Public Affairs staff member or mailed to the address provided on the card.

**Comment periods:** Comment periods vary in duration, but most last 30 days or more. A public meeting may be held during a comment period. Announcements for the comment period, which are advertised in the Oak Ridger and Roane County News newspapers, include information on where and how you can provide your input. New CERLCA documents that are available for public comment can be obtained at the DOE Information Center or its website at <https://doeic.science.energy.gov/recent.aspx>.

**Informal discussion:** OREM managers want to hear your views and answer any questions. DOE includes time for informal discussions before and after public meetings. You can also send emails to the Public Affairs Office ([Ben.Williams@orem.doe.gov](mailto:Ben.Williams@orem.doe.gov)) for email correspondence, and your question or concern will be routed to the appropriate contact.

**Public meetings and workshops:** Public meetings and workshops are help to share information and hear views on specific issues. The announcements for meetings provide the time, place, and contact information to gather additional information.

**ORSSAB:** The board is a citizen's panel that advises and develops recommendations for OREM. The ORSSAB holds monthly board and community meetings that are open to the public, where you can express your views or ask questions. If you are interested, you can also submit an application to join the board as a member.

**Public notices:** These notices announce public meetings, comment periods, or document publications. The advertisements appear in area newspapers, usually the Oak Ridger and Roane County News.

**Toll-free telephone number 1-800-382-6938:** OREM has set up a toll-free telephone number you may call to get more information about public meetings and other public involvement activities.

## Public Communication Resources

### Administrative Record

The DOE Information Center houses copies of a collection of documents OREM uses to make its final decisions on remediating ORR sites.



## **DOE Information Center**

A document center is located at 1 Science.gov Way, Oak Ridge, TN, that houses a copy of the official public AR and other environmental documents.

## **News releases and media advisories**

OREM regularly provides information to local newspapers, radio stations, and television stations about projects and ongoing activities. These, and other blog posts and updates, are available at [www.energy.gov/orem/about-us/news](http://www.energy.gov/orem/about-us/news).

## **Publications**

DOE publishes newsletters, fact sheets, and annual reports—which are all available at [www.energy.gov/orem/about-us/news](http://www.energy.gov/orem/about-us/news) or at the DOE Information Center.

## **DOE Information Center**

1 Science.gov Way  
Oak Ridge, TN 37830  
[www.oakridge.doe.gov/info\\_ctr](http://www.oakridge.doe.gov/info_ctr)  
Phone: (865) 241-4780  
Toll free: 1-800-382-6938, option 6

The DOE Information Center is well known to area stakeholders as a storehouse for documents related to CERCLA activities. The Information Center maintains copies of the AR, AR files, and the post-decision documents. These documents include Remedial Investigation/Feasibility Studies, Remedial Action or Removal Action Work Plans, Proposed Plans, and more. Other reports and publications are also available, such as the annual Cleanup Progress, Annual Site Environmental Report, Remediation Effectiveness Reports, and CERCLA



**DOE  
Information  
Center**



Five-Year Review. The center also serves as the meeting location for stakeholder groups, such as the ORSSAB. It is open Monday through Friday, 8 a.m. to 5 p.m.

## **Government Agencies and Stakeholder Organizations**

OREM shares the Oak Ridge environmental public involvement stage with state and local boards and agencies, and several citizen groups and organizations. These publicly funded groups and organizations hold meetings where citizen input is solicited. Local government boards that focus on the potential environmental effects of DOE activities include the City of Oak Ridge Environmental Quality Advisory Board and the Roane County Environmental Review Board. Both boards routinely examine OREM's environmental decisions.

### **Government Agencies**

EPA and TDEC are the two regulatory agencies that participate in OREM decisions on the ORR. The FFA for the ORR outlines the working relationship between OREM and the regulatory agencies. Appendix E of the FFA Agreement details the deadlines (current milestones) for ORR remediation documents.

#### **Tennessee Department of Environment and Conservation DOE Oversight Office**

---

Division of Remediation

761 Emory Valley Road

Oak Ridge, TN 37830-7072

Phone: (865) 481-0995

Fax: (865) 482-1835

Website: <https://tn.gov/environment/topic/rem-oak-ridge-reservation-clean-up>

The TDEC DOE Oversight Office works to ensure that the environmental effects associated with past and present activities at the ORR are thoroughly investigated and monitored. The primary objective of the division is to assure the citizens of Tennessee that their health, safety, and environment are being protected during Environmental Management and other ongoing activities at the ORR, and to assist in making cleanup decisions. TDEC publishes three annual reports: the TDEC DOE Oversight Office Status Report to the Public, the DOE Oversight Environmental Monitoring Plan, and the DOE Oversight Environmental Monitoring Report. The annual report and monitoring plan are available as downloadable, self-extracting Microsoft Word documents from the DOE Oversight webpage and all are available at no charge by calling the TDEC office at (865) 481-0995.

#### **U.S. Environmental Protection Agency**

---

61 Forsyth Street S.W.

Atlanta, GA 30303-3104

EPA Hotline: 1-800-241-1745

EPA Public Affairs Fax: (404) 562-8174

Website: [www.epa.gov/region4](http://www.epa.gov/region4)

EPA Region 4 is based in Atlanta, Georgia. Aside from its official reviews of DOE decision documents, EPA publishes a considerable amount of information on a broad range of topics. Its website is an excellent place to start. You can find environmental profiles by state, country, and territory using EPA databases. A comprehensive catalogue of current and archival EPA publications is available at [www.epa.gov/newsroom](http://www.epa.gov/newsroom).

#### **City of Oak Ridge**

---

200 South Tulane Ave.

Oak Ridge, TN 37830

Phone: (865) 425-3546

Website: [www.oakridgetn.gov](http://www.oakridgetn.gov)

## Stakeholder Organizations

### **Community Reuse Organization of East Tennessee**

---

1020 Commerce Park Drive, Suite L  
Oak Ridge, TN 37830  
Lawrence Young, President  
Phone: (865) 482-9890  
Website: <http://www.croet.com/>

The Community Reuse Organization of East Tennessee (CROET) is an economic development organization that was established in 1995 to assist the private sector in creating quality jobs in the region by using the underutilized land, facilities, equipment, personnel and technology available at DOE's Oak Ridge complex. CROET and its subsidiaries own, develop and manage over 300 acres of former DOE property at ETTP and the Oak Ridge Science & Technology Park.

### **East Tennessee Economic Council**

---

1201 Oak Ridge Turnpike, Suite 100  
Oak Ridge, Tennessee 37830  
Phone: (865) 483-4577  
Fax: (865) 482-0191  
Website: <http://eteconline.org/>

ETEC is an independent, regional, non-profit membership organization dedicated to supporting the federal government's missions in Oak Ridge, as well as encouraging new opportunities to fully utilize the highly-skilled talent, cutting-edge technologies and unique facilities that make up the ORR. ETEC still works in strong partnership with federal contractors, DOE and National Nuclear Security Administration representatives, state officials, small businesses, and other local economic development organizations to seek new ways to use federal investments in science and security to create prosperity, promote regional development, and explore opportunities for growth.

### **The Energy, Technology and Environmental Business Association**

---

P.O. Box 5483  
Oak Ridge, TN 37831  
Adrienne Diffin, Communication Specialist  
Phone: (865) 805-8364  
Website: [www.eteba.org/](http://www.eteba.org/)

The Energy, Technology and Environmental Business Association (ETEBA) is a non-profit trade association representing approximately 200 small, large and mid-sized companies that provide environmental, technology, energy, engineering, construction and related services to government and commercial clients. Their mission is to promote the success of its members by fostering market understanding, identifying business opportunities and advocating common interests.

Originally formed in 1989 as the Oak Ridge Waste Management Association, ETEBA has been a strong voice for the business community for more than 20 years. ETEBA provides networking opportunities; leads the Oak Ridge Business Safety Partnership to promote safety on the ORR, and educates members through regular informational updates and special forums.

## **The Environmental Quality Advisory Board**

---

City of Oak Ridge

P.O. Box 1

Oak Ridge, TN 37831-0001

Amy Fitzgerald, Government & Public Affairs

Phone: (865) 425-3550

Website: [www.cortn.org/eqab/](http://www.cortn.org/eqab/)

The Environmental Quality Advisory Board is a 12-member, citizen-volunteer, advisory board appointed by the Oak Ridge City Council to advise the Council on issues affecting environmental quality and natural resources in Oak Ridge. The board is supported by the City staff and meets on the first Thursday of each month at 7:30 p.m. in the Oak Ridge Municipal Building, 200 S. Tulane Ave., Oak Ridge.

## **Oak Ridge Site Specific Advisory Board**

---

P.O. Box 2001, EM-91

Oak Ridge, TN 37831

Phone: (865) 241-4583, 241-4584

Fax: (865) 241-6932

Website: [www.energy.gov/orssab](http://www.energy.gov/orssab)

The Oak Ridge Site Specific Advisory Board is a federally appointed citizen panel that provides advice and recommendations to DOE on its OREM Program. The group was formed in 1995 and is chartered under the Federal Advisory Committee Act, and it is funded by DOE-OREM

The board is dedicated to providing informed recommendations and advice to DOE-OREM regarding environmental restoration and waste management, as well as land use and economic development of contaminated areas. Recommendations regarding environmental justice, health and safety issues, and other subjects may be developed at the Board's discretion. The board is committed to reflecting the concerns of the communities affected by environmental management of the ORR and to serving as a communication link between the public and the relevant government agencies, including local governments.

The board is composed of up to 22 members that are chosen to reflect the diversity of gender, race, occupation, views, and interests of persons living near the Reservation. Members are appointed by DOE and serve on a voluntary basis, without compensation. Non-voting members include representatives from the OREM Office, EPA Region 4, and TDEC. These members advise the Board on their respective agency's policies and views. Non-voting student participants also serve on the board to represent the viewpoints and concerns of area youth.

The ORSSAB provides a number of avenues through which the public can learn and express views about OREM work. All meetings are open to the public, and they are announced in newspaper advertisements, the Federal Register, and through the board's website and Facebook page. Committee meetings, which are also open to the public, are held at the DOE Information Center. Board meetings are recorded and posted on its YouTube channel. The meetings are broadcast monthly on Oak Ridge channel 15, Lenoir City Charter cable channel 3, Knoxville Charter channel 6, and Comcast channel 12. Information is available by calling the board's support office. Information about membership on the board is available on the ORSSAB website.

**Roane County Environmental Review Board** 

---

200 E. Race St. #11

Kingston, TN 37763

Phone: (865) 376-2390

Website: <http://roanecountyttn.gov/county-commission/boards-and-commissions/environmental-review-board/>

The Roane County Environmental Review Board meets on the first Thursday of each month at 6 p.m. at the Roane County Courthouse. A meeting notice is published in the Roane County News in advance of each monthly meeting, and they are open to the public. The board was established in 1989, and it is comprised of eight general members, who serve overlapping three-year terms, and one student member. Together the members study, evaluate, and discuss issues that may have environmental consequences in the region.



# **Appendix A**

## **Public Participation and Community Relations Policy**

---

**U.S. Department of Energy  
Washington, D.C.**

**POLICY**

**DOE P 141.2**

Approved: 05-02-03

**SUBJECT: PUBLIC PARTICIPATION and COMMUNITY RELATIONS**

---

**PURPOSE**

Public participation is open, ongoing, two-way communication, both formal and informal, between the Department of Energy (DOE) and its stakeholders concerning DOE's missions and activities. Effective public participation is at the core of good community relations, which is essential for DOE facilities to achieve their missions. Regular, interactive communication enables all parties to learn about and better understand the views and positions of each other.

The Department recognizes the many benefits to be derived from public participation and good community relations, for both stakeholders and DOE. Public participation provides a means for DOE to gather a diverse collection of opinions, perspectives, and values from the broadest spectrum of the public, enabling the Department to make more informed decisions. Public participation benefits stakeholders by creating an opportunity to provide input on decisions that affect their communities and our nation.

This Policy is intended to ensure that public participation and community outreach are integral and effective parts of DOE activities and that decisions are made with the benefit of significant public perspectives. This policy provides a mechanism for bringing a broad range of stakeholder viewpoints and community values into DOE's decision-making early in the process. This early involvement enables DOE to make more informed decisions and build mutual understanding and trust between DOE, the public it serves, and the communities which host its facilities.

**SCOPE**

This policy is designed to function as a framework within which all DOE programs, including programs of the National Nuclear Security Administration, will operate. While the policy applies to all levels of DOE, its intent is the development and implementation of effective public participation programs at each appropriate field site by management officials designated by a site's Lead Program Secretarial Officer. It is also intended that these programs will be tailored to meet specific site and stakeholder needs and that they will include performance goals for community relations. This policy is not intended to affect requirements imposed by law, regulation, or contractual agreement; neither does it expand or limit any rights available to the public under current law.

---

**DISTRIBUTION:**  
All Departmental Elements

---

**INITIATED BY:**  
Office of Congressional and  
Intergovernmental Affairs

**POLICY**

Public participation is a fundamental component in program operations, planning activities, and decision-making within DOE. The Department encourages such participation. Effective public participation and good community relations both rest on a foundation of positive personal relationships; DOE managers and staff are encouraged to seek to build and nurture such relationships.

The methods used to encourage public participation will vary widely in nature and scope and may include, but are not limited to, informal conversations, written and electronic communication, scheduled meetings and workshops, legally required hearings, and Federal-State-local-Tribal meetings. Under this Policy, DOE will actively seek, consider, and respond in a timely manner to the views of its stakeholders, thereby providing them an opportunity to influence decisions. Stakeholders are defined as those individuals, groups, host communities, and other entities in the public and private sectors that are interested in or affected by any of DOE's activities and decisions.

**GOALS**

The goals of the DOE Public Participation and Community Relations Policy are as follows:

1. DOE will actively seek to identify stakeholders, consider public input, and incorporate or otherwise respond to the views of its stakeholders in making its decisions.
2. The public will be informed in a timely manner and empowered to participate at appropriate stages in DOE's decision-making processes. Such processes will be open, understandable, and consistently followed. Managers will define clear access points for public input from the earliest stages of a decision process and will provide adequate time for stakeholders to participate.
3. Credible, effective public participation processes, including active community outreach, will be consistently incorporated into DOE program operations, planning activities, and decision-making processes, at Headquarters and in the field. Employees within the DOE complex will share responsibility for promoting and improving public participation and community relations.
4. DOE will conduct periodic reviews of its public participation and community relations efforts.

## CORE VALUES

Though program-specific public participation activities may vary throughout DOE, each program will be characterized by the following core values:

Accessibility Known avenues to DOE managers who are available, approachable, and open to the public.

Accountability Responsibility to the public for its decisions and a willingness to provide the rationale for its decisions.

Accuracy Commitment to the truth.

Communication Open, two-way exchange of information, knowledge, and perspectives between DOE and its stakeholders, including its host communities.

Consistency Stakeholder and community interactions marked by regularity and continuity.

Fairness Objectivity and freedom from undue favor toward any side.

Honesty Commitment to fairness, trustworthiness, and straightforwardness.

Innovation Introduction of new ideas, methods, and approaches.

Openness Ready accessibility and a willingness to listen, consider, and respond to the views of stakeholders.

Respect Consideration of and sensitivity to diversity and cultural concerns of stakeholders.

Responsiveness Timely and thoughtful consideration of and response to the needs and concerns of stakeholders and affected communities.

Scientific  
Credibility Commitment to the pursuit of sound, dependable, leading edge science.

Sincerity Openness, frankness, and truthfulness in all stakeholder and community communications.

Time/  
Timeliness Adequate amount of time for stakeholders to participate in DOE decision-making processes. Timely responses to stakeholder input and requests. Timely DOE decisions informed but not delayed by public participation.



**ACCOUNTABILITY**

Senior Departmental program, staff office, and field managers are accountable for ensuring that public participation and community relations activities meet the goals of this Policy, are fully coordinated, and reflect DOE principles and values. Program or staff office and project managers are responsible for ensuring that appropriate public participation and community relations activities are identified and included in their decision-making processes.

Public participation is a performance element for these managers; they will be given incentives for good stakeholder and community relations and held to measurable performance standards.

BY ORDER OF THE SECRETARY OF ENERGY:



KYLE E. MCSLARROW  
DEPUTY SECRETARY

DOE P 141.2

05-07-03

**ERRATA**

This Errata corrects DOE P 141.2, Public Participation and Community Relations, dated 5-20-02, and must be kept with the policy.

Cancellation of DOE P 1210.1, Public Participation, dated 07-29-94, was omitted from DOE P 141.2. This errata cancels DOE P 1210.1.

## **Appendix B**

### **Other Environmental Laws and Directives**

---

## Clean Air Act

Under the Clean Air Act, the U.S. Environmental Protection Agency (EPA) sets limits on how much of a pollutant can be in the air anywhere in the United States. This ensures that all Americans have the same basic health and environmental protection. The law allows individual states to have stronger pollution controls, but states are not allowed to have weaker pollution controls than those set for the country.

## Clean Water Act

The Clean Water Act establishes the basic structure for regulating discharges of pollutants into the waters of the United States. It gives the EPA the authority to implement pollution control programs, such as setting wastewater standards for industry. It requires water quality standards to be set for all contaminants in surface waters.

## Emergency Planning and Community Right-to-Know Act

The Emergency Planning and Community Right-to-Know Act (EPCRA) was enacted by Congress as the national legislation on community safety. This law was designated to help local communities protect public health, safety, and the environment from chemical hazards. To implement EPCRA, Congress required each state to appoint a State Emergency Response Commission. The commissions were required to divide their states into Emergency Planning Districts and to name a Local Emergency Planning Committee for each district. Broad representation by firefighters, health officials, government and media representatives, community groups, industrial facilities, and emergency managers ensures that all necessary elements of the planning process are represented.

EPCRA established the Toxic Release Inventory, a publicly available EPA database ([www.epa.gov/tri](http://www.epa.gov/tri)) that contains information on toxic chemical releases and other waste management activities reported annually by certain covered industry groups as well as federal facilities.

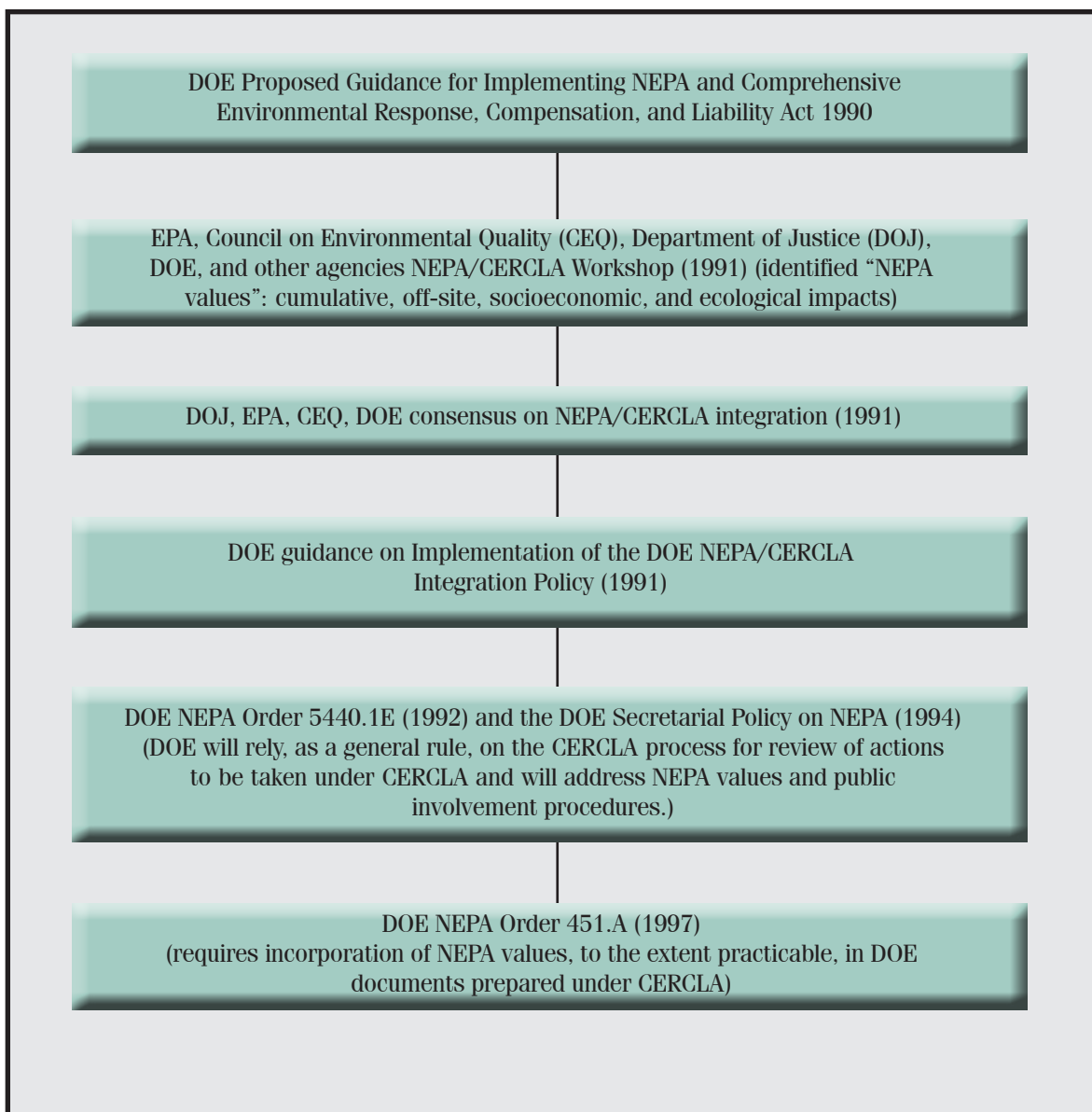
## National Environmental Policy Act

The National Environmental Policy Act (NEPA) requires federal agencies to provide public officials and citizens with environmental and socioeconomic information for proposed major federal actions that could affect environmental quality. Environmental Assessments are prepared to determine whether potential impacts of the proposed action might be significant. If so, an Environmental Impact Statement is prepared to evaluate the impacts of various alternatives to the proposed action. The NEPA process requires public involvement and access to information. Formal public meetings are held in conjunction with the scoping and preparation of Environmental Impact Statements, giving regulators and citizens an opportunity to comment openly on the U.S. Department of Energy's (DOE) planned activities.

NEPA requires agencies of the Federal Government to:

- Act as an environmental trustee for future generations;
- Ensure healthful, productive, and aesthetically and culturally pleasing surroundings;
- Attain the widest possible range of beneficial uses of the environment without degradation or risk to health and safety;
- Preserve historic and cultural heritage and individual opportunity for choice;
- Achieve a balance between population and resource use; and
- Enhance the quality of renewable resources and encourage recycling of depletable resources.

## NEPA/CERCLA Integration



## Resource Conservation and Recovery Act

The Resource Conservation and Recovery Act (RCRA) was passed in 1976 to address management of the country's huge volume of solid waste. The law requires that EPA regulate the management of hazardous waste, which includes waste solvents, batteries, and many other substances deemed potentially harmful to human health and the environment. RCRA also regulates underground tanks used to store petroleum and hazardous substances, recyclable used oil and batteries, mercury thermostats, selected pesticides, and fluorescent/hazardous light bulbs as universal wastes.

The RCRA regulations deal primarily with waste from current or ongoing operations, and as such, the waste is designated as newly generated.

The ETTP, Oak Ridge National Laboratory, and the Y-12 Complex are considered RCRA large-quantity generators. Each facility generates RCRA hazardous waste, some of which contains radionuclides (mixed waste). Currently, there are more than 500 generator accumulation areas at the three Reservation installations.



The CERCLA response action and RCRA corrective action processes are similar and include four steps with similar purposes.

### ***CERCLA and RCRA corrective action processes***

<b>CERCLA</b>	<b>RCRA</b>	<b>Purpose</b>
Preliminary Assessment/ Site Investigation	RCRA facility assessment	Identify releases needing further investigations
Remedial Investigation	RCRA facility investigation	Characterize nature, extent, and rate of contaminant releases
Feasibility Study	RCRA facility investigation	Evaluate and select remedy
Remedial Design/ Remedial Action	Corrective measures implementation	Design and implement chosen remedy

EPA, DOE, and TDEC entered into the ORR FFA to ensure that the environmental impacts associated with past and present activities at the ORR are thoroughly investigated and that appropriate remedial actions or corrective measures are taken as necessary to protect human health and the environment. The FFA is also intended to coordinate the corrective action processes of RCRA required under the Hazardous and Solid Waste Amendments permit with CERCLA. [[http://tis.eh.doe.gov/oepa/law\\_sum/RCRA.HTML](http://tis.eh.doe.gov/oepa/law_sum/RCRA.HTML)]

## **RCRA Public Involvement on the Reservation**

RCRA addresses those hazardous waste management facilities that are currently in operation or about to commence operations. On the ORR, there are active waste management facilities with RCRA permits. As with CERCLA, RCRA requires public participation in varying capacities and methodologies.

RCRA requires public notices in several situations. Some of them are:

- When the agency issues a draft permit, grants an appeal, or holds a public hearing;
- The permit applicant plans a pre-application meeting;
- The facility or the agency proposes permit modifications;
- When an information repository is required by the agency; and
- When the facility conducts a trial burn, which demonstrates that operating conditions are consistent with applicable rules and regulations, or performs closure or post-closure.

A typical public notice contains the following:

- Name and address of the facility;
- Description of the process conducted at the facility;
- Name, address and telephone number of an individual at the permitting agency;
- An overview of the public involvement process including procedures and deadlines for public comments;
- Contact information for all sources of technical assistance at State and EPA levels;
- Location and operating hours of the facility where administrative records are kept; and
- Website addresses of the facility and permitting agency.

Generally, the public notices are distributed by newspaper advertisement including newspaper inserts, radio and television announcements, and signs and bulletin boards.

RCRA also requires that a current mailing list be maintained. In addition to the applicant and the agency with jurisdiction over the facility, the list may include the following:

- Adjoining property owners;
- All persons who have requested to be on the mailing list to receive public notices;
- Environmental and other groups with an interest in any activity covered by the agency; and
- Any state whose waters may be affected by the activity.

The agency with RCRA-related jurisdiction on the ORR is:

State of Tennessee  
Department of Environment and Conservation  
Division of Solid Waste Management  
L&C Tower  
401 Church St.  
Nashville, TN 37243-1535

## **“Federal Actions to Address Environmental Justice in Minority Populations and Low-Income Populations,” Executive Order 12898**

Environmental justice seeks to ensure the right of all people regardless of race, culture, education, or income level to live in a healthy environment, to breathe clean air, drink clean water, and eat food grown in uncontaminated soil.

In February 1994, former President Clinton established environmental justice as a national priority by issuing Executive Order 12898, “Federal Actions to Address Environmental Justice in Minority Populations and Low-Income Populations.” At that time, he directed all federal agencies with a public health or environmental mission to make environmental justice an integral part of their policies and activities.

OREM realizes that public involvement must be an essential element in reaching its environmental justice goals. Because of its importance, OREM will develop and carry out activities to improve and increase communication among and outreach to minority and low-income communities that may be affected by DOE operations. These efforts include:

- Scheduling public meetings to make them accessible and user-friendly;
- Providing information in a timely, accessible, and understandable manner;
- Seeking and ensuring the active involvement of affected communities early and throughout the decision-making process; and
- Developing relationships with affected community organizations.

An environmental justice strategy is in place at OREM under the direction of the Diversity Programs and Employee Concerns Office. The strategy addresses the need to effectively communicate DOE activities to minority communities. Efforts are under way to ensure that DOE activities are presented to the public in a manner that does not require stakeholders to possess a technical background for them to effectively participate in the decision-making process.

OREM’s vision for environmental justice is to incorporate the highest concern for the effect on the environment into all its policies, programs, and practices; facilitate and participate in research, development, and technology and information transfer for the benefit of the environment; and contribute to the education of an environmentally literate citizenry. The Diversity Programs and Employee Concerns Office can be contacted at [Moses.Madera@science.doe.gov](mailto:Moses.Madera@science.doe.gov). The office is also available by calling (865) 546-4988 or by mail at P.O. Box 2001, Oak Ridge, TN 37831.

# **Appendix C**

## **CERCLA Public Involvement Requirements**

---

## Appendix C. CERCLA Public Involvement Requirements

The CERCLA response effort is guided by the National Oil and Hazardous Substances Pollution Contingency Plan, commonly referred to as the National Contingency Plan [40 Code of Federal Regulations (CFR) Part 300]. The National Contingency Plan describes the steps that responsible parties (including federal facilities) must follow in reporting and responding to situations in which hazardous substances are released into the environment. The National Contingency Plan establishes the criteria, methods, and procedures EPA uses to determine which releases have priority for long-term evaluation and response. The national goal described in the National Contingency Plan is to select remedies that are protective of human health and the environment, that maintain protection over time, and that minimize untreated waste.

Both CERCLA, as amended by the Superfund Amendments and Reauthorization Act, and the National Contingency Plan provide authority for two types of response actions: removal actions and remedial actions.

Removal Actions are short-term actions taken to:

- Clean up or remove released hazardous substances, pollutants, or contaminants;
- Mitigate a threat of release of hazardous substances;
- Monitor and evaluate release conditions;
- dispose of removed material; and/or
- Mitigate or prevent damage to public health, welfare, or the environment.

The National Contingency Plan categorizes removal actions in three ways:

1. Emergency removal actions,
2. Time-critical removal actions, and
3. Non-time-critical removal actions.

These categories are based on the type of situation, the urgency of the threat of release, and the subsequent time frame in which the action must be initiated. Emergency removal actions are necessary when there is a release that requires on-site activities to begin within hours or days. Time-critical removal actions are taken in response to releases requiring on-site action within six months. Non-time-critical removal actions are taken when a removal action is determined to be appropriate, but a planning period of at least six months is available before on-site activities must begin.

Section 40 CFR 300.415(e) lists removal actions that address specific situations. In general, removal actions can include, but are not limited to, one or more of the following activities:

- Fences, warning signs, or other security or site control precautions—where humans or animals have access to the release;
- Drainage controls, for example, runoff or run-on diversion—where needed to reduce migration of hazardous substances, pollutants, or contaminants off-site or to prevent precipitation or run-off from other sources (e.g., flooding) from entering the release area;
- Stabilization of berms, dikes, or impoundments or drainage or closing of lagoons—where needed to maintain the integrity of the structures;
- Caps on contaminated soils or sludges—where needed to reduce migration of hazardous substances, pollutants, or contaminants into soil, ground or surface water, or air; use of chemicals and other materials to retard the spread of the release or to mitigate its effects—where the use of such chemicals will reduce the spread of the release;
- Excavation, consolidation, or removal of highly contaminated soils from drainage or other areas—where such actions will reduce the spread of, or direct contact with, the contamination;
- Removal of drums, barrels, tanks, or other bulk containers that contain or may contain hazardous substances or pollutants or contaminants—where it will reduce the likelihood of spillage; leakage; exposure to humans, animals, or the food chain; or fire or explosion;



- Containment, treatment, disposal, or incineration of hazardous materials—where needed to reduce the likelihood of human, animal, or food chain exposure; or
- Provision of an alternative water supply—where immediately necessary to reduce exposure to contaminated household water and continuing until such time as local authorities can provide a permanent remedy.

Remedial Actions, the major part of the CERCLA response program, include the discovery, selection, study, design, and construction of longer-term actions aimed at a permanent remedy. The Superfund remedial process includes the following steps:

- **Preliminary Assessment:** EPA or DOE performs a preliminary assessment of a site (often a review of data without an actual site visit) to determine if further study is necessary.
- **Site Inspection:** A site inspection is an investigation conducted to find out whether there is a release or potential release and to determine the nature of the associated threats.
- **Hazard Ranking System:** Under the Hazard Ranking System, pertinent data about a site are evaluated and “scored.” The score is based on information such as waste volume, waste toxicity, proximity to population, and distance to underground drinking water. Sites receiving a hazard ranking score of 28.5 or higher are considered for listing on the National Priorities List. As hazard ranking studies are performed, release sites and waste sites may be removed or added to the list.
- **National Priorities List:** The National Priorities List (NPL), compiled by EPA, lists those sites, including federally owned facilities, that appear to pose the most serious threats to public health or the environment. EPA determines whether to place a site on the NPL by using the Hazard Ranking System. The Oak Ridge site was placed on the National Priorities List in 1989. Although the name “Oak Ridge Reservation” Site was used to identify the NPL site, EPA has clearly stated that the actual NPL sites are the contaminated portions of the identified sites. Identification of the known contaminated Oak Ridge NPL Site is available on a geographic information system site that clearly identifies the areas that will be addressed under CERCLA (<https://emgis.science.energy.gov>). A public meeting was arranged by DOE and conducted by EPA during October or November 1990 to discuss with the public the addition of the Oak Ridge site on the NPL and the purpose and scope of the FFA under development. Both agencies then participated in answering the public’s questions concerning the placement of Oak Ridge on the NPL and the status of the FFA negotiations.
- **Remedial Investigation:** A remedial investigation, conducted by the lead agency, determines the nature and extent of the problem presented by the release.
- **Feasibility Study:** The lead agency undertakes a feasibility study to develop and evaluate options for remedial action. The remedial investigation and feasibility study are collectively referred to as the “RI/FS.”
- **Proposed Plan:** Selects the preferred alternative from those options developed in the Feasibility Study. The proposed plan is subject to public review and comment.
- **Record of Decision:** After completing the RI/FS, EPA selects the appropriate cleanup option and publishes it in a public document known as the Record of Decision.
- **Remedial Design:** The remedial design includes the technical analysis and procedures that follow the selection of a remedy for a site.
- **Remedial Action:** The remedial action involves the actual construction or implementation of a cleanup. If a hazardous substance will remain at the site, a review of the remedial action is required five years after implementation of the remedy. This review evaluates the protectiveness of the remedial action and, for long-term remedial actions, the effectiveness of the technology and specific performance levels.

Following is a chart outlining the points within the CERCLA process at which opportunities for public involvement are required. However, the public is free to engage and provide comment at any point and address any issue or concern regarding CERCLA cleanup activities. You may wish to refer back to this text for definitions of the specific CERCLA documents discussed in the chart.

## CERCLA Public Involvement Requirements

<i>Site Activity</i>	<i>Implementation</i>
<b>For all removal/remedial actions</b>	
Agency Spokesperson	The agency must designate a spokesperson to inform the public about the release and actions taken; to respond to questions; and to notify immediately affected citizens, state and local officials; and, when appropriate, civil defense or emergency management agencies.
Administrative Record	The agency must establish an administrative record for each CERCLA decision and make the AR available to the public at a central location at or near the site. Hard copies, CDs, and weblinks can be made available to the public or contractors by requests made to the DOE Information Center.
Community Relations Plan	The agency must prepare a formal report based on community interviews and other relevant information that specifies the community relations activities the agency plans to undertake during the response. This <i>Public Involvement Plan</i> satisfies this requirement.
<b>For time-critical removal actions</b>	
Notice and Availability of Administrative Record	Within 60 days of the start of an on-site removal activity, the lead agency must make the administrative record available to the public and issue a notice of availability in a major local newspaper of general circulation.
Public Comment Period	The agency must provide a public comment period, if appropriate, of not less than 30 days from the time the AR is made available for public inspection.
Response to Significant Comments	The agency must prepare a written response to significant comments.
<b>For non-time-critical removal actions</b>	
Information Repository/Administrative Record Establishment and Notification	The agency must follow the same procedures as outlined in the previous section, except that staff must establish the information repository and make the administrative record available no later than the signing of the Engineering Evaluation/Cost Analysis.
Notice of Availability/Description of the Engineering Evaluation/Cost Analysis	The agency must publish a notice of availability and a brief description of the Engineering Evaluation/Cost Analysis in a major local newspaper of general circulation.

## CERCLA Public Involvement Requirements (continued)

<i>Site Activity</i>	<i>Implementation</i>
Public Comment Period	Upon completion of the Engineering Evaluation/Cost Analysis, the agency must provide at least 30 days for the submission of written and oral comments. The agency must extend this comment period by at least 15 days upon timely request.
Responsiveness Summary	The agency must prepare a written response to significant comments and make this responsiveness summary available to the public in the information repository.
<b>Remedial response before Remedial Investigation:</b>	
Community Interviews	The agency must hold on-site discussions with local officials and community members to assess their concerns and determine appropriate community relations activities.
Information Repository	The agency must establish an information repository to contain items developed, received, published, or made available pursuant to Sect. 117. The agency must make these items available for public inspection and copying and inform interested citizens of the establishment of the information repository.
<b>Upon commencement of the Remedial Investigation:</b>	
Administrative Record Notification	The agency must publish a notice of availability of the AR in a major local newspaper of general circulation.
<b>Upon completion of the Feasibility Study and Proposed Plan:</b>	
Remedial Investigation/Feasibility Study and Proposed Plan Notification and Analysis	The agency must publish a notice of the availability of the Remedial Investigation/Feasibility Study and the Proposed Plan, including a brief summary of the Proposed Plan, in a major local newspaper of general circulation. The notice also must announce a comment period for the Proposed Plan.
Public Comment Period on the Proposed Plan	The agency must provide at least 30 days for the submission of written and oral comments on the Proposed Plan. This comment period will be extended by a minimum of 30 additional days upon timely request.

## CERCLA Public Involvement Requirements (continued)

<i>Site Activity</i>	<i>Implementation</i>
Public Meeting	The agency must provide an opportunity for a public meeting to be held at or near the site during the comment period.
Meeting Transcript	If a meeting is held, the agency must prepare a meeting transcript and make it available to the public.
<b>Pre-Record of Decision significant changes:</b>	
Responsiveness Summary	The agency must prepare a response to significant comments, criticisms, and new data submitted on the Proposed Plan and the RI/FS and ensure that this response document accompanies the Record of Decision.
Discussion of Significant Changes	Upon determination that such changes could be reasonably anticipated by the public, the agency must include in the ROD a discussion of significant changes and the reasons for such changes.
Revised Proposed Plan and Public Comment	Upon determination that such changes could not have been reasonably anticipated by the public, the agency must issue a revised Proposed Plan that includes a discussion of the significant changes and the reasons for such changes. The agency must seek additional public comment on the revised Proposed Plan.
<b>After the Record of Decision is signed:</b>	
Record of Decision Availability and Notification	The agency must make the ROD available for public inspection and copying at or near the site before beginning any remedial action. Also, the agency must publish a notice of the ROD's availability in a major local newspaper of general circulation. The notice must state the basis and purpose of the selected action.



## CERCLA Public Involvement Requirements (continued)

<i>Site Activity</i>	<i>Implementation</i>
<b>Post-Record of Decision changes:</b>	
<i>When the remedial action, enforcement action, settlement, or consent differs significantly from the remedy selected in the ROD with respect to scope, performance, or cost:</i>	
Nonsignificant changes	Non-significant changes can be made via the addition of a memo-to-file signed by the lead agency that has been agreed to by the three parties to the FFA.
Notice and Availability of Explanation of Significant Differences	The agency must publish a notice that briefly summarizes the explanation of significant difference and the reasons for such differences in a major local newspaper and make the explanation of significant difference and supporting information available to the public in the AR and information repository.
<i>When the remedial action, enforcement action, settlement, or consent decree fundamentally alters the basic features of the selected remedy with respect to scope, performance, or cost:</i>	
Notice of Availability/Brief Description of Proposed Record of Decision Amendment	The agency must propose an amendment to the ROD and issue a notice of availability and a brief description of the proposed amendment in a major local newspaper of general circulation.
Public Comment Period, Public Meeting, Meeting Transcript, and Responsiveness Summary	The agency must follow the same procedures as those required for completion of the Feasibility Study and the Proposed Plan.
Notice and Availability of Amended Record of Decision	The agency must publish a notice of availability of the amended ROD in a major local newspaper and make the amended Record of Decision and supporting information available for public inspection and copying in the AR and information repository before beginning the remedial action affected by the amendment.
<b>National Priorities List Deletions:</b>	
Public Notice and Public Comment Period	EPA is required to publish a notice of intent to delete in the <i>Federal Register</i> and provide notice of the availability of this notice of intent to delete in a major local newspaper. EPA must also provide a comment period of at least 30 days on the proposed deletion.
Public Access to Information	Copies of information supporting the proposed deletion must be placed in the information repository for public inspection and copying.

## CERCLA Public Involvement Requirements (continued)

<i>Site Activity</i>	<i>Implementation</i>
Response to Significant Comments	EPA must respond to each significant comment and any significant new data submitted during the comment period and include these responses in the final deletion package.
Availability of Final Deletion Package	The final deletion package must be placed in the local information repository once the notice of final deletion has been published in the <i>Federal Register</i> .

# Appendix D

## Media

---





# Media List

Following are the media outlets from which the public can obtain information about the activities on the U.S. Department of Energy Oak Ridge Reservation. In case of emergency events, DOE will notify these outlets so that information can be disseminated.

## Newspaper

---

Knoxville News Sentinel  
Oak Ridger\*  
Roane County News\*  
Morgan County News

Clinton Courier  
Maryville Daily Times  
Loudon County News-Herald  
Associated Press–Knoxville

## Radio

---

WYSH (1380 AM, Clinton, TN)  
WKTS (90.1 FM, Kingston, TN)  
WUOT (91.9 FM, Knoxville, TN)  
WMYU (93.1 FM, Knoxville, TN)  
WXJB (96.5 FM, Harrogate, TN)  
WJXB (97.5 FM, Knoxville, TN)

WOKI (98.7 FM, Oliver Springs, TN)  
WNOX (100.3 FM, Knoxville, TN)  
WWST (102.1 FM, Knoxville, TN)  
WIMZ (103.5 FM, Knoxville, TN)  
WIVK (107.7 FM, Knoxville, TN)

## Television

---

WATE-TV (ABC) Channel 6 - Knoxville, TN  
WVLT-TV (CBS) Channel 8 - Knoxville, TN  
WBIR-TV (NBC) Channel 10 - Knoxville, TN

WTNZ (FOX) Channel 43 - Knoxville, TN  
BBB Communications Channel 12 - Oak Ridge, TN  
Oak Ridge Channel 15

\* Local newspapers that DOE uses to advertise public comment periods.



# **Addendum**

## **Community Outreach Plan for the Environmental Management Disposal Facility**

---







U.S. Department of Energy  
Oak Ridge Office of  
Environmental Management

## **Community Outreach Plan for the Environmental Management Disposal Facility**

## ACRONYMS

CERCLA	Comprehensive Environmental Response, Compensation, and Liability Act
DOE	U.S. Department of Energy
EMDF	Environmental Management Disposal Facility
EMWMF	Environmental Management Waste Management Facility
EPA	U.S. Environmental Protection Agency
ETEBA	Energy Technology and Environmental Business Association
FFA	Federal Facilities Agreement
OREM	Oak Ridge Office of Environmental Management
ORNL	Oak Ridge National Laboratory
ORSSAB	Oak Ridge Site Specific Advisory Board
RI/FS	Remedial Investigation/Feasibility Study
TDEC	Tennessee Department of Environment and Conservation
Y-12	Y-12 National Security Complex

## CONTENTS

<b>ACRONYMS .....</b>	<b>i</b>
<b>1.0 INTRODUCTION.....</b>	<b>1</b>
<b>2.0 EXPANDING COMMUNICATION OPPORTUNITIES TO RESIDENTS AND STAKEHOLDERS .....</b>	<b>1</b>
<b>3.0 SHARING INFORMATION ON THE SITE SELECTION PROCESS.....</b>	<b>2</b>
<b>4.0 INVOLVEMENT WITH THE U.S. ENVIRONMENTAL PROTECTION AGENCY AND TENNESSEE DEPARTMENT OF ENVIRONMENT AND CONVERSATION.....</b>	<b>2</b>
<b>5.0 CAPTURING QUESTIONS AND CONCERNS FROM THE COMMUNITY.....</b>	<b>2</b>
<b>6.0 COMMUNICATION AND OUTREACH.....</b>	<b>3</b>
<b>6.1 MEDIA .....</b>	<b>3</b>
<b>6.2 BRIEFINGS TO ADVISORY BOARDS.....</b>	<b>4</b>
<b>6.3 PRESENTATIONS TO LOCAL ORGANIZATIONS .....</b>	<b>6</b>
<b>6.4 DISCUSSIONS, TOURS, AND INTERACTIONS WITH STATE, COUNTY, AND CITY OFFICIALS.....</b>	<b>7</b>
<b>6.5 CONVERSATIONS WITH RESIDENTS AND PUBLIC MEETINGS .....</b>	<b>8</b>
<b>7.0 PLANNED OUTREACH .....</b>	<b>9</b>
<b>APPENDIX A. LOCATIONS IDENTIFIED FOR ONSITE DISPOSAL ALTERNATIVES .....</b>	<b>A-1</b>
<b>APPENDIX B. U.S. DEPARTMENT OF ENERGY RESPONSES TO FREQUENTLY ASKED QUESTIONS REGARDING THE ENVIRONMENTAL MANAGEMENT WASTE MANAGEMENT FACILITY AND THE ENVIRONMENTAL MANAGEMENT DISPOSAL FACILITY .....</b>	<b>B-1</b>

## **1.0 INTRODUCTION**

As part of the Comprehensive Environmental Response, Compensation, and Liability Act (CERCLA) process, the U.S. Department of Energy (DOE) Oak Ridge Office of Environmental Management (OREM) is working with other parties of the Federal Facilities Agreement (FFA), U.S. Environmental Protection Agency (EPA), and Tennessee Department of Environment and Conservation (TDEC) to finalize a path forward for a proposed onsite disposal area.

OREM is providing this document to share the full range and scope of its outreach efforts regarding the proposed disposal area, known as the Environmental Management Disposal Facility (EMDF). The desire from all FFA parties is to provide opportunities for local residents to learn more about the project, location, and alternatives before confirming a site.

There are four (4) onsite alternatives under consideration for the disposal facility, ranging from approximately 0.8 to 1.14 miles from the nearest resident. DOE, EPA, and TDEC want to ensure appropriate education and interaction occurs with Oak Ridge residents, especially from the Scarboro community and Country Club Estates which are the closest residential areas to the proposed site(s) on DOE land.

Together, DOE, EPA, and TDEC are releasing this document to convey the diversified outreach initiatives to reach residents and stakeholders nearest the proposed site(s). OREM's previous and future communications to the local community are detailed in this document. As major developments occur, OREM will update this document to reflect those changes as necessary. For more information about OREM's overall community engagement efforts and opportunities for public input, please reference DOE's Public Involvement Plan.

## **2.0 EXPANDING COMMUNICATION OPPORTUNITIES TO RESIDENTS AND STAKEHOLDERS**

Due to the nature of this project, OREM is conducting a proactive outreach that extends beyond its normal audiences. Depending on the needs of the audience, OREM implemented, and will continue to implement, activities that vary in size from large groups to individual, personalized meetings. OREM has already spoken with state, county, and city officials; nearby residents; businesses; and other community representatives with more interactions and meetings planned in the months ahead.

OREM is especially mindful of its host community and local residents as it plans the EMDF. As part of OREM's public outreach for the project, interested stakeholders have been, and will continue to be, identified to include elected officials, community and business organizations, and neighborhood communities near the proposed site(s). Outreach continues through discussion groups, presentations, and tours.

### **3.0 SHARING INFORMATION ON THE SITE SELECTION PROCESS**

OREM has exerted significant efforts in providing technical information supporting the CERCLA remedy selection process to the public. Briefings and public discussions surrounding the proposed disposal area have incorporated the results from extensive siting studies, results from past Remedial Investigation/Feasibility Study (RI/FS) efforts, and available results from the ongoing RI/FS effort associated with this project.

In multiple public forums, OREM has shared and made information available on the performance of the existing disposal facility, geotechnical information on the various sites under consideration, information on current waste acceptance criteria and waste acceptance protocols, and available information on the risks and projected costs of the various alternatives. Since the RI/FS for the project has not yet been approved by EPA and TDEC, there are limitations on its use in public discussions. However, in its discussions and presentations, OREM works to educate stakeholders about where the RI/FS is in the process and how the public can provide input to help shape planning and decisions.

The RI/FS is currently in revision to address regulatory comments. Community concerns will be addressed both in the RI/FS and the Proposed Plan in compliance with all applicable regulatory requirements and EPA guidance. More information about the CERCLA process is available in OREM's Public Involvement Plan.

### **4.0 INVOLVEMENT WITH THE U.S. ENVIRONMENTAL PROTECTION AGENCY AND TENNESSEE DEPARTMENT OF ENVIRONMENT AND CONSERVATION**

OREM is committed to working cooperatively with EPA and TDEC on all CERCLA items, including the proposed EMDF. OREM relies on EPA and TDEC for valuable, independent assessments and perspective to help guide the organization's activities. OREM will formally notify and include EPA and TDEC on all communication pertaining to CERCLA-driven meetings and correspondence about EMDF. Also, to the extent practical, OREM will keep both parties aware of other meetings and outreach pertaining to this project.

### **5.0 CAPTURING QUESTIONS AND CONCERNS FROM THE COMMUNITY**

OREM is committed to public participation in its decision-making process to entail listening to any questions and concerns from our host community, its residents, and local stakeholders. OREM collects questions it receives during each outreach activity and has consistently addressed the questions/concerns or included responsive information in subsequent public information and presentations.

All formal meetings with the Oak Ridge Site Specific Advisory Board (ORSSAB) are memorialized with official meeting notes and visual recordings. Additionally, all ORSSAB



recommendations and written correspondence received on EMDF are answered with written responses. OREM will use the standard protocols for memorializing formal public comment on the upcoming Proposed Plan, including maintenance of an Administrative Record.

To date, many community members have expressed an understanding that deteriorating facilities at the Y-12 National Security Complex (Y-12) and Oak Ridge National Laboratory (ORNL) need to be addressed as quickly as possible. Disposing soil and debris in a properly designed, constructed, and operated facility is preferable to delaying cleanup due to the extremely high cost for offsite disposal. The common concerns and interests that have been recorded include:

- Negative stigma associated with the waste site to prospective businesses or residents
- Close proximity to residential neighborhoods
- Ensuring thorough geologic assessments of the proposed site(s)
- Understanding waste acceptance criteria and what will be placed at the site
- Preventing offsite contamination
- Lack of compensation from DOE to the City of Oak Ridge for hosting the disposal facility

The frequently asked questions from the City of Oak Ridge and local residents along with OREM's responses are provided in Appendix B. If you wish to contact OREM about this project, please contact Ben Williams, Community Involvement Coordinator, at [Ben.Williams@orem.doe.gov](mailto:Ben.Williams@orem.doe.gov).

## 6.0 COMMUNICATION AND OUTREACH

### 6.1 MEDIA

OREM has participated in interviews and submitted multiple op-eds to local papers regarding EMDF. The goal was to inform readers and residents about the importance of the project and the cleanup work it would enable.

- **Interview with the Knoxville News Sentinel Editorial Board:** On July 15, 2015, Sue Cange, OREM Manager, met with the Knoxville News Sentinel Editorial Board. The goal of this interview was to use the newspaper's larger distribution to inform readers about the importance and impact of this OREM's ongoing work and raise awareness about EMDF. She discussed OREM's ongoing projects and the agency's strategy and plan to continue its progress to clean up the Oak Ridge's three (3) major sites—East Tennessee Technology Park, Y-12, and ORNL. During her time with the Knoxville News Sentinel Editorial Board, she specifically discussed the proposed EMDF and how it is a crucial component that will enable a majority of the subsequent cleanup planned for the site.
- **Op-ed in The Oak Ridger:** On July 9, 2015, Ken Rueter, President of URS | CH2M Oak Ridge LLC, submitted an op-ed titled, "Staying the Course," in the Oak Ridger. In it, he discussed URS | CH2M Oak Ridge LLC's current work at the East Tennessee Technology Park and the shrinking capacity at the current disposal area, the

Environmental Management Waste Management Facility (EMWMF). Without a new disposal area onsite, it would force OREM to send hundreds of millions of pounds of waste by truck to repositories across the country. The substantial costs required for this cross-country transportation would result in fewer cleanup activities in Oak Ridge and add years to the cleanup schedule. Specifically, this would directly and significantly impact the planned cleanup at Y-12 and ORNL.

- **Op-ed in the Oak Ridger:** On June 17, 2015, Sue Cange, OREM Manager, submitted an op-ed titled, “Finishing the Job,” to the Oak Ridger. In it, she describes the two (2) greatest needs to continue OREM’s cleanup work beyond the East Tennessee Technology Park without interruption. First is the Mercury Treatment Facility at Y-12, and the second is an onsite disposal area. The existing disposal area has operated safely for 15 years and saved hundreds of millions of dollars. Those savings have been poured back into actual cleanup, which has allowed OREM to accelerate its cleanup mission in Oak Ridge. The proposed area would offer the same.

## 6.2 BRIEFINGS TO ADVISORY BOARDS

OREM has regularly communicated the latest developments and plans for EMDF with its Federally-appointed citizen panel, the ORSSAB. These monthly meetings, which are open to the public, include representatives from all FFA parties and many of the communities surrounding the Oak Ridge Reservation. The Board provides a crucial and valuable interaction point with the public for feedback and recommendations. It is composed of up to 22 members that are chosen to reflect the diversity of gender, race, occupation, views, and interests of persons living near the Oak Ridge Reservation.

- **ORSSAB - January 13, 2016 – “Waste Management Practices on the Oak Ridge Reservation”:** In this briefing, representatives from OREM made presentations and discussed waste management practices on the Oak Ridge Reservation. Specifically, Brian DeMonia, Bill McMillan, and Brian Henry spoke on behalf of OREM to the Board. They discussed the various forms of waste on the Oak Ridge Reservation and where each form is sent for disposal. This information provides a deeper understanding and context for future discussions on the subject. It also addressed waste acceptance criteria, which is one of the key questions from the community regarding the proposed EMDF.
- **Roane County Environmental Review Board - November 5, 2015:** Laura Wilkerson, OREM’s Y-12 Federal Portfolio Director for cleanup, provided a briefing to the Roane County Environmental Review Board. During her time with the Roane County Environmental Review Board, she discussed OREM’s ongoing projects, including the proposed EMDF. She was also able to provide clarity on the subject and answered questions they had on the subject.
- **ORSSAB - September 9, 2015 – “Y-12 Mercury Cleanup Strategy and Plan for a Y-12 Water Treatment Plant”:** Jason Darby, OREM representative, provided a presentation and led a discussion about OREM’s plan to clean up Y-12. While he did not spend time discussing EMDF, he provided an account for the environmental risks at Y-12 and why cleanup is needed.

- **ORSSAB - May 13, 2015 – “Meeting with Oak Ridge City Manager about the city's perspective on DOE EM work on the Oak Ridge Reservation”:** ORSSAB invited Mark Watson, Oak Ridge City Manager, to talk to the Board about the City of Oak Ridge’s perspectives regarding OREM. One of the most significant topics during the meeting was EMDF. The City of Oak Ridge is interested in a number of issues related to the project: What will be the impact on the community especially the nearby residential areas; what are the long-term costs; what are the long-term benefits; and what are the cost comparisons of onsite disposal opposed to shipping waste offsite.
- **ORSSAB - February 11, 2015 – “Sufficient Waste Disposal Capacity on the Oak Ridge Reservation”:** Laura Wilkerson, OREM’s Y-12 Federal Portfolio Director for cleanup, gave a presentation to the ORSSAB about the status of Oak Ridge’s existing disposal area, the EMWMF. She discussed the waste that is currently going to that area, the projections of when it will reach capacity, and the need to begin planning for uninterrupted cleanup. Finally, she discussed the needs for an additional disposal area to accept the soil and debris of the remaining cleanup projects.
- **ORSSAB - August 13, 2014 – “ORSSAB receives suggestions from DOE, EPA, and TDEC on topics to consider in FY 2015”:** In Fiscal Year 2015, DOE, EPA, and TDEC requested ORSSAB to make suggestions on two (2) subjects: EMDF and the Mercury Treatment Facility. DOE’s request: Current schedules call for issuance of a Proposed Plan for addressing future disposal capacity needs in the spring of 2015. DOE will seek ORSSAB input on both the desirability of constructing additional disposal capacity and input on potential facility locations. EPA’s request: Planning is underway to prepare and submit a revised RI/FS for a new onsite land disposal facility. Issues raised in the review pertain to applicable or relevant and appropriate requirements for landfill waste water discharges, lessons learned from the existing EMWMF, and the hydro-geologic setting of the proposed onsite landfill. The alternatives will include combined waste water discharges from both the current operating landfill and the proposed landfill. The ORSSAB’s involvement in the issues raised in the review of the evaluation of alternatives will assist in efforts to incorporate input from the greater Oak Ridge community into the ongoing remedy evaluation and selection process. TDEC’s request: Ongoing siting and design of the EMDF will need to be evaluated to ensure lessons learned from the construction and operation of EMWMF are taken into account when planning for this new facility. The ORSSAB may assist in a programmatic look at future onsite waste disposal on the Oak Ridge Reservation, including topics like potential facility location, the viability of volume reduction technologies, and offsite versus onsite disposal for various types of waste. This should include the suitability of the onsite disposal for the mercury contaminated soils and debris. If deemed suitable, acceptable levels of mercury for disposal and the need for the treatment of effluents for mercury must be considered.
- **ORSSAB - January 8, 2014 - “Sufficient Waste Disposal Capacity for the Oak Ridge Reservation”:** Laura Wilkerson, OREM’s Y-12 Federal Portfolio Director for cleanup, gave a presentation to the ORSSAB about the status of Oak Ridge’s existing disposal area, the EMWMF. She discussed the waste that is currently going to that area, the projections of when it will reach capacity, and the need to begin planning for uninterrupted cleanup. Finally, she discussed the needs for an additional disposal area to accept the soil and debris of the remaining cleanup projects.

- **ORSSAB - May 11, 2016 - “Update on CERCLA Waste Disposal Capacity for the ORR”:** In May, OREM provided an update and briefing about the proposed EMDF project to the ORSSAB and members of the public who attended. OREM discussed and explained the different alternatives being considered.

### 6.3 PRESENTATIONS TO LOCAL ORGANIZATIONS

OREM recognizes the importance of an informed community, and it made significant efforts to communicate to numerous local organizations to reach the widest audience possible. Since some City of Oak Ridge officials expressed concerns about this project relative to the perception of Oak Ridge, OREM scheduled presentations to talk with businesses and organizations across the Oak Ridge area.

- **Presentation to Energy Technology and Environmental Business Association (ETEBA):** On March 24, 2015, Sue Cange, OREM Manager, was the guest speaker at the ETEBA monthly dinner meeting in Oak Ridge. The dinner is open to members and non-members. She spent a majority of her time discussing the plans and impact of EMDF on the progress of OREM’s work.
- **Friends of ORNL:** On February 19, 2016, Dave Adler, OREM representative, gave a presentation to the Friends of ORNL. During his time with the group, he discussed OREM’s ongoing projects, including the proposed EMDF. He spoke about the role this facility plays in the future cleanup plans for the site. He also provided an opportunity for questions and answers on the subject.
- **16th Annual ETEBA Conference:** On December 8, 2015, Sue Cange, OREM Manager, provided a keynote address at the annual ETEBA Conference. ETEBA is a non-profit trade association that represents approximately 200 small, large, and mid-sized companies that provide environmental, technology, energy, engineering, construction, and related services to government and commercial clients. The annual conference attracts hundreds of attendees from across the region. She talked about OREM’s current work and the path and strategy needed to continue cleanup progress onsite.
- **League of Women Voters, Oak Ridge Chapter:** On November 17, 2015, Laura Wilkerson, OREM’s Y-12 Federal Portfolio Director for cleanup, gave a presentation to the Oak Ridge Chapter of the League of Women Voters. During her time with the group, she discussed OREM’s ongoing projects, including the proposed EMDF. She spoke about the role this facility plays in the future cleanup plans for the site. She also provided an opportunity for questions and answers on the subject.
- **Oak Ridge Luncheon Rotary Club:** On November 5, 2015, Laura Wilkerson, OREM’s Y-12 Federal Portfolio Director for cleanup, gave a presentation to the Oak Ridge Luncheon Rotary Club. During her time with the Oak Ridge Luncheon Rotary Club, she discussed OREM’s ongoing projects, including the proposed EMDF. She spoke about the role this facility plays in the future cleanup plans for the site. She also provided an opportunity for questions and answers on the subject.
- **Oak Ridge Breakfast Rotary Club:** On October 7, 2015, Laura Wilkerson, OREM’s Y-12 Federal Portfolio Director for cleanup, gave a presentation to the Oak Ridge Breakfast Rotary Club. During her time with the Oak Ridge Breakfast Rotary

Club, she discussed OREM's ongoing projects, including the proposed EMDF. She spoke about the role this facility plays in the future cleanup plans for the site. She also provided an opportunity for questions and answers on the subject.

- **Oak Ridge Community School:** On September 29, 2015, Dave Adler, OREM representative, spoke on the topic, "How does EM identify and prioritize cleanup," to the Oak Ridge Community School. The annual initiative is sponsored by the League of Women Voters, and it brings in speakers and local leadership to educate participants about the missions and activities happening in the region. During his presentation, he discussed the strategies and factors used to prioritize cleanup, with EMDF being a relevant subject to that discussion.
- **Oak Ridge Community School:** On September 22, 2015, Sue Cange, OREM Manager, provided an overview of the OREM Program to the Oak Ridge Community School. The annual initiative is sponsored by the League of Women Voters, and it brings in speakers and local leadership to educate participants about the missions and activities happening in the region. During her presentation, she talked about OREM's current work and the path and strategy needed to continue cleanup progress onsite.
- **East Tennessee Economic Council keynote:** On August 7, 2015, Sue Cange, OREM Manager, provided the keynote address to the East Tennessee Economic Council, an independent, regional, non-profit membership organization dedicated to supporting the Federal government's missions in Oak Ridge as well as encouraging new opportunities to fully utilize the highly-skilled talent, cutting-edge technologies, and unique facilities that make up the Federal reservation. Most attendees are from the regional business community. She talked about OREM's current work and the path and strategy needed to continue cleanup progress onsite.

#### 6.4 DISCUSSIONS, TOURS, AND INTERACTIONS WITH STATE, COUNTY, AND CITY OFFICIALS

As mentioned above, the City of Oak Ridge sent a list of questions to OREM regarding the details and potential impact of the EMDF. OREM scheduled meetings with all interested City of Oak Ridge council members and local and State officials to participate in personalized tours of the organization's current waste disposal area, view the proposed site(s), and answer any questions regarding the proposed project.

- **Chuck Hope, Oak Ridge City Council member:** On February 26, 2016, OREM provided a briefing and tour of the current EMWMF disposal area. The tour also provided a view of the proposed EMDF site. During this time, OREM employees worked to answer any questions regarding OREM's waste management activities and the proposed site.
- **Kelly Callison, Oak Ridge City Council member:** On December 14, 2015, OREM provided a briefing and tour of the current EMWMF disposal area. The tour also provided a view of the proposed EMDF site. During this time, OREM employees worked to answer any questions regarding OREM's waste management activities and the proposed site.



- **Randy McNally/Ken Yager, Tennessee State Senators:** On September 25, 2015, OREM provided a briefing and tour of the current EMWMF disposal area. The tour also provided a view of the proposed EMDF site. During this time, OREM employees worked to answer any questions regarding OREM's waste management activities and the proposed site.
- **Warren Gooch, City of Oak Ridge Mayor:** On September 10, 2015, OREM provided a briefing and tour of the current EMWMF disposal area. The tour also provided a view of the proposed EMDF site. During this time, OREM employees worked to answer any questions regarding OREM's waste management activities and the proposed site.
- **Charles Hensley, Oak Ridge City Council member:** On September 2, 2015, OREM provided a briefing and tour of the current EMWMF disposal area. The tour also provided a view of the proposed EMDF site. During this time, OREM employees worked to answer any questions regarding OREM's waste management activities and the proposed site.
- **Rick Chinn, Oak Ridge City Council member:** On September 1, 2015, OREM provided a briefing and tour of the current EMWMF disposal area. The tour also provided a view of the proposed EMDF site. During this time, OREM employees worked to answer any questions regarding OREM's waste management activities and the proposed site.
- **Terry Frank, Anderson County Mayor:** On August 26, 2015, OREM provided a briefing and tour of the current EMWMF disposal area. The tour also provided a view of the proposed EMDF site. During this time, OREM employees worked to answer any questions regarding OREM's waste management activities and the proposed site.
- **Mark Watson, City Manager for City of Oak Ridge:** On August 25, 2015, OREM provided a briefing and tour of the current EMWMF disposal area. The tour also provided a view of the proposed EMDF site. During this time, OREM employees worked to answer any questions regarding OREM's waste management activities and the proposed site.
- **Ron Woody, Roane County Mayor:** On August 19, 2015, OREM provided a briefing and tour of the current EMWMF disposal area. The tour also provided a view of the proposed EMDF site. During this time, OREM employees worked to answer any questions regarding OREM's waste management activities and the proposed site.

## 6.5 CONVERSATIONS WITH RESIDENTS AND PUBLIC MEETINGS

OREM continually seeks feedback and perspective from local residents and stakeholders about its ongoing activities. When residents of the Scarboro community expressed uncertainty or concerns about EMDF, OREM worked to set up individual and groups meetings to address their concerns, provide details about the project, and answer any questions. Additionally, OREM has participated in public meetings with the City of Oak Ridge and community that were open to all residents.

- **ETEBA Public Information Session:** On July 27, 2016, the Energy, Technology and Environmental Business Association (ETEBA) hosted a public information session about the different alternatives listed in the RI/FS for the EMDF. The majority of the event was

spent discussing the differences of the four onsite alternatives for EMDF. The goal of the meeting was to raise awareness and educate the public and stakeholders about the different options before the Proposed Plan is released. Upon release, attendees are now equipped with the information necessary to share their perspective and provide meaningful comments. The Department of Energy, the Environmental Protection Agency, and the Tennessee Department of Environment and Conservation all participated in a panel to share their perspectives on the project and answer questions from the audience. The event was covered by the local NBC television affiliate, the Knoxville News Sentinel, and the Oak Ridger newspaper.

- **Oak Ridge City Council meeting to respond to questions:** On March 22, 2016, Sue Cange, OREM Manager, and other Federal and contractor staff participated in a public city council meeting. During the meeting, OREM responded to questions surrounding EMDF which had been sent earlier in a resolution from the City of Oak Ridge. A list of many of the questions and OREM responses is available in Appendix B.
- **Meeting and tour for Scarboro residents:** On December 16, 2015, OREM provided a briefing and tour of the current EMWMD disposal area to interested residents. OREM Manager Sue Cange attended the meeting portion, and other Federal and contractor employees led the follow-on tour. The tour provided a view of the proposed EMDF site. OREM employees worked to answer any questions regarding OREM's waste management activities and the proposed site.
- **Public meeting with residents:** On November 17, 2015, the League of Women Voters hosted a meeting with OREM and community members to learn more about the proposed EMDF project. It provided an opportunity to discuss plans and answer questions surrounding the project.
- **Meetings with concerned residents:** On September 24, 2015, Sue Cange, OREM Manager, met with residents from the Scarboro community at the Y-12 New Hope Center who had questions or concerns about the proposed EMDF site. She provided answers and information regarding OREM's plans for the site and any potential impact.
- **Meetings with concerned residents:** On July 21, 2015, Dave Adler, OREM representative, met with residents from the Scarboro community who had questions or concerns about the proposed EMDF site. He provided answers and information regarding OREM's plans for the site and any potential impact.
- **Meetings with concerned residents:** On June 24, 2015, Dave Adler, OREM representative, met with residents from the Scarboro community who had questions or concerns about the proposed EMDF site. He provided answers and information regarding OREM's plans for the site and any potential impact.

## 7.0 PLANNED OUTREACH

While OREM has already conducted extensive outreach and education about the proposed EMDF, OREM will continue to share information and updates as the planning for the project continues. OREM will again increase outreach opportunities as the project advances through the CERCLA process, which is designed to invite and gather public input to facilitate the best

decisions for the community. As the project continues through the various steps of the CERCLA process, more details will be known about the project to share for discussion and input. Additionally, OREM will provide periodic updates through briefings, presentations, and news stories as the project enters the design and construction phase. Due to the factors under consideration and project's complexity, the timeline below may change. If that occurs, OREM will update this section of the document to reflect the most current information.

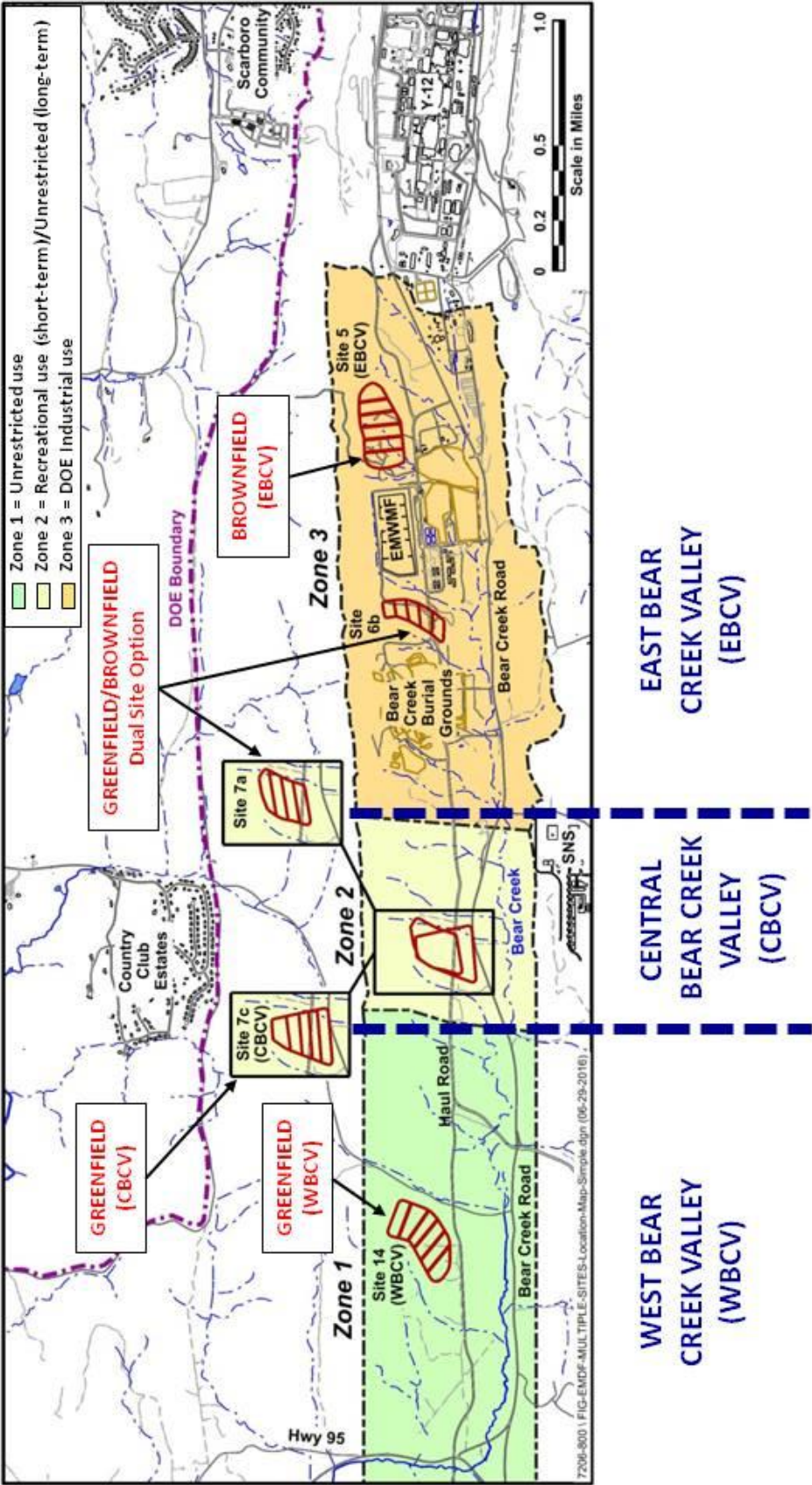
- **July - October 2016:** DOE, EPA, and TDEC will have joint interaction with the City of Oak Ridge representatives to discuss the Proposed Plan and project and work through alternatives.
- **October - December 2016:** OREM plans to conduct three (3) public meetings/work sessions about the proposed EMDF. These meetings will be scheduled when the Proposed Plan is released. At that time, OREM will be able to discuss the alternatives and details surrounding the project with local residents and stakeholders. OREM will work to raise awareness and invite community members to these meetings through a combination of outreach venues. All upcoming DOE public meetings will be highlighted in the local newspapers and on OREM's website and social media accounts. Additionally, OREM will reach out to community leaders in the areas closest to the onsite alternatives to enhance outreach through word of mouth. OREM has developed a working relationship with these leaders through previous meetings and tours after concerns were raised about the project from some in the Scarboro community in 2015.
- **To be determined:** OREM has already met with residents from the Scarboro community on several occasions. They will also be able to obtain additional information at the planned public meetings/work sessions prior to and following the release of the Proposed Plan. However, OREM is also open to meeting with residents from this area again if they desire. OREM will inform the Scarboro community leaders about any upcoming meetings regarding the project. OREM will also provide postings online and in the local newspapers. OREM will rely on feedback received from residents through email, phone calls, or at the scheduled public meetings to determine if additional meetings are needed.
- **To be determined:** Upon a request from the residents of the Country Club Estates, OREM will conduct interactions or a meeting to provide information about the EMDF project. These residents can obtain additional information at the public meetings/work sessions prior to and following the release of the Proposed Plan. OREM will conduct a meeting specifically for these residents if they desire. OREM will publicize any upcoming meetings regarding the project in online postings and the local newspapers. OREM will rely on feedback received from residents through email, phone calls, or at the scheduled public meetings to determine if additional meetings are needed.

CERCLA Public Involvement Opportunities	
Submit EMDF Proposed Plan for Regulatory review	June 2016
Issue Proposed Plan for public comment; hold joint public meeting	October 2016
Allow 45-day public comment period on Proposed Plan	November-December 2016

Project Completion (Record of Decision signed), additional small and large group interactions as opportunities are identified	August 2017
---	-------------

## **APPENDIX A.**

### **LOCATIONS IDENTIFIED FOR ONSITE DISPOSAL ALTERNATIVES**





## **APPENDIX B.**

### **U.S. DEPARTMENT OF ENERGY RESPONSES TO FREQUENTLY ASKED QUESTIONS REGARDING THE ENVIRONMENTAL MANAGEMENT WASTE MANAGEMENT FACILITY AND THE ENVIRONMENTAL MANAGEMENT DISPOSAL FACILITY**

## SELECTING A SITE

### ***1. Who is the approval authority of DOE's disposal facility?***

Regulators from both the Tennessee Department of Environment and Conservation (TDEC) and the U.S. Environmental Protection Agency (EPA) must approve all aspects of the proposed disposal facility. The regulators are involved in an extensive review that includes analysis of design and modeling of the facility and the process by which waste would be accepted. Additionally, the U.S. Department of Energy (DOE) has its own internal mechanisms in place to provide safety oversight and accountability for the design and operation of the proposed disposal area.

### ***2. How is a new disposal facility location selected?***

DOE initially examined 16 sites on the Oak Ridge Reservation to determine their suitability for a disposal facility. Six (6) sites were eliminated for a variety of reasons, including geotechnical considerations. Of the remaining ten (10) sites, four (4) options in Bear Creek Valley were identified for detailed analysis in the revised Remedial Investigation/Feasibility Study (RI/FS). The report will be submitted to State and Federal environmental regulators in August 2016. This process will evaluate onsite and offsite alternatives that will lead to the identification of a preferred alternative in the Proposed Plan for formal public review and comment, followed by a selection of a preferred alternative in a Record of Decision.

### ***3. What technical reports have been written about the new disposal facility, what reports have yet to be written, and will these reports be accessible to the public?***

DOE produces a number of documents throughout the process of planning for this kind of project. The RI/FS is a detailed report that examines the justification for a disposal facility, and it develops and evaluates options for disposal including alternatives to building an onsite facility. DOE is currently working on this report with State and Federal regulators and hopes to finalize the document in the summer of 2016.

Subject to approval of the RI/FS by TDEC and EPA, DOE will develop a Proposed Plan for the waste disposal facility. This document presents a site recommended by DOE, EPA, and the State of Tennessee. This document will be available for public comment. Comments will be addressed in the Record of Decision, a document that records the final decision for site selection of the facility. The Record of Decision will be followed by subsequent reports that include design details of the new waste facility at the selected site.

### ***4. Are the proposed sites physically suitable for the new disposal facility?***

DOE will only consider sites that are suitable for the safe operation of a new disposal facility. Modern engineering technologies make it possible to design and safely operate facilities at the sites selected for consideration on the Oak Ridge Reservation. As evidence, DOE has

safely operated the current waste disposal facility for nearly 15 years without impacting local residents or human health. There is a virtual universal agreement among technical experts familiar with disposal facility construction so a new facility can be designed and operated safely. The RI/FS will evaluate and compare the onsite alternatives and designs.

**5. *What are the key differences in the alternative sites listed in the RI/FS?***

DOE examined 16 sites on the Oak Ridge Reservation to identify the best locations based on geological characteristics and identified four (4) potential locations in the Bear Creek Valley for the disposal facility. Together, these locations comprise four (4) onsite alternatives:

- The East Bear Creek Valley option contains enough capacity to complete Oak Ridge's cleanup, and it is already in a designated brownfield land-use area. Additionally, the site is close to the current disposal facility's infrastructure. The total lifetime estimated cost is \$717 million.
- The West Bear Creek Valley option also contains enough capacity to complete Oak Ridge's cleanup; however, it is in a forested area with a greenfield end land-use designation. It is removed from the current disposal facility's infrastructure which increases costs. The total lifetime estimated cost is \$733 million.
- The dual site option requires two (2) disposal areas to reach the capacity levels required to complete Oak Ridge's cleanup. One of the sites is located in a brownfield area, and the other is in a greenfield designated area. Additionally, only one (1) of the two (2) sites is in close proximity to the current disposal facility's infrastructure. It is the most expensive onsite alternative with a total lifetime cost estimated at \$900 million.
- The Central Bear Creek Valley option is an extension of one of the proposed dual site options, the one located in a greenfield designated area. This site requires rerouting Bear Creek Road, but it is able to provide the needed capacity to complete the ORR cleanup in a single footprint. The total lifetime estimated cost is \$715 million.

**6. *Will DOE test the earth underneath the disposal facility to ensure it will permanently contain the waste?***

Yes. DOE will develop a detailed design for the new disposal facility that includes comprehensive data on the site's characteristics. This data will be used to determine how groundwater flows in, around, and through the site; the volume and direction in which contaminants might move; the best elevation to place the waste; precautions that protect against accidents and natural events; and how best to protect water, the public, and ecological receptors.

**7. *Are there any sink holes around the current disposal facility or potential sites identified for the future disposal facility?***

DOE has found no evidence of sink holes at the current disposal facility or at sites being considered for a possible future disposal facility. When considering sites for existing and future disposal facilities, locations on the Oak Ridge Reservation that have Karst formations

where sink holes could be found have been specifically avoided. In the event an onsite location is identified as the preferred recommendation for a new waste facility, DOE will collect extensive data to confirm that sink holes are not present.

## **PUBLIC SAFETY**

### ***8. How close will the disposal facility be to the public? Can the public access it? Is the public protected?***

While DOE has not yet selected the preferred site, the onsite alternative that is closest to residents is approximately 0.8 miles. At all locations, a large ridge keeps the sites physically isolated from the public. The ridge serves as a groundwater divide. Engineering design will prevent releases from the disposal facility; however, should a release occur, water flow on the side of the ridge containing the facility is directed away from residential areas due to the natural groundwater divide. It will be located on DOE property with no plans to allow public access to the area.

The more significant health risk to the public is the high number of contaminated buildings exposed to the environment at the nearby Y-12 plant. Located 0.1 miles from the closest Oak Ridge community, these buildings have deteriorated to the point that some have been condemned due to their unsafe condition. The new waste disposal facility will make it possible for DOE to tear down these buildings, address the contaminated soils and groundwater located beneath them, and remove their environmental risk to the community. It will also clear the way for DOE to access and address the contaminated soil and groundwater beneath those facilities.

### ***9. How would the disposal facility design protect the environment?***

The proposed disposal facility has several features designed to protect the environment. Approximately 15 feet of protective liners and other material will be constructed beneath the waste. Storm water that comes in contact with the disposal facility and is shed from the cover system or collected in a cell that has not received waste will be monitored for signs of contamination. If needed, water that comes in contact with the waste will be treated before released into the environment.

When the disposal facility is completely filled, it will be covered by a multi-layer cap composed of low-permeability clays and synthetic sheeting. The engineering design will greatly reduce percolation of rain water into and through the waste. The top of the cap will be a four (4)-foot thick erosion control layer of soil and grasses that provide further protection. During operations, and for many years after it is closed, water that contacts the waste will be captured and treated, if needed, to remove contaminants. Water will not be discharged to the environment prior to meeting all applicable regulatory standards.

### ***10. What long term measures will be in place to ensure the disposal facility remains safe?***

If an onsite disposal facility alternative is selected, it will be monitored as long as waste remains in place that could pose any risk to human health or the environment. Additionally, if any release is detected, actions will be triggered to ensure these releases are addressed and removed immediately.

***11. What environmental impacts will the new disposal facility create?***

Depending upon the preferred site, forested areas, seeps, springs, a small stream, and wetlands could be eliminated when the disposal facility is constructed. As an offset, new wetlands will be recreated in another location. During construction and operation, storm water and sedimentation will be controlled to prevent impacts to natural stream environments.

***12. In what direction does the water under the proposed waste facility travel?***

Ground and surface water in Bear Creek Valley, where the existing disposal facility and proposed disposal facility sites are located, travels into Bear Creek and then west towards the Clinch River. The water moves away from the center of Oak Ridge.

***13. How will you treat mercury in the disposal facility?***

Strict regulations prevent the placement of mercury-contaminated waste in the landfill prior to proper treatment. Several processes will be used to treat the mercury before disposal, but in all cases, the concentration of mercury must be below safe levels before being disposed in the landfill.

***14. Will the disposal facility slump? How will it react to earthquakes?***

As waste is received, it will be mixed with soil to fill voids and compacted with heavy equipment so that empty spaces are filled. This process greatly reduces the possibility of future slumping. DOE has monitored the current site since its construction and observed only minimal subsidence that would be expected in a disposal facility of this type.

The ability of a disposal facility to withstand effects of an earthquake is considered in detail during design. The design will be tested in models and adjusted as needed to account for such occurrences. DOE will make any adjustments needed to accommodate the stresses placed on the disposal facility's features.

**OPERATION OF THE WASTE FACILITY**

***15. Will the new disposal facility be built and operated like the existing facility?***

The new disposal facility will operate with the same safety standards as the existing one. Like the current facility, the new Environmental Management Disposal Facility (EMDF) will have a specially-engineered liner system and other protective features that will isolate waste

from the groundwater. When the facility is full and operations cease, a permanent cover (consisting of clay, rock, and geosynthetic material) will be placed on top of the waste. The cover will isolate the waste and prevent storm water from passing into the waste.

The current disposal facility has operated safely for nearly 15 years. During this period, OREM has developed new procedures for operational items such as piping size, the placement of equipment, and the movement of water. The lessons OREM has learned at the current facility will enable us to implement new procedures to strengthen the safety and efficiency of the new facility.

***16. At the existing disposal facility, what water do the workers drink?***

Workers at the Environmental Management Waste Management Facility (EMWMF) use the same water as Oak Ridge residents. There is not a separate water supply for the workers at DOE facilities.

***17. At the existing disposal facility, when and how long are the workers there?***

A staff of approximately 40 people operates the disposal facility 4 days per week with 10-hour shifts. Additional personnel are on call around the clock in case of an emergency. Security is always present at the site.

***18. What facilities will be disposed of in the new disposal facility?***

The current disposal facility is large enough to accept the remaining waste generated from cleanup activities at the East Tennessee Technology Park. When that work is completed in 5-7 years, approximately 350 facilities at the Y-12 National Security Complex (Y-12) and Oak Ridge National Laboratory (ORNL) must be removed. The large majority of the debris from this work will be disposed onsite. As is the case with the current disposal facility, highly contaminated waste that does not meet waste acceptance criteria will be shipped to repositories in western states. Oak Ridge's disposal facility will not receive waste from other cities or states.

***19. Will the disposal facility be big enough to handle all future DOE clean-up wastes?***

Yes, DOE has a sound estimate of the facilities and waste volume that needs to be housed in a new disposal facility. It will be designed with sufficient capacity to accept all remaining waste from environmental cleanup of the Oak Ridge Reservation. This will be the last disposal facility that OREM will construct to complete its cleanup mission at the site.

***20. Are there any efforts to reduce the volume of wastes?***

DOE practices a hierarchical volume-reduction process when completing a cleanup project. Materials are recycled or reused if possible. The wastes generated during a demolition are characterized to determine if some portion can be placed in other disposal areas. For example, some debris may be placed in another landfill that accepts nonhazardous solid



waste while other wastes that have contaminants or levels of contaminants not acceptable at the EMDF will be disposed offsite at appropriate facilities. DOE's requirement is to dispose only of waste that meets the acceptance criteria. Additionally, OREM works to sequence the disposal of different types of waste (such as building debris, concrete, and soil) in an order that allows maximum efficiency and requires less space.

***21. How will DOE ensure that only acceptable wastes are disposed?***

The disposal facility will employ a stringent waste acceptance process that sets specifications for disposal. The specifications are agreed upon and regulated by the State of Tennessee. A team of technical experts ensures that wastes accepted at the disposal facility meet regulatory requirements and all results are documented.

***22. Are the contaminants that will go into a new disposal facility different from those in the existing disposal facility?***

The contaminate waste disposed in the new disposal facility will include only low-level and mixed low-level waste, similar to wastes in the existing disposal facility. The current facility has been focused primarily on safely storing building demolition debris, equipment, and soils from the East Tennessee Technology Park. The new facility will receive similar wastes from cleanup activities at Y-12 and ORNL. Contaminants associated with these sites include mercury, as well as residual radioactivity and chemicals utilized during former research and production activities in Oak Ridge. As is the case with the current facility, more hazardous wastes will continue to be shipped to repositories in western states. The EMDF will only accept CERCLA waste originating for DOE's work in Oak Ridge. It will not accept any waste from industry or other DOE sites across the country.

***23. Who samples the water that is discharged from the existing disposal facility's operations?***

The disposal facility's operating contractor samples the water before it is discharged to ensure release limits set by the State of Tennessee are met. The water is sampled again before entering Bear Creek. An independent commercial company is responsible for verifying the results. The State of Tennessee conducts random sampling and analysis to confirm releases are within established limits.

***24. Is the existing disposal facility prepared for severe weather?***

EMWDF workers are highly trained and have experience dealing with severe weather events. Standard practice keeps water storage ponds and tanks as empty as practicable to maintain a high margin of safety for unforeseen weather events. Facility infrastructure is designed with specific consideration given to severe weather.

***25. How long will the cap and liner last?***

The synthetic sheeting materials used in the liner and cap have been thoroughly tested and can be expected to last for several centuries. The compacted clay layers of the cap are

expected to remain effective for as long as needed. To ensure that liners and caps are installed correctly and to the manufacturer's specifications, a quality assurance contractor will oversee the installation of these layers.

**26. *How long will the disposal facility's underdrain and surface water drains last? Will they clog?***

Drainage layers are composed of appropriate diameter rock, selected for its resistance to weathering to ensure the rocks do not crumble or dissolve over time. The underdrains and surface water drains are layered with graded diameter material (sand, gravel-sized rock, larger rock) that reduces the chance of clogging. Appropriately built drainage layers will last indefinitely.

**27. *How much will it cost to build and operate the disposal facility?***

The disposal facility will be built in phases and with a full capacity of six (6) cells. The East Bear Creek option has a total estimated cost of \$717 million. Subject to design and location, the first and most expensive phase contains the disposal facility's infrastructure and the initial two (2) cells at an estimated cost of \$125 million. Phase II is estimated to cost \$44 million. Phase III is estimated to cost \$31 million, with closure of the facility estimated to cost \$65 million. Once open, operation of the facility will cost approximately \$15 million annually.

The West Bear Creek option has a total estimated cost of \$733 million. The dual site option has a total estimated cost of \$900 million. The Central Bear Creek option has a total estimated cost of \$715 million. A hybrid option, which entails a smaller onsite disposal facility with a majority of the waste being shipped offsite, has a total estimated cost of \$1.37 billion. Finally, shipping all of the waste offsite is estimated to cost \$1.57 billion.

**28. *How will the new disposal facility impact Oak Ridge and surrounding communities?***

The new landfill will have a positive environmental and economic impact on Oak Ridge and the surrounding communities. Completion of cleanup activities at Y-12 and ORNL will improve the community's environmental quality and support the missions of the region's two (2) largest employers. Continuation of DOE's cleanup program will sustain thousands of existing jobs, create new jobs for the construction of the waste facility, and generate approximately \$17 million in annual tax revenues for Oak Ridge, Anderson, Knox, and Roane counties.

Specifically, the proposed onsite disposal facility adds significant economic impact to the Oak Ridge community by providing high-quality jobs and boosting local tax revenues. A second disposal facility is anticipated to support 6,800 jobs over the life of the project, with 5,700 of those jobs originating in Anderson, Roane, and Knox counties. An additional \$54 million in sales tax revenues are expected to be generated from the purchasing of goods and services needed in the design and construction of the disposal facility.

***29. Why doesn't DOE just send the waste out of state?***

OREM believes onsite disposal is the best option for a variety of reasons. Transporting the waste by truck more than a thousand miles would add enormous cost (estimated at more than one [1] billion dollars), greatly increase the risk of transportation accidents, and extends current cleanup schedules by decades. Out of state disposal would result in substantial reduction of jobs and tax revenues in the area economy. Perhaps most important, attempting to dispose of waste in other states would place Oak Ridge at the mercy of communities and elected officials who could suddenly and arbitrarily halt waste shipments. The ability to manage cleanup activities in Tennessee with the Tennessee officials has been a critical aspect of our success.



## Record Copy Distribution

1. Sue Cange, Manager, U.S. Department of Energy Oak Ridge Office of Environmental Management
2. John Michael Japp, U.S. Department of Energy Oak Ridge Office of Environmental Management
3. Patricia Halsey, U.S. Department of Energy Oak Ridge Office of Environmental Management
4. Melyssa Noe, U.S. Department of Energy Oak Ridge Office of Environmental Management
5. David Adler, U.S. Department of Energy Oak Ridge Office of Environmental Management
6. Colin Colverson, Attorney Advisor in Office of Chief Counsel, U.S. Department of Energy Oak Ridge Office
7. Mike Koentop, Executive Officer, U.S. Department of Energy Oak Ridge Office of Environmental Management
8. Ben Williams, Public Affairs, U.S. Department of Energy Oak Ridge Office of Environmental Management
9. Kristen Ellis, U.S. DOE-HQ, EM 3.2
10. Letitia O'Connor, U.S. DOE-HQ, EM-11
11. Connie Jones, U.S. Environmental Protection Agency Region 4, 61 Forsyth Street, SW, FFB, Atlanta, GA 30303-3415
12. Jeff Crane, U.S. Environmental Protection Agency Region 4, 61 Forsyth Street, SW, FFB, Atlanta, GA 30303-3415
13. Chris Thompson, Director, Tennessee Department of Environment and Conservation Division of Remediation Oak Ridge Office, 761 Emory Valley Road, Oak Ridge, TN 37830-7072
14. Randy Young, FFA Manager, Tennessee Department of Environment and Conservation Division of Remediation Oak Ridge Office, 761 Emory Valley Road, Oak Ridge, TN 37830-7072
15. Ken Rueter, President and Project Manager , URS | CH2M Oak Ridge LLC
16. Belinda Price, Chair, Oak Ridge Site Specific Advisory Board
17. DOE Information Center in Oak Ridge
18. Center for Environmental Management Information, DOE, Washington, DC 20585
19. Warren L. Gooch, Mayor, City of Oak Ridge
20. Ron Woody, County Executive, Roane County, TN
21. Terry Frank, Mayor, Anderson County, TN
22. Tim Burchett, Mayor, Knox County, TN
23. Buddy Bradshaw, Mayor, Loudon County, TN
24. File—EMEF DMC—RC



U.S. DEPARTMENT OF  
**ENERGY**

**Oak Ridge Office  
of Environmental  
Management**