



Energy Keepers, Inc.



Energy Keepers, Inc.

Sélish Ksanka Q'ispé
Project is located on a
significant sight from
cultural, religious, and
resource perspectives



Lower Flathead
River Before SKQ
Dam

Sélish Ksanka Q'lispe Dam



- A 200 foot high, 381 foot long concrete arch dam
- 208 MW facility producing 1.1M mwh/yr
- SKQ' s reservoir is the top ten feet of Flathead Lake with 1.2 MAF

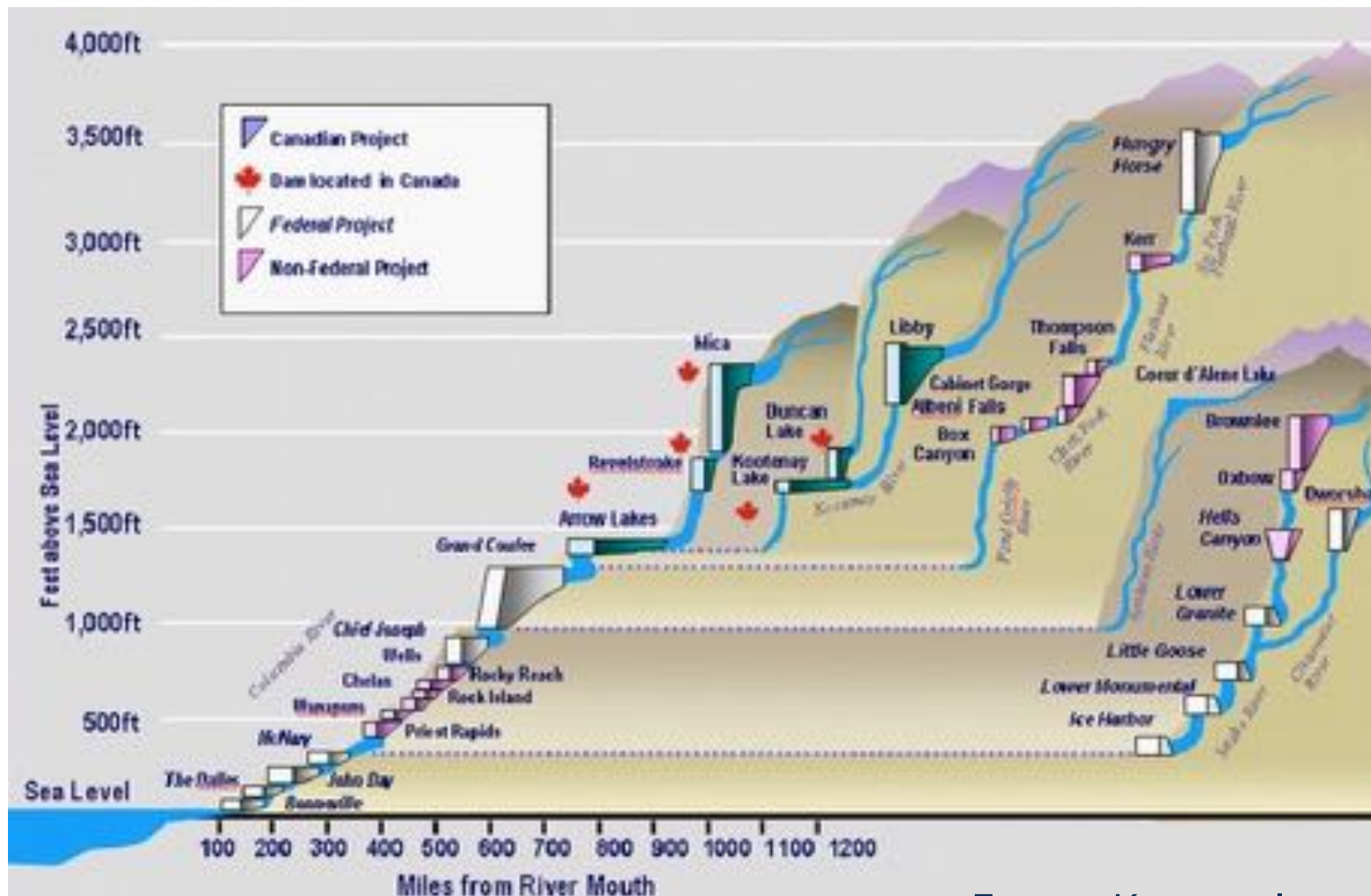


10/25/16



- SKQ is part of the Columbia River basin flood control system coordinated through the Pacific Northwest Coordination Agreement.
- Recent engineering and safety studies indicate the facility is in good operating order and has an expected useful life that exceeds the balance of the FERC license term (i.e. 2035)

SKQ is a part of the Columbia Hydroelectric Resource Base



10/25/16

Planning Acquisition for 30 Years

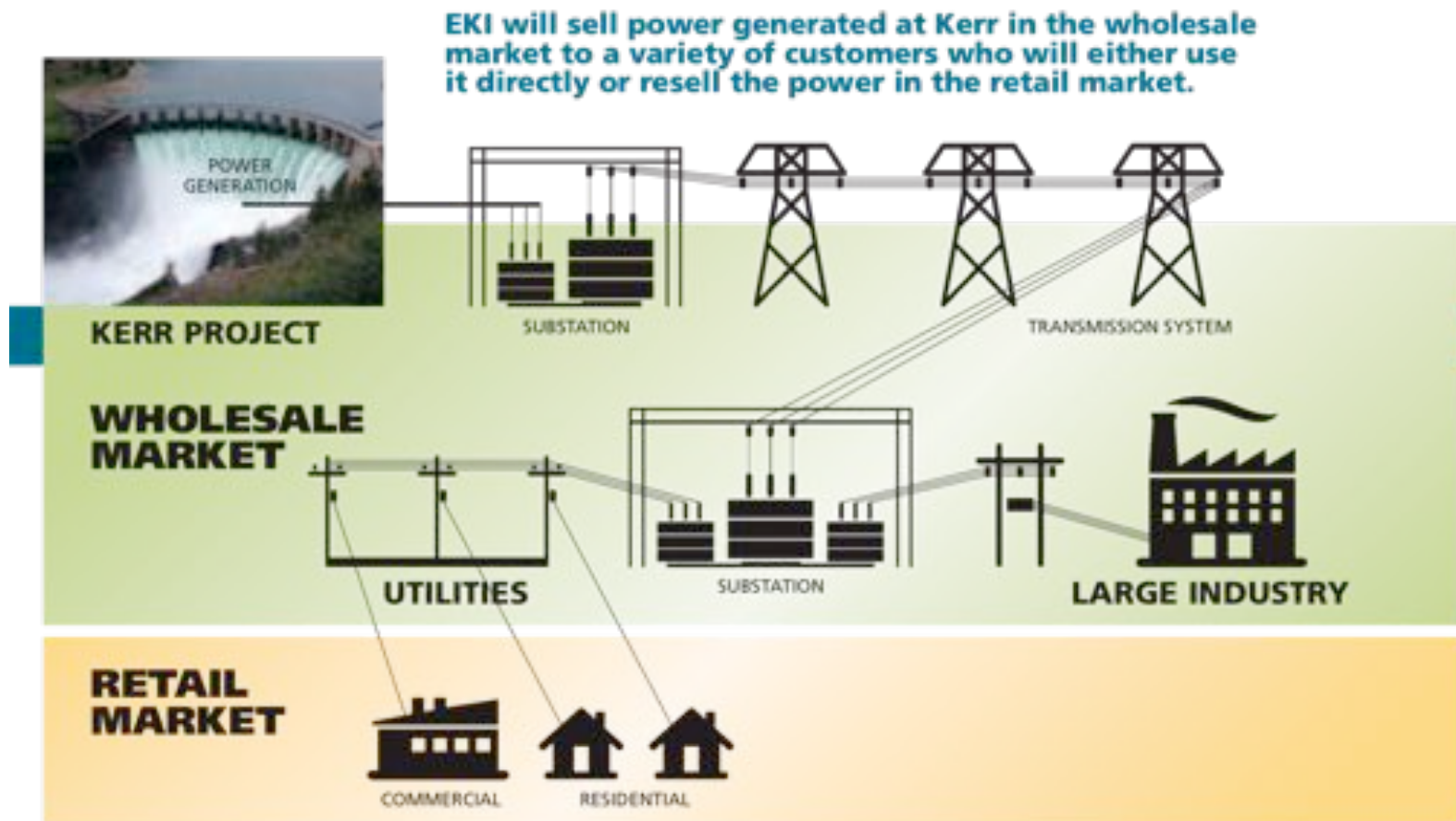
Kerr History



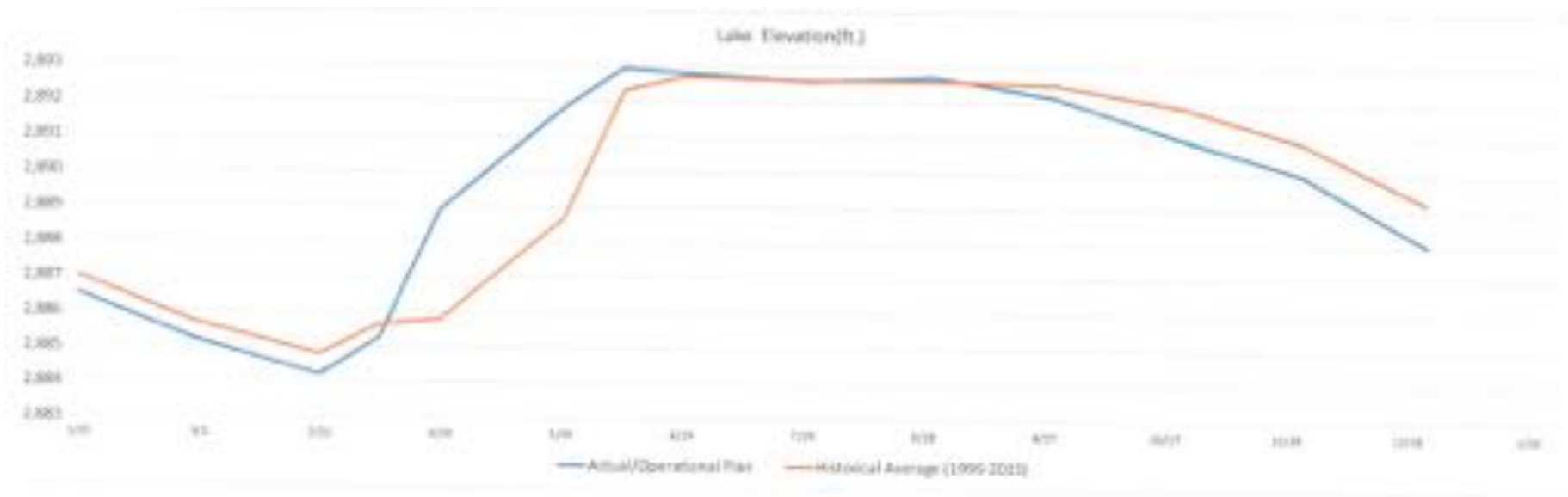
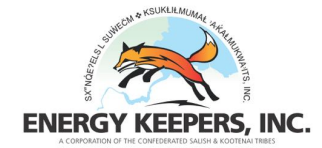
- **The Kerr Project was developed as result federal assimilation polices implemented on the Flathead Indian Reservation from 1908-1934**
 - Allotting of the land
 - Creation of the Flathead Indian Irrigation Project (irrigation and power)
 - Development of power sites by non-Indian business entities
- **1921** Applications are filed for licenses to develop five power sites on the Flathead River within the Flathead Reservation.
- **1930** The Federal Power Commission issued the first 50-year license to the Rocky Mountain Power Company for the Kerr Dam site.
- **1939** Rocky Mountain Power Company transferred its interest in the License to the Montana Power Company ("MPC"). Kerr Dam began producing power.
- **1976** CSKT filed a competing application with the Federal Energy Regulatory Commission ("FERC") for relicensure of Kerr .
- **1980** The first license expired and FERC issued a series of one-year licenses to MPC.
- **1985** the Tribes successfully negotiate co-licensee status with the MPC and the option to acquire Kerr as the sole owner in 2015. New License issued to MPC and CSKT for a 50-year term through 2035.
- **1999** PPL Montana (PPLM") acquires Kerr from MPC and FERC transfers MPC's License interest to PPLM.
- **2015** CSKT exercised its exclusive and unilateral right to acquire Kerr through Energy Keepers Inc.

EKI Business Model

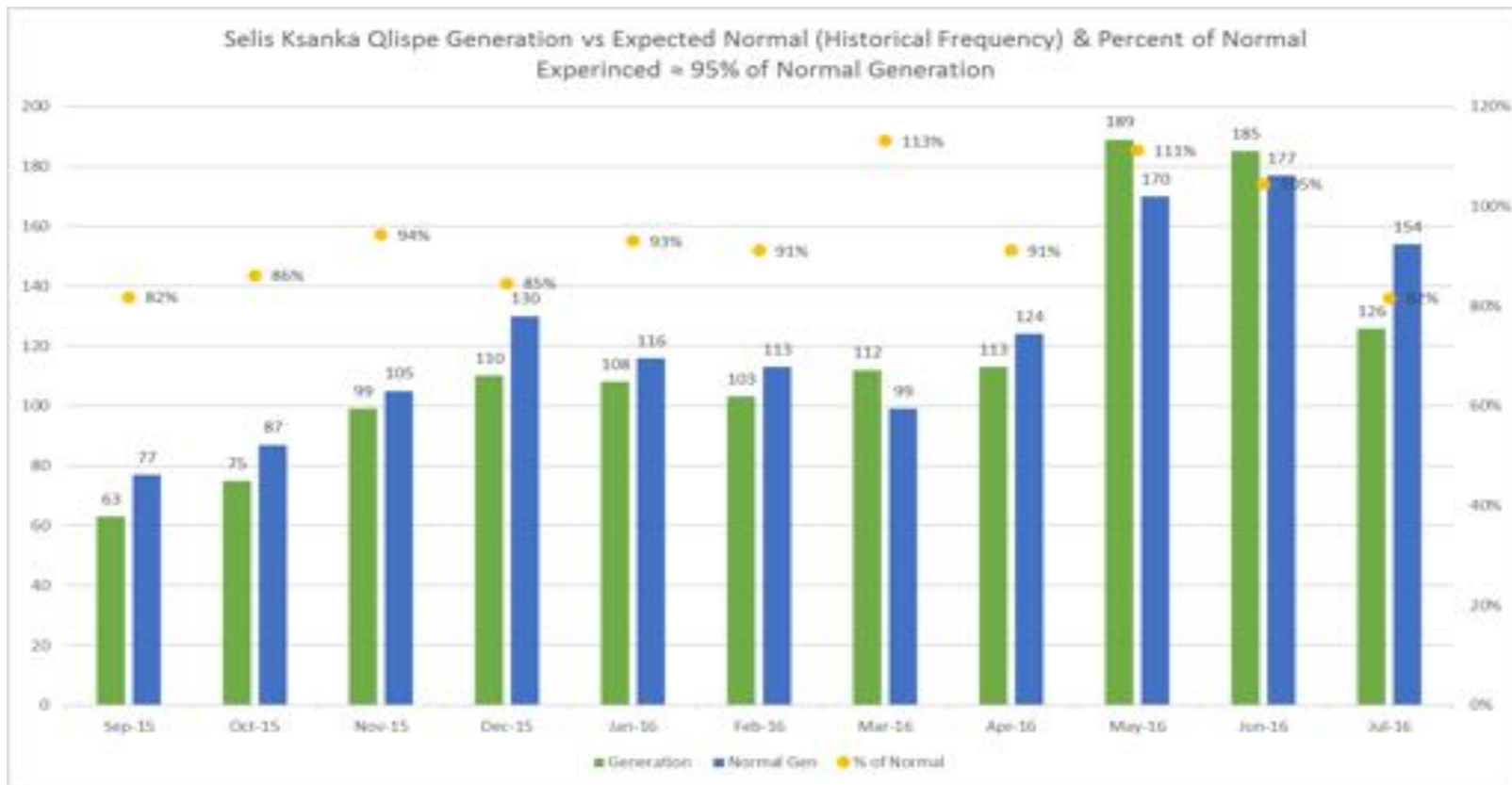
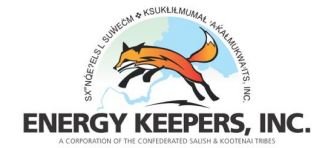
Independent Power Producer (IPP)



Successful Resource Mgmt



Production



Finance Need



- Overall Investment
 - Startup
 - Project
 - Reserves
- Tribal Investment
- Initial pursuit of revenue bond
- Line of Credit

Essential Financing Elements



- Tribal Commitment
- Sound corporate structure
- Project needs to pencil out
 - Pro Forma
 - Stress testing



Questions?