

Welcome

SSL Technology Development Workshop

November 16, 2016

James R. Brodrick, Ph.D.

Lighting Program Manager
U.S. Department of Energy

Recent Headlines

The Washington Post

Some cities are taking another look at LED lighting after AMA warning



LED meets the cosmos - space station gets circadian boost

ELECTRICAL CONTRACTOR
POWER & INTEGRATED BUILDING SYSTEMS

Smart Cities: LEDs take cities and utilities into the future

HEALTH FACILITIES
MANAGEMENT

Tunable white light for health care spaces

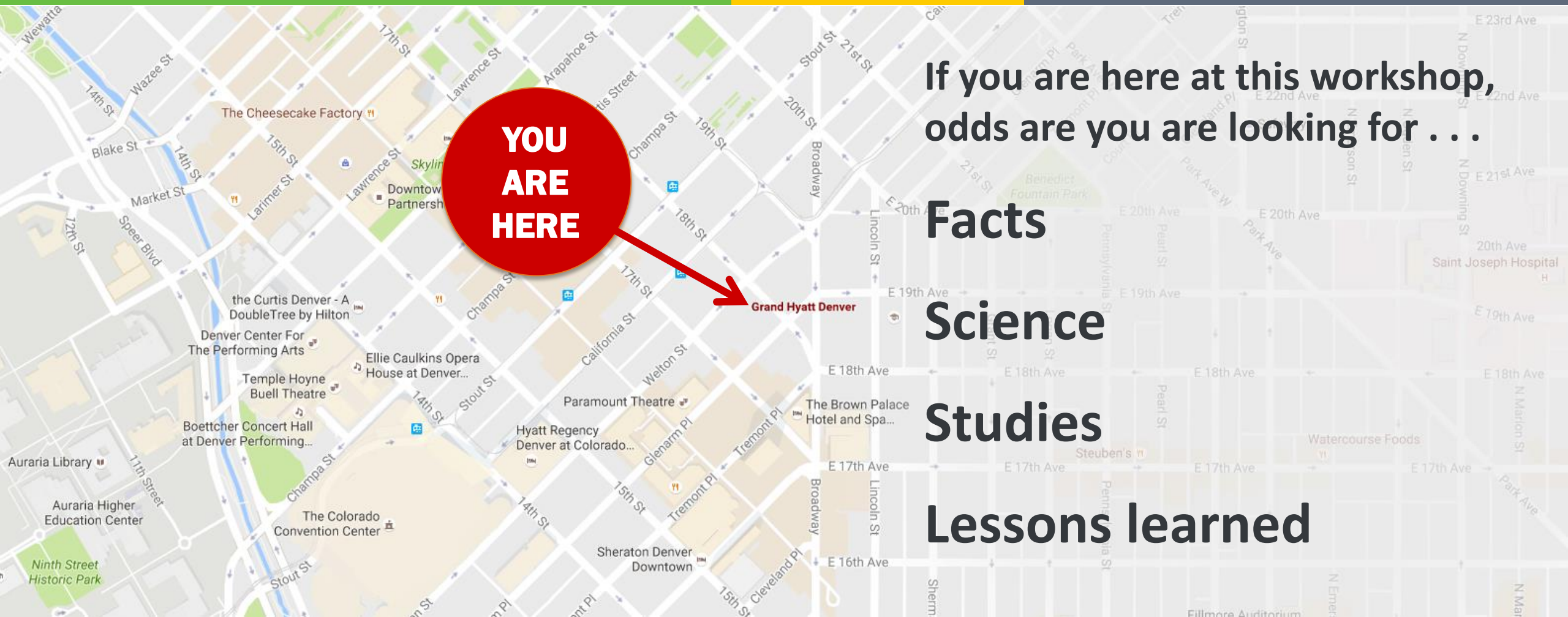
BUILDINGS SMARTER FACILITY MANAGEMENT

Think Outside the Troffer

TRANSMISSION & DISTRIBUTION
WORLD

Early LED Street Lighting Causing Light Pollution, Glare

Science, Not Sound Bites



If you are here at this workshop,
odds are you are looking for . . .

Facts

Science

Studies

Lessons learned

25 Experts | 2 Days | 1 Meeting of the Minds

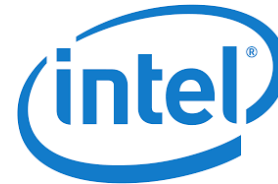
LED Technology Potential



The Rise of TLEDs



Connected Lighting



Tunable Lighting



25 Experts | 2 Days | 1 Meeting of the Minds

OLEDs



Glare



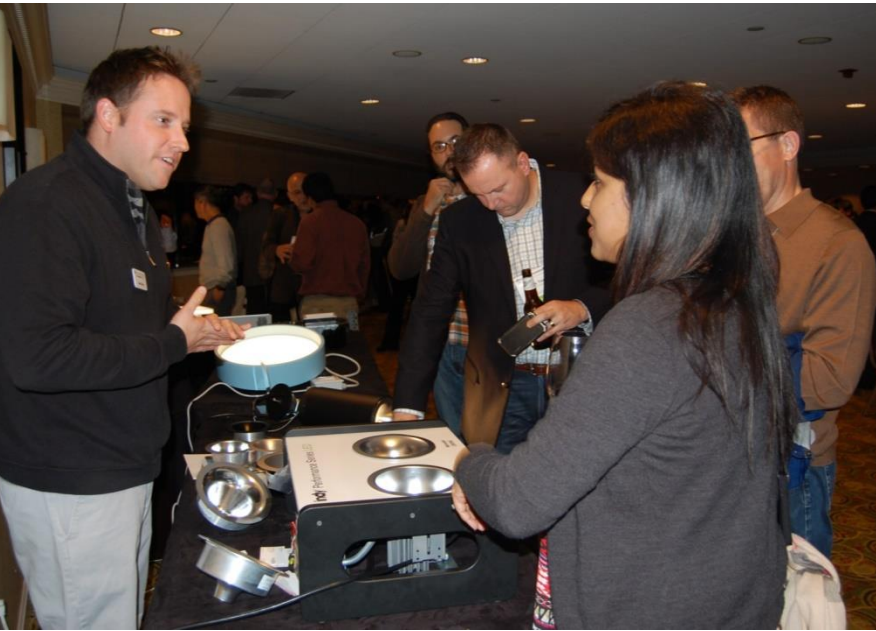
Sky Glow



Outdoor Dimming & Controls



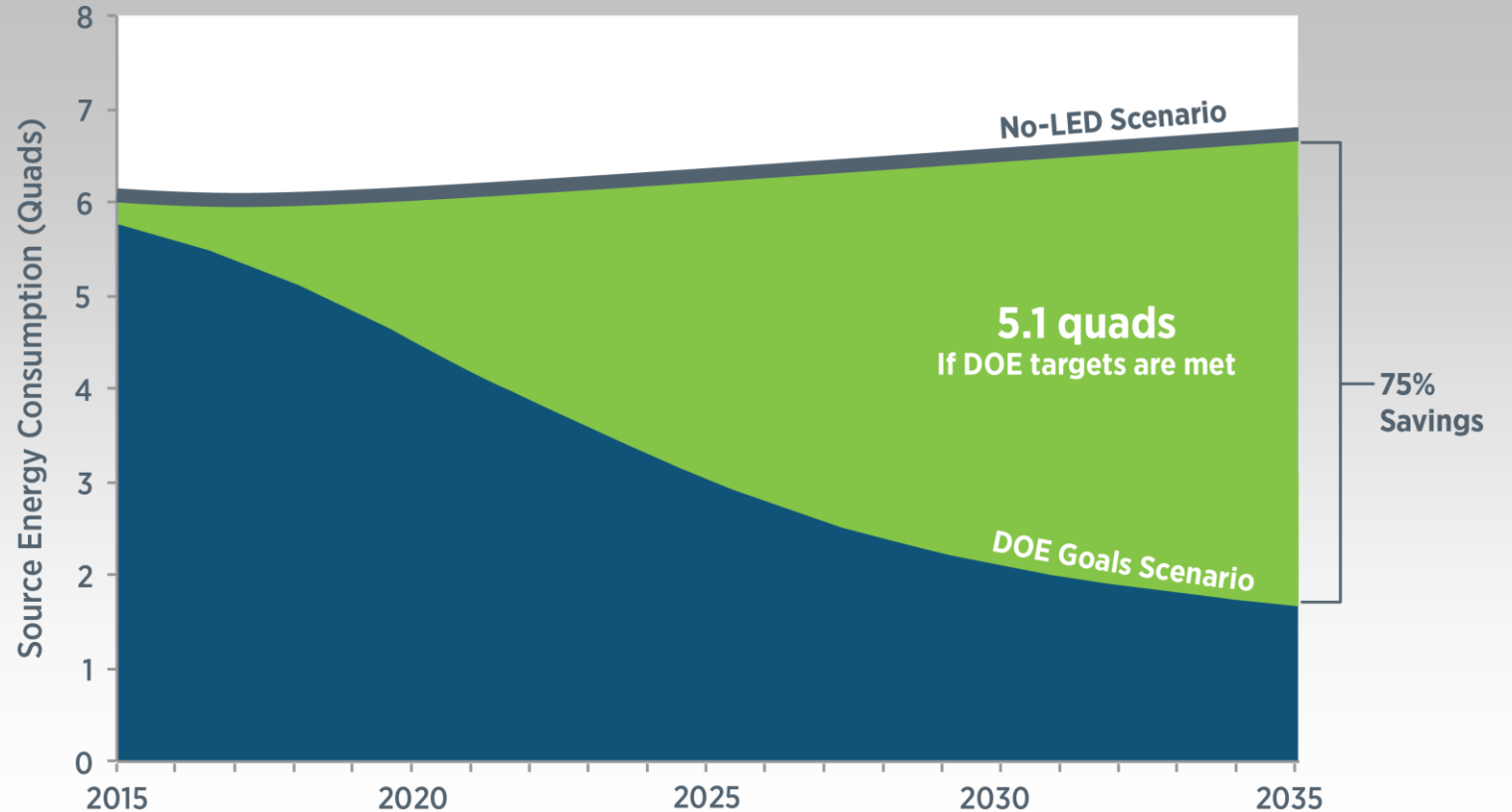
More Opportunities for Discussion



The Big Picture

TURNING **DOWN** LIGHTING ENERGY USE

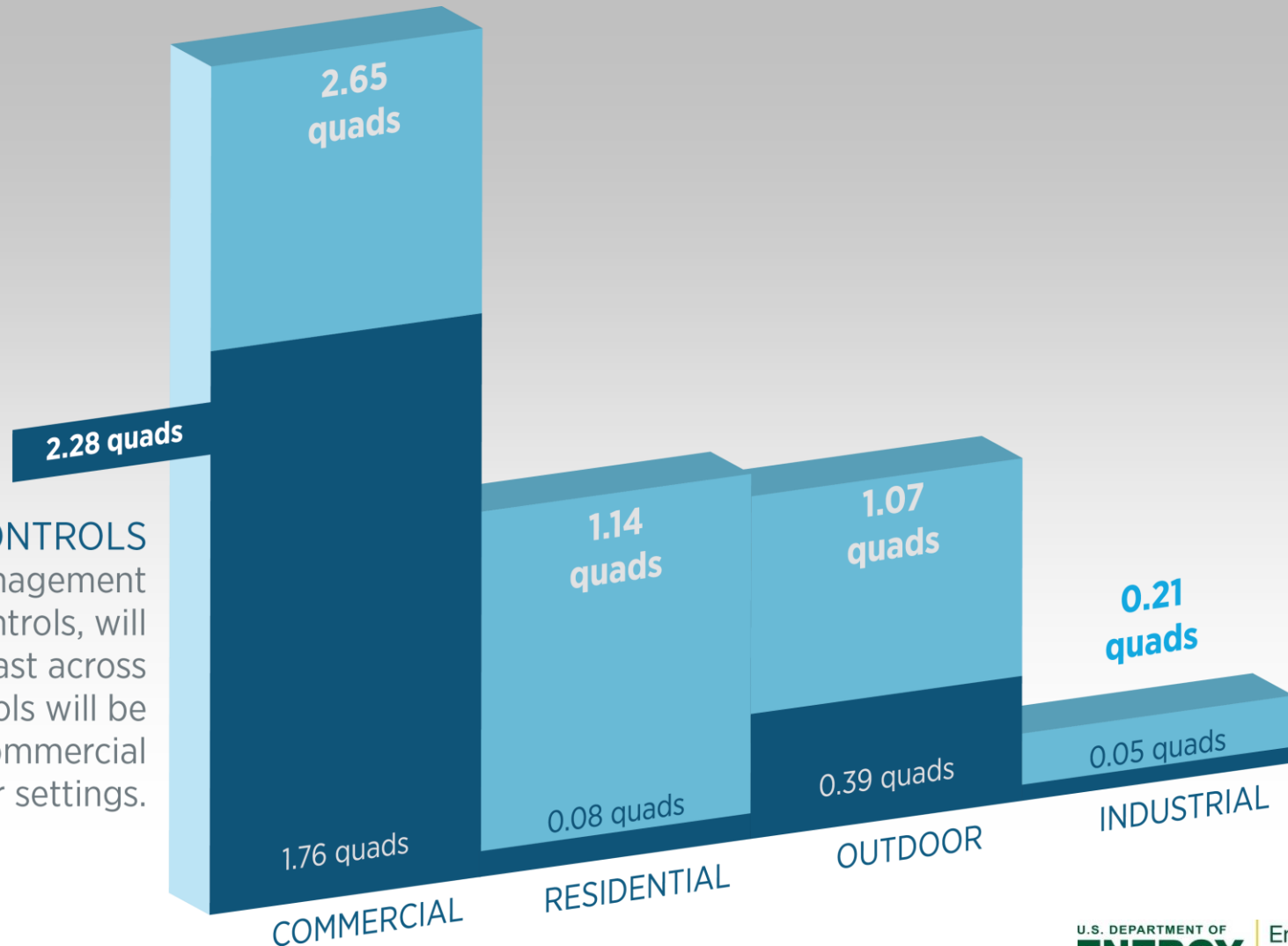
U.S. energy savings attributable to LED lighting will reach 5.1 quads by 2035. Energy use for lighting in 2035 will be **75% lower** than it would have been if LEDs had not entered the market.



Breaking It Down

BREAKING
DOWN
5.1 QUADS
OF **SAVINGS**

CONTROLS
Connected lighting and energy management systems, along with traditional controls, will be essential in realizing the forecast across all sectors. Savings from controls will be enormous for LED luminaires in commercial and outdoor settings.



Facts are stubborn things

and whatever may be our wishes,
our inclinations or the dictates of our passion,
they cannot alter the state of facts and evidence.



~ John Adams

