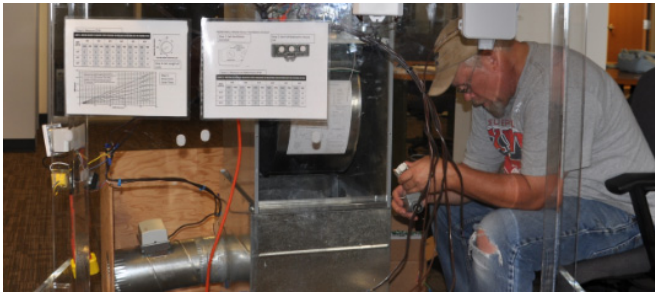


The Better Buildings Residential Network hosts weekly Peer Exchange Calls that connect energy efficiency programs and partners to share best practices and learn from one another to increase the number of homes that are energy efficient. Follow the links below to view full summaries of each call, and visit the [Better Buildings Residential Network website](#) to view a schedule of upcoming Peer Exchange Calls.



**Extend your program’s reach through non-traditional partnerships.** Connect with schools, public event groups, and professional sports teams to demonstrate the benefits of saving energy to a diverse audience.

[Rainbows and Leprechauns: Finding Gold in Partnerships](#) – March 17, 2016  
 Member Highlighted: [Center for Sustainable Energy](#)



**Learning is not one-size-fits-all.** For best results, training programs should engage participants using multiple learning methods, including hands-on activities, role playing, props, videos, quizzes, and templates.

[Training: How to Get Results—What Matters, What Doesn’t](#) – April 14, 2016  
 Member Highlighted: [CLEAResult](#)



**Tap into the energy saving potential of employees at home.** Companies can reach their sustainability goals by educating employees about how they can become energy efficient at home and remove financial barriers through employer-assisted programs.

[Walking the Talk: Employer Assisted Programs](#) – May 19, 2016  
 Members Highlighted: [Clinton Climate Initiative](#), [Vermont Energy Investment Corporation](#)



**If quality is compromised for growth, it can spike costs and jeopardize program success.** Growing and scaling a program is achievable, but maintaining quality will ensure that the customer experience is not compromised in the process.

[Spring Forward: Top Strategies for Growing and Scaling Your Program](#) – May 26, 2016  
 Members Highlighted: [CLEAResult](#), [Building Performance Institute, Inc.](#)

