

# Intelligent Cities

## 2016 DOE Solid-State Lighting R&D Workshop

Himamshu Prasad (HP)

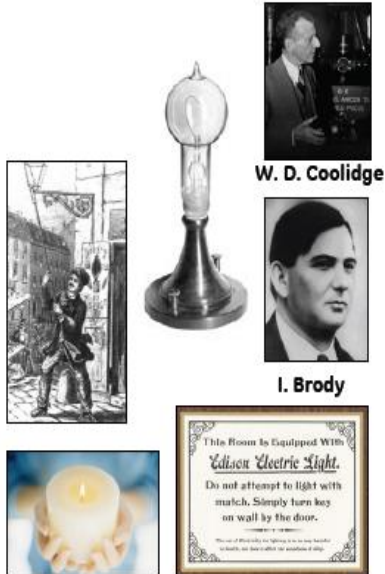
Global Product Manager – Outdoor Controls

GE Lighting



# Lighting Transformation

## 1st Transformation More Light (1879 - 1938)



## 2nd Transformation Greater Efficiency (1938 - 1990s)



## 3rd Transformation Environmental Responsibility (1990s – Present)



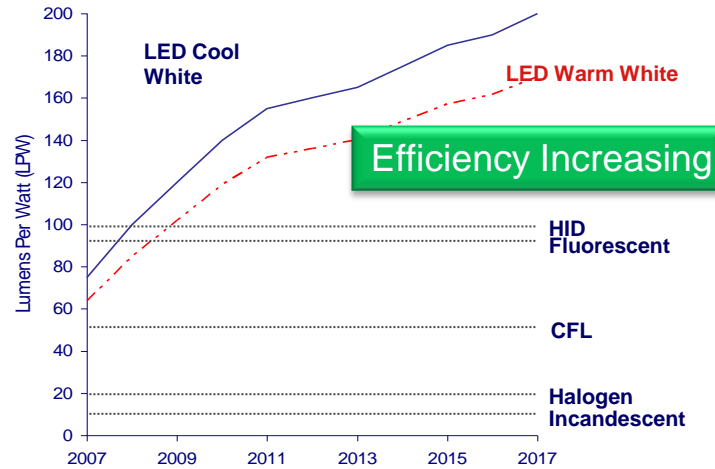
## 4th Transformation Intelligent Applications (2014 - ...)



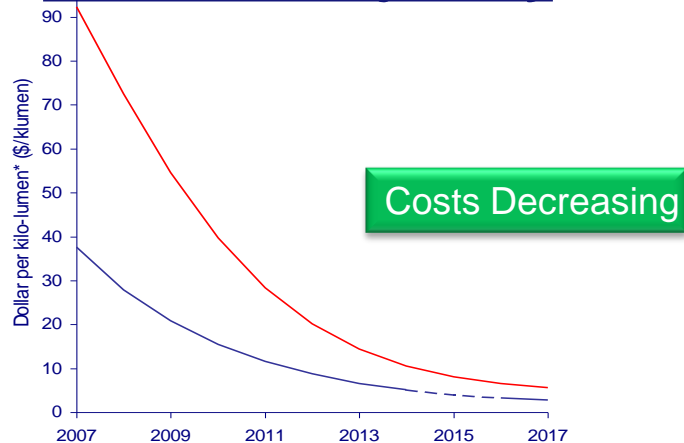
1879 1909 1938 1961 1980's 1990's 21<sup>st</sup> Century



## LED Efficiency Evolution



## LED Cost Trajectory



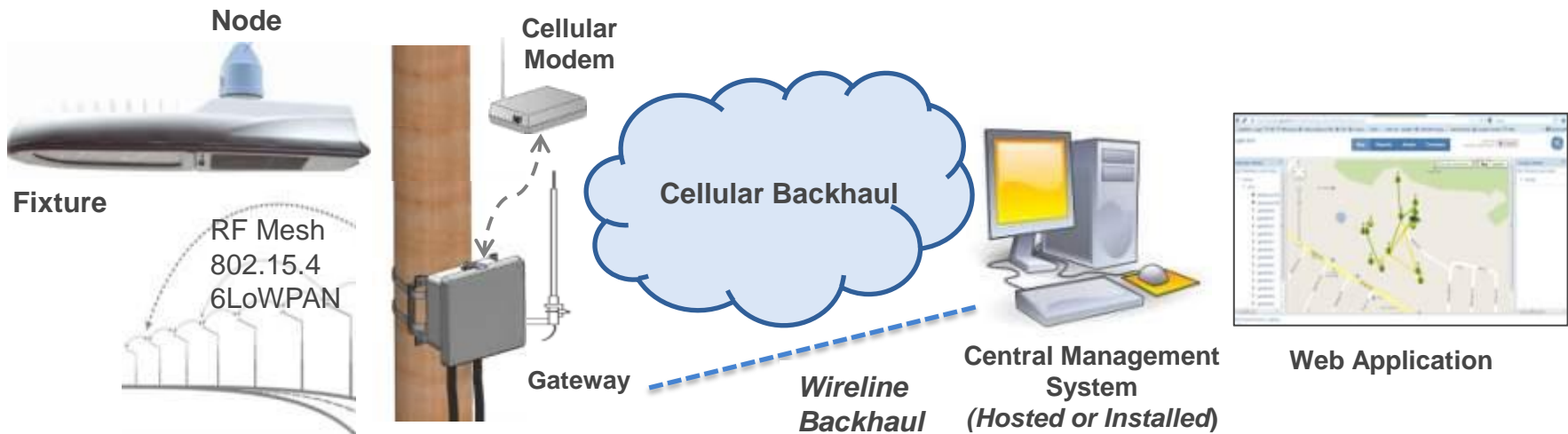
	Conventional	LED
Environment		
Lumen Maintenance 50,000 hrs		
Running Cost (10 Years)		
Initial Cost		
Life		
Uniformity (Light Pollution)		
Vibration		
Efficiency (LPW)		
Energy Consumption (LPD)		
Insect Damage (UV)		



# Lighting Controls

2

- ✓ For remote monitoring, control and operation of all fixtures through a Web-enabled central management system
- ✓ Accurate, utility-grade energy measurement per pole
- ✓ GPS chip embedded into each node and gateway for easy commissioning and asset management



# Cities face some tough challenges.

## Balancing the Budget

Street lighting costs the U.S.  
upward of

**\$8 Billion/Yr**



**131.8 Million**

people live in U.S. counties receiving an  
F for ozone or particle pollution

## Resource Conservation



Together Toward Tomorrow | 2016

## Security & Safety

Lighting accounts for nearly

**1.9 Billion**

Tons of CO<sub>2</sub> per year

Traffic congestion costs the U.S. economy

**\$100 Billion/Yr**



Variation in U.S. economy associated  
with weather variability is estimated at

**\$485 Billion**



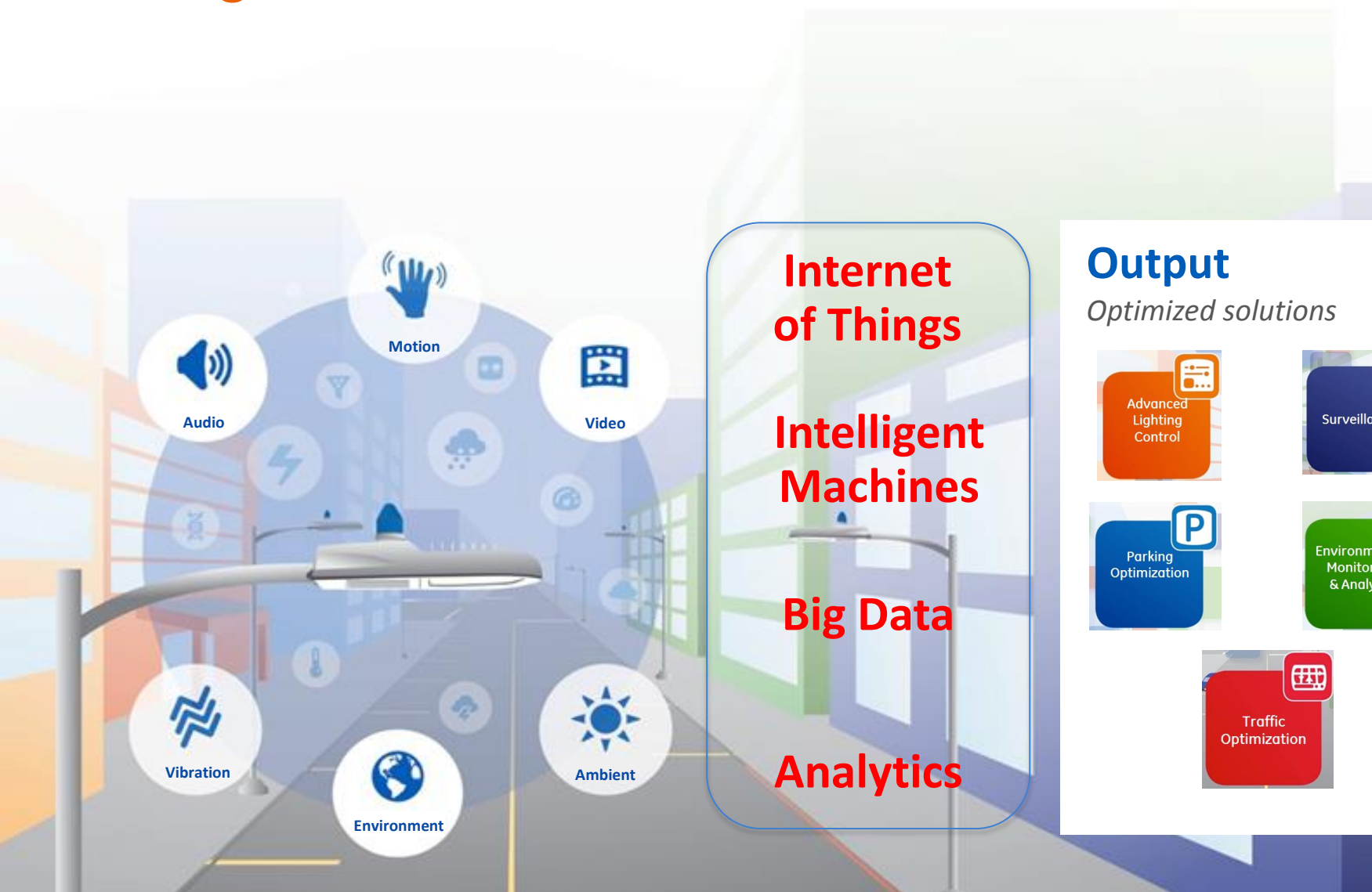
Air pollution causes

**200,000**

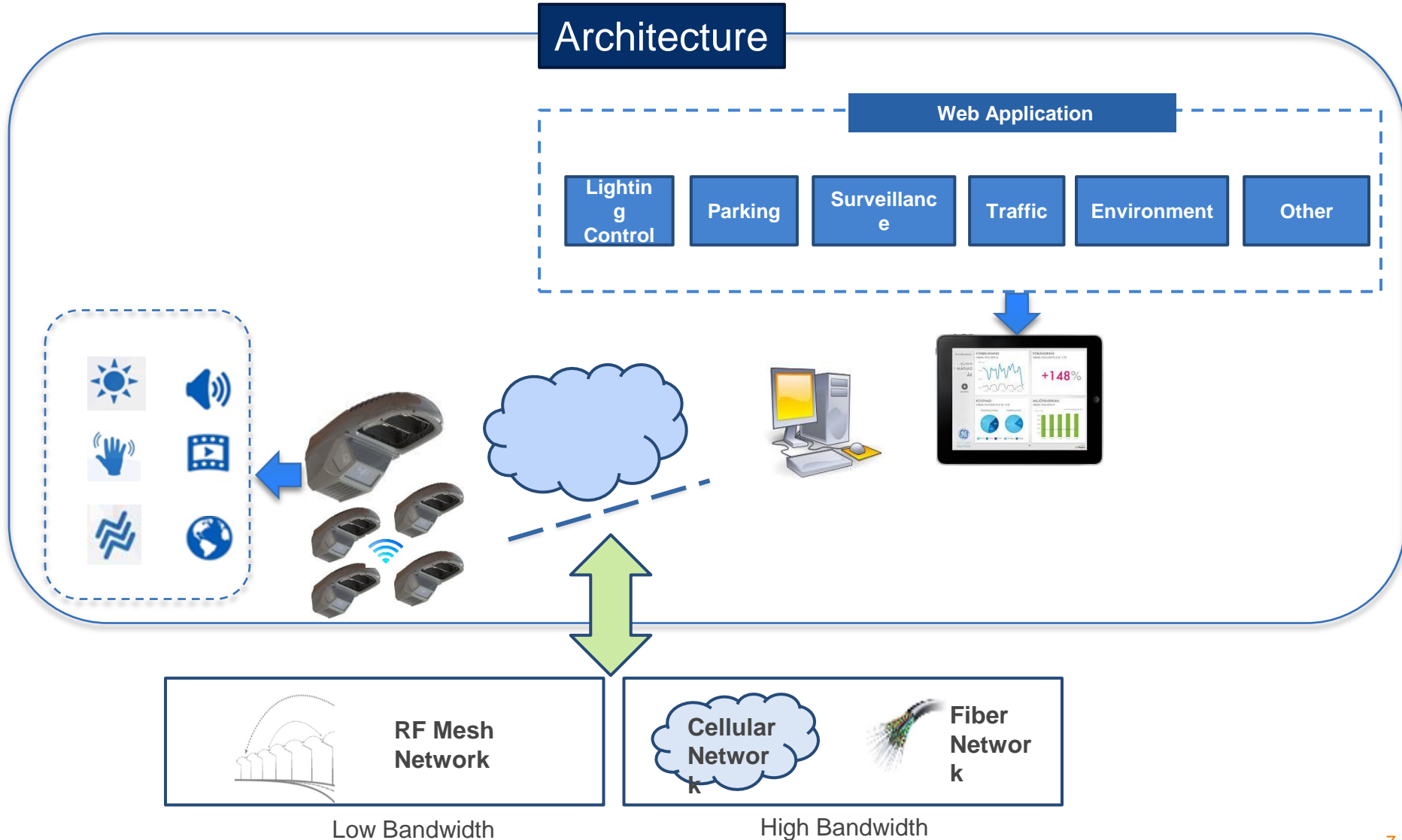
early deaths annually  
in the U.S.

## Maintenance & Operations

# Intelligent Environments



# Intelligent City Architecture



## Cloud

for efficiency and agility



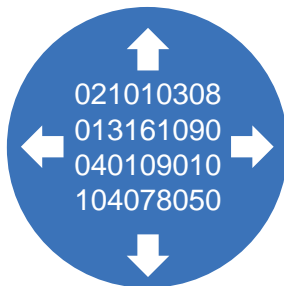
Going mobile:  
anytime/  
anywhere  
**Access**



End-to-end  
**Security**



Predictive  
insights from  
**Big Data**



## Industrial Internet platform requirements



Consistent and  
meaningful  
**User  
experience**

Cloud based Integrated  
**Asset Data  
Management**

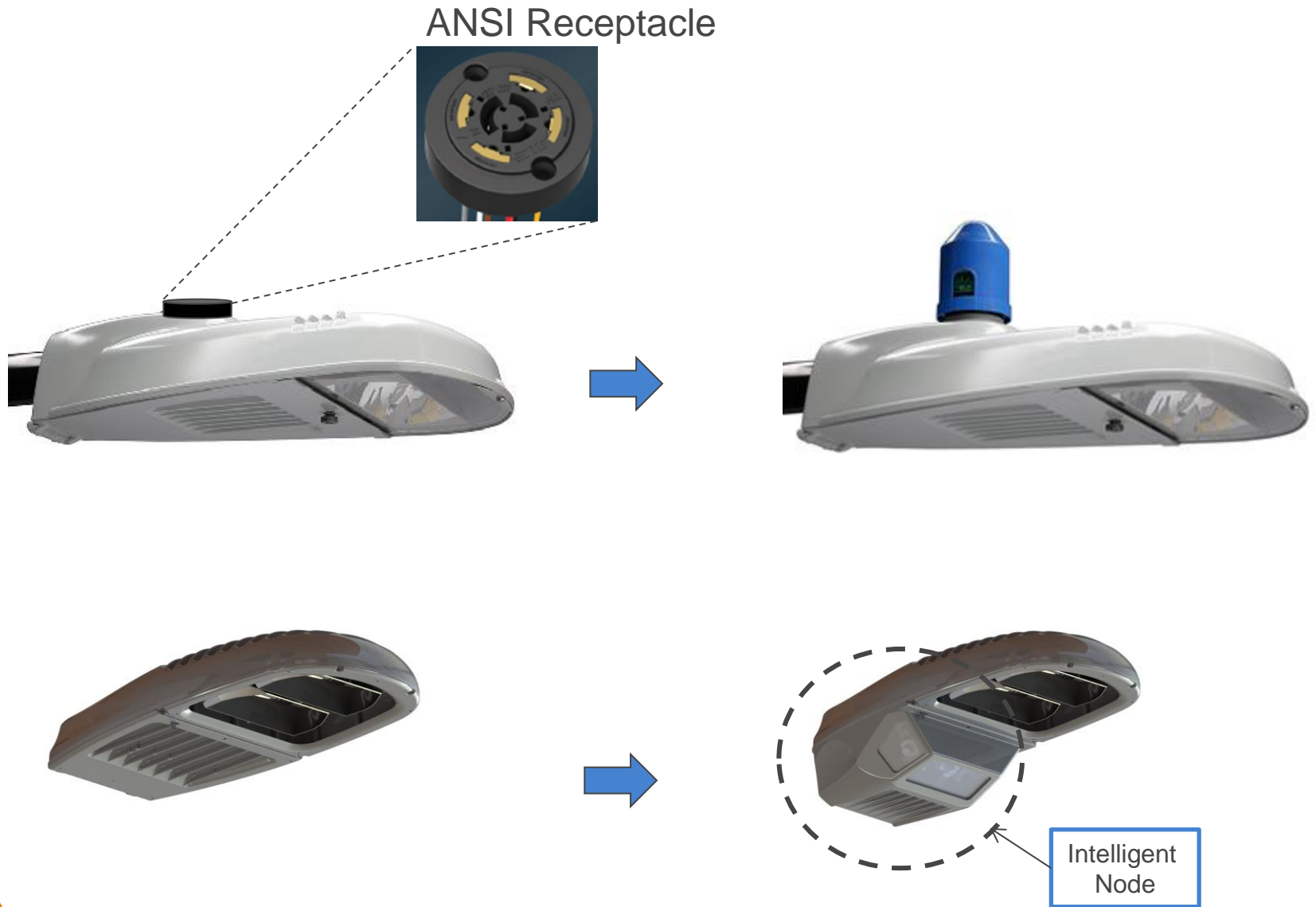


Crowd Source  
Applications Development  
**Open Data**



Together Toward Tomorrow | 2016

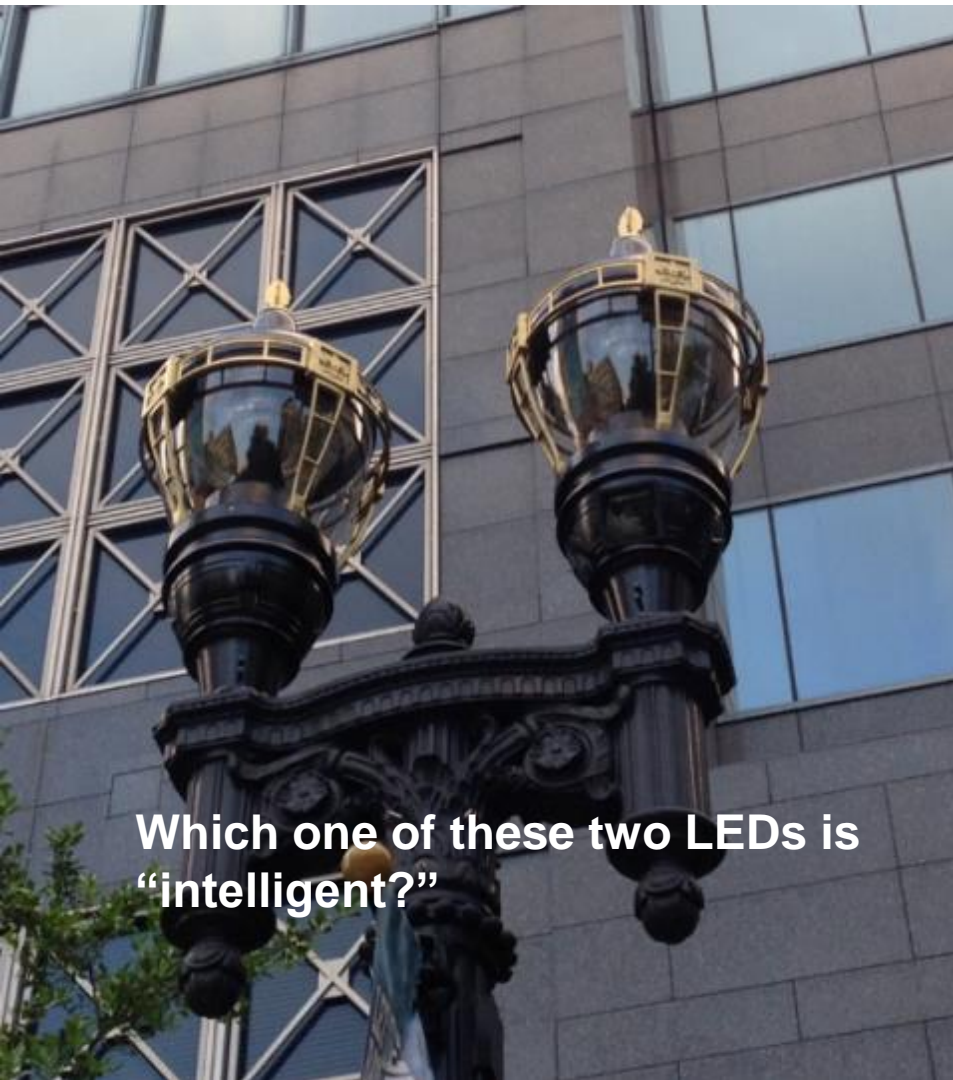
# LED -> LED + Controls -> Intelligent Fixtures



# Research Topics

- Video Analytics – Machine Learning...
- Cost Effective way to “Move Data”
- Dense Network Optimization
- Harmonization of Standards





Which one of these two LEDs is  
“intelligent?”



Together Toward Tomorrow | 2016