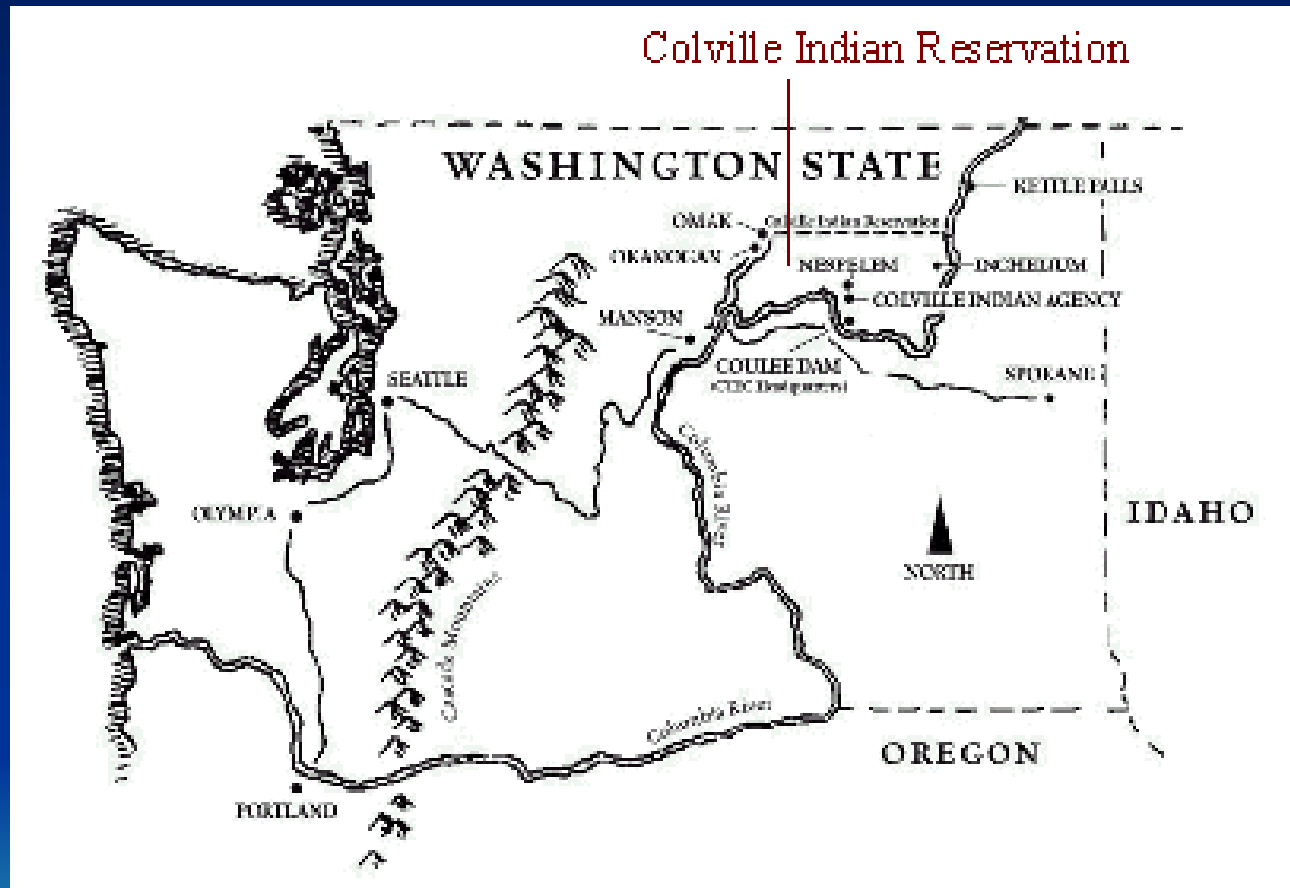


# Colville Confederated Tribes Traditional Homeland



# Location Map



# History

- Established in 1872 by Presidential Executive Order
- 1.4 million acres
- Approximately 8,900 tribal members



# What is the relationship between The Tribe, the CBC and CTEC?





# Colville Tribal Enterprise Corporation (CTEC)

Growing with the Colville Tribe

# History

- The Colville Business Council founded CTEC in 1984
- CTEC's purpose was to provide employment opportunities for Tribal members and increase revenue for the Tribe



# CTEC Leadership Goals

- Identify economic opportunities
- Diversify reservation economy
- Increase standard of living





# Mission Statement

*CTEC's mission is to provide revenue for the Tribes and meaningful employment opportunities for Tribal members.*





# In The Beginning

- Employed 100 people
- Annual revenue of \$5 million

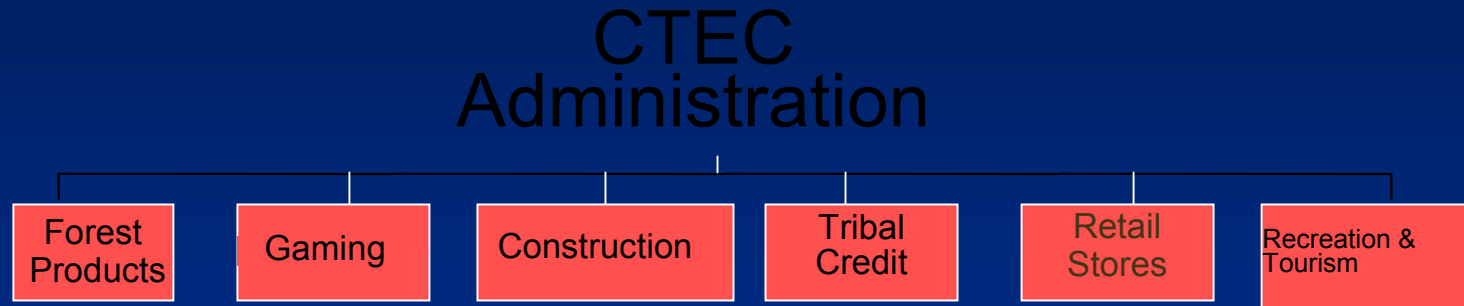


## CTEC Today

- **Employs over 1,000 people, both tribal and non-tribal**
- **Annual revenue in excess of \$100 million**



# How is CTEC organized?

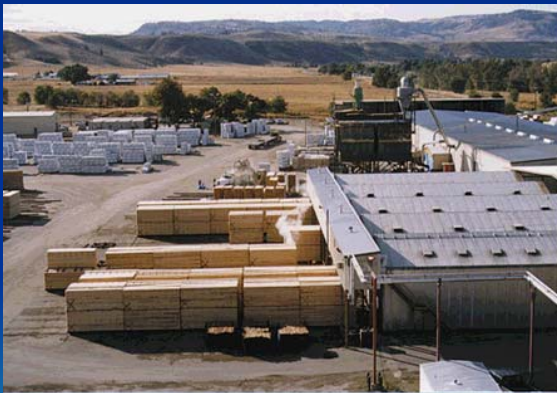


- Forest Products Division
- Gaming Division
- Construction
- Tribal Credit Division
- Retail Stores
- Recreation/Tourism & Business Development

# What are CTEC's Enterprises?

## Gaming Division

- Mill Bay Casino
- Coulee Dam Casino
- Okanogan Bingo-Casino



## Forest Products Division

- Colville Indian Precision Pine
- Colville Timber Resource
- Colville Tribal Logging
- Colville Indian Power & Veneer

# What are CTEC's Enterprises?

## Retail Stores

- Trading Post
- Keller Community Store
- Inchelium Community Store

## CTSC

- Construction

## Recreation/Tourism Division

- Roosevelt Recreation Enterprise (RRE)
- Rainbow Beach

## Tribal Credit Division

- Colville Tribal Credit





# Colville Indian Power & Veneer



# Green Veneer End





# Plywood made from green end





# Hog Fuel for Power Production



# Power Turbines





# Control Room of Powerhouse

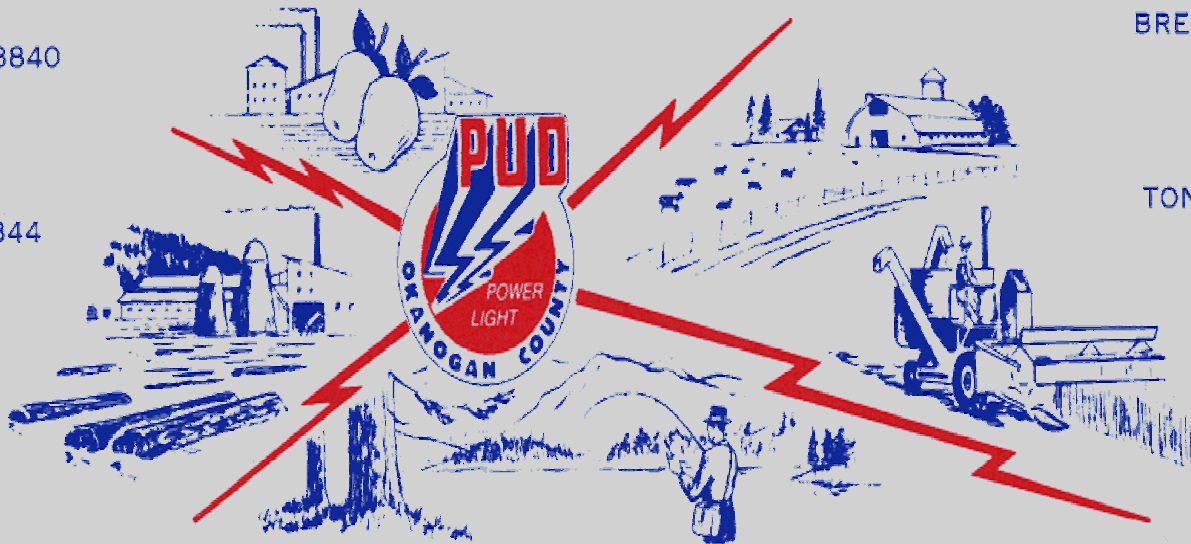


GENERAL OFFICE  
OKANOGAN, WA 98840  
P.O. BOX 912  
(509) 422-3310  
FAX 422-4020

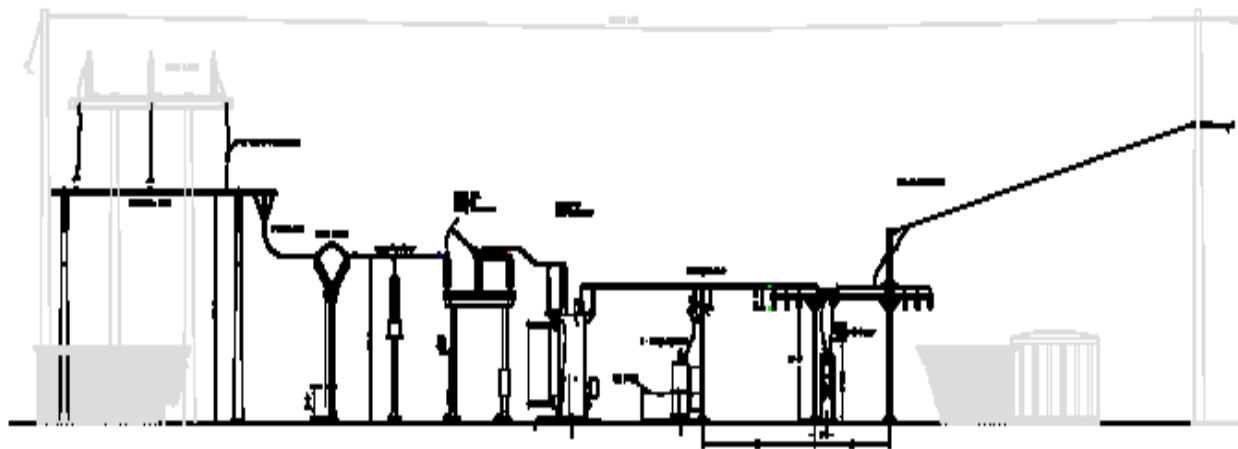
OROVILLE, WA 98844  
P.O. BOX 1969  
(509) 476-2928  
FAX 476-2445

BREWSTER, WA 98812  
P.O. BOX 187  
(509) 689-2502  
FAX 689-3090

TONASKET, WA 98855  
P.O. BOX 585  
(509) 486-2131  
FAX 486-1710



PUBLIC UTILITY DISTRICT NO. 1 OF OKANOGAN COUNTY



STRUCTURAL DATA	
NO.	1
DATE	10/10/2010
BY	10/10/2010
REVISION	10/10/2010
1	10/10/2010
2	10/10/2010
3	10/10/2010
4	10/10/2010
5	10/10/2010
6	10/10/2010
7	10/10/2010
8	10/10/2010
9	10/10/2010
10	10/10/2010

# Construction Begins



Early April 2003

# Installing the Transformers





# Taking Shape





# Linking to the Powerhouse





# Nearly Finished



September 2003







# Inside the Substation





# Remote Operations Control

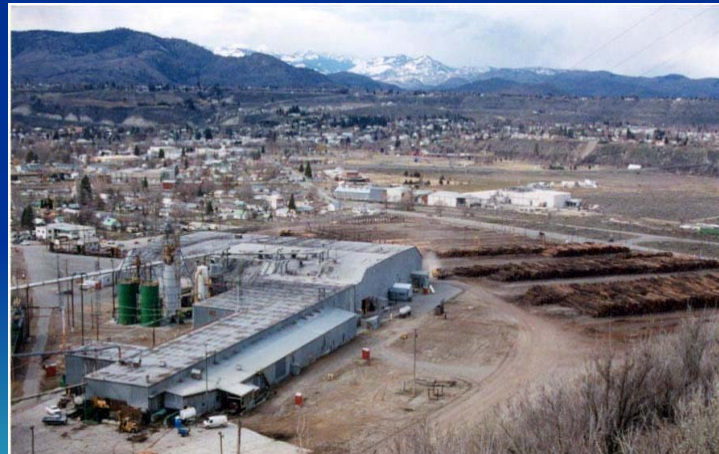
Portal Access

Password Protected

Connect by Fiber Optic, Radio, Telephone



# Producing Power for the Tribe...



# ...and the Community

## Islanded Operation

PUD can bypass Substation to Original Low-Voltage Distribution Line

CIPV Can Remain Running and Producing Power

CIPV Can Connect to Selected Critical Loads;  
i.e., hospitals



**Thank You**

