



U.S. DEPARTMENT OF
ENERGY

OFFICE OF
**ENVIRONMENTAL
MANAGEMENT**

WIPP Status Update

Frank Marcinowski

Deputy Assistant Secretary for Waste Management

U.S. Department of Energy • Office of Environmental Management

September 3, 2015

Recap of the Incidents at WIPP

February 5, 2014 Truck Fire:

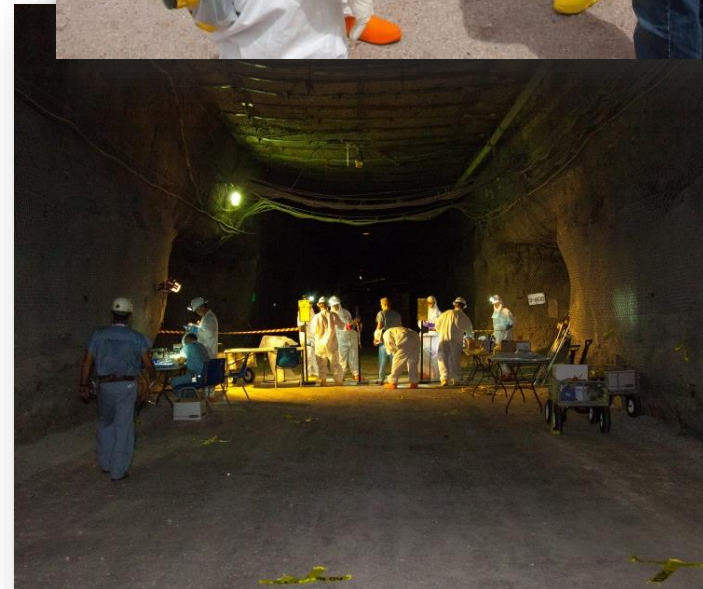
- All operations at the repository ceased following salt haul truck fire in the WIPP underground
- An investigation team deployed to determine the cause of the fire

February 14, 2014 Radiological Incident:

- A continuous air monitor detected airborne radiation in the underground
- WIPP's ventilation system automatically switched to high-efficiency particulate air (HEPA) filtration mode when airborne radiation was detected
- Underground and the WIPP mine remains in filtration mode at this time.
- Extensive sampling and monitoring conducted by DOE, New Mexico, and Carlsbad Environmental Monitoring Research Center Monitoring.
 - EPA and the NMED also performed sampling
- Efforts by the DOE and Nuclear Waste Partnership are ensuring workers are fully protected during recovery and restart

Key Recovery Steps

- Documented Safety Analysis Revisions
- Safety Management Program Revitalization
- Underground Restoration
 - Re-Establish Degraded Equipment
 - Fire Protection
 - Maintenance and Ground Control
 - Radiological Risk Mitigation
 - Soot cleaning of electrical panels
- Expedited mine stability
- Initial Panel 6 and Panel 7, Room 7 Closure
- Interim Ventilation
- Supplemental Ventilation Modifications

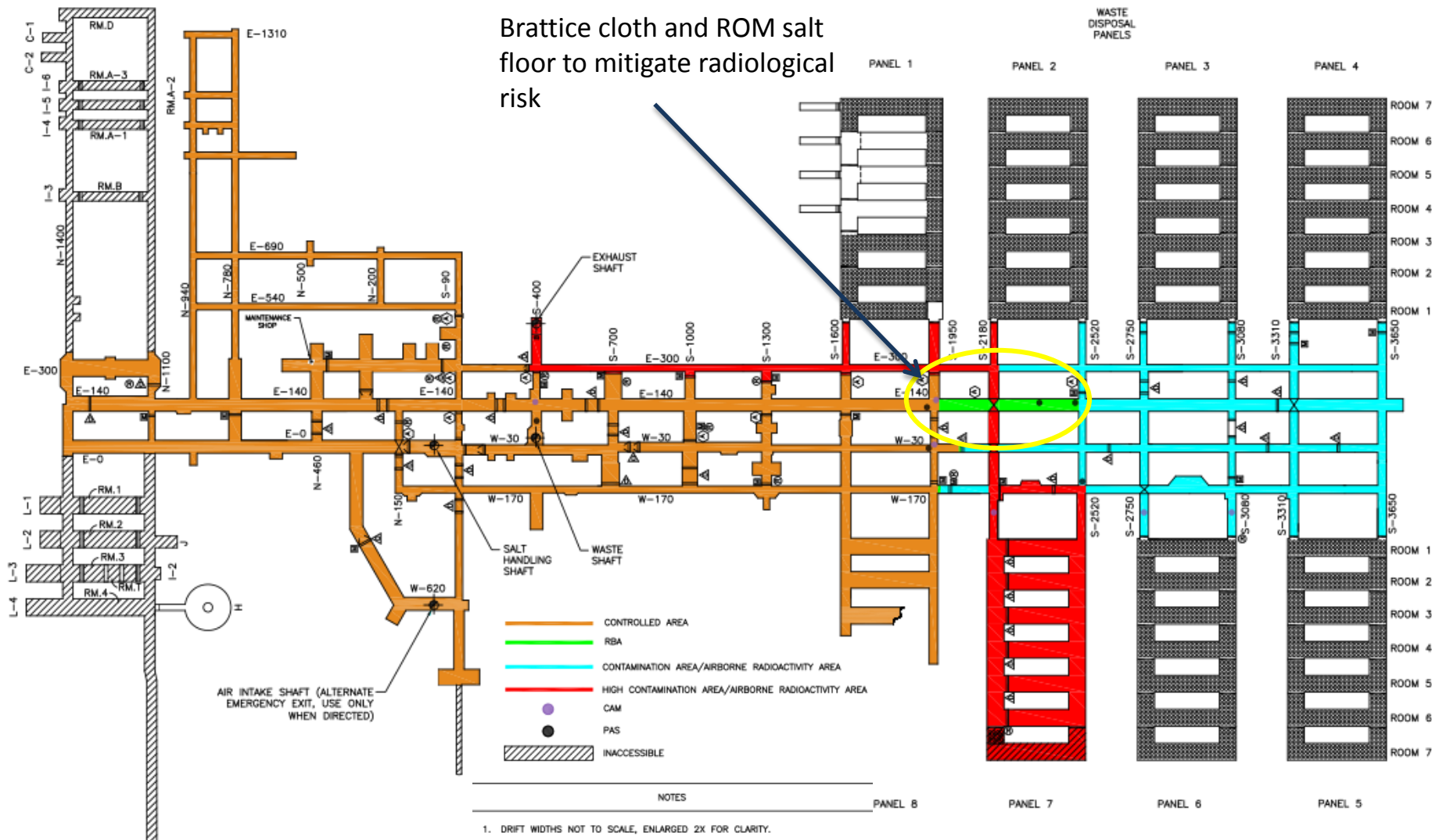


Radiological Risk Reduction

- Radiological risk reduction activities continue in the underground
 - Use of a water spray has proven to be effective for reducing surface contamination/re-suspension levels
 - Brattice cloth is being placed on contaminated sections of the floor and covered with run of mine salt



Radiological Posting



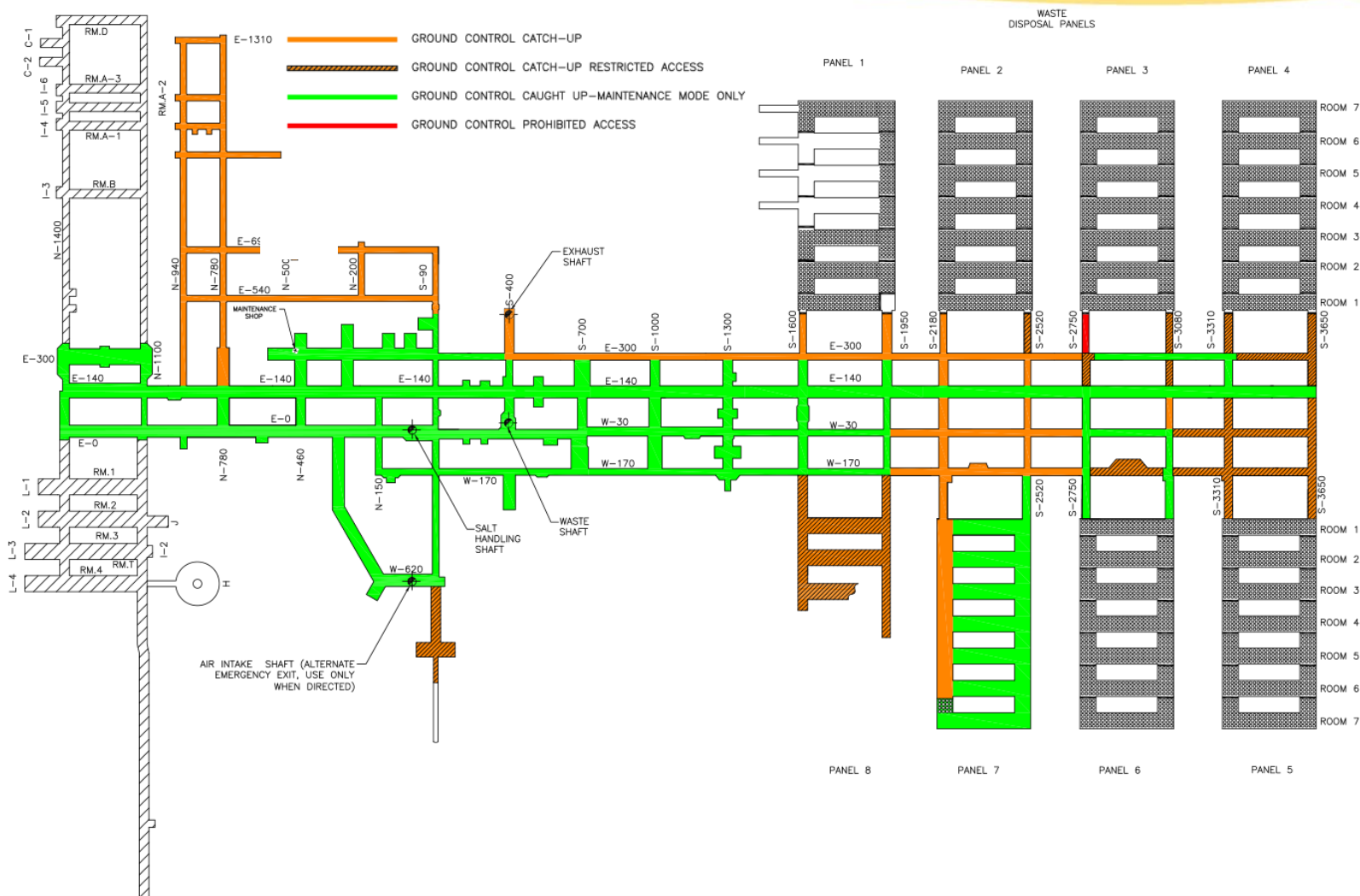
Ground Control



- Salt has moved since the incidents and some rock-bolts have failed, as expected
- Bolting activities completed in a number of operationally significant areas



Ground Control



Initial Panel Closures

- Initial panel closure activities completed:
 - Panel 6 (May 11)
 - Panel 7, Room 7 (May 29)
- All suspect nitrate salt containers of concern disposed in the WIPP underground are now isolated



Interim Ventilation System

- Fan/Filter Units
 - Repairs and QA testing completed
 - Units have been transported to the site
- Civil engineering work
 - Concrete placements completed
 - Final grading and cleanup completed



Supplemental Ventilation System



- Re-routing electrical power in underground
- Removal of 402 bulkhead in progress
- Downloading of SVS fan to underground scheduled later this month

Hybrid Bolter



- WIPP purchased a new hybrid (diesel/electric) bolter
- The unit has been moved underground and reassembled; auto fire suppression is being installed
- Electrical power is being moved to support bolter
- Bolter will allow acceleration of ground control work

AIB Reports and Corrective Action Plans

- CBFO/NWP Corrective Action Plans for judgments of need from Accident Investigation Board (AIB) reports on the haul truck fire and Phase I radiological event were approved in February of 2015 – now in implementation
- AIB Report for the Radiological Release Event, Phase II, issued April 2015. Phase II focused on determining the direct cause of the radiological release

TRU Waste Generator Impacts

Prioritization of Shipments:

- It is premature at this stage of the recovery to predict and allocate the rate of TRU waste shipments to WIPP.
- Initial focus will be on emplacement of wastes generated during recovery activities and emplacement of wastes currently stored in the WIPP surface facilities (these wastes were received but not emplaced prior to the events).
- The timing for resumption of shipments from offsite currently is uncertain and will be based on a variety of factors.

TRU Waste Generator Impacts

- In determining the rate of shipments among sites, DOE will consider numerous technical and programmatic factors
 - WIPP transportation and waste acceptance capabilities
 - Generator site compliance commitments
 - Storage capacities
 - Other site specific technical or safety issues
- Construction of additional surface storage at WIPP is one option being considered.



- Develop new PMB based on current schedule/cost impacts – fall 2015
- Complete interim and supplemental ventilation – early 2016
- Complete Operational Readiness Reviews
- Resume waste emplacement



Questions & Answers

