



... for a brighter future

Poster Location: P-19

Characterization of Particulate Emissions from GDI Engine Combustion with Alcohol-blended Fuels

Kyeong Lee, Heeje Seong,

William Church, Steve McConnell, and Andrew Ickes

Center for Transportation Research

Argonne National Laboratory

October 18, 2012



U.S. Department
of Energy

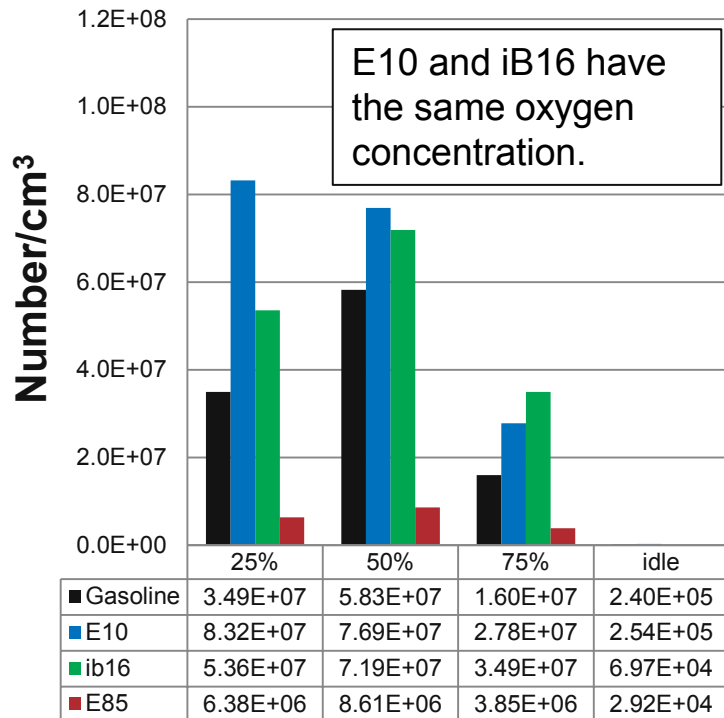
UChicago ►
Argonne_{LLC}

A U.S. Department of Energy laboratory
managed by UChicago Argonne, LLC

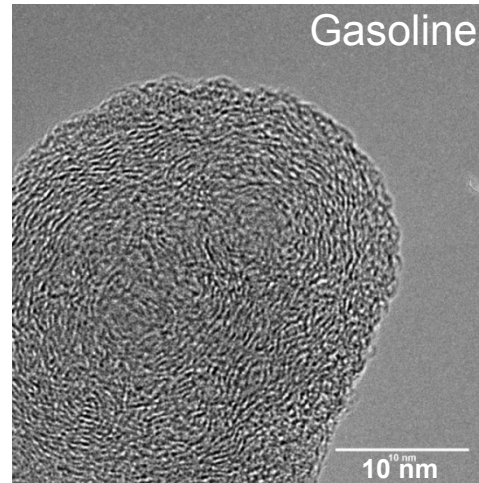
***The 18th Directions in Engine-Efficiency and Emissions
Research (DEER), Dearborn, Michigan***

GDI engine particulates from alcohol-blended fuels are significantly different in morphology and nanostructures

Total Particulate Concentration



HR-TEM images



Low-degree graphite

