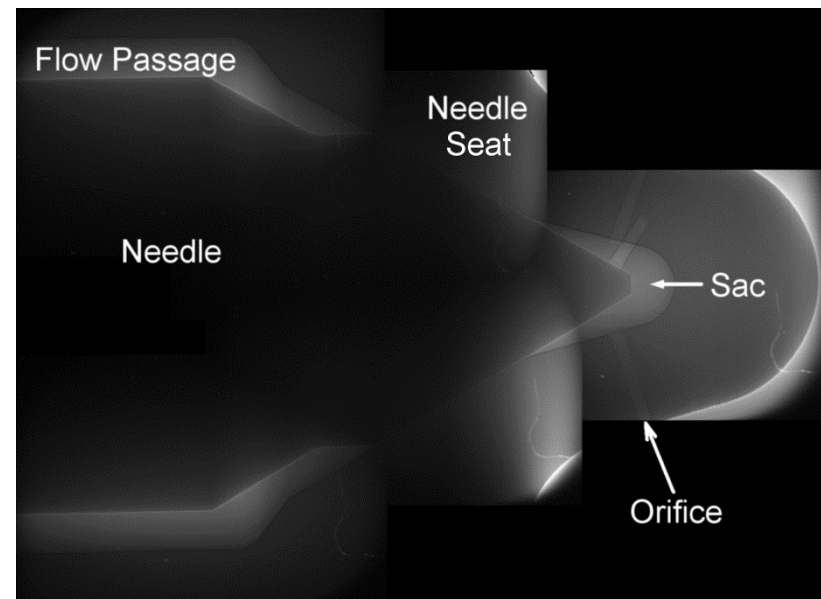
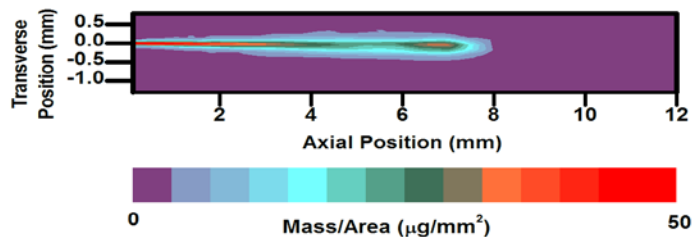


Advances in X-Ray Diagnostics of Diesel Fuel Sprays

Christopher F. Powell, Alan Kastengren
Argonne National Laboratory

POSTER P-14



Sponsor: Gurpreet Singh, DOE Vehicle Technologies Program

X-Ray Diagnostics Reveal Injector, Spray Behavior

- X-ray diagnostics show features invisible to other techniques
 - Spray density: dedicated facility
 - Injector mechanical motion: lift *and* wobble
 - Gas flow in injectors
- Further information at poster P-14

