

# What Challenges are Associated with Shale Gas Production?

Developing any energy resource – whether conventional or non-conventional like shale – carries with it the possibility and risk of **environmental, public health, and safety issues**. Some of the challenges related to shale gas production and hydraulic fracturing include:

- Increased consumption of fresh water (volume and sources);
- Induced seismicity (earthquakes) from shale flowback water disposal; Chemical disclosure of fracture fluid additives;
- Potential ground and surface water contamination;
- Air quality impacts;
- Local impacts, such as the volume of truck traffic, noise, dust and land disturbance.

For more specifics about these challenges, see *“Shale Gas Development Challenges – A Closer Look”* fact sheets.

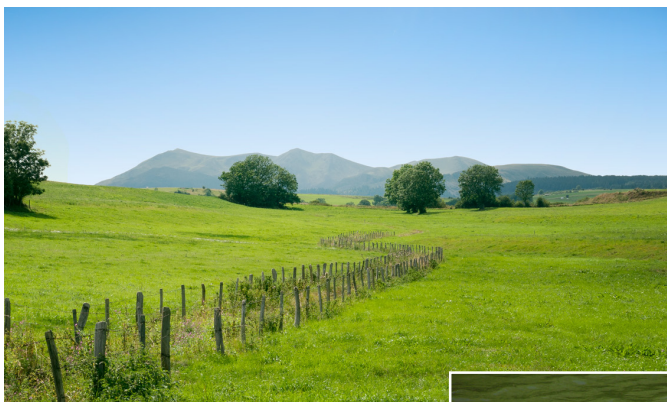


Photo: Doug Duncan, U.S. Geological Survey

