

Detailed Monthly and Annual LNG Import Statistics

2004 – 2012

**U.S. Department of Energy
Office of Fossil Energy
Office of Oil and Natural Gas**

LNG Imports (Number of Cargos)

(1 of 6)

Terminal	Year	Jan	Feb	Mar	Apr	May	Jun	Jul	Aug	Sep	Oct	Nov	Dec	Annual Totals
Everett MA*	2004	6	6	5	5	6	6	5	5	5	6	6	6	67
	2005	7	5	6	5	5	5	5	5	4	6	5	5	63
	2006	6	6	6	5	6	5	5	5	4	6	5	6	65
	2007	7	5	6	7	4	5	6	6	4	5	5	6	66
	2008	7	6	6	5	4	5	5	5	5	5	5	6	64
	2009	7	6	5	5	4	4	5	5	3	5	6	6	61
	2010	6	6	5	4.6	6	6	5	5.9	5	5	5	5	64.5
	2011	6	7	5	4	3	5	3	4	4	4	4	4	53
	2012	5	5.3	5	2	2	2	3	4	2	2	2		34.3
Cove Point MD	2004	6	7	6	6	6	6	7	7	7	5	6	8	77
	2005	7	7	7	6	8	7	7	3	6	6	7	7	78
	2006	4	4	3	5	4	5	4	4	2	1	1	3	40
	2007	5	2	8	7	8	–	8	8	2	2	1	–	51
	2008	2	1	2	–	1	–	–	2	–	–	–	1	9
	2009	1	2	1	5	4	4	3	–	1	1	1	2	25
	2010	5	3	3	2	–	–	–	–	–	2	–	–	15
	2011	1	2	–	–	–	–	–	1	–	1	–	–	5
	2012	–	–	–	–	1	–	–	–	–	–	–	–	1

•Cargo delivered to Everett, MA on April 4, 2010 is the remainder of the cargo that partially discharged at the Neptune DWP on March 10, 2010.
 Cargo delivered to Everett, MA on August 16, 2010 is a portion of the cargo which completed discharge at the Neptune DWP on August 22, 2010.
 Cargo delivered to Everett, MA on February 29, 2012 was only a partial cargo.

LNG Imports (Number of Cargos)

(2 of 6)

Terminal	Year	Jan	Feb	Mar	Apr	May	Jun	Jul	Aug	Sep	Oct	Nov	Dec	Annual Totals
Elba Island GA	2004	3	3	2	3	3	4	4	4	4	4	3	4	41
	2005	3	4	3	3	3	5	5	4	6	5	5	4	50
	2006	3	3	3	5	5	5	5	6	5	4	5	6	55
	2007	4	6	5	5	6	6	7	9	6	4	4	2	64
	2008	2	2	2	5	5	5	6	6	5	5	2	4	49
	2009	3	2	3	6	7	5	6	4	5	3	3	3	50
	2010	4	3	3	3	4	3	4	3	4	2	2	2	37
	2011	2	2	3	2	2	1	3	1	2	1	2	3	24
	2012	1	1	2	1	2	1	2	2	2	2	1	1	16
Lake Charles LA	2004	5	2	5	3	5	8	12	6	5	3	–	5	59
	2005	5	3	–	3	3	3	2	3	3	4	5	2	36
	2006	1	1	–	6	9	7	6	3	4	3	6	4	50
	2007	3	3	12	15	14	17	11	7	3	1	–	–	86
	2008	–	–	–	–	–	–	–	–	2	–	1	–	3
	2009	–	–	1	2	2	1	1	1	1	1	1	–	11
	2010	–	–	1	3	4	4	1	–	–	1	–	–	14
	2011	–	–	–	1	–	–	–	–	–	–	–	–	1
	2012	–	–	1	–	–	–	–	–	–	–	–	–	1

LNG Imports (Number of Cargos)

(3 of 6)

Terminal	Year	Jan	Feb	Mar	Apr	May	Jun	Jul	Aug	Sep	Oct	Nov	Dec	Annual Totals
Gulf* Gateway	2004	N/A	N/A	N/A	N/A	N/A	N/A	N/A	N/A	N/A	N/A	N/A	N/A	N/A
	2005	N/A	N/A	1	–	–	–	–	1	–	–	–	–	2
	2006	–	–	–	–	–	–	–	1	–	–	–	–	1
	2007	–	–	1	–	1	2	2	1	–	–	–	–	7
	2008	–	–	–	–	–	–	–	–	–	–	–	–	–
	2009	–	–	–	–	–	–	–	–	–	–	–	–	–
	2010	–	–	–	–	–	–	–	–	–	–	–	–	–
	2011	–	–	–	–	–	–	–	–	–	–	–	–	–
	2012	–	–	–	–	–	–	–	–	–	–	–	–	–
Sabine Pass LA	2004	N/A	N/A	N/A	N/A	N/A	N/A	N/A	N/A	N/A	N/A	N/A	N/A	N/A
	2005	N/A	N/A	N/A	N/A	N/A	N/A	N/A	N/A	N/A	N/A	N/A	N/A	N/A
	2006	N/A	N/A	N/A	N/A	N/A	N/A	N/A	N/A	N/A	N/A	N/A	N/A	N/A
	2007	N/A	N/A	N/A	N/A	N/A	N/A	N/A	N/A	N/A	N/A	N/A	N/A	N/A
	2008	N/A	N/A	N/A	1	–	2	–	–	–	–	–	–	3
	2009	–	–	1	1	–	2	–	1	2	–	1	1	9
	2010	1	2	1	2	–	–	1	–	–	1	2	2	12
	2011	2	–	2	1	–	–	–	2	1	3	–	1	12
	2012	–	1	–	–	–	–	1	–	–	–	1	–	3

*Excelerate Energy has announced that it will retire the Gulf Gateway terminal in the near future.

LNG Imports (Number of Cargos)

(4 of 6)

Terminal	Year	Jan	Feb	Mar	Apr	May	Jun	Jul	Aug	Sep	Oct	Nov	Dec	Annual Totals
Freeport TX	2004	N/A	N/A	N/A	N/A	N/A	N/A	N/A	N/A	N/A	N/A	N/A	N/A	N/A
	2005	N/A	N/A	N/A	N/A	N/A	N/A	N/A	N/A	N/A	N/A	N/A	N/A	N/A
	2006	N/A	N/A	N/A	N/A	N/A	N/A	N/A	N/A	N/A	N/A	N/A	N/A	N/A
	2007	N/A	N/A	N/A	N/A	N/A	N/A	N/A	N/A	N/A	N/A	N/A	N/A	N/A
	2008	N/A	N/A	N/A	1	1	-	-	-	-	-	-	-	2
	2009	-	-	-	-	-	1	-	1	-	-	-	-	2
	2010	-	-	-	-	-	-	1	-	2	1	-	-	4
	2011	1	1	-	1	-	-	1	1	-	1	-	1	7
	2012	-	-	-	-	-	-	-	1	-	-	-	-	1
Northeast Gateway*	2004	N/A	N/A	N/A	N/A	N/A	N/A	N/A	N/A	N/A	N/A	N/A	N/A	N/A
	2005	N/A	N/A	N/A	N/A	N/A	N/A	N/A	N/A	N/A	N/A	N/A	N/A	N/A
	2006	N/A	N/A	N/A	N/A	N/A	N/A	N/A	N/A	N/A	N/A	N/A	N/A	N/A
	2007	N/A	N/A	N/A	N/A	N/A	N/A	N/A	N/A	N/A	N/A	N/A	N/A	N/A
	2008	N/A	N/A	N/A	N/A	1	-	-	-	-	-	-	-	1
	2009	0.2	-	0.0	0.7	0.1	-	-	-	-	-	0.1	1.0	2.1
	2010	2.9	2.8	0.3	-	-	-	-	-	-	-	-	-	5.9
	2011	-	-	-	-	-	-	-	-	-	-	-	-	-
	2012	-	-	-	-	-	-	-	-	-	-	-	-	-

*Several of the cargos that arrived at Northeast Gateway were discharged over the course of several months. Due to technical problems a cargo that arrived in January 2009 was discharged over the period of January through May 2009. The volume discharged in March was very small and rounded to zero in the table. In November 2009 only a small amount was discharged, the rest of this cargo was discharged in January 2010.

LNG Imports (Number of Cargos)

(5 of 6)

Terminal	Year	Jan	Feb	Mar	Apr	May	Jun	Jul	Aug	Sep	Oct	Nov	Dec	Annual Totals
Cameron LA	2004	N/A	N/A	N/A	N/A	N/A	N/A	N/A	N/A	N/A	N/A	N/A	N/A	N/A
	2005	N/A	N/A	N/A	N/A	N/A	N/A	N/A	N/A	N/A	N/A	N/A	N/A	N/A
	2006	N/A	N/A	N/A	N/A	N/A	N/A	N/A	N/A	N/A	N/A	N/A	N/A	N/A
	2007	N/A	N/A	N/A	N/A	N/A	N/A	N/A	N/A	N/A	N/A	N/A	N/A	N/A
	2008	N/A	N/A	N/A	N/A	N/A	N/A	N/A	N/A	N/A	N/A	N/A	N/A	N/A
	2009	N/A	N/A	N/A	N/A	N/A	1	1	–	–	–	1	–	3
	2010	1	–	–	–	–	–	1	–	–	–	–	–	2
	2011	1	–	1	1	–	–	–	1	–	–	–	–	4
	2012	–	1	–	–	–	–	–	–	–	–	1	–	2
Neptune DWP*	2004	N/A	N/A	N/A	N/A	N/A	N/A	N/A	N/A	N/A	N/A	N/A	N/A	N/A
	2005	N/A	N/A	N/A	N/A	N/A	N/A	N/A	N/A	N/A	N/A	N/A	N/A	N/A
	2006	N/A	N/A	N/A	N/A	N/A	N/A	N/A	N/A	N/A	N/A	N/A	N/A	N/A
	2007	N/A	N/A	N/A	N/A	N/A	N/A	N/A	N/A	N/A	N/A	N/A	N/A	N/A
	2008	N/A	N/A	N/A	N/A	N/A	N/A	N/A	N/A	N/A	N/A	N/A	N/A	N/A
	2009	N/A	N/A	N/A	N/A	N/A	N/A	N/A	N/A	N/A	N/A	N/A	N/A	N/A
	2010	N/A	N/A	0.4	–	–	–	–	0.1	–	–	–	–	0.5
	2011	–	–	–	–	–	–	–	–	–	–	–	–	–
	2012	–	–	–	–	–	–	–	–	–	–	–	–	–

*Cargo delivered to Neptune DWP on March 10, 2010 was only partially discharged there, the remainder of the cargo was delivered to Everett, MA on April 4, 2010. Cargo delivered to Neptune DWP on August 22, 2010 was the remainder of a cargo delivered to Everett, MA on August 16, 2010.

LNG Imports (Number of Cargos)

(6 of 6)

Terminal	Year	Jan	Feb	Mar	Apr	May	Jun	Jul	Aug	Sep	Oct	Nov	Dec	Annual Totals
Golden Pass TX	2004	N/A	N/A	N/A	N/A	N/A	N/A	N/A	N/A	N/A	N/A	N/A	N/A	N/A
	2005	N/A	N/A	N/A	N/A	N/A	N/A	N/A	N/A	N/A	N/A	N/A	N/A	N/A
	2006	N/A	N/A	N/A	N/A	N/A	N/A	N/A	N/A	N/A	N/A	N/A	N/A	N/A
	2007	N/A	N/A	N/A	N/A	N/A	N/A	N/A	N/A	N/A	N/A	N/A	N/A	N/A
	2008	N/A	N/A	N/A	N/A	N/A	N/A	N/A	N/A	N/A	N/A	N/A	N/A	N/A
	2009	N/A	N/A	N/A	N/A	N/A	N/A	N/A	N/A	N/A	N/A	N/A	N/A	N/A
	2010	N/A	N/A	N/A	N/A	N/A	N/A	N/A	N/A	N/A	N/A	2	1	3
	2011	1	–	1	1	4	1	–	–	–	–	–	–	8
	2012	–	–	–	–	–	–	–	–	–	–	–	–	–
Gulf LNG, MS	2004	N/A	N/A	N/A	N/A	N/A	N/A	N/A	N/A	N/A	N/A	N/A	N/A	N/A
	2005	N/A	N/A	N/A	N/A	N/A	N/A	N/A	N/A	N/A	N/A	N/A	N/A	N/A
	2006	N/A	N/A	N/A	N/A	N/A	N/A	N/A	N/A	N/A	N/A	N/A	N/A	N/A
	2007	N/A	N/A	N/A	N/A	N/A	N/A	N/A	N/A	N/A	N/A	N/A	N/A	N/A
	2008	N/A	N/A	N/A	N/A	N/A	N/A	N/A	N/A	N/A	N/A	N/A	N/A	N/A
	2009	N/A	N/A	N/A	N/A	N/A	N/A	N/A	N/A	N/A	N/A	N/A	N/A	N/A
	2010	N/A	N/A	N/A	N/A	N/A	N/A	N/A	N/A	N/A	N/A	N/A	N/A	N/A
	2011	N/A	N/A	N/A	N/A	N/A	2	–	–	–	–	–	–	2
	2012	–	–	–	–	–	–	–	–	–	–	–	–	–

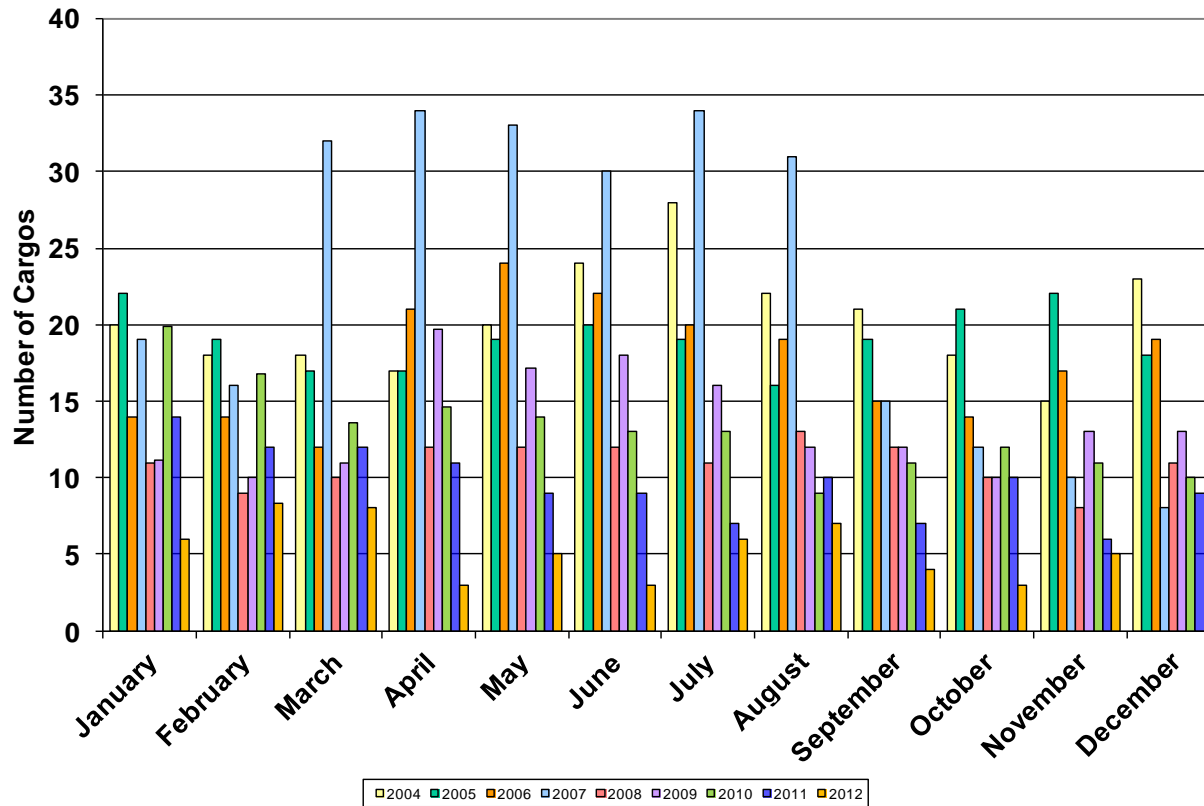
LNG Imports (Number of Cargos)

All CONUS Terminals

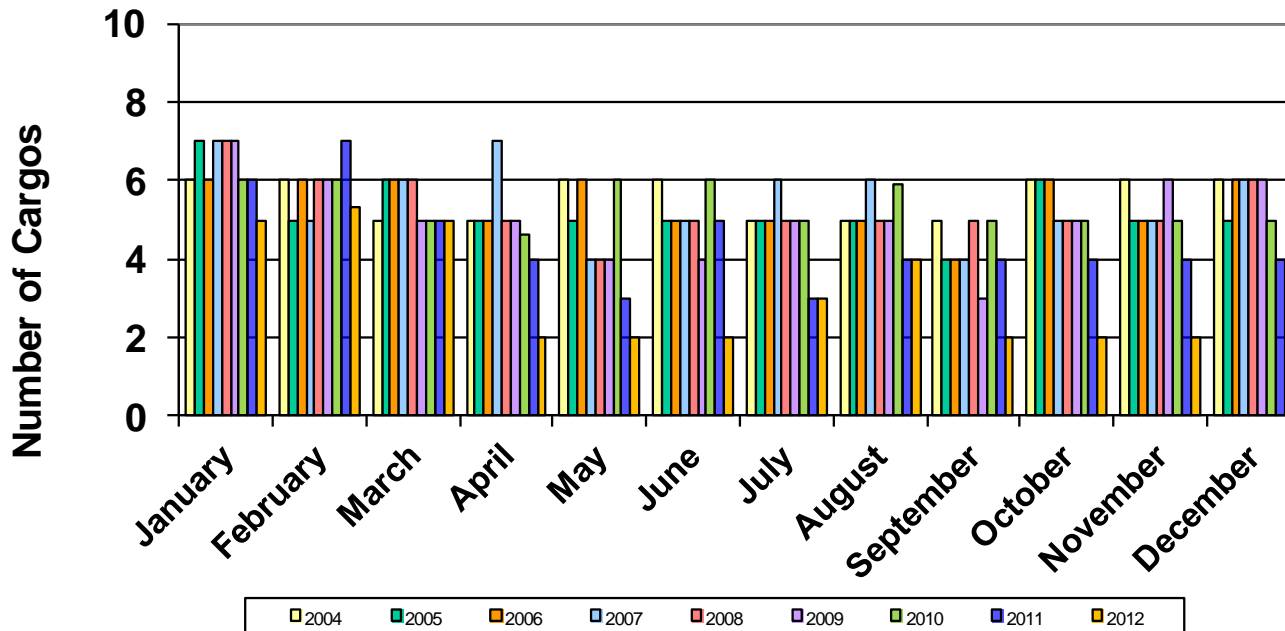
	Jan	Feb	Mar	Apr	May	Jun	Jul	Aug	Sep	Oct	Nov	Dec	Total
2004	20	18	18	17	20	24	28	22	21	18	15	23	244
2005	22	19	17	17	19	20	19	16	19	21	22	18	229
2006	14	14	12	21	24	22	20	19	15	14	17	19	211
2007	19	16	32	34	33	30	34	31	15	12	10	8	274
2008	11	9	10	12	12	12	11	13	12	10	8	11	131
2009*	11.2	10	11	19.7	17.1	18	16	12	12	10	13.1	13	163.1
2010*	19.9	16.8	13.6	14.6	14	13	13	9	11	12	11	10	157.9
2011	14	12	12	11	9	9	7	10	7	10	6	9	116
2012*	6	8.3	8	3	5	3	6	7	4	3	5		58.3

*Several of the cargoes that arrived in 2009 and 2010 were discharged over the course of several months. Cargo delivered to Everett, MA on February 29, 2012 was only a partial cargo.

Monthly LNG Imports - All CONUS Terminals 2004 - 2012

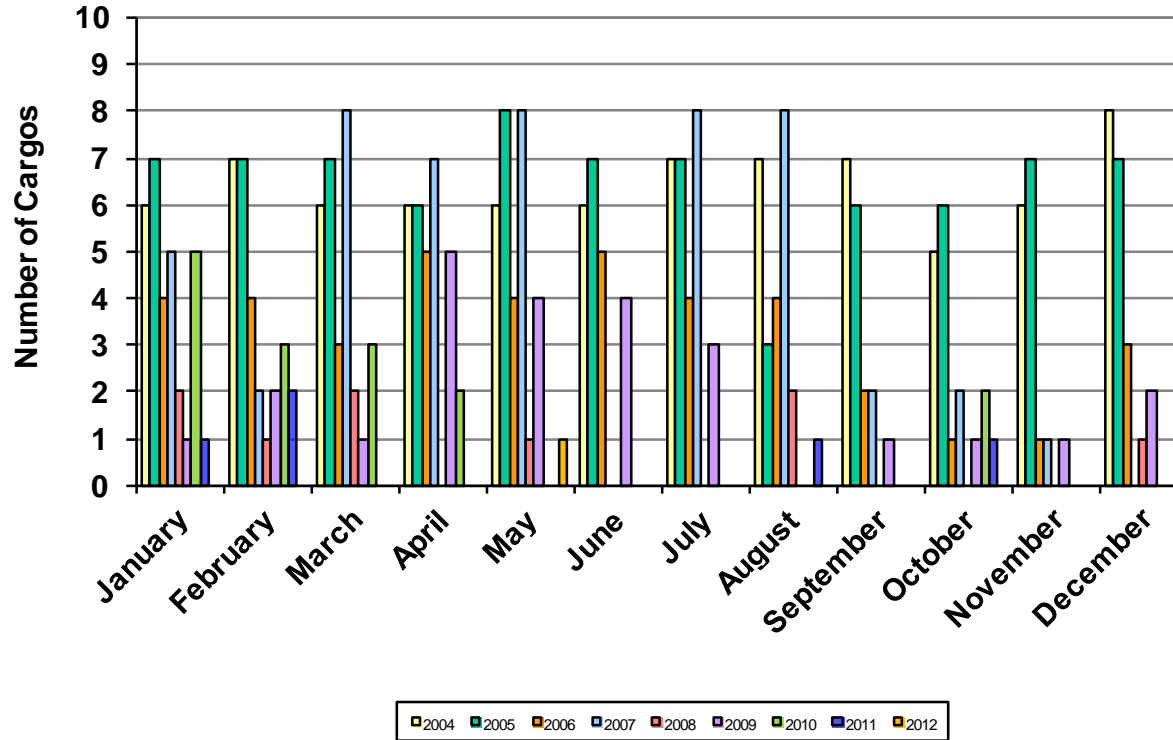


Monthly LNG Imports - Everett 2004-2012

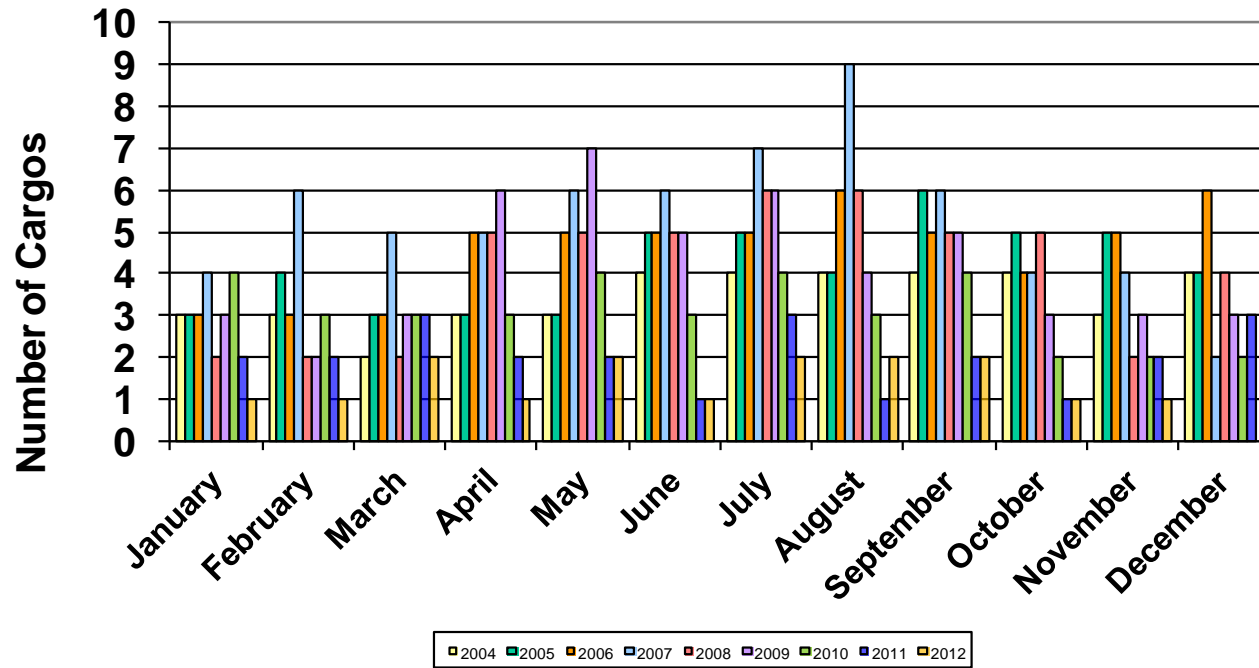


•Cargo delivered to Everett, MA on April 4, 2010 is the remainder of the cargo that partially discharged at the Neptune DWP on March 10, 2010.
 Cargo delivered to Everett, MA on August 16, 2010 is a portion of the cargo which completed discharge at the Neptune DWP on August 22, 2010.
 Cargo delivered to Everett, MA on February 29, 2012 was only a partial cargo.

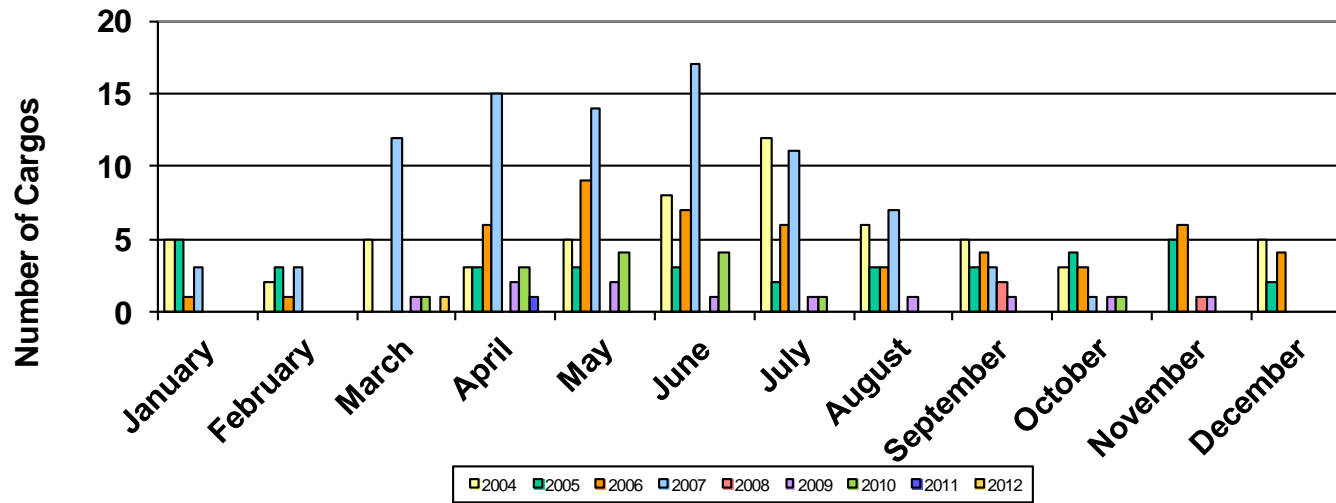
Monthly LNG Imports - Cove Point 2004-2012



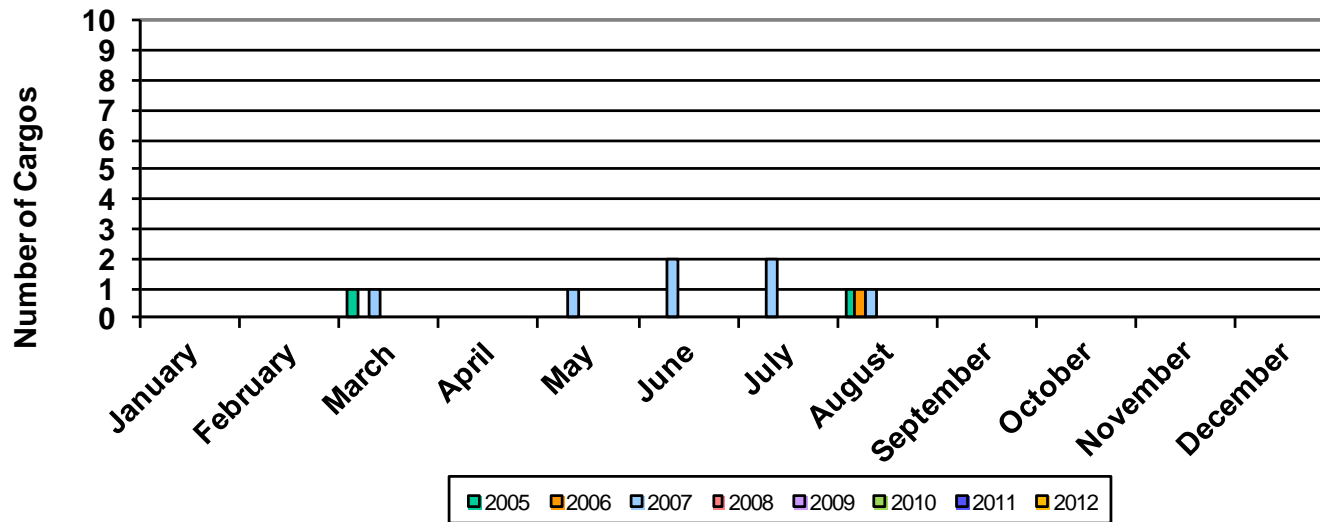
Monthly LNG Imports - Elba Island 2004-2012



Monthly LNG Imports - Lake Charles 2004-2012

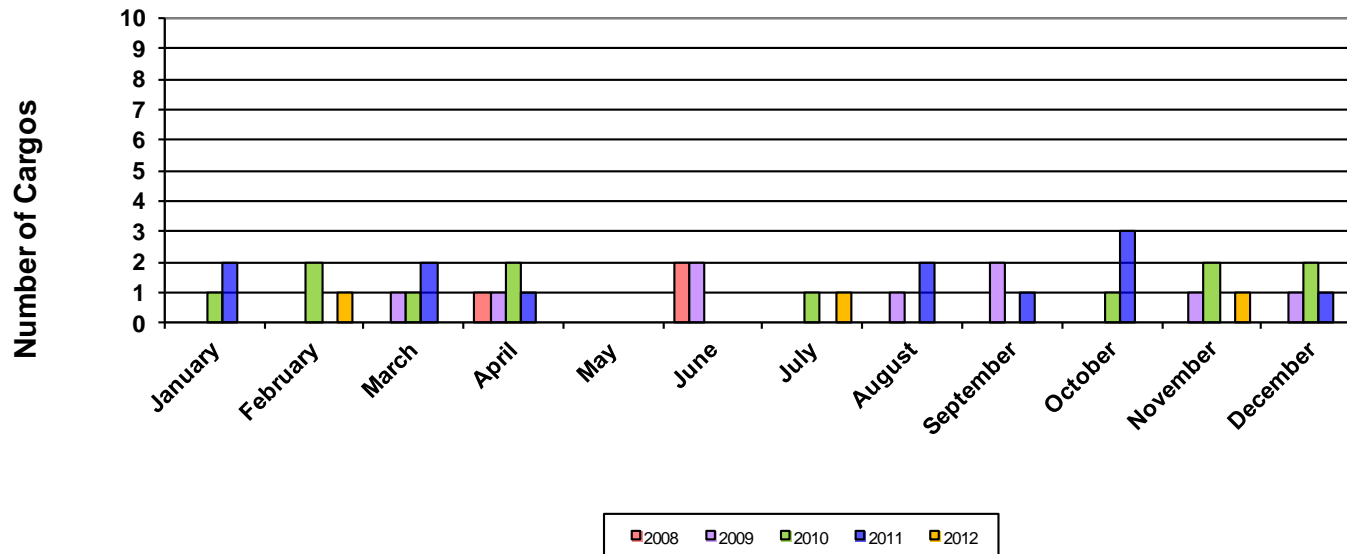


Monthly LNG Imports - Gulf Gateway* 2005-2012

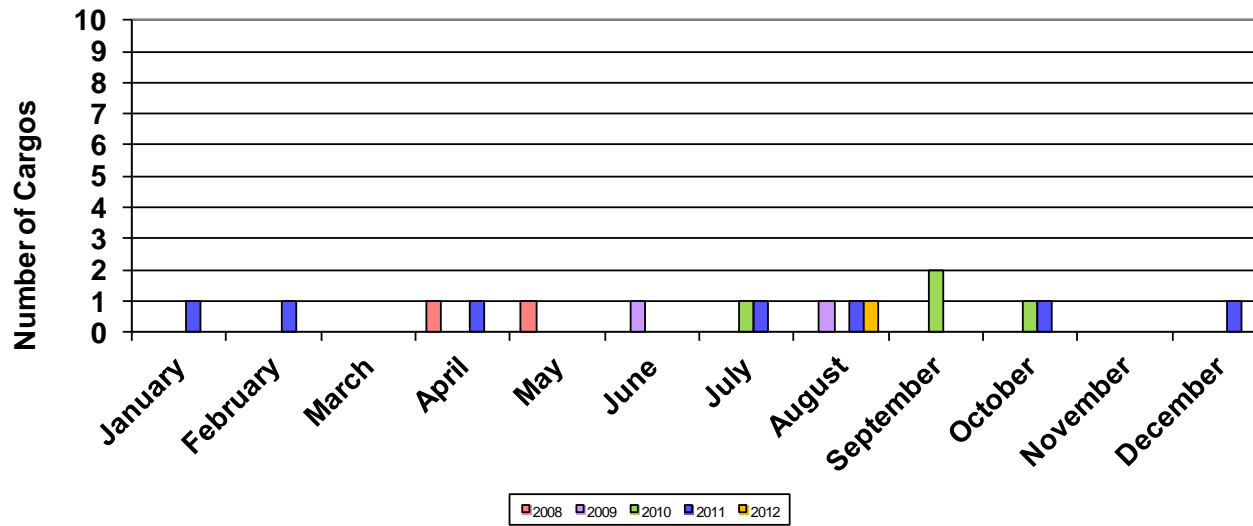


*Excelerate Energy has announced that it will retire the Gulf Gateway terminal in the near future.

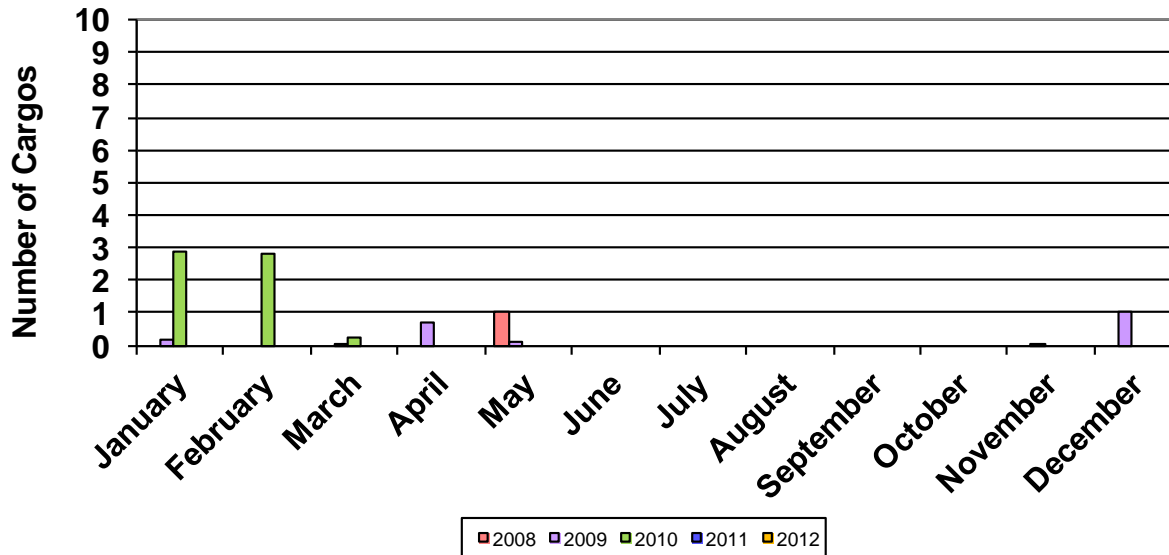
Monthly LNG Imports - Sabine Pass, LA 2008-2012



Monthly LNG Imports - Freeport, TX 2008-2012

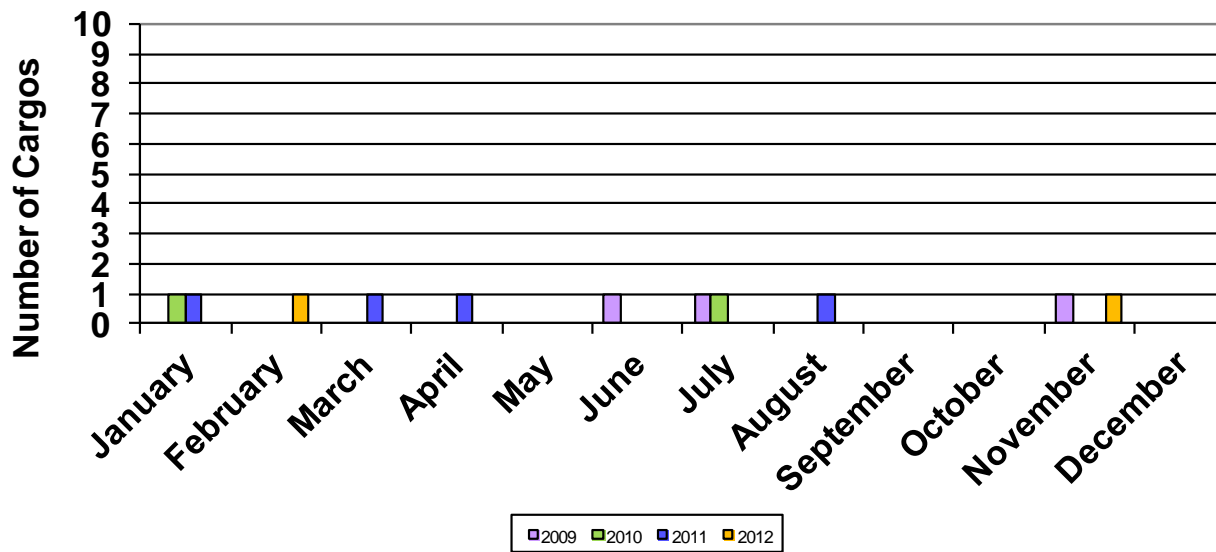


Monthly LNG Imports - Northeast Gateway 2008-2012

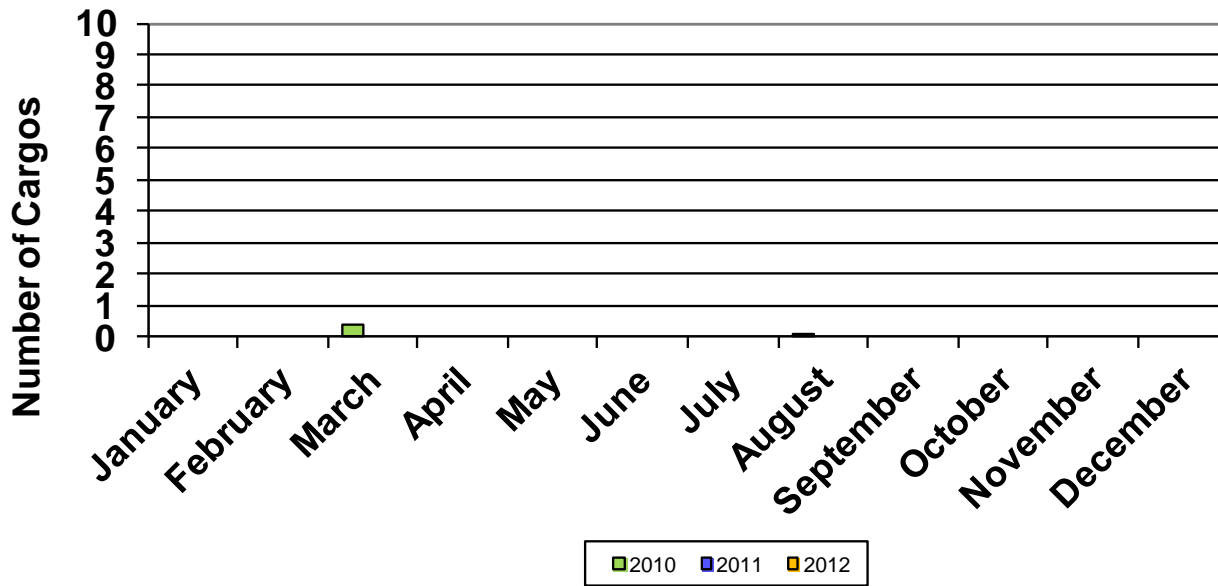


*Several of the cargos that arrived at Northeast Gateway were discharged over the course of several months. Due to technical problems a cargo that arrived in January 2009 was discharged over the period of January through May 2009. The volume discharged in March was too small to appear on the graph. In November 2009 only a small amount was discharged, the rest of this cargo was discharged in January 2010. The volume discharged in November is too small to appear on the graph. In addition to those outlined above, several other cargos in 2010 were discharged over several months.

Monthly LNG Imports - Cameron, LA 2009-2012

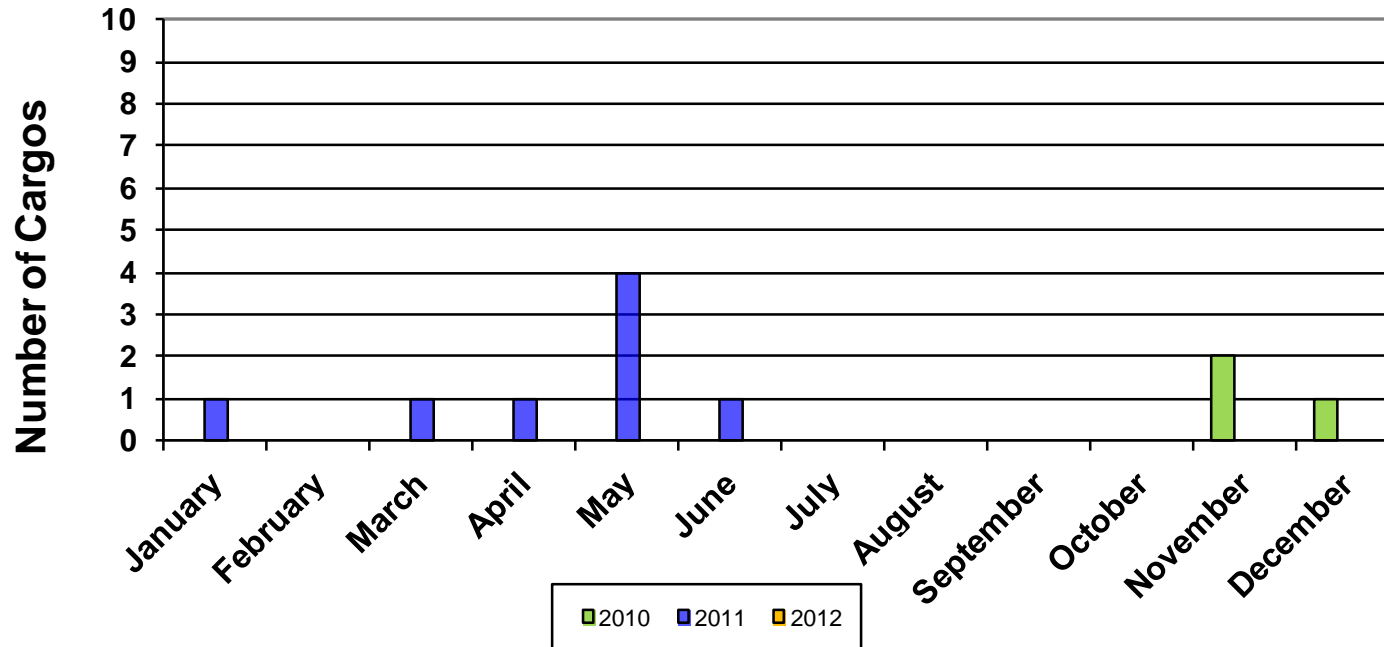


Monthly LNG Imports - Neptune Deepwater Port 2010-2012

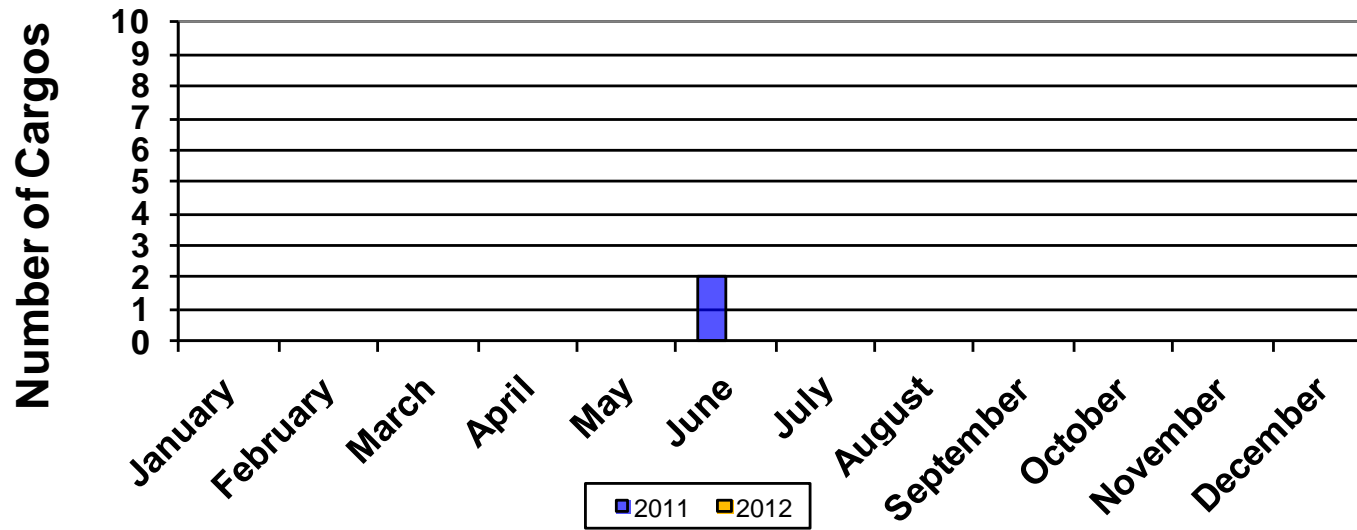


*Cargo delivered to Neptune DWP on March 10, 2010 was only partially discharged there, the remainder of the cargo was delivered to Everett, MA on April 4, 2010. Cargo delivered to Neptune DWP on August 22, 2010 is the remainder of a cargo delivered to Everett, MA on August 16, 2010.

Monthly LNG Imports - Golden Pass 2010-2012



Monthly LNG Imports - Gulf LNG 2011-2012



LNG Imports by Transaction Type

All CONUS Terminals (Number of Cargos)

(1 of 2)

Type	Year	Jan	Feb	Mar	Apr	May	Jun	Jul	Aug	Sep	Oct	Nov	Dec	Totals
Long-Term	2004	6	5.3	3.3	5	8.7	7.2	8.7	6.5	8.5	5	6.1	8.4	78.6
	2005	6.6	6.6	5.5	5.5	6.9	7.5	8.3	5.2	7	5.6	4	4	72.7
	2006	5.9	6.1	5.2	9.4	9	11	10	9.1	10	7.8	7.7	10.1	101.2
	2007	9.9	10	12.5	14.3	11	18.9	16.5	16.1	9.1	5	4	2	129.4
	2008	3.5	3.4	4.2	6.2	7.0	6.4	7.1	8	9.7	7.7	6	7	76.1
Short-Term	2004	14	12.7	14.7	12	11.3	16.8	19.3	15.5	12.5	13	8.9	14.6	165.4
	2005	15.4	12.4	11.5	11.5	12.1	12.5	10.7	10.8	12	15.4	18	14	156.3
	2006	7.1	5.9	6.8	9.6	14	10	8	9.9	4	6.2	9.3	6.9	97.8
	2007	6.1	6	15.5	16.7	19	9.1	12.5	10.9	5.9	7	6	6	120.6
	2008	7.5	5.6	5.8	4.8	3	5.6	3.9	5.0	2.3	2.3	2	4	51.9
Spot*	2004	N/A	N/A	N/A	N/A	N/A	N/A	N/A	N/A	N/A	N/A	N/A	N/A	N/A
	2005	N/A	N/A	N/A	N/A	N/A	N/A	N/A	N/A	N/A	N/A	N/A	N/A	N/A
	2006	1	2	–	2	1	1	2	–	1	–	–	2	12
	2007	3	–	4	3	3	2	5	4	–	–	–	–	24
	2008	–	–	–	1	2	–	–	–	–	–	–	–	3

*Spot cargoes are only identified for 2006 and later years. Prior to 2006, spot cargoes could be included in either long-term or short-term types.

LNG Imports by Transaction Type

All CONUS Terminals (Number of Cargos)

(2 of 2)

Type	Year	Jan	Feb	Mar	Apr	May	Jun	Jul	Aug	Sep	Oct	Nov	Dec	Totals
Long-Term	2009	8	5	5.2	11.6	11	10	10	6	8	6	8	7	95.8
	2010	7	6	7	8.6	11	11	11	6.	7	6	6	6	92.6
	2011	5	6	9	7	8	5	4	4	5	4	3	6	66
	2012	3	5	5	1	3	3	4	5	3	2	2		36
Short-Term	2009	3	5	5.8	5.5	6	5	5	3	2	3	5	4	52.2
	2010	7	5	4.4	5	2	2	–	3	2	4	3	3	40.4
	2011	4	5	2	2	–	2	1	1	1	3	2	1	24
	2012	2	2.3	2	2	1	–	1	1	1	1	2		15.3
Spot	2009	0.2	–	–	2.7	0.1	3	1	3	2	1	0.1	2	15.1
	2010	5.9	5.8	2.3	1	1	–	2	–	2	2	2	1	24.9
	2011	5	1	1	2	1	2	2	5	1	3	1	2	26
	2012	1	1	1	–	1	–	1	1	–	–	1		7

*Spot cargoes are only identified for 2006 and later years. Prior to 2006, spot cargoes could be included in either long-term or short-term types.

Short-term cargo delivered to Everett, MA on February 29 was only a partial cargo.

LNG Imports by Transaction Type

EVERETT, MA (Number of Cargos)

(1 of 2)

Type	Year	Jan	Feb	Mar	Apr	May	Jun	Jul	Aug	Sep	Oct	Nov	Dec	Totals
Long-Term	2004	3	2.3	1.3	2	4.7	3.2	3.7	2.5	4.5	1	3.1	2.4	33.6
	2005	2.6	2.6	2.5	2.5	3.9	2.5	3.3	3.2	2	2.6	2	1	30.7
	2006	1.9	3.1	2.2	3.4	2	4	3	3.1	4	1.8	1.7	3.1	33.2
	2007	2.9	2	1.5	4.3	1	3.9	2.5	4.1	2.1	2	1	2	29.4
	2008	3.5	1.4	3.2	2.2	3	1.4	2.1	3	2.7	2.7	3	3	31.1
Short-Term	2004	3	3.7	3.7	3	1.3	2.8	1.3	2.5	0.5	5	2.9	3.6	33.4
	2005	4.4	2.4	3.5	2.5	1.1	2.5	1.7	1.8	2	3.4	3	4	32.3
	2006	4.1	2.9	3.8	1.6	4	1	2	1.9	–	4.2	3.3	2.9	31.8
	2007	4.1	3	4.5	2.7	3	1.1	3.5	1.9	1.9	3	4	4	36.6
	2008	3.5	4.6	2.8	2.8	1	3.6	2.9	2	2.3	2.3	2	3	32.9
Spot*	2004	N/A	N/A	N/A	N/A	N/A	N/A	N/A	N/A	N/A	N/A	N/A	N/A	N/A
	2005	N/A	N/A	N/A	N/A	N/A	N/A	N/A	N/A	N/A	N/A	N/A	N/A	N/A
	2006	–	–	–	–	–	–	–	–	–	–	–	–	–
	2007	–	–	–	–	–	–	–	–	–	–	–	–	–
	2008	–	–	–	–	–	–	–	–	–	–	–	–	–

*Spot cargoes are only identified for 2006 and later years. Prior to 2006, spot cargoes could be included in either long-term or short-term types.

LNG Imports by Transaction Type

EVERETT, MA (Number of Cargos)

(2 of 2)

Type	Year	Jan	Feb	Mar	Apr	May	Jun	Jul	Aug	Sep	Oct	Nov	Dec	Totals
Long-Term	2009	5	3	1.2	3.6	2	4	3	1	2	2	4	3	33
	2010	2	2	3	2.6	4	4	5	2.9	3	3	3	4	38
	2011	3	4	4	3	3	3	2	3	3	3	2	3	36
	2012	3	3	3	1	2	2	3	4	2	2	2		27
Short-Term	2009	2	3	3.8	1.5	2	–	2	1	–	2	2	2	21
	2010	2	2	2	2	2	2	–	3	2	2	2	1	22
	2011	3	3	1	1	–	2	1	1	1	1	2.	1	17
	2012	2	2.3	2	1	–	–	–	–	–	–	–	–	7.3
Spot	2009	–	–	–	–	–	–	–	3	1	1	–	1	6
	2010	2	2	–	–	–	–	–	–	–	–	–	–	4
	2011	–	–	–	–	–	–	–	–	–	–	–	–	–
	2012	–	–	–	–	–	–	–	–	–	–	–	–	–

*Spot cargos are only identified for 2006 and later years. Prior to 2006, spot cargos could be included in either long-term or short-term types.

Short-term cargo delivered to Everett, MA on February 29, 2012 was only a partial cargo.

LNG Imports by Transaction Type

COVE POINT, MD (Number of Cargos)

(1 of 2)

Type	Year	Jan	Feb	Mar	Apr	May	Jun	Jul	Aug	Sep	Oct	Nov	Dec	Totals
Long-Term	2004	-	-	-	-	-	-	-	-	-	-	-	-	-
	2005	-	-	-	-	-	-	-	-	-	-	-	-	-
	2006	-	-	-	-	-	-	-	-	-	-	-	-	-
	2007	-	-	-	-	-	-	-	-	-	-	-	-	-
	2008	-	-	-	-	-	-	-	-	-	-	-	-	-
Short-Term	2004	6	7	6	6	6	6	7	7	7	5	6	8	77
	2005	7	7	7	6	8	7	7	3	6	6	7	7	78
	2006	3	3	3	3	3	4	2	4	1	1	1	1	29
	2007	2	2	5	4	6	-	5	5	2	2	1	-	34
	2008	2	1	2	-	1	-	-	2	-	-	-	1	9
Spot*	2004	N/A	N/A	N/A	N/A	N/A	N/A	N/A	N/A	N/A	N/A	N/A	N/A	N/A
	2005	N/A	N/A	N/A	N/A	N/A	N/A	N/A	N/A	N/A	N/A	N/A	N/A	N/A
	2006	1	1	-	2	1	1	2	-	1	-	-	2	11
	2007	3	-	3	3	2	-	3	3	-	-	-	-	17
	2008	-	-	-	-	-	-	-	-	-	-	-	-	-

*Spot cargos are only identified for 2006 and later years. Prior to 2006, spot cargos could be included in either long-term or short-term types.

LNG Imports by Transaction Type

COVE POINT, MD (Number of Cargos)

(2 of 2)

Type	Year	Jan	Feb	Mar	Apr	May	Jun	Jul	Aug	Sep	Oct	Nov	Dec	Totals
Long-Term	2009	-	-	-	-	-	-	-	-	-	-	-	-	-
	2010	-	-	-	-	-	-	-	-	-	-	-	-	-
	2011	-	-	-	-	-	-	-	-	-	-	-	-	-
	2012	-	-	-	-	-	-	-	-	-	-	-	-	-
Short-Term	2009	1	2	1	4	4	3	2	-	1	1	1	2	22
	2010	4	3	2	2	-	-	-	-	-	2	-	-	13
	2011	1	2	-	-	-	-	-	-	-	1	-	-	4
	2012	-	-	-	-	-	-	-	-	-	-	-	-	-
Spot	2009	-	-	-	1	-	1	1	-	-	-	-	-	3
	2010	1	-	1	-	-	-	-	-	-	-	-	-	2
	2011	-	-	-	-	-	-	-	1	-	-	-	-	1
	2012	-	-	-	-	1	-	-	-	-	-	-	-	1

*Spot cargos are only identified for 2006 and later years. Prior to 2006, spot cargos could be included in either long-term or short-term types.

LNG Imports by Transaction Type

ELBA ISLAND, GA (Number of Cargos)

(1 of 2)

Type	Year	Jan	Feb	Mar	Apr	May	Jun	Jul	Aug	Sep	Oct	Nov	Dec	Totals
Long-Term	2004	3	3	2	3	3	4	4	4	4	4	3	4	41
	2005	3	4	3	3	3	5	5	2	5	3	2	3	41
	2006	3	2	3	3	4	3	4	3	3	3	4	5	40
	2007	4	5	5	5	5	6	7	6	4	3	3	–	53
	2008	–	2	1	4	4	5	5	5	5	5	2	4	42
Short-Term	2004	–	–	–	–	–	–	–	–	–	–	–	–	–
	2005	–	–	–	–	–	–	–	2	1	2	3	1	9
	2006	–	–	–	2	1	2	1	3	2	1	1	1	14
	2007	–	1	–	–	1	–	–	3	2	1	1	2	1
	2008	2	–	1	1	1	–	1	1	–	–	–	–	7
Spot*	2004	N/A	N/A	N/A	N/A	N/A	N/A	N/A	N/A	N/A	N/A	N/A	N/A	N/A
	2005	N/A	N/A	N/A	N/A	N/A	N/A	N/A	N/A	N/A	N/A	N/A	N/A	N/A
	2006	–	1	–	–	–	–	–	–	–	–	–	–	1
	2007	–	–	–	–	–	–	–	–	–	–	–	–	–
	2008	–	–	–	–	–	–	–	–	–	–	–	–	–

*Spot cargoes are only identified for 2006 and later years. Prior to 2006, spot cargoes could be included in either long-term or short-term types.

LNG Imports by Transaction Type

ELBA ISLAND, GA (Number of Cargos)

(2 of 2)

Type	Year	Jan	Feb	Mar	Apr	May	Jun	Jul	Aug	Sep	Oct	Nov	Dec	Totals
Long-Term	2009	3	2	3	6	7	5	6	4	5	3	3	3	50
	2010	4	3	3	3	4	3	4	3	4	2	2	2	37
	2011	2	2	3	2	1	1	2	–	1	–	1	2	17
	2012	–	1	1	–	1	1	1	1	1	–	–	–	7
Short-Term	2009	–	–	–	–	–	–	–	–	–	–	–	–	–
	2010	–	–	–	–	–	–	–	–	–	–	–	–	–
	2011	–	–	–	–	–	–	–	–	–	–	–	–	–
	2012	–	–	–	1	1	–	1	1	1	1	1	–	7
Spot	2009	–	–	–	–	–	–	–	–	–	–	–	–	–
	2010	–	–	–	–	–	–	–	–	–	–	–	–	–
	2011	–	–	–	–	1	–	1	1	1	1	1	1	7
	2012	1	–	1	–	–	–	–	–	–	–	–	–	2

*Spot cargoes are only identified for 2006 and later years. Prior to 2006, spot cargoes could be included in either long-term or short-term types.

LNG Imports by Transaction Type

LAKE CHARLES, LA (Number of Cargos)

(1 of 2)

Type	Year	Jan	Feb	Mar	Apr	May	Jun	Jul	Aug	Sep	Oct	Nov	Dec	Totals
Long-Term	2004	–	–	–	–	1	–	1	–	–	–	–	2	4
	2005	1	–	–	–	–	–	–	–	–	–	–	–	1
	2006	1	1	–	3	3	4	3	3	3	3	2	2	28
	2007	3	3	6	5	5	9	7	6	3	–	–	–	47
	2008	–	–	–	–	–	–	–	–	2	–	1	–	3
Short-Term	2004	5	2	5	3	4	8	11	6	5	3	–	3	55
	2005	4	3	–	3	3	3	2	3	3	4	5	2	35
	2006	–	–	–	3	6	3	3	–	1	–	4	2	22
	2007	–	–	6	10	9	8	4	1	–	1	–	–	39
	2008	–	–	–	–	–	–	–	–	–	–	–	–	–
Spot*	2004	N/A	N/A	N/A	N/A	N/A	N/A	N/A	N/A	N/A	N/A	N/A	N/A	N/A
	2005	N/A	N/A	N/A	N/A	N/A	N/A	N/A	N/A	N/A	N/A	N/A	N/A	N/A
	2006	–	–	–	–	–	–	–	–	–	–	–	–	–
	2007	–	–	–	–	–	–	–	–	–	–	–	–	–
	2008	–	–	–	–	–	–	–	–	–	–	–	–	–

*Spot cargoes are only identified for 2006 and later years. Prior to 2006, spot cargoes could be included in either long-term or short-term types.

LNG Imports by Transaction Type

LAKE CHARLES, LA (Number of Cargos)

(2 of 2)

Type	Year	Jan	Feb	Mar	Apr	May	Jun	Jul	Aug	Sep	Oct	Nov	Dec	Totals
Long-Term	2009	-	-	1	2	2	1	1	1	1	1	1	-	11
	2010	-	-	1	2	3	4	1	-	-	1	-	-	12
	2011	-	-	-	1	-	-	-	-	-	-	-	-	1
	2012	-	-	1	-	-	-	-	-	-	-	-	-	1
Short-Term	2009	-	-	-	-	-	-	-	-	-	-	-	-	-
	2010	-	-	-	-	-	-	-	-	-	-	-	-	-
	2011	-	-	-	-	-	-	-	-	-	-	-	-	-
	2012	-	-	-	-	-	-	-	-	-	-	-	-	-
Spot	2009	-	-	-	-	-	-	-	-	-	-	-	-	-
	2010	-	-	-	1	1	-	-	-	-	-	-	-	2
	2011	-	-	-	-	-	-	-	-	-	-	-	-	-
	2012	-	-	-	-	-	-	-	-	-	-	-	-	-

*Spot cargos are only identified for 2006 and later years. Prior to 2006, spot cargos could be included in either long-term or short-term types.

LNG Imports by Transaction Type

GULF GATEWAY (Number of Cargos)

(1 of 2)

Type	Year	Jan	Feb	Mar	Apr	May	Jun	Jul	Aug	Sep	Oct	Nov	Dec	Totals
Long-Term	2004	N/A	N/A	N/A	N/A	N/A	N/A	N/A	N/A	N/A	N/A	N/A	N/A	N/A
	2005	N/A	N/A	-	-	-	-	-	-	-	-	-	-	-
	2006	-	-	-	-	-	-	-	-	-	-	-	-	-
	2007	-	-	-	-	-	-	-	-	-	-	-	-	-
	2008	-	-	-	-	-	-	-	-	-	-	-	-	-
Short-Term	2004	N/A	N/A	N/A	N/A	N/A	N/A	N/A	N/A	N/A	N/A	N/A	N/A	N/A
	2005	N/A	N/A	1	-	-	-	-	1	-	-	-	-	2
	2006	-	-	-	-	-	-	-	1	-	-	-	-	1
	2007	-	-	-	-	-	-	-	-	-	-	-	-	-
	2008	-	-	-	-	-	-	-	-	-	-	-	-	-
Spot*	2004	N/A	N/A	N/A	N/A	N/A	N/A	N/A	N/A	N/A	N/A	N/A	N/A	N/A
	2005	N/A	N/A	N/A	N/A	N/A	N/A	N/A	N/A	N/A	N/A	N/A	N/A	N/A
	2006	-	-	-	-	-	-	-	-	-	-	-	-	-
	2007	-	-	1	-	1	2	2	1	-	-	-	-	7
	2008	-	-	-	-	-	-	-	-	-	-	-	-	-

Gulf Gateway received its first cargo in March 2005. Excelerate Energy has announced that it will retire the Gulf Gateway terminal in the near future.

*Spot cargoes are only identified for 2006 and later years. Prior to 2006, spot cargoes could be included in either long-term or short-term types.

LNG Imports by Transaction Type

GULF GATEWAY (Number of Cargos)

(2 of 2)

Type	Year	Jan	Feb	Mar	Apr	May	Jun	Jul	Aug	Sep	Oct	Nov	Dec	Totals
Long-Term	2009	-	-	-	-	-	-	-	-	-	-	-	-	-
	2010	-	-	-	-	-	-	-	-	-	-	-	-	-
	2011	-	-	-	-	-	-	-	-	-	-	-	-	-
	2012	-	-	-	-	-	-	-	-	-	-	-	-	-
Short-Term	2009	-	-	-	-	-	-	-	-	-	-	-	-	-
	2010	-	-	-	-	-	-	-	-	-	-	-	-	-
	2011	-	-	-	-	-	-	-	-	-	-	-	-	-
	2012	-	-	-	-	-	-	-	-	-	-	-	-	-
Spot	2009	-	-	-	-	-	-	-	-	-	-	-	-	-
	2010	-	-	-	-	-	-	-	-	-	-	-	-	-
	2011	-	-	-	-	-	-	-	-	-	-	-	-	-
	2012	-	-	-	-	-	-	-	-	-	-	-	-	-

*Spot cargoes are only identified for 2006 and later years. Prior to 2006, spot cargoes could be included in either long-term or short-term types.

Gulf Gateway received its first cargo in March 2005. Excelerate Energy has announced that it will retire the Gulf Gateway terminal in the near future.

LNG Imports by Transaction Type

SABINE PASS, LA (Number of Cargos)

(1 of 2)

Type	Year	Jan	Feb	Mar	Apr	May	Jun	Jul	Aug	Sep	Oct	Nov	Dec	Totals
Long-Term	2004	N/A	N/A	N/A	N/A	N/A	N/A	N/A	N/A	N/A	N/A	N/A	N/A	N/A
	2005	N/A	N/A	N/A	N/A	N/A	N/A	N/A	N/A	N/A	N/A	N/A	N/A	N/A
	2006	N/A	N/A	N/A	N/A	N/A	N/A	N/A	N/A	N/A	N/A	N/A	N/A	N/A
	2007	N/A	N/A	N/A	N/A	N/A	N/A	N/A	N/A	N/A	N/A	N/A	N/A	N/A
	2008	N/A	N/A	N/A	–	–	–	–	–	–	–	–	–	–
Short-Term	2004	N/A	N/A	N/A	N/A	N/A	N/A	N/A	N/A	N/A	N/A	N/A	N/A	N/A
	2005	N/A	N/A	N/A	N/A	N/A	N/A	N/A	N/A	N/A	N/A	N/A	N/A	N/A
	2006	N/A	N/A	N/A	N/A	N/A	N/A	N/A	N/A	N/A	N/A	N/A	N/A	N/A
	2007	N/A	N/A	N/A	N/A	N/A	N/A	N/A	N/A	N/A	N/A	N/A	N/A	N/A
	2008	N/A	N/A	N/A	1	–	2	–	–	–	–	–	–	3
Spot*	2004	N/A	N/A	N/A	N/A	N/A	N/A	N/A	N/A	N/A	N/A	N/A	N/A	N/A
	2005	N/A	N/A	N/A	N/A	N/A	N/A	N/A	N/A	N/A	N/A	N/A	N/A	N/A
	2006	N/A	N/A	N/A	N/A	N/A	N/A	N/A	N/A	N/A	N/A	N/A	N/A	N/A
	2007	N/A	N/A	N/A	N/A	N/A	N/A	N/A	N/A	N/A	N/A	N/A	N/A	N/A
	2008	N/A	N/A	N/A	–	–	–	–	–	–	–	–	–	–

Sabine Pass received its first cargo in April 2008.

*Spot cargos are only identified for 2006 and later years. Prior to 2006, spot cargos could be included in either long-term or short-term types.

LNG Imports by Transaction Type

SABINE PASS, LA (Number of Cargos)

(2 of 2)

Type	Year	Jan	Feb	Mar	Apr	May	Jun	Jul	Aug	Sep	Oct	Nov	Dec	Totals
Long-Term	2009	-	-	-	-	-	-	-	-	-	-	-	1	1
	2010	1	1	-	1	-	-	1	-	-	-	1	-	5
	2011	-	-	2	1	-	-	-	1	1	1	-	1	7
	2012	-	1	-	-	-	-	-	-	-	-	-	-	1
Short-Term	2009	-	-	1	-	-	1	-	1	1	-	1	-	5
	2010	-	-	-	1	-	-	-	-	-	-	1	2	4
	2011	-	-	-	-	-	-	-	-	-	1	-	-	1
	2012	-	-	-	-	-	-	-	-	-	-	-	-	-
Spot	2009	-	-	-	1	-	1	-	-	1	-	-	-	3
	2010	-	1	1	-	-	-	-	-	-	1	-	-	3
	2011	2	-	-	-	-	-	-	1	-	1	-	-	4
	2012	-	-	-	-	-	-	1	-	-	-	1	-	2

*Spot cargos are only identified for 2006 and later years. Prior to 2006, spot cargos could be included in either long-term or short-term types.

Sabine Pass received its first cargo in April 2008.

LNG Imports by Transaction Type

FREEPORT, TX (Number of Cargos)

(1 of 2)

Type	Year	Jan	Feb	Mar	Apr	May	Jun	Jul	Aug	Sep	Oct	Nov	Dec	Totals
Long-Term	2004	N/A	N/A	N/A	N/A	N/A	N/A	N/A	N/A	N/A	N/A	N/A	N/A	N/A
	2005	N/A	N/A	N/A	N/A	N/A	N/A	N/A	N/A	N/A	N/A	N/A	N/A	N/A
	2006	N/A	N/A	N/A	N/A	N/A	N/A	N/A	N/A	N/A	N/A	N/A	N/A	N/A
	2007	N/A	N/A	N/A	N/A	N/A	N/A	N/A	N/A	N/A	N/A	N/A	N/A	N/A
	2008	N/A	N/A	N/A	-	-	-	-	-	-	-	-	-	-
Short-Term	2004	N/A	N/A	N/A	N/A	N/A	N/A	N/A	N/A	N/A	N/A	N/A	N/A	N/A
	2005	N/A	N/A	N/A	N/A	N/A	N/A	N/A	N/A	N/A	N/A	N/A	N/A	N/A
	2006	N/A	N/A	N/A	N/A	N/A	N/A	N/A	N/A	N/A	N/A	N/A	N/A	N/A
	2007	N/A	N/A	N/A	N/A	N/A	N/A	N/A	N/A	N/A	N/A	N/A	N/A	N/A
	2008	N/A	N/A	N/A	-	-	-	-	-	-	-	-	-	-
Spot*	2004	N/A	N/A	N/A	N/A	N/A	N/A	N/A	N/A	N/A	N/A	N/A	N/A	N/A
	2005	N/A	N/A	N/A	N/A	N/A	N/A	N/A	N/A	N/A	N/A	N/A	N/A	N/A
	2006	N/A	N/A	N/A	N/A	N/A	N/A	N/A	N/A	N/A	N/A	N/A	N/A	N/A
	2007	N/A	N/A	N/A	N/A	N/A	N/A	N/A	N/A	N/A	N/A	N/A	N/A	N/A
	2008	N/A	N/A	N/A	1	1	-	-	-	-	-	-	-	2

Freeport received its first cargo in April 2008.

*Spot cargoes are only identified for 2006 and later years. Prior to 2006, spot cargoes could be included in either long-term or short-term types.

LNG Imports by Transaction Type

FREEPORT, TX (Number of Cargos)

(2 of 2)

Type	Year	Jan	Feb	Mar	Apr	May	Jun	Jul	Aug	Sep	Oct	Nov	Dec	Totals
Long-Term	2009	-	-	-	-	-	-	-	-	-	-	-	-	-
	2010	-	-	-	-	-	-	-	-	-	-	-	-	-
	2011	-	-	-	-	-	-	-	-	-	-	-	-	-
	2012	-	-	-	-	-	-	-	-	-	-	-	-	-
Short-Term	2009	-	-	-	-	-	-	-	1	-	-	-	-	1
	2010	-	-	-	-	-	-	-	-	-	-	-	-	-
	2011	-	-	-	-	-	-	-	-	-	-	-	-	-
	2012	-	-	-	-	-	-	-	-	-	-	-	-	-
Spot	2009	-	-	-	-	-	1	-	-	-	-	-	-	1
	2010	-	-	-	-	-	-	1	-	2	1	-	-	4
	2011	1	1	-	-	-	-	1	1	-	1	-	1	7
	2012	-	-	-	-	-	-	-	1	-	-	-	-	1

*Spot cargos are only identified for 2006 and later years. Prior to 2006, spot cargos could be included in either long-term or short-term types.

Freeport received its first cargo in April 2008.

LNG Imports by Transaction Type

NORTHEAST GATEWAY (Number of Cargos)

(1 of 2)

Type	Year	Jan	Feb	Mar	Apr	May	Jun	Jul	Aug	Sep	Oct	Nov	Dec	Totals
Long-Term	2004	N/A	N/A	N/A	N/A	N/A	N/A	N/A	N/A	N/A	N/A	N/A	N/A	N/A
	2005	N/A	N/A	N/A	N/A	N/A	N/A	N/A	N/A	N/A	N/A	N/A	N/A	N/A
	2006	N/A	N/A	N/A	N/A	N/A	N/A	N/A	N/A	N/A	N/A	N/A	N/A	N/A
	2007	N/A	N/A	N/A	N/A	N/A	N/A	N/A	N/A	N/A	N/A	N/A	N/A	N/A
	2008	N/A	N/A	N/A	N/A	-	-	-	-	-	-	-	-	-
Short-Term	2004	N/A	N/A	N/A	N/A	N/A	N/A	N/A	N/A	N/A	N/A	N/A	N/A	N/A
	2005	N/A	N/A	N/A	N/A	N/A	N/A	N/A	N/A	N/A	N/A	N/A	N/A	N/A
	2006	N/A	N/A	N/A	N/A	N/A	N/A	N/A	N/A	N/A	N/A	N/A	N/A	N/A
	2007	N/A	N/A	N/A	N/A	N/A	N/A	N/A	N/A	N/A	N/A	N/A	N/A	N/A
	2008	N/A	N/A	N/A	N/A	-	-	-	-	-	-	-	-	-
Spot*	2004	N/A	N/A	N/A	N/A	N/A	N/A	N/A	N/A	N/A	N/A	N/A	N/A	N/A
	2005	N/A	N/A	N/A	N/A	N/A	N/A	N/A	N/A	N/A	N/A	N/A	N/A	N/A
	2006	N/A	N/A	N/A	N/A	N/A	N/A	N/A	N/A	N/A	N/A	N/A	N/A	N/A
	2007	N/A	N/A	N/A	N/A	N/A	N/A	N/A	N/A	N/A	N/A	N/A	N/A	N/A
	2008	N/A	N/A	N/A	N/A	1	-	-	-	-	-	-	-	1

Northeast Gateway received its first cargo in May 2008. In 2009 and 2010, several cargos that arrived at Northeast Gateway were discharged over the course of several months.

*Spot cargos are only identified for 2006 and later years. Prior to 2006, spot cargos could be included in either long-term or short-term types.

LNG Imports by Transaction Type

NORTHEAST GATEWAY (Number of Cargos)

(2 of 2)

Type	Year	Jan	Feb	Mar	Apr	May	Jun	Jul	Aug	Sep	Oct	Nov	Dec	Totals
Long-Term	2009	-	-	-	-	-	-	-	-	-	-	-	-	-
	2010	-	-	-	-	-	-	-	-	-	-	-	-	-
	2011	-	-	-	-	-	-	-	-	-	-	-	-	-
	2012	-	-	-	-	-	-	-	-	-	-	-	-	-
Short-Term	2009	-	-	-	-	-	-	-	-	-	-	-	-	-
	2010	-	-	-	-	-	-	-	-	-	-	-	-	-
	2011	-	-	-	-	-	-	-	-	-	-	-	-	-
	2012	-	-	-	-	-	-	-	-	-	-	-	-	-
Spot	2009	0.2	-	0.0	0.7	0.1	-	-	-	-	-	0.1	1.0	2.1
	2010	2.9	2.8	0.3	-	-	-	-	-	-	-	-	-	5.9
	2011	-	-	-	-	-	-	-	-	-	-	-	-	-
	2012	-	-	-	-	-	-	-	-	-	-	-	-	-

*Spot cargos are only identified for 2006 and later years. Prior to 2006, spot cargos could be included in either long-term or short-term types.

Northeast Gateway received its first cargo in May 2008. In 2009 and 2010, several cargos that arrived at Northeast Gateway were discharged over the course of several months.

LNG Imports by Transaction Type

CAMERON, LA (Number of Cargos)

(1 of 2)

Type	Year	Jan	Feb	Mar	Apr	May	Jun	Jul	Aug	Sep	Oct	Nov	Dec	Totals
Long-Term	2004	N/A	N/A	N/A	N/A	N/A	N/A	N/A	N/A	N/A	N/A	N/A	N/A	N/A
	2005	N/A	N/A	N/A	N/A	N/A	N/A	N/A	N/A	N/A	N/A	N/A	N/A	N/A
	2006	N/A	N/A	N/A	N/A	N/A	N/A	N/A	N/A	N/A	N/A	N/A	N/A	N/A
	2007	N/A	N/A	N/A	N/A	N/A	N/A	N/A	N/A	N/A	N/A	N/A	N/A	N/A
	2008	N/A	N/A	N/A	N/A	N/A	N/A	N/A	N/A	N/A	N/A	N/A	N/A	N/A
Short-Term	2004	N/A	N/A	N/A	N/A	N/A	N/A	N/A	N/A	N/A	N/A	N/A	N/A	N/A
	2005	N/A	N/A	N/A	N/A	N/A	N/A	N/A	N/A	N/A	N/A	N/A	N/A	N/A
	2006	N/A	N/A	N/A	N/A	N/A	N/A	N/A	N/A	N/A	N/A	N/A	N/A	N/A
	2007	N/A	N/A	N/A	N/A	N/A	N/A	N/A	N/A	N/A	N/A	N/A	N/A	N/A
	2008	N/A	N/A	N/A	N/A	N/A	N/A	N/A	N/A	N/A	N/A	N/A	N/A	N/A
Spot*	2004	N/A	N/A	N/A	N/A	N/A	N/A	N/A	N/A	N/A	N/A	N/A	N/A	N/A
	2005	N/A	N/A	N/A	N/A	N/A	N/A	N/A	N/A	N/A	N/A	N/A	N/A	N/A
	2006	N/A	N/A	N/A	N/A	N/A	N/A	N/A	N/A	N/A	N/A	N/A	N/A	N/A
	2007	N/A	N/A	N/A	N/A	N/A	N/A	N/A	N/A	N/A	N/A	N/A	N/A	N/A
	2008	N/A	N/A	N/A	N/A	N/A	N/A	N/A	N/A	N/A	N/A	N/A	N/A	N/A

Cameron received its first cargo in June 2009.

*Spot cargoes are only identified for 2006 and later years. Prior to 2006, spot cargoes could be included in either long-term or short-term types.

LNG Imports by Transaction Type CAMERON, LA (Number of Cargos)

(2 of 2)

Type	Year	Jan	Feb	Mar	Apr	May	Jun	Jul	Aug	Sep	Oct	Nov	Dec	Totals
Long-Term	2009	N/A	N/A	N/A	N/A	N/A	–	–	–	–	–	–	–	–
	2010	–	–	–	–	–	–	–	–	–	–	–	–	–
	2011	–	–	–	–	–	–	–	–	–	–	–	–	–
	2012	–	–	–	–	–	–	–	–	–	–	–	–	–
Short-Term	2009	N/A	N/A	N/A	N/A	N/A	1	1	–	–	–	1	–	3
	2010	1	–	–	–	–	–	–	–	–	–	–	–	1
	2011	–	–	1	1	–	–	–	–	–	–	–	–	2
	2012	–	–	–	–	–	–	–	–	–	–	1	–	1
Spot	2009	N/A	N/A	N/A	N/A	N/A	–	–	–	–	–	–	–	–
	2010	–	–	–	–	–	–	1	–	–	–	–	–	1
	2011	1	–	–	–	–	–	–	1	–	–	–	–	2
	2012	–	1	–	–	–	–	–	–	–	–	–	–	1

*Spot cargos are only identified for 2006 and later years. Prior to 2006, spot cargos could be included in either long-term or short-term types.

Cameron received its first cargo in June 2009.

LNG Imports by Transaction Type

NEPTUNE DWP (Number of Cargos)

(1 of 2)

Type	Year	Jan	Feb	Mar	Apr	May	Jun	Jul	Aug	Sep	Oct	Nov	Dec	Totals
Long-Term	2004	N/A	N/A	N/A	N/A	N/A	N/A	N/A	N/A	N/A	N/A	N/A	N/A	N/A
	2005	N/A	N/A	N/A	N/A	N/A	N/A	N/A	N/A	N/A	N/A	N/A	N/A	N/A
	2006	N/A	N/A	N/A	N/A	N/A	N/A	N/A	N/A	N/A	N/A	N/A	N/A	N/A
	2007	N/A	N/A	N/A	N/A	N/A	N/A	N/A	N/A	N/A	N/A	N/A	N/A	N/A
	2008	N/A	N/A	N/A	N/A	N/A	N/A	N/A	N/A	N/A	N/A	N/A	N/A	N/A
Short-Term	2004	N/A	N/A	N/A	N/A	N/A	N/A	N/A	N/A	N/A	N/A	N/A	N/A	N/A
	2005	N/A	N/A	N/A	N/A	N/A	N/A	N/A	N/A	N/A	N/A	N/A	N/A	N/A
	2006	N/A	N/A	N/A	N/A	N/A	N/A	N/A	N/A	N/A	N/A	N/A	N/A	N/A
	2007	N/A	N/A	N/A	N/A	N/A	N/A	N/A	N/A	N/A	N/A	N/A	N/A	N/A
	2008	N/A	N/A	N/A	N/A	N/A	N/A	N/A	N/A	N/A	N/A	N/A	N/A	N/A
Spot*	2004	N/A	N/A	N/A	N/A	N/A	N/A	N/A	N/A	N/A	N/A	N/A	N/A	N/A
	2005	N/A	N/A	N/A	N/A	N/A	N/A	N/A	N/A	N/A	N/A	N/A	N/A	N/A
	2006	N/A	N/A	N/A	N/A	N/A	N/A	N/A	N/A	N/A	N/A	N/A	N/A	N/A
	2007	N/A	N/A	N/A	N/A	N/A	N/A	N/A	N/A	N/A	N/A	N/A	N/A	N/A
	2008	N/A	N/A	N/A	N/A	N/A	N/A	N/A	N/A	N/A	N/A	N/A	N/A	N/A

Neptune received its first cargo in March 2010. That cargo and one other were partially discharged at Everett, MA.

*Spot cargos are only identified for 2006 and later years. Prior to 2006, spot cargos could be included in either long-term or short-term types.

LNG Imports by Transaction Type

NEPTUNE DWP (Number of Cargos)

(2 of 2)

Type	Year	Jan	Feb	Mar	Apr	May	Jun	Jul	Aug	Sep	Oct	Nov	Dec	Totals
Long-Term	2009	N/A	N/A	N/A	N/A	N/A	N/A	N/A	N/A	N/A	N/A	N/A	N/A	N/A
	2010	N/A	N/A	–	–	–	–	–	0.1	–	–	–	–	0.1
	2011	–	–	–	–	–	–	–	–	–	–	–	–	–
	2012	–	–	–	–	–	–	–	–	–	–	–	–	–
Short-Term	2009	N/A	N/A	N/A	N/A	N/A	N/A	N/A	N/A	N/A	N/A	N/A	N/A	N/A
	2010	N/A	N/A	0.4	–	–	–	–	–	–	–	–	–	0.4
	2011	–	–	–	–	–	–	–	–	–	–	–	–	–
	2012	–	–	–	–	–	–	–	–	–	–	–	–	–
Spot	2009	N/A	N/A	N/A	N/A	N/A	N/A	N/A	N/A	N/A	N/A	N/A	N/A	N/A
	2010	N/A	N/A	–	–	–	–	–	–	–	–	–	–	–
	2011	–	–	–	–	–	–	–	–	–	–	–	–	–
	2012	–	–	–	–	–	–	–	–	–	–	–	–	–

*Spot cargos are only identified for 2006 and later years. Prior to 2006, spot cargos could be included in either long-term or short-term types.

Neptune received its first cargo in March 2010. That cargo and one other were partially discharged at Everett, MA.

LNG Imports by Transaction Type

GOLDEN PASS, TX (Number of Cargos)

(1 of 2)

Type	Year	Jan	Feb	Mar	Apr	May	Jun	Jul	Aug	Sep	Oct	Nov	Dec	Totals
Long-Term	2004	N/A	N/A	N/A	N/A	N/A	N/A	N/A	N/A	N/A	N/A	N/A	N/A	N/A
	2005	N/A	N/A	N/A	N/A	N/A	N/A	N/A	N/A	N/A	N/A	N/A	N/A	N/A
	2006	N/A	N/A	N/A	N/A	N/A	N/A	N/A	N/A	N/A	N/A	N/A	N/A	N/A
	2007	N/A	N/A	N/A	N/A	N/A	N/A	N/A	N/A	N/A	N/A	N/A	N/A	N/A
	2008	N/A	N/A	N/A	N/A	N/A	N/A	N/A	N/A	N/A	N/A	N/A	N/A	N/A
Short-Term	2004	N/A	N/A	N/A	N/A	N/A	N/A	N/A	N/A	N/A	N/A	N/A	N/A	N/A
	2005	N/A	N/A	N/A	N/A	N/A	N/A	N/A	N/A	N/A	N/A	N/A	N/A	N/A
	2006	N/A	N/A	N/A	N/A	N/A	N/A	N/A	N/A	N/A	N/A	N/A	N/A	N/A
	2007	N/A	N/A	N/A	N/A	N/A	N/A	N/A	N/A	N/A	N/A	N/A	N/A	N/A
	2008	N/A	N/A	N/A	N/A	N/A	N/A	N/A	N/A	N/A	N/A	N/A	N/A	N/A
Spot*	2004	N/A	N/A	N/A	N/A	N/A	N/A	N/A	N/A	N/A	N/A	N/A	N/A	N/A
	2005	N/A	N/A	N/A	N/A	N/A	N/A	N/A	N/A	N/A	N/A	N/A	N/A	N/A
	2006	N/A	N/A	N/A	N/A	N/A	N/A	N/A	N/A	N/A	N/A	N/A	N/A	N/A
	2007	N/A	N/A	N/A	N/A	N/A	N/A	N/A	N/A	N/A	N/A	N/A	N/A	N/A
	2008	N/A	N/A	N/A	N/A	N/A	N/A	N/A	N/A	N/A	N/A	N/A	N/A	N/A

Golden Pass received its first cargo in November 2010.

*Spot cargoes are only identified for 2006 and later years. Prior to 2006, spot cargoes could be included in either long-term or short-term types.

LNG Imports by Transaction Type

GOLDEN PASS, TX (Number of Cargos)

(2 of 2)

Type	Year	Jan	Feb	Mar	Apr	May	Jun	Jul	Aug	Sep	Oct	Nov	Dec	Totals
Long-Term	2009	N/A	N/A	N/A	N/A	N/A	N/A	N/A	N/A	N/A	N/A	N/A	N/A	N/A
	2010	N/A	N/A	N/A	N/A	N/A	N/A	N/A	N/A	N/A	N/A	–	–	–
	2011	–	–	–	–	4	1	–	–	–	–	–	–	5
	2012	–	–	–	–	–	–	–	–	–	–	–	–	–
Short-Term	2009	N/A	N/A	N/A	N/A	N/A	N/A	N/A	N/A	N/A	N/A	N/A	N/A	N/A
	2010	N/A	N/A	N/A	N/A	N/A	N/A	N/A	N/A	N/A	N/A	–	–	–
	2011	–	–	–	–	–	–	–	–	–	–	–	–	–
	2012	–	–	–	–	–	–	–	–	–	–	–	–	–
Spot	2009	N/A	N/A	N/A	N/A	N/A	N/A	N/A	N/A	N/A	N/A	N/A	N/A	N/A
	2010	N/A	N/A	N/A	N/A	N/A	N/A	N/A	N/A	N/A	N/A	2	1	3
	2011	1	–	1	1	–	–	–	–	–	–	–	–	3
	2012	–	–	–	–	–	–	–	–	–	–	–	–	–

*Spot cargos are only identified for 2006 and later years. Prior to 2006, spot cargos could be included in either long-term or short-term types.

Golden Pass received its first cargo in November 2010.

LNG Imports by Transaction Type

GULF LNG, MS (Number of Cargos)

(1 of 2)

Type	Year	Jan	Feb	Mar	Apr	May	Jun	Jul	Aug	Sep	Oct	Nov	Dec	Totals
Long-Term	2004	N/A	N/A	N/A	N/A	N/A	N/A	N/A	N/A	N/A	N/A	N/A	N/A	N/A
	2005	N/A	N/A	N/A	N/A	N/A	N/A	N/A	N/A	N/A	N/A	N/A	N/A	N/A
	2006	N/A	N/A	N/A	N/A	N/A	N/A	N/A	N/A	N/A	N/A	N/A	N/A	N/A
	2007	N/A	N/A	N/A	N/A	N/A	N/A	N/A	N/A	N/A	N/A	N/A	N/A	N/A
	2008	N/A	N/A	N/A	N/A	N/A	N/A	N/A	N/A	N/A	N/A	N/A	N/A	N/A
Short-Term	2004	N/A	N/A	N/A	N/A	N/A	N/A	N/A	N/A	N/A	N/A	N/A	N/A	N/A
	2005	N/A	N/A	N/A	N/A	N/A	N/A	N/A	N/A	N/A	N/A	N/A	N/A	N/A
	2006	N/A	N/A	N/A	N/A	N/A	N/A	N/A	N/A	N/A	N/A	N/A	N/A	N/A
	2007	N/A	N/A	N/A	N/A	N/A	N/A	N/A	N/A	N/A	N/A	N/A	N/A	N/A
	2008	N/A	N/A	N/A	N/A	N/A	N/A	N/A	N/A	N/A	N/A	N/A	N/A	N/A
Spot*	2004	N/A	N/A	N/A	N/A	N/A	N/A	N/A	N/A	N/A	N/A	N/A	N/A	N/A
	2005	N/A	N/A	N/A	N/A	N/A	N/A	N/A	N/A	N/A	N/A	N/A	N/A	N/A
	2006	N/A	N/A	N/A	N/A	N/A	N/A	N/A	N/A	N/A	N/A	N/A	N/A	N/A
	2007	N/A	N/A	N/A	N/A	N/A	N/A	N/A	N/A	N/A	N/A	N/A	N/A	N/A
	2008	N/A	N/A	N/A	N/A	N/A	N/A	N/A	N/A	N/A	N/A	N/A	N/A	N/A

Gulf LNG received its first cargo in June 2011.

*Spot cargoes are only identified for 2006 and later years. Prior to 2006, spot cargoes could be included in either long-term or short-term types.

LNG Imports by Transaction Type

GULF LNG, MS (Number of Cargos)

(2 of 2)

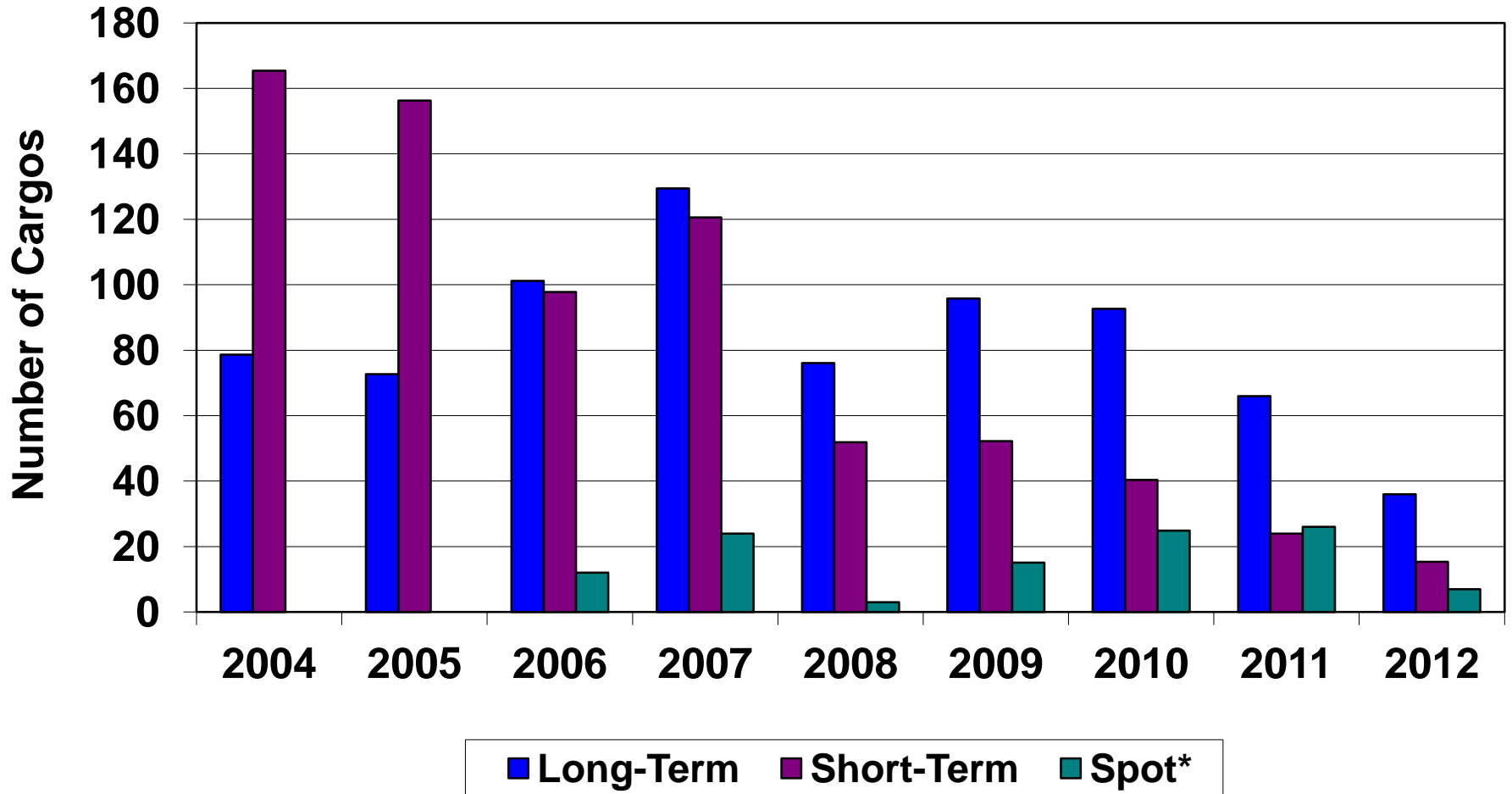
Type	Year	Jan	Feb	Mar	Apr	May	Jun	Jul	Aug	Sep	Oct	Nov	Dec	Totals
Long-Term	2009	N/A	N/A	N/A	N/A	N/A	N/A	N/A	N/A	N/A	N/A	N/A	N/A	N/A
	2010	N/A	N/A	N/A	N/A	N/A	N/A	N/A	N/A	N/A	N/A	N/A	N/A	N/A
	2011	N/A	N/A	N/A	N/A	N/A	–	–	–	–	–	–	–	–
	2012	–	–	–	–	–	–	–	–	–	–	–	–	–
Short-Term	2009	N/A	N/A	N/A	N/A	N/A	N/A	N/A	N/A	N/A	N/A	N/A	N/A	N/A
	2010	N/A	N/A	N/A	N/A	N/A	N/A	N/A	N/A	N/A	N/A	N/A	N/A	N/A
	2011	N/A	N/A	N/A	N/A	N/A	–	–	–	–	–	–	–	–
	2012	–	–	–	–	–	–	–	–	–	–	–	–	–
Spot	2009	N/A	N/A	N/A	N/A	N/A	N/A	N/A	N/A	N/A	N/A	N/A	N/A	N/A
	2010	N/A	N/A	N/A	N/A	N/A	N/A	N/A	N/A	N/A	N/A	N/A	N/A	N/A
	2011	N/A	N/A	N/A	N/A	N/A	2.0	–	–	–	–	–	–	2.0
	2012	–	–	–	–	–	–	–	–	–	–	–	–	–

*Spot cargoes are only identified for 2006 and later years. Prior to 2006, spot cargoes could be included in either long-term or short-term types.

Gulf LNG received its first cargo in June 2011.

LNG Imports by Transaction Type

All CONUS Terminals - 2004 - 2012**

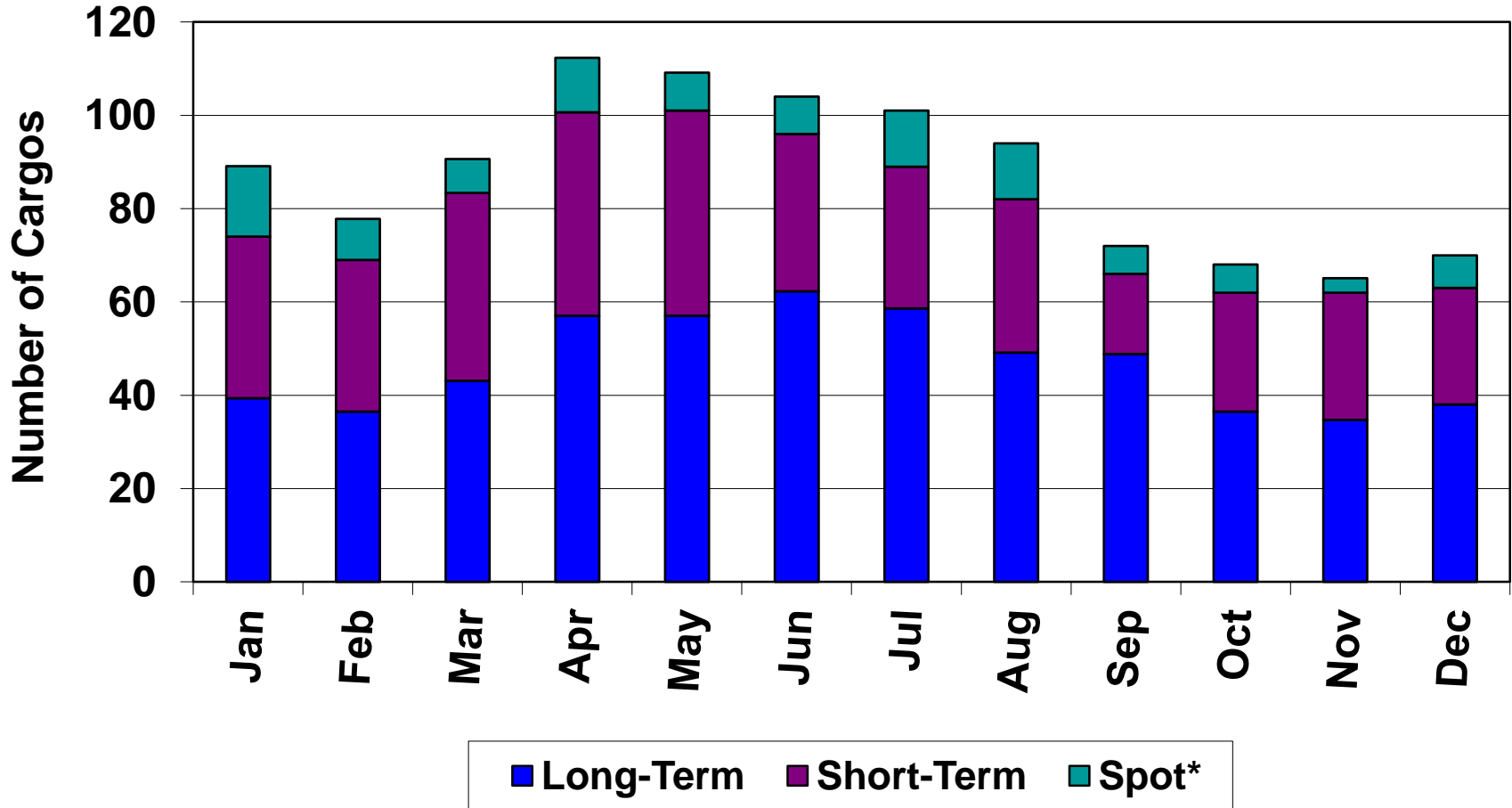


*Spot cargos are only identified for 2006 and later years. Prior to 2006, spot cargos could be included in either long-term or short-term types.

**2012 data is through November

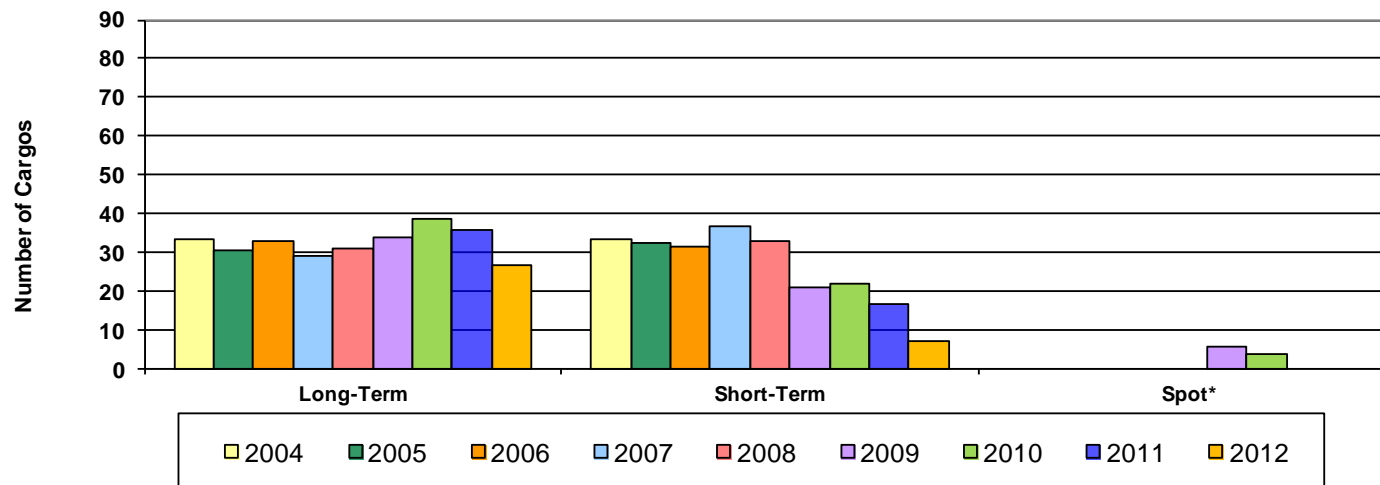
LNG Imports by Transaction Type

All CONUS Terminals - 2006 - 2011



*Spot cargoes are only identified for 2006 and later years. Prior to 2006, spot cargoes could be included in either long-term or short-term types.

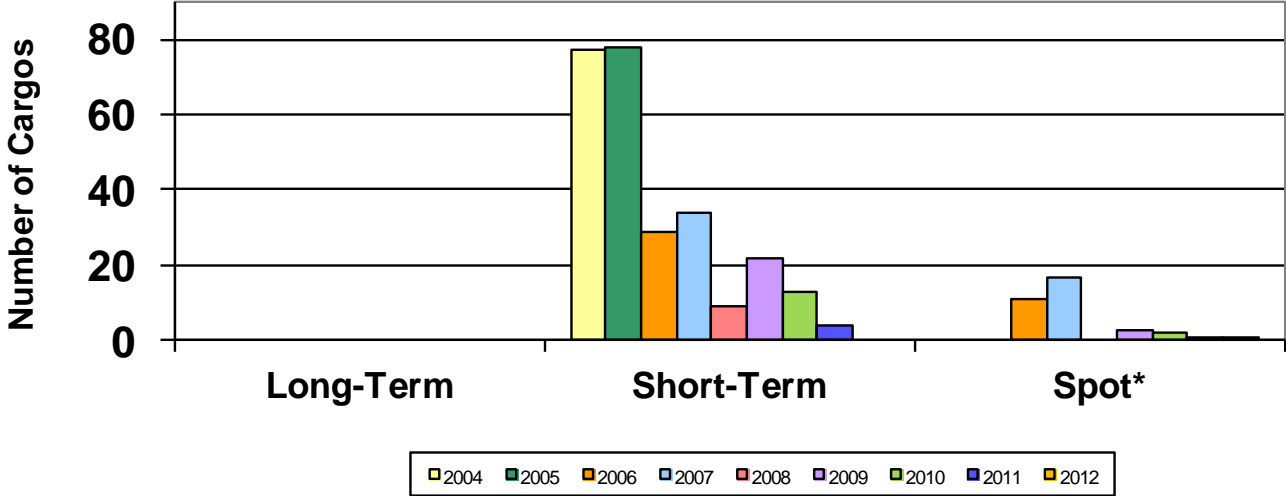
LNG Imports by Transaction Type - Everett 2004-2012**



*Spot cargoes are only identified for 2006 and later years. Prior to 2006, spot cargoes could be included in either long-term or short-term types.

**2012 data is through November

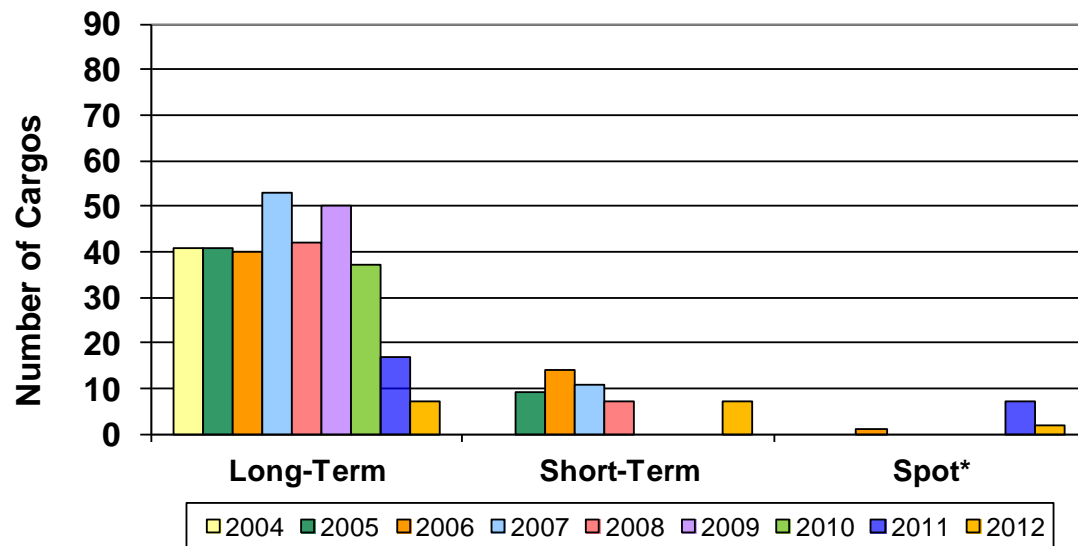
LNG Imports by Transaction Type - Cove Point 2004-2012**



*Spot cargoes are only identified for 2006 and later years. Prior to 2006, spot cargoes could be included in either long-term or short-term types.

**2012 data is through November

LNG Imports by Transaction Type - Elba Island 2004-2012**

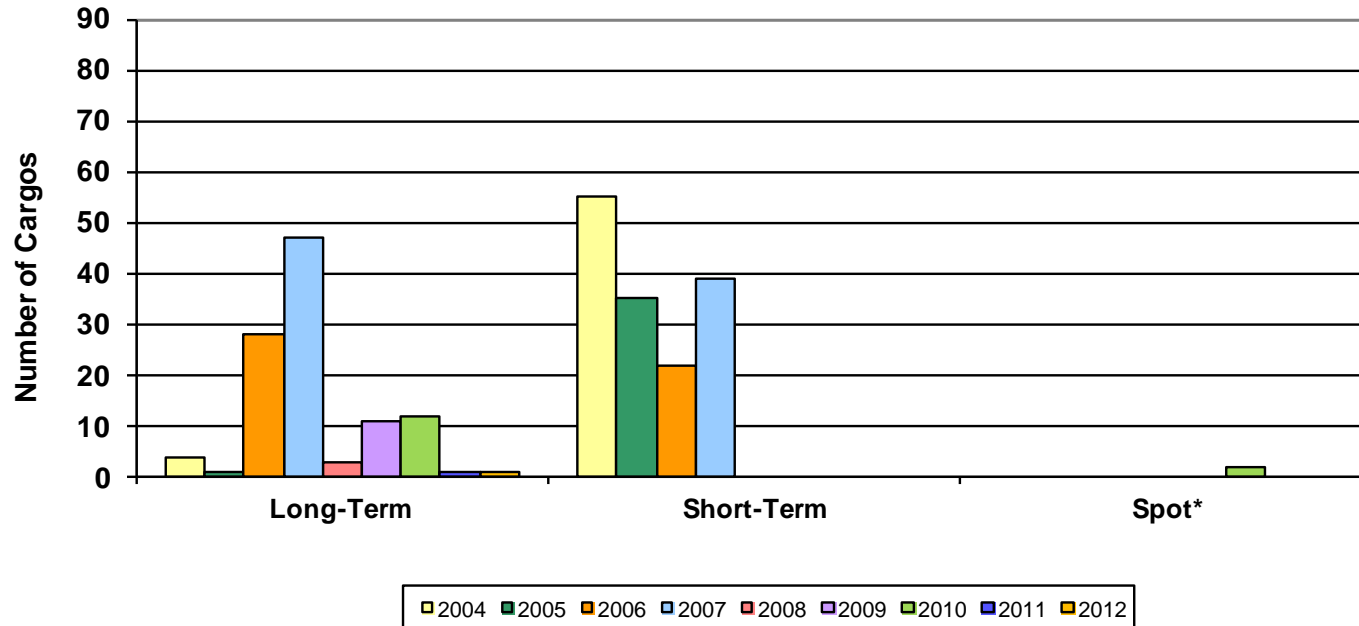


*Spot cargoes are only identified for 2006 and later years. Prior to 2006, spot cargoes could be included in either long-term or short-term types.

**2012 data is through November

LNG Imports by Transaction Type - Lake Charles

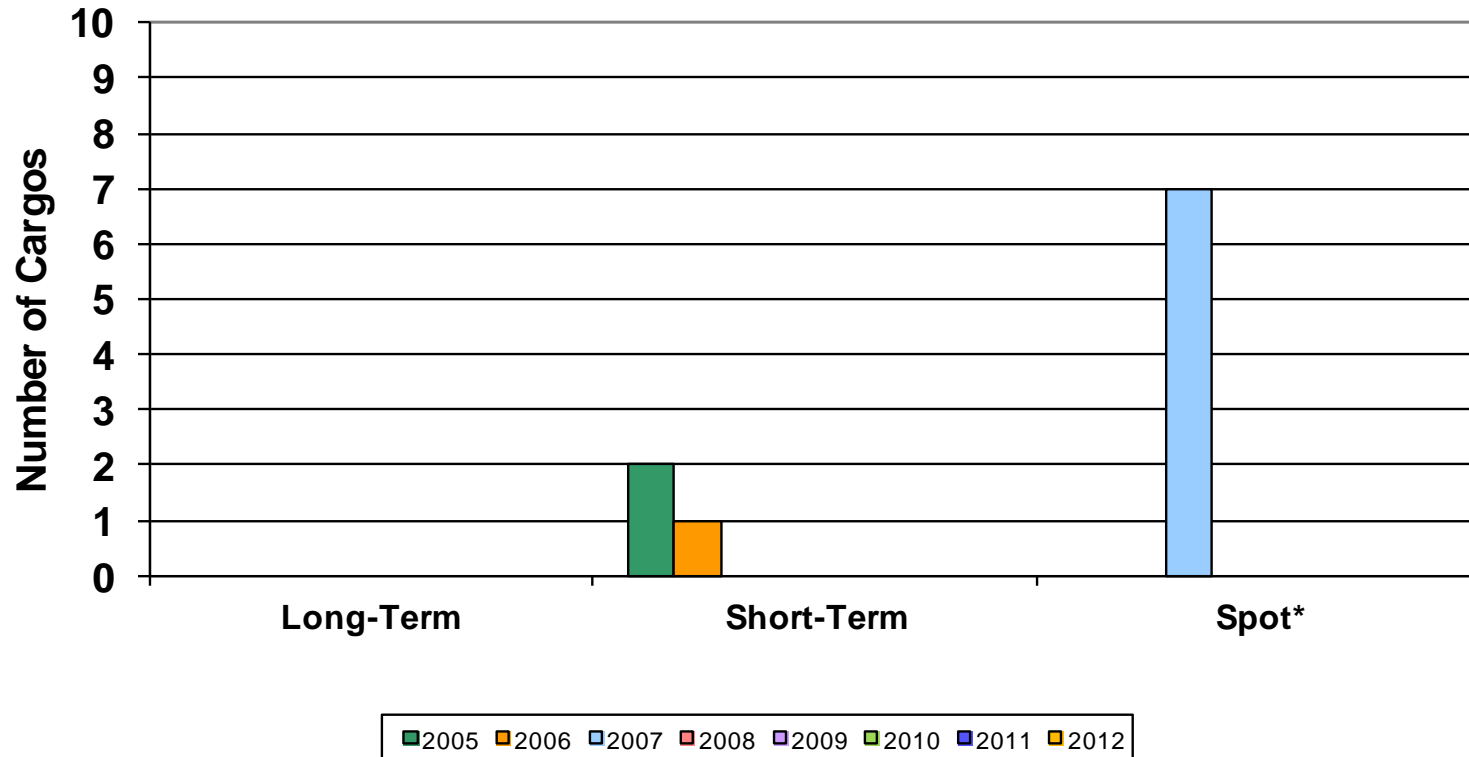
2004-2012**



*Spot cargoes are only identified for 2006 and later years. Prior to 2006, spot cargoes could be included in either long-term or short-term types.

**2012 data is through November

LNG Imports by Transaction Type - Gulf Gateway 2005-2012**

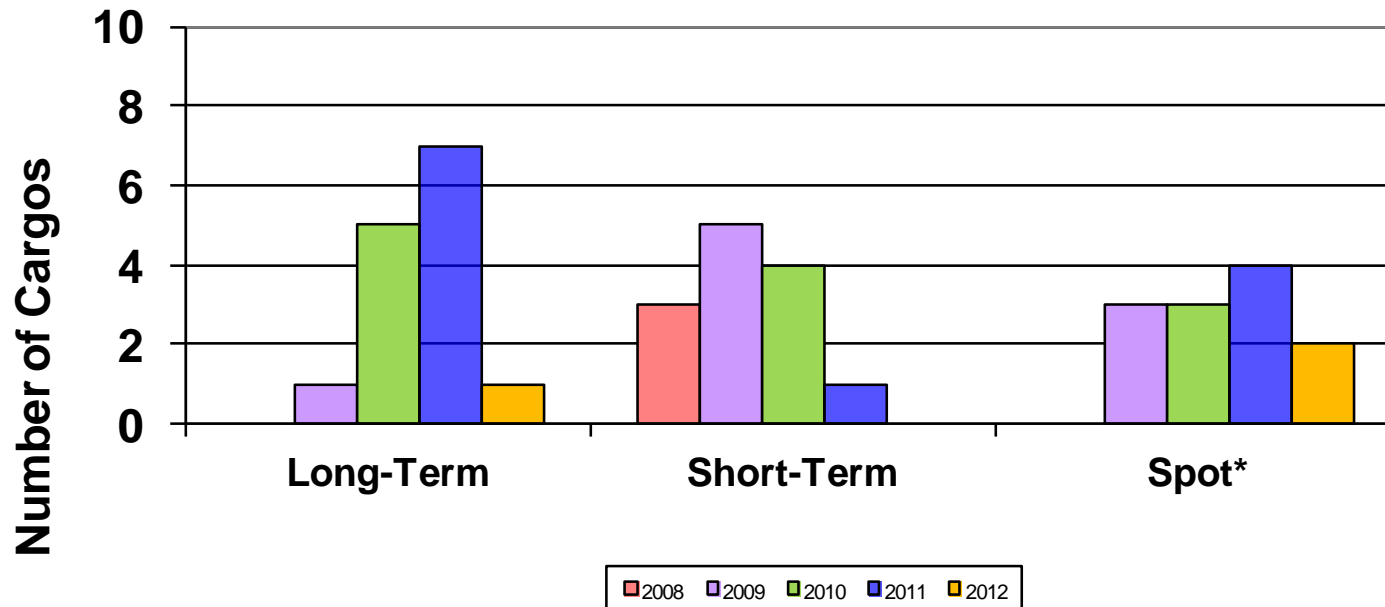


*Spot cargoes are only identified for 2006 and later years. Prior to 2006, spot cargoes could be included in either long-term or short-term types.

Excelerate Energy has announced that it will retire the Gulf Gateway terminal in the near future.

**2012 data is through November

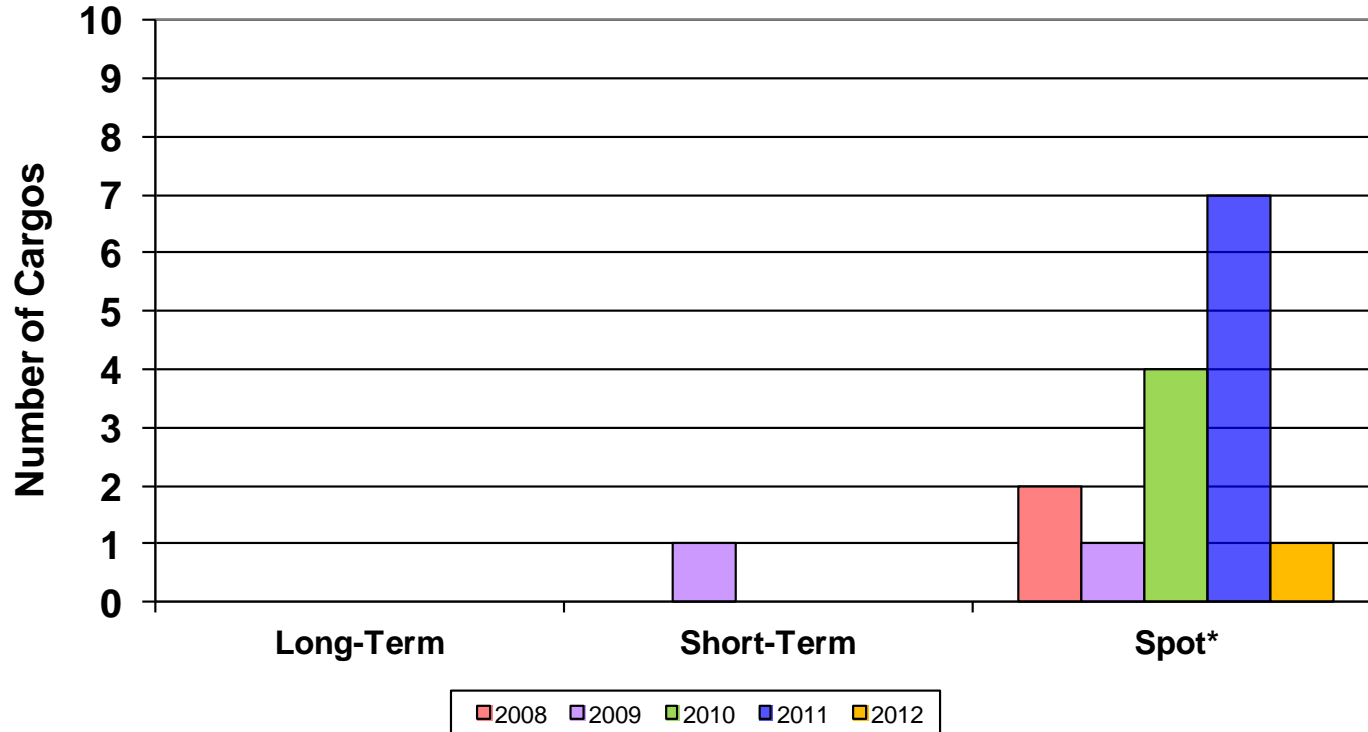
LNG Imports by Transaction Type - Sabine Pass 2008-2012**



*Spot cargoes are only identified for 2006 and later years. Prior to 2006, spot cargoes could be included in either long-term or short-term types.

**2012 data is through November

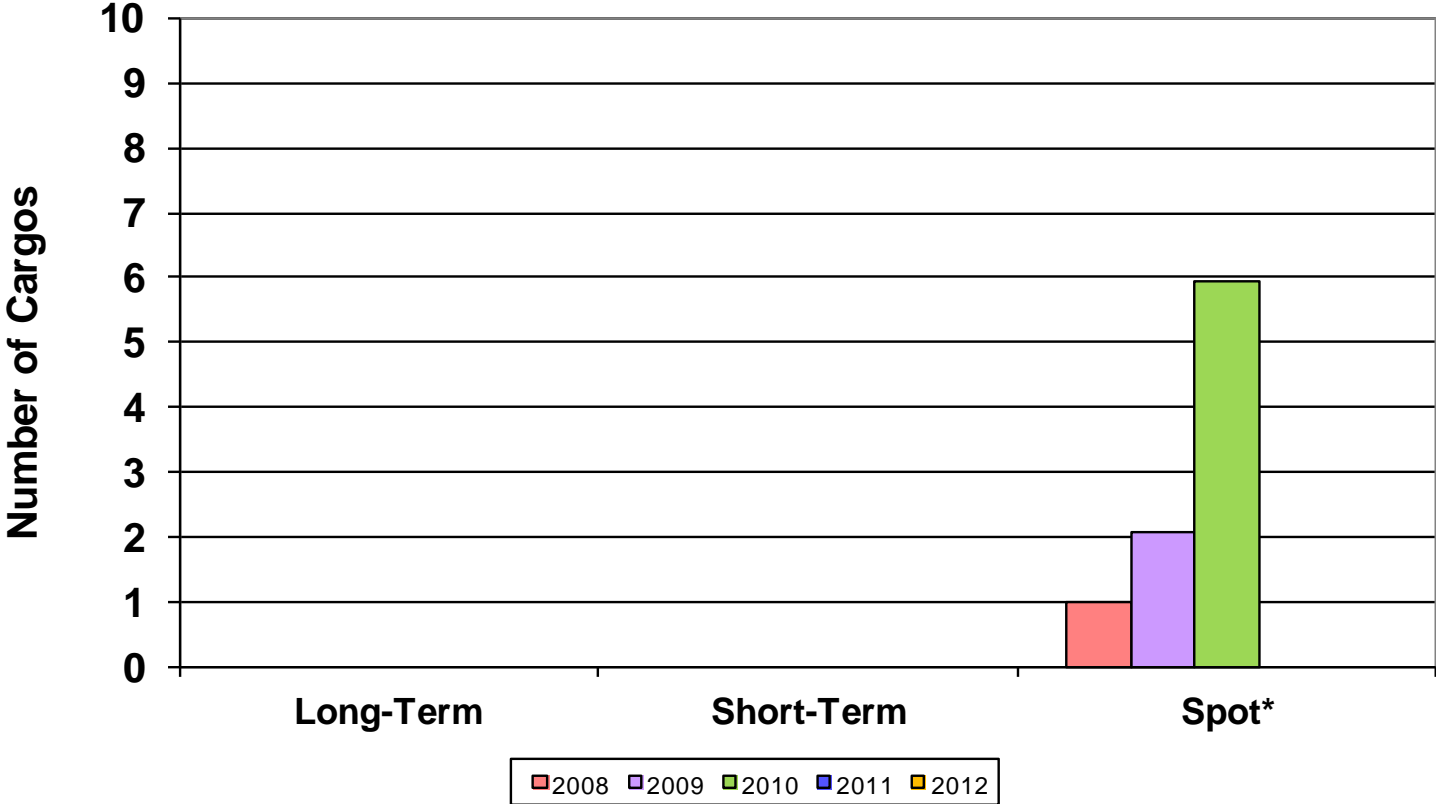
LNG Imports by Transaction Type - Freeport 2008-2012**



*Spot cargoes are only identified for 2006 and later years. Prior to 2006, spot cargoes could be included in either long-term or short-term types.

**2012 data is through November

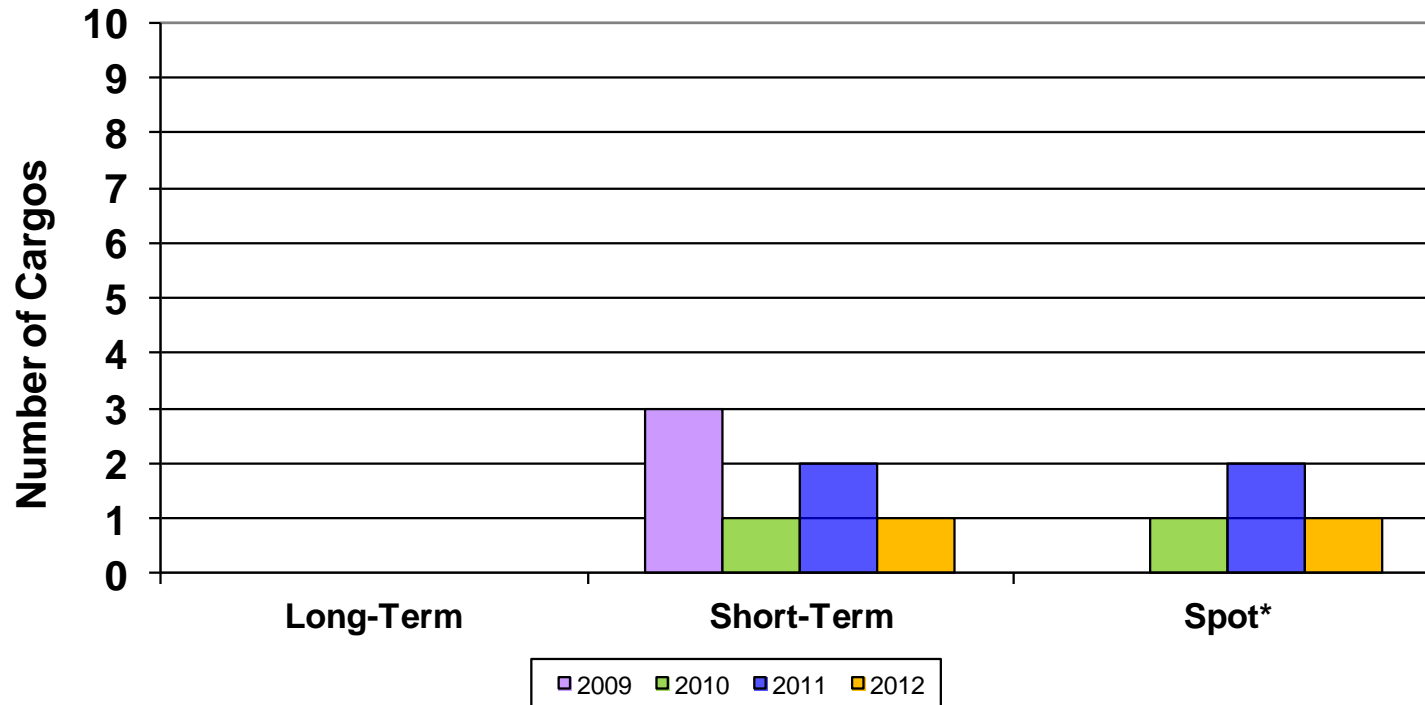
LNG Imports by Transaction Type - Northeast Gateway 2008-2012**



*Spot cargos are only identified for 2006 and later years. Prior to 2006, spot cargos could be included in either long-term or short-term types.

**2012 data is through November

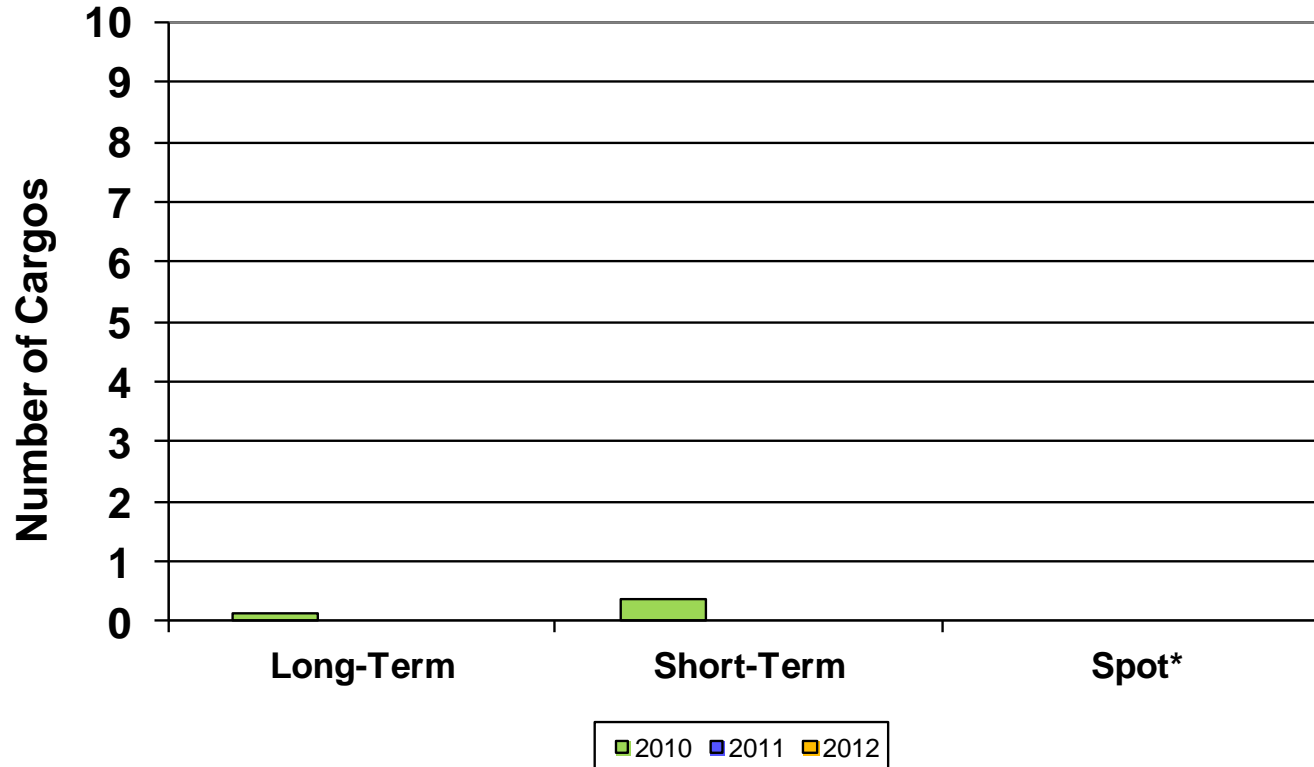
LNG Imports by Transaction Type - Cameron 2009-2012**



*Spot cargoes are only identified for 2006 and later years. Prior to 2006, spot cargoes could be included in either long-term or short-term types.

**2012 data is through November

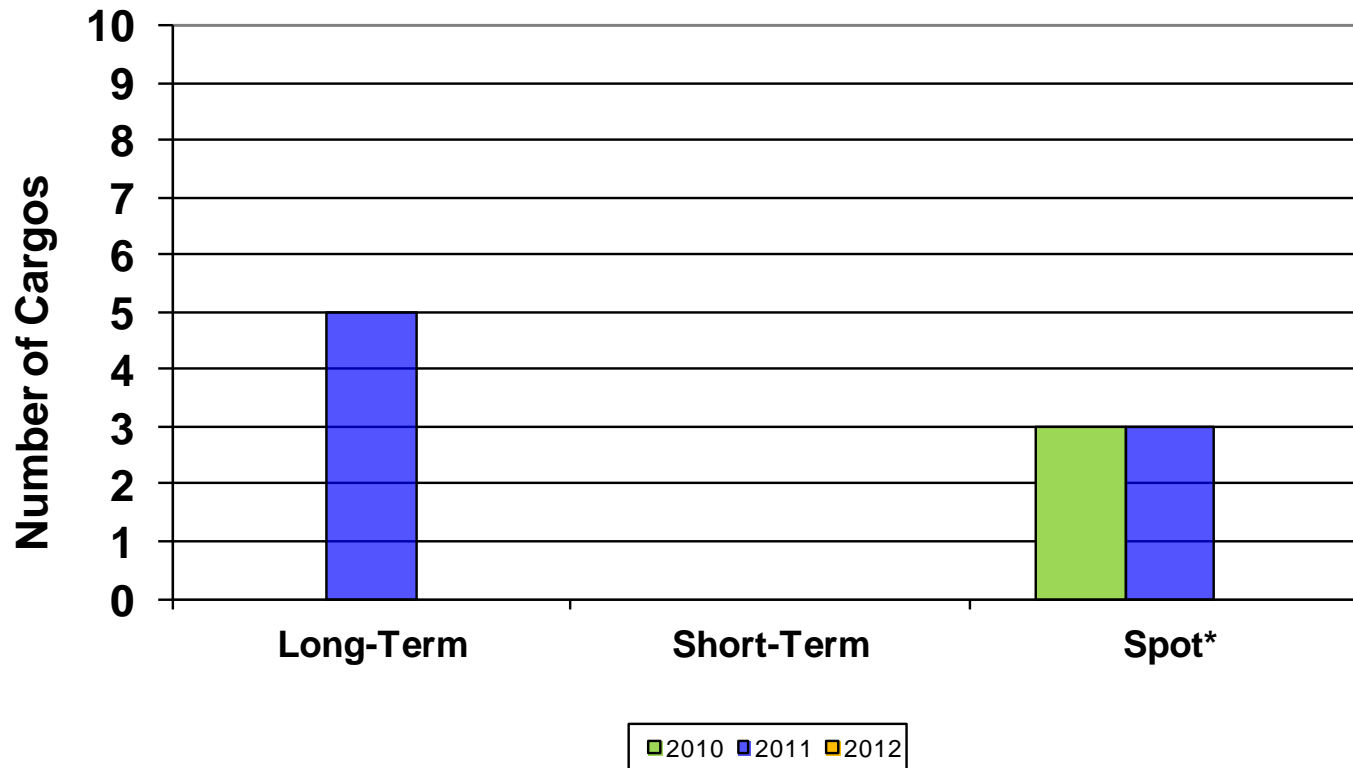
LNG Imports by Transaction Type - Neptune DWP 2009-2012**



*Spot cargos are only identified for 2006 and later years. Prior to 2006, spot cargos could be included in either long-term or short-term types.

**2012 data is through November

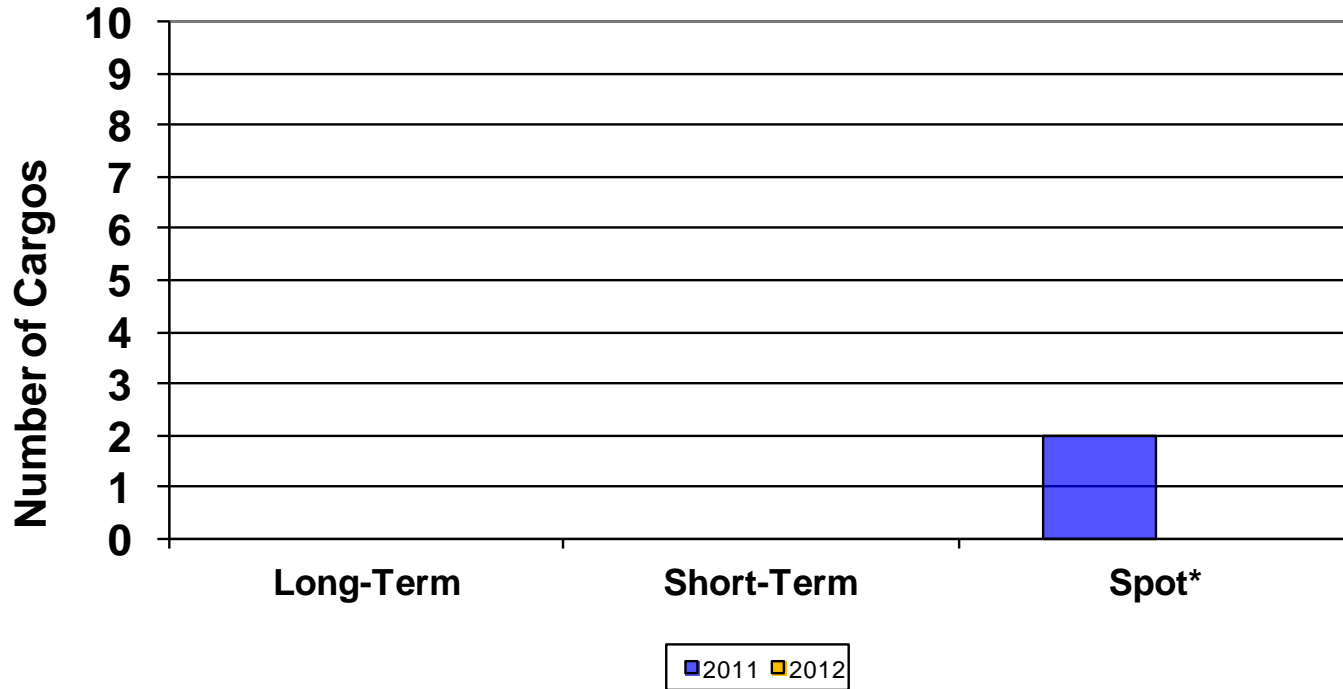
LNG Imports by Transaction Type - Golden Pass 2010-2012**



*Spot cargoes are only identified for 2006 and later years. Prior to 2006, spot cargoes could be included in either long-term or short-term types.

**2012 data is through November

LNG Imports by Transaction Type - Gulf LNG 2011-2012**



*Spot cargoes are only identified for 2006 and later years. Prior to 2006, spot cargoes could be included in either long-term or short-term types.

**2012 data is through November

Annual LNG Imports by Transaction Type (Billion cubic feet)

(1 of 3)

Terminal	Transaction Type*									
		2004	2005	2006	2007	2008	2009	2010	2011	2012**
Everett MA	Long-Term	84.8	81.9	89.7	82.2	78.3	88.6	101.6	94.4	68.8
	Short-Term	89	86.6	86.4	101.5	87	50.7	36	40.9	12.4
	Spot	N/A	N/A	–	–	–	16.6	11.4	–	–
Cove Point MD	Long-Term	–	–	–	–	–	–	–	–	–
	Short-Term	209.3	221.7	84.6	98.1	25.9	64.0	37.4	11.6	–
	Spot	N/A	N/A	32	50.1	–	8.3	6	2.4	2.8
Elba Island GA	Long-Term	105.2	107.1	104.4	145.4	117.8	142.2	106.5	48	19.9
	Short-Term	–	24.9	39.8	24.8	17.9	–	–	–	26.8
	Spot	N/A	N/A	2.6	–	–	–	–	27.7	7.0
Lake Charles LA	Long-Term	12.0	2.6	81.1	139.6	8.9	31.3	33.2	2.3	2.5
	Short-Term	151.8	101.2	62.5	111.9	–	–	–	–	–
	Spot	N/A	N/A	–	–	–	–	5.8	–	–

*Spot cargos are only identified for 2006 and later years. Prior to 2006, spot cargos could be included in either long-term or short-term types.

**2012 data is through November

Annual LNG Imports by Transaction Type (Billion cubic feet)

(2 of 3)

Terminal	Transaction Type*	2004	2005	2006	2007	2008	2009	2010	2011	2012**
Gulf Gateway	Long-Term	N/A	–	–	–	–	–	–	–	–
	Short-Term	N/A	5.2	0.5	–	–	–	–	–	–
	Spot	N/A	N/A	–	17.3	–	–	–	–	–
Sabine Pass LA	Long-Term	N/A	N/A	N/A	N/A	–	4.2	20	25	3.3
	Short-Term	N/A	N/A	N/A	N/A	9.2	16.4	14	2.6	–
	Spot	N/A	N/A	N/A	N/A	–	8.5	10.9	18	5.7
Freeport TX	Long-Term	N/A	N/A	N/A	N/A	–	–	–	–	–
	Short-Term	N/A	N/A	N/A	N/A	–	2.8	–	–	–
	Spot	N/A	N/A	N/A	N/A	5.7	3	12.2	21.4	2.9
Northeast Gateway	Long-Term	N/A	N/A	N/A	N/A	–	–	–	–	–
	Short-Term	N/A	N/A	N/A	N/A	–	–	–	–	–
	Spot	N/A	N/A	N/A	N/A	0.9	5.7	14.7	–	–

*Spot cargos are only identified for 2006 and later years. Prior to 2006, spot cargos could be included in either long-term or short-term types.

**2012 data is through November

Annual LNG Imports by Transaction Type (Billion cubic feet)

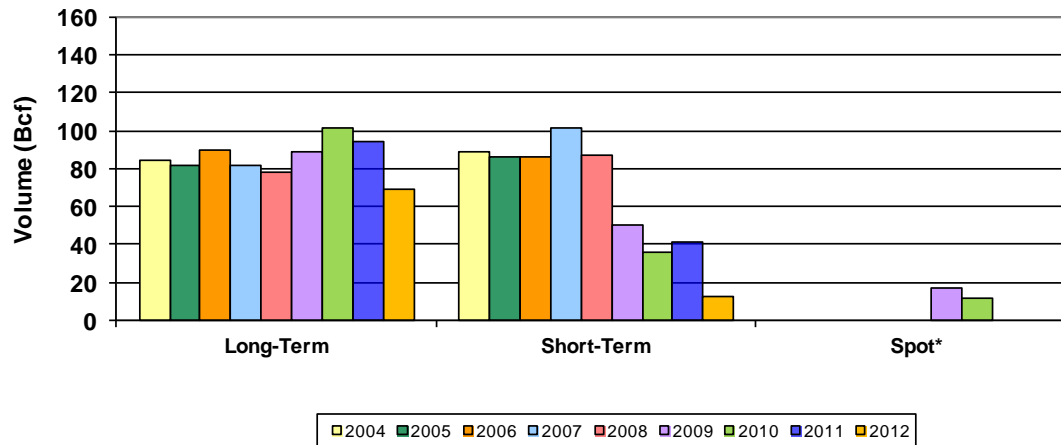
(3 of 3)

Terminal	Transaction Type*									
		2004	2005	2006	2007	2008	2009	2010	2011	2012**
Cameron LA	Long-Term	N/A	N/A	N/A	N/A	N/A	–	–	–	–
	Short-Term	N/A	N/A	N/A	N/A	N/A	9.7	4.2	6.8	2.9
	Spot	N/A	N/A	N/A	N/A	N/A	–	2.8	5.8	2.8
Neptune DWP	Long-Term	N/A	N/A	N/A	N/A	N/A	N/A	0.3	–	–
	Short-Term	N/A	N/A	N/A	N/A	N/A	N/A	1.0	–	–
	Spot	N/A	N/A	N/A	N/A	N/A	N/A	–	–	–
Golden Pass TX	Long-Term	N/A	N/A	N/A	N/A	N/A	N/A	–	23.4	–
	Short-Term	N/A	N/A	N/A	N/A	N/A	N/A	–	–	–
	Spot	N/A	N/A	N/A	N/A	N/A	N/A	13.0	12.9	–
Gulf LNG MS	Long-Term	N/A	N/A	N/A	N/A	N/A	N/A	N/A	–	–
	Short-Term	N/A	N/A	N/A	N/A	N/A	N/A	N/A	–	–
	Spot	N/A	N/A	N/A	N/A	N/A	N/A	N/A	5.8	–

*Spot cargos are only identified for 2006 and later years. Prior to 2006, spot cargos could be included in either long-term or short-term types.

**2012 data is through November

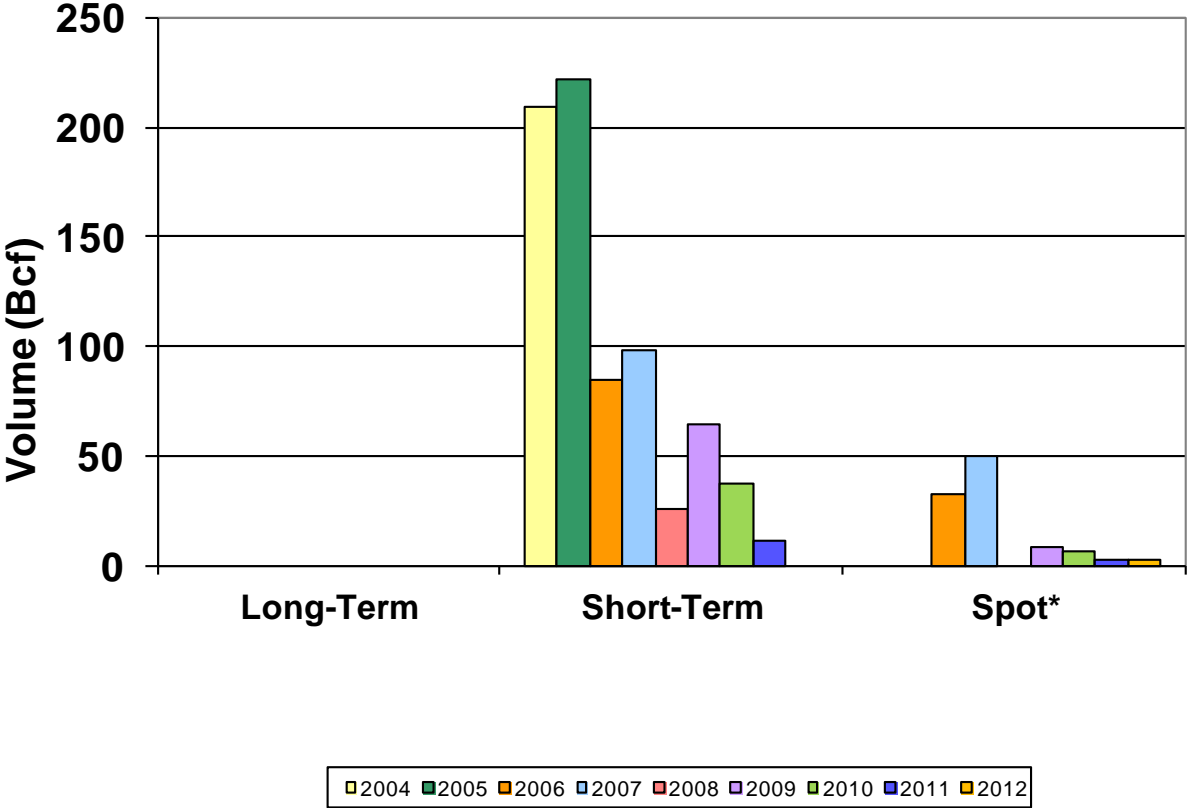
LNG Imports by Transaction Type - Everett 2004-2012**



*Spot cargos are only identified for 2006 and later years. Prior to 2006, spot cargos could be included in either long-term or short-term types.

**2012 data is through November

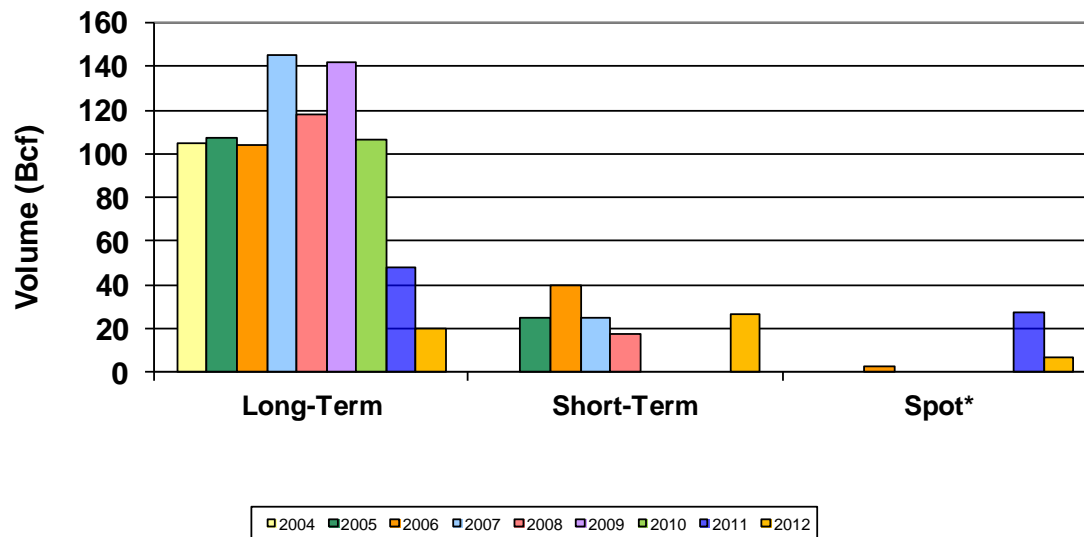
LNG Imports by Transaction Type - Cove Point 2004-2012**



*Spot cargos are only identified for 2006 and later years. Prior to 2006, spot cargos could be included in either long-term or short-term types.

**2012 data is through November

LNG Imports by Transaction Type - Elba Island 2004-2012**

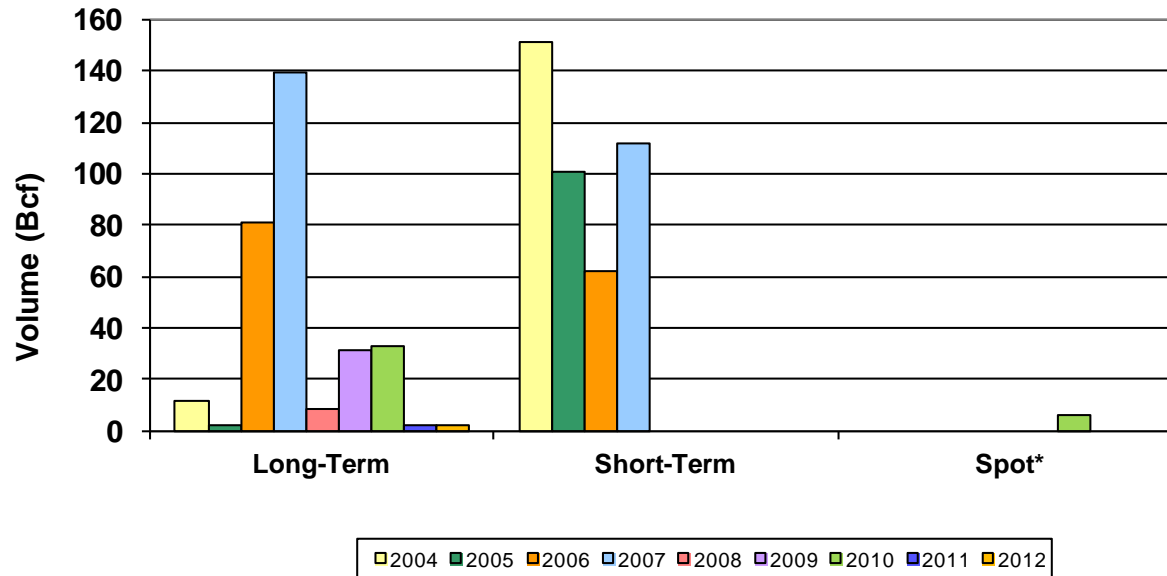


*Spot cargos are only identified for 2006 and later years. Prior to 2006, spot cargos could be included in either long-term or short-term types.

**2012 data is through November

LNG Imports by Transaction Type - Lake Charles

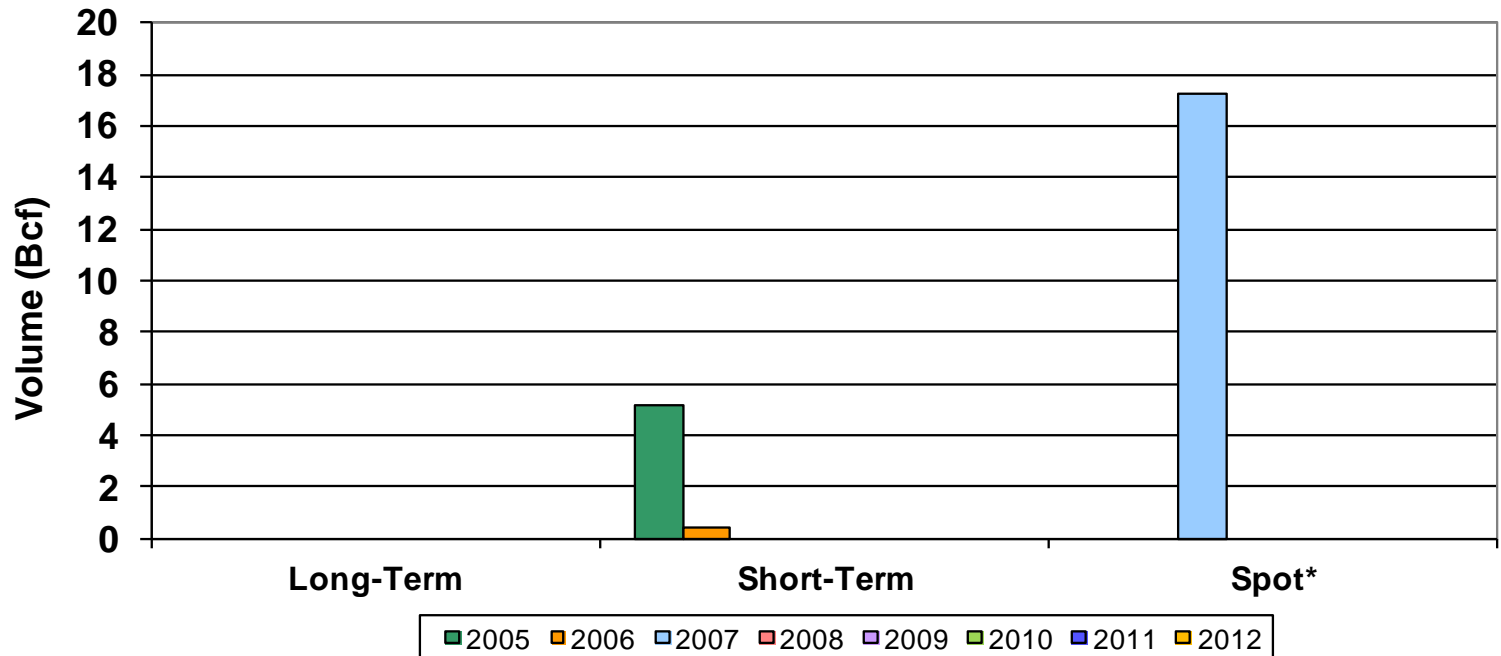
2004-2012**



*Spot cargos are only identified for 2006 and later years. Prior to 2006, spot cargos could be included in either long-term or short-term types.

**2012 data is through November

LNG Imports by Transaction Type - Gulf Gateway 2005-2012**

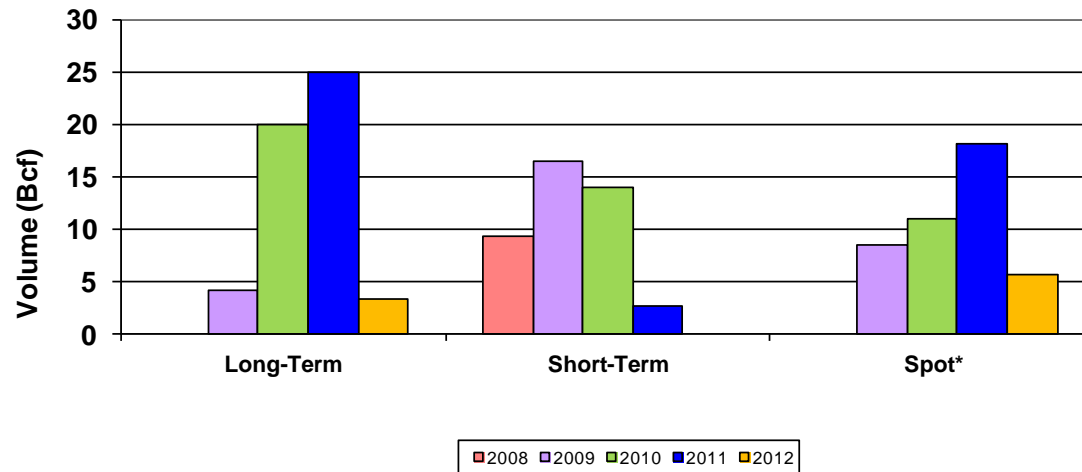


*Spot cargos are only identified for 2006 and later years. Prior to 2006, spot cargos could be included in either long-term or short-term types.

Excelerate Energy has announced that it will retire the Gulf Gateway terminal in the near future.

**2012 data is through November

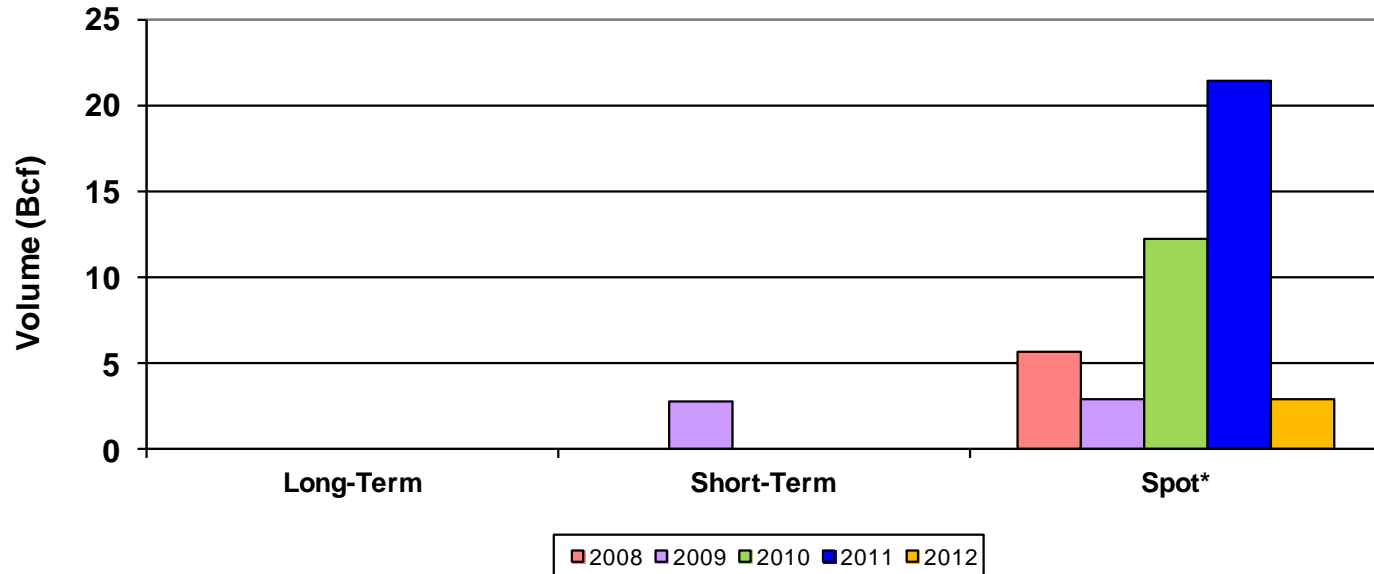
LNG Imports by Transaction Type - Sabine Pass 2008-2012**



*Spot cargos are only identified for 2006 and later years. Prior to 2006, spot cargos could be included in either long-term or short-term types.

**2012 data is through November

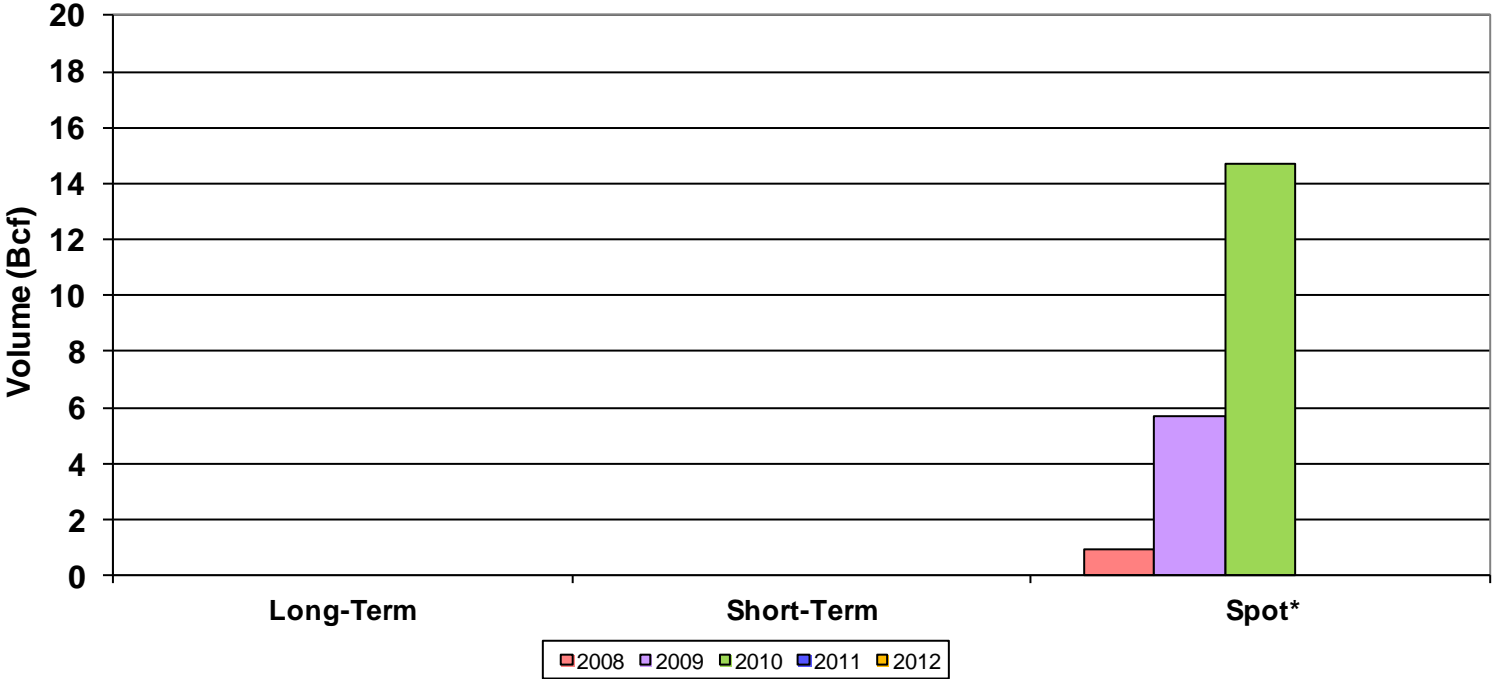
LNG Imports by Transaction Type - Freeport 2008-2012**



*Spot cargos are only identified for 2006 and later years. Prior to 2006, spot cargos could be included in either long-term or short-term types.

**2012 data is through November

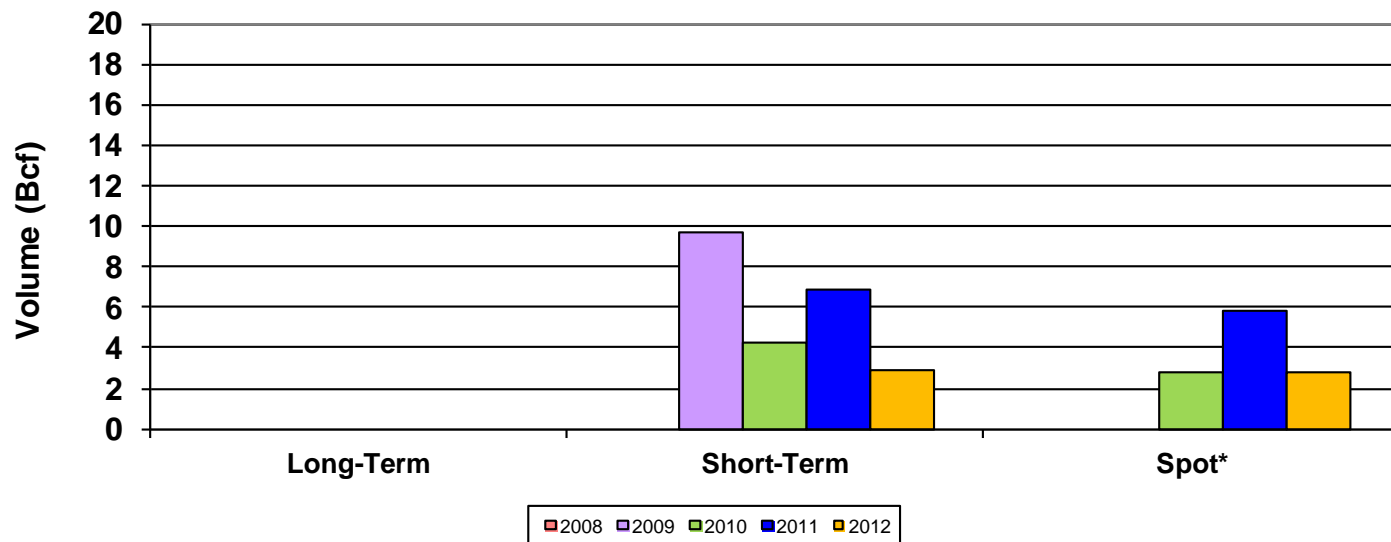
LNG Imports by Transaction Type - Northeast Gateway 2008-2012**



*Spot cargos are only identified for 2006 and later years. Prior to 2006, spot cargos could be included in either long-term or short-term types.

**2012 data is through November

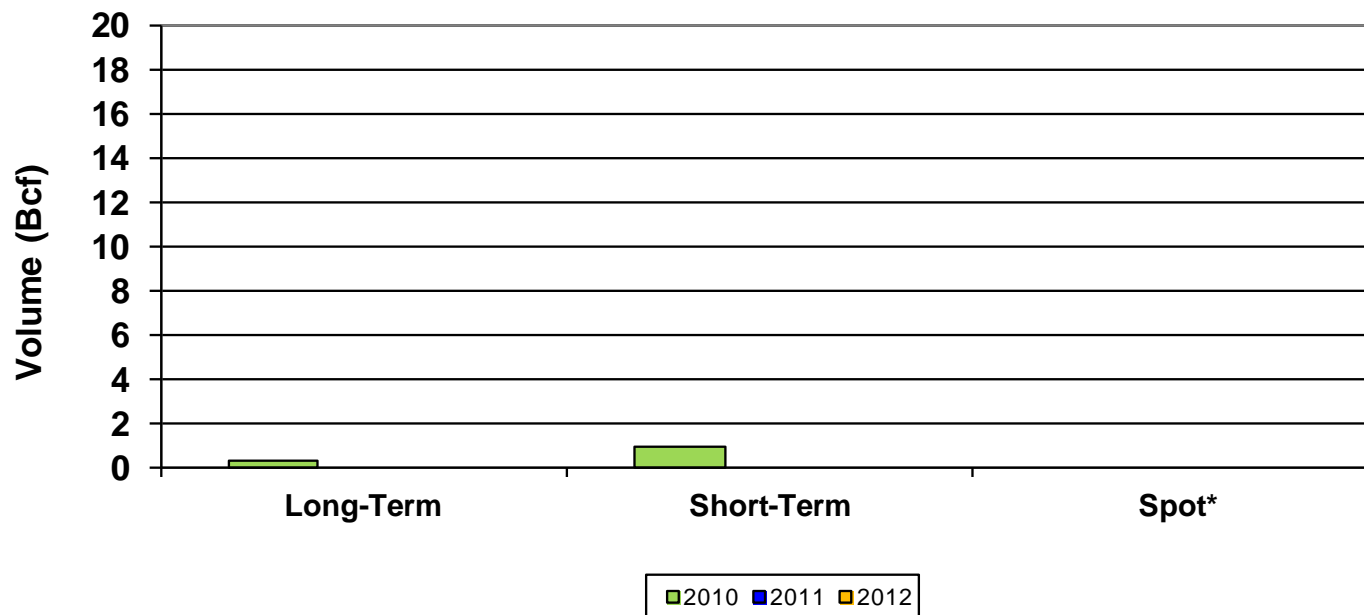
LNG Imports by Transaction Type - Cameron 2009-2012**



*Spot cargos are only identified for 2006 and later years. Prior to 2006, spot cargos could be included in either long-term or short-term types.

**2012 data is through November

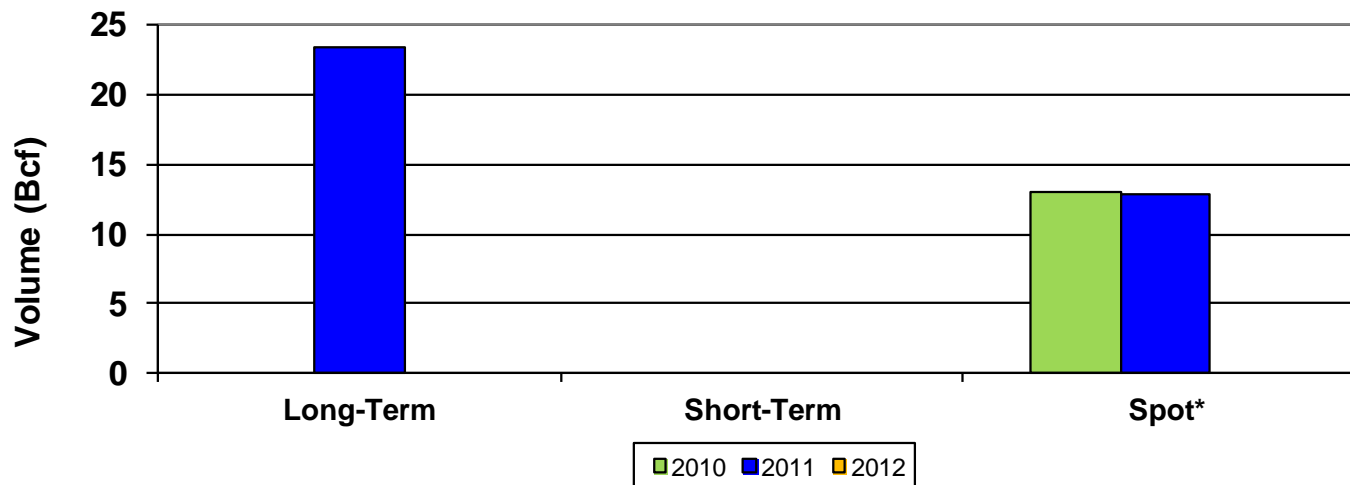
LNG Imports by Transaction Type - Neptune DWP 2010-2012**



*Spot cargos are only identified for 2006 and later years. Prior to 2006, spot cargos could be included in either long-term or short-term types.

**2012 data is through November

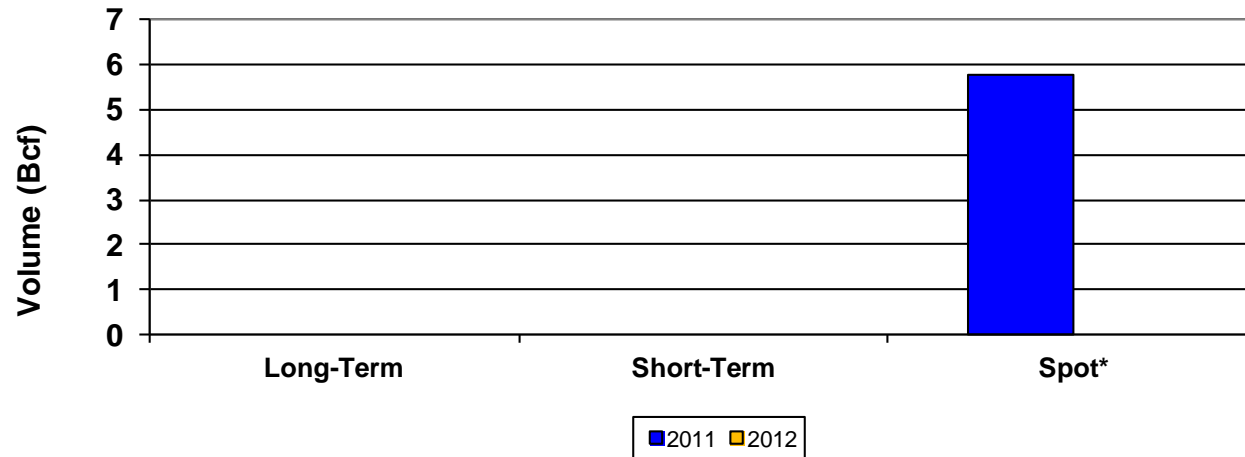
LNG Imports by Transaction Type - Golden Pass 2010-2012**



*Spot cargos are only identified for 2006 and later years. Prior to 2006, spot cargos could be included in either long-term or short-term types.

**2012 data is through November

LNG Imports by Transaction Type - Gulf LNG 2011-2012**



*Spot cargos are only identified for 2006 and later years. Prior to 2006, spot cargos could be included in either long-term or short-term types.

**2012 data is through November

LNG Imports by Country of Origin (Number of Cargos)

(1 of 6)

Terminal	Year	Algeria	Australia	Egypt	Eq. Guin.	Malaysia	Nigeria	Norway	Oman	Qatar	Trin. & Tob.	Yemen	Peru	Misc.	Ann. Tot.
Everett* MA	2004										67				67
	2005										63				63
	2006										65				65
	2007										66				66
	2008										64				64
	2009			4							57				61
	2010			2							52.6	9.9			64.5
	2011										38	15			53
	2012										29.3	5			34.3
Cove Point MD	2004	13					1				63				77
	2005	12		8							58				78
	2006	6		5							29				40
	2007	8		9			2				32				51
	2008			1				5			3.				9
	2009			2			1	10			12				20
	2010			2				9			4.				15
	2011						1	4							5
	2012										1				1

*Partially discharged cargos shown as fractional cargos in table.

LNG Imports by Country of Origin (Number of Cargos)

(2 of 6)

Terminal	Year	Algeria	Australia	Egypt	Eq. Guin.	Malaysia	Nigeria	Norway	Oman	Qatar	Trin. & Tob.	Yemen	Peru	Misc.	Ann. Tot.
Elba Island GA	2004										41				41
	2005			9			1				40				50
	2006			15							40				55
	2007			13	4						47				64
	2008			15			1				33				49
	2009			39							11				50
	2010			18							19				37
	2011			9						7	8				24
	2012			1						9	6				16
Lake Charles LA	2004	32	5			7	3		3	4	4			1.0	59
	2005	21		9		2	1		1	1	1				36
	2006			22			19				9				50
	2007	18		17	2		28			4	17				86
	2008			2			1								3
	2009			7			3				1				11
	2010			1			13								14
	2011										1				1
	2012										1				1

LNG Imports by Country of Origin (Number of Cargos)

(3 of 6)

Terminal	Year	Algeria	Australia	Egypt	Eq. Guin.	Malaysia	Nigeria	Norway	Oman	Qatar	Trin. & Tob.	Yemen	Peru	Misc.	Ann. Tot.
Gulf Gateway LA	2004														
	2005					1	1								2
	2006										1				1
	2007						2			2	3				7
	2008														–
	2009														–
	2010														–
	2011														–
	2012														–
Sabine Pass LA	2004														
	2005														
	2006														
	2007														
	2008						2			1					3
	2009			1			1			2	5				9
	2010									5		4	3		12
	2011								1		6	1	4		12
	2012								1			2			3

LNG Imports by Country of Origin (Number of Cargos)

(4 of 6)

Terminal	Year	Algeria	Australia	Egypt	Eq. Guin.	Malaysia	Nigeria	Norway	Oman	Qatar	Trin. & Tob.	Yemen	Peru	Misc.	Ann. Tot.	
Freeport TX	2004															
	2005															
	2006															
	2007															
	2008										2				2	
	2009			1							1					2
	2010						2						2			4
	2011			1							1	2	3			7
	2012										1					1
Northeast Gateway* MA	2004															
	2005															
	2006															
	2007															
	2008										1				1	
	2009			2.1												2.1
	2010			1.9						2	2					5.9
	2011															–
	2012															–

*Partially discharged cargos shown as fractional cargos in table.

LNG Imports by Country of Origin (Number of Cargos)

(5 of 6)

Terminal	Year	Algeria	Australia	Egypt	Eq. Guin.	Malaysia	Nigeria	Norway	Oman	Qatar	Trin. & Tob.	Yemen	Peru	Misc.	Ann. Tot.
Cameron LA	2004														
	2005														
	2006														
	2007														
	2008														
	2009									1	2				3
	2010									1	1				2
	2011			1							1		2		4
	2012										2				2
Neptune DWP*	2004														
	2005														
	2006														
	2007														
	2008														
	2009														
	2010										0.4	0.1			0.5
	2011														–
	2012														–

*Partially discharged cargos shown as fractional cargos in table.

LNG Imports by Country of Origin (Number of Cargos)

(6 of 6)

Terminal	Year	Algeria	Australia	Egypt	Eq. Guin.	Malaysia	Nigeria	Norway	Oman	Qatar	Trin. & Tob.	Yemen	Peru	Misc.	Ann. Tot.
Golden Pass TX	2004														
	2005														
	2006														
	2007														
	2008														
	2009														
	2010									3					3
	2011									8					8
	2012														–
Gulf LNG MS	2004														
	2005														
	2006														
	2007														
	2008														
	2009														
	2010														
	2011			1							1				2
	2012														–

*Partially discharged cargoes shown as fractional cargoes in table.

Average* LNG Import Landed Prices by Transaction Type

All CONUS Terminals (US\$ per MMBtu)

(1 of 2)

Type	Year	Jan	Feb	Mar	Apr	May	Jun	Jul	Aug	Sep	Oct	Nov	Dec	Totals
Long-Term	2004	5.55	6.10	4.52	5.13	5.19	6.10	5.52	5.78	4.69	5.51	6.32	6.74	5.64
	2005	6.26	5.95	5.74	6.23	6.00	6.00	6.18	5.90	8.84	11.78	12.01	9.58	7.26
	2006	11.32	8.31	7.41	6.61	6.56	5.51	5.65	6.21	6.25	4.59	6.54	7.13	6.62
	2007	5.69	6.72	7.04	6.59	7.03	6.86	6.22	5.60	4.98	5.71	6.55	6.23	6.30
	2008	7.74	8.01	8.14	8.57	9.95	11.34	11.92	9.48	7.72	7.21	6.06	6.55	8.65
Short-Term	2004	5.31	5.14	4.95	4.87	5.22	5.32	5.21	5.15	4.74	4.92	6.54	6.29	5.29
	2005	5.61	5.88	5.78	6.46	6.24	5.94	6.53	7.31	9.04	10.54	11.82	9.43	7.70
	2006	8.93	7.67	7.20	6.99	6.95	5.90	6.03	7.10	6.49	6.81	7.45	7.71	7.08
	2007	6.78	7.80	7.13	6.90	7.02	6.74	7.02	6.20	6.34	7.11	8.04	7.97	7.02
	2008	8.29	9.61	9.66	9.71	11.27	11.83	12.53	10.13	12.43	13.28	13.10	12.13	10.69
Spot**	2004	N/A	N/A	N/A	N/A	N/A	N/A	N/A	N/A	N/A	N/A	N/A	N/A	N/A
	2005	N/A	N/A	N/A	N/A	N/A	N/A	N/A	N/A	N/A	N/A	N/A	N/A	N/A
	2006	7.99	7.80		6.85	5.63	5.69	5.65		6.76			8.37	6.95
	2007	5.80		7.70	7.25	7.25	8.16	6.60	6.26					6.92
	2008				12.54	12.86								12.75

*Mean transaction price; not volume-weighted

**Spot cargos are only identified for 2006 and later years. Prior to 2006, spot cargos could be included in either long-term or short-term types.

Average* LNG Import Landed Prices by Transaction Type

All CONUS Terminals (US\$ per MMBtu)

(2 of 2)

Type	Year	Jan	Feb	Mar	Apr	May	Jun	Jul	Aug	Sep	Oct	Nov	Dec	Totals
Long-Term	2009	6.52	5.13	4.10	3.52	3.30	3.52	3.64	3.18	2.93	3.49	4.08	4.36	3.89
	2010	5.43	5.26	4.52	4.08	3.84	3.79	4.37	4.79	3.57	3.54	3.29	4.02	4.17
	2011	4.58	4.54	4.27	4.10	4.04	4.39	4.00	4.23	3.91	5.64	3.58	4.64	4.31
	2012	3.94	3.06	2.40	2.66	2.61	2.95	3.07	3.05	3.26	3.09	3.74		3.05
Short-Term	2009	10.32	7.89	8.16	5.23	4.36	3.80	4.82	4.28	3.44	3.82	3.80	3.84	5.36
	2010	5.17	4.76	4.75	4.00	5.12	5.19		4.86	5.14	4.21	4.92	5.70	4.83
	2011	4.38	4.47	5.80	6.20		5.48	5.58	5.60	5.77	6.55	4.86	4.59	5.24
	2012	4.68	4.59	4.61	3.37	1.78		2.51	2.75	2.37	2.76	6.99		4.08
Spot	2009	8.35		8.35	4.98	8.35	4.15	3.79	4.46	4.19	6.31	3.58	5.16	5.17
	2010	5.38	5.84	4.95	4.09	4.47		5.31		6.35	6.70	6.87	7.33	5.71
	2011	6.09	6.65	5.99	6.65	4.50	12.37	6.94	7.41	3.96	6.62	3.51	5.76	6.33
	2012	3.18	9.28	2.50		13.15		13.50	8.57			12.41		7.08

*Mean transaction price; not volume-weighted

Average* LNG Import Landed Prices (US\$ per MMBtu)

(1 of 6)

Terminal	Year	Jan	Feb	Mar	Apr	May	Jun	Jul	Aug	Sep	Oct	Nov	Dec	Annual Average
Everett MA	2004	4.67	5.11	4.33	4.54	4.76	4.90	5.09	5.15	4.44	4.72	5.42	5.44	4.91
	2005	5.60	5.68	5.43	5.45	5.60	5.68	5.80	5.30	6.67	8.29	8.68	7.56	6.25
	2006	8.75	8.12	7.64	6.93	7.29	5.81	6.23	6.63	6.05	6.83	7.40	7.43	7.19
	2007	7.10	7.53	7.27	6.47	7.18	6.62	6.89	6.11	6.01	7.01	7.70	7.59	6.91
	2008	8.64	9.32	9.09	9.15	9.29	11.34	11.49	10.93	9.37	10.25	8.84	10.44	9.79
	2009	8.49	7.95	8.02	5.44	4.94	3.94	4.47	4.39	3.86	4.11	3.96	4.31	5.51
	2010	5.10	5.63	4.35	4.83	4.24	4.32	4.41	4.78	4.37	3.93	3.79	4.21	4.50
	2011	4.71	4.67	4.23	4.63	3.83	4.92	4.33	4.53	4.60	4.10	4.34	4.06	4.44
	2012	4.24	3.83	3.41	3.74	3.03	3.35	3.26	3.11	3.48	3.09	3.74		3.55
Cove Point MD	2004	6.07	5.61	4.98	5.21	5.56	6.20	5.85	5.69	5.00	5.20	7.23	7.21	5.85
	2005	6.21	5.98	6.06	6.86	6.51	6.07	6.70	7.22	9.90	12.62	12.68	10.88	8.15
	2006	10.51	7.91	6.81	6.79	6.65	6.06	5.81	6.87	6.62	3.94	8.15	7.74	7.10
	2007	5.41	8.24	7.40	7.54	7.57		6.84	6.04	5.53	6.54	7.27		6.87
	2008	7.20	8.00	9.18		11.28			8.80				6.89	8.50
	2009	6.14	4.48	4.06	3.59	3.28	3.48	3.90		2.67	3.54	4.23	4.36	3.80
	2010	5.93	5.27	4.79	3.84						3.84			5.01
	2011	4.22	4.32						8.39		3.76			5.00
	2012					13.15								13.15

*Mean transaction price; not volume-weighted

Average* LNG Import Landed Prices (US\$ per MMBtu)

(2 of 6)

Terminal	Year	Jan	Feb	Mar	Apr	May	Jun	Jul	Aug	Sep	Oct	Nov	Dec	Annual Average
Elba Island GA	2004	6.11	5.73	5.11	5.35	5.88	6.91	6.11	6.01	5.06	5.75	7.58	7.73	6.16
	2005	5.95	6.07	5.99	7.40	6.85	6.42	7.08	8.28	10.59	12.85	12.60	10.86	8.75
	2006	11.11	7.83	6.78	6.84	6.63	5.61	5.57	6.71	6.55	4.27	6.79	7.67	6.73
	2007	5.52	6.80	7.19	7.18	7.12	7.24	6.35	5.73	5.08	6.08	6.95	6.89	6.46
	2008	6.86	7.68	8.61	9.31	11.01	11.65	12.84	9.04	8.13	7.21	6.21	6.62	9.24
	2009	5.87	4.21	3.37	3.37	3.40	3.28	3.69	3.12	2.58	3.47	4.03	4.22	3.58
	2010	5.55	5.01	4.55	3.58	4.01	3.89	4.46	4.51	3.39	3.58	3.03	4.01	4.19
	2011	3.95	4.05	3.53	3.98	4.40	4.06	4.22	4.47	3.84	3.92	3.41	3.35	3.89
	2012	3.18	2.42	2.42	1.93	1.78	2.17	2.51	2.75	2.37	2.76	3.21		2.49
Lake Charles LA	2004	4.97	5.55	5.40	4.71	5.11	5.31	4.91	4.69	4.45	4.86		6.43	5.10
	2005	5.78	6.15		6.56	6.12	5.71	6.29	7.06	9.39	12.33	13.11	11.37	8.39
	2006	10.76	7.80		6.65	6.50	5.40	5.63	6.19	6.25	3.69	6.58	6.99	6.21
	2007	5.29	6.35	6.79	6.50	6.64	6.76	6.21	5.39	4.96	5.99			6.38
	2008									7.82		5.93		7.19
	2009			3.16	3.10	2.86	3.04	3.31	2.91	3.12	3.26	3.80		3.14
	2010			4.32	3.51	3.85	3.48	3.95			3.21			3.67
	2011				3.98									3.98
	2012			2.00										2.00

*Mean transaction price; not volume-weighted

Average* LNG Import Landed Prices (US\$ per MMBtu)

(3 of 6)

Terminal	Year	Jan	Feb	Mar	Apr	May	Jun	Jul	Aug	Sep	Oct	Nov	Dec	Annual Average
Gulf Gateway	2004													
	2005			6.08					10.01					8.05
	2006								6.96					6.96
	2007			8.95		7.32	8.16	6.96	8.13					7.80
	2008													
	2009													
	2010													
	2011													
	2012													
Sabine Pass LA	2004													
	2005													
	2006													
	2007													
	2008				7.60		12.04							10.56
	2009			4.25	3.19		4.16		3.95	3.76		3.78	4.13	3.90
	2010	5.39	4.77	4.23	3.87			4.14			6.25	4.50	6.08	4.87
	2011	5.11		5.69	3.67				6.50	3.30	10.53		10.01	6.93
	2012		2.16						13.50				12.41	

*Mean transaction price; not volume-weighted

Average* LNG Import Landed Prices (US\$ per MMBtu)

(4 of 6)

Terminal	Year	Jan	Feb	Mar	Apr	May	Jun	Jul	Aug	Sep	Oct	Nov	Dec	Annual Average	
Freeport TX	2004														
	2005														
	2006														
	2007														
	2008				12.54	13.78									13.16
	2009						4.54		4.08						4.31
	2010							5.40		6.35	7.15				6.31
	2011	6.35	6.65		7.30				9.32	9.90		11.76		10.09	8.77
	2012									8.57					8.57
Northeast Gateway	2004														
	2005														
	2006														
	2007														
	2008					11.93									11.93
	2009	8.35		8.35	8.35	8.35						3.58	4.87		6.98
	2010	4.68	5.51	5.88											5.18
	2011														
	2012														

*Mean transaction price; not volume-weighted

Average* LNG Import Landed Prices (US\$ per MMBtu)

(5 of 6)

Terminal	Year	Jan	Feb	Mar	Apr	May	Jun	Jul	Aug	Sep	Oct	Nov	Dec	Annual Average
Cameron LA	2004													
	2005													
	2006													
	2007													
	2008													
	2009						4.72	4.77				4.01		4.50
	2010	5.31						5.22						5.27
	2011	8.73		6.95	6.95				8.03					7.67
	2012		9.28									10.76		10.02
Neptune DWP	2004													
	2005													
	2006													
	2007													
	2008													
	2009													
	2010			6.13					5.91					6.02
	2011													
	2012													

*Mean transaction price; not volume-weighted

Average* LNG Import Landed Prices (US\$ per MMBtu)

(6 of 6)

Terminal	Year	Jan	Feb	Mar	Apr	May	Jun	Jul	Aug	Sep	Oct	Nov	Dec	Annual Average
Golden Pass TX	2004													
	2005													
	2006													
	2007													
	2008													
	2009													
	2010											6.87	7.33	7.02
	2011	5.13		5.99	5.99	4.23	4.25							4.79
	2012													
	Gulf LNG MS	2004												
2005														
2006														
2007														
2008														
2009														
2010														
2011								12.37						12.37
2012														

*Mean transaction price; not volume-weighted