

Alternatives Analyzed

Produce plutonium pits at required quantities to meet national security requirements (50 U.S.C. 2538a)

No-Action Alternative

LANL

- Upgrade, modernize, and extend the life of PF-4
- Construct new support facilities and upgrade existing facilities
- Implement TRU waste staging areas
- Produce 30 ppy with surge efforts to 80 ppy
- All analyzed in 2026 LANL SWEIS and included in ROD

SRS

- Implement approved construction activities from 2020 ROD

Multi-Site Alternative (preferred alternative) LANL and SRS could operate concurrently

LANL

- Same as the No-Action Alternative

SRS

- Operate SRPPF to produce a minimum of 50 ppy and a maximum of 125 ppy

Single Site Alternative

Analyzed in the event multi-site pit production is no longer needed/desired within the next 50 years

LANL (as single site)

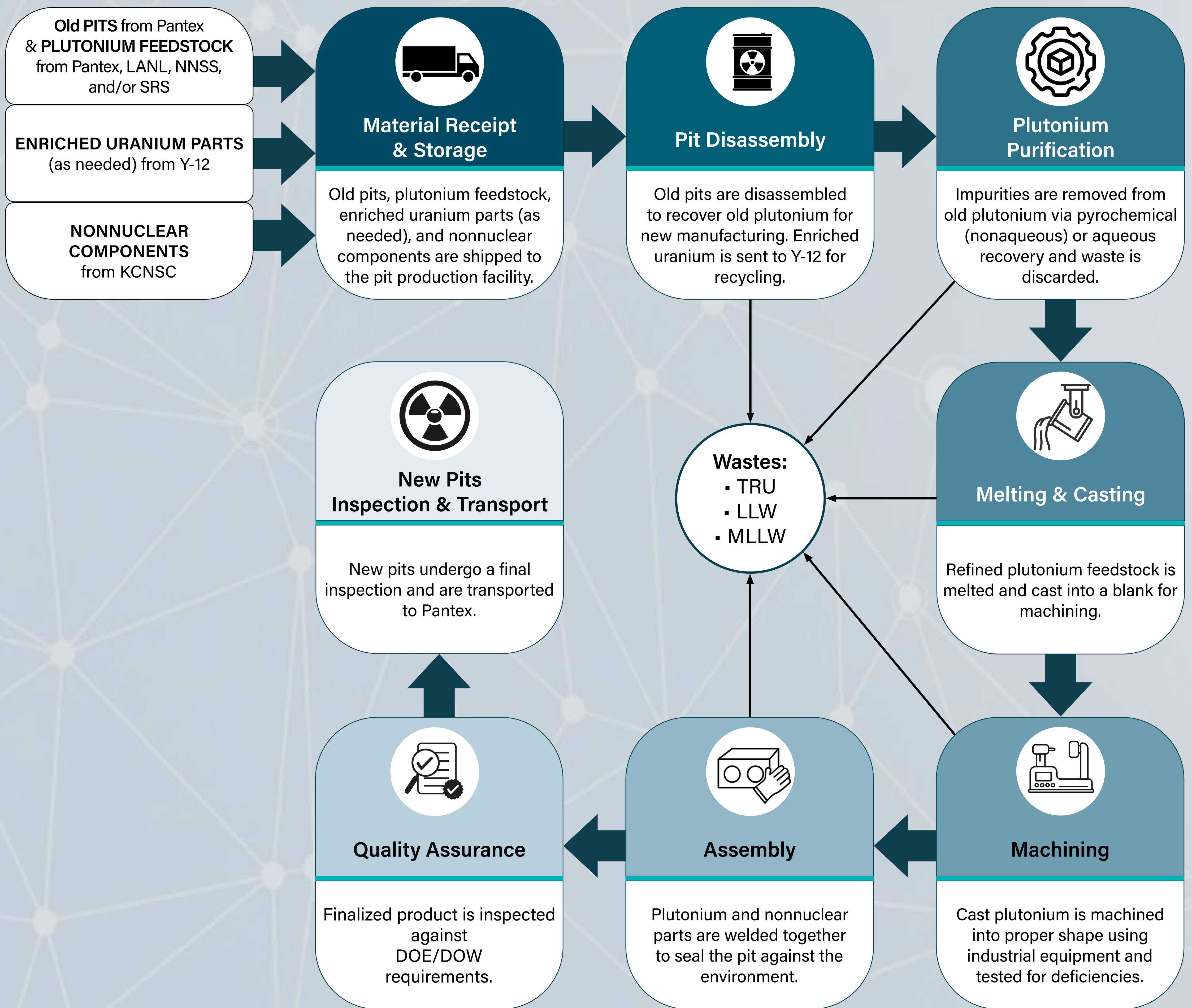
- Same as the No-Action Alternative
- No production at SRS

SRS (as single site)

- Same as Multi-Site Alternative
- LANL would be maintained in standby mode and would produce minimal pits to maintain competencies

Acronyms: LANL = Los Alamos National Laboratory; PF-4 = Plutonium Facility 4; ppy = pits per year; ROD = Record of Decision; SRPPF = Savannah River Plutonium Processing Facility; SRS = Savannah River Site; SWEIS = Site-Wide Environmental Impact Statement; TRU = Transuranic; U.S.C. = United States Code

Pit Production Process



Acronyms: DOE = Department of Energy; DOW = Department of War; KCNSC = Kansas City National Security Campus; LANL = Los Alamos National Laboratory; LLW = Low Level Waste; MLLW = Mixed Low Level Waste; NNSS = Nevada National Security Site; SRS = Savannah River Site; TRU = Transuranic

Scoping Comment Topics

Purpose and Need

- General objection
- Need for pits

Resource Comments

Air Quality | Biological Resources | Cultural Resources
Geological Resources | Human Health and Safety
Infrastructure | Land Use | Socioeconomics | Traffic &
Transportation

NEPA Process

- Public involvement
- NHPA Section 106 tribal consultation
- Virtual hearings

Pit Production and Safety

- Feasibility and facility readiness
- Worker safety, radiological risk, DNFSB concerns
- National transportation
- Local community impacts
- Climate change

Policies

- Treaty compliance
- Arms race
- Validity of deterrence
- National/global risks

Waste Management

- Projected waste volumes
- WIPP capacity

General Opposition or Support

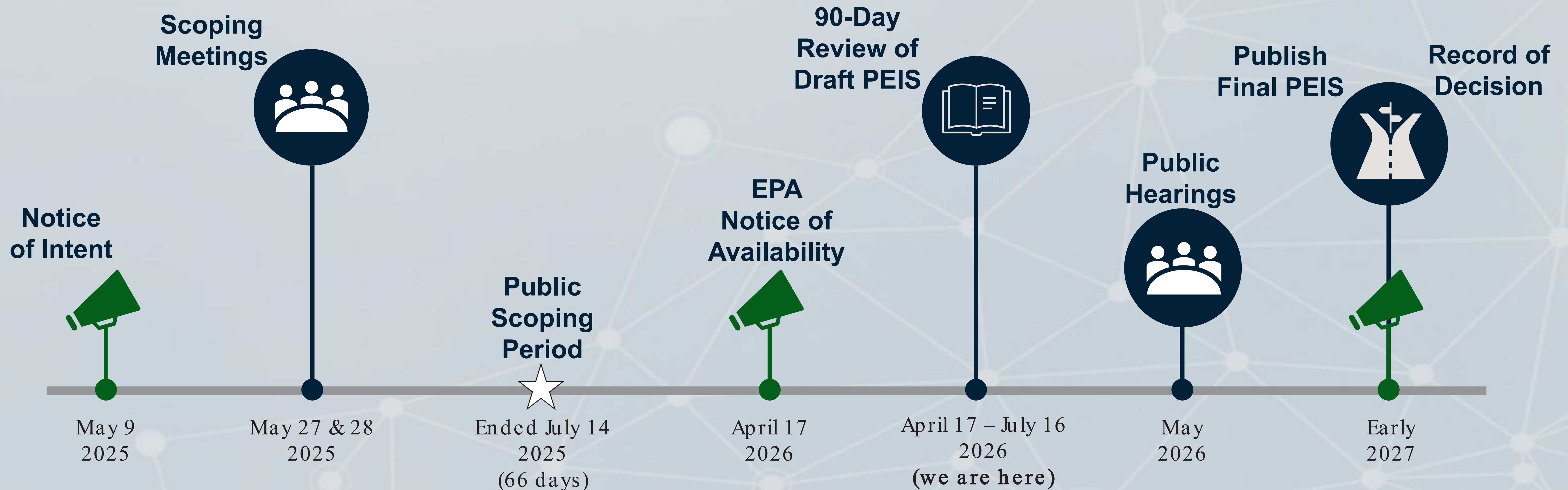
All comments are summarized and addressed in Appendix B

Summary of Key Impacts

Parameter	LANL	SRS
Land use and development	Permanent development: 70 acres Temporary laydown areas: 29 acres Previously undisturbed: 27 acres	Permanent development: 65 acres Temporary laydown areas: 42 acres Previously undisturbed: 9.3 acres
Air emissions	Non-rad emissions: below de minimis Rad: << 1-percent of annual site releases	Non-rad emissions: below de minimis Rad: << 1-percent of annual site releases
Socioeconomic	Construction workforce: 250–300 Additional operations staff: 86–2,083	Construction workforce: 4,000 peak Additional operations staff: 1,705–2,840
Transportation	Annual LCF risk to public: 0.0015–0.0038 Accident risk to public: 5.9×10^{-6} – 1.6×10^{-5} LCF	Annual LCF risk to public: 0.0050–0.0099 Accident risk to public: 1.3×10^{-5} – 3.3×10^{-5} LCF
Radioactive waste	LLW (m ³ /yr): 3,029–7,627 MLLW (m ³ /yr): 102–262 TRU waste (m ³ /yr): 280–634	LLW (m ³ /yr): 4,650–9,400 MLLW (m ³ /yr): 7.6–15 TRU waste (m ³ /yr): 459–765
Human health	MEI and collective population dose: very small Number of radiological workers: 1,028–2,003 Collective worker dose: up to 931 person-rem/yr	MEI and collective population dose: very small Number of radiological workers: 1,280–2,130 Collective worker dose: up to 356 person-rem/yr
Accidents	Bounding accident: glovebox fire MEI LCF risk: 1.2×10^{-6} Population LCF risk: 1.1×10^{-4}	Bounding accident: fire in receipt area MEI LCF risk: 5.5×10^{-6} Population LCF risk: 2.8×10^{-2}

Acronyms: LCF = Latent Cancer Fatality; LLW = Low Level Waste; MEI = Maximally Exposed Individual; MLLW = Mixed Low Level Waste; TRU = Transuranic

NNSA Milestones and Commitments



- Settlement Agreement: Filed January 16, 2025
- Scoping period: 45 days after last scoping meeting (ended July 14, 2025)
- Draft PEIS Comment Period: 90 days (twice the statutory minimum of 45 days)
- In-person hearings for Draft PEIS in:
 - North Augusta, SC (hybrid); Kansas City, MO; Livermore, CA; Santa Fe, NM (hybrid); Washington, DC
- Until a ROD is published (within 2 ½ years of the Settlement Agreement), NNSA cannot:
 1. Introduce nuclear materials into SRPPF;
 2. Install classified equipment into the Main Process Building;
 3. Start field construction of the Waste Storage RCRA Waste/DOT Inspection Station; nor
 4. Start constructing the Waste Characterization Lab in the former Waste Solidification Building.