



**U.S. DEPARTMENT *of* ENERGY**

---

**Office of Environmental Management**

**Update on EM Small Sites**

# Update on the EM Small Sites

---

**Jack Zimmerman**

Acting Associate Principal Deputy Assistant Secretary  
for Regulatory and Policy Affairs

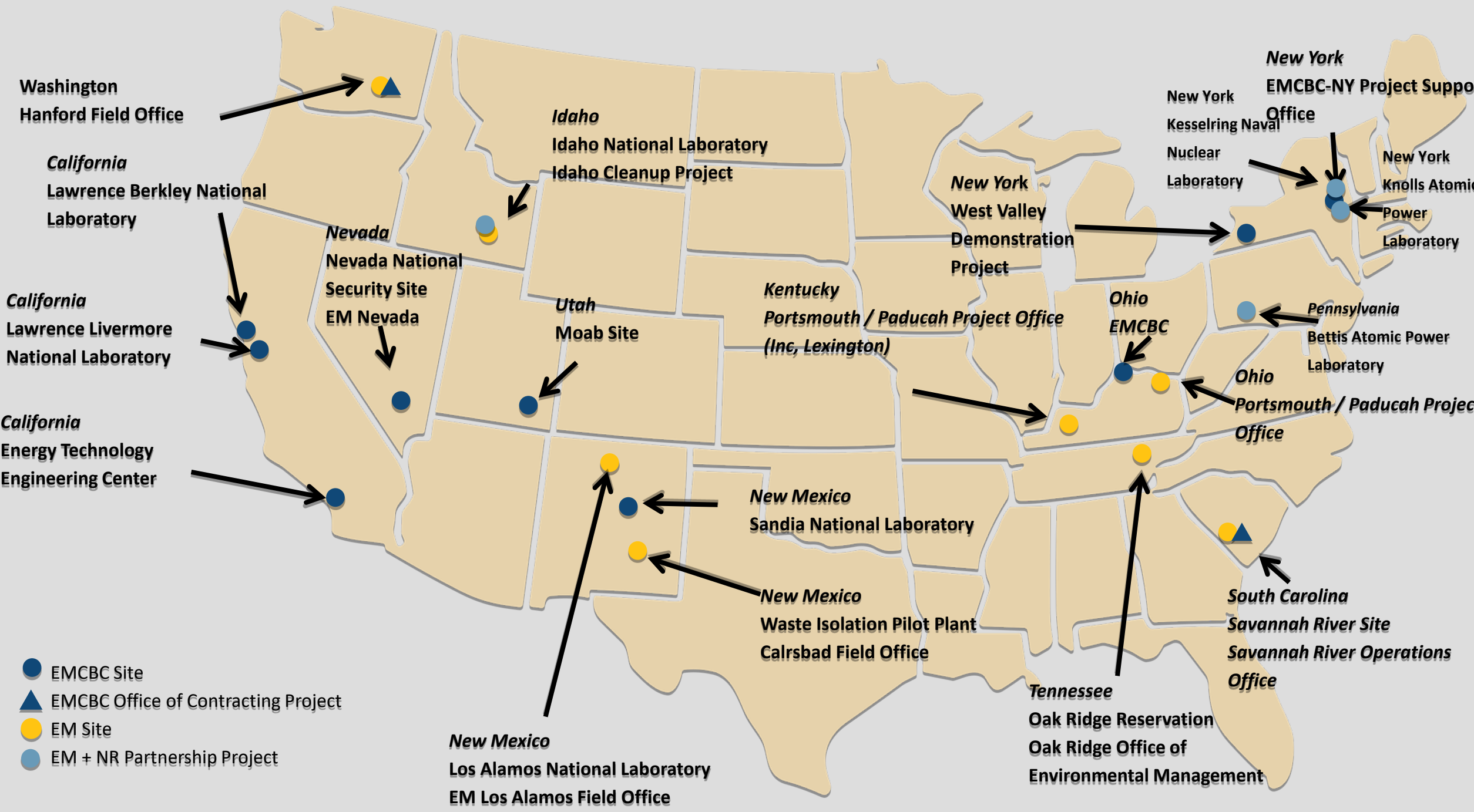
---

April 30, 2026



U.S. DEPARTMENT  
of **ENERGY**

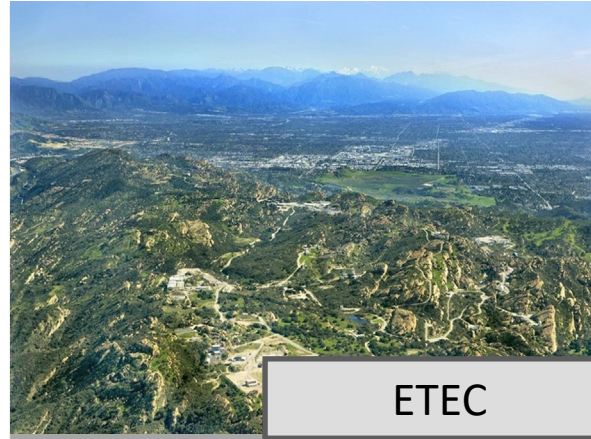
Office of Environmental  
Management



# Update On The EM Small Sites



Moab



ETEC



Sandia



LBLN



LLNL



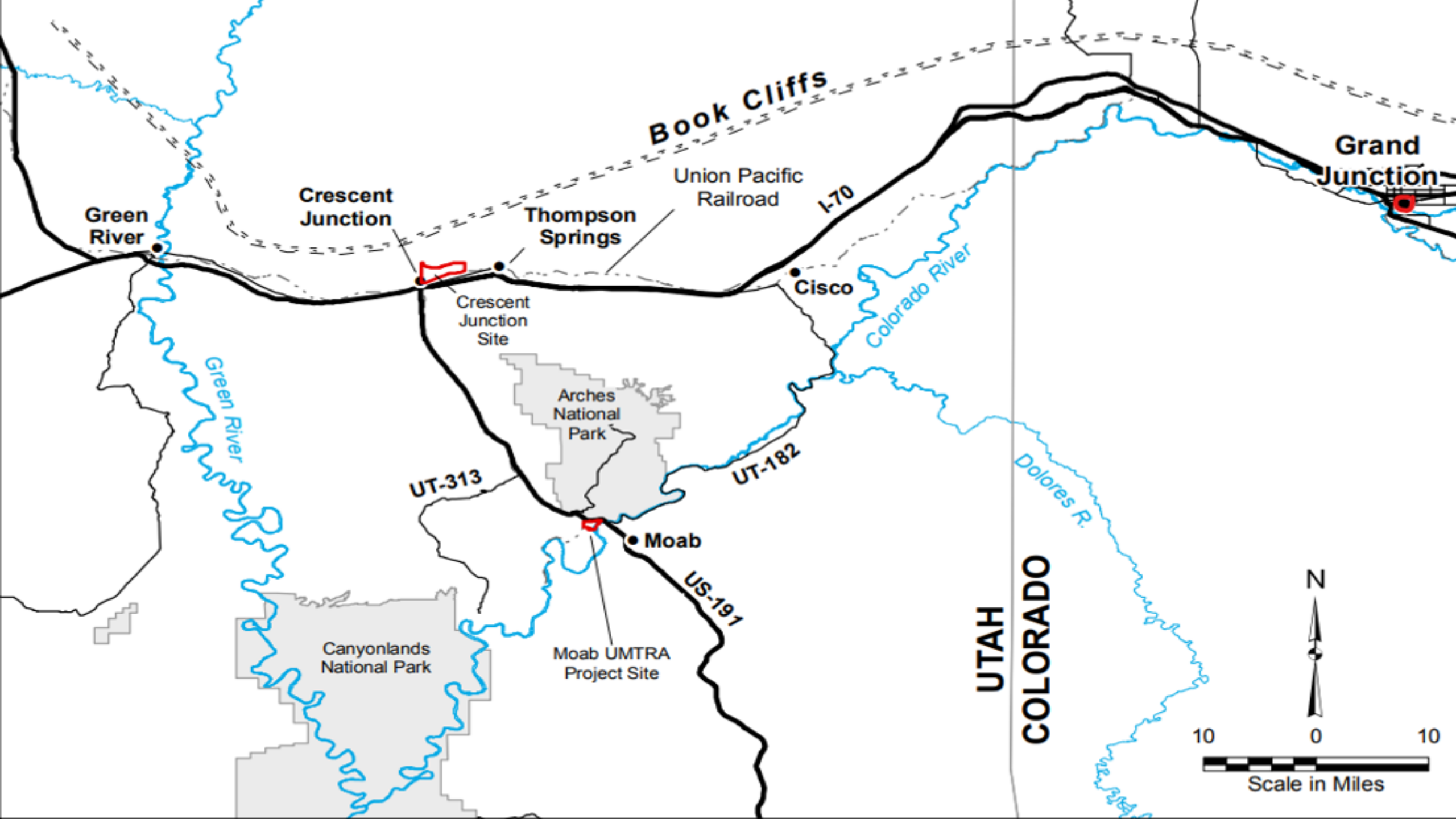
EMCBC-NY





Moab

Uranium Mill Tailings Remedial Action  
(UMTRA) Project



# Scope (Moab & Crescent Junction)

## Scope

- Relocate uranium mill tailings and other contaminated materials from Moab site to Crescent Junction site for permanent disposal
  - ✓ 16M ton Milestone
  - ✓ Tailing Pile Removed
- Actively remediate groundwater at the Moab site
- Remediate properties in vicinity of Moab that exceed U.S. EPA standards for radium-226 in soil



Rail Load  
Out Area

Tailings Pile

Former Mill

Well Field

Colorado



# Next Phase of Cleanup

- Removal of remaining contaminated materials
- Groundwater compliance action plan
- Infrastructure disposition
- Final status survey
- Closure & transfer



# Next Phase of Cleanup

- Contaminated material disposal
- Construct final cover
- Regulatory reporting
- Transfer to DOE Office of Legacy Management

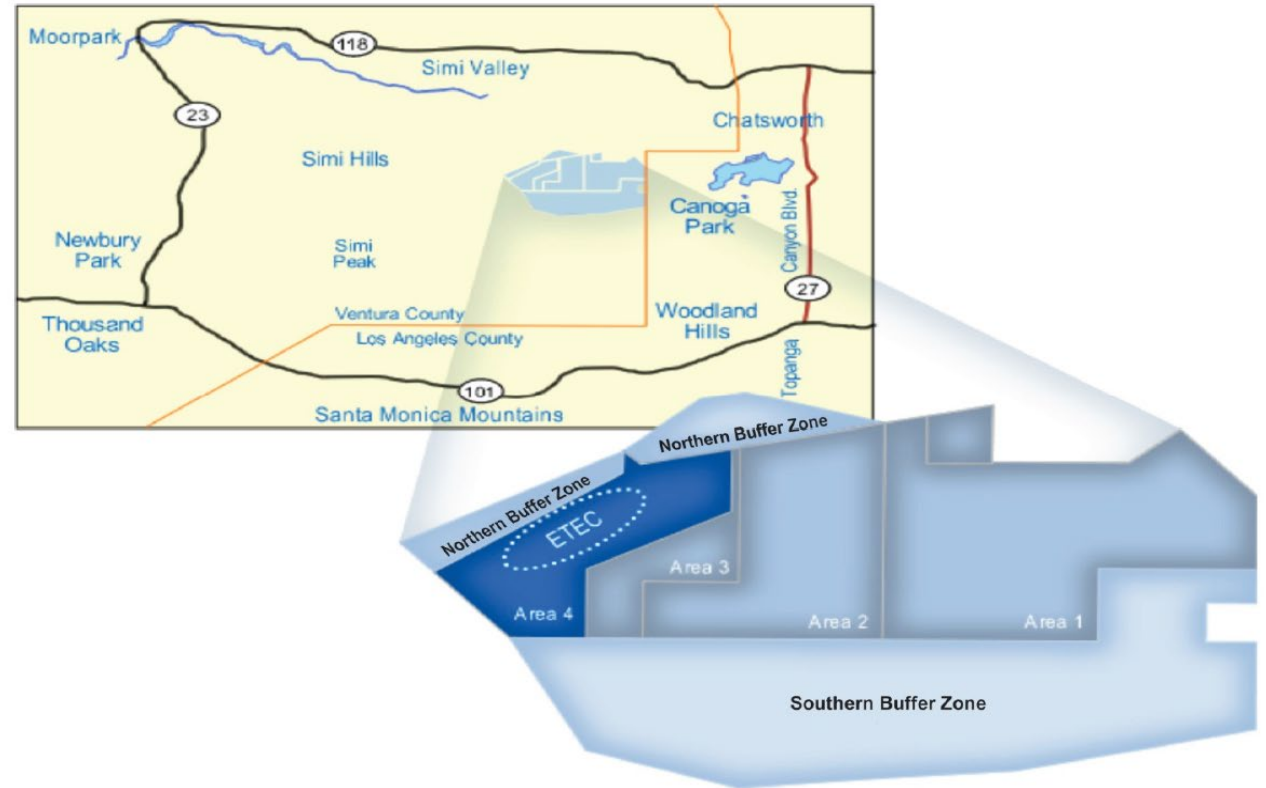


# Energy Technology Engineering Center



# ETEC Overview

- Santa Susana Field Laboratory (SSFL) is a 2,850-acre site near Los Angeles
- Cleanup responsibilities at SSFL shared between DOE, Boeing and NASA
- California Department of Toxic Substances Control (DTSC) is the lead regulator
- DOE's site = Area 4, The Energy Technology Engineering Center (ETEC)



# Scope & Mission

## Scope

- Buildings, Groundwater, and Soil

## Mission

- Ensure the land that held the former ETEC in Area IV at SSFL is cleaned up so that it is safe for future use

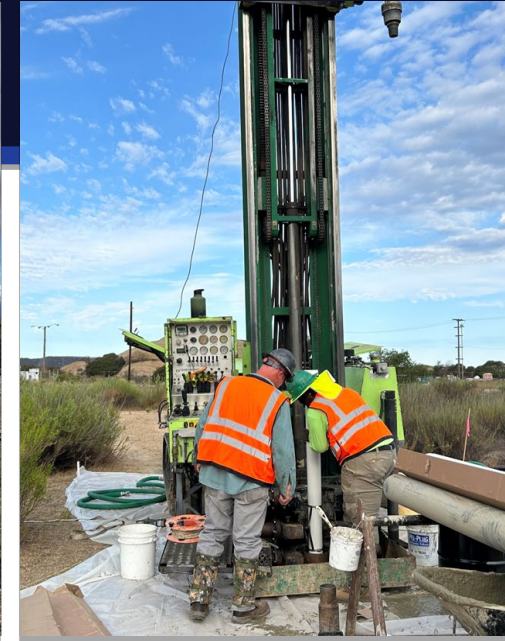
## Vision

- Achieve a safe cleanup that minimizes impacts to the site cultural or biological resources



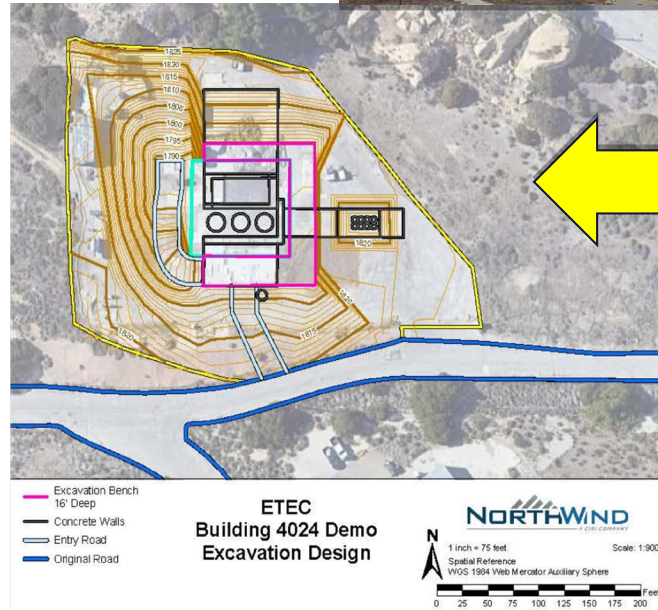
# Groundwater Status

- In-situ pilot study at the Hazardous Materials Storage Area
- Automated solar-powered pumping at the Former Sodium Disposal Facility
- Ongoing groundwater monitoring across Area IV tracks trends and informs cleanup decisions



# Buildings Status

- Completed remediation and demolition of the final above-ground buildings in 2021



- Work plan for demolition of the SNAP Environmental Test Facility (Building 4024) basement under review
- Two additional vaults and a few slabs remaining to be demolished

# Soils Status

Cleanup to background per 2010 Administrative Order on Consent

- Gain resolution to the known challenges with soil standard
- Finalize soils plans using a science-based cleanup approach
- Complete NEPA and publish a Soils ROD



# Stakeholder Engagement

## New CONNECT Series

*Community Outreach, Neighbor Notifications, Engagement, Collaboration, and Training*

### Builds on current outreach

- Groundwater U with DTSC, NASA & Boeing
- Site tours with local elected officials
- Tribal Sacred Sites Council
- *CleanUpdate* Newsletters
- Public meetings



San Francisco

Marin County

# Lawrence Berkeley National Laboratory

UC Berkeley

Advanced  
Light Source

Lawrence  
Berkeley  
National



# LBNL Overview

- **Location:** Alameda County, close to the city of Berkeley, CA
- **Scope:** Cleanup on the Office of Science-owned contaminated excess facilities at Lawrence Berkeley National Laboratory (LBNL)

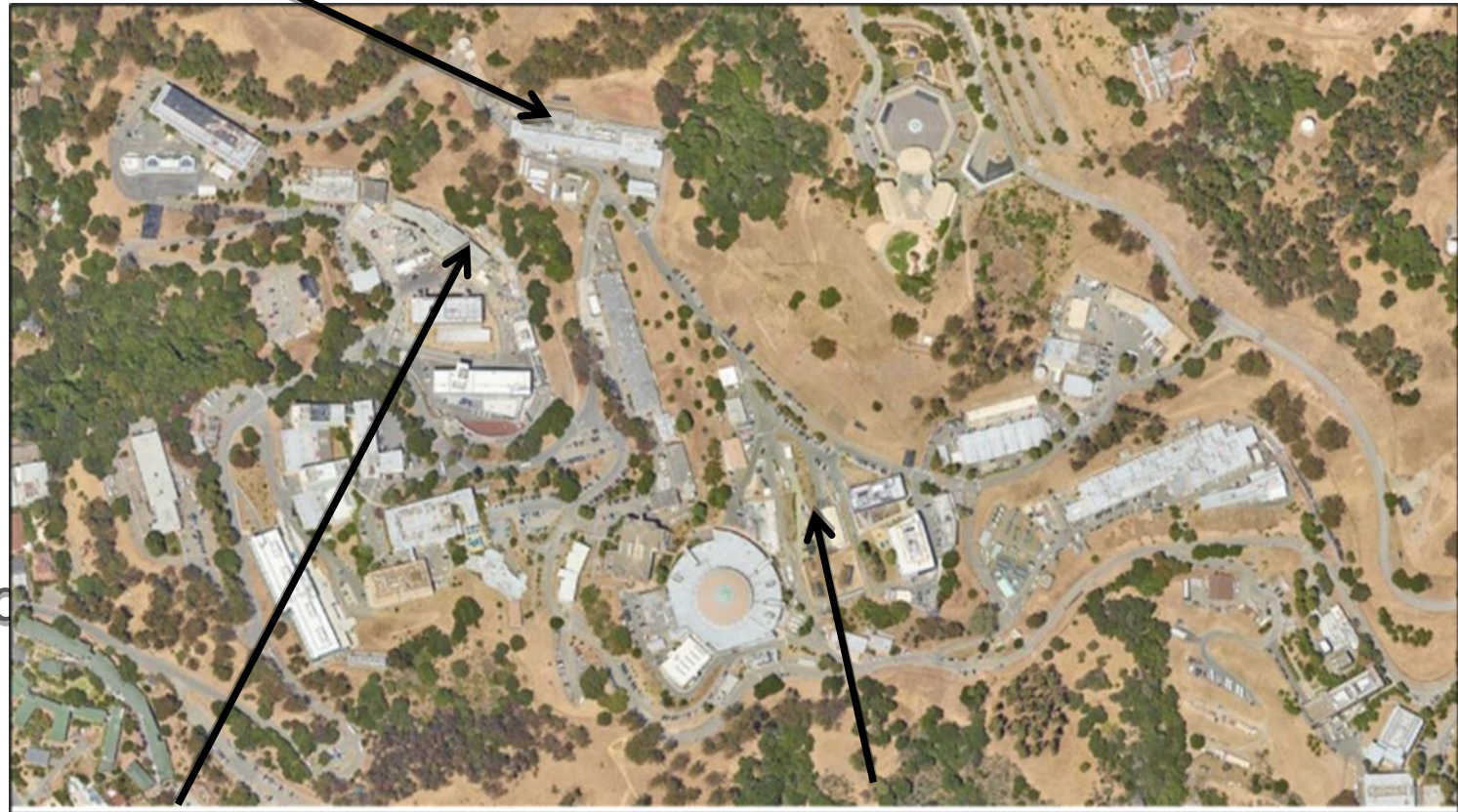


Old Town Cleanup Progress: May 2014, Feb 2020, and May 2023

# Mission

- **Mission:** Continue to improve health and safety by cleaning up existing contamination and improving seismic standards of buildings at LBNL
- **Next:** Continue Bayview area and B71 Area demolition

**Building 71 Complex**



**Bayview**

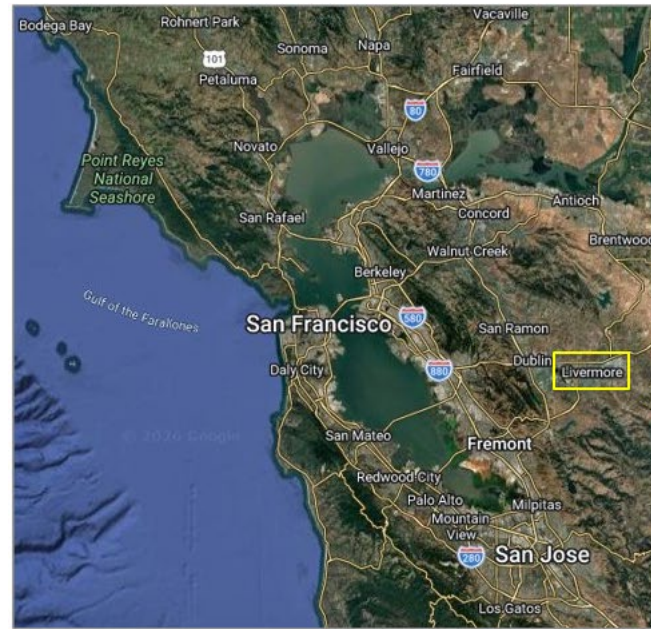
**Old Town**



# Lawrence Livermore National Laboratory

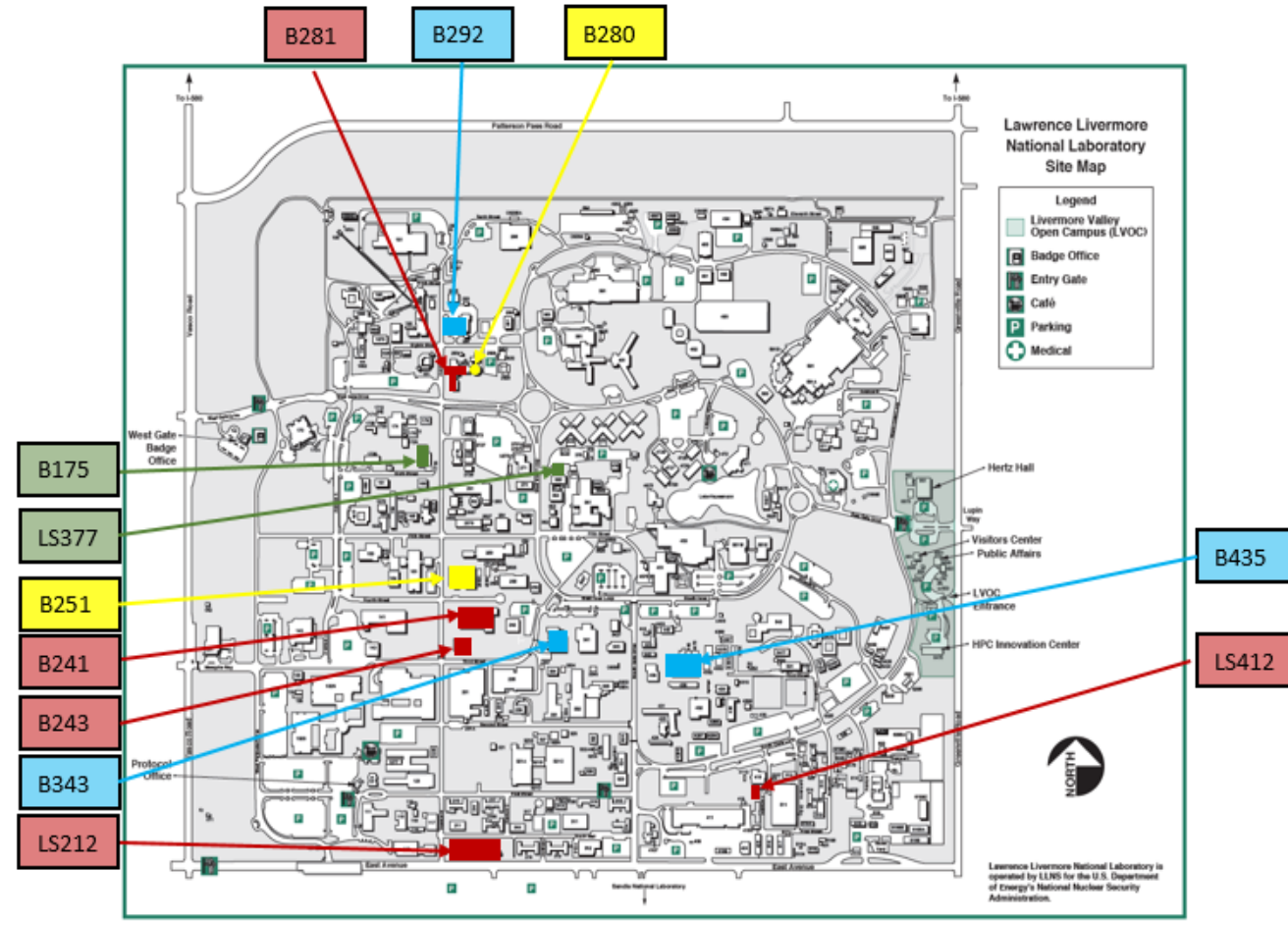
# LLNL Overview

- **Location:** Livermore, CA
- **Scope:** Excess Facility D&D
  - Decommission and demolish high-risk excess facilities.
  - Characterization and implementation of final groundwater contamination remedies.



# Mission

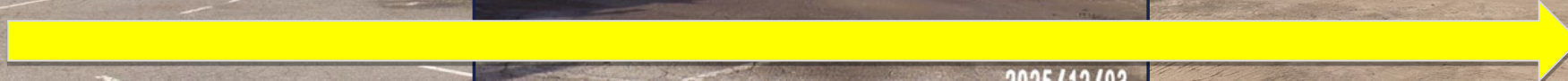
- **Mission:** Perform prioritized excess facility D&D and return sites to NNSA for future mission use.
- **Vision:** Cleanup as many excess facilities as we can given available funding.



# LLNL Accomplishments – LS412 Demolition



# Building 280



2025/12/02

# Building 281



# LLNL Accomplishments – Next in the Queue



**B212/LS212**



**B243/B241**

# EMCBC-NY



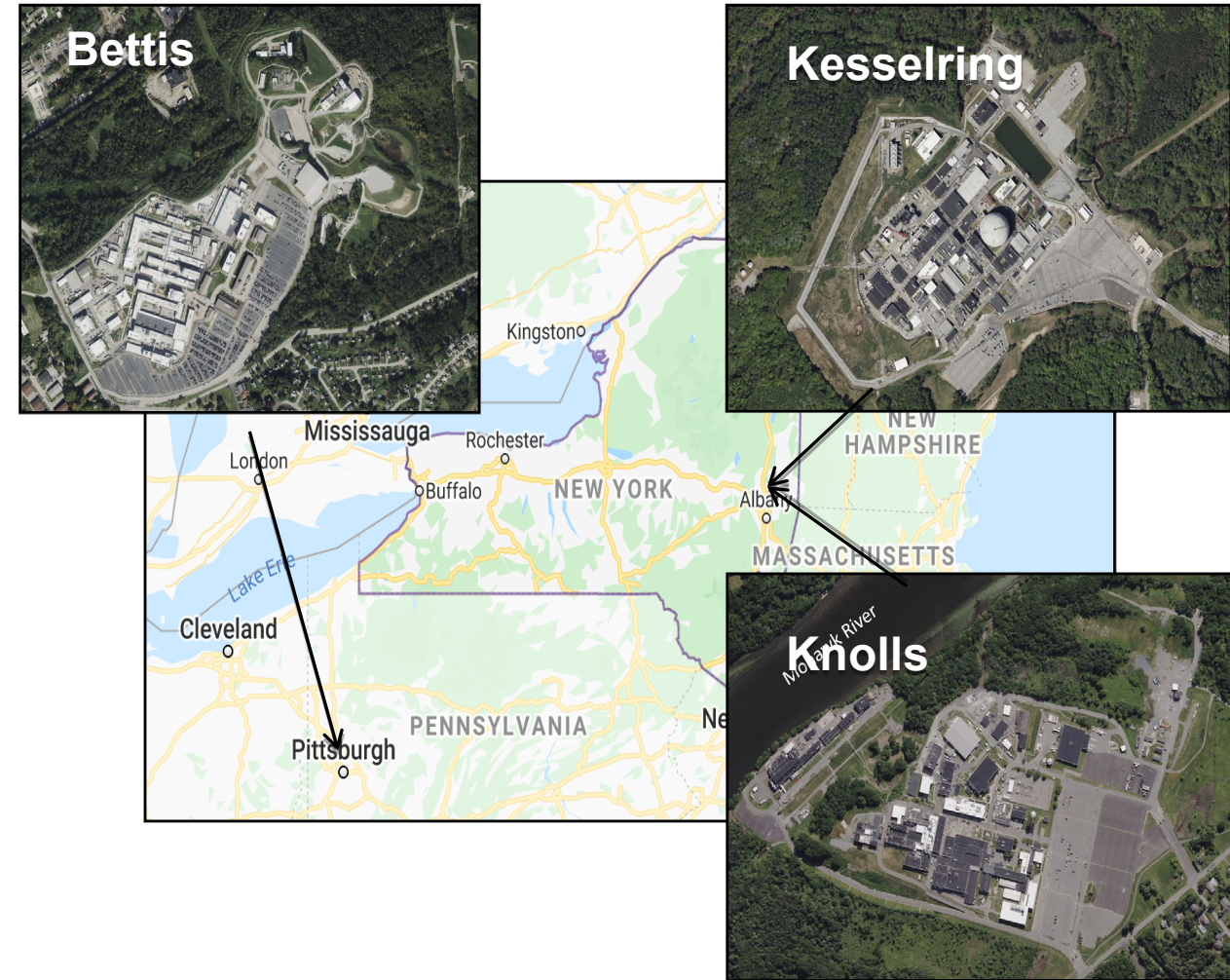
# EM+NR Partnership

- DOE-EM and the Office of Naval Reactors (NR) have partnered to accomplish Deactivation and Decommissioning at Naval Nuclear Laboratory sites.
- The partnership:
  - uses EM to define the scope and cost of environmental liabilities,
  - and to effectively accomplish D&D at NNL sites.

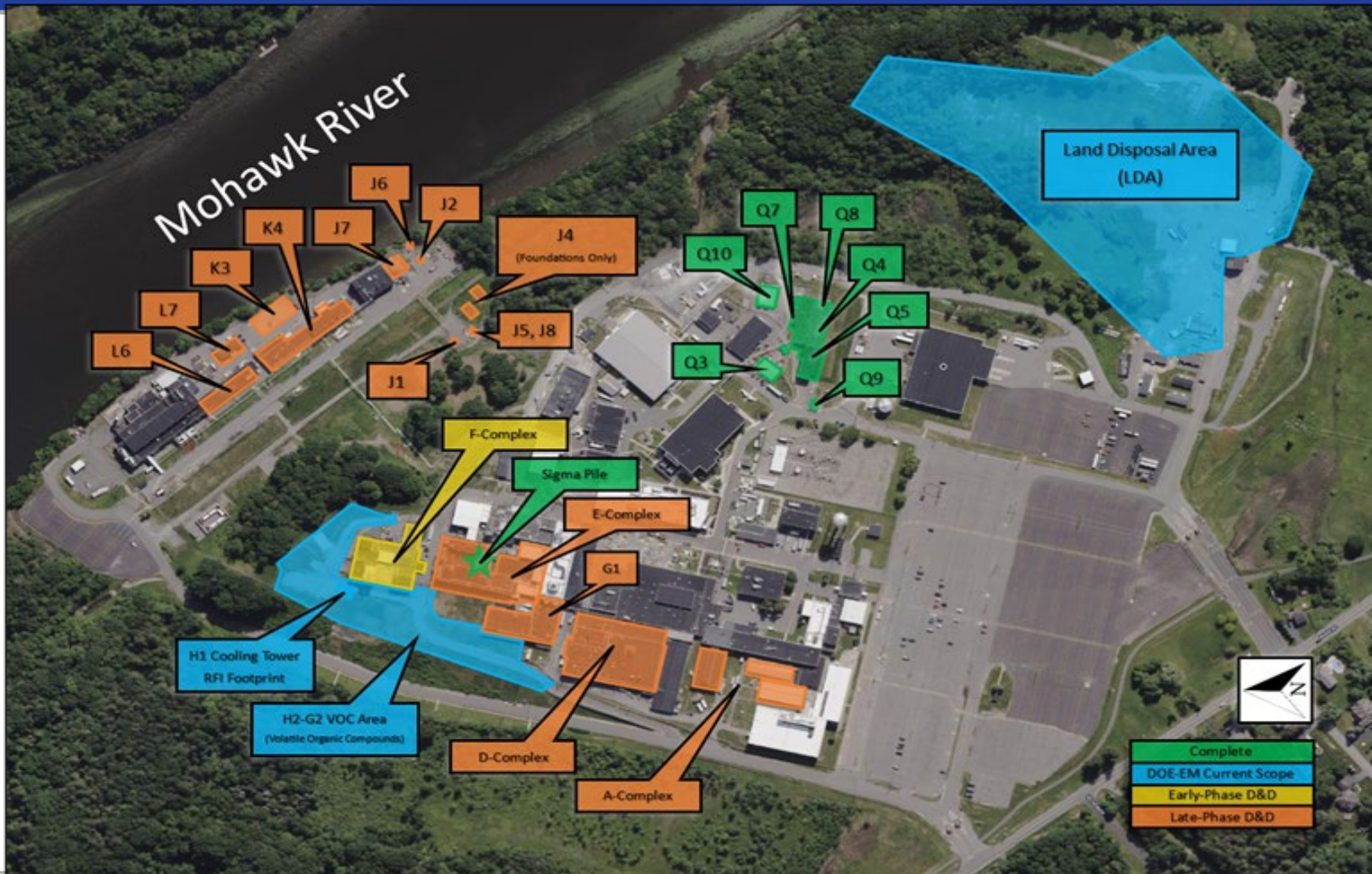


# Scope

- Remediation of contaminated soils
- Decontamination and Demolition of legacy buildings and facilities
- Location(s)
  - Knolls Atomic Power Laboratory in Niskayuna, NY,
  - Kesselring Naval Nuclear Laboratory in West Milton, NY
  - Bettis Atomic Power Laboratory in West Mifflin, PA.



# Knolls Atomic Power Laboratory (KAPL)



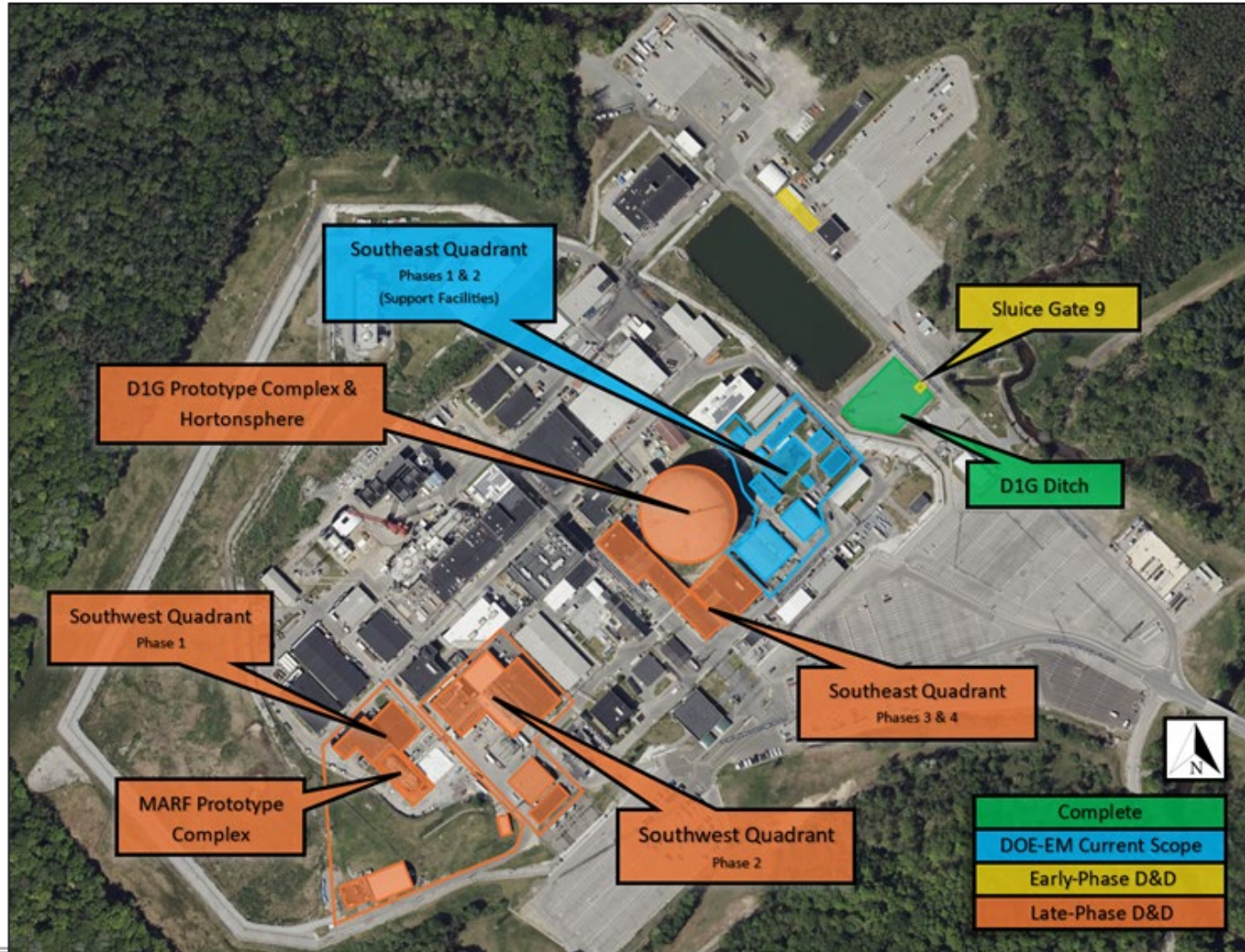
- Sigma Pile and Q-Complex demolition and remediation completed by North Wind Site Services
- APTIM starting two projects.
  - Land Disposal Area
  - H2-G2 VOC Area

# Q-Complex

- Seven structures demolished
- 15,000 cubic yards of material removed and backfilled
- Area returned to Naval Reactors

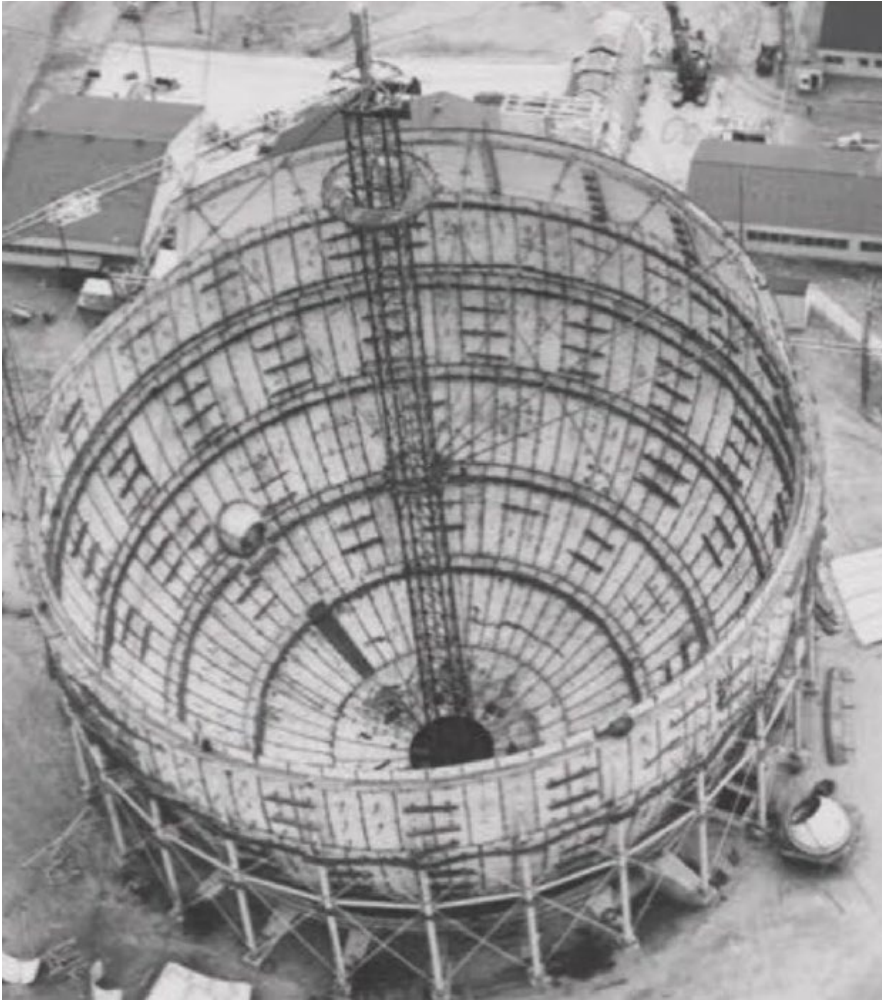


# Kesselring Naval Nuclear Laboratory

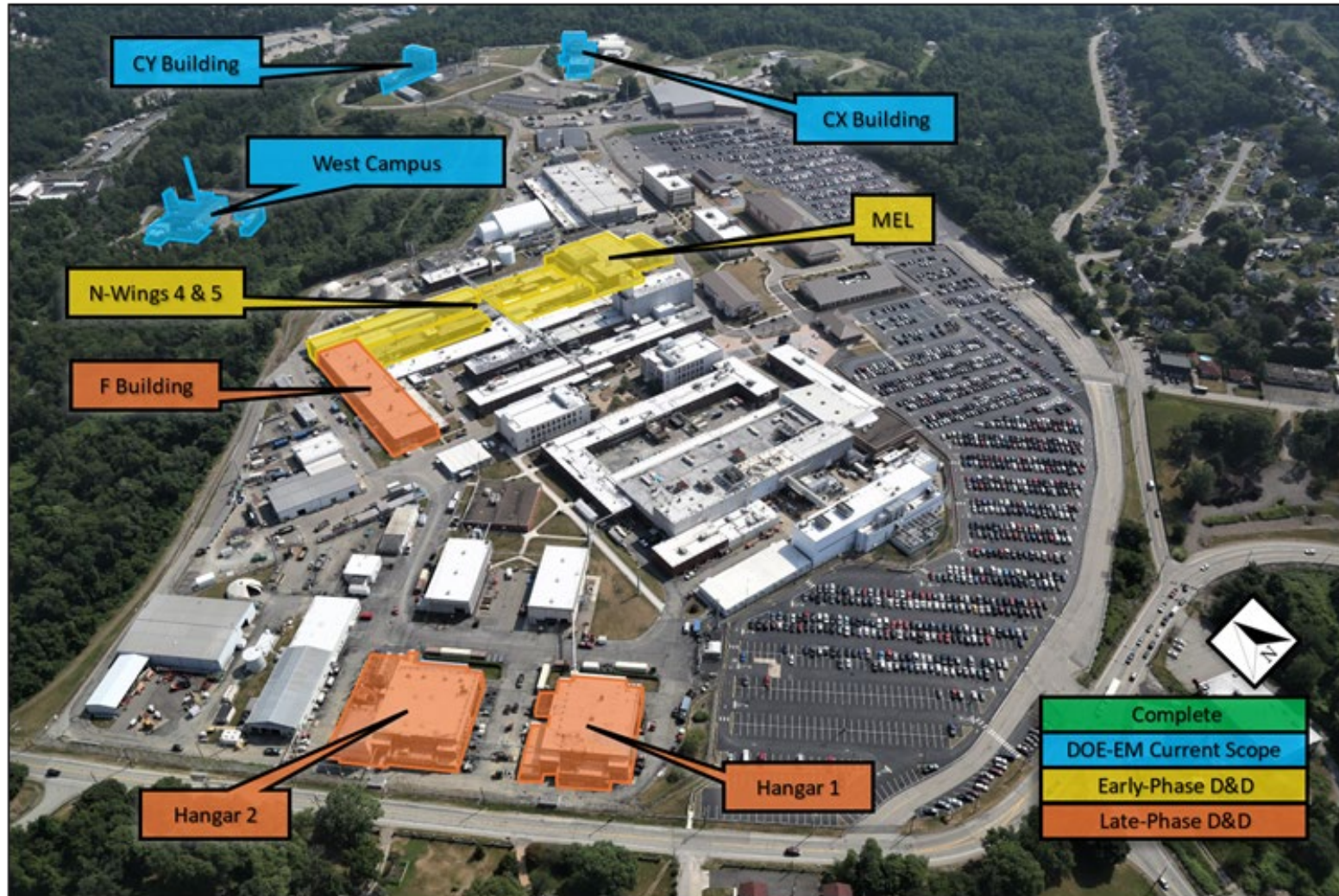


- D1G Ditch remediation completed by RSI
- APTIM starting two projects.
  - Southeast Quadrant Phases 1&2
  - Hortonsphere Study

# Hortonsphere Construction



# Bettis Atomic Power Laboratory



- RSI completed Comprehensive Environmental Response, Compensation and Liability Act, Non-Time-Critical Removal Action process for the CX and CY buildings
- APTIM - CX/CY demolition and remediation
- Arctic Peak - West Campus demolition and construction of haul road

# Sandia National Laboratory



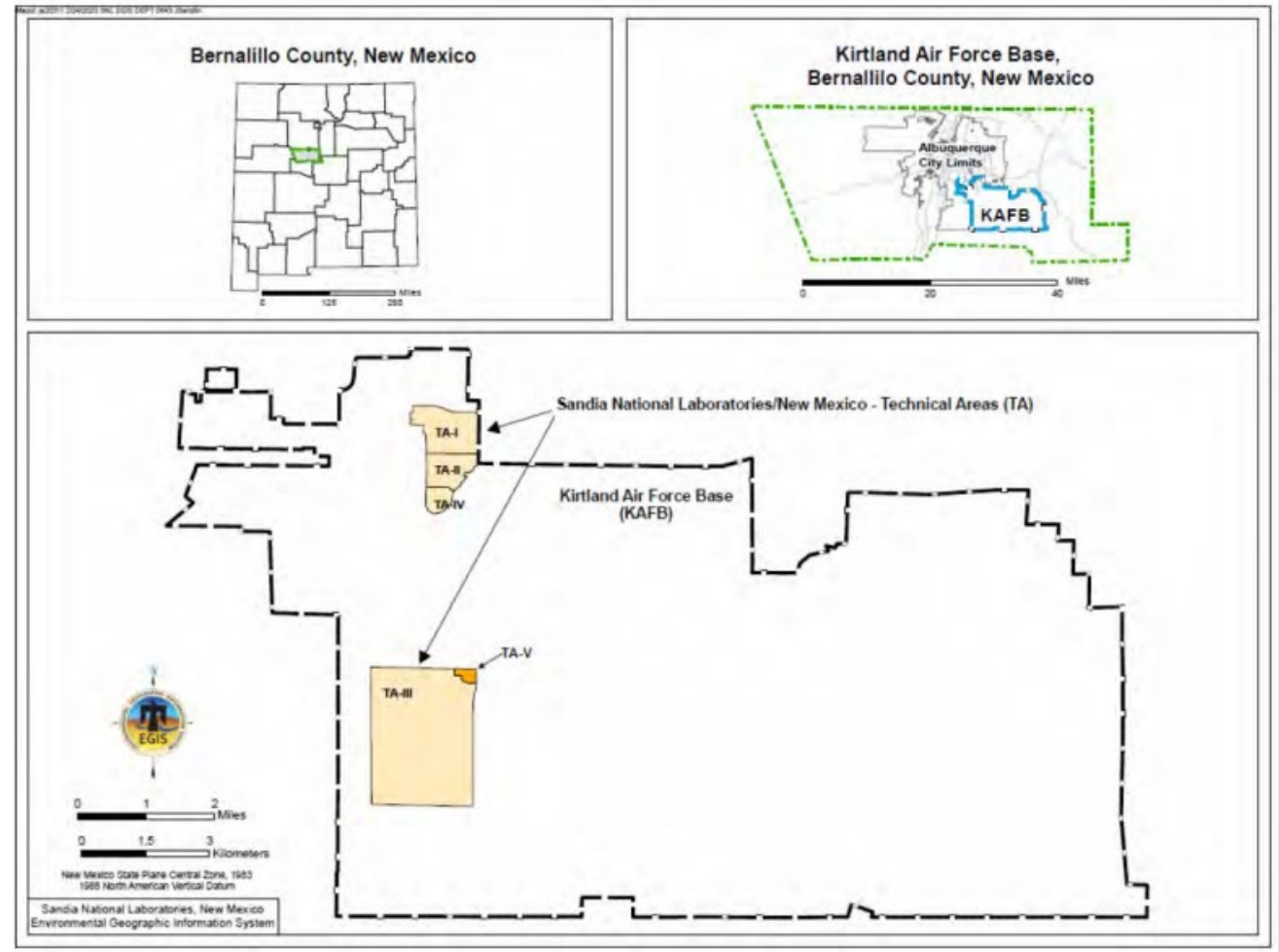
# Overview

## Mission and Vision

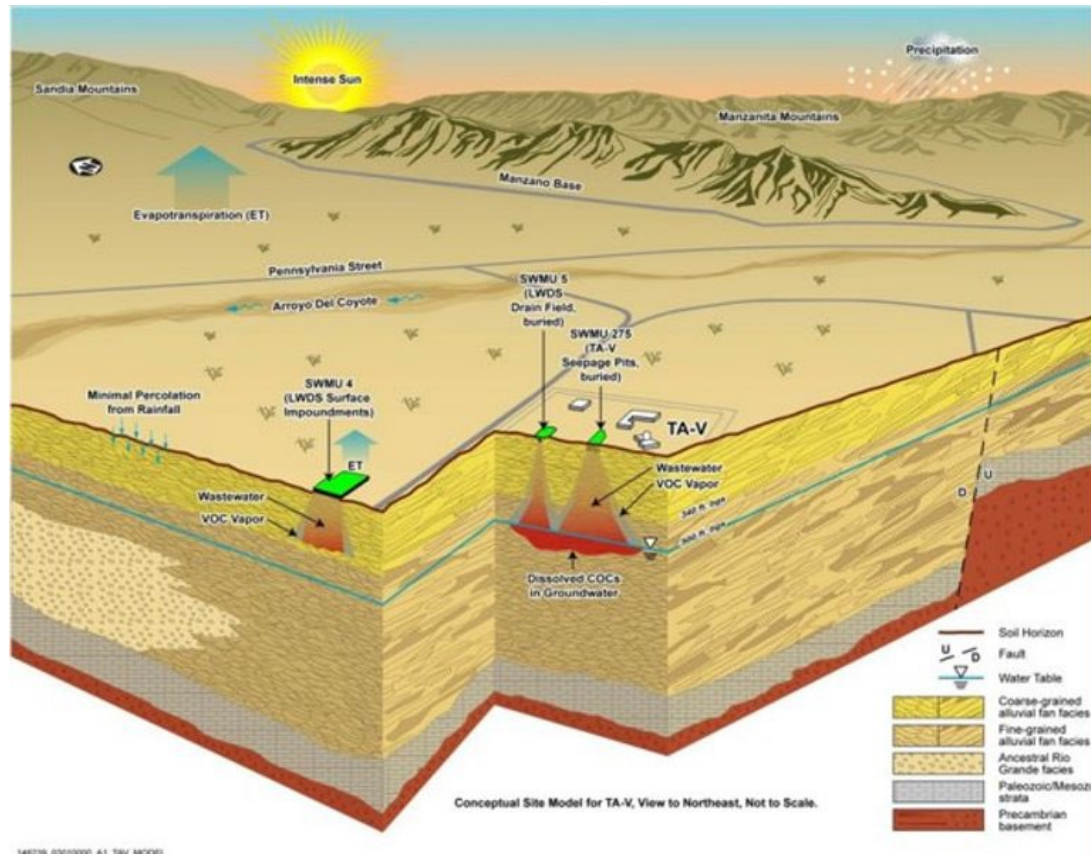
- Groundwater characterization and remedy selection at NNSA managed locations that contain contamination from various Sandia National Laboratory activities

## Goal

- Achieve regulatory end-state decisions for 3 groundwater areas of concern
- Transfer to Sandia for long-term stewardship



# Scope



- Two sites, Tijeras Arroyo and Burn Site transferred to NNSA long-term stewardship in 2025 and 2026
- Technical Area-V (TAV)- Nitrate and Trichloroethene (TCE) contamination from liquid waste disposal from the 1960s-1992
  - Plumes are stable and the groundwater is not impacting human health or the environment

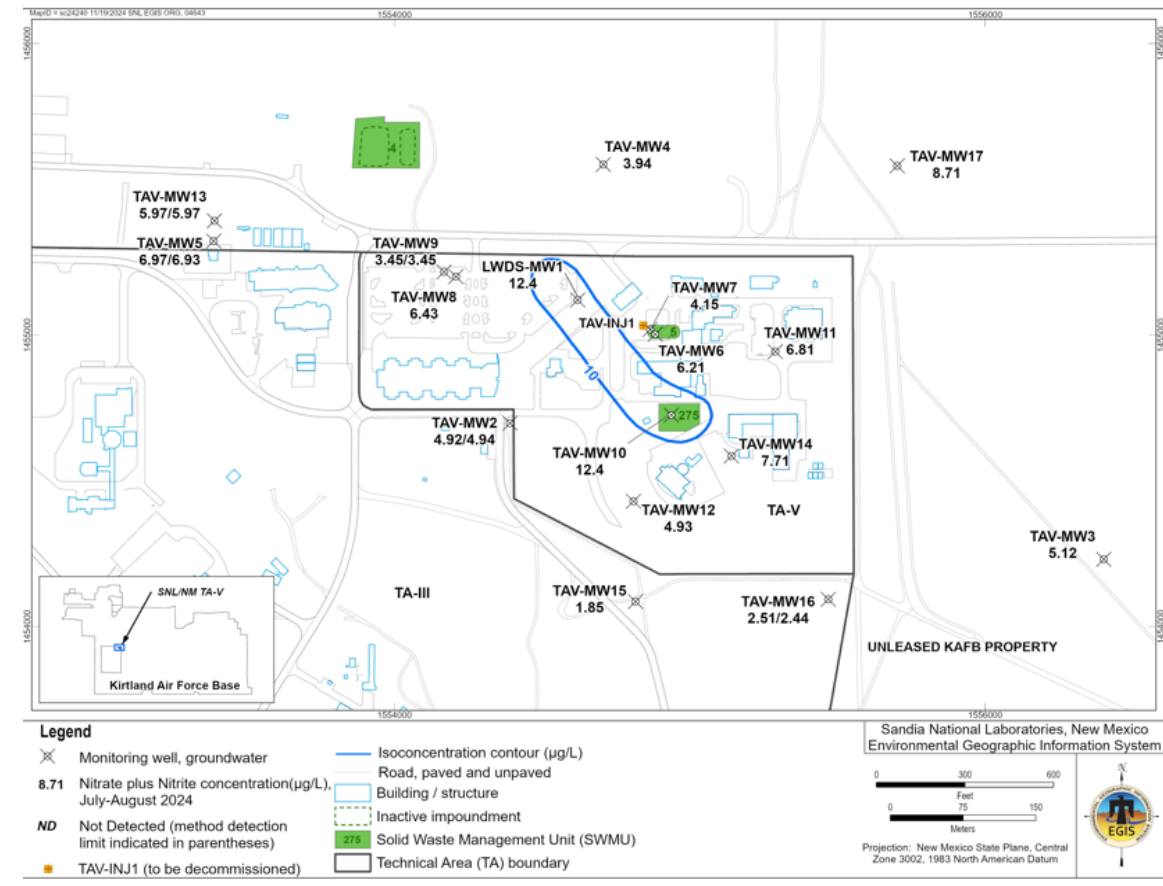
# Current Work + What's Ahead

## Corrective Measures Evaluation Plan

- Submitted May 2024
- Monitored Natural Attenuation is the recommended remedy
- 60-day public comment

## Corrective Measures Implementation Plan

- NMED approval
- DOE EM closeout/NNSA LTS
- Estimated EM closure by 2030





***QUESTIONS?***

# West Valley Demonstration Project

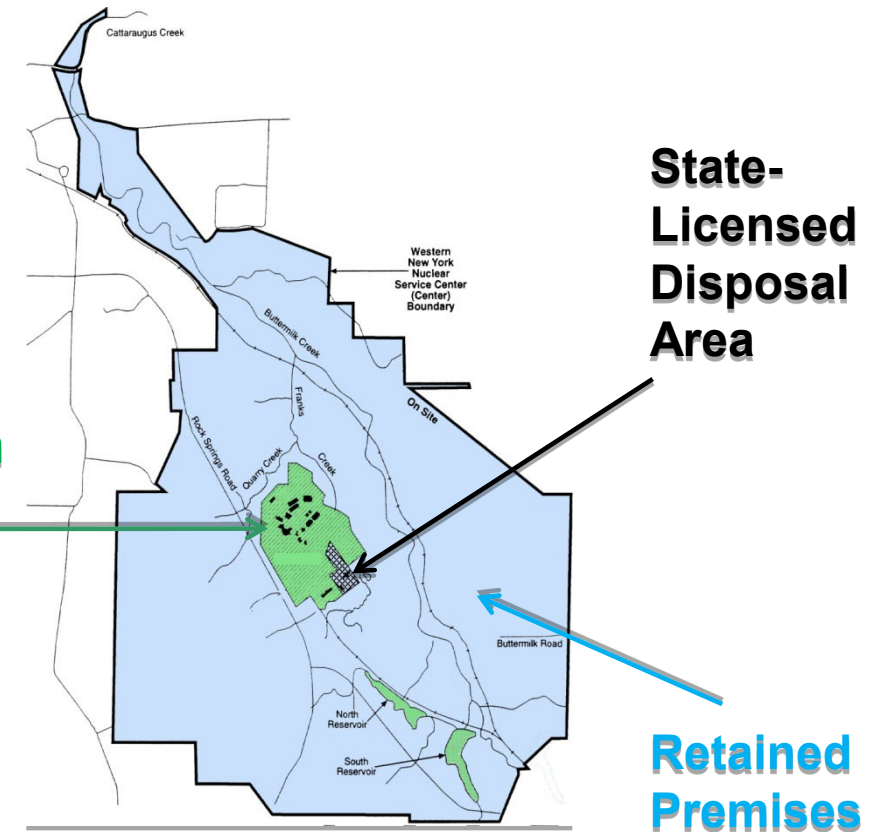


# Project Overview

- Located near West Valley, NY
- Former fuel reprocessing plant operated from 1966-1972
- Processed 640 metric tons of used nuclear fuel
- Only commercial used nuclear fuel reprocessing plant in the U.S.

## 3 OPERATIONAL AREAS

**West Valley  
Demonstration  
Project  
Premises**

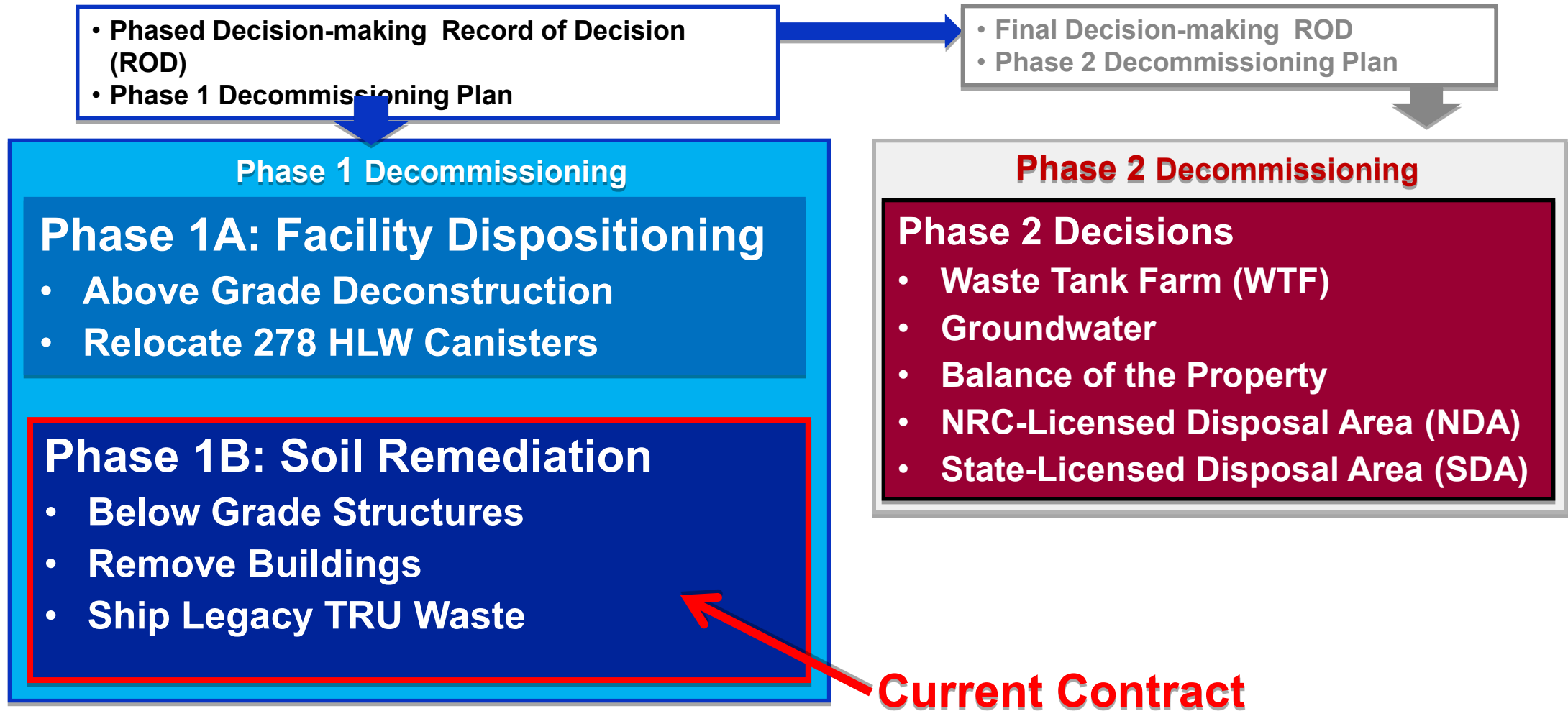


# Scope

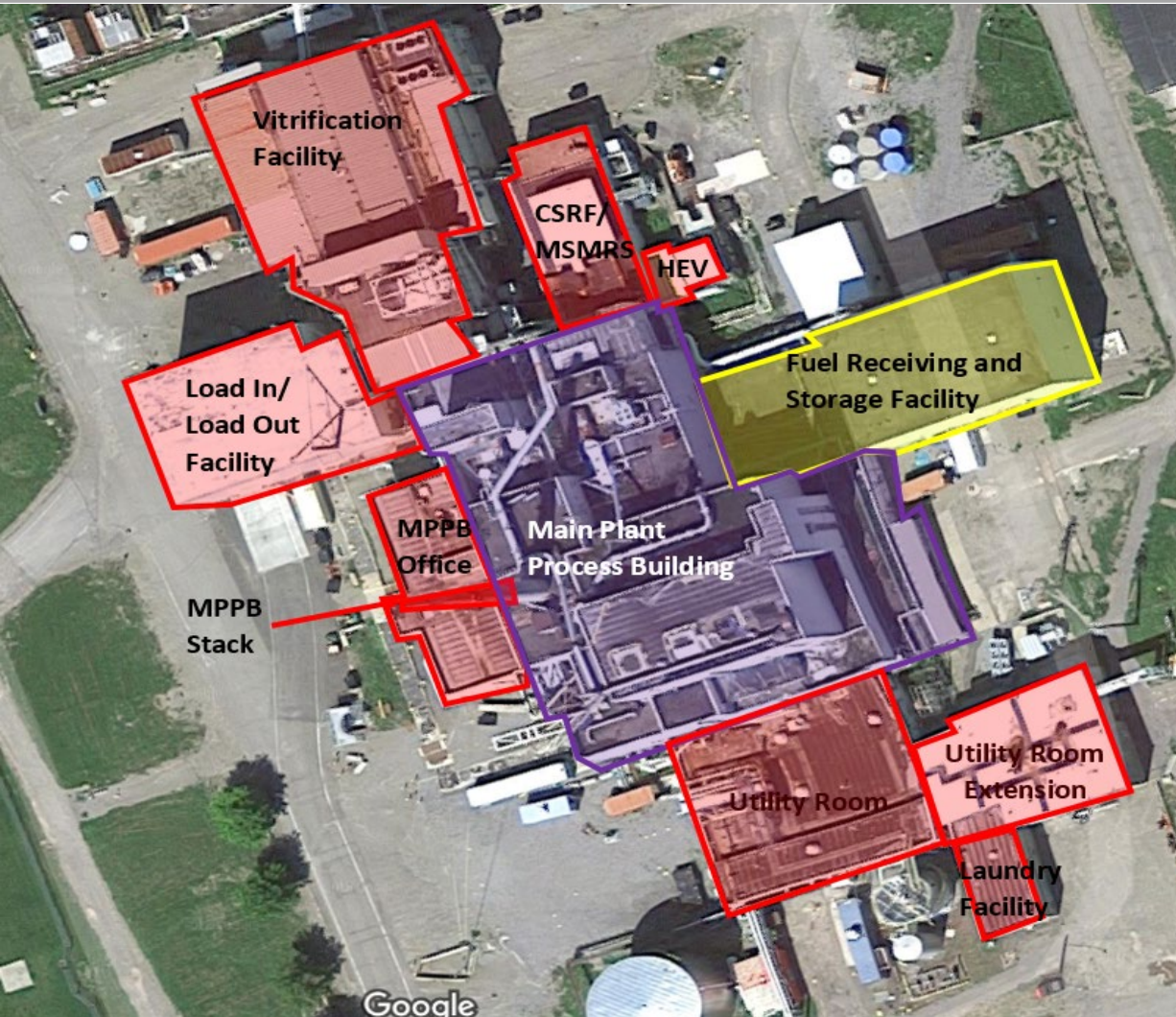
- Clean up the only commercial nuclear fuel reprocessing plant to operate in the United States.
- EM's work includes:
  - Building demolition,
  - soil remediation,
  - tank and disposal area closure,
  - waste management.



# WVDP Phased Decision Making



# Phase 1A - Main Plant Process Building



- Successful Open-Air Demolition
- Ahead of Schedule and Under Budget
  - One Month Early, ~\$42M Under Budget
- Partnering with Internal and External Stakeholders



# Phase 1A - Site Progress

>58 M Pounds

of MPPB (above-grade) waste  
shipped off site

1,394

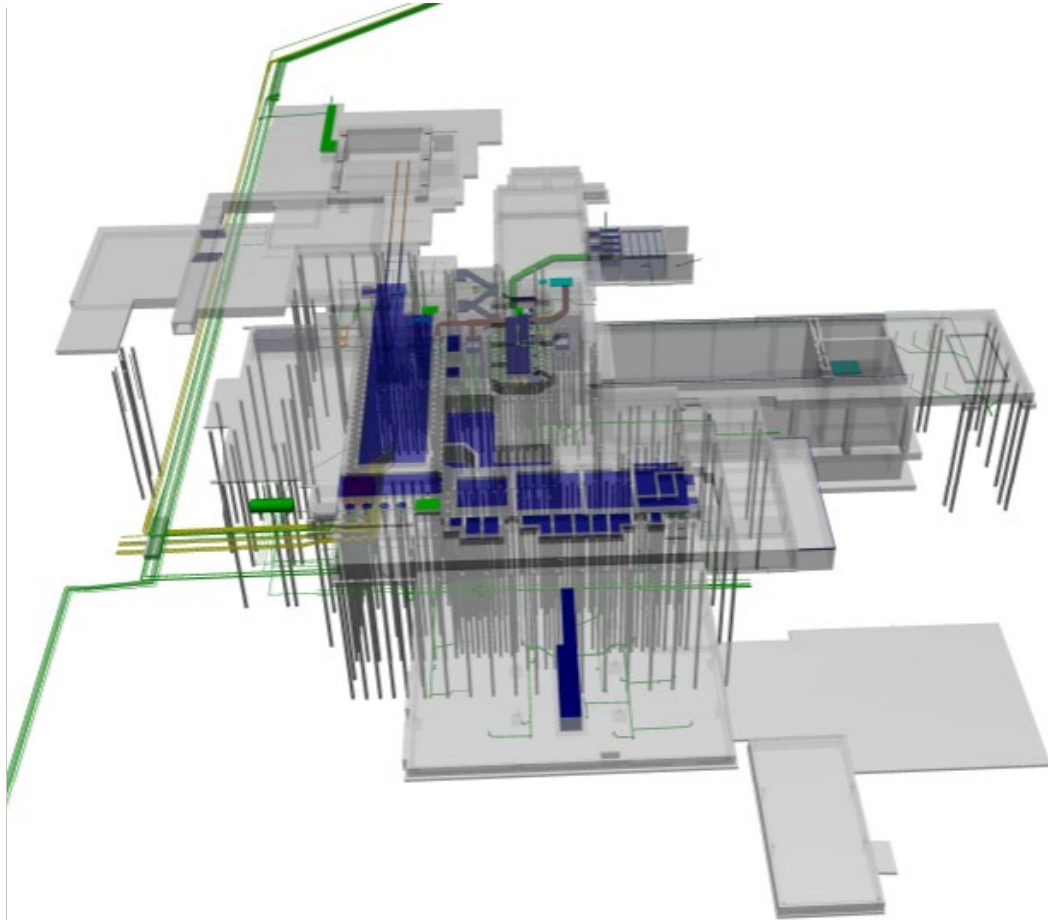
Containers shipped by Rail

162

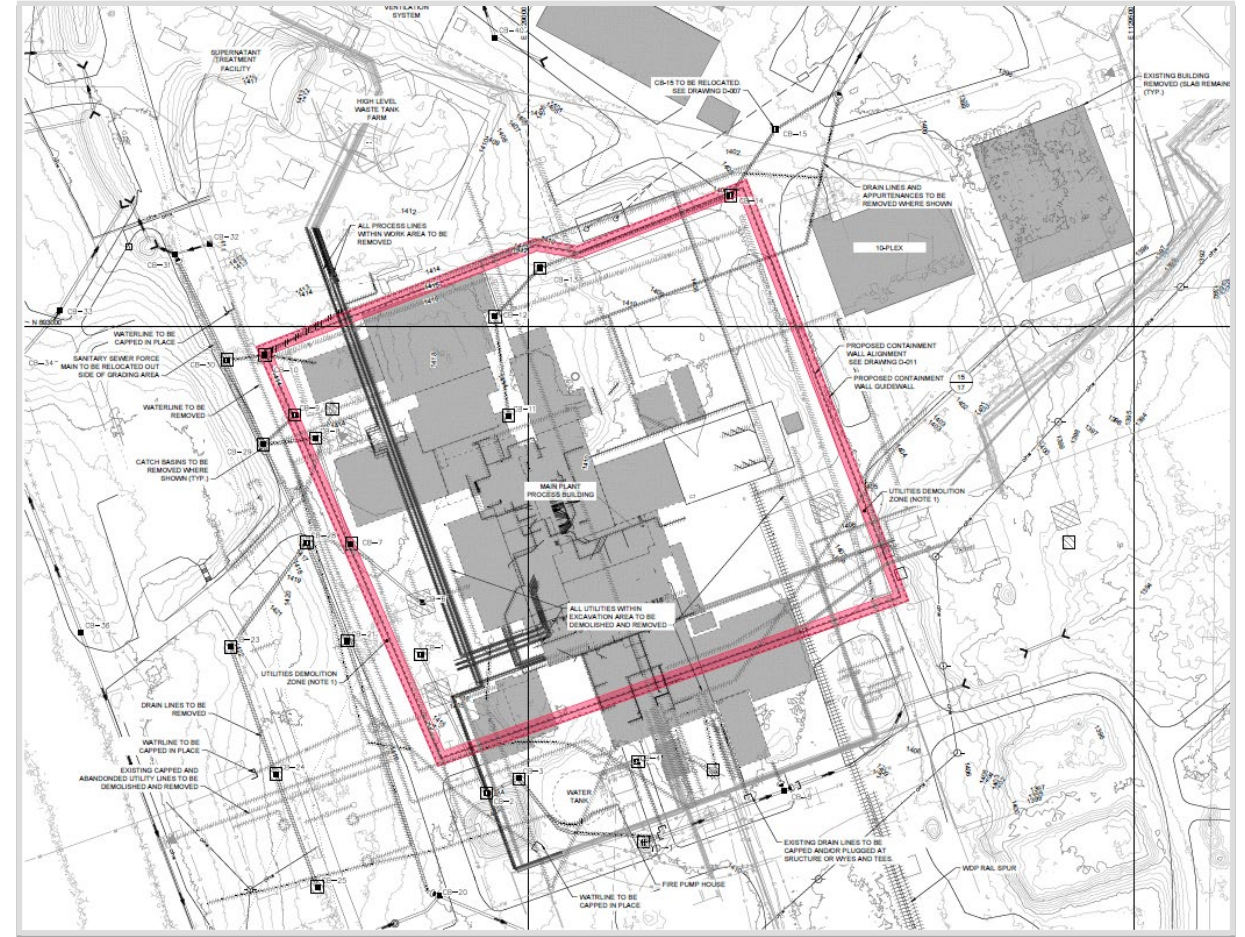
Containers shipped by Highway



# Phase 1B - MPPB Waste Management Area 1



3-D Model of At-Grade and Below-Grade MPPB Infrastructure – More Than Above-Grade!



Draft 60% Design of MPPB Excavation Area

# Next Steps – The End of Phase 1



2025 Site Configuration



2040 Anticipated Site Configuration