



April 16, 2026

Chair
Ben Stinnett

Vice-Chair
Gayle Brewer

Board Members
Eric Butterbaugh
William Robert Clark
Gaylon Grubbs
Reese Henderson
Joycelyn Lightfoot
Myron Wessell
Riley Willett

April Ladd
DOE DDFD

Board Liaisons
April Webb
Division of Waste Management

Brian Begley
Environmental Protection Agency

Mike Hardin
Fish and Wildlife Resources

Support Services
EHI Consultants, Inc.
Emerging Technology Center
5100 Alben Barkley Dr.
Paducah, KY 42001
Phone 270.554.3004
www.energy.gov/pppo/pgdp-cab
info@pgdpcab.org

April 2026 Citizens Advisory Board Meeting Agenda

5:30 pm

Call to order, introductions
Review of agenda

DOE Comments

Federal Coordinator Comments

Liaison Comments

Administrative Issues

Presentation

Annual Site Environmental Report
Future Use of DOE Paducah Site

Public Comments

Final Comments

Adjourn

2024 Annual Site Environmental Report

Paducah CAB

April 16, 2026

Mitchell Guthrie



U.S. DEPARTMENT
of ENERGY

Annual Site Environmental Report (ASER)

- DOE Order 231.1B – Environment, Safety and Health Reporting
- Offers detailed overview of environmental activities at the Paducah Site
- Monitoring conducted to determine if cleanup activities are impacting the workforce, environment or site neighbors

US Department of Energy
Paducah Gaseous
Diffusion Plant

2024



Paducah Site



U.S. DEPARTMENT of ENERGY

Environmental Sampling Includes...

Each year more than 2,000 samples are collected from both on and off-site sources



Ambient Air



Surface Water



Groundwater

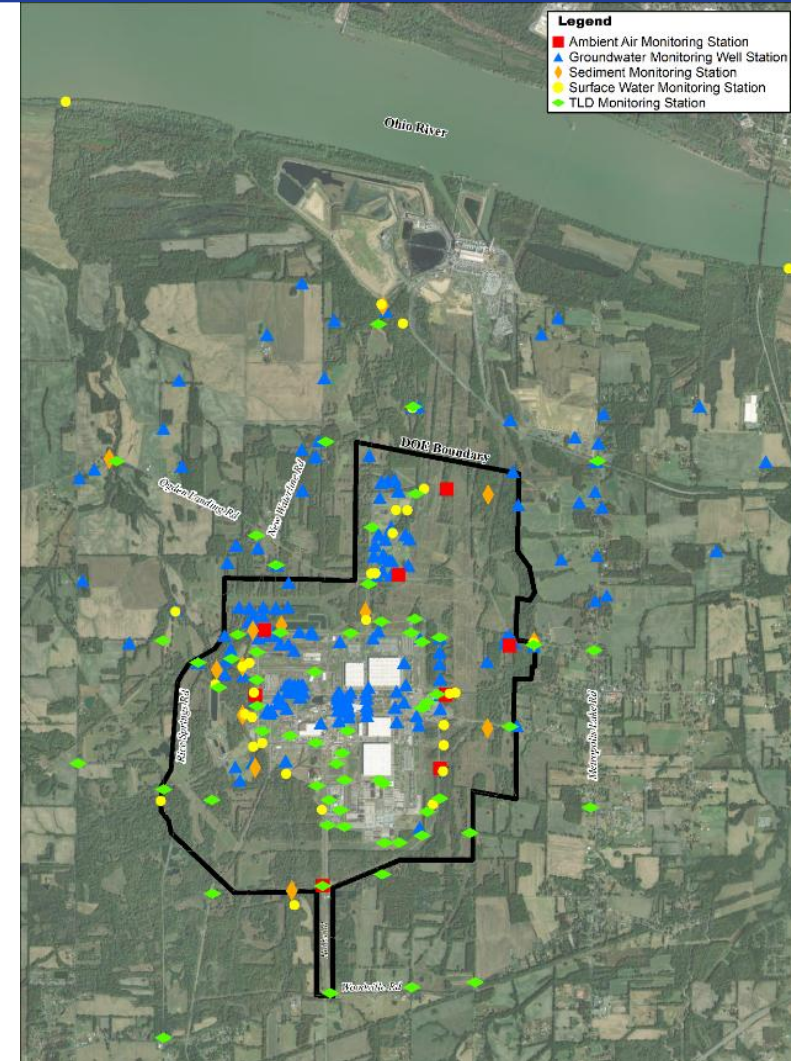


Soil



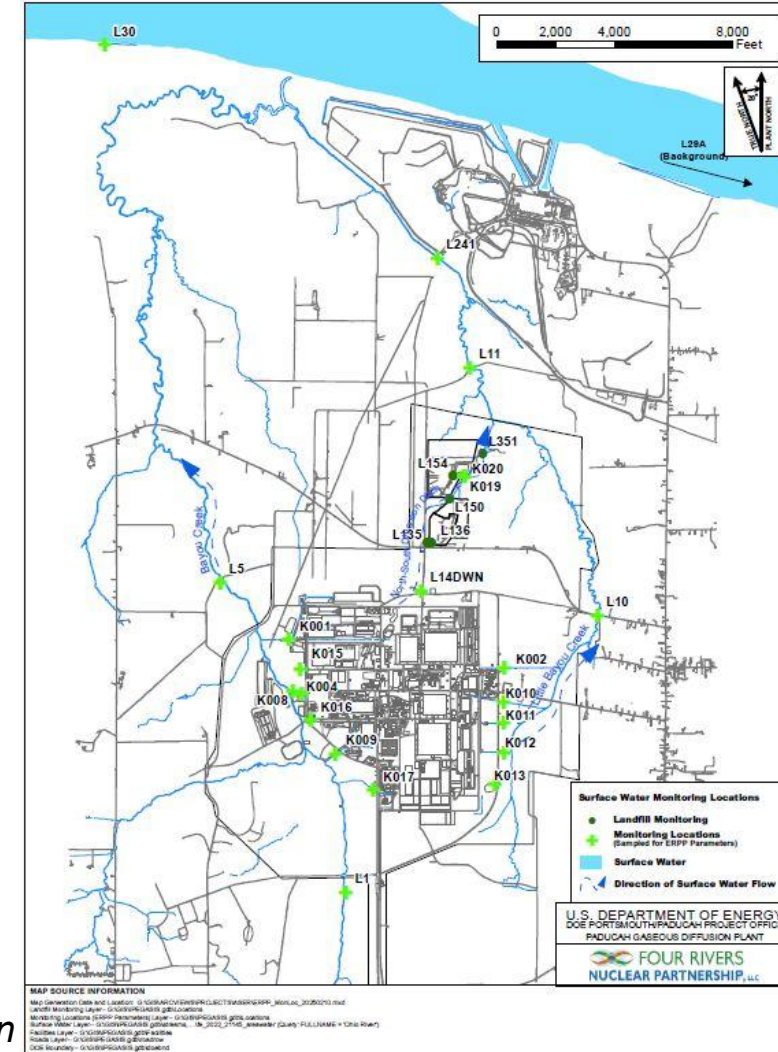
Sampling

- In 2024, more than 2,000 samples of air, sediment, and water collected and analyzed for radioactive and nonradioactive contaminants:
 - Air: 504
 - Sediment: 34
 - Surface Water: 679
 - Groundwater: 879



2024 Major Sampling Efforts – Water Quality

- Monitoring for water quality performed at locations where water flows into the Bayou and Little Bayou creeks
- 277 surface water samples analyzed for multiple parameters as part of Kentucky Pollutant Discharge Elimination System Permit monitoring during 2024

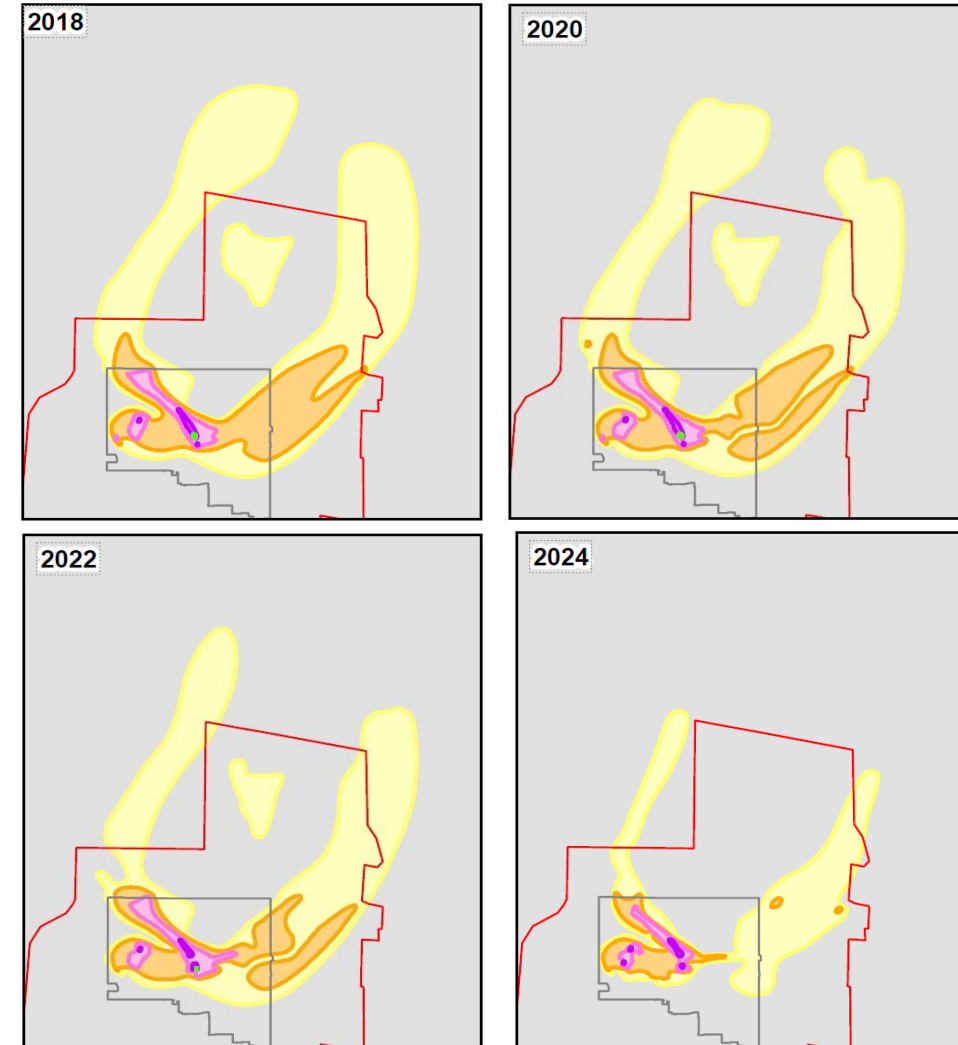


Not all sampling locations shown



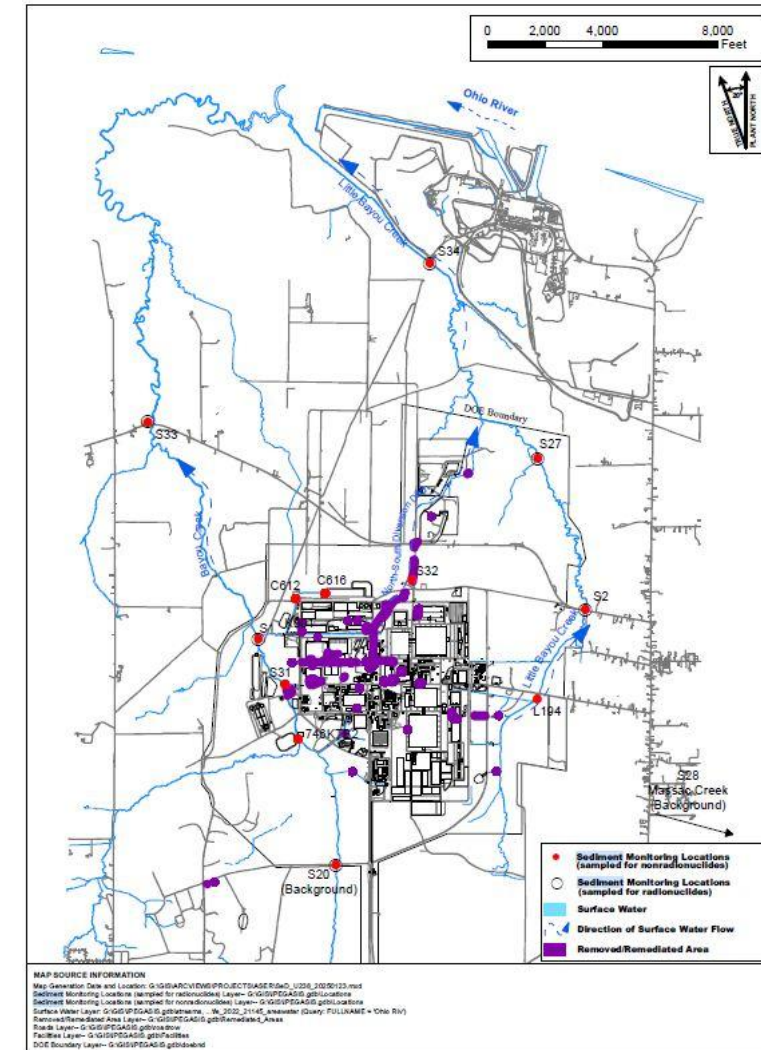
2024 Major Sampling Efforts – Groundwater

- Concentrations of primary contaminants detected in the groundwater plumes at the Paducah Site continued to decrease in 2024
- Plume maps are updated every two years



2024 Major Sampling Efforts – Soil

- Samples collected at various locations, on and off-site
- Focus on radiological and non-radiological contaminants
- Analyzed for radionuclides and polychlorinated biphenyls (PCBs)



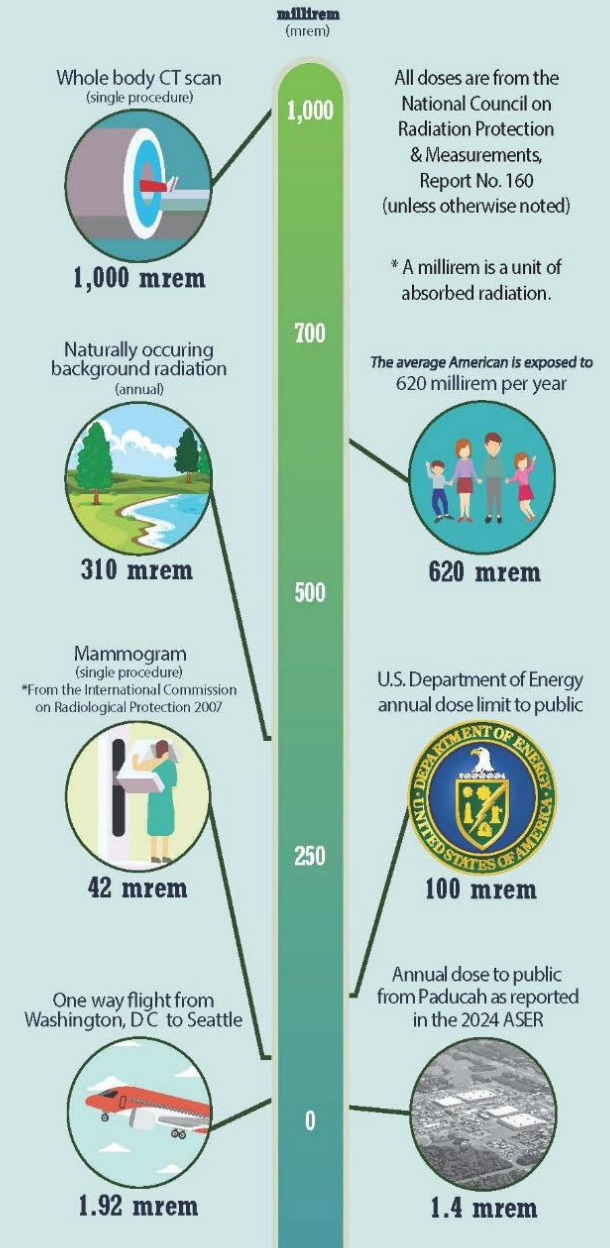
Not all sampling locations shown



2024 Environmental Risk Summary

- The sampling results are compiled for a dose calculation
- In 2024, The calculated radiation dose that could be received by a member of the public from activities at the Paducah Site was 1.4 millirem (mrem)
 - DOE annual dose limit = 100 mrem

RELATIVE DOSES FROM RADIATION SOURCES



2024 Environmental Summary

- The Paducah Site received two Notices of Violation during 2024
 - NOV ENV20240002 issued for the total recoverable zinc exceedance at KPDES Outfall 013
 - NOV ENV20240001 issued for the total suspended solids exceedance at KPDES Outfall 015
- Environmental monitoring data collected in 2024 similar to data collected in previous years
- Continues to show reduction in contaminants at the site
 - Demonstrates effectiveness of cleanup efforts



ASER Public Outreach

- Key component of DOE's effort to inform the public about environmental conditions at the Paducah Site
- Access the ASER online by visiting
 - <https://www.energy.gov/pppo/articles/paducah-annual-site-environmental-reports>
 - <https://www.fourriversnuclearpartnership.com>
- Mailed to identified stakeholders
- Available online at the Paducah Environmental Information Center
- Printed and distributed to community leaders, the CAB, the McCracken County Library, etc.
- Monitoring results available via PPPO Environmental Geographic Analytical Spatial Information System (PEGASIS) at <https://pegasis.pad.pppo.gov/>



Student ASER

- A partnership with Murray State University
- McCracken County High School selected for 2025-2026 academic year
- Student ASER provides a visual, condensed and non-technical summary of ASER



Student ASER

- Goals
 - Educational Outreach
 - Skill Development
 - Environmental Awareness
 - Career Exploration
 - Community Engagement



Student ASER Expo

- Students create academic posters and present to the public
- Showcases students finding and work
- Students receive certificates of achievement
- 2025-2026 Student ASER Presentations
 - Thursday, April 23
 - 4-6 p.m. @ Murray State University – Paducah Campus
 - 4430 Sunset Avenue, Paducah, Ky





U.S. DEPARTMENT
of ENERGY



Greater Paducah

ECONOMIC DEVELOPMENT





Food Prep & Serving Related Industries

"Q2 2025 1.40"

LQ = 1.33

\$30,100



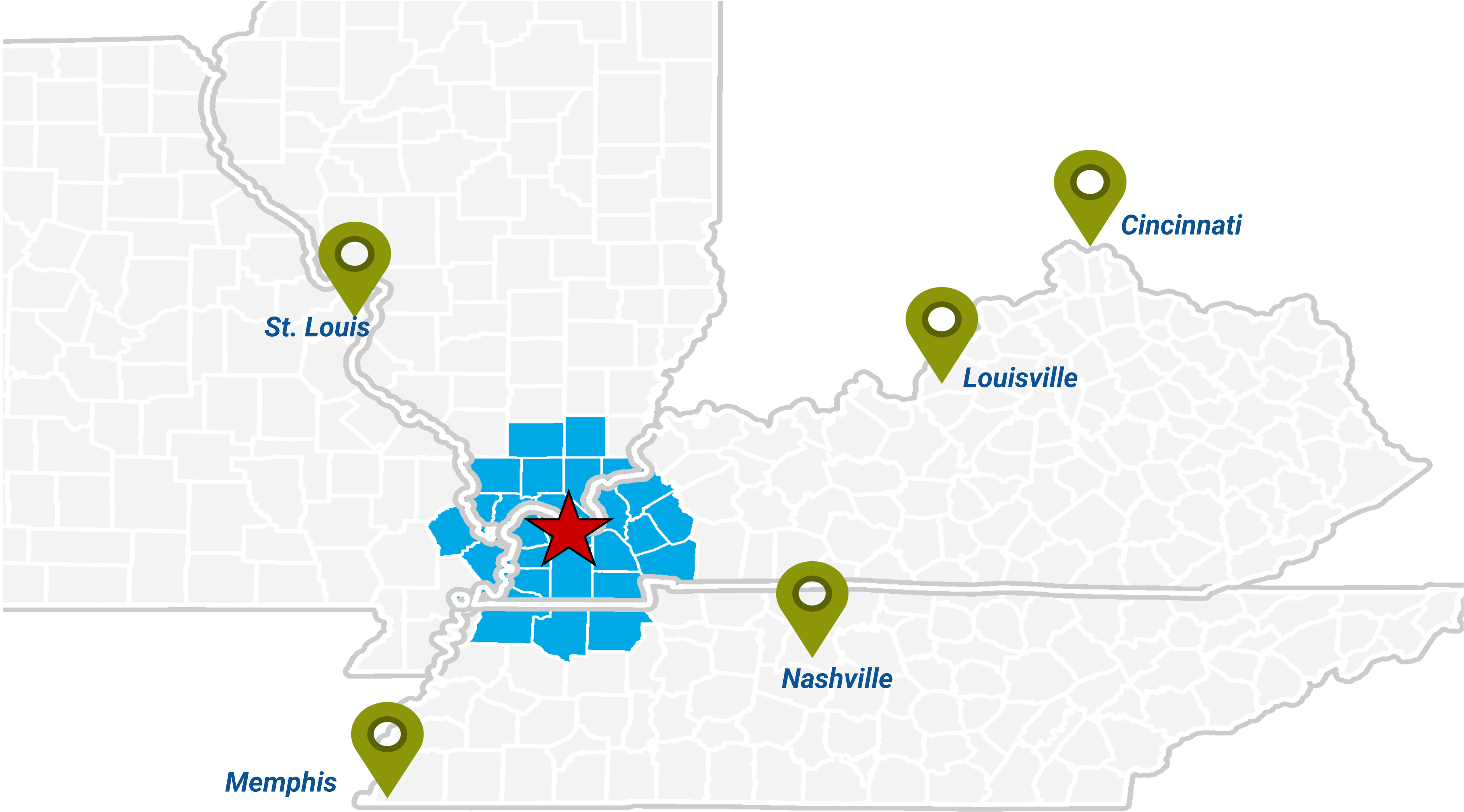
Living Wage

\$40,352 / Year

(Or \$19.40 / Hour)



Greater Paducah Labor Shed



Source: JobsEQ, 2024Q1 Economic Overview for McCracken County, Kentucky
American Community Survey 2018-2022



Labor Shed Poverty Rate

16.6%

Federal Poverty Income Level ~ \$30,000

(11% Nationally)

(15% McCracken County)

(22% within City of Paducah)



43,299

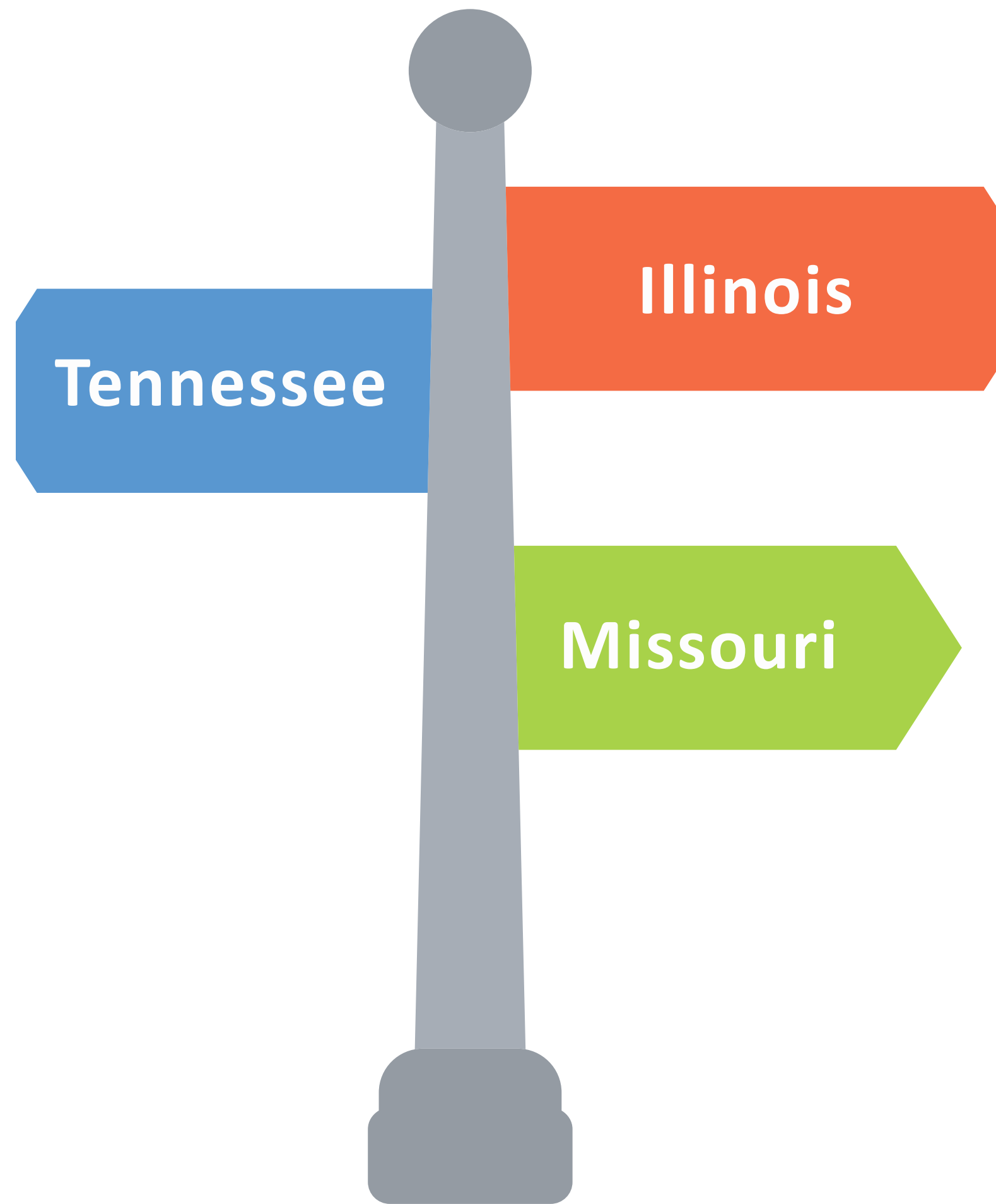
Jobs In McCracken County

\$58,800 Average Wage

(\$44,680 December 2019)



The Inbound Commuter



20,300 McCracken County Jobs are filled with Non-Residents

- 6,600 = trade, transportation, and utility jobs
- 2,400 = goods-producing jobs
- 11,300 = All other industry sectors
- **9,464 = monthly wages < \$1,250 - \$3,333**



3.6%

Unemployment Rate

(December '25)





Greater Paducah
ECONOMIC DEVELOPMENT

OUR MISSION

Greater Paducah Economic Development (GPED) is a public/private partnership that exists to proactively recruit and support companies that provide high-quality, high-paying jobs for our region.



Strategy, Trends, & Insights





Nuclear Ready State and Community



- ✓ Kentucky Nuclear Energy Development Authority Established
 - Incentives added in 2025 by General Assembly

- ✓ Nuclear Ready Community Resolutions
 - McCracken County
 - City of Paducah
 - Paducah Area Chamber of Commerce
 - Greater Paducah Economic Development
 - Paducah Area Community Reuse Authority

2011 UK Survey – Community Desire to Reindustrialize the Site

2017 DOE & EPA On-Line Survey “Reconfirmed Community Reindustrialization”

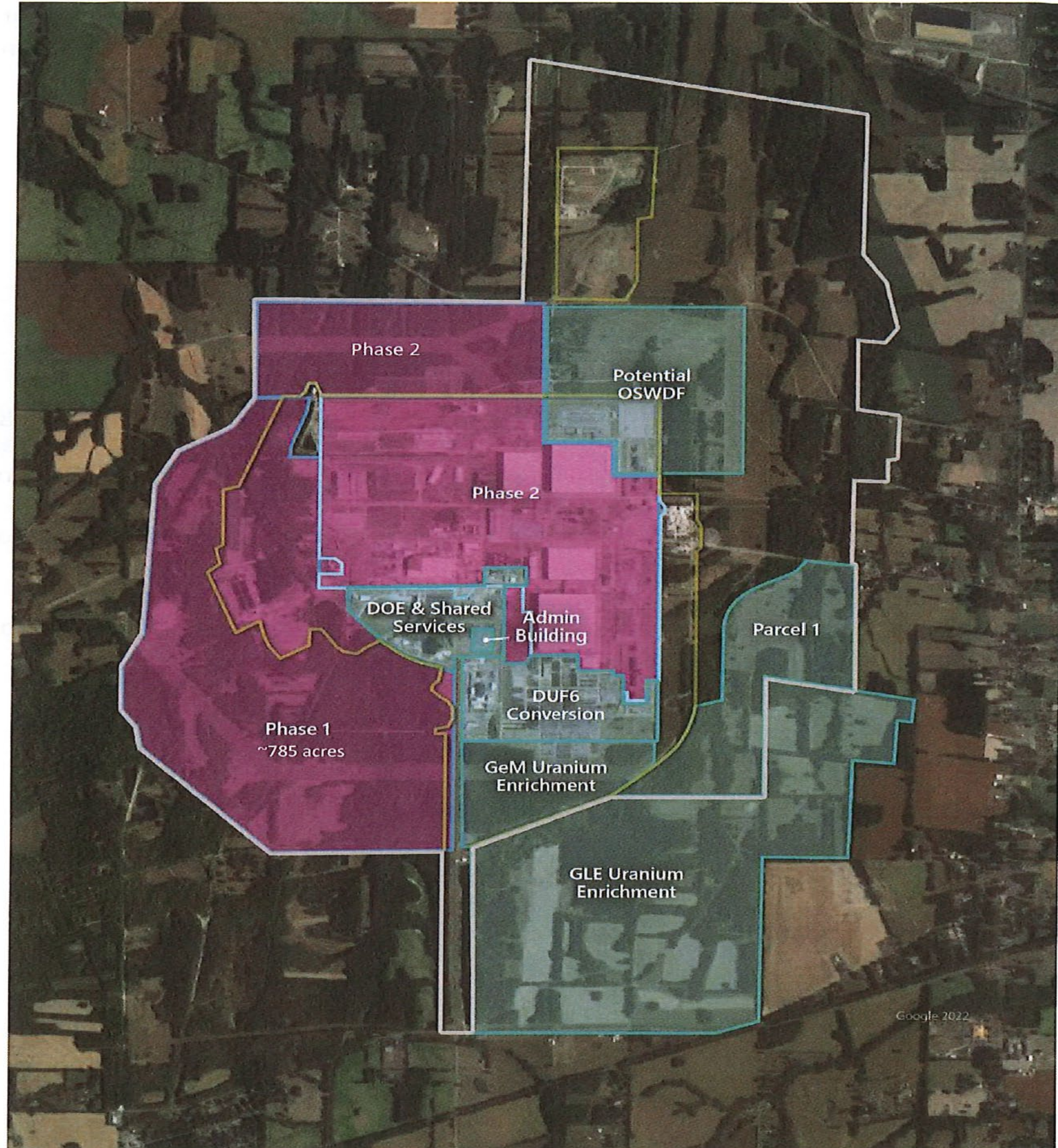


Site Overview

- **Global Laser Enrichment**
- **General Matter**
- **Artificial Intelligence**
- **Nickel Expressions of Interest**
- **Potential On-Site Waste Disposal Facility**



DEPARTMENT OF ENERGY (DOE) OFFICE OF ENVIRONMENTAL MANAGEMENT (EM)
COMMERCIAL AI & ENERGY GENERATION INFRASTRUCTURE PROGRAM
REQUEST FOR OFFER (RFO) NUMBER: DE-FOA-0000000





Land Swap Completed:	November 2024
NRC License Application:	June 2025
TRL Announced:	November 2025
Federal Award:	\$28 Million Q1 '26
Formerly Announced:	March 26, 2026
Capital Investment:	\$1.762 Billion
Job Creation:	240
Average Rate of Pay:	\$100,000 +
Recurring Annual Impact:	\$113.6 Million
Operational:	~2030



You're Invited

GLOBAL
Laser Enrichment

Open House



April 29, 2026

4:00 - 6:30 PM

**Walker Hall Events
Center**

229 Madison Street
Paducah, KY 42001

Learn about GLE's vision, technology, and the planned Paducah Laser Enrichment Facility.

For More Information

<https://www.gle-us.com>





DOE Lease Completed:	June 2025
Formerly Announced:	August 2025
Federal Award:	\$900 Million Q1 '26
Current Status:	Clearing / Grubbing / Site Work
Capital Investment:	\$1.5 Billion
Job Creation:	140
Average Rate of Pay:	\$100,000 +
Recurring Annual Impact:	\$71.1 Million
Operational:	~2030

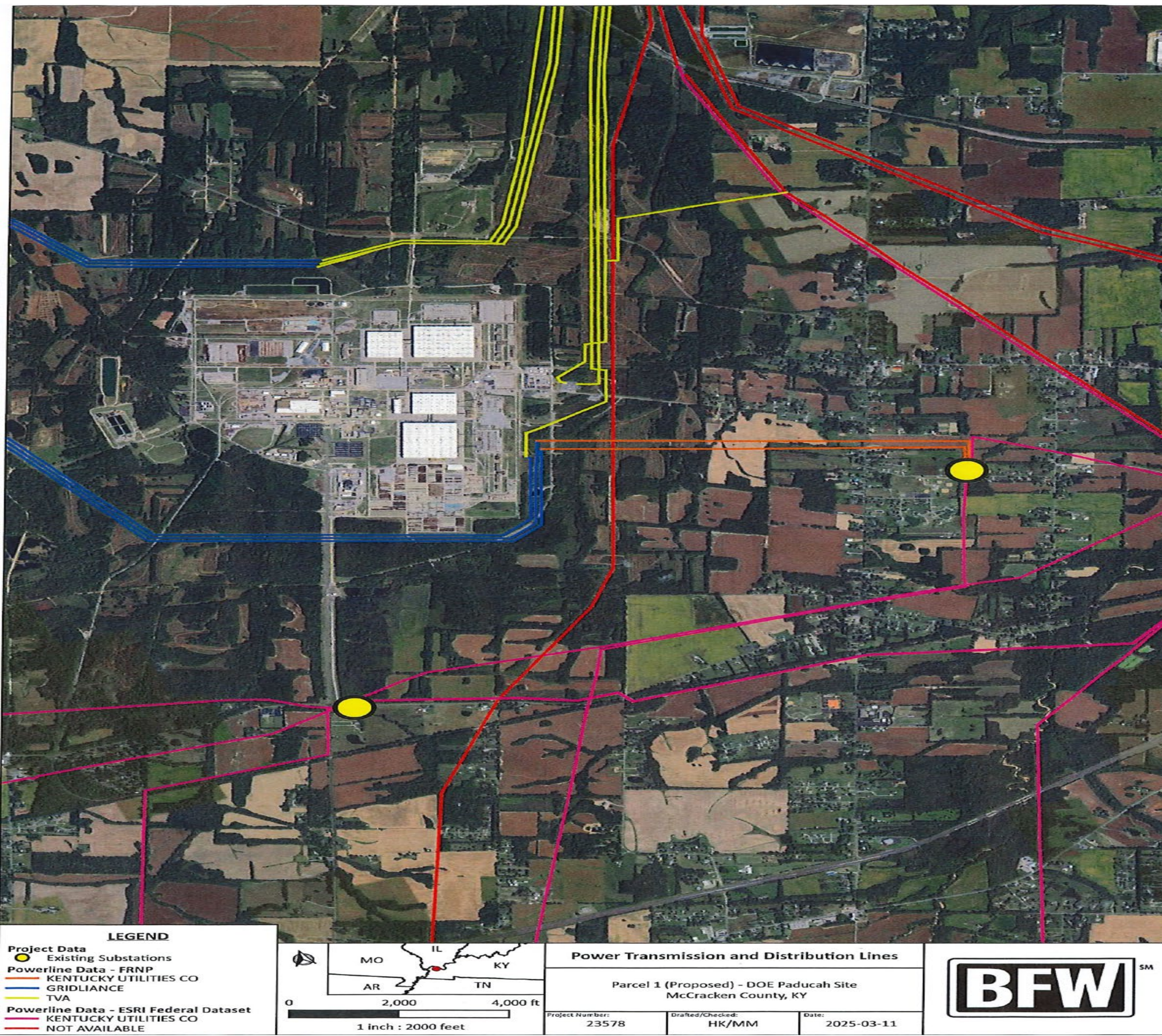


DOE AI Request for Offers

Identified as Preferred Site:	July 24, 2025
Industry Day Hosted:	December 18, 2025
Request for Offers Submitted:	January 31, 2026
Submission Evaluations:	In-Process
Announcement:	? – Next 45 to 60 Days
New Power Generation:	Data Center Load <u>PLUS</u> Anticipate Natural Gas
Water Demand:	Existing 30 MGD Pump Chilled Closed Loop



Electricity

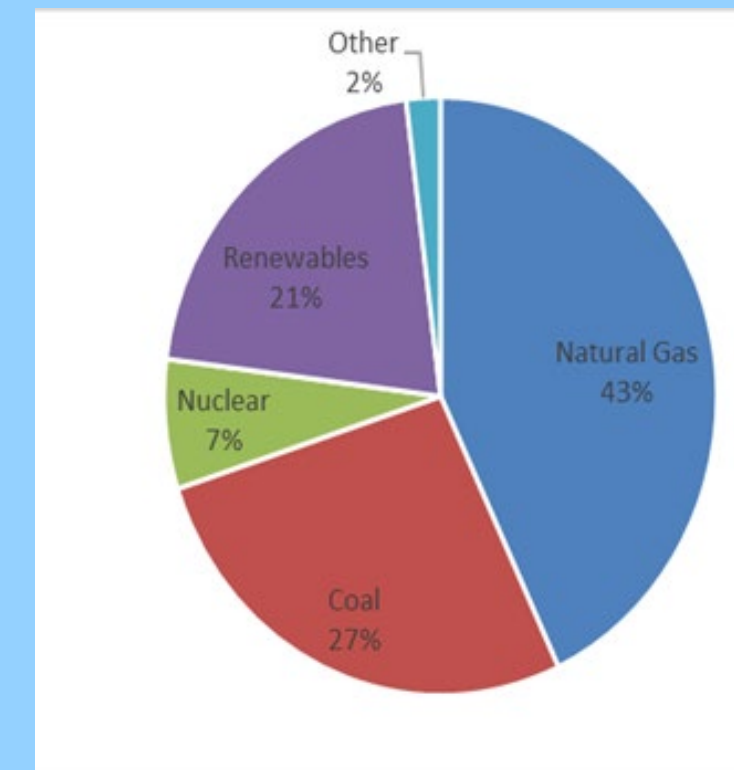


MIDCONTINENT INDEPENDENT SYSTEM OPERATOR

MISO membership provides access to 200,000 megawatts of power-generating resources



Midcontinent Independent System Operator (MISO), a not-for-profit member-based organization that ensures reliable, least-cost delivery of electricity across all or parts of 15 U.S. states and one Canadian province.



Nickel Expressions of Interest

Expressions of Interest Identified:	November 21, 2025
Interested Party Visits to Paducah:	2
Expressions of Interest Submitted:	February 19, 2026
Submission Evaluations:	In-Process
Announcement:	?



Other Industry Segments of Interest

Conversion

De-Conversion

Fuel Fabrication

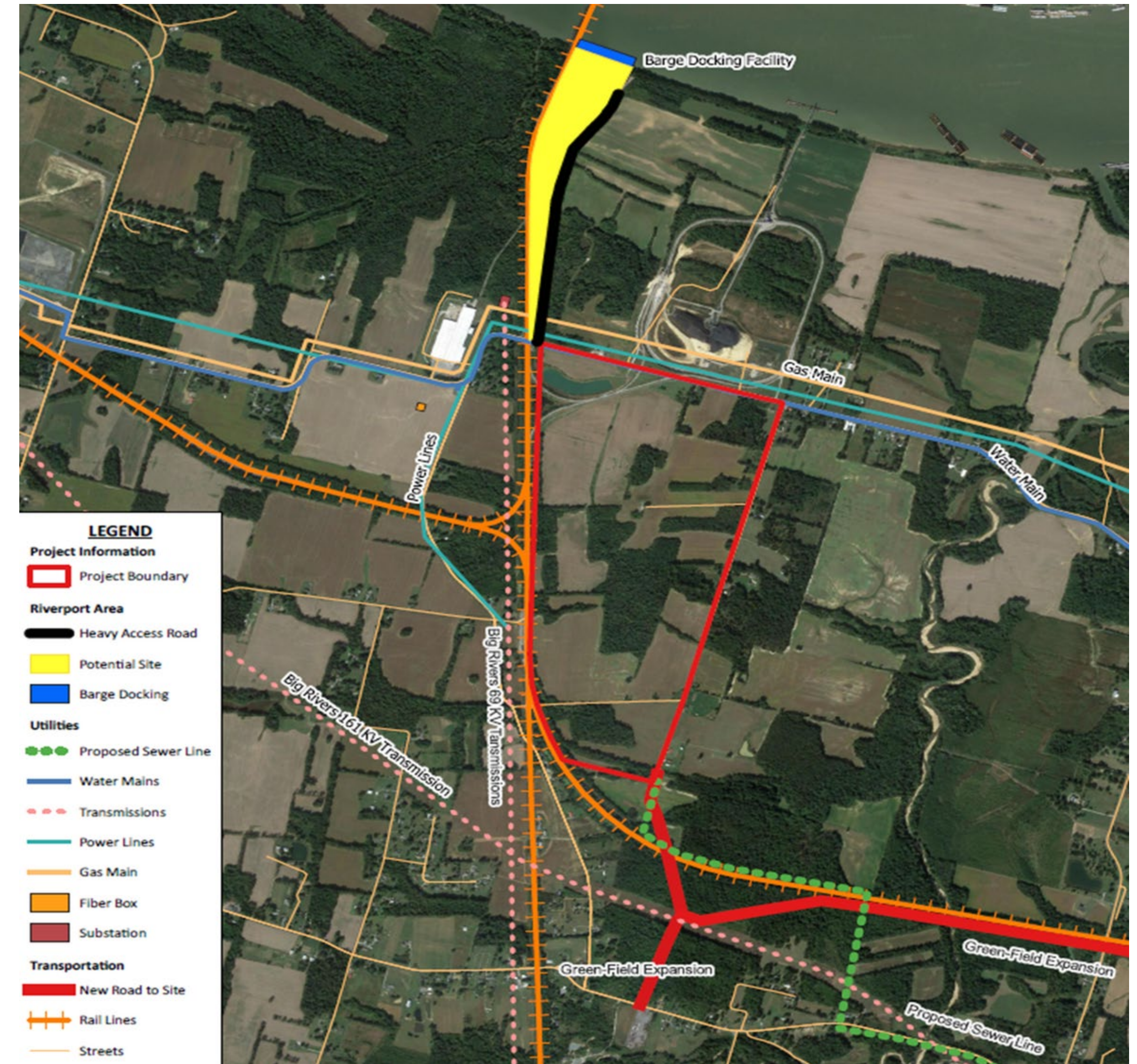
Rare Earth Mineral Recycling

Heavy Industrial Applications



Triple Rail Site / Riverport West

- Own and/or control ~800 Acres
- \$15.5 Million New Road
- \$750,000 Sewer Extensions
- 1,000' of River Frontage
- \$75 Million Preliminary Design Riverport West
- \$3.5 Million For Environmental, Engineering, & Design



Thank You!

