



U.S. DEPARTMENT  
*of* **ENERGY**

Federal Energy  
Management Program

# Aligning Resilience Efforts: Critical Infrastructure Providers and Agencies

---

T01-S05, August 6th, 2025

**FEMP Summer CAMP** (Courses Aligned with Mission Priorities)



# Alex Young

Senior Manager of Defense Customer Solutions  
Edison Electric Institute

# Agenda

- Session Learning Objectives
- Enabling Critical Infrastructure
- Successful Federal-Utility Partnerships
- Addressing Reliability, Resilience, and Growth
- Leveraging Utility Capabilities
- Conclusion and Q&A

# Session Learning Outcomes

1. Identify opportunities for federal sites and utilities to collaborate on mutual resilience goals.
2. Examine how utilities address reliability, resilience, and growth in their operations.
3. Recognize tools such as performance contracts, utility collaborations, and resilience tariffs to enhance site resilience.
4. Recognize the role of partnerships in energy resilience planning, project development, and implementation.



# Shawn Bennett

Director of Origination

US Army Office of Energy Initiatives

# Installation Energy Landscape

*"The homeland is no longer a sanctuary" - 2018 National Defense Strategy*



The Army's end state is to have **modern, resilient, efficient installations** for strategic readiness and the surrounding communities

Installations must serve as self-sufficient "islands", **capable of powering the mission without reliance on commercial grids**

## Army Microgrid Portfolio

- **32** operational across 25 installations
- **20** under construction
- **47** in the design phase
- **50+** in the early-stage planning



# Creative Acquisitions



The **Army Office of Energy Initiatives (OEI)** serves as a centralized program office supporting the development of resilient energy capabilities **at low to no cost to the Army** (Army directive 2014-22)

## AUTHORITIES

### Direct Private Investment

- Outgrants
- Power Purchase Agreements (PPA)
- GSA Areawide authorizations

### Third-Party Financing

- Utilities Privatization (UP)
- Energy Savings Performance Contract (ESPC)
- Utility Energy Service Contracts (UESC)

### Appropriated Funding

- Energy Resilience & Conservation Investment Program (ERCIP)
- Resilient Energy Funding for Readiness and Modernization (REFoRM) savings program
- Military Construction (MILCON) programs

# Utility Partnerships

The Army works with utilities and other private investors to lease out its underutilized land for energy resilience solutions.

- Allows Army to fund energy projects, reduce costs, and explore new technologies
- Approaching **\$1.5 BN** in private investments







# Omar Faris

Senior Advisor, Federal Government  
Southern California Edison

# Southern California Edison – Who We Are

## Who We Are

- One of the nation's largest electric utilities
- Headquarters in Rosemead, California
- More than 130 years of history

## Who We Serve

- 50,000 square miles of SCE service area across Central, Coastal and Southern California
- 15 million residents in service territory
- 5 million customer accounts



# Grid Hardening Efforts and Wildfire Mitigation

- SCE has completed 88% of planned grid hardening work so far.
- Since 2018, SCE has installed covered conductor on approximately 6,450 miles of power lines; our goal is to complete hardening of up to 8,250 overhead miles in high-fire-risk areas by the end of 2028.
- SCE has about 7,400 miles of power lines underground to date and will begin undergrounding at least an additional 600 miles in targeted areas through 2028.
- Last year, SCE spent \$1.8B to mitigate wildfire risk, including hardening our electric grid.
- Grid hardening includes installation of:
  - Covered conductor, fire-resistant poles and undergrounding power lines.
  - Devices to segment or isolate portions of circuits to minimize the number of customers impacted during a Public Safety Power Shutoff event.
  - Fast-acting fuses to interrupt electrical current more quickly when there's a fault

# Customer Demand Surge and Grid Build Out

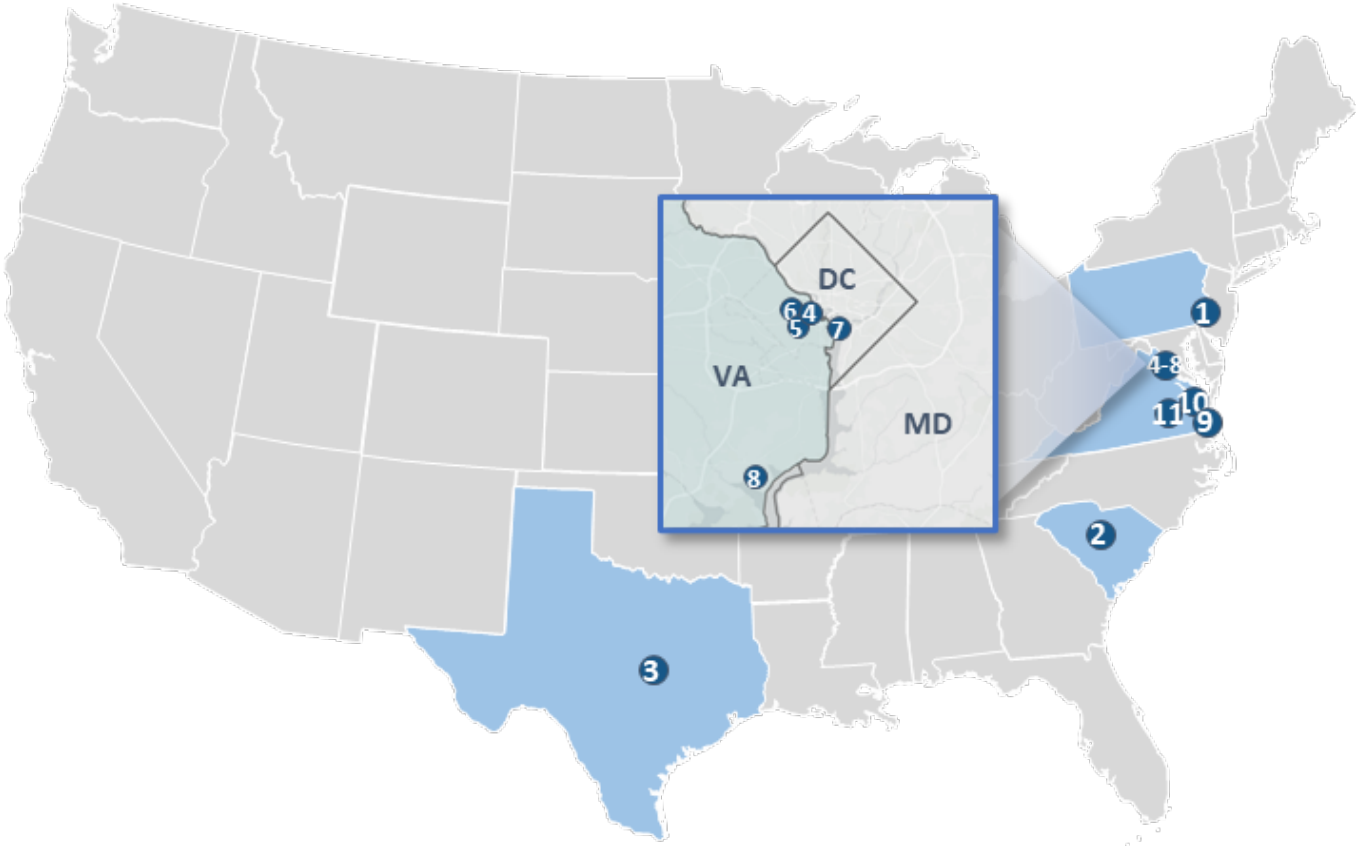
- SCE forecasts a 5.6 gigawatt increase in demand over the next 10 years – that's similar to adding a state the size of Idaho (5.3 GW) or Maine (5.2 GW) to our existing electric grid.
- We see a surge in growth materialize with the reshoring of manufacturing and expansion of existing manufacturing facilities, new data centers and the rapid growth of AI technologies.
- Forecasted growth in demand means SCE must invest now to build distribution grid capacity, as many projects have long lead times, often five years or longer.
- Grid buildout includes:
  - Construction of new distribution circuits and extensions of existing circuits.
  - Advanced reconductoring to add capacity to existing circuits.
  - Configurations to provide backup power during planned and unplanned outages.
  - Sensors and computing power near the grid edge to help with situational awareness, automation and adaptability.



# Eric Tatum

Director – Federal Energy Solutions  
Dominion Energy

# Utilities Privatization



Pennsylvania	1	Philadelphia Navy Yard	
South Carolina	2	Fort Jackson	
Texas	3	Fort Hood	
Virginia	4	Arlington National Cemetery	
	5	Henderson Hall	
	6	Fort Myer	
	7	Fort McNair	
	8	Fort Belvoir	
	9	Fort Story	
	10	Fort Eustis	
	11	Fort Lee	



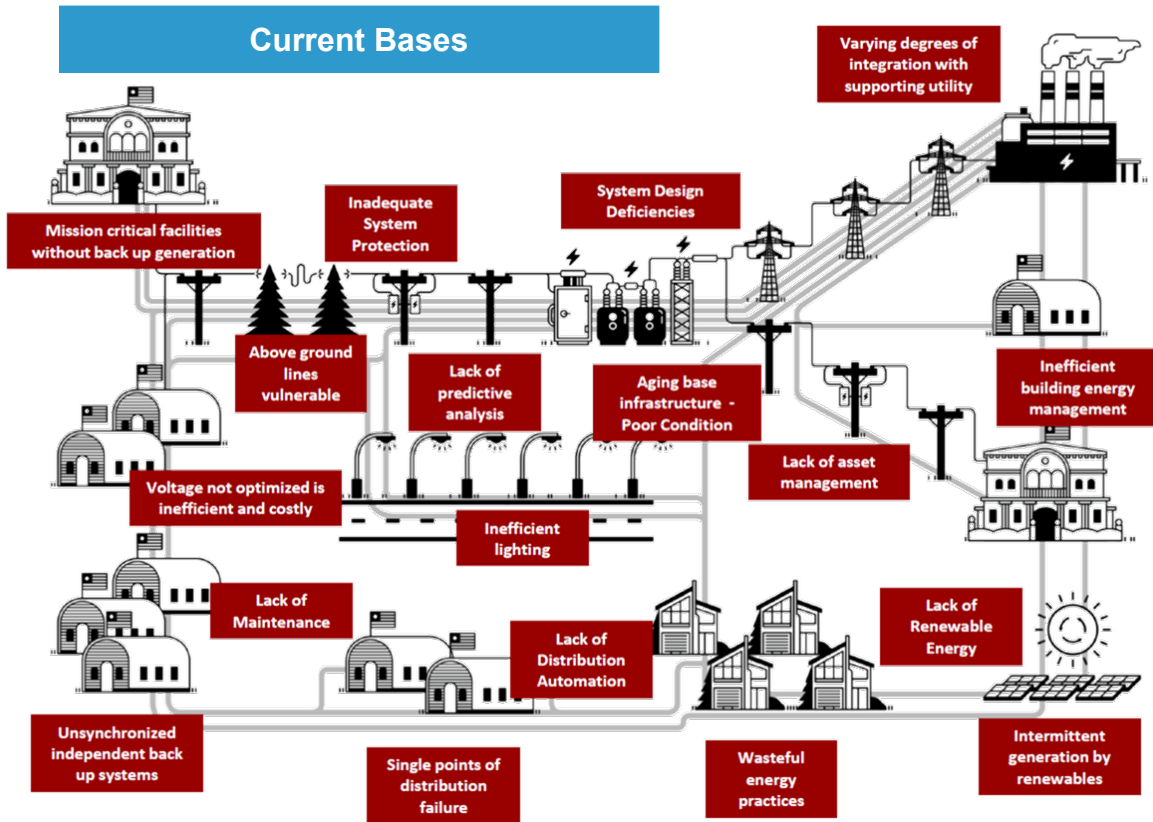
# The Base Of Tomorrow

**Base of Tomorrow®** is an efficient installation that achieves a *Reliable*, *Resilient*, and *Sustainable* energy supply from power generator to end user by incorporating a diverse set of energy solutions in an integrated and optimal way

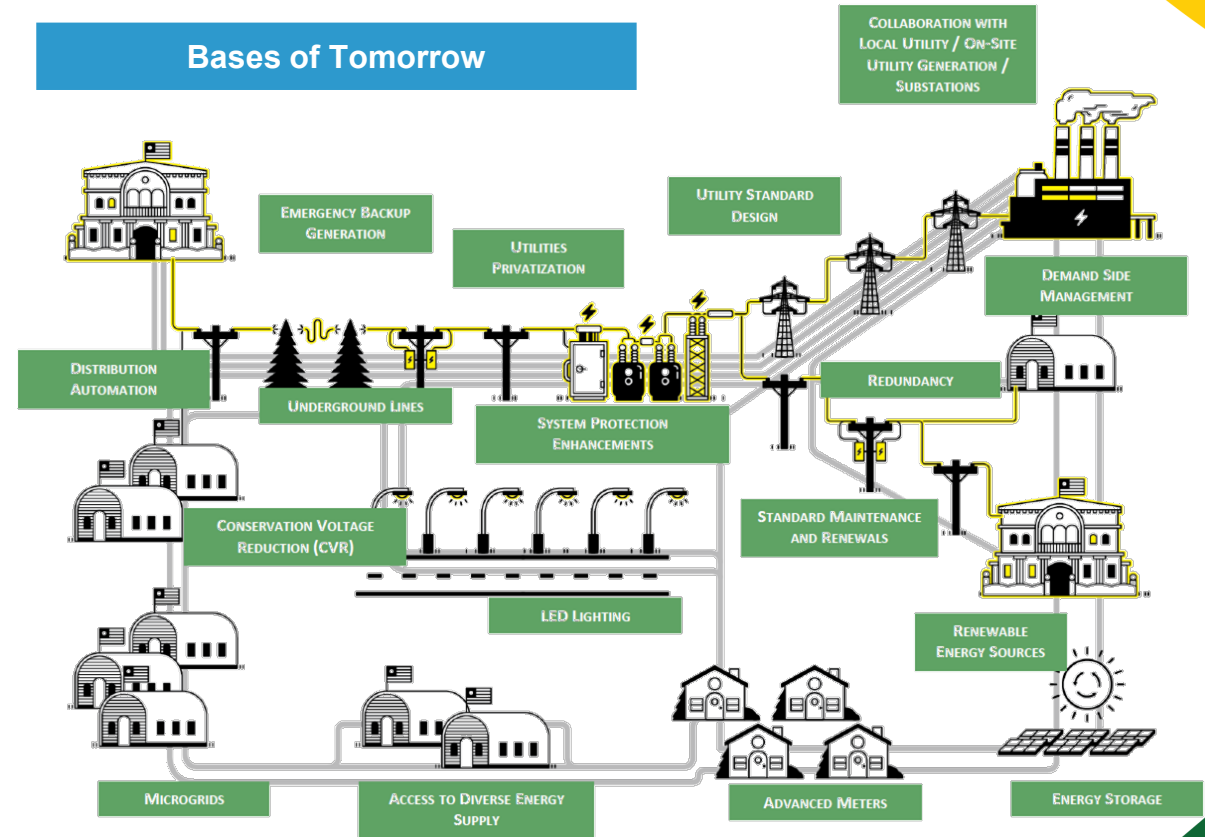


# Key Infrastructure Supporting Critical Military Installations

## Current Bases



## Bases of Tomorrow



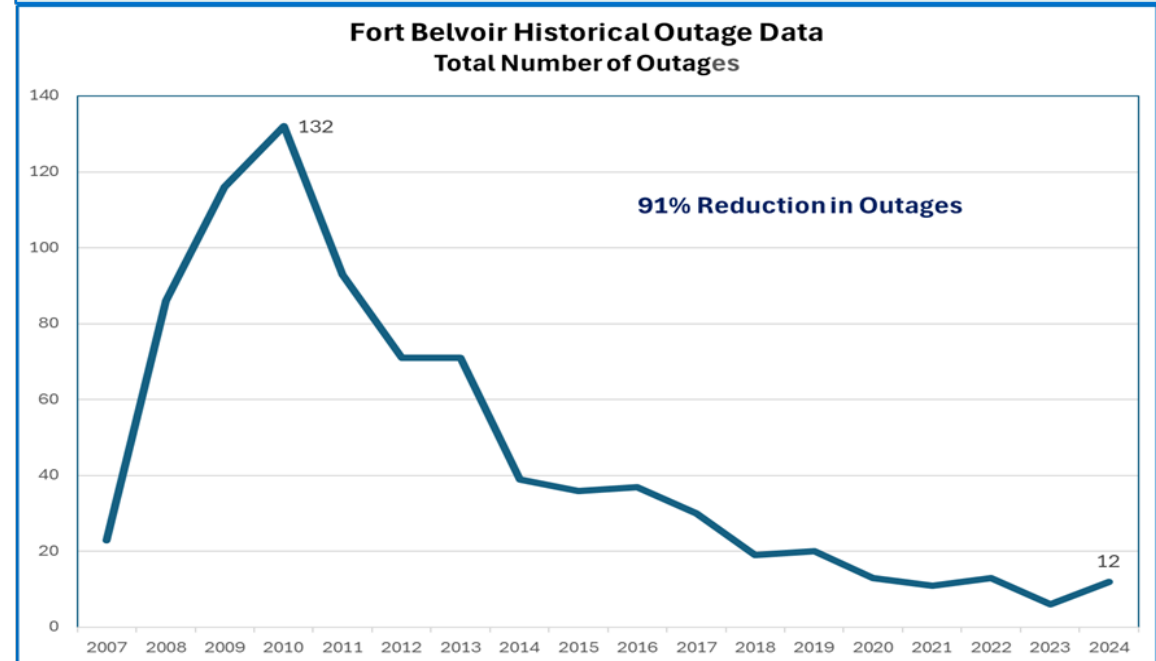
Dominion's *Base of Tomorrow* has achieved remarkable levels of energy reliability, resilience and cost-effectiveness

# Utilities Privatization

## Steady and Pronounced Reduction in System Outages

Installation	Peak # of Outages Annual (historical)	2024 Total # of Outages	Improvement under UP Program
Ft. Belvoir	132	12	<b>91%</b>
Ft. Eustis	89	2	<b>98%</b>
Ft. Story	49	1	<b>98%</b>
Ft. Lee	45	4	<b>91%</b>
Ft. McNair	6	0	<b>100%</b>
Ft. Myer/HH/ANC	14	2	<b>86%</b>
Ft. Hood	236	113	<b>52%*</b>
Ft. Jackson	54	20	<b>63%*</b>

## Representative Example of System Improvement Progression



\*Ft. Hood and Ft. Jackson programs are more recent (commenced 2017 and 2019, respectively) and are in the stabilize/improve phases. Both installations are on the same improvement curve reflected in the Ft. Belvoir diagram above.

# Questions?

---



U.S. DEPARTMENT  
*of* **ENERGY**

Federal Energy  
Management Program

**FEMP Summer Workshops**

# This Training Is Accredited

How to obtain your CEUs:

1. Log in to <https://edu.wbdg.org/> using your WBDG credentials
  - The assessment and evaluation will be made available to attendees at 8:00am ET on Monday, August 11<sup>th</sup>
  - The assessment and evaluation will close on September 22<sup>nd</sup>
2. In the list of trainings you attended, click on the Visit link by the course you wish to complete
  - If the course you're looking for is not listed, click on My Account in the top right menu
  - If you still can't find your course, contact the WBDG support team to check your eligibility
3. Complete the assessment with a score of 80% or above
4. Upon passing the assessment, click the Post-Evaluation Survey button
5. Complete and submit the evaluation
6. Click Download Your Certificate to generate your certificate of completion, which can be downloaded for your records

Questions or issues? Contact WBDG Support at [wbdg@nibs.org](mailto:wbdg@nibs.org).



## What's an IACET CEU?

A continuing education unit (CEU) from the International Association for Continuing Education and Training (IACET) equals 10 hours of learning in an approved program for licensed or certified professionals.

# Thank You

---



U.S. DEPARTMENT  
*of* **ENERGY**

Federal Energy  
Management Program

**FEMP Summer CAMP** (Courses Aligned with Mission Priorities)



# Connect With FEMP!

Stay connected with FEMP by subscribing to newsletters, following along on LinkedIn, and submitting questions to the Technical Assistance Portal.



## Ask Questions

Visit FEMP's [Technical Assistance Portal](#).



## Subscribe

Receive periodic emails to [stay informed](#).



## Find Trainings

Explore the [FEMP Training Catalog](#) to find live and on-demand trainings and events.



## Follow FEMP

[Follow FEMP on LinkedIn](#) for of-the-moment news.