

## Public Input Encouraged!

Public comments are sought to define the scope and alternatives for an Environmental Assessment of a proposed wind energy facility in Campbell County, South Dakota. The proposed project, to be called Campbell County Wind Farm 2, would involve construction of a 98.9 megawatt wind farm generating facility that includes a total of 29 turbines and associated pads. Other project components would include an underground power collection system, a new collector substation, a new overhead transmission line less than 750 feet in distance, access roads, and other ancillary facilities. The project would be located on private land approximately three (3) miles south of Pollock, in Campbell County, South Dakota and proposed to begin construction in 2025.

WAPA will hold a virtual public scoping meeting to provide an opportunity for interested parties to discuss the Project with federal officials and resource specialists, and to submit comments. The virtual meeting will be held on Wednesday, November 2, 2022 from 6:30-8:00 p.m. CST via Zoom. To learn more about this project and to share your ideas, join us at:

Video (preferred):

<https://west-inc.zoom.us/j/88602690297>

Meeting passcode: 642 677

Call in only:

Phone: (+1) 669-900-6833

Webinar ID (access code): 886 0269 0297

*Comments may be submitted in the following ways:*

- By mail to:  
Western Area Power Administration  
6th Floor Attn: Mr. John Russell  
2900 Avenue North  
Billings, MT 59101
- By voicemail to (307) 632-3147
- By email to [NEPA@wapa.gov](mailto:NEPA@wapa.gov)
- By participating in the virtual public scoping meeting, at the link provided above.

Comments should be postmarked no later than December 2, 2022.

# Public input sought on Wind Farm 2 project

Public Input Encouraged!

Public comments are sought to define the scope and alternatives for an Environmental Assessment of a proposed wind energy facility in Campbell County, South Dakota.

The proposed project, to be called Campbell County Wind Farm 2, would involve construction of a 98.9 megawatt wind farm generating facility that includes a total of 29 turbines and associated pads. Other project components would include an underground power collection system, a new collector substation, a new overhead transmission line less than 750 feet in distance, access roads, and other ancillary facilities.

The project would be located on private land approximately three (3) miles south of Pollock, in Campbell County, South Dakota and proposed to begin construction in 2025.

WAPA will hold a virtual public scoping meeting to provide an opportunity for interested parties to discuss the Project with federal officials and resource specialists, and to submit comments.

The virtual meeting will be held on Wednesday, November 2, 2022 from 6:30-8:00 p.m. CST via Zoom. To learn more about this project and to share your ideas, join us at:

Video (preferred): <https://west-inc.zoom.us/j/88602690297>  
Meeting passcode: 642 677  
Call in only: Phone: (+1) 669-900-6833  
Webinar ID (access code): 886 0269 0297

Comments may be submitted in the following ways:

By mail to:  
Western Area Power Administration  
6th Floor Attn: Mr. John Russell  
2900 Avenue North, Billings, MT 59101  
By voicemail to (307) 632-3147  
By email to [NEPA@wapa.gov](mailto:NEPA@wapa.gov)  
By participating in the virtual public scoping meeting, at the link provided above.

Comments should be postmarked no later than December 2, 2022.

Published once at the total approximate cost of \$23.31 and can be viewed free of charge at [www.sdpublicnotices.com](http://www.sdpublicnotices.com)

-102022

**Campbell County Wind Farm 2**  
**Voice Mailbox for Scoping Comments**

**Script:**

Thank you for your interest in the proposed interconnect of ConEdison's Campbell County Wind Farm 2 Project to Western Area Power Administration's federal grid system at the existing Campbell County switchyard. Your comments are important to us and will be accepted through December 2, 2022 for formal consideration in the NEPA process. You may leave your comment anonymously, or provide your name and contact information. To ask a question or request a call back, please provide both your name and telephone number and state that you require a callback. Please leave your comment after the tone. Thank you.

**Logistics:**

Phone number for voice mailbox: 307-632-3147

Both physical phone lines and virtual (i.e. Google Voice) phone lines can be used to leave a message.

WEST will monitor the voice mailbox regularly, but will not be actively answering the phoneline. Messages are automatically converted to an audio file and emailed directly to WEST. WEST will delete messages regularly in the mailbox in order to keep the mailbox open and able to receive new messages. WEST will provide all audio files as well as transcriptions of the messages to WAPA via a client cloud shared drive. As voicemails are saved to the client cloud drive, WEST will notify WAPA of new uploads.

WEST will close the voice mailbox on December 3, 2022.



**Department of Energy**  
Western Area Power Administration  
Upper Great Plains Customer Service Region  
P.O. Box 35800  
Billings, MT 59107-5800

B0401.BL

10/17/22

Dear Customers and Interested Parties:

This letter is to notify you of the proposed Campbell County Wind Farm 2 (Project) and to request your input on the Project. The Project would involve construction of a 98.9 megawatt wind farm generating facility that includes a total of 29 turbines and associated pads. Other Project components would include an underground power collection system, a new collector substation, a new overhead transmission line less than 750 feet in distance, access roads, and other ancillary facilities. The Project would be located on private land approximately three (3) miles south of Pollock, in Campbell County, South Dakota (see enclosed map), and proposed to begin construction in 2025.

The Project would interconnect with Western Area Power Administration's (WAPA) Bismarck to Glenham 230-kV Transmission Line at WAPA's existing Campbell County switchyard. As a result, WAPA will provide federal oversight of the preparation of an Environmental Assessment (EA) under the National Environmental Policy Act (NEPA). The EA will evaluate the environmental effects of the proposed Project on resources such as wetlands, vegetation and wildlife, cultural and recreation resources, as well as other social, economic, and environmental effects.

WAPA is announcing a public scoping period for the Project. The scoping period provides an opportunity for interested parties to identify issues and alternatives that will help WAPA define the scope of the EA.

The public scoping meeting will be held virtually over Zoom on Wednesday, November 2, 2022, from 6:30 to 8:00 p.m. CST. The scoping meeting will be an opportunity for interested parties to discuss the Project with resource specialists and submit comments. To learn more about this project and to share your ideas, join us at:

Video (preferred):

<https://west-inc.zoom.us/j/88602690297>

Meeting passcode: 642 677

Call in only:

Phone: (+1) 669-900-6833

Webinar ID (access code): 886 0269 0297

The public meeting presentations will be recorded and made available for the public on WAPA's website, located at the following address:

<http://www.wapa.gov/regions/UGP/Environment/Pages/Campbell-County-2.aspx>



Comments may be submitted in the following ways:

- By mail to:  
Western Area Power Administration  
6<sup>th</sup> Floor Attn: Mr. John Russell  
2900 4<sup>th</sup> Avenue North  
Billings, MT 59101
- By phone by calling: (307) 632-3147
- By email to [NEPA@wapa.gov](mailto:NEPA@wapa.gov)
- By participating in the virtual public scoping meeting, at link provided above.

For your input to be considered during preparation of the draft EA, WAPA requests comments be postmarked no later than **December 2, 2022**. If you have any questions, or need more information about the Project, please contact WAPA using the methods listed above. Thank you for your time and interest in the Project.

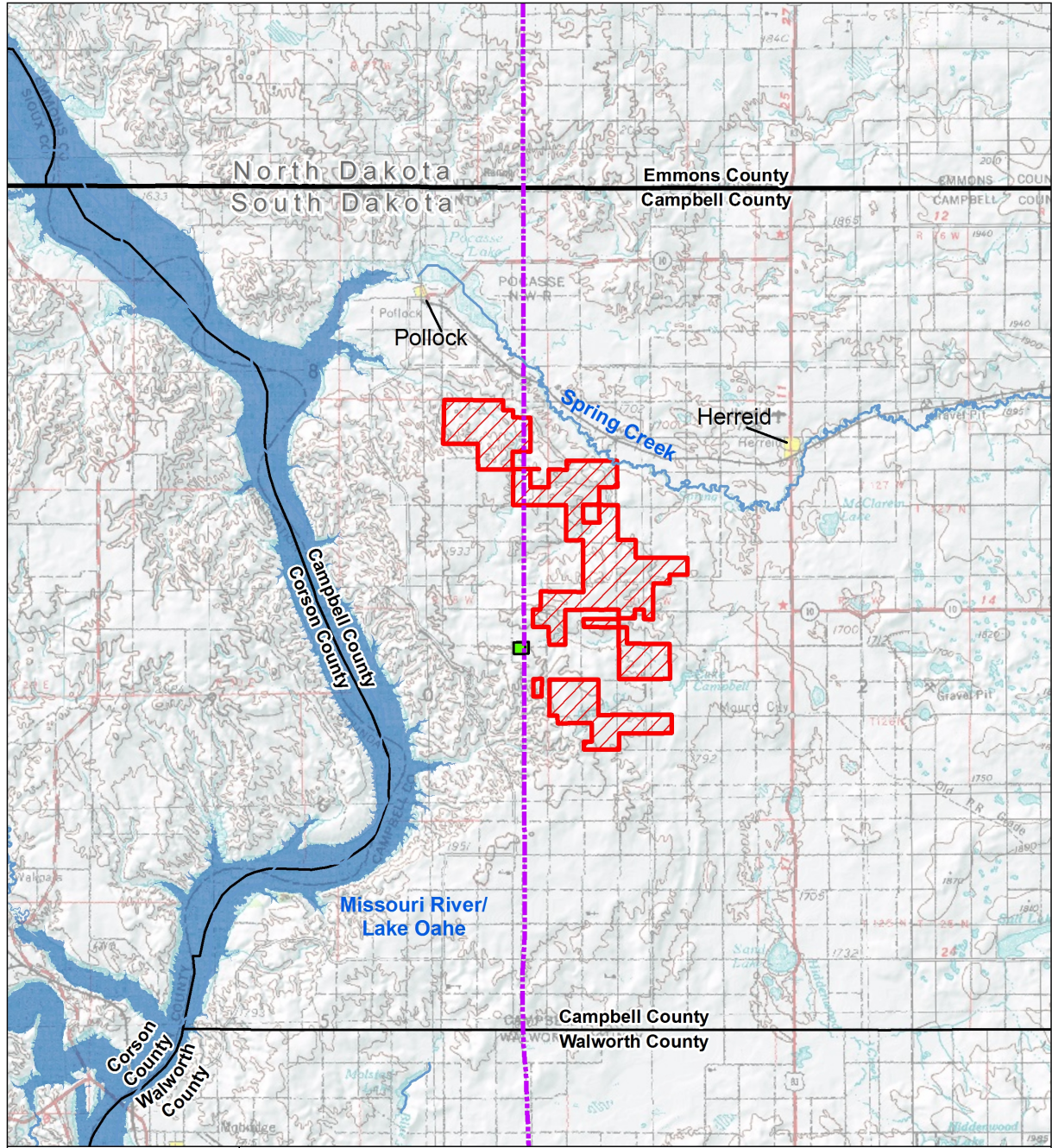
Sincerely,

CHRISTINA  
GOMER

Digitally signed by  
CHRISTINA GOMER  
Date: 2022.10.17  
14:06:39 -06'00'

Christina Gomer  
NEPA Coordinator

Enclosures - 3  
Project Area Map  
Virtual Meeting Instruction Sheet  
Comment Form

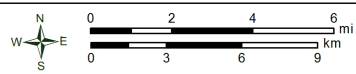


**Campbell County  
Wind Farm 2  
South Dakota**



- Project Area
- Proposed WAPA Interconnect
- County Boundary
- State Boundary

- WAPA Bismarck-Glenham 230kV transmission line
- Major Streams/Rivers
- Major Lakes/Reservoirs



Data Source: USA Topo 2021, NHD 2021, US DHS 2021  
Coordinate System: NAD 1983 UTM Zone 14N  
Date: 10/13/2022 Author: GPG



## **Instructions for the Online Virtual Public Scoping Meeting Campbell County Wind Farm 2 Project Environmental Assessment**

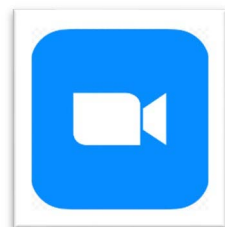
---

Please review the following instructions, tips, and ground rules below in advance of the meeting.

### **Virtual Meeting Instructions:**

Those interested in participating in the virtual meeting can do so in two ways, both of which will provide opportunities to make a public comment:

- Video: Joining by computer, smartphone, or tablet will allow participants to both see and hear the presentation. We encourage users to test the connection prior to the event to ensure best results.
  - For computer users, Google Chrome or Mozilla Firefox gives the best results.
  - Users of other devices will likely need to download the free Zoom app from the Apple App Store or the Google Play Store.
- Audio: Joining by phone will allow participants to hear the presentation but not see it.



### **Public Scoping Meeting**

**6:30 pm – 8:00 pm CST, Wednesday, November 2<sup>nd</sup>, 2022**

Video (preferred):

<https://west-inc.zoom.us/j/88602690297>

Meeting passcode: 642 677

Call in only:

Phone: (+1) 669-900-6833

Webinar ID (access code): 886 0269 0297

### **Virtual Meeting Tips:**

- The meeting materials (presentations and maps) will be available for review after the meeting. These materials can be accessed at:  
<https://www.wapa.gov/regions/UGP/Environment/Pages/Campbell-County-2.aspx>
- Prior to the meeting, access the Zoom link above and download any needed software or click to participate via web browser. This may take a few minutes, so it is best to download software in advance of the meeting.
- To hear audio when connecting through the Zoom link, please make sure the volume on your computer speakers is on and no programs with audio features (e.g., FaceTime, Spotify, Pandora, YouTube, music players) are open that may interfere with the online meeting audio.
- The meeting will be recorded for notetaking purposes.

## Ground Rules:

- Attendees will be muted during the presentation to help minimize sound issues.
- The meeting will begin with introductions and a presentation.
- Following the presentation, attendees can ask questions or submit a formal comment by “raising their hand” to ask a question or comment verbally, or use the Q&A tool for written questions and comments. For those joining by phone only, press \*9 on your phone keypad to raise your hand to be called on to comment verbally.
- If submitting a comment verbally or via chat, WAPA requests that you provide your name and the organization you represent, if applicable.
- Communications from the public regarding this project, including commenters' names, will become part of the public record. If you wish for WAPA to withhold your name and/or other personally identifiable information, please state this prominently at the beginning of your comment. Persons requesting such confidentiality should be aware that, under the Freedom of Information Act, confidentiality may be granted in only very limited circumstances, such as to protect trade secrets.
- Comments submitted anonymously will be accepted and considered.
- Comments posted after the close of a designated comment period (ending December 2, 2022) will be accepted but may not be able to be given full consideration.
- The presentation will be available on the WAPA website if you wish to view it a second time: <https://www.wapa.gov/regions/UGP/Environment/Pages/Campbell-County-2.aspx>





# Western Area Power Administration

## Campbell County Wind Farm 2 Public Scoping Meeting

Wednesday, November 2, 2022

6:30 pm to 8:00 pm CST

Zoom: <https://west-inc.zoom.us/j/88602690297>  
Meeting passcode: 642 677

Thank you for your interest in the Campbell County Wind Farm 2 Project. Please complete the appropriate sections of this form to be included on the project mailing list and/or to provide comments. Comments can be submitted:

- At the scoping meeting
- By phone to (307) 632-3147
- E-mailed to [nepa@wapa.gov](mailto:nepa@wapa.gov)
- Mailed to WAPA at the address provided

Your comments are important to us and will be accepted through December 2, 2022 for formal consideration in the NEPA process. WAPA will consider late comments to the extent practicable. Any personally identifiable information, such as names, addresses, and email addresses included in a comment may be made available to the public. WAPA will accept comments submitted anonymously.

### ***Please Print Contact Information Below:***

Name:

Organization:

E-mail Address (optional):

Daytime Phone No. (optional):

Street Address:

City / State / Zip Code:

### ***Please Share Comments, Questions, or Concerns Below (continue on separate sheet if necessary):***

---

---

---

---

---

---

---

---

Thank you for your time and interest in the project.



-----  
**Please fold in thirds and tape**

Place  
postage  
here

Western Area Power Administration  
6<sup>th</sup> Floor Attn: Mr. John Russell  
2900 4<sup>th</sup> Avenue North  
Billings, MT 59101

-----



**Department of Energy**  
Western Area Power Administration  
Upper Great Plains Customer Service Region  
P.O. Box 35800  
Billings, MT 59107-5800

B0401.BL

10/17/22

Dear Agencies and Interested Parties:

This letter is to notify you of the proposed Campbell County Wind Farm 2 (Project) and to request your input on the Project. The Project would involve construction of a 98.9 megawatt wind farm generating facility that includes up to a total of 29 turbines and associated pads. Other Project components would include an underground power collection system, a new collector substation, a new overhead transmission line less than 750 feet in distance, access roads, and other ancillary facilities. The Project would be located on private land approximately three (3) miles south of Pollock, in Campbell County, South Dakota (see enclosed map), and proposed to begin construction in 2025.

The Project would interconnect with Western Area Power Administration's (WAPA) Bismarck to Glenham 230-kV Transmission Line at WAPA's existing Campbell County switchyard. As a result, WAPA will provide federal oversight of the preparation of an Environmental Assessment (EA) under the National Environmental Policy Act (NEPA). The EA will evaluate the environmental effects of the proposed Project on resources such as wetlands, vegetation and wildlife, cultural and recreation resources, as well as other social, economic, and environmental effects.

WAPA is announcing a public scoping period for the Project. The scoping period provides an opportunity for interested parties to identify issues and alternatives that will help WAPA define the scope of the EA.

The agency scoping meeting will be held virtually over Zoom on Wednesday, November 2, 2022, from 10:00 a.m. to 12:00 p.m. CST. The meeting will be an opportunity for interested parties to discuss the Project with resource specialists and submit comments. Join the meeting at:

Video (preferred):

<https://west-inc.zoom.us/j/7829258807>

Meeting passcode: 782 925 8807

Call in only:

Phone: (+1) 669-900-6833

Webinar ID (access code): 782 925 8807

Additionally, a public scoping meeting will be held virtually over Zoom on Wednesday, November 2, 2022, from 6:30 to 8:00 p.m. CST. Agencies are invited to attend one or both meetings. Join the public scoping meeting at:

Video (preferred):

<https://west-inc.zoom.us/j/88602690297>

Meeting passcode: 642 677

Call in only:

Phone: (+1) 669-900-6833

Webinar ID (access code): 886 0269 0297

The public meeting presentations will be recorded and made available for the public on WAPA's website, located at the following address:

<http://www.wapa.gov/regions/UGP/Environment/Pages/Campbell-County-2.aspx>

Comments may be submitted in the following ways:

- By mail to:  
Western Area Power Administration  
6<sup>th</sup> Floor Attn: Mr. John Russell  
2900 4<sup>th</sup> Avenue North  
Billings, MT 59101
- By phone by calling: (307) 632-3147
- By email to [NEPA@wapa.gov](mailto:NEPA@wapa.gov)
- By participating in the scoping meetings, at the links provided above.

For your input to be considered during preparation of the draft EA, WAPA requests comments be postmarked no later than **December 2, 2022**. If you have any questions, or need more information about the Project, please contact WAPA using the methods listed above. Thank you for your time and interest in the project.

Sincerely,

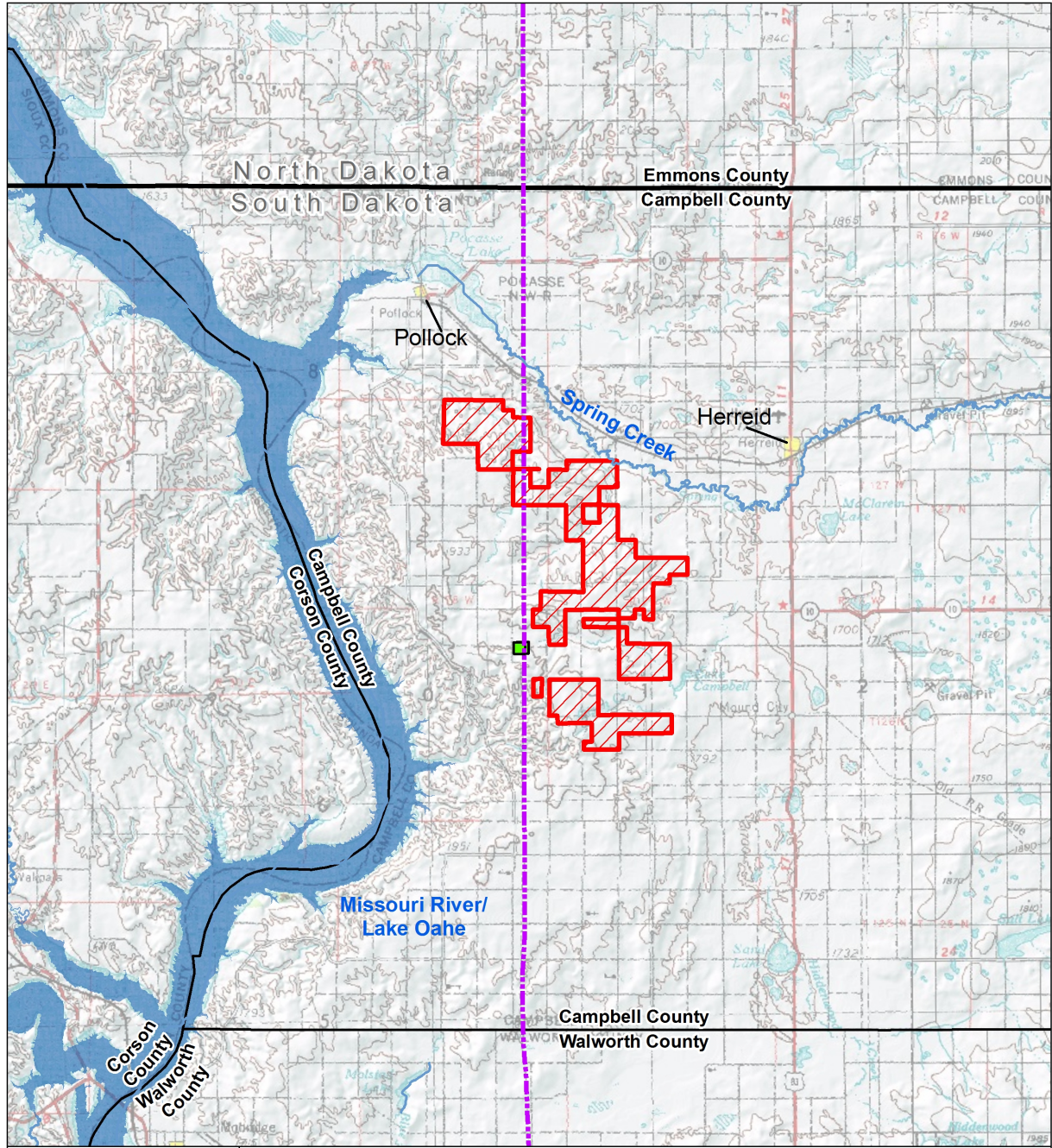
CHRISTINA  
GOMER

Digitally signed by  
CHRISTINA GOMER  
Date: 2022.10.17  
14:05:51 -06'00'

Christina Gomer  
NEPA Coordinator

Enclosures - 3  
Project Area Map  
Virtual Meeting Instruction Sheet  
Comment Form



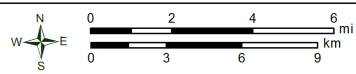


**Campbell County  
Wind Farm 2  
South Dakota**



- Project Area
- Proposed WAPA Interconnect
- County Boundary
- State Boundary

- WAPA Bismarck-Glenham 230kV transmission line
- Major Streams/Rivers
- Major Lakes/Reservoirs



Data Source: USA Topo 2021, NHD 2021, US DHS 2021  
Coordinate System: NAD 1983 UTM Zone 14N  
Date: 10/13/2022 Author: GPG



## **Instructions for the Online Virtual Public Scoping Meeting Campbell County Wind Farm 2 Project Environmental Assessment**

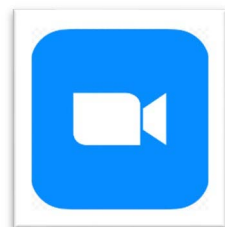
---

Please review the following instructions, tips, and ground rules below in advance of the meeting.

### **Virtual Meeting Instructions:**

Those interested in participating in the virtual meeting can do so in two ways, both of which will provide opportunities to make a public comment:

- Video: Joining by computer, smartphone, or tablet will allow participants to both see and hear the presentation. We encourage users to test the connection prior to the event to ensure best results.
  - For computer users, Google Chrome or Mozilla Firefox gives the best results.
  - Users of other devices will likely need to download the free Zoom app from the Apple App Store or the Google Play Store.
- Audio: Joining by phone will allow participants to hear the presentation but not see it.



### **Public Scoping Meeting**

**6:30 pm – 8:00 pm CST, Wednesday, November 2<sup>nd</sup>, 2022**

Video (preferred):

<https://west-inc.zoom.us/j/88602690297>

Meeting passcode: 642 677

Call in only:

Phone: (+1) 669-900-6833

Webinar ID (access code): 886 0269 0297

### **Virtual Meeting Tips:**

- The meeting materials (presentations and maps) will be available for review after the meeting. These materials can be accessed at:  
<https://www.wapa.gov/regions/UGP/Environment/Pages/Campbell-County-2.aspx>
- Prior to the meeting, access the Zoom link above and download any needed software or click to participate via web browser. This may take a few minutes, so it is best to download software in advance of the meeting.
- To hear audio when connecting through the Zoom link, please make sure the volume on your computer speakers is on and no programs with audio features (e.g., FaceTime, Spotify, Pandora, YouTube, music players) are open that may interfere with the online meeting audio.
- The meeting will be recorded for notetaking purposes.

## Ground Rules:

- Attendees will be muted during the presentation to help minimize sound issues.
- The meeting will begin with introductions and a presentation.
- Following the presentation, attendees can ask questions or submit a formal comment by “raising their hand” to ask a question or comment verbally, or use the Q&A tool for written questions and comments. For those joining by phone only, press \*9 on your phone keypad to raise your hand to be called on to comment verbally.
- If submitting a comment verbally or via chat, WAPA requests that you provide your name and the organization you represent, if applicable.
- Communications from the public regarding this project, including commenters' names, will become part of the public record. If you wish for WAPA to withhold your name and/or other personally identifiable information, please state this prominently at the beginning of your comment. Persons requesting such confidentiality should be aware that, under the Freedom of Information Act, confidentiality may be granted in only very limited circumstances, such as to protect trade secrets.
- Comments submitted anonymously will be accepted and considered.
- Comments posted after the close of a designated comment period (ending December 2, 2022) will be accepted but may not be able to be given full consideration.
- The presentation will be available on the WAPA website if you wish to view it a second time: <https://www.wapa.gov/regions/UGP/Environment/Pages/Campbell-County-2.aspx>



# Western Area Power Administration

## Campbell County Wind Farm 2 Public Scoping Meeting

Wednesday, November 2, 2022

6:30 pm to 8:00 pm CST

Zoom: <https://west-inc.zoom.us/j/88602690297>  
Meeting passcode: 642 677

Thank you for your interest in the Campbell County Wind Farm 2 Project. Please complete the appropriate sections of this form to be included on the project mailing list and/or to provide comments. Comments can be submitted:

- At the scoping meeting
- By phone to (307) 632-3147
- E-mailed to [nepa@wapa.gov](mailto:nepa@wapa.gov)
- Mailed to WAPA at the address provided

Your comments are important to us and will be accepted through December 2, 2022 for formal consideration in the NEPA process. WAPA will consider late comments to the extent practicable. Any personally identifiable information, such as names, addresses, and email addresses included in a comment may be made available to the public. WAPA will accept comments submitted anonymously.

### ***Please Print Contact Information Below:***

Name:

Organization:

E-mail Address (optional):

Daytime Phone No. (optional):

Street Address:

City / State / Zip Code:

### ***Please Share Comments, Questions, or Concerns Below (continue on separate sheet if necessary):***

---

---

---

---

---

---

---

---

Thank you for your time and interest in the project.



-----  
**Please fold in thirds and tape**

Place  
postage  
here

Western Area Power Administration  
6<sup>th</sup> Floor Attn: Mr. John Russell  
2900 4<sup>th</sup> Avenue North  
Billings, MT 59101

-----

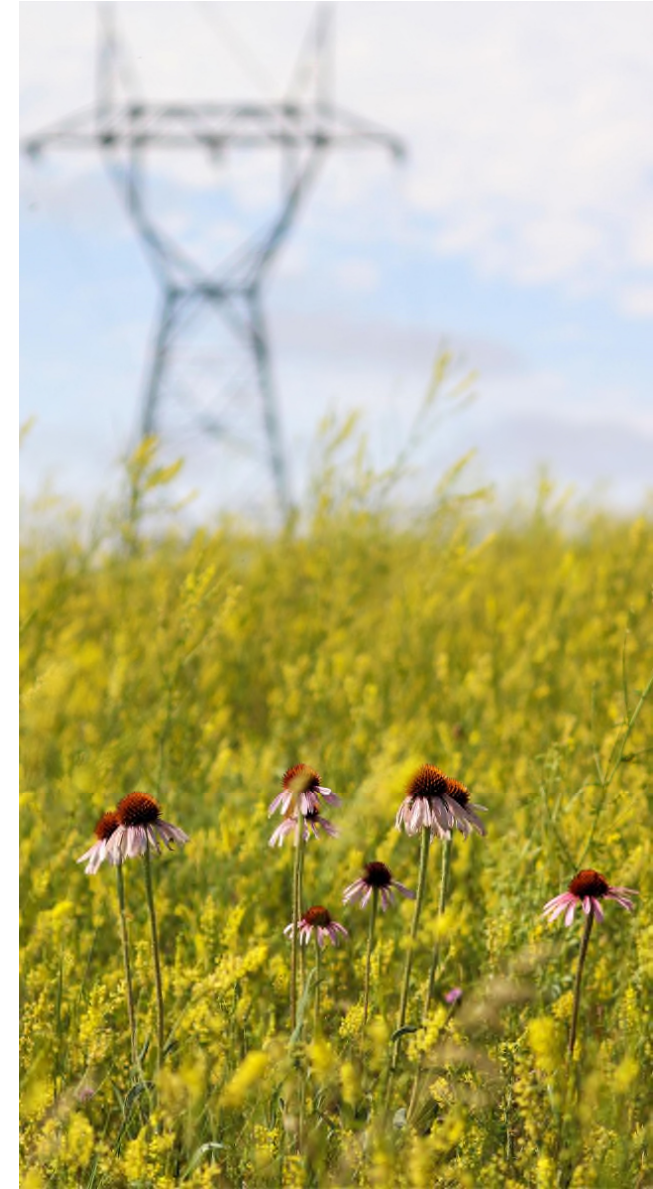


# Campbell County 2 Wind Farm Public Scoping Meeting How to Comment

- Telephone **(307) 632-3147** to leave a voicemail
- Email to [nepa@wapa.gov](mailto:nepa@wapa.gov)
- Mail to:  
Western Area Power Administration  
6<sup>th</sup> Floor Attn: Mr. John Russell  
2900 4th Avenue North  
Billings, MT 59101
- Via the scoping meeting (will be recorded)
  - Verbal
  - Q&A in Zoom



**Postmarked by Friday, December 2, 2022**





# Campbell County Wind Farm 2 Project

Public Scoping Meeting

Western Area Power Administration (WAPA)

November 2, 2022



# Welcome

- Logistics and introductions
- Presentations by WAPA, Applicant, and 3<sup>rd</sup> Party Consultant
- Question/answer and comment session
- Meeting wrap-up and next steps

Project website:

<https://www.wapa.gov/regions/UGP/Environment/Pages/Campbell-County-2.aspx>





# Zoom Overview



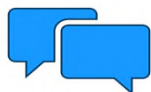
Webinar is being recorded



Microphones are muted



Raise hand to be unmuted and speak after the presentation



May also submit questions via Q&A during the presentation



Q&A



Chat



Raise Hand



Leave Webinar



Project website: <https://www.wapa.gov/regions/UGP/Environment/Pages/Campbell-County-2.aspx>

# Introductions

- WAPA
  - John Russell, Environmental Manager
  - Staffan Peterson, Archaeologist
  - Brian Pauly, Biologist
- ConEdison
  - Sue Hansen, Project Developer
  - John Oldi, Environmental Programs Manager
  - Larry Folks, Director – Project Development
  - Tom Lasker, Director – Construction Team
  - Ben Khali, Manager – Construction Team
  - Tyler Juhl, O&M Regional Manager, Midwest



# Introductions (cont'd)

- Western EcoSystems Technology (WEST)
  - Andrew Sullivan, Project Manager
  - Martin Piorkowski, Wildlife Biologist
  - Caroline Brown, Environmental Planner
  - Casi Lathan, Meeting Host



# Purpose: Why are we here?

- ConEdison proposes to construct the Campbell County Wind Farm 2 (Project).
- The Project has requested to interconnect its wind facility with WAPA's federal grid system at the Bismarck to Glenham 230-kilovolt (kV) Transmission Line via the existing Campbell County switchyard.
- WAPA's decision to grant or deny the interconnection request is a Federal Action, which triggers several environmental laws.



# The Federal Action: Preliminary

Decide whether to grant or deny the interconnection request



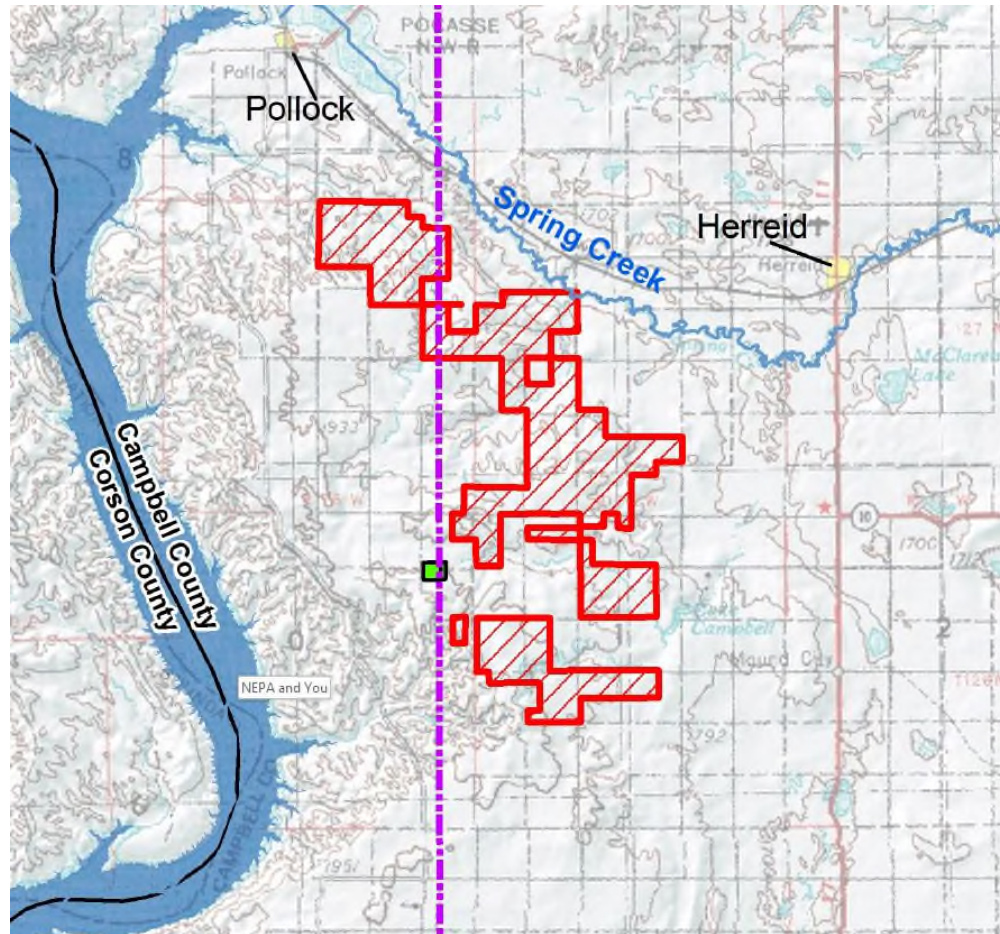
- Allow interconnection via a 750-foot 230-kV transmission line to the Campbell County Switchyard, then to the Bismarck to Glenham 230kV transmission line.



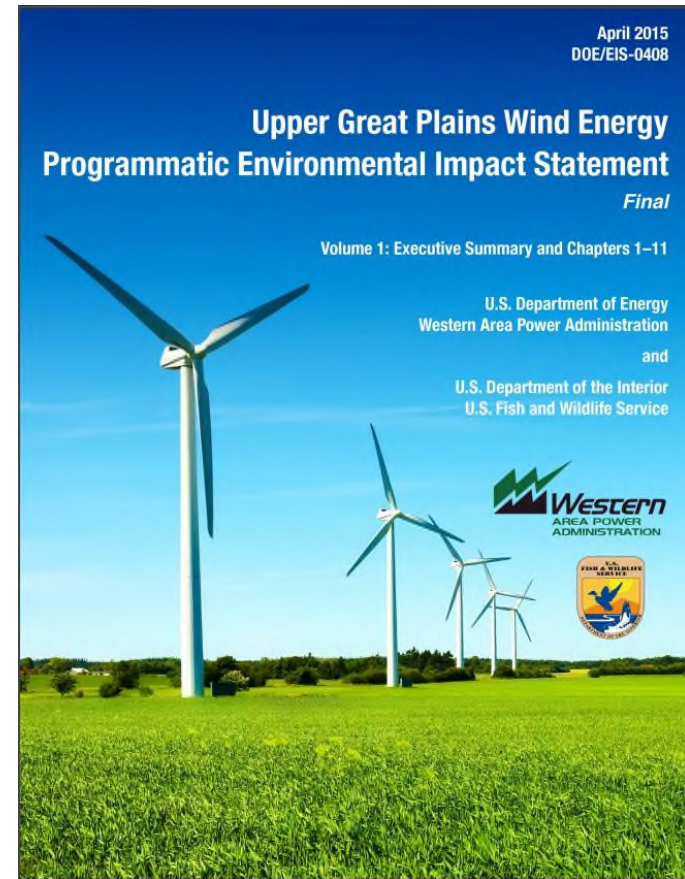
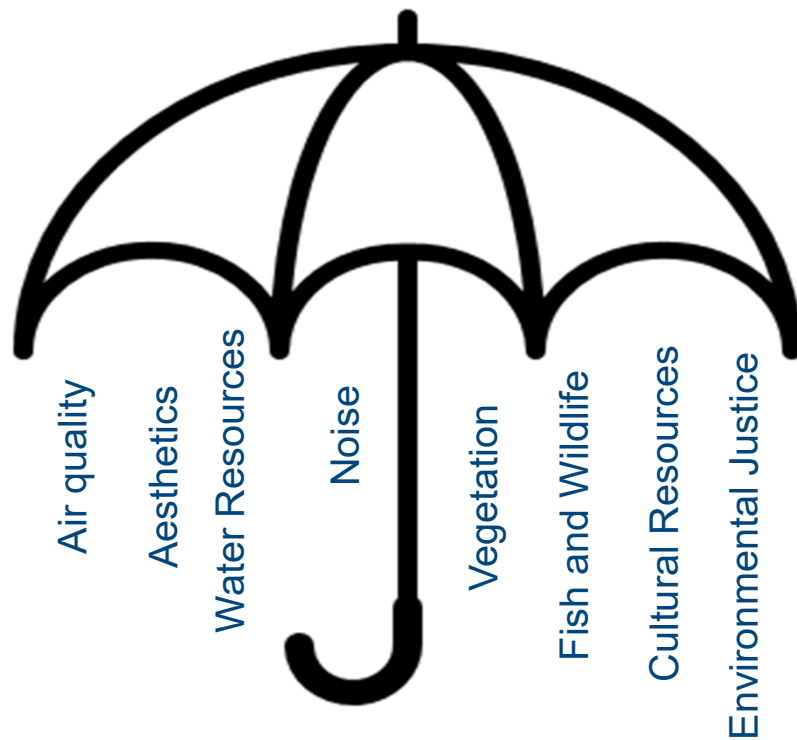
- The Campbell County Wind Farm 2, gen-tie line, and other ancillary facilities would not be constructed unless another interconnection point is found.



# Project Overview

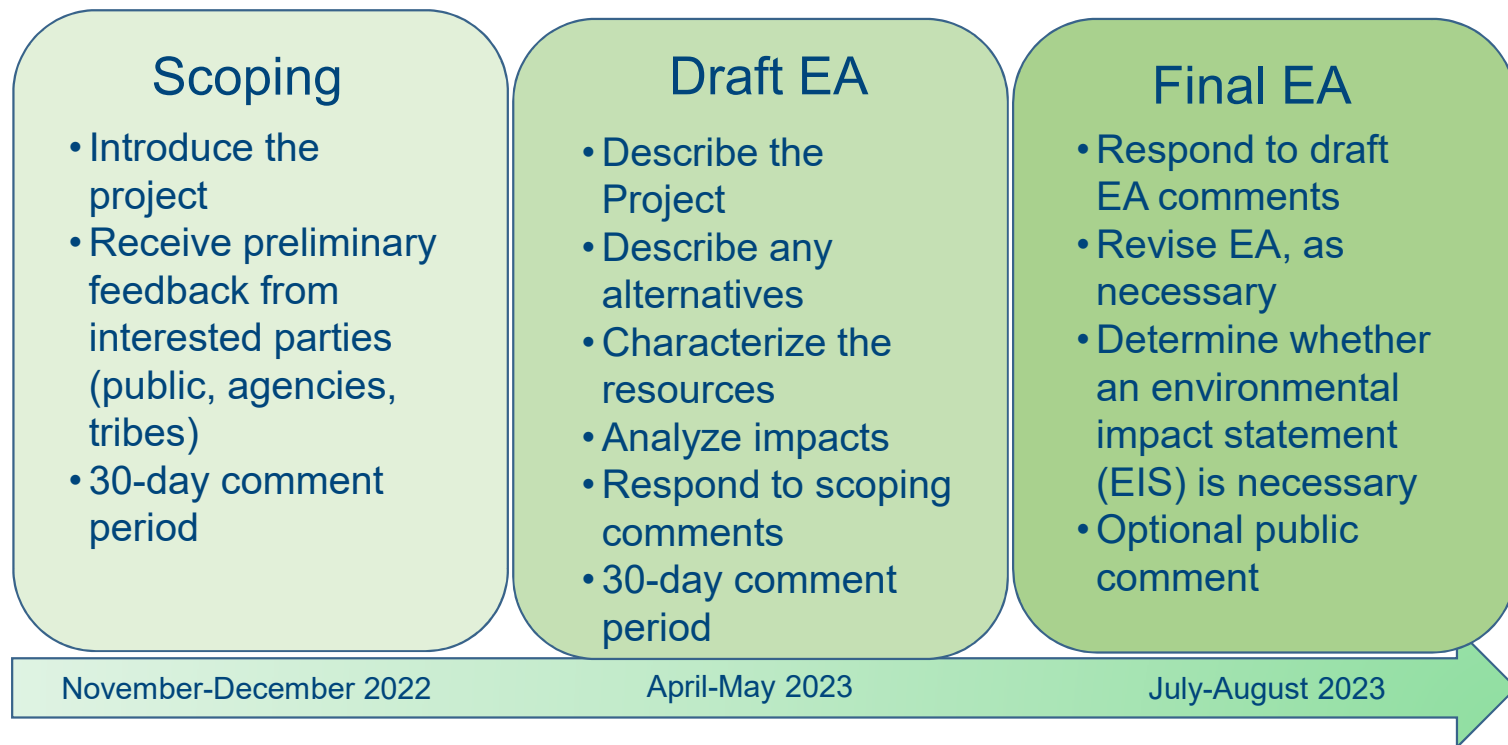


# NEPA and You





# Tiered Environmental Assessment (EA) Process





# Scoping

**Purpose:** Introduce the Interconnection Project; obtain input on any concerns or issues with the Interconnection Project; help determine the range of alternatives; help determine the resources to be evaluated in the EA.

More helpful comments:	Less helpful comments:
Be specific: what are your concerns with the Project?	Give a general thumbs-up or thumbs-down on the project.
Are there alternatives that WAPA should be considering? State them.	Make statements like “protect the water!” or “vote no!”
Provide copies or links to any relevant sources or studies that you are aware of.	Send links or bulks of copied information without an explanation of context



# Cultural Resources and State and Tribal Consultation

- A cultural resource inventory will be conducted in 2023, which will include a desktop assessment and field survey
- Federal undertaking to comply with National Historic Preservation Act - Section 106
- WAPA consulting with 11 tribes and the South Dakota State Historic Preservation Office
- Study the potential effects of the project on any historic properties present including archaeology, Traditional Cultural Properties, historic architecture
- Ground disturbance and visual/auditory potential effects considered
- WAPA to seek comment from SHPO, Tribes, and consulting parties



## About ConEdison

---

ConEdison Development, a ConEdison Clean Energy Business, is a New York renewable energy development and operations company specializing in Wind, Solar and Battery Storage.

This year ConEdison's Clean Energy Businesses celebrated their 25<sup>th</sup> Anniversary.

Con Edison Development offers a range of services to make wind energy projects a success. These include:

- Project development
- Engineering and construction management
- Operations and maintenance

Currently we have several operating wind farms located within these upper Midwest states:

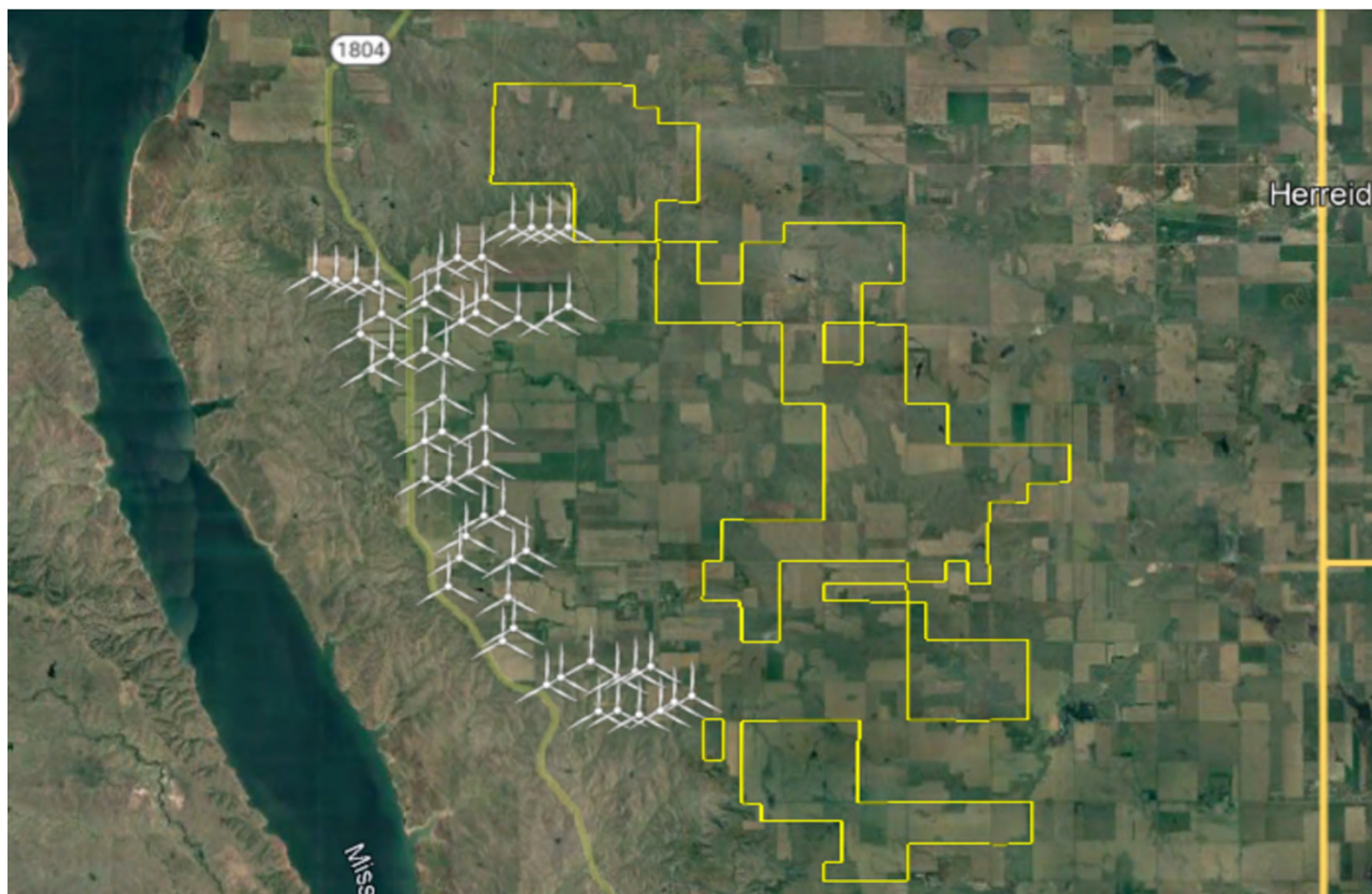
- Iowa, Minnesota, Montana, Nebraska and South Dakota

## **Project Overview**

---

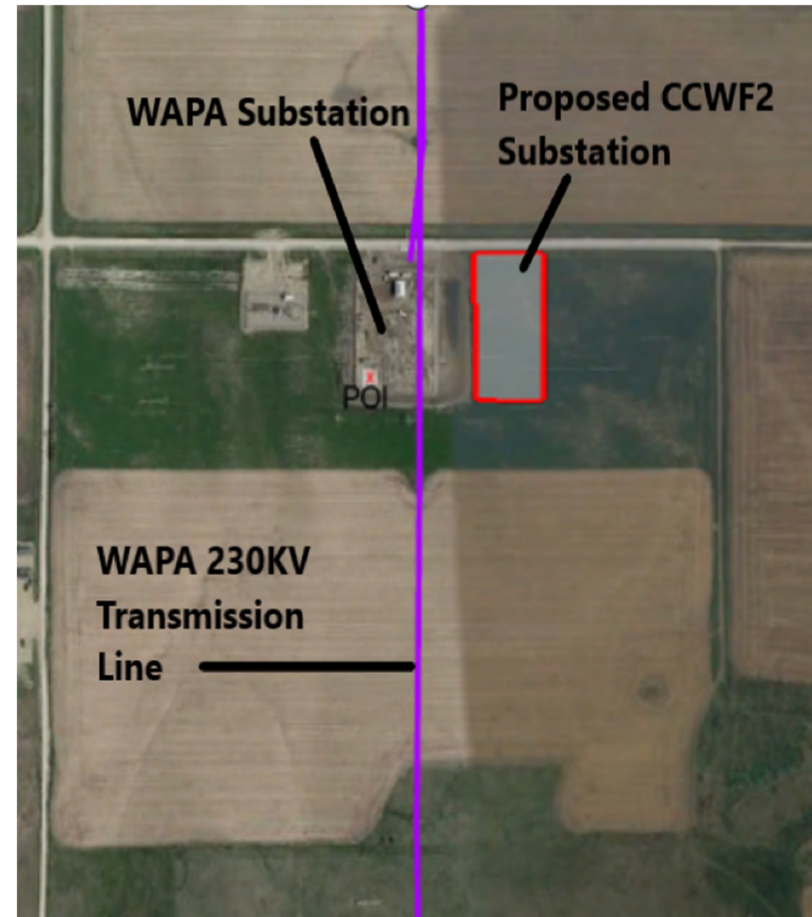
- ConEdison Development, doing business as Campbell County Wind Farm 2, LLC, is planning to build Phase 2 of the Campbell County Wind Farm wind energy facility in Campbell County, SD approximately 3 miles south of Pollock, SD and west of Herreid, SD.
- This proposed project will be east of Phase I, consisting of approximately 29 GE 3.4MW wind turbines.
- Located on almost 19,000 acres of land under easement. Setbacks and siting constraints limit the number of acres that could be utilized.
- There are approximately 20 landowner groups participating in the Project.

## **Existing CCWF1 Turbines and Proposed CCWF2 Location**



## Project Overview (cont'd)

- Project generation capacity is 98.9 megawatts (MW)
- Access roads to turbines
- Wind turbines will be connected by underground 34.5kV collection system
- Collection system will be stepped up to 230kV at the new project substation
- New project substation will tie into the WAPA substation POI using a short overhead 230kV transmission line



## Proposed Wind Turbines

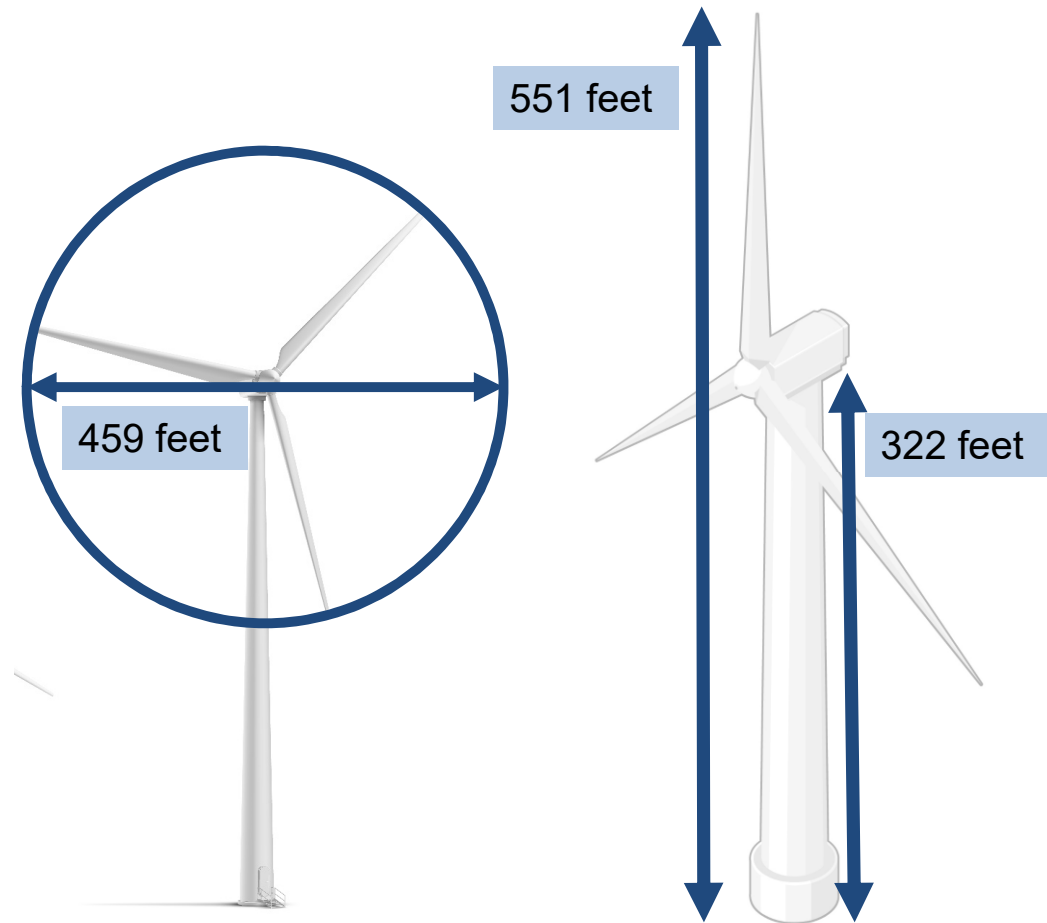
### Turbine Specs

GE 3.4 model

Rotor Diameter: 459 Feet

Tip Height: 551 Feet

Tower/Hub Height: 322 Feet



## **Additional Plans & Permits**

---

- Campbell County Conditional Use Permit (CUP)
- FAA Turbine Determination of No Hazard
- Noise Studies
- Shadow Flicker Studies
- Stormwater Permit
- Campbell County Road Use Agreement
- Decommissioning Plan
- ALTA / Civil Survey
- Soil Boring Tests
- Turbine Foundation Design
- Finalize Turbine Layout
- Prepare for Construction



## WEST's Role

WEST is an environmental consulting firm assisting with the environmental permitting process required for the Campbell County Wind Farm 2 Project. This includes:

- Collection, analysis, and reporting of biological and environmental survey data.
- Preparation of the Environmental Assessment (EA) as a third-party contractor.
- As the lead federal agency, WAPA is ultimately responsible for independently reviewing, analyzing, and judging all information in the EA.



## Federal and State Environmental Regulations and Guidelines

---

- National Environmental Policy Act
- National Historic Preservation Act
- Clean Water Act
- Endangered Species Act
- Bald and Golden Eagle Protection Act
- Migratory Bird Treaty Act
- South Dakota Codified Law § 34A-8  
*Endangered and Threatened Species*
- South Dakota Codified Law § 41-11  
*Protection of Birds and Small Game*
- USFWS Wind Energy Guidelines
- USFWS Eagle Conservation Plan Guidance
- Additional regulations may apply, including County Planning and Zoning Board decisions.



## Biological Studies Completed

### **Eagle/Large Bird Use and Small Bird Use Surveys**

- One year of surveys has been completed (2020 - 2021)

### **Eagle and Raptor Nest Surveys**

- Aerial and ground surveys were completed in 2021.

### **Prairie Grouse Lek Surveys**

- Aerial were completed by fixed-wing aircraft in 2021. Lek checks were also completed in 2021 to confirm activity and status.

### **Northern Long-eared Bat Habitat Assessment**

- Desktop habitat assessment completed in 2020.

### **Prairie Dog Colony Surveys**

- Desktop and field surveys were completed in 2021.



### **Bird Surveys**

- Year 2 of Eagle/Large Bird Use and Small Bird Use Surveys (2022-2023)
- Year 2 of Eagle and Raptor Nest Surveys (2023)
- Year 2 of Prairie Grouse Surveys (2023)

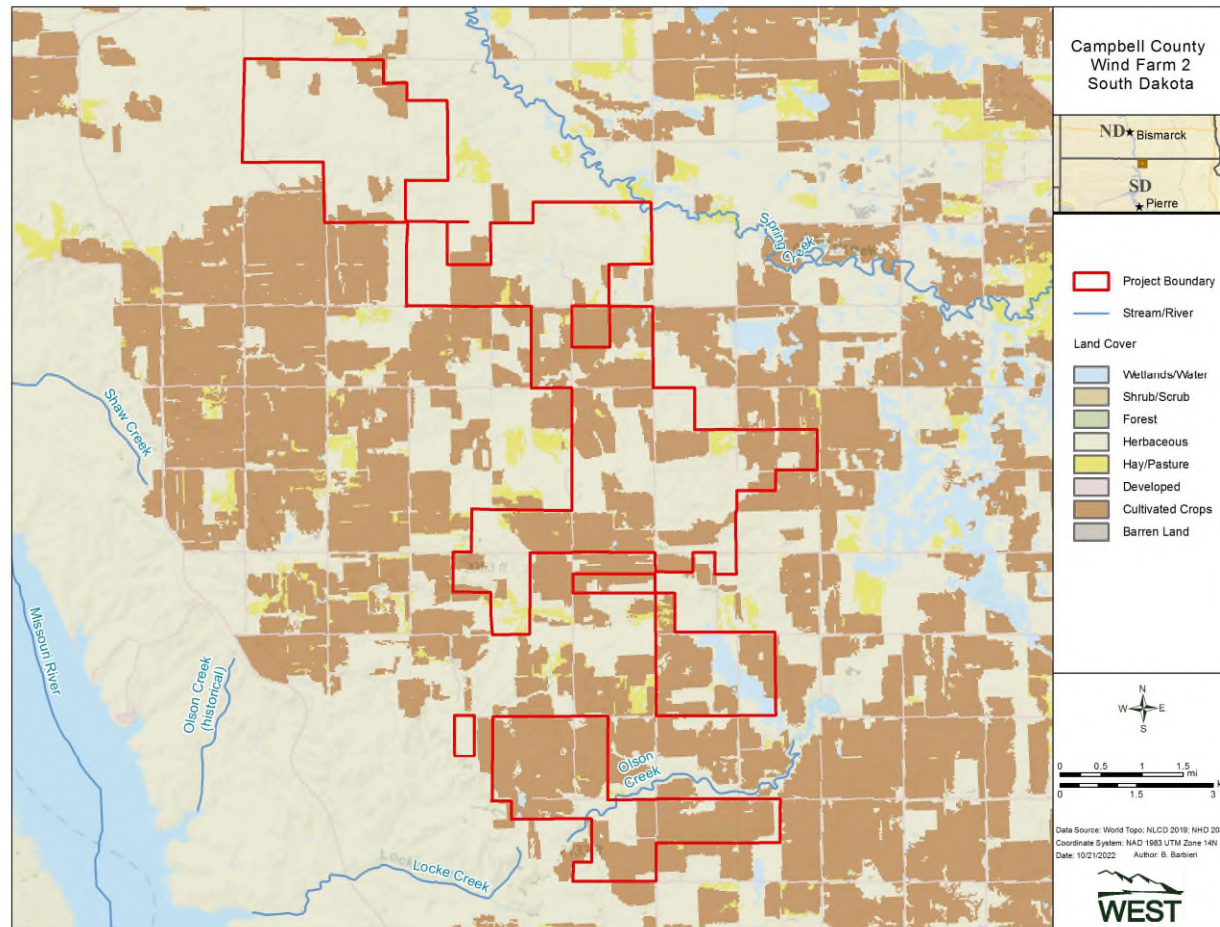
### **Bat Surveys**

- Northern long-eared bat presence/absence surveys (2023)

### **Habitat Assessments**

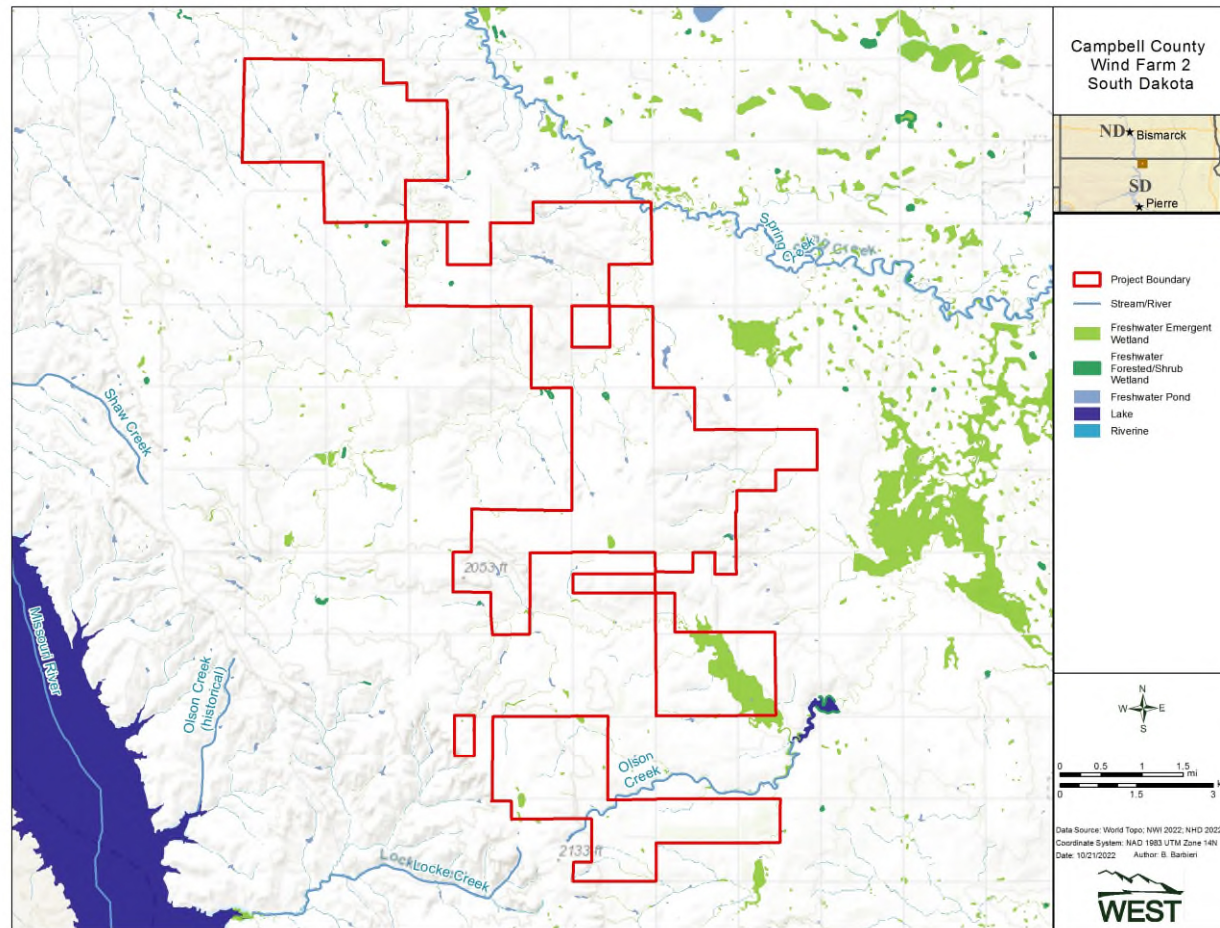
- Whooping Crane Habitat Assessment (2023)
- Grassland Habitat Assessment (2023)
- Wetland Delineation (2023)

## Land Cover in the Project Area



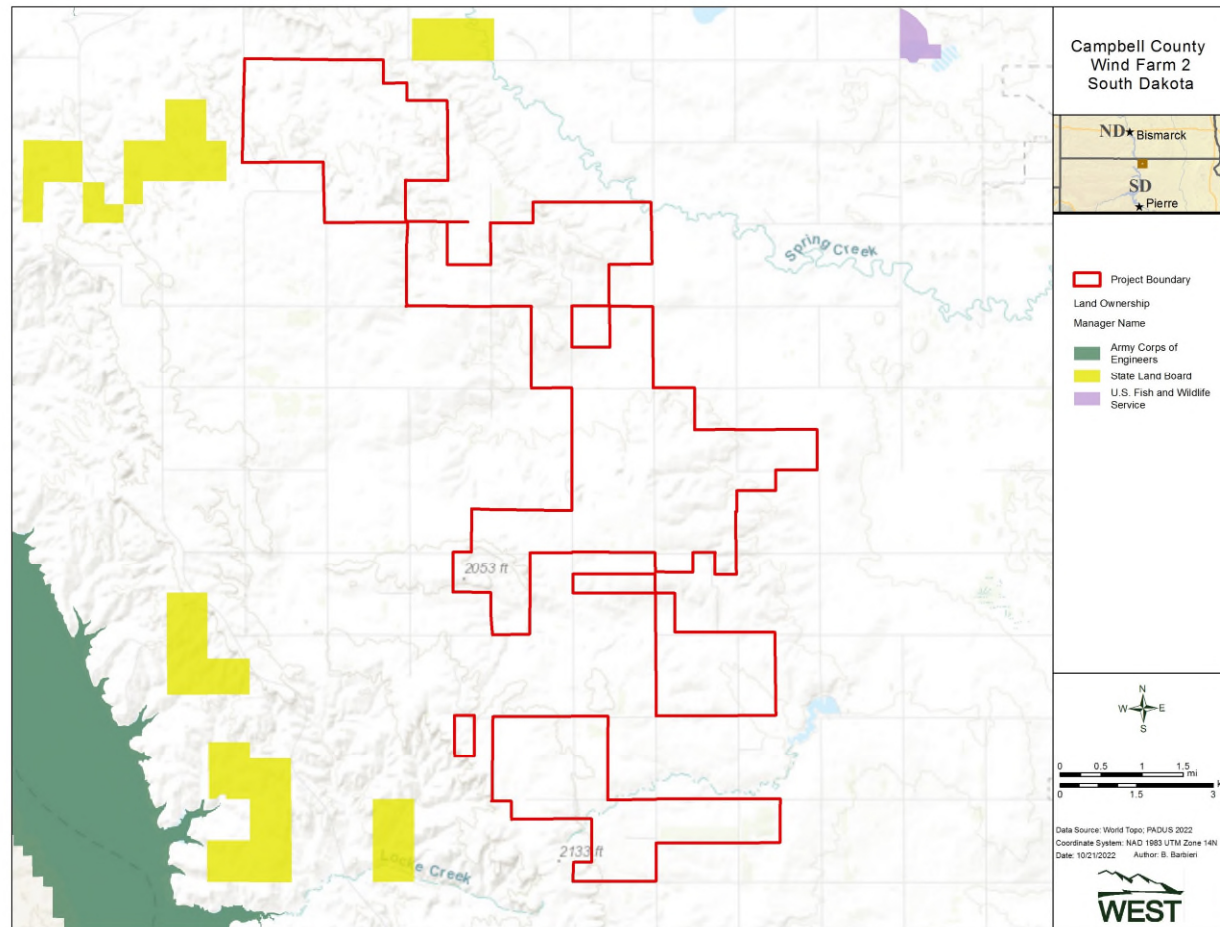


## National Wetland Inventory Data in the Project Area



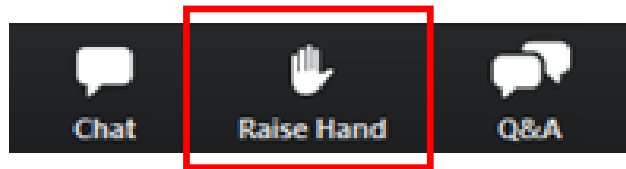


## Public and Protected Lands in and Near the Project Area



# Questions or Comments?

## How to Participate in Zoom:

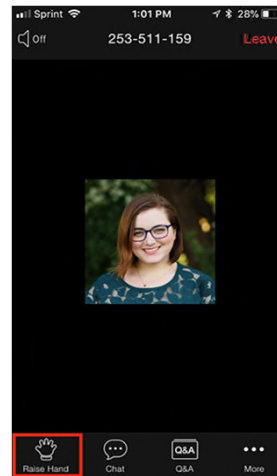


On-Screen Button

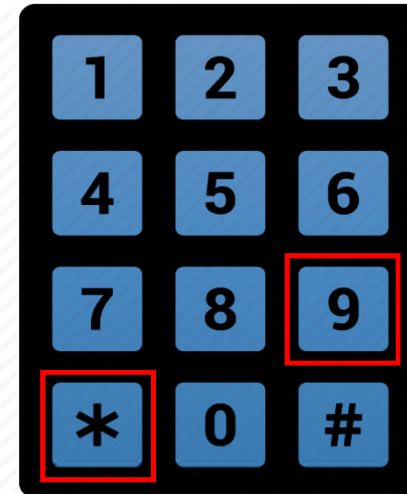
- Raise hand or press \*9 to ask a verbal question
- Use the Q&A button to type a written question



On-Screen Button



Mobile Button



Telephone Keypad



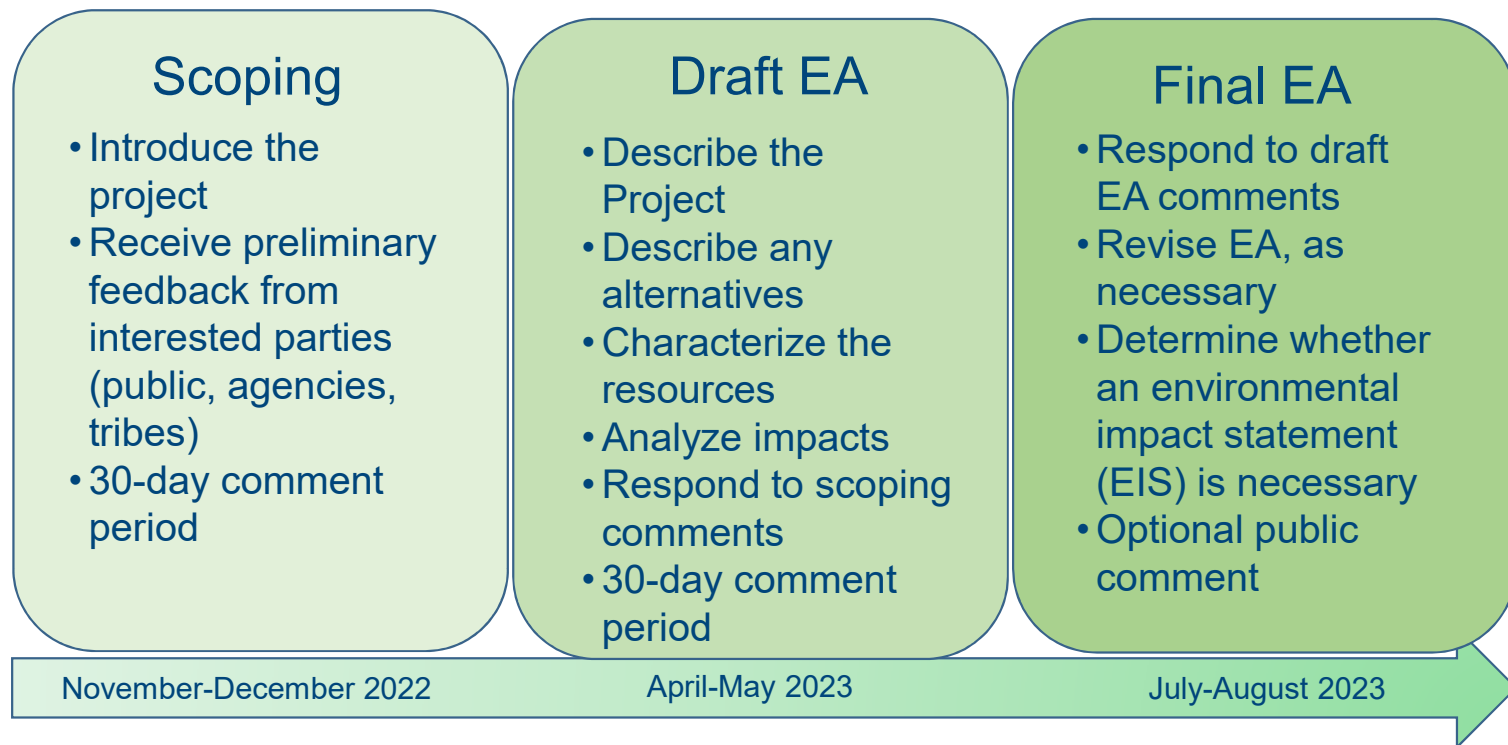
# How to Comment:

- Via the scoping meeting
  - Verbal
  - Q&A in Zoom
- Telephone  
**(307) 632-3147** to leave a voicemail
- Email to [nepa@wapa.gov](mailto:nepa@wapa.gov)
- Mail to:  
Western Area Power Administration  
6<sup>th</sup> Floor Attn: Mr. John Russell  
2900 4th Avenue North  
Billings, MT 59101

**Postmarked by Friday, December 2, 2022**



# Tiered Environmental Assessment (EA) Process







[www.wapa.gov](http://www.wapa.gov)



**Department of Energy**  
Western Area Power Administration  
Upper Great Plains Customer Service Region  
P.O. Box 35800  
Billings, MT 59107-5800

B0401.BL

August 26, 2024

Dear Interested Parties:

This letter is to update you on the proposed Campbell County Wind Farm 2 (Project) and to request your input on the Project. Campbell County Wind Farm 2 LLC's proposed Project would involve the construction of a 98.9-megawatt wind farm generating facility that includes 29 turbines and associated pads. Other Project components include an underground power collection system, a new collector substation, a new overhead transmission line that will be less than 700 feet in distance, access roads, and ancillary facilities. The proposed Project would be located on private land approximately three (3) miles south of Pollock, South Dakota in Campbell County. It is proposed to begin construction in 2025.

The Project would interconnect with Western Area Power Administration's (WAPA) transmission system at the Bismarck to Glenham 230-kilovolt (kV) transmission line at the existing Campbell County Substation. WAPA's decision of whether to approve the proposed interconnection is a federal action under the National Environmental Policy Act (NEPA). As a result, WAPA has prepared a Draft Environmental Assessment (EA) to analyze the environmental effects of the proposed Project on resources, including wetlands, vegetation and wildlife, cultural and recreation resources, as well as other social, economic, and environmental effects.

WAPA is requesting public review and comment on the Draft EA, which is available for download at the following website:

<https://www.wapa.gov/about-wapa/regions/ugp/environment/campbell-county-2/>

*Comments may be submitted in the following ways:*

- By mail to:  
Western Area Power Administration  
UGP NEPA Coordinator  
2900 4<sup>th</sup> Avenue North  
P.O. Box 35800  
Billings, MT 59101-1266
- By email to: [nepa@wapa.gov](mailto:nepa@wapa.gov) with "Campbell County Wind Farm 2 Project Comment" in the subject line.

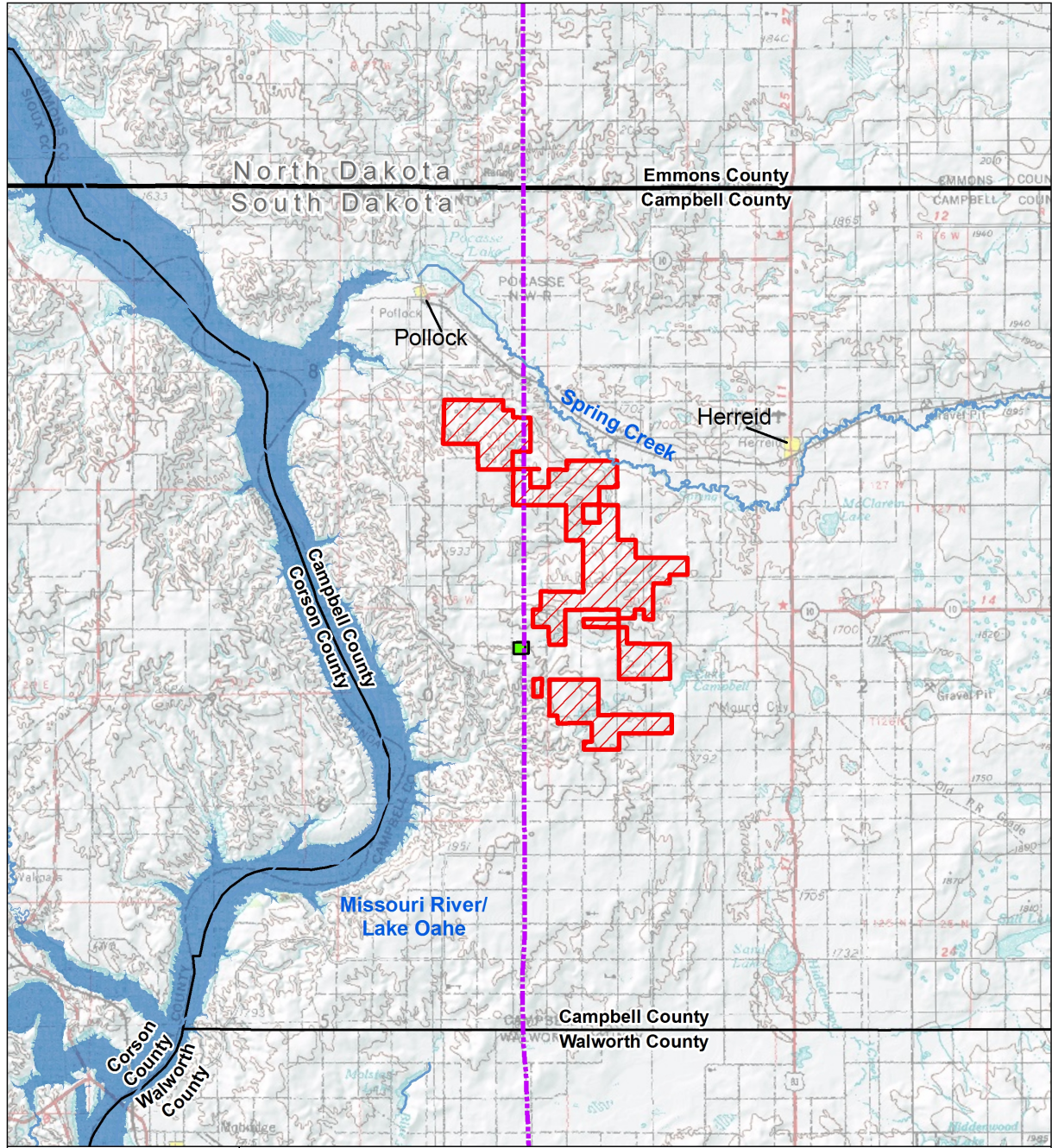
For your input to be considered, comments must be provided or postmarked by Monday, September 30 2024. If you have any questions or need more information about the Project, please contact WAPA using the methods listed above, calling (406) 255-2810, or visiting the Project website, also listed above. Thank you for your time and interest in the Campbell County Wind Farm 2 Project.



Sincerely,  
Ashley Jackson-Baillie  
Natural Resources Specialist  
WAPA

Enclosures

Project Map  
Draft EA Comment Form

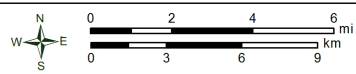


**Campbell County  
Wind Farm 2  
South Dakota**



- Project Area
- Proposed WAPA Interconnect
- County Boundary
- State Boundary

- WAPA Bismarck-Glenham 230kV transmission line
- Major Streams/Rivers
- Major Lakes/Reservoirs



Data Source: USA Topo 2021, NHD 2021, US DHS 2021  
 Coordinate System: NAD 1983 UTM Zone 14N  
 Date: 10/13/2022 Author: GPG



## Campbell County Wind Farm 2

### Draft Environmental Assessment Public Comment Form

Thank you for your interest in the Campbell County Wind Farm 2 Project. After reviewing the Draft Environmental Assessment (available to download at <https://www.wapa.gov/about-wapa/regions/ugp/environment/campbell-county-2/>), please complete the appropriate sections of this form to be included on the project mailing list and/or to provide comments. Comments can be submitted:

- By e-mail to: [nepa@wapa.gov](mailto:nepa@wapa.gov) with “Campbell County Wind Farm 2 Project Comment” in the subject line
- By mail to: WAPA at the address provided below

Your comments are important to us and will be accepted if provided or postmarked by **Monday, September 30, 2024** for formal consideration in the NEPA process. WAPA will accept comments submitted anonymously.

#### ***Please Print Contact Information Below:***

<u>Name:</u>	<u>Organization (if applicable):</u>
<u>E-mail Address (optional):</u>	<u>Daytime Phone No. (optional):</u>
<u>Street Address:</u>	<u>City / State / Zip Code:</u>

#### ***Please Share Comments, Questions, or Concerns Below (continue on separate sheet if necessary):***

---

---

---

---

---

---

---

---

Thank you for your time and interest in the project.



-----  
**Please fold in thirds and tape**

Place  
postage  
here

Western Area Power Administration  
UGP NEPA Coordinator  
2900 4<sup>th</sup> Avenue North P.O. Box 35800  
Billings, MT 59101-1266

-----



## Department of Energy

Western Area Power Administration  
Upper Great Plains Customer Service Region  
P.O. Box 35800  
Billings, MT 59107-5800

### Seeking Public Input!

Public comments are encouraged to provide feedback on the draft Environmental Assessment (EA) of a proposed wind energy facility in Campbell County, South Dakota. The proposed project, to be called Campbell County Wind Farm 2, would involve construction of a 98.9-megawatt wind farm generating facility and would interconnect to Western Area Power Administration's (WAPA) transmission system at the Bismark to Glenham 230-kilovolt (kV) transmission line at the existing Campbell County Substation. The proposed project would include a total of 29 turbines and associated pads as well as an underground power collection system, a new collector substation, a new overhead transmission line less than 700 feet in distance, access roads, and other ancillary facilities. The proposed project would be located on private land approximately three (3) miles south of Pollock, South Dakota in Campbell County. It is proposed to begin construction in 2025.

WAPA is requesting public review and comment on the Draft Environmental Assessment (EA), which is available for download at the following website: <https://www.wapa.gov/about-wapa/regions/ugp/environment/campbell-county-2/>

*Comments may be submitted in the following ways:*

- By mail to:  
Western Area Power Administration  
UGP NEPA Coordinator  
2900 4<sup>th</sup> Avenue North  
P.O. Box 35800  
Billings, MT 59101-1266
- By email to: [nepa@wapa.gov](mailto:nepa@wapa.gov) with "Campbell County Wind Farm 2 Project Comment" in the subject line

Comments should be provided or postmarked no later than Monday September 30, 2024. If you have any questions or need more information about the Project, please contact WAPA using the methods listed above, calling (406) 255-2810, or visiting the Project website, also provided above.





Department of Energy  
Western Area Power Administration  
Upper Great Plains Customer Service  
Region  
P.O. Box 35800  
Billings, MT 59107-5800

# SEEKING PUBLIC INPUT!

Public comments are encouraged to provide feedback on the draft Environmental Assessment (EA) of a proposed wind energy facility in Campbell County, South Dakota. The proposed project, to be called Campbell County Wind Farm 2, would involve construction of a 98.9-megawatt wind farm generating facility and would interconnect to Western Area Power Administration's (WAPA) transmission system at the Bismarck to Glenham 230-kilovolt (kV) transmission line at the existing Campbell County Substation. The proposed project would include a total of 29 turbines and associated pads as well as an underground power collection system, a new collector substation, a new overhead transmission line less than 700 feet in distance, access roads, and other ancillary facilities. The proposed project would be located on private land approximately three (3) miles south of Pollock, South Dakota in Campbell County. It is proposed to begin construction in 2025.

WAPA is requesting public review and comment on the Draft Environmental Assessment (EA), which is available for download at the following website: <https://www.wapa.gov/about-wapa/regions/ugp/environment/campbell-county-2/>

## **Comments may be submitted in the following ways:**

•By mail to:

Western Area Power Administration  
UGP NEPA Coordinator  
2900 4th Avenue North  
P.O. Box 35800  
Billings, MT 59101-1266

•By email to: [nepa@wapa.gov](mailto:nepa@wapa.gov) with "Campbell County Wind Farm 2 Project Comment" in the subject line

Comments should be provided or postmarked no later than **Monday, September 30, 2024**. If you have any questions or need more information about the Project, please contact WAPA using the methods listed above, calling (406) 255-2810 or visiting the Project website, also provided above.