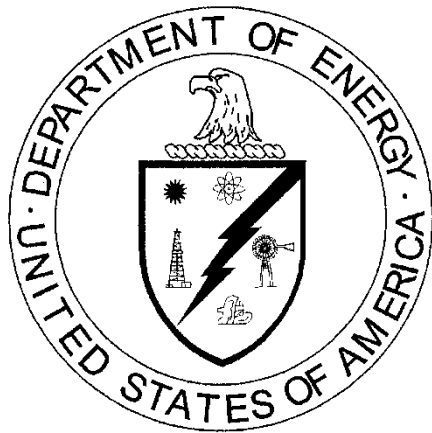


**Floodplain Statement of Findings  
for Transport Road Bridge Demolition  
at the Paducah Gaseous Diffusion Plant,  
Paducah, Kentucky**



**CLEARED FOR PUBLIC RELEASE**

**Floodplain Statement of Findings  
for Transport Road Bridge Demolition  
at the Paducah Gaseous Diffusion Plant,  
Paducah, Kentucky**

Issued—March 2025

U.S. DEPARTMENT OF ENERGY  
Office of Environmental Management

Prepared by  
FOUR RIVERS NUCLEAR PARTNERSHIP, LLC,  
managing the  
Deactivation and Remediation Project at the  
Paducah Gaseous Diffusion Plant  
under Contract DE-EM0004895

**CLEARED FOR PUBLIC RELEASE**

# CONTENTS

1. INTRODUCTION.....	1
2. PROJECT DESCRIPTION .....	1
3. FLOODPLAIN LOCATION EXPLANATION .....	1
4. ALTERNATIVES.....	1
5. STATEMENT OF FINDINGS .....	2
6. MINIMIZATION OF POTENTIAL FLOODPLAIN HARM.....	2
7. PUBLIC COMMENT PERIOD.....	2

## 1. INTRODUCTION

This floodplain statement of finding was prepared to satisfy the requirements found in 10 *CFR* Part 1022.14(b) (1) through (5) and contains a brief description of the proposed action, which includes a location map; an explanation indicating why the action is proposed to be located in the floodplain; a list of alternatives considered; a statement indicating whether the action conforms to applicable floodplain protection standards; and a brief description of steps to be taken to minimize potential harm to or within the floodplain.

## 2. PROJECT DESCRIPTION

U.S. Department of Energy (DOE) prepared the *Floodplain Assessment for Proposed Transport Road Bridge Demolition at the Paducah Gaseous Diffusion Plant Site, Paducah, Kentucky*, DOE/LX/07-2517&D1, to evaluate the potential impacts of deactivating, demolishing, and dispositioning the transport road bridge over Bayou Creek at the Paducah Site, as required by 10 *CFR* Part 1022, *Compliance with Floodplain and Wetland Environmental Review Requirements*. Figure 1, Transport Road Bridge Removal Floodplain Map, provides the site location. Demolition of the transport road bridge will require excavators to push and/or pull the approximate 70 ft × 17 ft steel beam bridge across Bayou Creek. This will be accomplished by placing one excavator on one side of the bridge and one excavator on the other side of the bridge, lifting the bridge up, and pushing/pulling it toward the north side of Bayou Creek. Once the bridge is far enough over the creek to safely set it down, the bridge will be set down and then an excavator will enter Bayou Creek to lift the bridge up and continue pushing and/or pulling the bridge until it is on the top of the embankment.

## 3. FLOODPLAIN LOCATION EXPLANATION

During the last inspection, the transport road bridge was determined to have lost its structural integrity, posed a safety concern to pedestrian traffic, and had the potential to collapse into Bayou Creek. Demolition activities will have short-term impacts on 100 linear ft of the stream and 0.3 acre of floodplain due to the operation of equipment and removal of trees. The proposed project site is within the Federal Emergency Management Agency (FEMA) special flood hazard Zone A, which is subject to inundation by the 1% annual chance of flooding with no base flood elevations and is identified as a 100-year floodplain area by FEMA on the FEMA Flood Insurance Rate Maps for McCracken County Unincorporated areas (FEMA, Map No. 21145C0105F, 11/02/2011) (Figure 1).

## 4. ALTERNATIVES

The alternatives to the proposed project include no action and bridge replacement as described below.

**No Action**—The no action alternative was considered, but not selected, because the transport road bridge has lost its structural integrity, poses safety concerns to pedestrian traffic, and has the potential to collapse into Bayou Creek. The collapse would impact flow in the creek and disrupt flow during storm water events.



**Bridge Replacement**—The bridge replacement alternative was considered, but not selected due to a lack of funding. The transport road bridge is not required for DOE operations. The land is licensed to West Kentucky Wildlife Management and has alternate routes available. The cost to replace the bridge does not fit the life cycle cost baseline for the usage it receives.

## **5. STATEMENT OF FINDINGS**

In accordance with 10 *CFR* Part 1022, and based upon the information presented in this statement of findings and *Floodplain Assessment for Proposed Transport Road Bridge Demolition at the Paducah Gaseous Diffusion Plant, Paducah, Kentucky*, DOE/LX/07-2517&D1, DOE concludes that this action conforms to applicable floodplain protection standards and the appropriate steps have been taken to minimize potential harm within the floodplain.

## **6. MINIMIZATION OF POTENTIAL FLOODPLAIN HARM**

An incidental and temporary disturbance of the floodplain would occur from the operation of equipment during demolition. This temporary disturbance will be minimized through the following actions.

- No mechanized clearing in the floodplain will be conducted.
- Roots of the trees removed will be left in place to avoid ground disturbance.
- Low ground pressure equipment or mats during the clearing and demolition activities will be used to minimize rutting and reduce soil compaction.
- If equipment must be refueled, then spill pans and additional best management practices will be employed to prevent spills and/or leaks into wetlands or drainages.
- Hazardous materials, chemicals, fuels, and oils will not be stored in or adjacent to the floodplain.
- Floating silt fencing will be used downstream from the work area to minimize silt migration in Bayou Creek.
- Floating oil boom will be used downstream from the work area to minimize the impact from any potential spills.
- Other best management practices will reflect field conditions, as necessary.

## **7. PUBLIC COMMENT PERIOD**

In accordance with 10 *CFR* Part 1022, DOE sent notice of the proposed floodplain action and floodplain assessment to the appropriate government agencies and other interested parties for review and comment. DOE published the notice in the March 12, 2025, edition of the local newspaper, *The Paducah Sun*. Additionally, the notice and floodplain assessment report were posted at the Paducah DOE Environmental

Information Center (EIC) at <https://eic.pad.pppo.gov/About.aspx>, on the DOE Portsmouth/Paducah Project Office Paducah Public Documents webpage at <https://www.energy.gov/pppo/paducah-site/paducah-community-outreach/paducah-public-documents>, or in hard copy at the Paducah DOE EIC, 5100 Alben Barkley Drive, Room 221, Paducah, KY. The public and agency comment period ran from March 12, 2025, through March 26, 2025, thus meeting the 15-day requirement of 10 *CFR* Part 1022. DOE did not receive any substantive comments from government agencies, persons, groups of interest, or the general public.

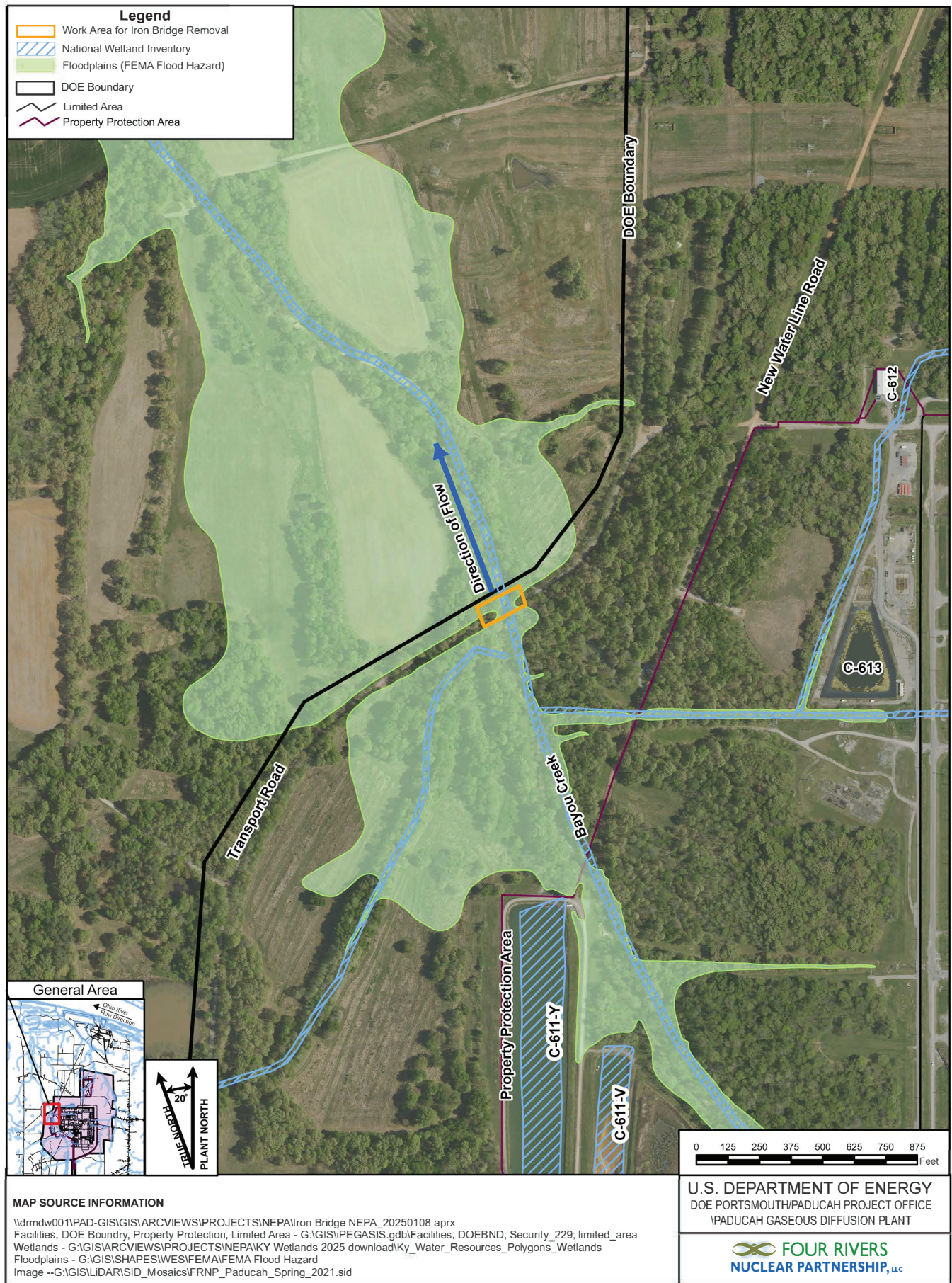


Figure 1. Transport Road Bridge Removal Floodplain Map