

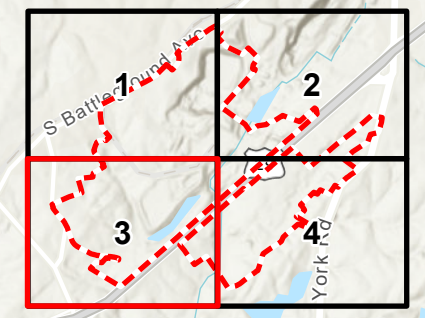
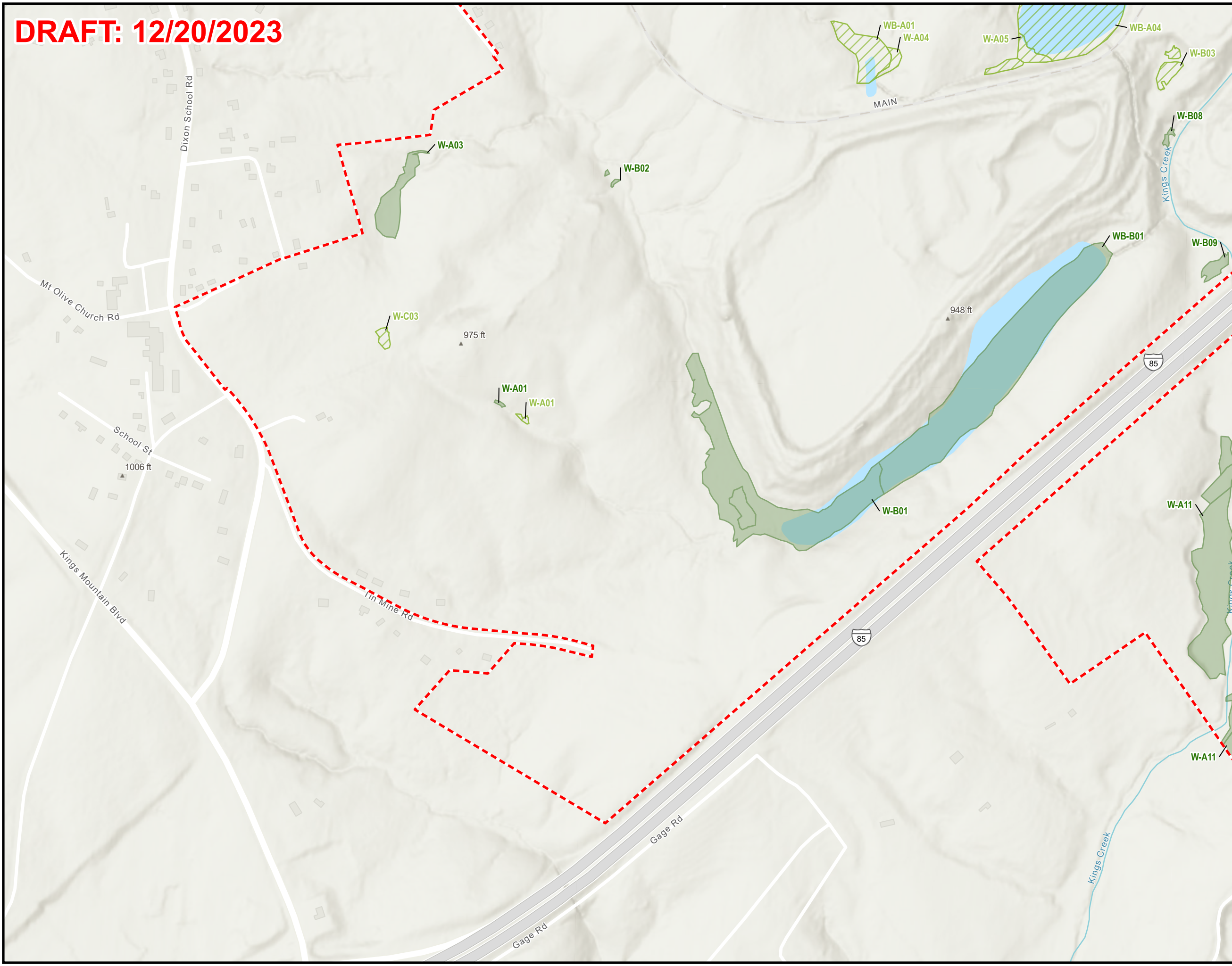


APPENDIX F WETLANDS



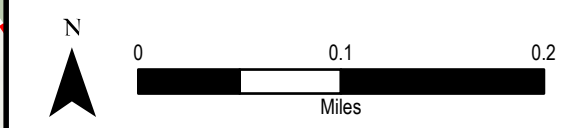
APPENDIX F-1 WETLAND DELINEATIONS AT MINE SITE

DRAFT: 12/20/2023



- Project Boundary - Mine
- USACE Jurisdictional Wetland
- USACE Non-Jurisdictional Wetland

Notes:
- Note 1: Project Features are provisional and incomplete at this time.

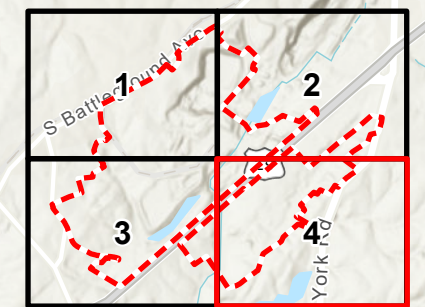
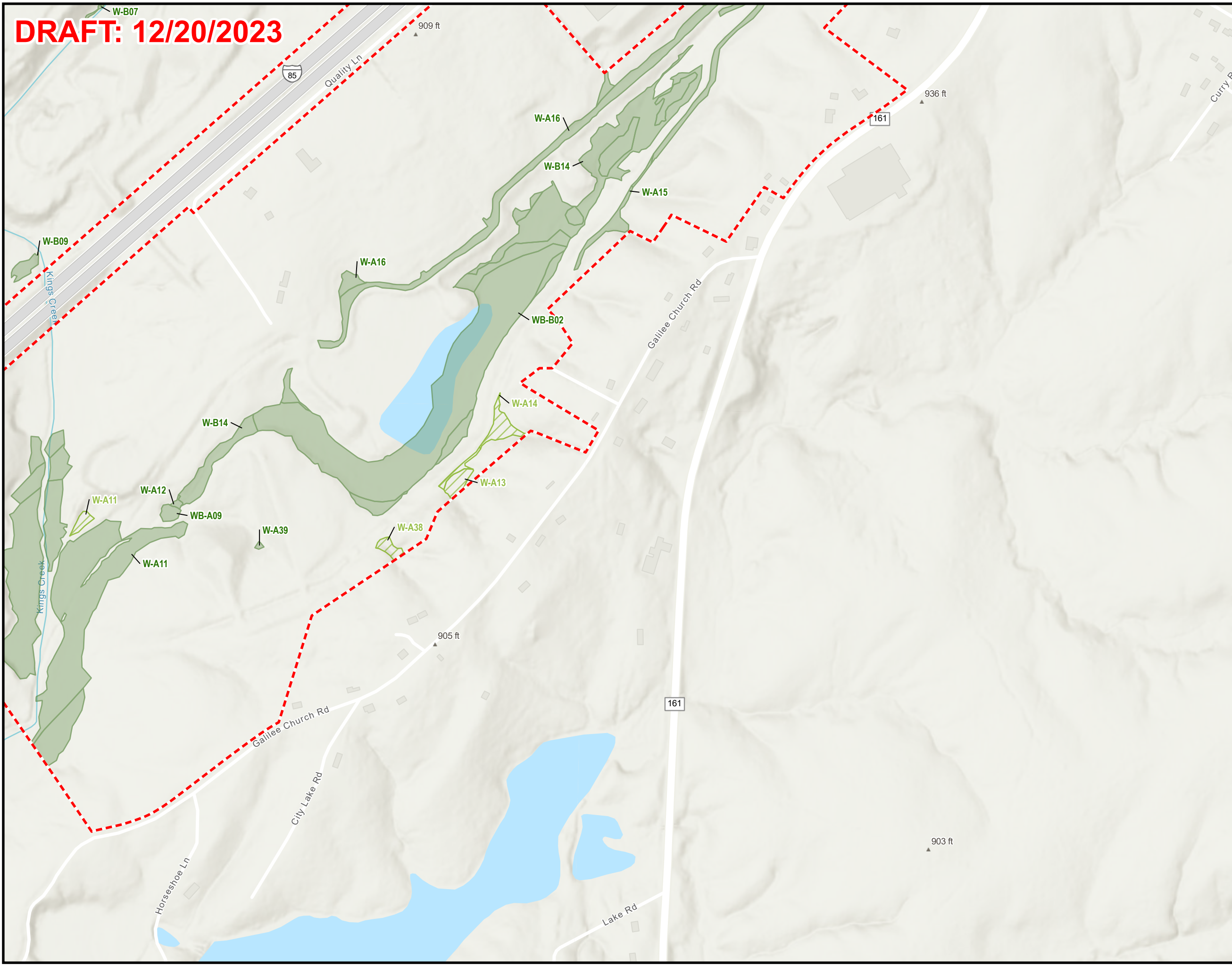


1 inch = 0.1 mi when printed 11x17

Wetland Delineations at Mine Site
Page 3 of 4
Kings Mountain Lithium Mine
Albemarle
Kings Mountain
Cleveland County,
North Carolina

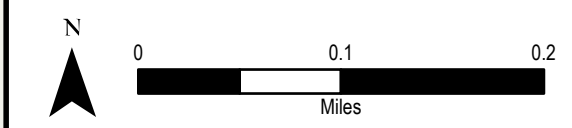
Path: \\F:\Projects\KingsMountain\KingsMountain\GIS\PROJ\USACE\Wetland\Wetland\Dimension11\DrawnBy: Nicole.Dunn | Created Date: 10/20/2023 | Revised: 12/20/2023

DRAFT: 12/20/2023



- Project Boundary - Mine
- USACE Jurisdictional Wetland
- USACE Non-Jurisdictional Wetland

Notes:
- Note 1: Project Features are provisional and incomplete at this time.



1 inch = 0.1 mi when printed 11x17

Wetland Delineations at Mine Site
Page 4 of 4
Kings Mountain Lithium Mine
Albemarle
Kings Mountain
Cleveland County,
North Carolina

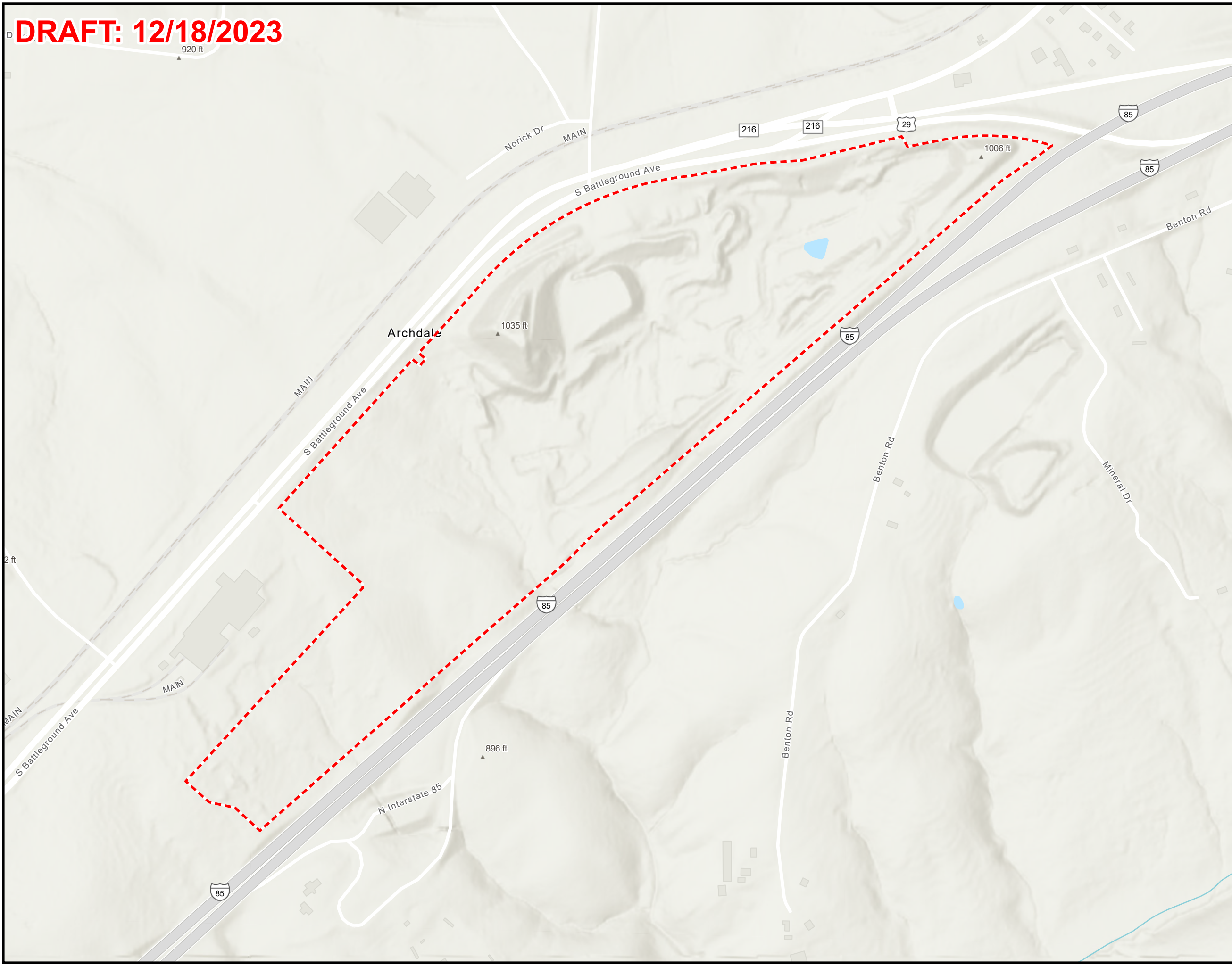



Path: \\F:\USProjects\KingsMountain\KingsMountain\GIS\PROJ\USACE\STATE\KingsMountain_USACE\Figures\Notes\app-02_09_ZALB\M_C_Wetland_Delineation.mxd | Drawn by: Nicole.Dunn | Created Date: 10/20/2024 | Released: 12/20/2023



APPENDIX F-2 WETLAND DELINEATIONS AT TSF

DRAFT: 12/18/2023




 Project Boundary - TSF

Notes:
- Note 1: Project Features are provisional and incomplete at this time.



1 inch = 0.1 mi when printed 11x17

Wetland Delineations at TSF
Kings Mountain Lithium Mine
Albemarle
Kings Mountain
Cleveland County,
North Carolina

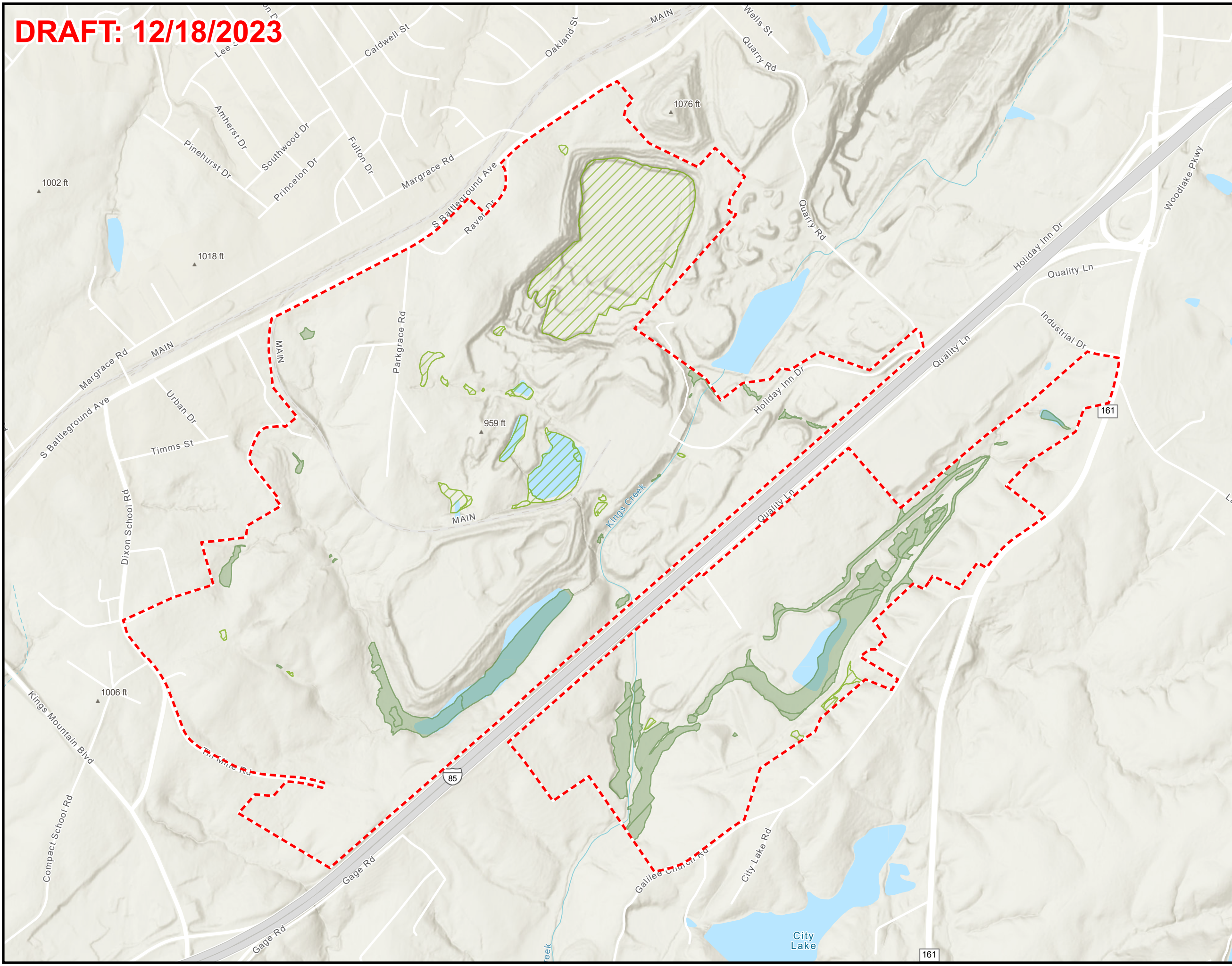


Path: \\F:\S\Projects\KingsMountain\KingsMountain\GIS\PROJ\GSD\ESRI\B... US\GCE\G... Figures\Notes\app\02_09_ZAL\B..._Dimension 1 | Created Date: 10/22/2024 | Released Date: 12/18/2023



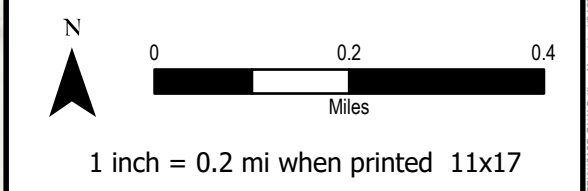
APPENDIX F-3 WETLAND DELINEATIONS AT MINE SITE OVERVIEW

DRAFT: 12/18/2023




- Project Boundary - Mine
- Waters Delineation (SWCA - September 2023)**
- USACE Jurisdictional Wetland
- USACE Non-Jurisdictional Wetland

Notes:
- Note 1: Project Features are provisional and incomplete at this time.



Wetland Delineations at Mine Site
Kings Mountain Lithium Mine
Albemarle
Kings Mountain
Cleveland County,
North Carolina



Path: \\F:\US\Projects\KingsMountain\KingsMountain\GIS\PROJ\USACE\ESRI\Wetland_Delineation_Overview.aprx; Date: 10/23/2024 11:05:24 AM; Created Date: 10/23/2024 11:05:24 AM; Revised: 12/18/2023






APPENDIX F-4 NATIONAL WETLANDS INVENTORY: KINGS MOUNTAIN



U.S. Fish and Wildlife Service, National Standards and Support Team,
wetlands_team@fws.gov

June 6, 2024

Wetlands

- | | | | | | |
|---|--------------------------------|---|-----------------------------------|---|----------|
|  | Estuarine and Marine Deepwater |  | Freshwater Emergent Wetland |  | Lake |
|  | Estuarine and Marine Wetland |  | Freshwater Forested/Shrub Wetland |  | Other |
| | |  | Freshwater Pond |  | Riverine |

This map is for general reference only. The US Fish and Wildlife Service is not responsible for the accuracy or currentness of the base data shown on this map. All wetlands related data should be used in accordance with the layer metadata found on the Wetlands Mapper web site.



APPENDIX G PUBLIC COMMENTS AND RESPONSES

Albemarle Kings Mountain Lithium Mine Project Public Engagement

Date	Event Name	Type of Event	Stakeholders	Subject Categories/Topics
2022-03-28	Community Town Hall Meeting	Community Town Hall	General Public	Announcement of KM project exploration
2022-09-21	Community Town Hall Meeting	Community Town Hall	General Public	Feasibility study timeline, Expected life of the mine, Traffic, Mining activities affect on land and animals, Dust, Local Community Engagement Water End Land Use & Closure Social Investment
2022-10-13	Community Advisory Panel (CAP) Meeting	CAP Meeting	CAP members	Overview of Kings Mountain Mine Project
2022-11-17	CAP Meeting	CAP Meeting	CAP members	CAP Meeting Agenda: Item 1: Safety Moment Item 2: Introductions: CAP Members and Albemarle Representatives Item 3: Members Vote on Draft CAP Bylaws Item 4: Weighted Voting Exercise Item 5: Kings Mountain Site Overview Item 6: Mine Tour Safety Protocols
2022-11-19	CAP Mine Tour	Mine Tour	CAP members	Continental Breakfast & Mine Tour Meeting Information: The third meeting of the Albemarle Kings Mountain Community Advisory Panel (CAP) was held on November 19, 2022, at Albemarle Kings Mountain, NC. It began at 8:03 a.m. and was facilitated by Kristi Moore, Principal Consultant, ERM (third-party support).
2023-01-26	CAP Meeting	CAP Meeting	CAP members	Water Study, Concentrator Process
2023-02-02	Community Town Hall Meeting	Community Town Hall	General Public	Department of Energy Award, Water Study Updates, Concentrator Processing, Local Community Engagement Water
2023-02-14	NGO meeting	NGO meeting	Catawba Riverkeeper and Broad Riverkeeper	Mine tour and hydrology update
2023-02-23	CAP Meeting	CAP Meeting	CAP members	Mine Operations 101, End Land Use
2023-03-16	CAP Meeting	CAP Meeting	CAP members	Geochemistry, End Land Use Discussion
2023-03-30	End Land Use_Community Workshop #1	Workshop	General Public	End Land Use & Closure
2023-04-20	CAP Meeting	CAP Meeting	CAP Members	Environmental and Social Impact Assessment (ESIA) announcement, Socioeconomic Baseline Study, Economic and Workforce Development
2023-05-11	Lake Montonia Meeting	Community meeting	Lake Montonia Community members	Overview of Kings Mountain Mine Project
2023-05-17	End Land Use_Employee Workshop #1	Workshop	Albemarle Kings Mountain Employees	End Land Use & Closure
2023-05-18	CAP Meeting	CAP Meeting	CAP Members	Drilling, Water Study Update
2023-05-18	End Land Use_AM Student Workshop	Workshop	Kings Mountain High School Students	End Land Use & Closure
2023-05-18	End Land Use_PM Student Workshop	Workshop	Kings Mountain High School Students	End Land Use & Closure
2023-05-22	Community Town Hall Meeting	Community Town Hall	General Public	ESIA Announcement, Waste Rock, Land Acquisition

Albemarle Kings Mountain Lithium Mine Project Public Engagement

Date	Event Name	Type of Event	Stakeholders	Subject Categories/Topics
2023-06-05	Powering the Future at UNCC	In-person Meeting	Grey Mills - North Carolina General Assembly Melanie O'Connell Underwood - Economic Development Partnership of NC (EDPNC) (Existing Industry Expansions Manager, SW Region) Ray Pickett - North Carolina General Assembly (District 93 Representative) Solange Tricanowicz Thom Tillis - United States Senate (Senator)	Overview of Kings Mountain Mine Project
2023-06-14	End Land Use_AM Community Workshop #2	Workshop	General Public	End Land Use & Closure
2023-06-14	End Land Use_PM Community Workshop #2	Workshop	General Public	End Land Use & Closure
2023-06-15	CAP Meeting	CAP Meeting	CAP members	Social Investment Visioning Exercise
2023-08-17	CAP Meeting	CAP Meeting	CAP members	Pit Dewatering Progress, ESIA Update
2023-08-28	Meeting - Kings Mountain Woman's Club	In-person Meeting	General Public	Overview of Kings Mountain Mine Project
2023-08-31	Community Open House	Open House	General Public	Geology 101, Mining 101, Hydrology 101
2023-09-06	Meeting_Broad Riverkeeper	In-person Meeting	David Caldwell Broad Riverkeeper Mountain True	Pit dewatering permit update
2023-09-21	CAP Meeting	CAP Meeting	CAP Members	Permitting process, Environmental and Social Impact Assessment (ESIA), Waste Rock and Tailings
2023-09-28	Community Town Hall	Community Town Hall	General Public	Mining 101: Waste Rock and Tailings, Upcoming Project Activity: Pit dewatering and Permitting and ESIA. Permitting / Approvals, Local Community Engagement
2023-10-02	Mt Calvary Community Center	Community meeting	General Public/EJ Community	Overview of Kings Mountain Mine Project, ESIA
2023-10-26	CAP Meeting	CAP Meeting	CAP members	Year in Review, Mine design update
2023-11-16	CAP Meeting	CAP Meeting	CAP members	Lithium Ecosystem Discussion, Albemarle and Our Role in the Energy Transition
2023-11-29	Mine Tour_County & Tribal Leadership	Mine Tour	Brian (Bill) Harris - Catawba Indian Nation (Chief) Connie Wade - Catawba Indian Nation (At-Large Member) DeLesslin "Roo" George-Warren - Catawba Indian Nation (At-Large Member) Jason Falls - Cleveland County Government (Business Development Director) Johnny Hutchins - Cleveland County Board of Commissioners (Commissioner) Patricia Leach - Catawba Indian Nation (Assistant Chief) Phyllis Nowlen - Cleveland County Government (Soil & Water Conservation District Board) Roderick Beck - Catawba Indian Nation (Secretary/Treasurer) Tylee Tracer-Anderson - Catawba Indian Nation (Communications Director)	Overview of Kings Mountain Mine Project
2023-12-05	Mine Tour-Inaugural Media Day	Mine Tour	Local media outlets	Overview of Kings Mountain Mine Project
2024-01-18	CAP Meeting	CAP Meeting	CAP members	Operations Update

Albemarle Kings Mountain Lithium Mine Project Public Engagement

Date	Event Name	Type of Event	Stakeholders	Subject Categories/Topics
2024-01-18	Environmental NGO Summit	In-person Meeting	Environmental NGOs NRDC E2 Southern Alliance for Clean Energy Southern Environmental Law Center NC LCV	Kings Mountain Mine Project Overview
2024-01-25	Ellis_Community Group meeting	Community meeting	General Public	Overview of Kings Mountain Mine Project
2024-01-27	Community Meeting_Mt Olive Baptist Church	Community meeting	General Public/EJ Community	Overview of Kings Mountain Mine Project
2024-01-30	Community Meeting_Bethlehem Baptist Church	Community meeting	General Public/EJ Community	Overview of Kings Mountain Mine Project
2024-01-31	Community Meeting_KMHS	Community meeting	General Public/EJ Community	Overview of Kings Mountain Mine Project
2024-02-01	Community Meeting_Bethlehem Baptist Church	Community meeting	General Public/EJ Community	Overview of Kings Mountain Mine Project
2024-02-06	Community Meeting_KM YMCA	Community meeting	General Public/EJ Community	Overview of Kings Mountain Mine Project
2024-02-07	Community Meetings_KM YMCA	Community meeting	General Public/EJ Community	Overview of Kings Mountain Mine Project
2024-02-15	CAP Meeting	CAP Meeting	CAP members	Supplier Diversity, mine plan roll out feedback
2024-03-21	CAP Meeting	CAP Meeting	CAP members	Pit Dewatering, Federal Grant Funding
2024-04-25	CAP Meeting	CAP Meeting	CAP members	Open Pit Mine Design and Ore Processing, Mineral Processing Facility
2024-04-27	Community Meeting_Mt. Zion Baptist Church Community Meeting	Community meeting	General Public/EJ Community	Overview of Kings Mountain Mine Project
2024-05-23	CAP Meeting	CAP Meeting	CAP members	Rock and Material Storage Facilities, Tailings Storage Facility, Mine Reclamation & Closure
2024-06-11	Community Town Hall Meeting	Community meeting	General Public	Kings Mountain Mine Project- updated plans, ESIA
2024-06-15	Community Meeting_Mt. Olive Baptist Church	Community meeting	General Public/EJ Community	Kings Mountain Mine Project - updated plans, ESIA
2024-06-18	Community Meeting_Mt. Zion Baptist Church	Community meeting	General Public/EJ Community	Kings Mountain Mine Project - updated plans, ESIA
2024-06-20	CAP Meeting	CAP Meeting	CAP members	Environmental and Social Impact Assessment
2024-06-25	Community Meeting_Bethlehem Baptist Church	Community meeting	General Public/EJ Community	Kings Mountain Mine Project - updated plans, ESIA
2024-06-27	Community Meeting_Mauney Memorial Library	Community meeting	General Public/EJ Community	Kings Mountain Mine Project - updated plans, ESIA
2024-08-15	CAP Meeting	CAP Meeting	CAP members	Pit dewatering update, ESIA, Baseline Studies: Intangible Cultural Heritage

CAP = Community Advisory Panel