



# U.S. Department of Energy's Presidential Permit Process

Basin Electric Power Cooperative Presidential  
Permit Application

October 29-30th, 2024





# AGENDA

- U.S. Department of Energy (DOE), Grid Deployment Office (GDO) Introduction
- DOE and the Presidential Permitting Process
- National Environmental Policy Act (NEPA) Overview
- Comment Submission
- Questions
- Tande and Wheelock-to-Saskatchewan 230-kV Transmission Project Presentation (Basin Electric)



# INTRODUCTIONS



**Christina Gomer**

Christina is a career "Fed" with experience in all things environmental compliance. In her spare time, she enjoys running with friends, watching sports, and getting outside with her husband and two kids.



**Ashleigh Angel**

Ashleigh has a broad legal and environmental background. Prior to GDO, she worked as a state employee for both New Jersey and Vermont. Ashleigh loves to run, read, see live music, travel, and spend time with her husband and cats, Tesla and Noodles.



# INTRODUCTIONS: U.S. GRID DEPLOYMENT OFFICE

GDO was established in 2022 to catalyze the development of new and upgraded electric infrastructure across the country.

GDO's primary activities:

- Maintain and invest in critical generation facilities
- Develop and upgrade high-capacity electric transmission lines nationwide
- Deploying transmission and distribution technologies.

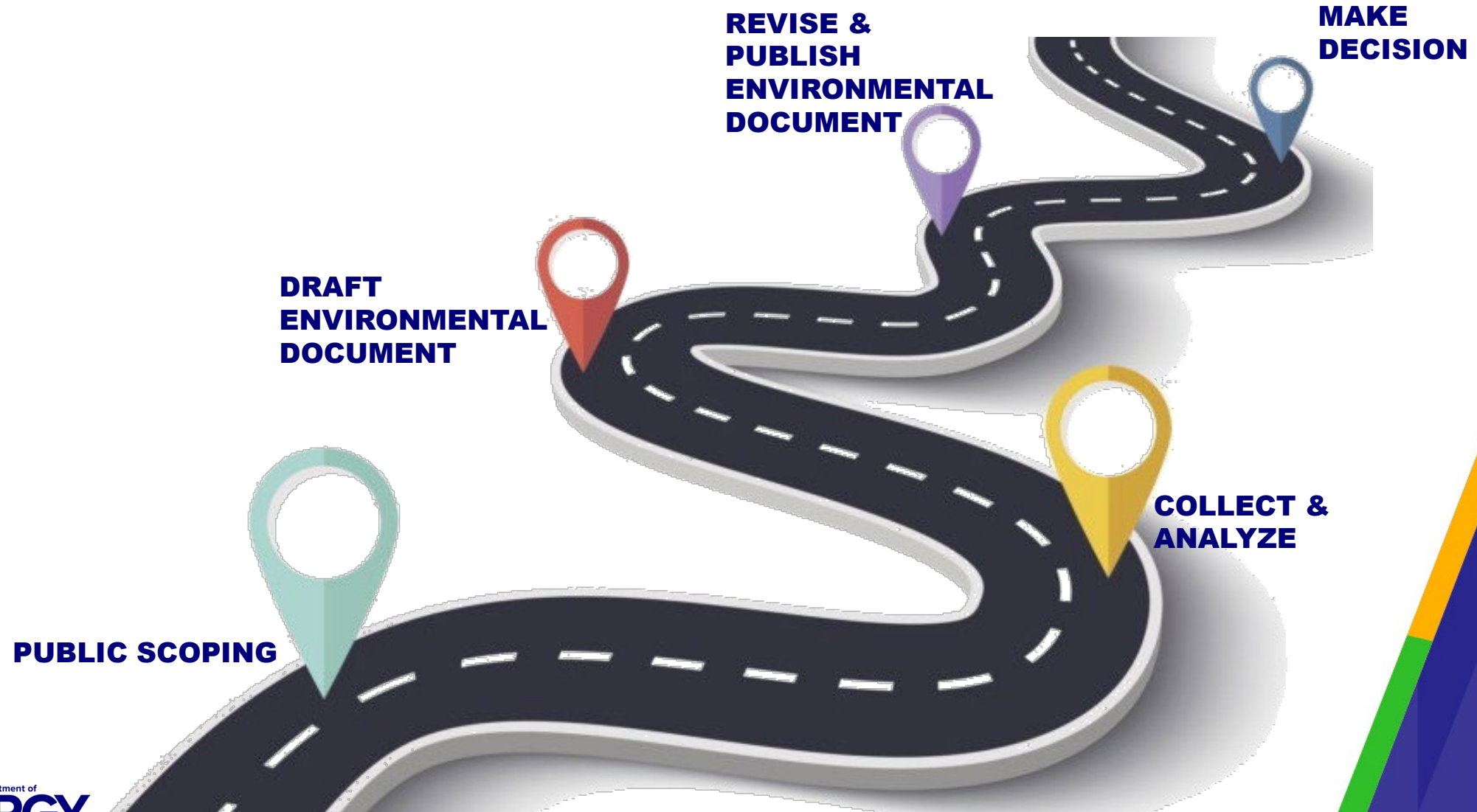
GDO works in partnership with states, tribes, territories, industry, communities, and other energy sector stakeholders to deploy solutions to lower energy costs and improve grid reliability and resilience.



# PRESIDENTIAL PERMITS

- Presidential permits authorize the construction, maintenance, and operation of an electric transmission facility at the U.S. international border.
- The President has delegated authority to issue Presidential permits to DOE.
- Before issuing a Presidential permit, DOE must evaluate whether a proposed electric transmission facility is in the public's best interest. As part of this evaluation, DOE will conduct an environmental analysis under the National Environmental Policy Act (NEPA)
- Additionally, DOE must determine a proposed project's impact on the reliability of the U.S. electric grid.
- DOE's analysis is open to public review and comment throughout the permitting period.

# NATIONAL ENVIRONMENTAL POLICY ACT (NEPA)





# PUBLIC COMMENT SUBMISSION

How to comment on Basin Electric's Presidential permit application:

- **Submit** your comment on paper during today's meeting.
  - Please use the comment sheets we have available.
- **Email** [BasinElectricNEPA@hq.doe.gov](mailto:BasinElectricNEPA@hq.doe.gov) with your comment (preferred).
  - Please include "PP-503 Basin Electric Power Cooperative Presidential Permit" in the subject line.
- **Call** +1-866-606-7553 and leave a voice message.
- **Mail** in your comment to the following address:

Ms. Ashleigh Angel  
U.S. Department of Energy  
Grid Deployment Office  
1000 Independence Ave SW, Suite 4H-065  
Washington, DC 20585

**The public must submit  
all comments by  
November 29th, 2024 at  
11:59 pm CDT for  
consideration.**



# QUESTIONS?

\*Please note that any questions will not be recorded as official comments unless submitted in writing in-person, or by mail, email or phone.\*





**BASIN ELECTRIC  
POWER COOPERATIVE**

A Touchstone Energy® Cooperative 

# **Wheelock and Tande-to-Saskatchewan 230-kV Transmission Project**

# Agenda

---

Basin Electric Power Cooperative Overview

---

Regional Transmission Organization (RTO) - SPP

---

Wheelock and Tande-to-Saskatchewan 230-kV Project

---

Project Schedule

---

Construction

---

# Basin Electric Snapshot

140 Members in 9 States

3 million consumer-owners

Over 7,000 megawatts  
of winter capability

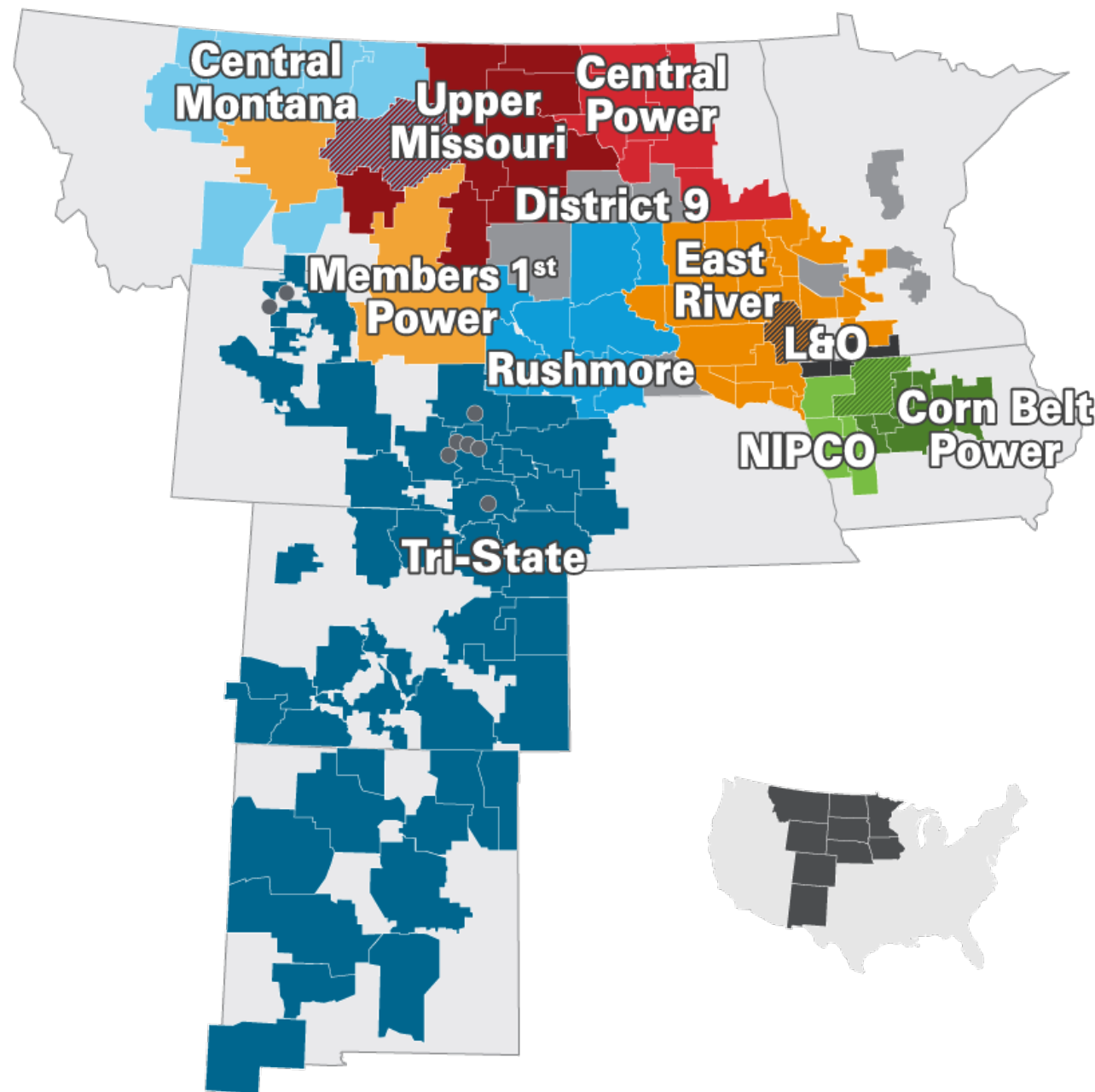
2,500+ miles of transmission

Largest G&T MWh sales and  
geographic territory served

2nd largest G&T by assets

3<sup>rd</sup> largest by operating revenue

January 2024 Peak Demand  
Record - 5,130 MW



# Southwest Power Pool (SPP)

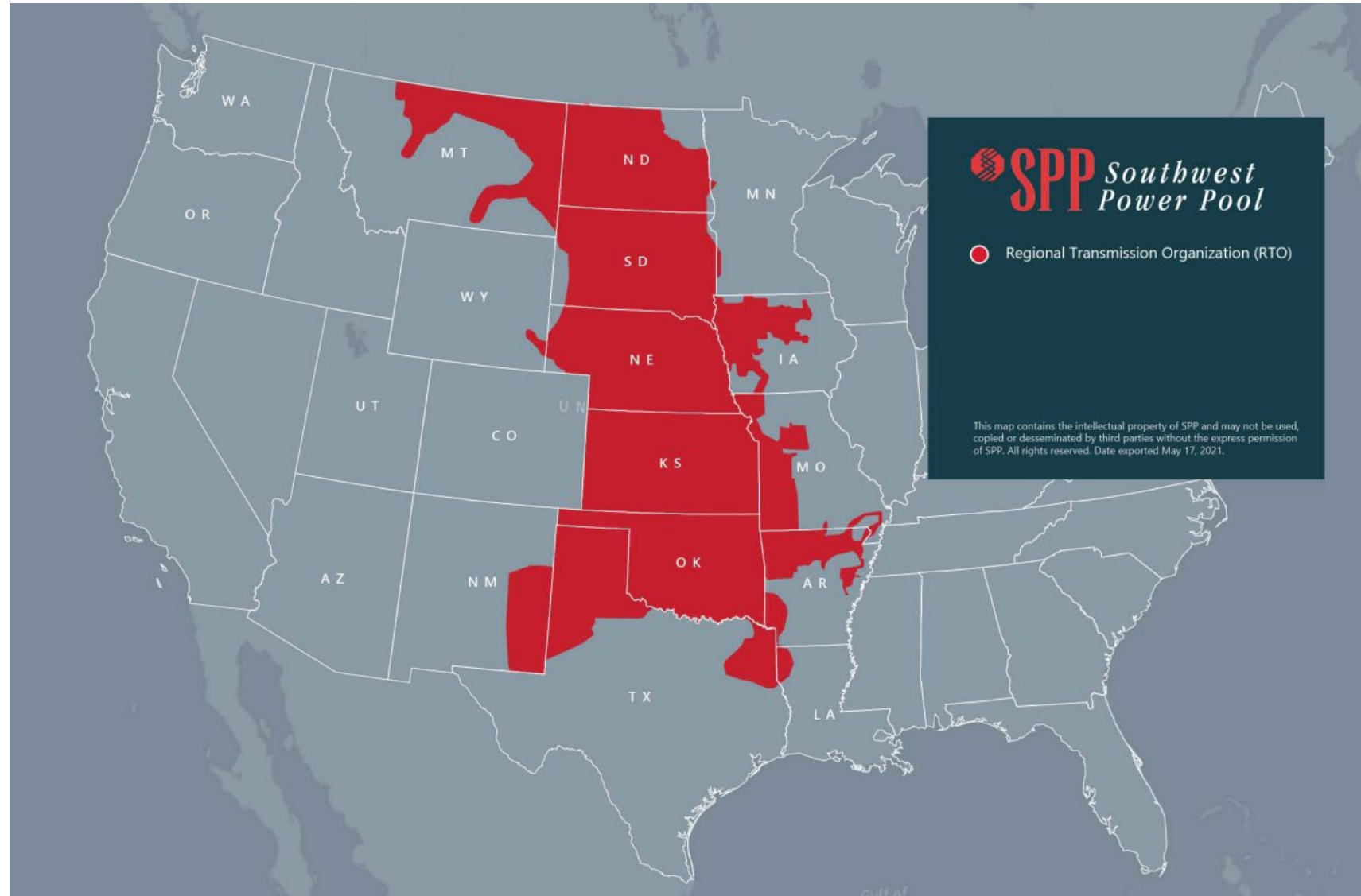


TRANSMISSION OWNER



REGIONAL TRANSMISSION ORGANIZATION

SPP is a regional transmission organization (RTO): a nonprofit corporation mandated by the Federal Energy Regulatory Commission to ensure reliable supplies of power, adequate transmission infrastructure and competitive wholesale electricity prices on behalf of its members.



# Notice to Construct (NTC)

SaskPower requested transmission service from SPP's Open Access Tariff for 650MW

Requests were studied in SPP's 2021 Aggregate Transmission Service Study (ATSS) study cluster two. (AG2-2021)

SPP identified deficiencies in the transfer capability between US and Canada.

Coordination between SPP, Basin Electric, and SaskPower to identify mitigating projects

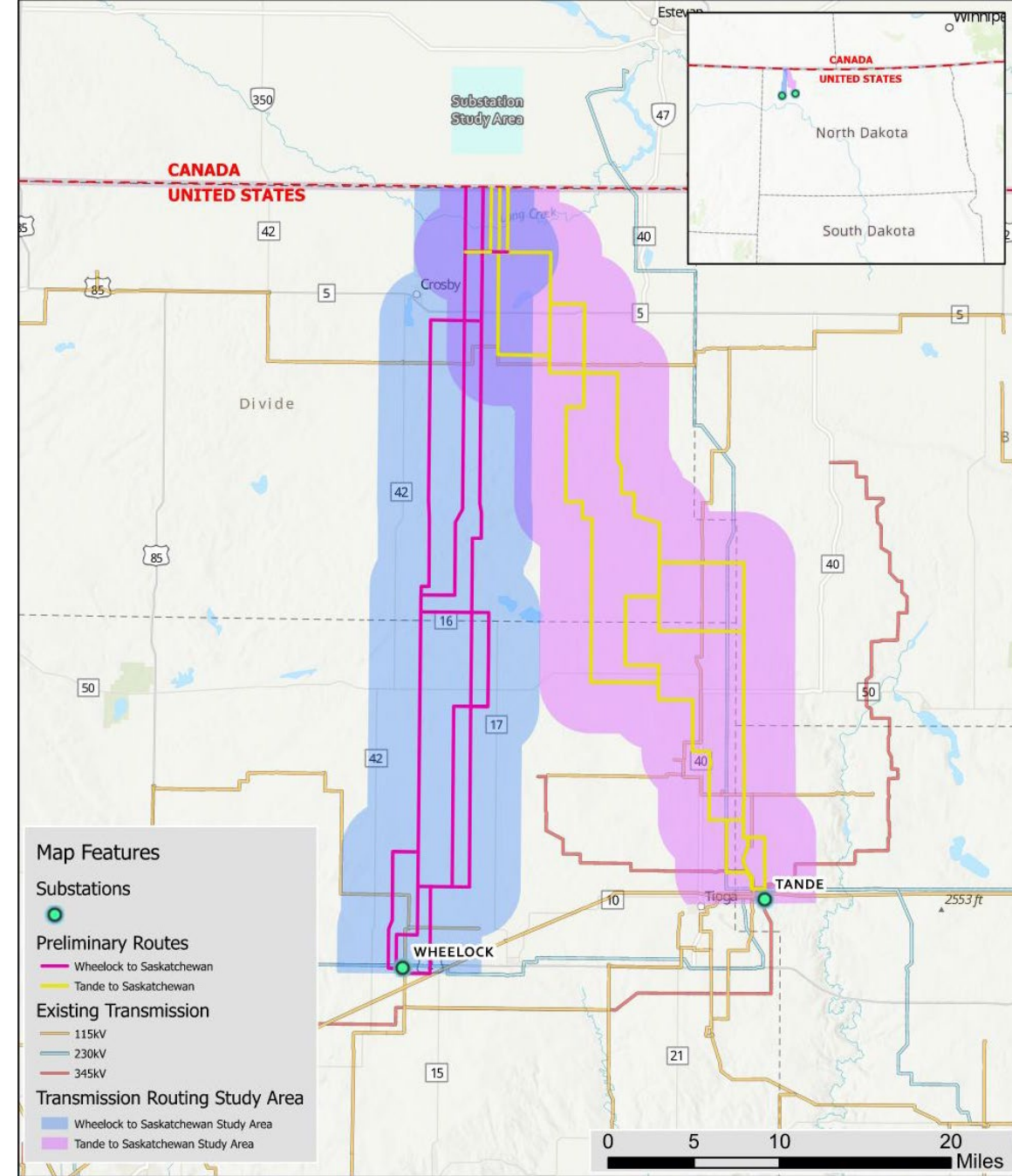
SPP issued an NTC-C on July 8, 2022 for the "project". Basin Board accepted in September, 2022



# Project Scope

## SPP Notice to Construct Scope includes:

- Wheelock 230-kV Terminal Upgrade
- Tande 230-kV Terminal Upgrade
- Build new 230-kV transmission line from Wheelock to US/Canada Border – crossing location coordinated with SaskPower
- Build new 230-kV transmission line from Tande substation to US/Canada Border – crossing location coordinated with SaskPower





# Basin Electric Transmission Line Routing Criteria

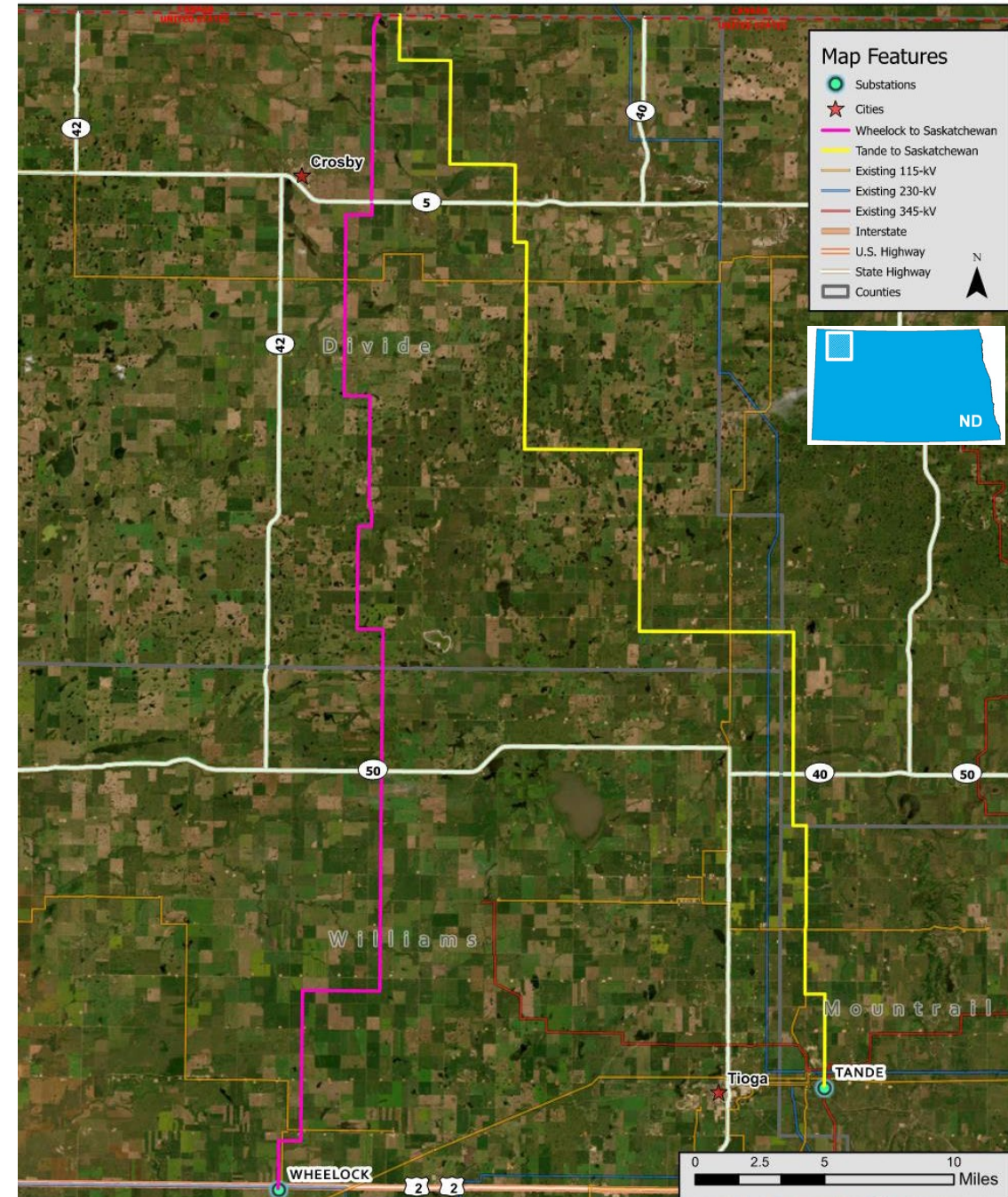
- Landowner feedback
- Follow property/quarter lines where possible
- ND-PSC Avoidance and Exclusion Areas
- Minimize disturbance to cultivated croplands
- Avoid areas with identified recreational significance
- Minimize interference with oil and gas development
- Minimize engineering, construction, and maintenance hazards
- Avoid/span all wetlands, where possible
- Avoid areas less suitable for construction and operation (rugged terrain, steep slopes, lacking reasonable access)



# Proposed Transmission Alignments

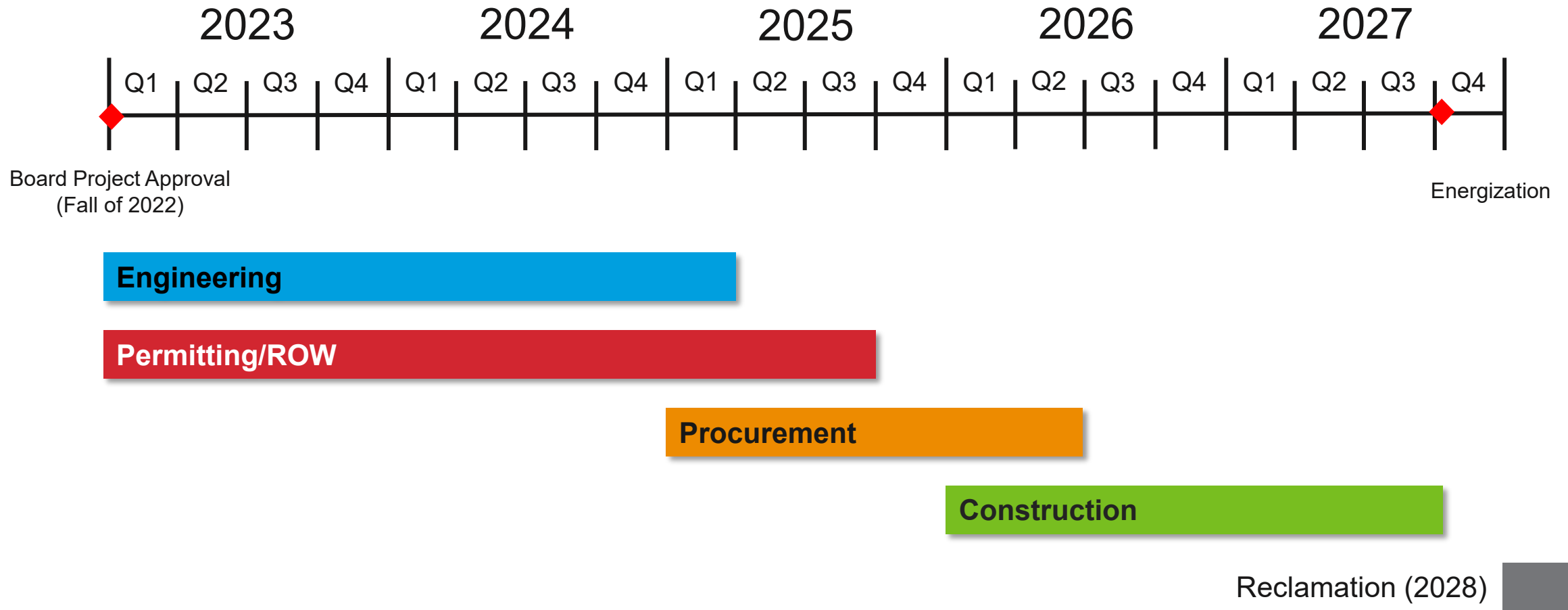
## Next steps:

- Final route surveys ongoing
- ROW acquisition in progress
- Detailed structure design
- Utility and road crossing permits
- Federal, State, County, Township Permits
- Material and construction contracts





# Wheelock/Tande to Saskatchewan Transmission Project Schedule



# Foundation Installation (Angle Structure only)



Foundation Installation



# Structure Framing and Setting



Structure Framing



Structure Setting



# Wire Stringing



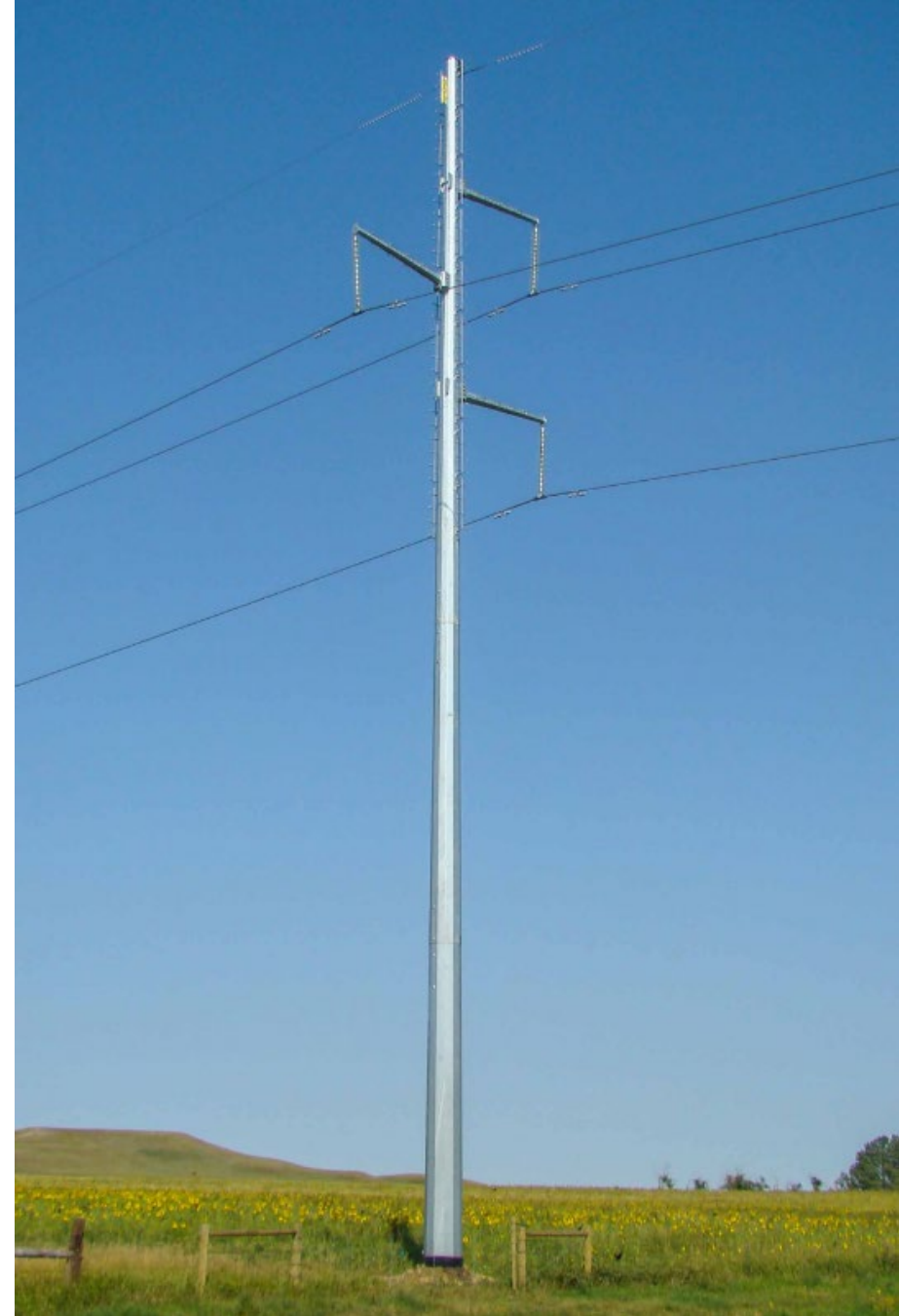
# Post-Construction

## Reclamation

- Restore work areas and access
- Compensate landowners for crop damages and perform decompaction as needed
- In pasture-land, re-seed to the NRCS/landowner approved mix.
- Trees will be replaced in accordance with ND-PSC tree and shrub mitigation plan
- Basin Electric responsible for providing weed control during and after construction

## Operation and Maintenance

- Inspect line periodically via air or ground
- Manage vegetation to prevent trees from causing fires or outages





- Established 14 years ago in environmental consulting
- Experienced in North Dakota resource evaluation
- Permitting for linear projects (transmission lines, pipelines)
- GIS Capabilities



- Established 35 years ago in environmental consulting
- Experienced in NEPA compliance, permitting, ecological assessment
- Performed dozens of EISs and EAs



# Cultural Resources

## **Class I: Cultural Resources Literature Review Completed**

## **Class III: Cultural Resources Pedestrian Survey**

- Tande Alignment 65% Complete
- Wheelock Alignment 65% Complete

## **Cultural Heritage Sites & National Registry of Historic Places**

- Any Sites identified in Study Area would be considered and coordinated with the appropriate Resource Agency
- Direct Impacts will be avoided/minimized through transmission line routing and construction practices
- Any Visual Impacts will be evaluated



# Natural Resources

## Areas of Concern:

- USFWS Wetland and Grassland Easements
- FSA Conservation Reserve Program parcels
- Land Cover in the Study Area
- Land Use

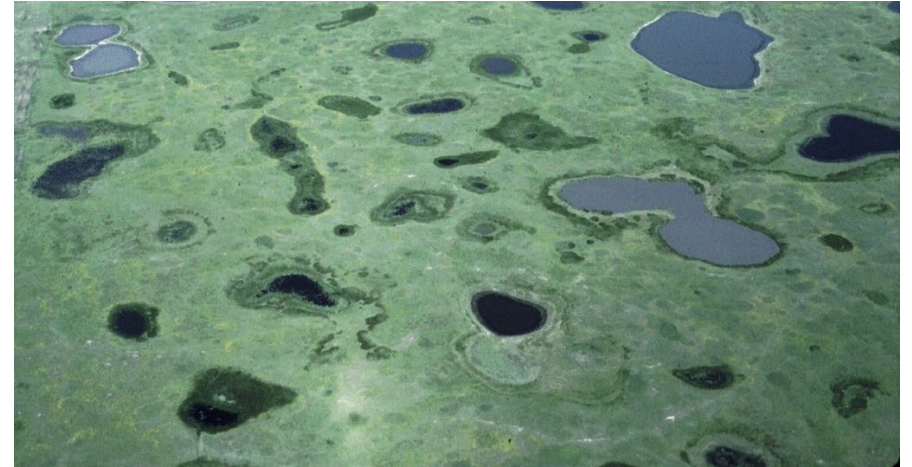
## Natural Resources Surveys

(Tande 71% Complete; Wheelock 72% Complete)

- Wetlands
- Habitat for Threatened and Endangered Species
- Noxious Weeds
- Trees
- Grassland

## Areas of No Concern:

- Navigable Waterways or Sovereign Lands
- Indian Lands, Indian Reservations, or Indian Trust Lands
- Floodplains



Pothole Wetlands (USFWS)



Grassland (Krista Lundgren, USFWS)



# Natural Resources

## Wildlife Species of Concern



Whooping Crane  
(ND Game & Fish)



Bald Eagles  
(Tom Koerner, USFWS)

Species	Status	Critical Habitat
Northern Long-eared Bat	Threatened	No designated critical habitat.
Piping Plover	Threatened	The Project is outside the designated critical habitat.
Red Knot	Threatened	No designated critical habitat.
Whooping Crane	Endangered	The Project is outside the designated critical habitat.
Dakota Skipper	Threatened	The Project is outside the designated critical habitat.
Monarch Butterfly	Candidate	No designated critical habitat.
Bald Eagle	Protected	The Project is within the secondary range of key nesting areas.
Golden Eagle	Protected	The Project is outside the range for nest site selection.

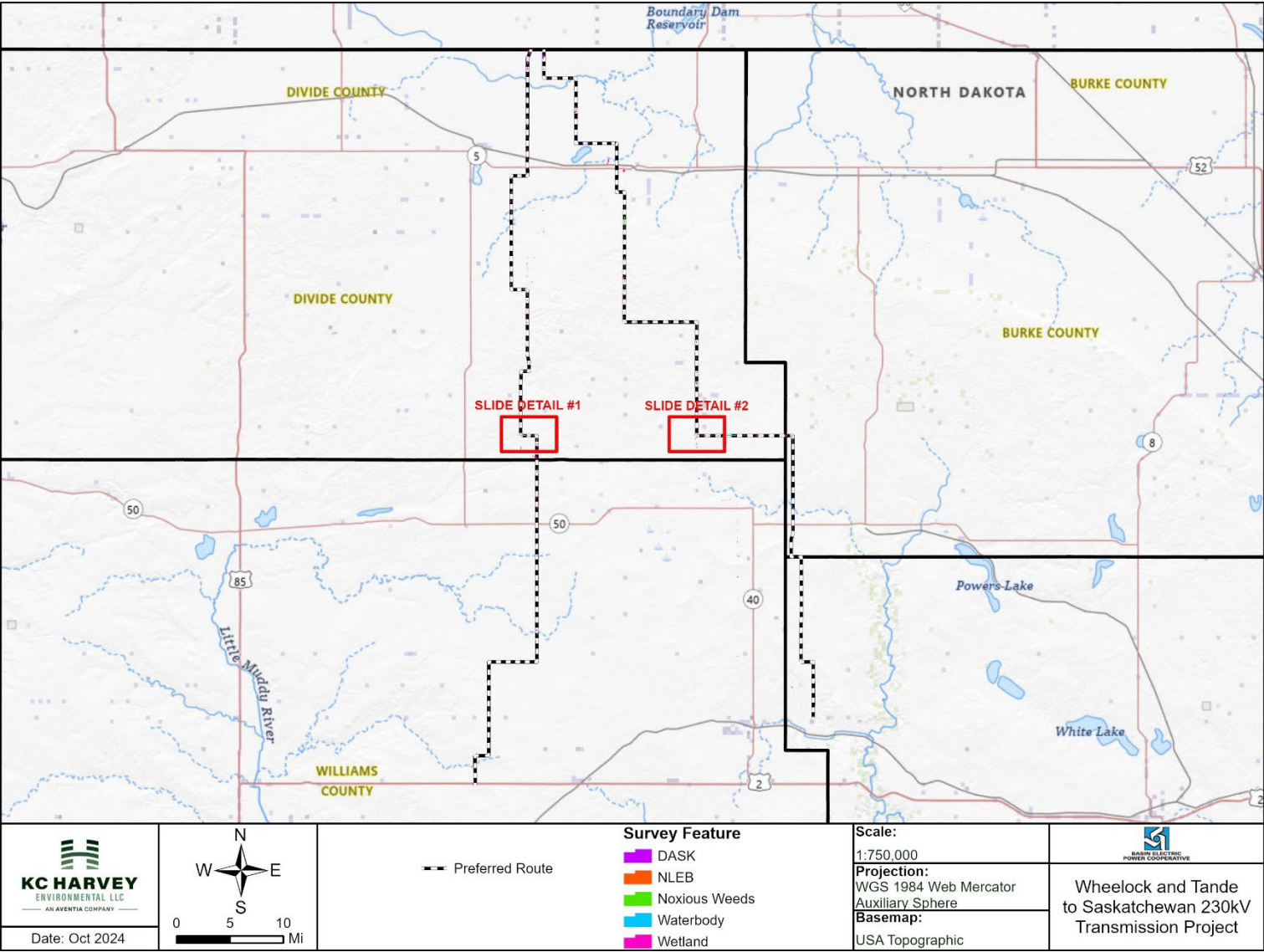


Monarch Butterfly  
(USGS)



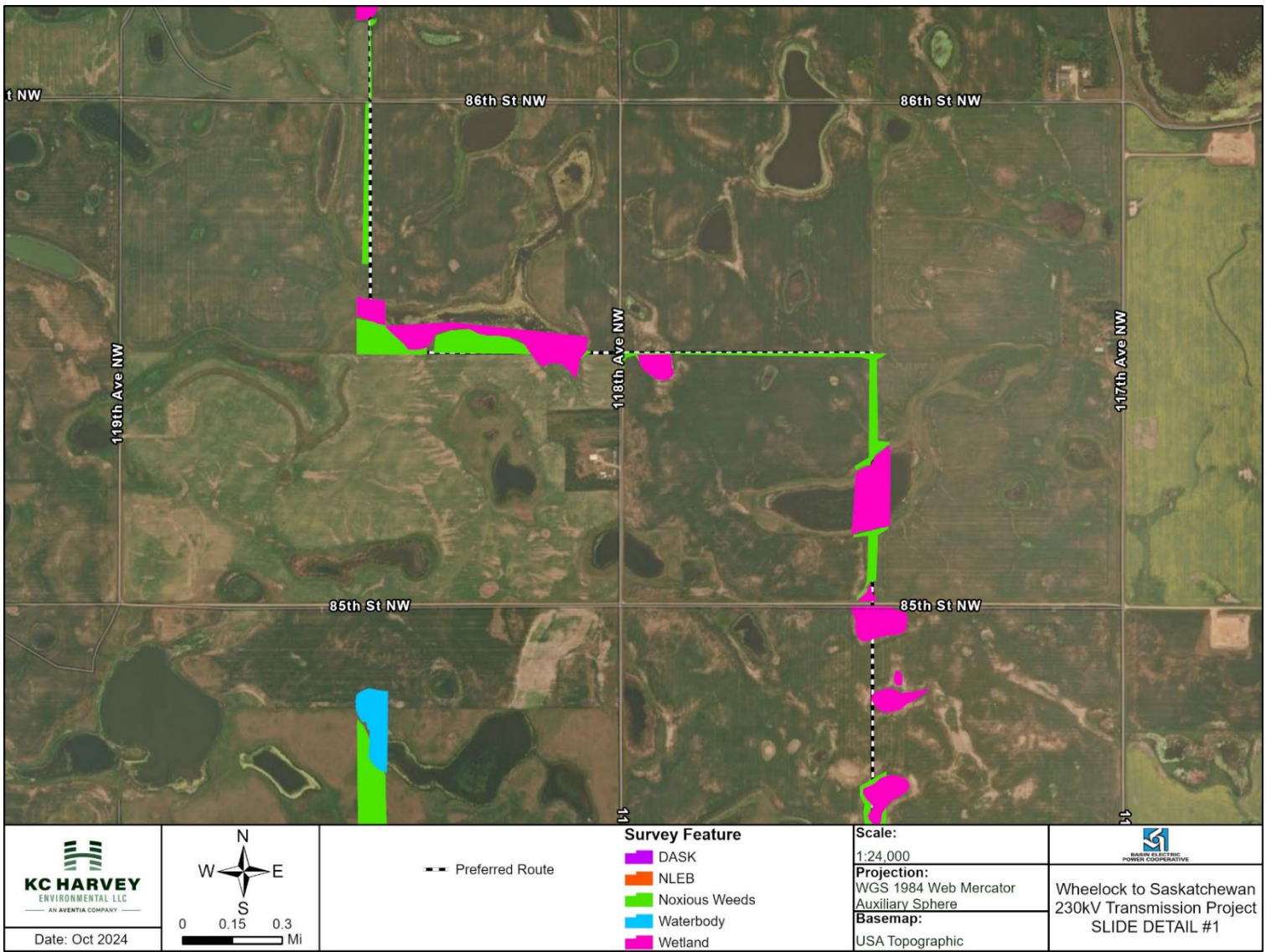
Dakota Skipper  
(Adrienne Antonsen, NDGF)

# Study Area Map

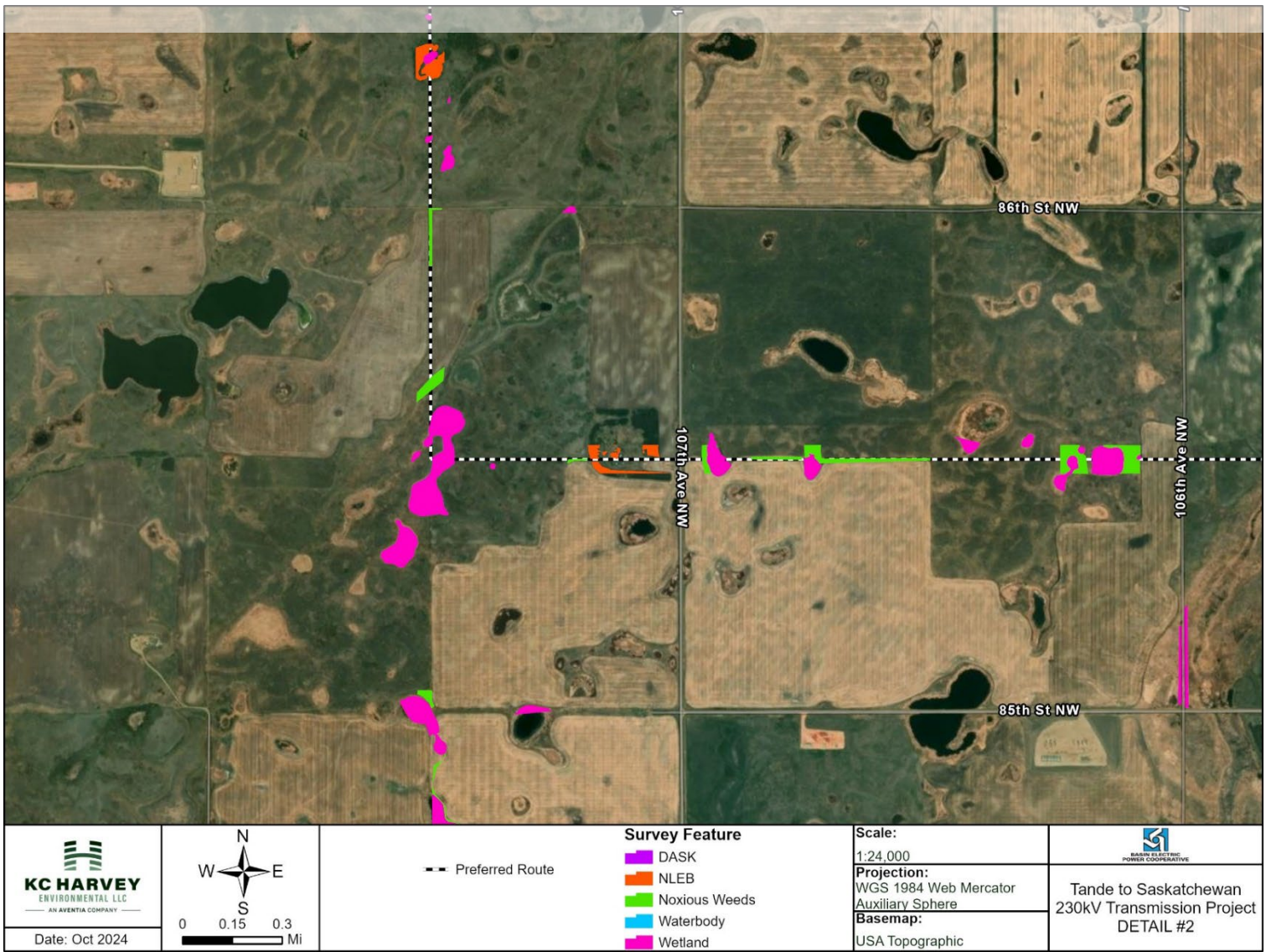




# Study Area Detail Slide 1



# Study Area Detail Slide 2







# PUBLIC COMMENT SUBMISSION

How to comment on Basin Electric's Presidential permit application:

- **Submit** your comment on paper during today's meeting.
  - Please use the comment sheets we have available.
- **Email** [BasinElectricNEPA@hq.doe.gov](mailto:BasinElectricNEPA@hq.doe.gov) with your comment (preferred).
  - Please include "PP-503 Basin Electric Power Cooperative Presidential Permit" in the subject line.
- **Call** +1-866-606-7553 and leave a voice message.
- **Mail** in your comment to the following address:

Ms. Ashleigh Angel  
U.S. Department of Energy  
Grid Deployment Office  
1000 Independence Ave SW, Suite 4H-065  
Washington, DC 20585

**The public must submit  
all comments by  
November 29th, 2024 at  
11:59 pm CDT for  
consideration.**



# QUESTIONS?

\*Please note that any questions will not be recorded as official comments unless submitted in writing in-person, or by mail, email or phone.\*