



North Plains Connector Project

Virtual Public Meeting

November 19, 2024



HOUSEKEEPING

RECORDING

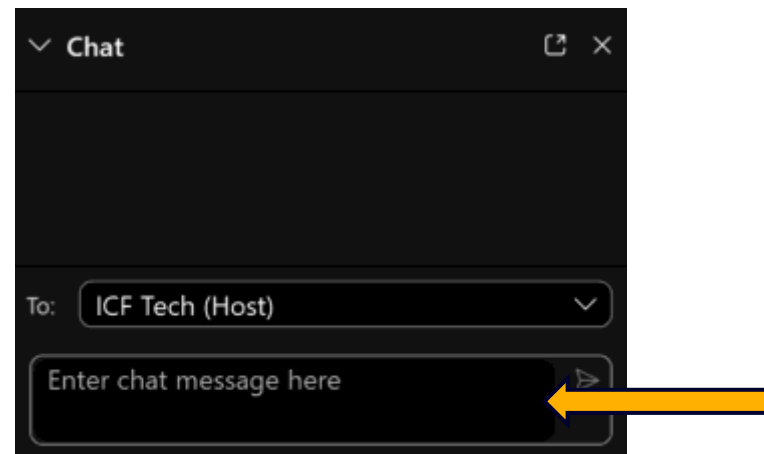
- This workshop will be recorded and made available on the Department of Energy's North Plains Connector webpage: www.energy.gov/nepa/doeis-0568-north-plains-connector-multiple-locations

NO AI MEETING ASSISTANTS

- Third-party AI meeting assistants are not allowed in this meeting. Any unverified or suspicious meeting participants will be removed and/or not admitted at all. If one is found operating in the call during the meeting, the owner or user will be contacted to have the records deleted.

TECHNICAL ISSUES OR QUESTIONS?

- Please type them in the Chat.



HOW TO COMMENT

ALL COMMENTS MUST BE SUBMITTED IN WRITING VIA EMAIL OR MAIL.

We will not accept any oral comments.

OFFICIAL COMMENTS

Email: northplainsconnector@hq.doe.gov

Mail: Rebecca “RJ” Boyle, NPC NEPA Document Manager
U.S. Department of Energy, Grid Deployment Office
1000 Independence Avenue SW
Washington, DC 20585

AGENDA

- Statutory/Regulatory Processes: Why are we here? What is NEPA?
 - Agency Roles and Responsibilities
 - Project Timeline
- Project Overview
 - Purpose and Need
 - Project Map and Project Components
 - Route Alternatives
- How to Comment on the NPC
- Open Q&A



WHY ARE WE HERE TODAY?

WHAT IS NEPA?

WHAT IS AN ENVIRONMENTAL IMPACT STATEMENT?

**WHY ARE THE DEPARTMENT OF ENERGY AND THE
MONTANA DEPARTMENT OF ENVIRONMENTAL QUALITY
INVOLVED?**

STATUTORY/REGULATORY PROCESSES

**National Environmental
Policy Act (NEPA)**



Federal Agencies:

Bureau of Land Management

US Forest Service

Agricultural Research Service

**Montana Major
Facility Siting Act
(MFSA)**



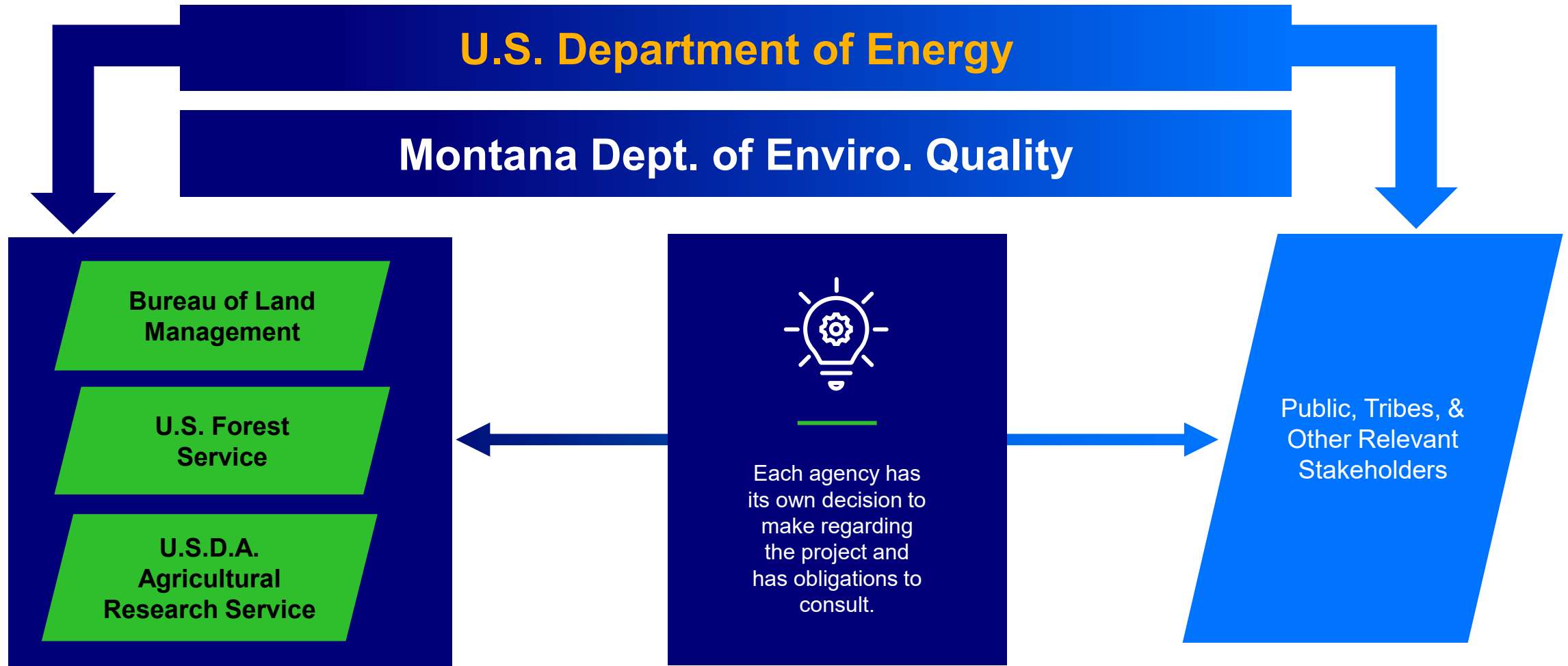
**Montana
Environmental Policy
Act (MEPA)**



State Agency:

**Montana Department of
Environmental Quality**

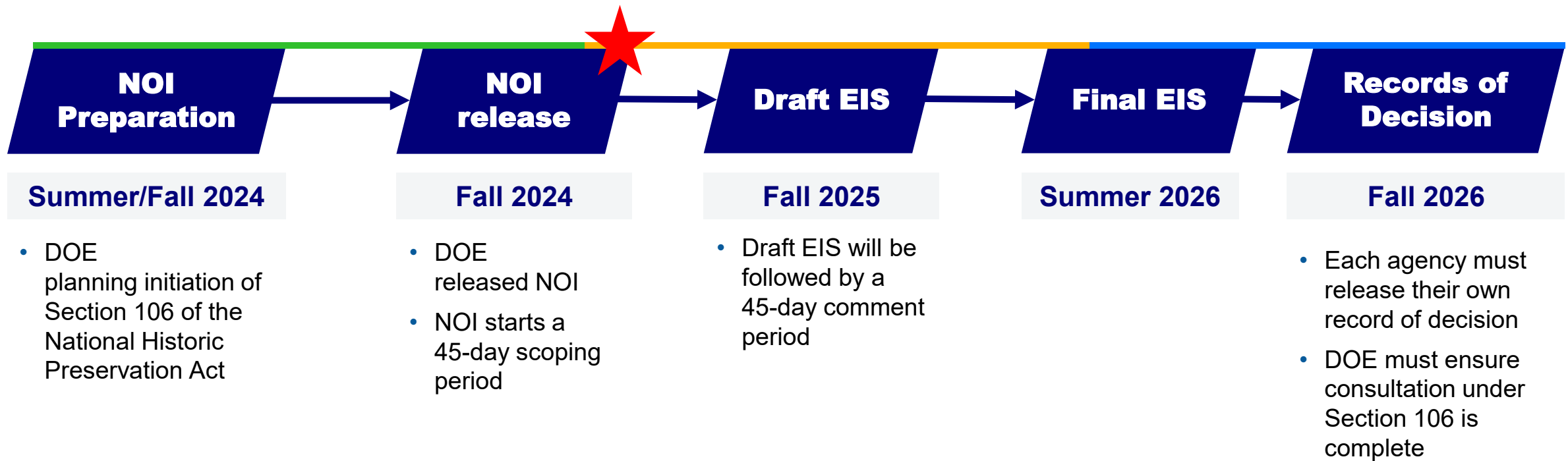
AGENCY ROLES AND RESPONSIBILITIES



WHAT IS SCOPING, AND WHY SHOULD I SUBMIT COMMENTS?

- Scoping is required for preparing an Environmental Impact Statement (EIS).
- Scoping is used to engage state, local, and Tribal governments and the public in early identification of concerns, potential impacts, relevant effects of previous federal actions, and possible alternatives.
- Scoping also brings agencies and project applicants together to lay the groundwork for setting time limits, expediting reviews where possible, integrating other environmental reviews, and identifying any major obstacles that could delay the process.
- Scoping is a process that continues throughout the planning and early stages of preparing an EIS. Comments received today will help inform the Draft and Final EIS

PROJECT TIMELINE



ENVIRONMENTAL REVIEW TIMELINE

Task	Date
DOE PUBLISHES NOTICE OF INTENT TO PREPARE EIS; PUBLIC SCOPING PERIOD BEGINS	10/25/2024
IN-PERSON SCOPING MEETING: MANDAN, ND	11/6/2024
IN-PERSON SCOPING MEETING: DICKINSON, ND	11/7/2024
IN-PERSON SCOPING MEETING: MILES CITY, MT	11/12/2024
IN-PERSON SCOPING MEETING: COLSTRIP, MT	11/13/2024
VIRTUAL SCOPING MEETING	11/19/2024
PUBLIC SCOPING PERIOD ENDS	12/9/2024
DOE PUBLISHES DRAFT EIS; 45-DAY COMMENT PERIOD BEGINS	FALL 2025

ENVIRONMENTAL REVIEW TIMELINE (CONT.)

Task	Date
PUBLICATION OF FINAL EIS	SUMMER 2026
FEDERAL AGENCIES (BLM, USFS, ARS) RELEASE RECORDS OF DECISION	SUMMER/FALL 2026
ENVIRONMENTAL REVIEW PROCESS ENDS	FALL 2026



**NOW THAT WE UNDERSTAND
THE REGULATORY
PROCESSES...WHAT IS THE
NORTH PLAINS CONNECTOR?**

PROJECT OVERVIEW

- The North Plains Connector (NPC) is a proposed 525-kilovolt (kV), high-voltage direct-current (HVDC) overhead transmission line that would provide 3,000 megawatts (MW) of bi-directional transfer capability and connect the Western and Eastern Interconnections.
- As proposed, the NPC would run from Colstrip, MT to two separate end points in North Dakota: one near Center and the other near St. Anthony.
- The NPC would sell or transfer electricity transmission capacity without preference to a particular generation technology.
- Portions of the NPC or capacity rights may be owned by electric utilities, cooperatives, government entities, corporate energy providers, or independent generators in the regional power systems.

PURPOSE AND NEED

1

Increase electric grid reliability for both the eastern and western grids.

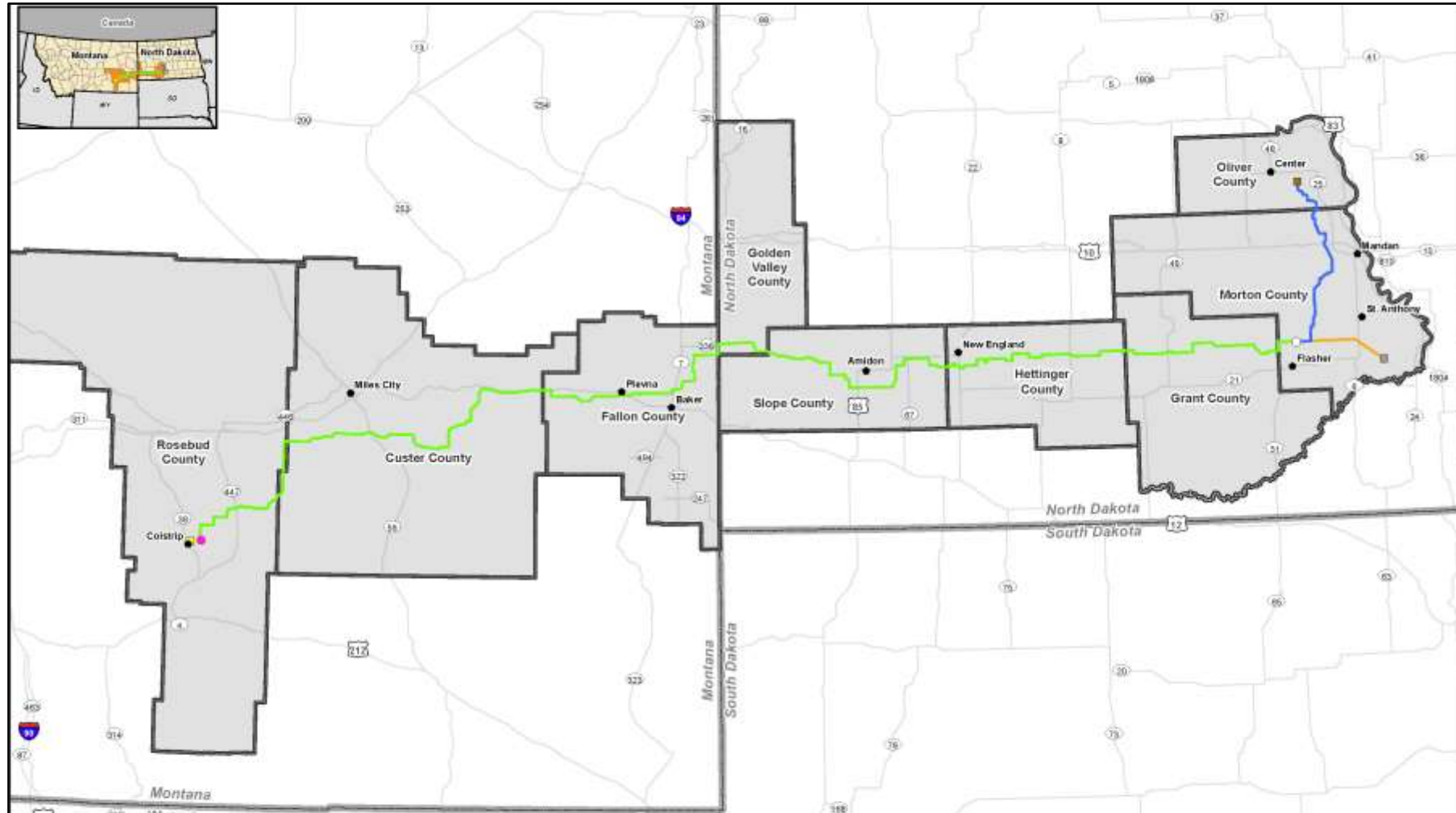
2

Unlock new markets for energy generation.

3

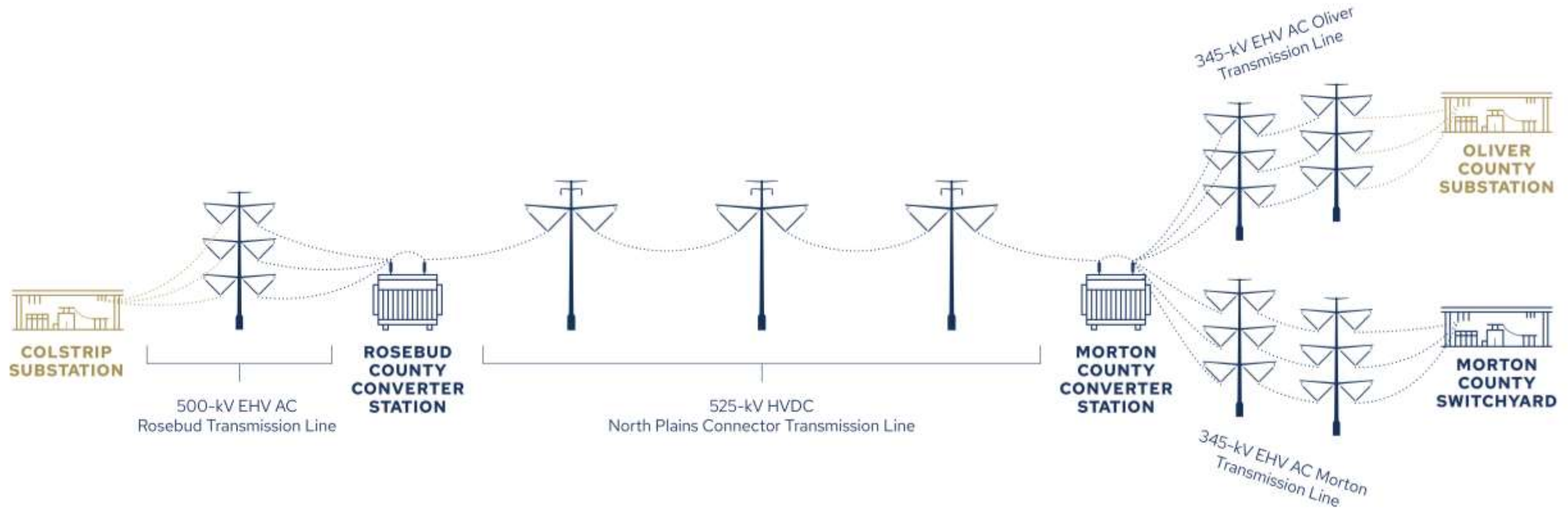
Mitigate weather-driven system outages by enabling grid operators to quickly and efficiently shift power to where it is needed most.

PROJECT OVERVIEW MAP



PROJECT DESIGN

MAJOR FACILITY COMPONENTS

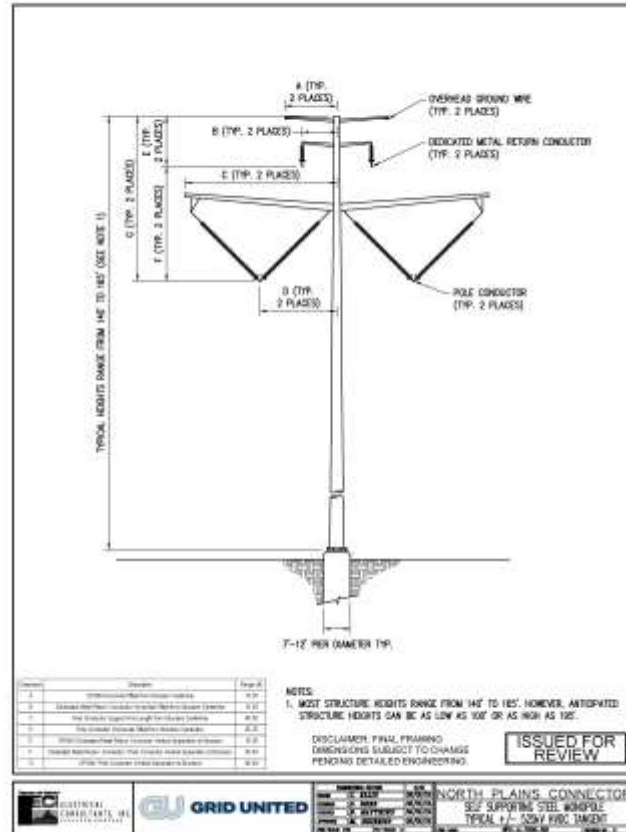


LEGEND

-  New project infrastructure
-  Pre-existing infrastructure / Future planned / Not part of project

TRANSMISSION LINE STRUCTURES

High Voltage Direct Current (HVDC)



High Voltage Alternating Current (HVAC)

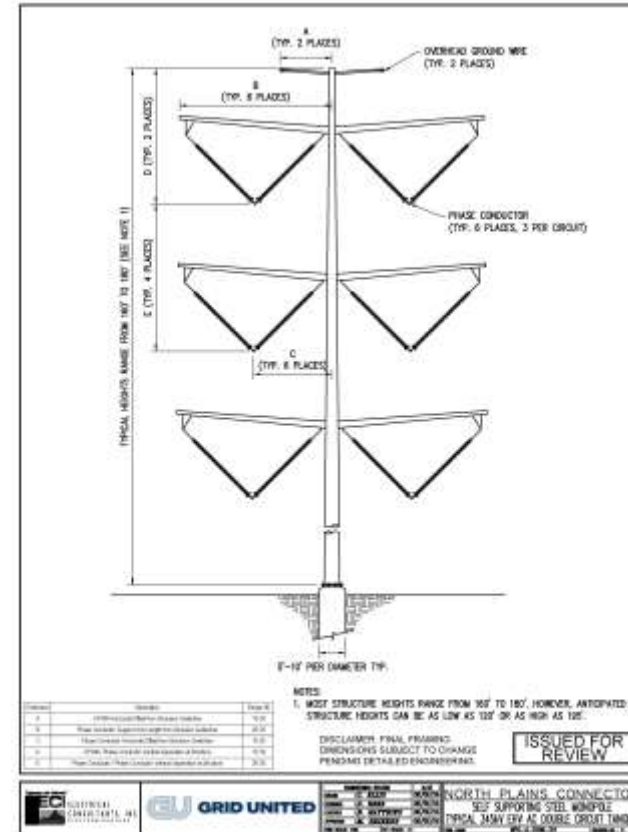
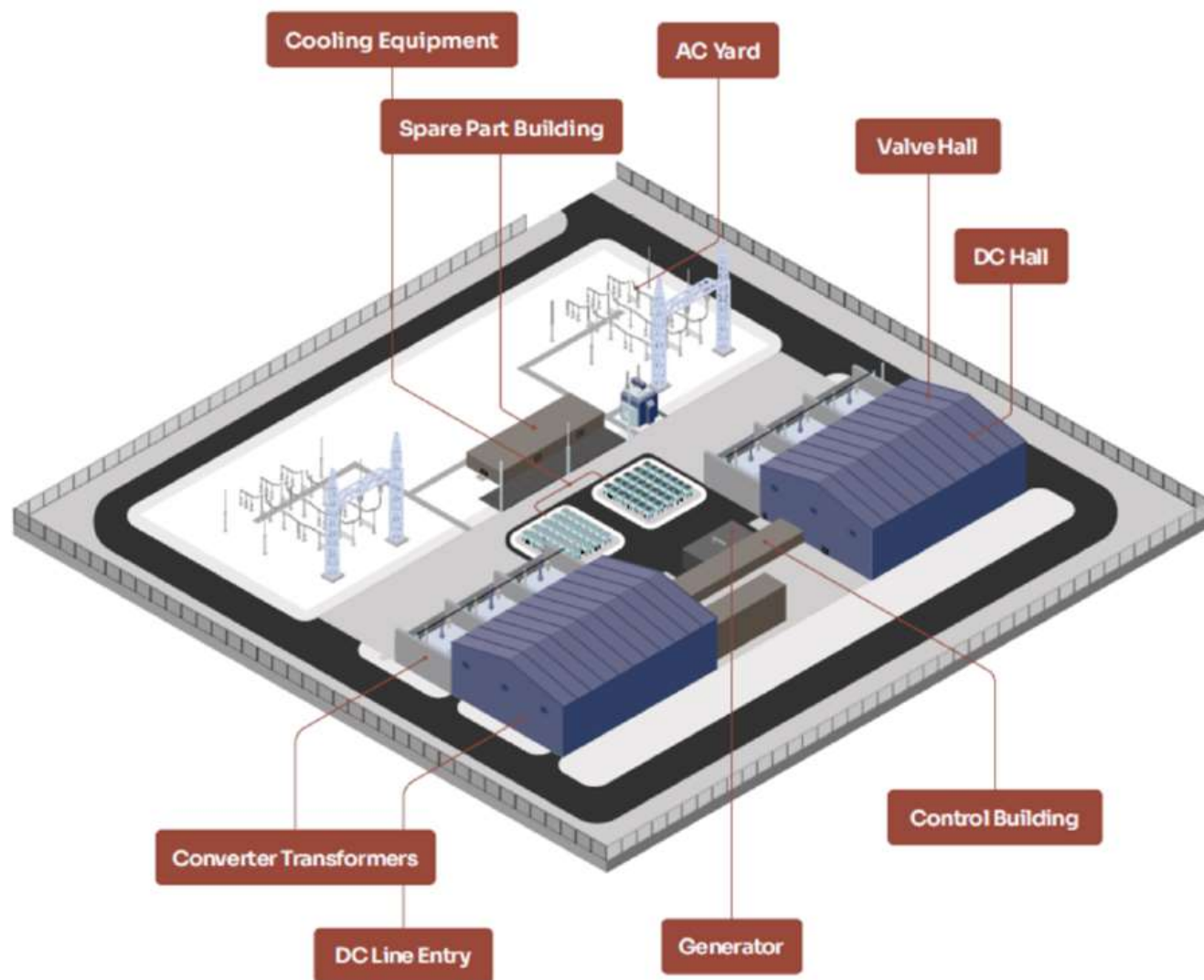
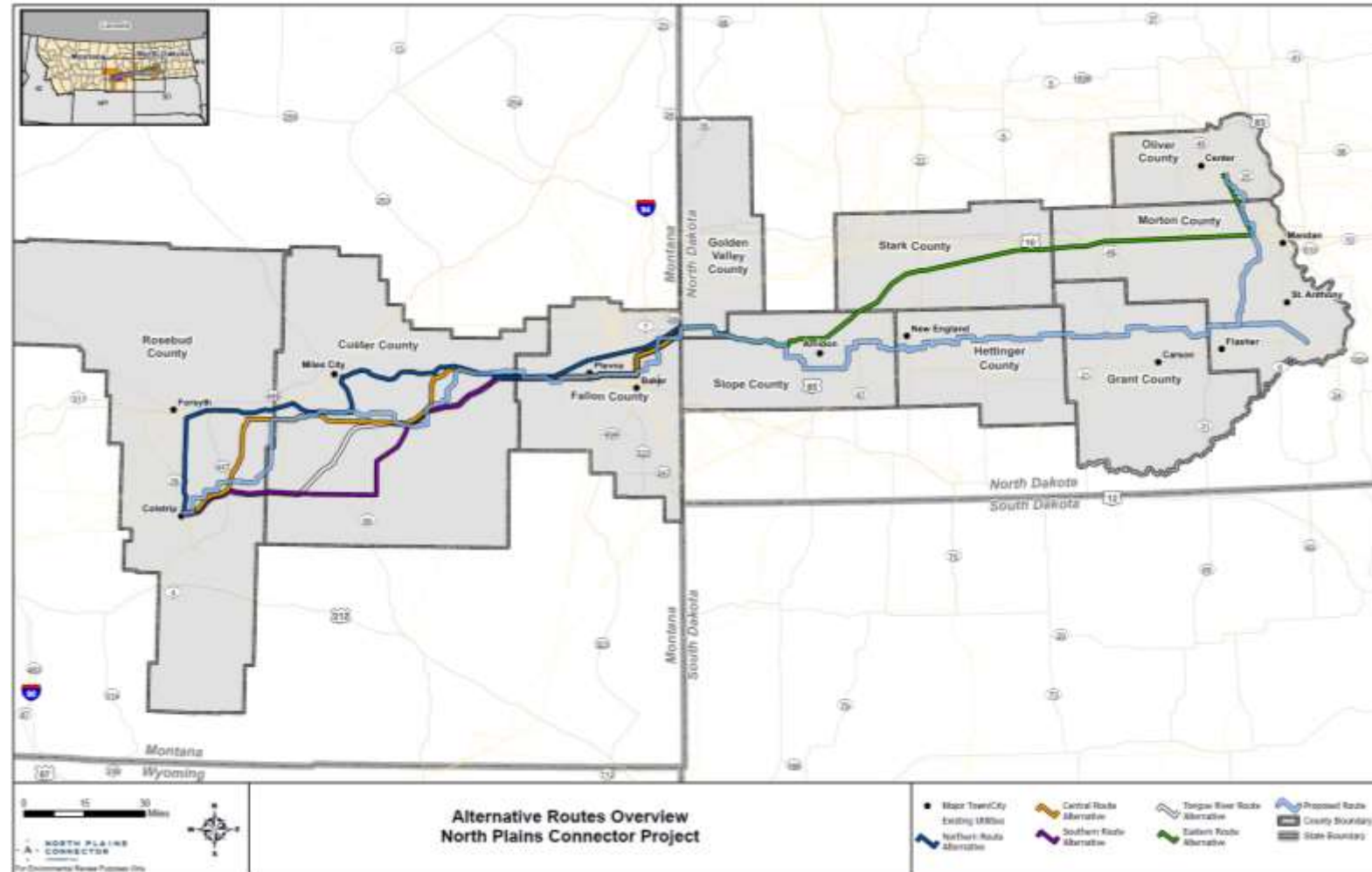


DIAGRAM OF TYPICAL CONVERTER STATION

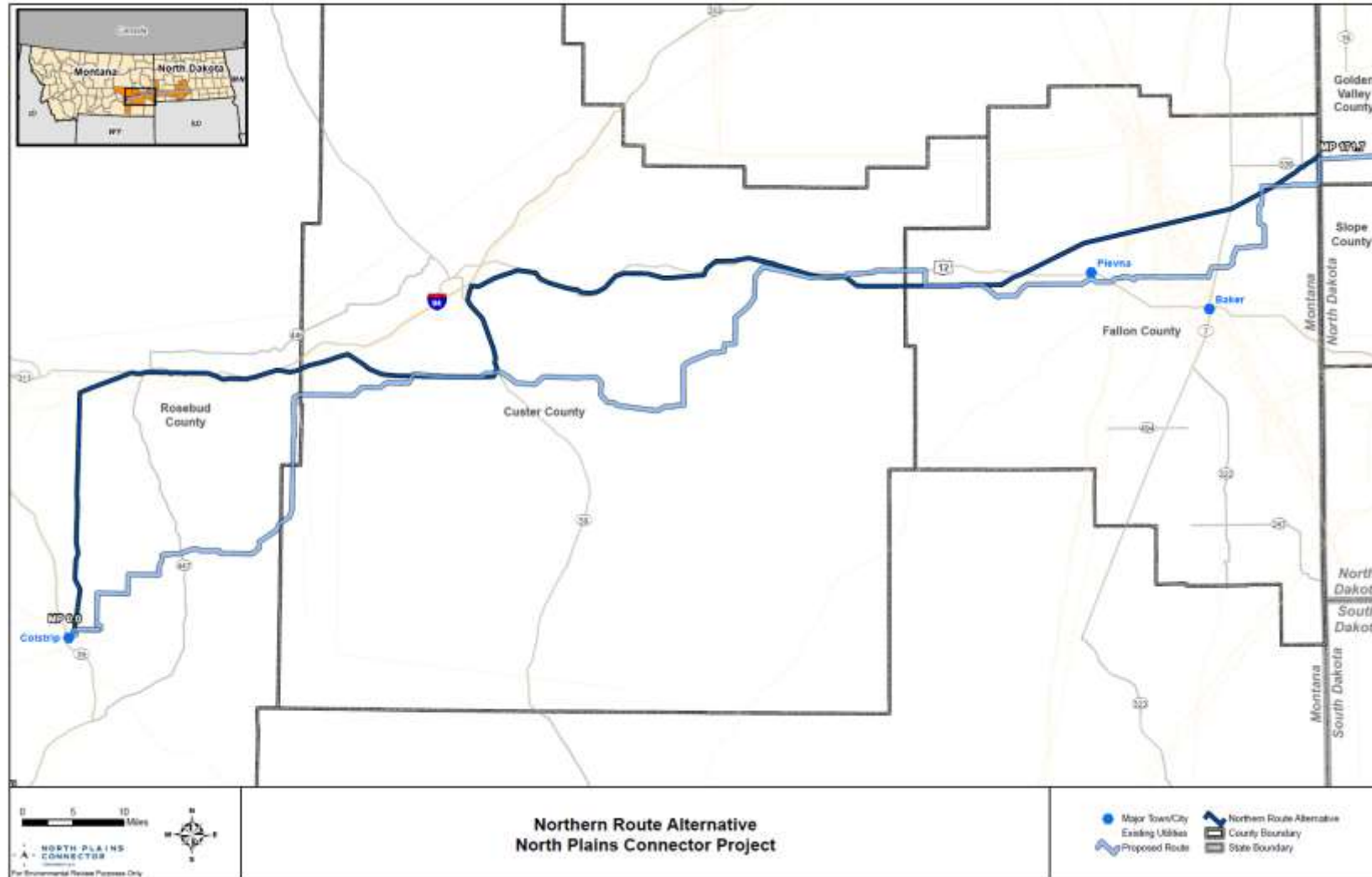


PROJECT ALTERNATIVES OVERVIEW MAP



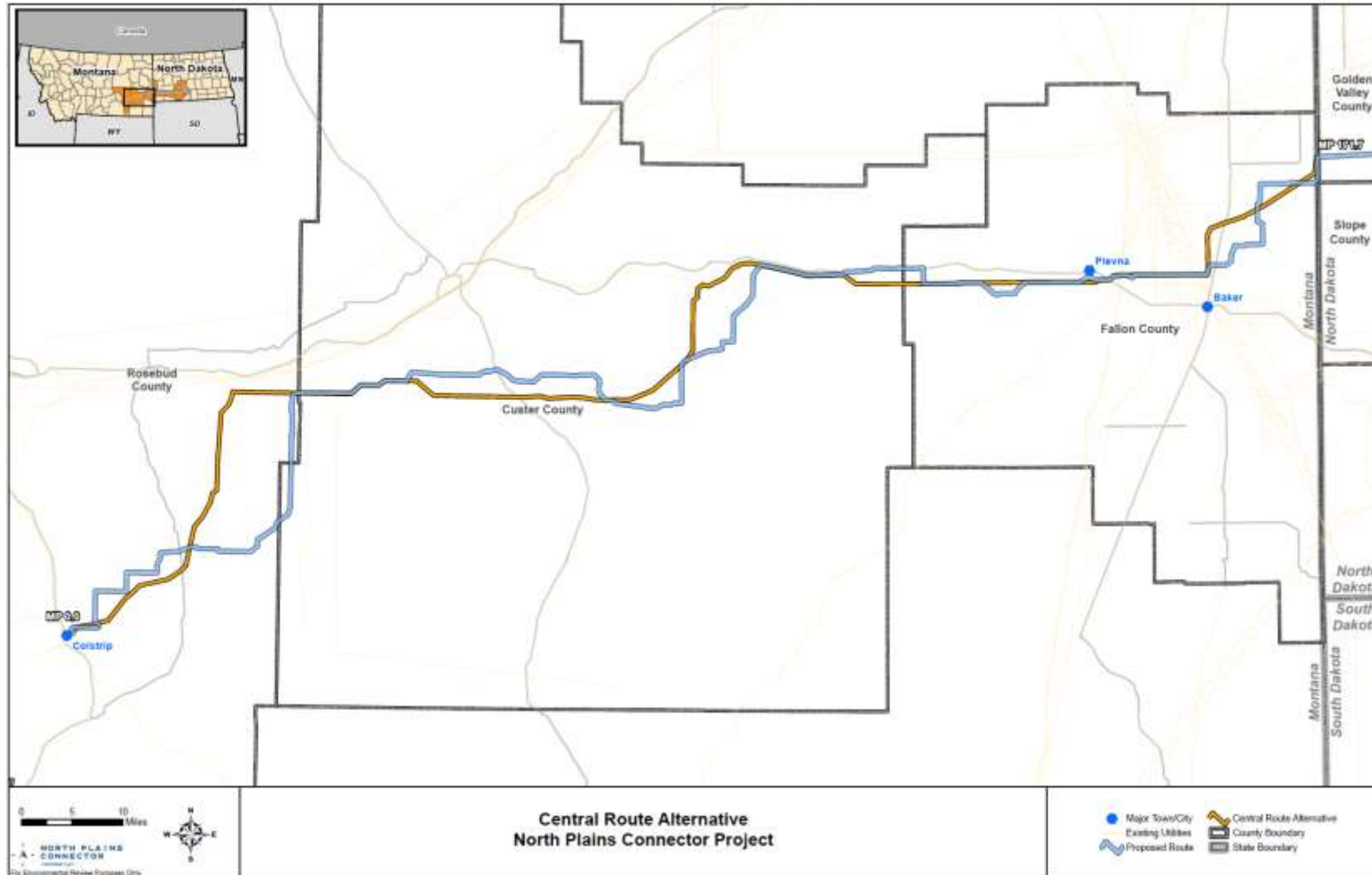
ALTERNATE OPTION

NORTHERN ROUTE



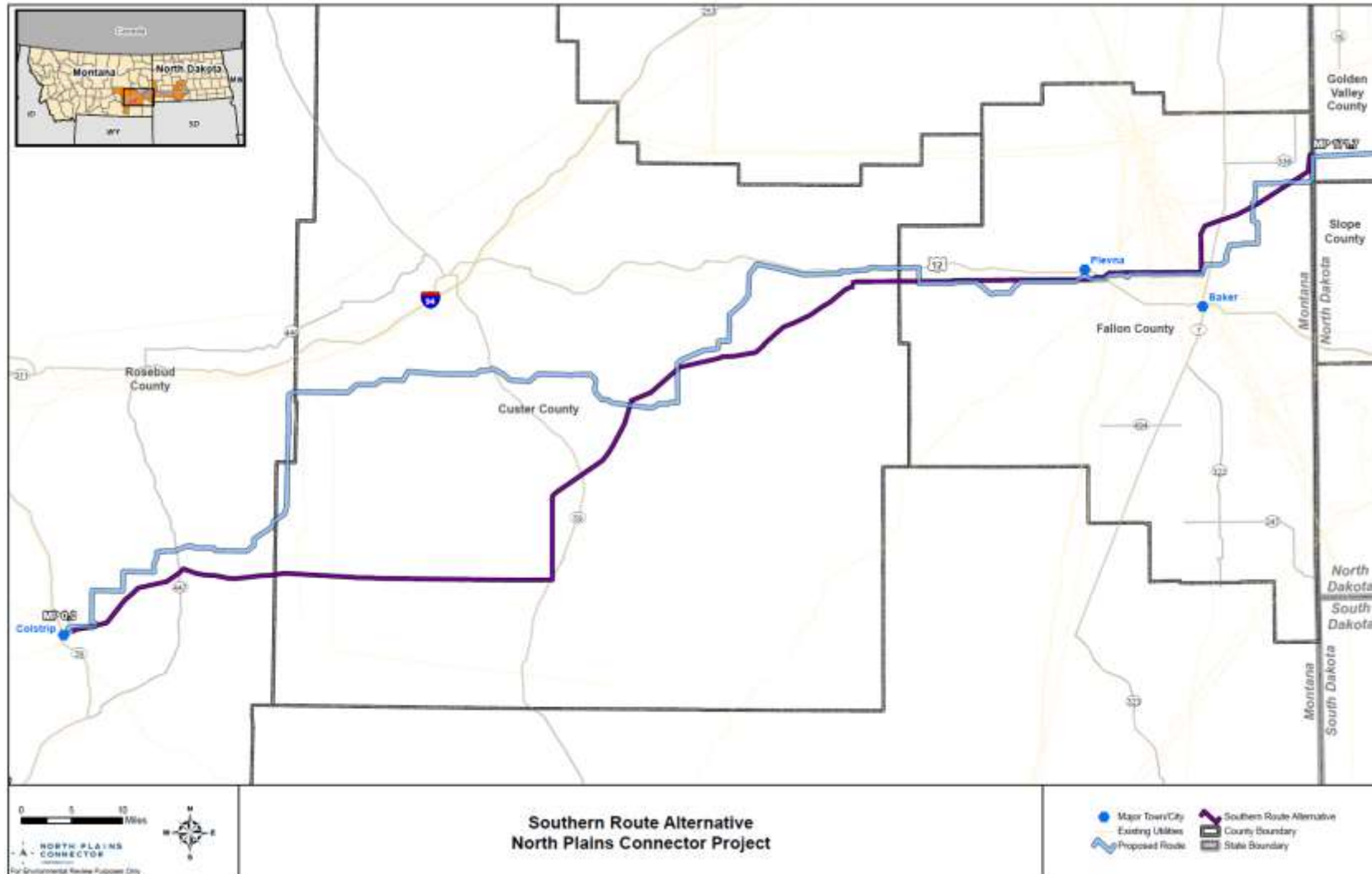
ALTERNATE OPTION

CENTRAL ROUTE



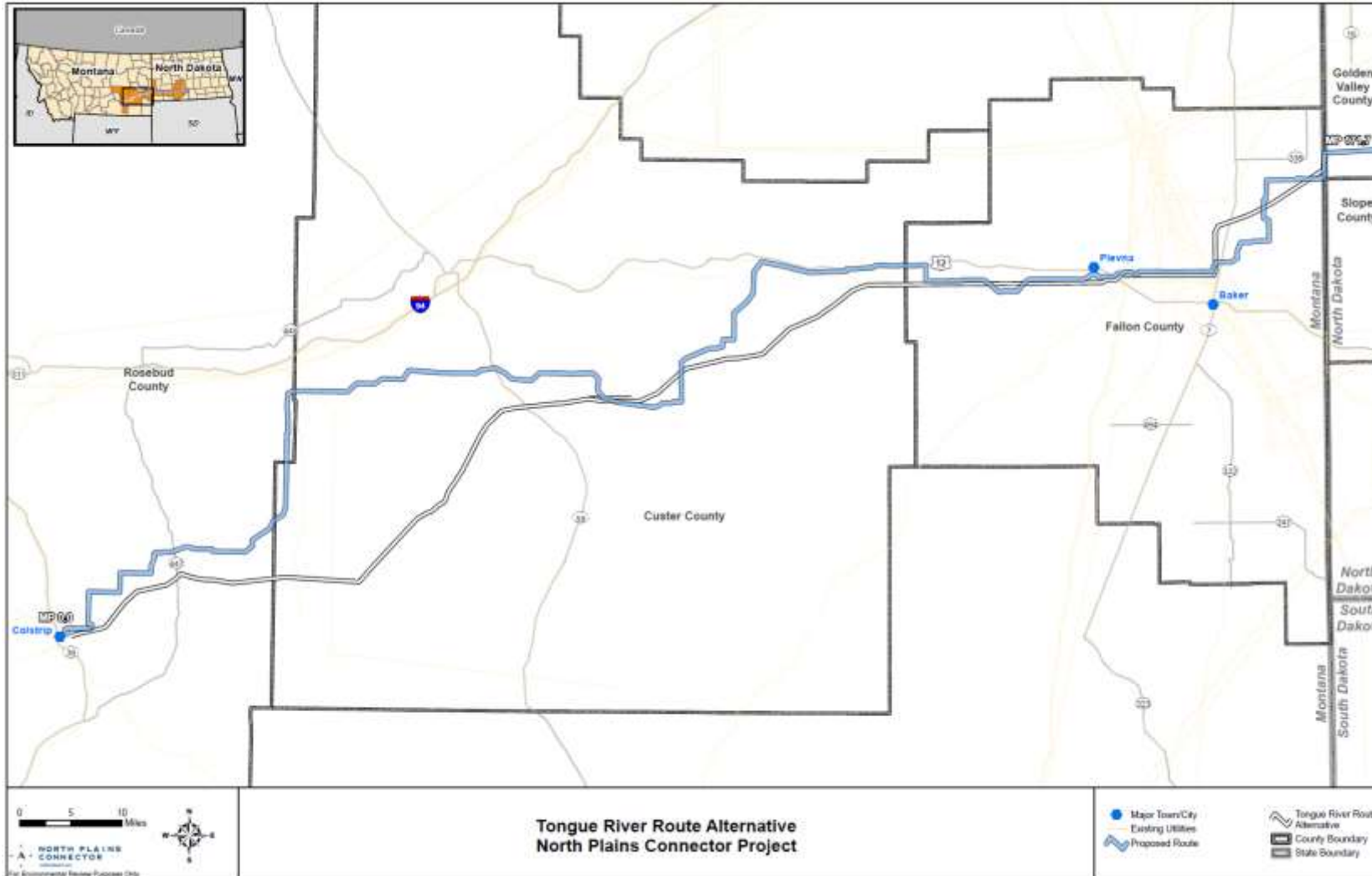
ALTERNATE OPTION

SOUTHERN ROUTE



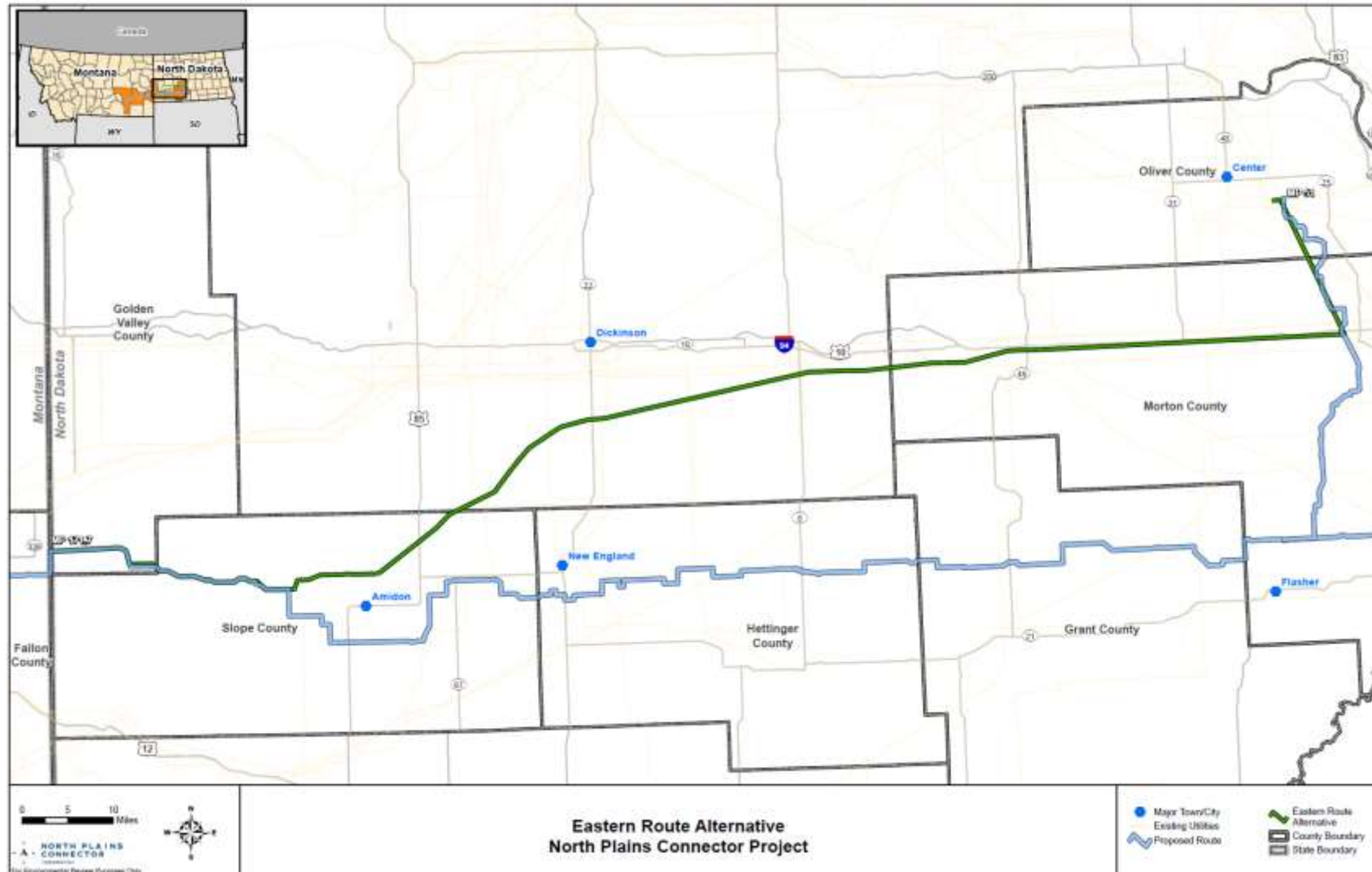
ALTERNATE OPTION

TONGUE RIVER ROUTE



ALTERNATE OPTION

EASTERN ROUTE



North Plains Connector Project

HOW TO COMMENT

ALL COMMENTS MUST BE SUBMITTED IN WRITING VIA EMAIL OR MAIL.

We will not accept any oral comments.

OFFICIAL COMMENTS

Email: northplainsconnector@hq.doe.gov

Mail: Rebecca “RJ” Boyle, NPC NEPA Document Manager
U.S. Department of Energy, Grid Deployment Office
1000 Independence Avenue SW
Washington, DC 20585

THANK YOU!

DOE's Notice of Intent (NOI)

www.energy.gov/sites/default/files/2024-10/noi-eis-0568-north-plains-connector-2024-10-25.pdf

DOE's Environmental Review Process and How to Comment:

www.energy.gov/nepa/doeeis-0568-north-plains-connector-multiple-locations

Montana DEQ's Environmental Review Process:

<https://deq.mt.gov/energy/assistance#accordion2-collapse3>

North Plains Connector Project and Project Proponent, Grid United:

www.northplainsconnector.com

