



Martin County Schools

ENERGY CLASS PHASE I

# Martin County School District

INEZ, KY



Martin County Schools

# Martin County Demographics

**Located in the Appalachian Foothills of Kentucky, Martin County is a very rural area with a median income of \$40,826. Unfortunately, 40.5% of the population in Martin County lives in poverty. The school district has approximately 1,800 students and consists of 5 schools - one high school with an area technical school, one middle school, and three elementary schools. In addition to the schools, other facilities are a football stadium, baseball/softball fields, and a bus garage.**





Martin County Schools

# Eden Elementary



- **Constructed in 2002.**
- **Condition: Good**
- **HVAC regularly maintained, during Phase 2 HVAC systems were repaired and are working properly for the first time in eight years.**
- **Proactive replacement for older units to improve energy efficiency.**
- **LED lighting & new thermostats installed in 2022.**
- **Approximately 400 students, Grades Pre-K- 6**



Martin County Schools

# Martin County Middle School



- **Constructed in 2000**
- **Condition: Good**
- **HVAC regularly maintained. Majority of units are original to the building. All units are currently running and HVAC systems are working properly for the first time in 12 years.**
- **Proactive replacement for older units to improve energy efficiency.**
- **LED lighting & HVAC controls upgrade in 2022.**



Martin County Schools

# Improvements

## Makeup Air Units

Martin County Middle School

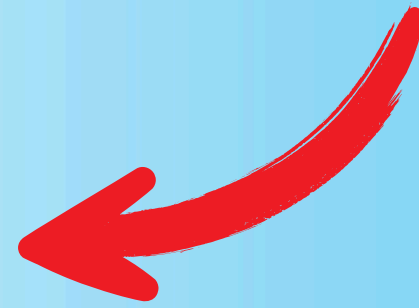
These units were offline were for four years. Once repaired it made the HVAC run more efficiently. It has also helped to improve the air quality of the building.



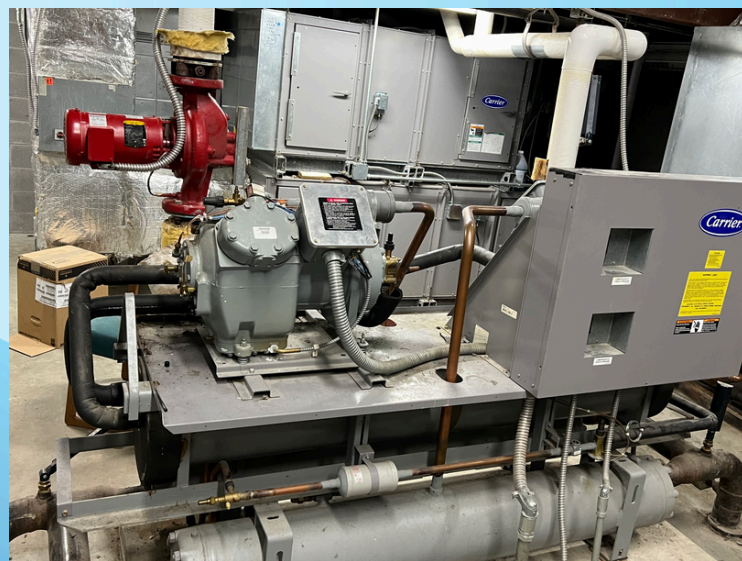


Martin County Schools

# Improvements



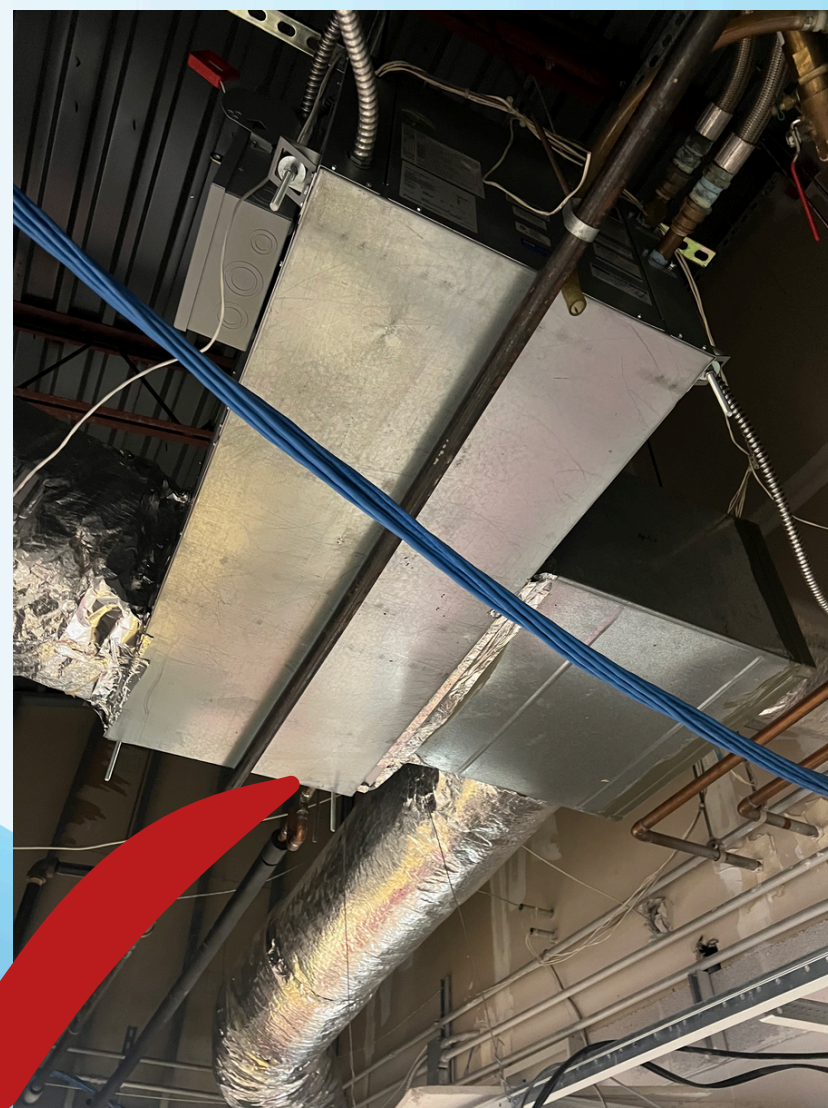
**Chiller Repairs**  
**Chillers were repaired at the schools, that had been offline for several years. Once repaired energy efficiency was improved, air quality improved and overall the comfort level (temperature) of the facility improved.**





Martin County Schools

# Improvements



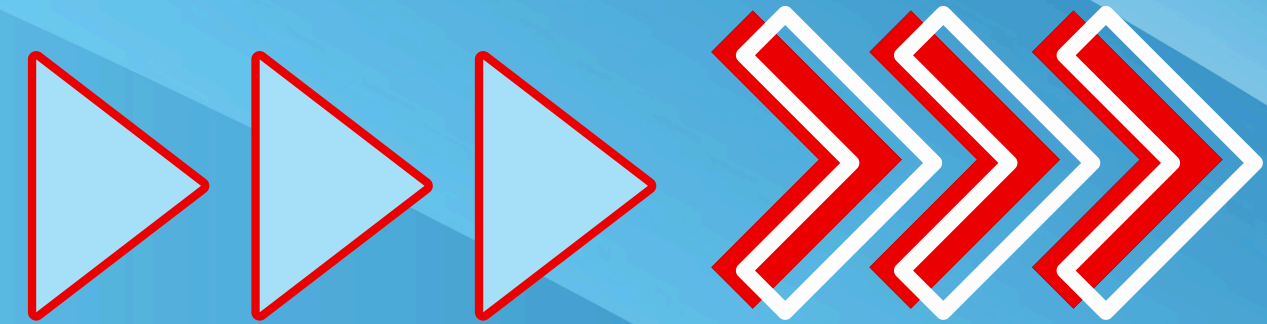
## HVAC UNITS

As we brought the full HVAC system online at Eden Elementary and Martin County Middle School we found several units missing parts and had not been working for many years. It has been our mission this year to repair the units and get the entire system online and working. This has allowed the system to run much more efficiently and improved the air quality in the buildings. CO2 levels have dropped in both buildings as we have improved all parts of the HVAC system.





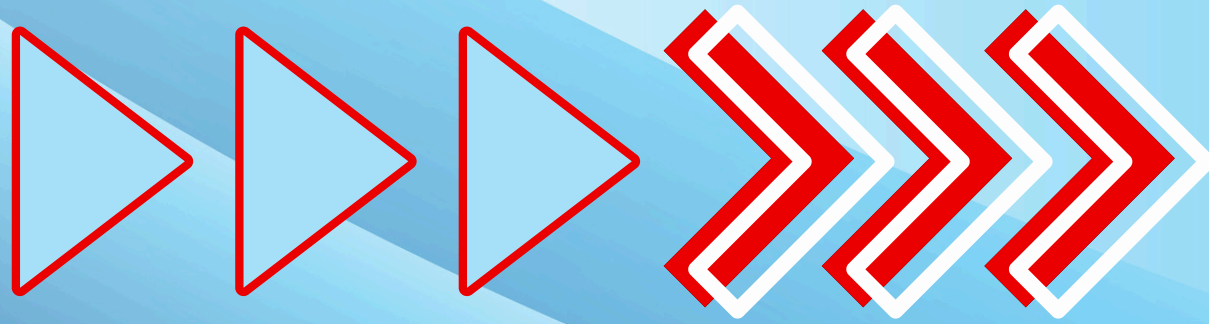
# Moving Forward



**Energy Star Grant will help to fund**



- **Solar Panel Array at Martin County High School**
- **Replacing Older HVAC Units at Eden Elementary and Martin County Middle School**
- **Proactively Repairing the Makeup Air Unit at Eden Elementary**





# Solar Panel Array

## Martin County High School



- Will Provide 22% of the Facility's Energy
- Completed by 12/31/2024
- Funded through multiple grants and district funds; SAVION \$100,000; Mountain Association \$50,000; District Funds \$90,000; Energy Star Grant \$10,000





Martin County Schools

# HVAC SYSTEMS

## **Martin County Middle School Eden Elementary**

- Replacing Older Units to be more Energy Efficient
- Replacing Makeup Air Units to circulate air and improve air quality in the building.





Martin County Schools

# Summary of Impacts

- **Energy Efficiency, smaller carbon footprint**
- **Better Air Quality, Lower CO2 levels in Buildings**
- **22% of Energy for MCHS will come from Solar Panel Array**



Martin County Schools

# Stakeholder Outreach

**The facilities manager and maintenance supervisor regularly report to the district superintendent and local school board. They share the facility plans and needed upgrades with the members. The facilities manager and maintenance supervisor have addressed the resulting upgrades with the board members and their cost-effectiveness. The members have highly praised the reduction in the facility utility costs. The facility manager has instructed them on improving air quality at the targeted schools and how that will improve student health. The impact on the Energy Star rating of each of our facilities has been discussed with the board. Our board understands the importance of making our buildings more efficient and healthier places to work and learn.**





Martin County Schools

# Contact Us:

**Larry James**  
**Superintendent**

**[larry.james@martin.kyschools.us](mailto:larry.james@martin.kyschools.us)**

**Earnest Hale**

**Facilities Manager, CFO**

**[earnest.hale@martin.kyschools.us](mailto:earnest.hale@martin.kyschools.us)**

**Jason Jewell**

**Maintenance Supervisor**

**[jason.jewell@martin.kyschools.us](mailto:jason.jewell@martin.kyschools.us)**

**Michelle Harless, EdD**

**Grant Writer, Director of Early Education**

**[michelle.harless@martin.kyschools.us](mailto:michelle.harless@martin.kyschools.us)**