



OCED
Office of Clean Energy Demonstrations

REGIONAL CLEAN HYDROGEN HUBS PROGRAM

CALIFORNIA HYDROGEN HUB (ARCHES)



COMMUNITY BENEFITS COMMITMENTS SUMMARY

COMMUNITY BENEFITS COMMITMENTS

Phase 1 Summary

This Community Benefits Commitments fact sheet describes how the Regional Clean Hydrogen Hubs (H2Hubs) Program's California Hydrogen Hub award recipient, Alliance for Renewable Clean Hydrogen Energy Systems (ARCHES), plans to engage community and labor stakeholders during the initial planning and development phase of the project (Phase 1). These commitments will be updated at the end of each phase to reflect key learnings and developments as the project continues to grow in specificity and as community feedback is collected and incorporated.

Community Advisory Mechanisms

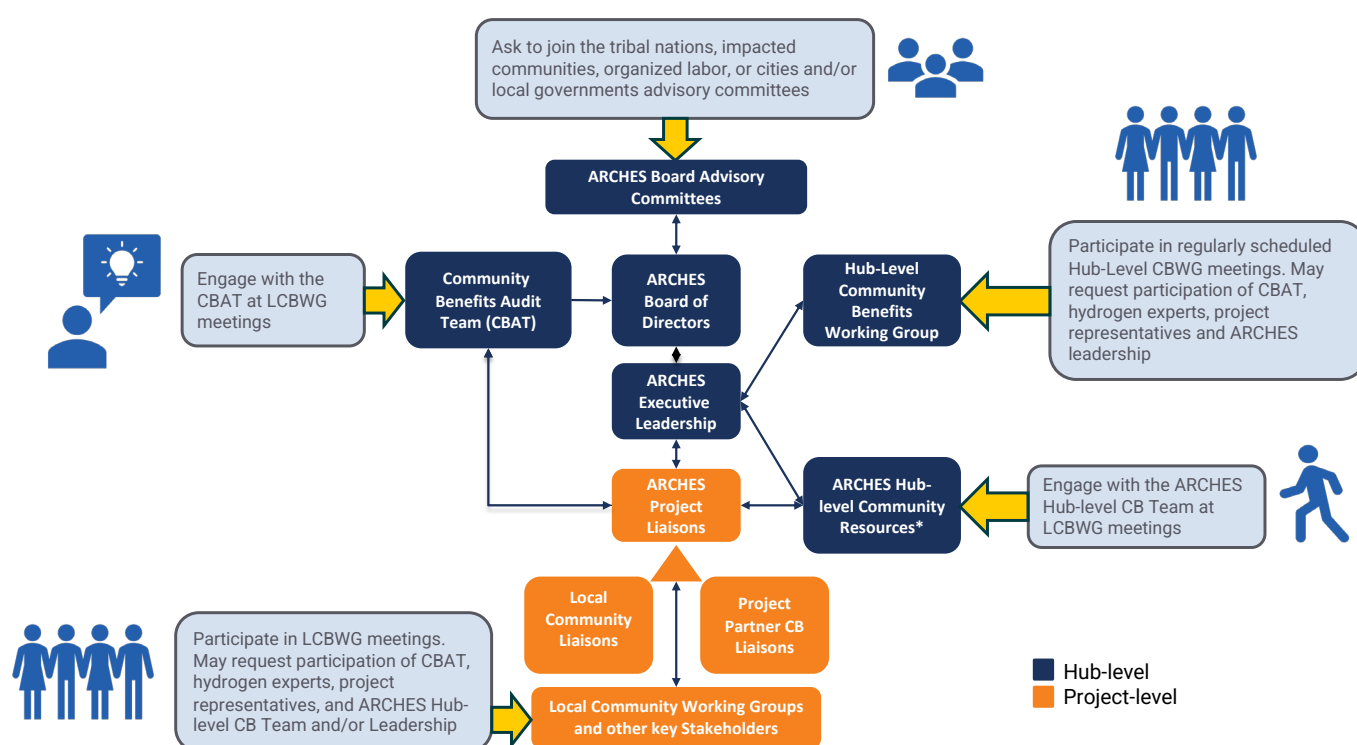
The ARCHES Community Benefits Working Group focuses on Hub-level issues to develop a common understanding of the hydrogen market, connecting community stakeholders to experts for a continual dialogue aimed at learning from each other and collaborating to move the market forward constructively. This Working Group is designed to facilitate multi-directional learning between the H2Hub and communities to help ensure the Hub delivers clear shared benefits. Hub-level responsibilities include establishing monthly project reporting standards, templates, tools, and reports, and enforcing project stage-gate processes to assure performance and readiness for each project before it proceeds to the next phase of work.

This group will continue to meet regularly and will be open to all interested community groups and individuals; it will provide direct feedback to the ARCHES Community Benefits officer and ARCHES leadership on issues around community benefits. Information about meetings and materials can be found on the ARCHES website, which will be updated to reflect Phase 1 commitments and project information, together with clarity on working group structures and transparency. ARCHES will be using this Working Group, as well as the Local Community Working Groups referenced below, to share information with communities and conduct two-way engagement. Community members can also engage directly with local community liaisons to provide input. All these processes will inform community benefits commitments and strategies.



Project-level engagement focuses on specific projects to ensure they are built with the community top of mind and deliver benefits to the localities they are built in. ARCHES project liaisons, project partner liaisons, and local community liaisons are embedded within each organization to enable transparent and fluid information flow and two-way engagement. Local community liaisons will be community-elected. Community members can engage directly with the liaisons as well as through the Local Community Working Groups, which are open to the public and do not require non-disclosure agreements (NDA). These Working Groups will be set up within six months of preferred site selection, and will provide access to information including project locations when public, environmental impacts (e.g., potential impacts on air quality/criteria pollutants), and planned mitigation measures (e.g., emissions control technologies). The Community Benefits Auditing Team will provide third-party monitoring of community benefits and report to the Executive Team and Board on their findings. Project partners' responsibilities include performance reporting, managing project risks, and responding to scorecard issues and deficiencies with improvement and rectification plans.

ARCHES COMMUNITY ADVISORY MECHANISMS ORGANIZATIONAL CHART



COMMUNITY & LABOR ENGAGEMENT ACTIVITIES

During Phase 1, ARCHES will engage with a preliminary list of stakeholders identified through the Community Benefits Pathway. This list will be designed to incorporate full representation, input, and participation from the diverse range of individuals and groups, including:

1. Labor Stakeholders:

- Labor unions representing workers in the energy sector, including those in hydrogen production, transportation, and related industries
- Workforce-development organizations
- Apprenticeship programs and training providers

2. Tribal Entities:

- Federally recognized tribal governments and their representatives
- Tribal environmental and cultural experts
- Tribal organizations and advocacy groups

3. Community Stakeholders and Partners:

- Local community members residing in or near the project areas
- Energy or environmental justice groups representing communities disproportionately affected by pollution, energy, or logistics-related activities
- Advocacy organizations focused on community well-being, health, and quality of life
- Local elected officials and municipal representatives
- Specific community organizations that have volunteered to be community benefits partners of ARCHES

ARCHES will grow this list throughout the development and execution of local projects to deepen and broaden the benefits of hydrogen projects in ways communities recognize.



WORKFORCE & COMMUNITY AGREEMENTS

ARCHES is working to ensure there are clear plans in place to pursue negotiated agreements with communities, labor, and tribes to ensure the success of the project and the achievement of Justice40 goals. These negotiated agreements are essential for addressing the needs and priorities of the various stakeholders involved in the project. Each project will actively conduct work toward these agreements during Phase 1.

The Hub's Community Benefits Pathway strategy outlines its commitment to various quantitative targets related to apprenticeships, training, job quality, and wages. All California Hydrogen Hub projects will have Project Labor Agreements (PLAs), which will set consistent Hub-wide targets with unified language, differentiated only by project partner name and localization of specific details, such as local union chapters and county-specific prevailing wages. During Phase 1, the Hub will work with projects to estimate workforce needs and define training activities to support those needs.

QUALITY JOBS & WORKFORCE DEVELOPMENT IN DISADVANTAGED COMMUNITIES

ARCHES aims to ensure that training programs, career development support, and high-road career opportunities are available for those in California's disadvantaged communities.

ARCHES' overall workforce goal is to develop a skilled hydrogen workforce for California and serve as a hydrogen workforce-development model for the nation.

**THIS HUB ANTICIPATES
CREATING 200,000 JOBS
IN CONSTRUCTION
AND PERMANENT
OPERATIONS OVER
THE COURSE OF THE
PROJECT LIFETIME.**

TRIBAL ENGAGEMENT

ARCHES' tribal engagement plan includes provisions for pursuing agreements that respect tribal sovereignty and address the impacts of hydrogen projects on tribal lands. Key anticipated milestones for tribal agreements include:

- Meetings and consultations with tribal leaders and representatives
- Discussions on project-related impacts and benefits
- Development of agreements that address tribal concerns and objectives

EQUITABLE IMPACTS

The California Hydrogen Hub plans to launch the use of hydrogen for power generation, advancing energy security and more resilient systems through a partnership with the Rincon Band of Luiseño Indians. This partnership will use hydrogen to provide backup power to community well water pumps to ensure clean drinking water during power outages.

The Hub will also partner with local and minority-owned businesses, minority-serving institutions, and organizations targeting workers facing employment barriers to ensure economic benefits and quality jobs are available to underrepresented groups.

ARCHES' Phase 1 plan for identifying, assessing, and mitigating project benefits and burdens for workers and communities involves developing a systematic approach based on its Justice40 assessment, with flexibility to include broader consideration of local priorities such as water pollution, human health, energy prices, and similar aspects. At least 40 percent of the benefits from ARCHES' projects flow to California's disadvantaged communities. During Phase 1, ARCHES will update its Justice40 Assessment and initial Implementation Strategy, which sets the stage for more detailed local assessments, maximization of positive impacts, and minimization of negative impacts in later phases.

ARCHES commits to robust evaluation and elimination, or mitigation of all potential community impacts from hydrogen production, transport, storage, and utilization. Project benefits will include deep decarbonization and localized pollution reductions. These activities will be conducted in close coordination with impacted communities to ensure that currently overburdened communities are not further burdened and will directly benefit from Hub-related projects.

COMMUNITY PARTNERSHIPS

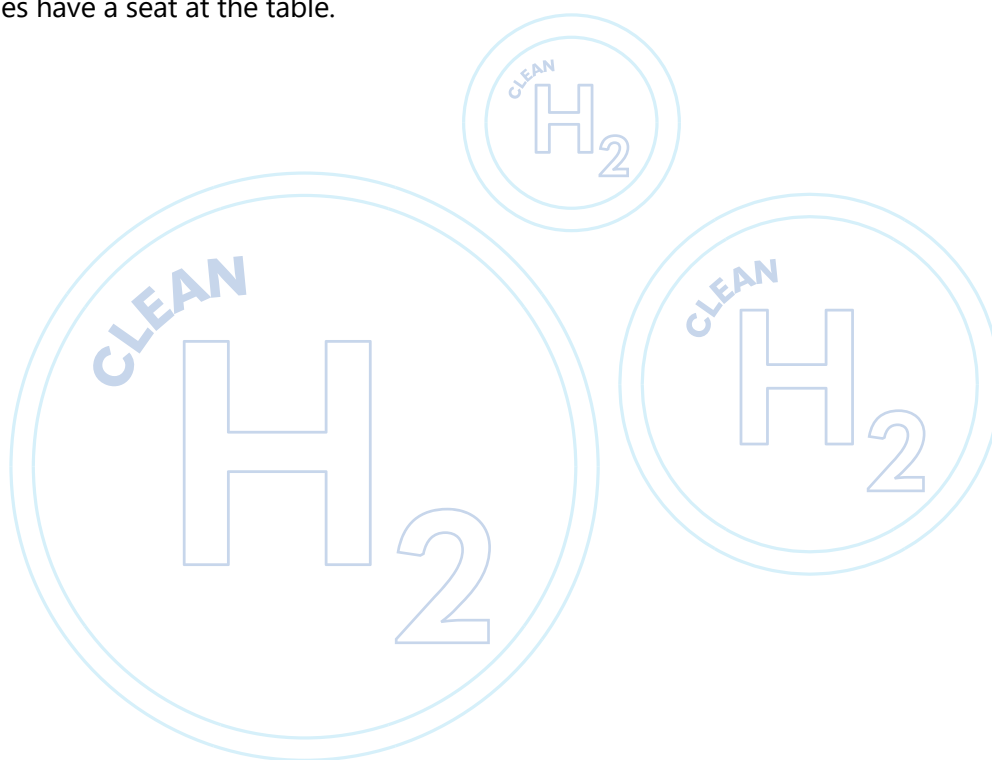
Local engagement is an essential element for project partner selection. ARCHES has set the framework and requirements that necessitate the involvement and commitment from local stakeholders and community partnerships.

Beginning in March 2022, ARCHES held regular ongoing meetings with community groups, environmental non-governmental organizations (NGOs), civic societies throughout the state, and the public at large. Biweekly meetings of the Community Benefits and Engagement Working Groups are open to the public and include representatives from many community groups and NGOs.

Throughout Phase 1, the California H2Hub and Local Community Benefits and Engagement Working Groups will discuss:

- Information about proposed projects
- The effect that projects will have on specific communities and the surrounding region
- Potential job opportunities with both ARCHES and project partners
- Ways to keep the constant direct line of communication active between the community, ARCHES, and project liaisons
- Plans for how the Hub engages with communities to support an honest, accessible, and two-way engagement strategy and practice

Specific community organizations that have thus far volunteered to be community benefits partners of ARCHES are shown in the following table. ARCHES will work to create new partnerships, particularly with Community-Based Organizations and NGOs supporting impacted communities, by addressing barriers to their participating as partners. ARCHES will grow this list, ensuring that local and impacted communities have a seat at the table.



Community Benefits Partner Organizations

Atlas Project Support LLC	Global Empathy Training Academy	Rincon Band of Luiseño Indians
Big John Kares	Green Hydrogen Coalition	San Bernadino Valley College
Breathe Southern California	Imperial Country Workforce & Economic Development	San Luis Rey Indian Water Authority
Clean Air Task Force (CATF)	Inland Empire Waterkeeper (IEWK)	South Bay Workforce Investment Board, Inc.
Climate Resolve	Inland Empire/Desert Regional Consortium (IERDC)	SSA Marine – Port of Oakland
Community Build Inc.	KIGT	Sustain SoCal
Environmental Justice League	Learn Fresh	Think Watts Foundation
Faith2Green	Move LA	Valley Clean Air Now
Fierce Courage	New Day Hydrogen, LLC	Village Solutions Foundation
Genesis Business Solutions, LLC	NOVAworks	Western Riverside Council of Governments
Helmets to Hardhats	Richmond Workforce Development Board	

Major Labor Partners for Community Benefits and Workforce Development

AFL-CIO	NABTU	State Building and Construction Trades Council of California
---------	-------	--

State and Local Labor Partners for Community Benefits and Workforce Development

Anti-Recidivism Coalition	Ironworkers Local 433	UA Local 250
Boilermakers Local 92	IUOE Local 12	UA Plumbers Local 78
California Labor Federation	IUPAT District Council 36	United Union of Roofers Local 220
Coalition for Responsible Community Development	LA/OC Counties Building and Construction Trades Council	USW Local 675
CWA	Los Angeles County Federation of Labor	Utility Workers Union of America Local 483 Transmission and Storage
Flintridge Center	Orange RPU	Women in Non-Traditional Employment Roles
IBEW Local 11	Sheet Metal Air Rail Transportation Workers Local 105	Workforce Development Board Contra Costa County
IBEW Orange County Local 441	Southern California Pine Trades District Council 16	

DATA REPORTING & PLATFORM(S) & APPROACH

The creation of a centralized public data-sharing platform is a key component of the ARCHES community benefits commitments to ensure transparency and accessibility. The platform aims to provide comprehensive information about project data and activities, including metrics related to community and labor engagement, quality jobs and workforce development, tribal impacts, DEIA, and Justice40 initiatives in later phases.

In Phase 1, this platform will include basic project information, information about the Community Benefits Auditing information about the Community Benefits Auditing Team, engagement mechanisms and events, and project status updates. It will play a crucial role in fulfilling stated commitments and ensuring that project benefits flow to California's disadvantaged communities.

