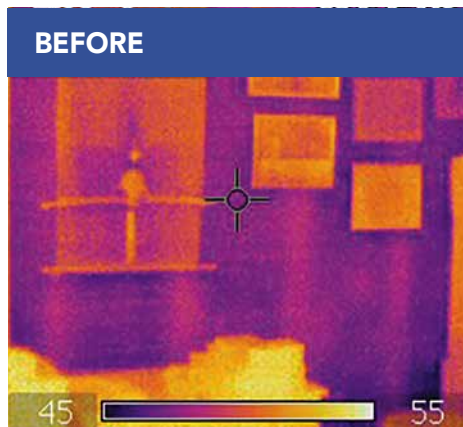




Dense-Pack a Sidewall via Interior Blow

Job Aid for Install Dense-Pack Sidewall Insulation Badge

Aligns With Standard Work Specifications 4.0202.1



Older houses often lack exterior wall insulation. (The darker wall cavities of this thermal image are uninsulated.)



Protect the floor below the work area and use containment enclosures to prevent the spread of dust and debris.



Ensure balloon-framed walls are blocked at top and bottom to prevent insulation from unintentionally blowing into the attic or basement.



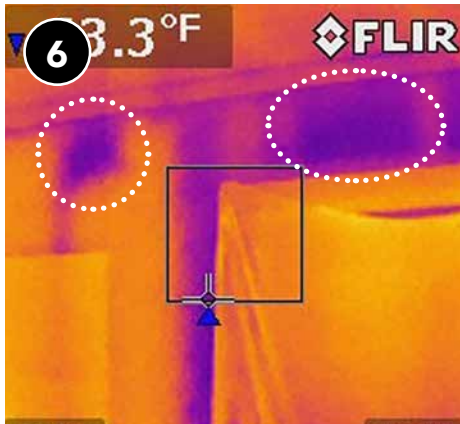
Confirm the wall integrity can withstand the air pressure of blown insulation and make sure all holes are repaired to prevent insulation blowouts.



Drill insulation access holes as needed to ensure complete coverage of all uninsulated wall cavities.



Fill cavities completely and to the proper density.



Ensure all cavities are filled before completing the job (note that dark areas were missed).



Patch insulation access holes or use a chair rail molding to cover the holes.



When properly insulated, the thermal performance of the wall improves and air leakage is reduced.



Checklist

Install dense-pack sidewall insulation¹

DESIRED OUTCOME

Minimize dust and achieve consistent, uniform thermal boundary between conditioned and unconditioned space to prescribed R-value without voids in a manner that will prevent future settling and minimize framing cavity air flows.²

General

- ☐ Drill patterns reflect knowledge of framing.
- ☐ Probe cavities to ensure all were accessed.
- ☐ Fill all cavities to proper density. (Verify before holes are plugged or with blower door and infrared scan if temperature permits.)
- ☐ Patch drill holes as required by standards.
- ☐ Fill out applicable sections of house-wide insulation certificate with coverage area, thickness, and R-value.
- ☐ Clean the jobsite.

Exterior

- ☐ Install or use proper jobsite protection measures (e.g., covering shrubs).
- ☐ Remove siding as needed to prevent damage.
- ☐ Reinstall siding in a workmanlike manner.

Interior

- ☐ Install or use proper dust control measures (e.g., drill shrouds, vertical containment).

1. To earn badge, at least one of total number of jobs must be blown from exterior and one from interior.

2. Relevant Standards: 4.0202.1

