



Dense-Pack a Sidewall via Exterior Blow

Job Aid for Install Dense-Pack Sidewall Insulation Badge

Aligns With Standard Work Specifications 4.0202.1

BEFORE



Walls that are missing insulation or underinsulated present opportunities for energy savings. (The darker shaded wall cavities of this thermal image are uninsulated.)



Protect work area from debris and dirt before removing siding.



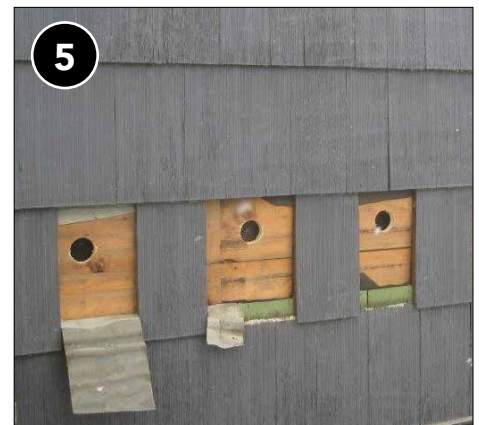
Ensure balloon-framed walls are blocked at top and bottom to prevent insulation from unintentionally blowing into the attic or basement.



Confirm the wall integrity can withstand the air pressure of blown insulation and make sure all holes are repaired to prevent insulation blowouts.



Remove siding as needed based on the type of exterior cladding material. Many siding types (e.g., vinyl, aluminum, steel) can be loosened with a siding tool.



Drill insulation access holes as needed to ensure complete coverage of all uninsulated wall cavities.



Using an injection fill tube, insulate all cavities to the proper density.



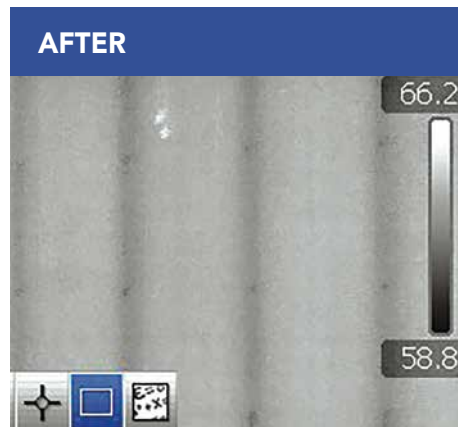
Ensure all cavities are filled before completing the job.



Plug and seal insulation access holes. When present, repair the drainage plane to prevent water intrusion.



Carefully reinstall any removed siding.



When properly insulated, the thermal performance of the wall improves and air leakage is reduced. (The lighter shaded wall cavities in this thermal image are insulated.)



Checklist

Install dense-pack sidewall insulation¹

DESIRED OUTCOME

Minimize dust and achieve a consistent, uniform thermal boundary between conditioned and unconditioned space to prescribed R-value without voids in a manner that will prevent future settling and minimize framing cavity airflows.²

General

- ☐ Drill patterns reflect knowledge of framing.
- ☐ Probe cavities to ensure all were accessed.
- ☐ Fill all cavities to proper density. (Verify before holes are plugged or with blower door and infrared scan if temperature permits.)
- ☐ Patch drill holes as required by standards.
- ☐ Fill out applicable sections of house-wide insulation certificate with coverage area, thickness, and R-value.
- ☐ Clean the jobsite.

Exterior

- ☐ Install or use proper jobsite protection measures (e.g., covering shrubs).
- ☐ Remove siding as needed to prevent damage.
- ☐ Reinstall siding in a workmanlike manner.

Interior

- ☐ Install or use proper dust control measures (e.g., drill shrouds, vertical containment).

1. To earn badge, at least one of total number of jobs must be blown from exterior and one from interior.

2. Relevant Standards: 4.0202.1

