



Insulate a Subfloor With Batts Above Unconditioned Space

Job Aid for Insulate the Floor Above an Unconditioned Subspace (Site-Built Single Family) Badge

Aligns With Standard Work Specifications 4.0301.1, 4.0301.6, 4.0302.1

BEFORE



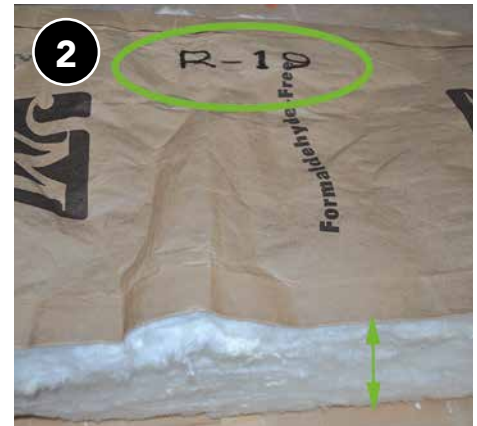
Uninsulated floor cavities are an opportunity to increase the thermal performance of floors above unconditioned spaces.

1



Ensure air sealing is complete prior to adding insulation.

2



Ensure the insulation R-value matches the work order.

3



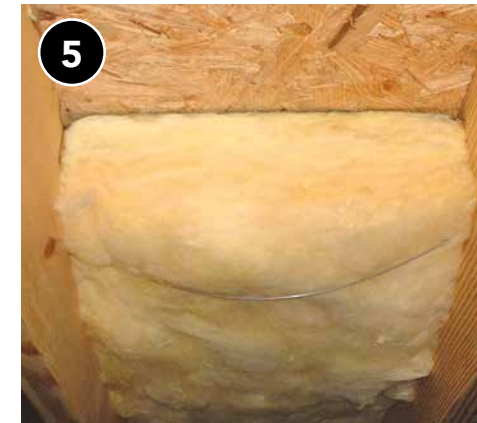
Install batts with vapor retarders so that the vapor retarder faces the conditioned space.

4

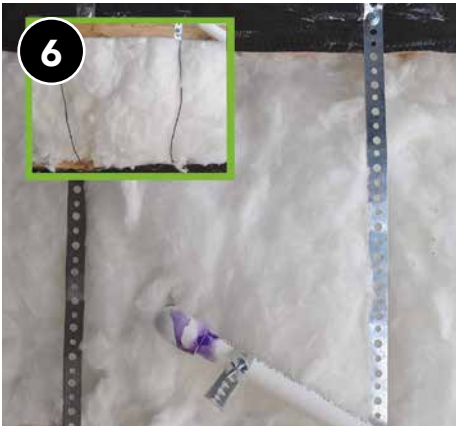


Install batts with no gaps.

5



Ensure batts are in contact with subfloor.



In areas exposed to the outside or to pests, install a rigid barrier over the insulation as an extra layer of protection.



Insulation with complete coverage in contact with the subfloor will improve the thermal performance of the floor assembly.



Checklist

Insulate the floor above an unconditioned subspace (site-built single family)

DESIRED OUTCOME

Consistent thermal boundary between conditioned and unconditioned space to the prescribed R-value.¹

General:

- ☐ Ensure that worker verified air sealing of the floor system was completed before installing insulation.
- ☐ Install insulation to the prescribed R-value.
- ☐ Install insulation correctly for climate (e.g., vapor retarder layer toward the “warm” side).
- ☐ Ensure insulation is secure such that it will remain in contact with the subfloor.
- ☐ Ensure insulation has no gaps, voids or compressions, misalignments, or potential for wind intrusion.
- ☐ Fill out applicable sections of house-wide insulation certificate out with² insulation type, coverage area, installed thickness, settled thickness, R-value, and number of bags installed.

Batts:

- ☐ Secure batts with physical fasteners.
- ☐ Providing 100% coverage of the floor assembly.

Blown-in:

- ☐ When installing netting or rigid backing to accommodate blown-in insulation, ensure that backing is:
 - ☐ Mechanically fastened to underside of floor assembly according to manufacturer specifications or better.
 - ☐ Providing 100% coverage of the floor assembly.
- ☐ Install insulation to the correct density.

1. Relevant Standards: 14.0301.1, 4.0301.6, 40302.1

2. Underlined details are required on all insulation certificates.
Other items are required only when using blown-in insulation.

