



THE OFFICE OF CLEAN ENERGY DEMONSTRATIONS

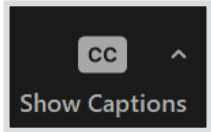


Clean Energy Demonstration Program on Current and Former Mine Land Mineral Basin: Coal-to-Solar in Pennsylvania Community Briefing

Office of Clean Energy Demonstrations
U.S. Department of Energy
April 2, 2024

Webinar Logistics

How do I turn on live captions?

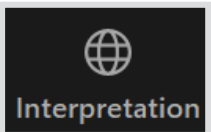


Click on the “**Show Captions**” button in the control panel at the bottom of your screen.

Is this webinar being recorded?

No, this briefing is not being recorded in order to encourage open dialogue and participation from all attendees.

How do I turn on Spanish or ASL interpretation?



Click on the “**Interpretation**” button in the control panel at the bottom of your screen.

Will the slides be shared?

Yes, a copy of the presentation slides will be shared via email with registrants and on the OCED website within the next week.





Welcome



Introductions



Emmanuel Taylor
Facilitator



Tiffany Mayville
CEML Stakeholder
Engagement Specialist,
OCED



Todd Shrader
Director,
Program Management,
OCED



Introductions



Matthew Zappia
Development
Manager
Swift Current Energy



Alec Jarvis
Vice President,
Development
Swift Current Energy



Brad Clark
Director,
Workforce Solutions
Edelen Renewables

Meeting Objectives



Introduce Mineral Basin: Coal-to-Solar in Pennsylvania selected for award negotiations by the Office of Clean Energy Demonstrations (OCED).



Provide transparency on the award process and other resources related to the Clean Energy Demonstrations Program on Current and Former Mine Land.



Create an opportunity for participants to engage with DOE and selectees.



Agenda

- OCED Overview
- Clean Energy Demonstration Program on Current and Former Mine Land Overview
- Mineral Basin: Coal-to-Solar in Pennsylvania
- Next Steps & Resources
- Feedback Session
- Wrap-up & Close





Office of Clean Energy Demonstrations (OCED) Overview

OCED Mission

Deliver clean energy technology **demonstration projects at scale** in partnership with the **private sector** to **accelerate deployment, market adoption**, and the **equitable transition** to a decarbonized energy system.”





Clean Energy Demonstration Program on Current and Former Mine Land (CEML)

CEML Purpose: Current and Former Mine Land

Program Purpose

To demonstrate the technical and economic viability of deploying clean energy on **current** (operating) and **former** (abandoned or inactive) mine land.



Two of the projects selected for negotiation are on currently active mine land.

Together, these two projects aim to decarbonize mining operations and secure a low-carbon domestic clean energy supply

Three of the projects selected for negotiation are on former mine land.

These projects aim to repurpose previously disturbed land, make use of pre-existing energy infrastructure, and revitalize local economies.



CLEAN ENERGY DEMONSTRATION PROGRAM ON CURRENT & FORMER MINE LAND PROJECT SELECTIONS



OCEDE
Office of Clean Energy Demonstrations

CEML has the potential to...



Reduce greenhouse gas emissions by deploying large-scale clean energy.



Preserve agricultural and natural land by deploying clean energy on mine land instead.



Improve grid stability by coupling intermittent renewables with storage solutions.



Repurpose existing energy infrastructure on mine land towards new, productive uses.



Create local, good-paying jobs and workforce development opportunities for energy and mining communities.



Support mining decarbonization to secure the domestic clean energy supply chain.



Mineral Basin: Coal-to-Solar in Pennsylvania

Swift Current Energy **acquires, develops, constructs, owns and operates** highly competitive, utility-scale wind, solar and energy storage projects across the United States

Founded in 2016, Swift Current has **commercialized more than 2 gigawatts** of utility-scale renewable energy projects.



With a robust pipeline of wind, solar and energy storage projects under development, Swift Current is focused on bringing low-cost clean energy and meaningful economic development to communities across the United States.

Clearfield County, Pennsylvania

401.64 MW : 2715 Acres : Goal for Energization in 2027





**MINERAL BASIN
SOLAR**

A Swift Current Energy Project

SWIFT CURRENT

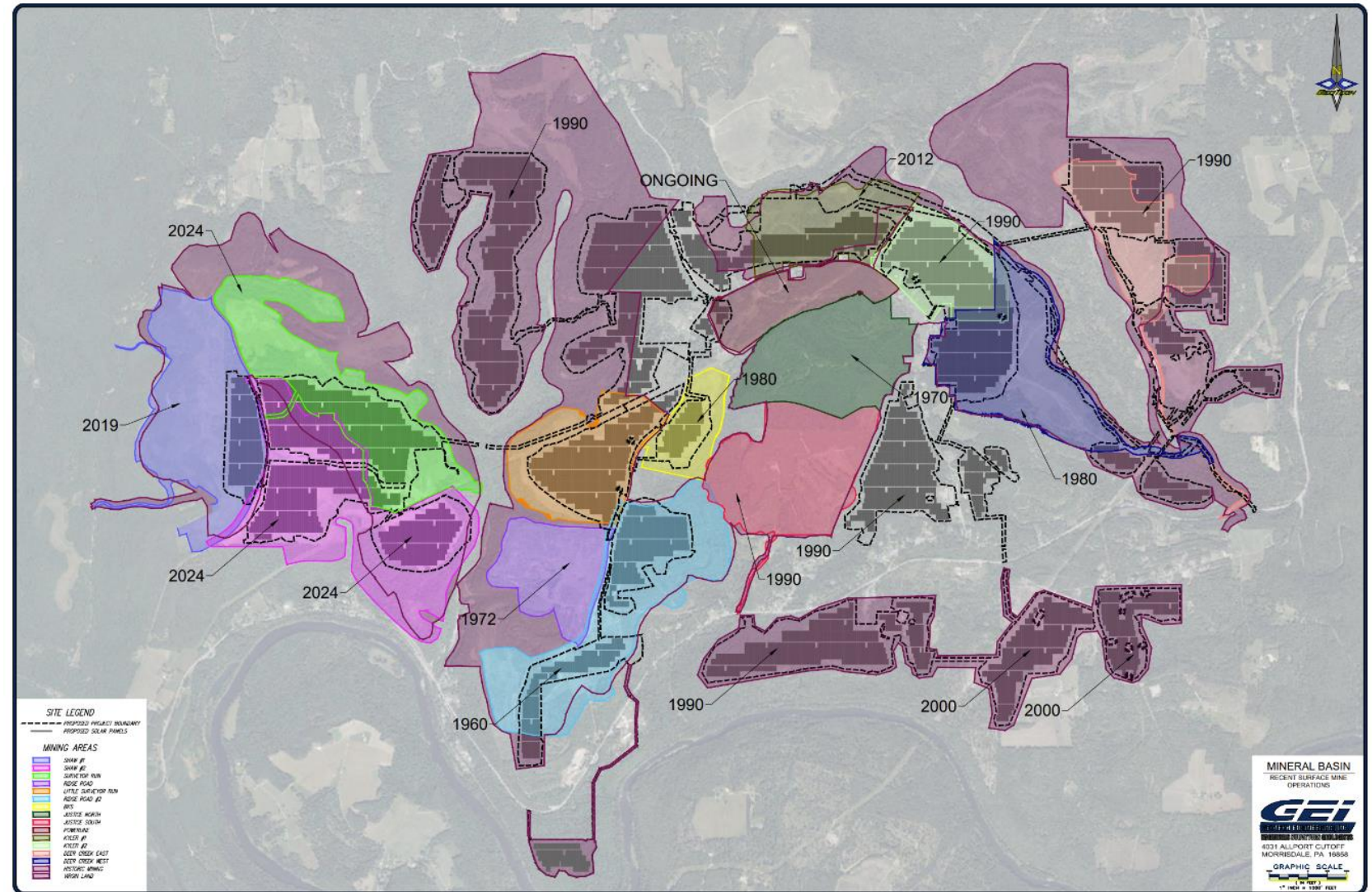
Site and Mines

SITE LEGEND

--- PROPOSED PROJECT BOUNDARY
===== PROPOSED SOLAR PANELS

MINING AREAS

	SHAW #1
	SHAW #2
	SURVEYOR RUN
	RIDGE ROAD
	LITTLE SURVEYOR RUN
	RIDGE ROAD #2
	BKS
	JUSTICE NORTH
	JUSTICE SOUTH
	POWERLINE
	KYLER #1
	KYLER #2
	DEER CREEK EAST
	DEER CREEK WEST
	HISTORIC MINING
	VIRGIN LAND





**MINERAL BASIN
SOLAR**

A Swift Current Energy Project

SWIFT CURRENT

Opportunity/Impact



- Former mine use lands are **prime sites for future solar projects** without impacting agricultural lands
- **Utilize prescribed native plantings** and provide fallowing time for the soil to rest and **rejuvenate** given the **30+ year lifespan** of the project
- Mineral Basin plans to have **less than ¼ Acre of wetland impact** over the entire 2,700-acre project
- Generating **over 700,000 MWh** annually
- **Offsetting over 73,000 tons of CO₂**
- First of several other Swift Current projects in the region will inform future projects across the national pipeline for Swift Current and their partners

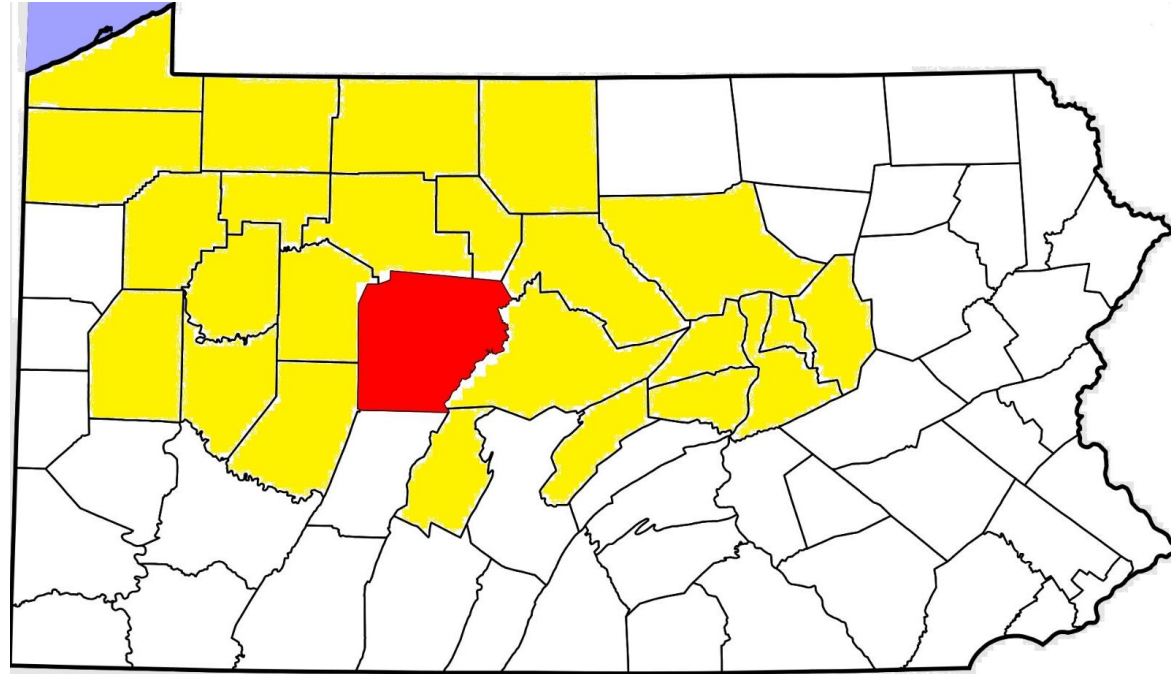


MINERAL BASIN
SOLAR

A Swift Current Energy Project

SWIFT CURRENT

CBP Cornerstones



- Community and Labor Engagement
- Investing in the American Workforce
- Diversity Equity Inclusion and Accessibility
- Justice40 Initiative



Our commitment to improving local and regional social, economic, and environmental outcomes will follow our four-phase community benefit plan design, implementation, and improvement process:

Phase 1	Phase 2	Phase 3	Phase 4
Engage stakeholders	Implement CBP	Track progress	Measure success
Develop strategic plans with partners	Increase access to career advancing training across sectors	Improve programming aligned to success metrics and goals	Demonstrate impact
Establish success metrics and goals with partners			Create sustainability plans



Community Benefits Plans

Prioritizing Community Benefits in OCED Projects

OCED **requires** applicants to include a Community Benefits Plan (CBP) to help ensure broadly shared prosperity in the clean energy transition.

By **prioritizing community benefits**, we can ensure the next chapter in America's energy story is marked by greater justice, equity, security, and resilience.

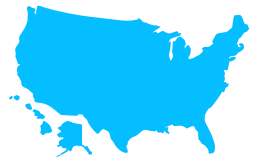
Community & Labor Engagement



Diversity, Equity, Inclusion, & Accessibility



Investing in the American Workforce



Justice40 Initiative





Next Steps & Resources

Next Steps – Negotiations

Project
selected

Project
awarded



Announcement and Negotiations

*Projects have been selected, but awards
have not been made*

DOE OCED will now begin the **negotiations process** with project selectees.

Award Negotiations: OCED and project selectee enter discussions to ensure technical and financial viability of the project, and that the community benefits are robust, tangible, and measurable.

Next Steps – After Award

IF the projects receive an award (successful negotiations):

- Awarded projects will enter into a **cooperative agreement** with OCED
- Begin **Phase 1**: Detailed Project Planning
- OCED will work with the recipients starting in Phase 1 to **ensure compliance with the National Environmental Policy Act (NEPA)**
- Local communities (state, local, and community stakeholders) will have the **opportunity for ongoing engagement** with OCED and the recipient(s)

Ongoing community engagement throughout each phase



Anticipated Project Phases

- Community Benefits Commitments are made public through each phase
- Go/No Go Decision at the end of every phase

Get Involved

How could this project impact me?

Learn more about OCED's
Community Benefits Plan
Framework →

Is there a CEML project near me?

View the selected CEML Map →

Project
selected

★ WE ARE HERE

What is the CEML
Program?

Learn more →

Project
awarded

1

~ 6-18 months



Phase 1: Project Planning

Community Benefit Commitments Public

Ongoing community
engagement throughout
each phase

When are the project-specific
briefings being held?

Learn more and register
here →

2

~1-3 years



Phase 2: Project Development

Community Benefit Commitments Public

3

~2-4 years



Phase 3: Install, Integrate, Construct

Community Benefit Commitments Public

4

~2-4 years



Phase 4: Ramp-Up & Operate

Community Benefit Commitments Public

Anticipated phases

How do I stay informed?

Sign up for updates →

Learn more about project phases →



OCED
Office of Clean Energy Demonstrations



Community Benefit Commitments Public



Go/No-Go Decisions



Feedback Session

Ground Rules for Discussion

Submit questions using the Q&A feature

Reserve judgement

One idea at a time

It is okay to build on the ideas of others-
Clarifying questions are okay





For more information

- For questions regarding this project, email PA_CEML@hq.doe.gov

- OCED Website & Newsletter Sign-up
energy.gov/oced

Scroll to bottom to sign up here:

Sign Up for OCED News & Alerts

Subscribe and stay up-to-date on all upcoming funding opportunities, news announcements, upcoming events, and more.

- OCED Exchange (RFIs, NOIs, and FOAs)
oced-exchange.energy.gov
- Follow us on LinkedIn
linkedin.com/company/doe-oced/

Resources

- **CEML Program**
 - [OCED CEML Program Webpage](#)
 - [CEML Factsheet](#)
- **Justice40 Initiative**
 - <https://www.energy.gov/diversity/justice40-initiative>
- **Energy Justice Dashboard (BETA)**
 - <https://energyjustice.egs.anl.gov/>
- **Climate and Economic Justice Screening Tool**
 - <https://screeningtool.geoplatform.gov/en/#3/33.47/-97.5>
- **NEPA Resources**
 - <https://www.energy.gov/oced/oceds-guide-nepa>



Thank you!



OCED
Office of Clean Energy Demonstrations

For more information, please visit energy.gov/OCED