



SCEP
STATE & COMMUNITY ENERGY PROGRAMS

Training for Residential Energy Contractors Grant Submissions:

Workforce Training Curricula and Steps to Recognition

Through the [State-Based Home Energy Efficiency Contractor Training Grants](#), also known as Training for Residential Energy Contractors (TREC), the Department of Energy (DOE) Office of State and Community Energy Programs will fund state energy offices to provide comprehensive training programs to support a growing and skilled residential contractors. The Office of State and Community Energy Programs has leveraged the efforts of the DOE Building Technologies Office to help state applicants train workers using robust curricula and certification programs.

As part of the TREC project narrative section of their application (ALRD Section 6.4), states must demonstrate that their proposed certifications meet energy workforce demands. Training providers, states, and other interested parties should follow the instructions below to submit programs for DOE recognition.

Building Science Education Solutions Center Overview

Within the [Building Science Education Solutions Center](#) webpage, the DOE curates open-access training materials and recognizes comprehensive training

curricula targeted at efficiently decarbonizing residential buildings. This effort helps instructors increase adoption of comprehensive training to support a stronger workforce in key technical job areas. DOE currently recognizes training for the following job types (with links to the webpage from each job type):

- [Heat Pump Installation](#) (HVAC)
- [Heat Pump Comfort Advising](#) (HVAC)
- [Heat Pump Water Heater Installation](#)
- [Home Energy Audit](#) (Single and Multifamily)
- Envelope Retrofit Program (coming soon)

Instructions to Seek Program Recognition – Recommended for Training Partners and States

1. **Review** the “Key Concept Knowledge Areas” for each job type you seek recognition for.
2. **Download** the “Recognition Form” and “Scoring Tool” files from the recognition page for the job type you are seeking recognition for (linked above). The recognition form includes basic

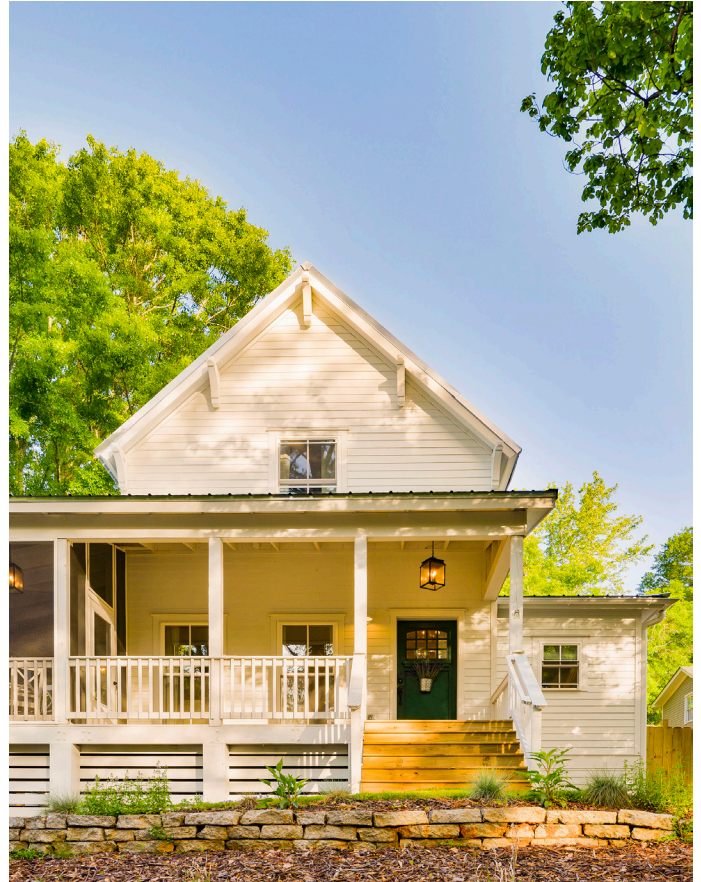




information about the training provider, and the scoring tool file lists expected content to assess if training meets criteria for recognition.

3. **Score** your program using the scoring tool by following the instructions provided in the excel file. You will need to provide documentation of your supporting materials for DOE review.
4. **Prepare** your submission. Gather the materials that support your self-scoring, which could include the syllabus, examination outline, learning objectives, course outlines, certification requirements, or other documents relevant to your program's offerings. Including these materials in the recognition form and the scoring tool helps expedite DOE review. DOE considers all documents confidential and will not distribute or use them beyond this internal review.
5. **Submit** the recognition form, your self-score, and supporting materials to bsesc@pnnl.gov.

DOE will review submitted materials to confirm comprehensiveness. DOE will notify the submitter to confirm they meet criteria for recognition or offer recommendations to address any identified training scope gaps. If any scope gaps exist, DOE will encourage you to update and resubmit your materials.



The recognized programs cover key occupations and knowledge areas relevant to DOE's mission. The DOE encourages organizations that provide training and/or credentials related to these job types to submit them for recognition. Please send any questions to bsesc@pnnl.gov.

