

**APPENDIX G**

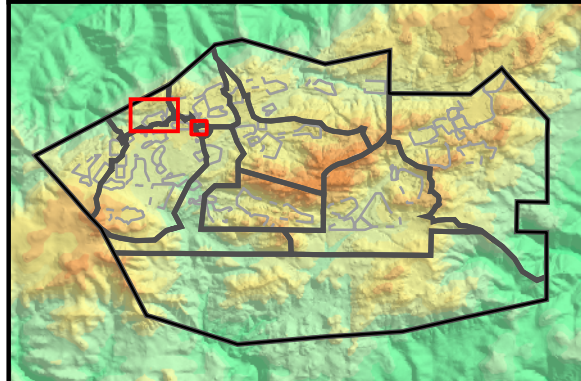
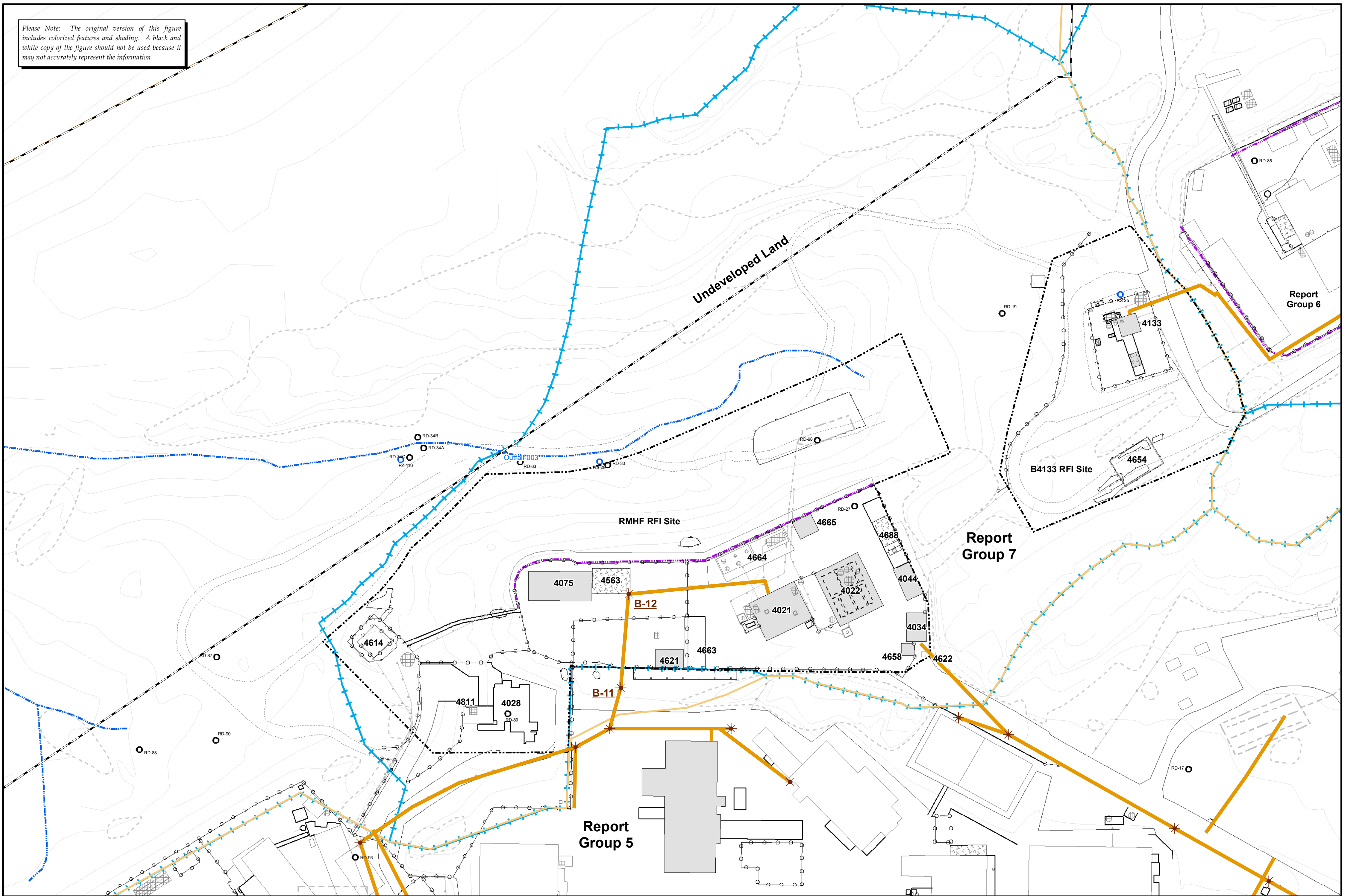
**SEWER INSPECTION DOCUMENTATION LOGS**

## **Sewer Inspection Documentation Logs**

This appendix contains Sewer Inspection Documentation Logs and a map showing the inspected sewer manhole locations. Both of the 2 manholes located within Group 7 were inspected to assess potential damage to the sewer line as required by DTSC.

The logs presented in this appendix describe sewer manhole conditions at the time of the site inspection, and they reflect sample recommendations as of the inspection date.

Please Note: The original version of this figure includes colorized features and shading. A black and white copy of the figure should not be used because it may not accurately represent the information



- |                                                                                                                                                                                                                                                                                                                                                                                    |                                                                                                                                                                                                                                                                           |
|------------------------------------------------------------------------------------------------------------------------------------------------------------------------------------------------------------------------------------------------------------------------------------------------------------------------------------------------------------------------------------|---------------------------------------------------------------------------------------------------------------------------------------------------------------------------------------------------------------------------------------------------------------------------|
| <ul style="list-style-type: none"> <li>Administrative Area Boundary</li> <li>RFI Site Boundary</li> <li>Report Group Boundary</li> <li>Existing Building or Structure</li> <li>Removed Building or Structure</li> <li>Other Tanks</li> <li>Solvent Tank</li> <li>Petroleum Fuel/Oil Tank</li> <li>Hydrazine Tank</li> <li>Sump</li> <li>Vaults and Pits</li> <li>Awning</li> </ul> | <ul style="list-style-type: none"> <li>Ponds</li> <li>Pipe</li> <li>Leach Field</li> <li>Drainage</li> <li>Lined Drainage</li> <li>Surface Water Divide</li> <li>Rock Outcrop</li> <li>Dirt Road</li> <li>A/C Paving</li> <li>Fence</li> <li>Elevation Contour</li> </ul> |
|------------------------------------------------------------------------------------------------------------------------------------------------------------------------------------------------------------------------------------------------------------------------------------------------------------------------------------------------------------------------------------|---------------------------------------------------------------------------------------------------------------------------------------------------------------------------------------------------------------------------------------------------------------------------|

- Groundwater Wells**
- Near Surface
  - Chatsworth

- Figure Legend**
- ★ Manhole
  - Sewer Line

**Sewer Line and Manhole Locations  
Group 7 Reporting Area  
SANTA SUSANA FIELD LABORATORY**

Document: RFI-Report-Group7-Bundle-SewerManholes.mxd Date: Jun 12, 2009

1 inch = 75 feet

0 75 150 Feet

**FIGURE G-1**

Sewer/Manhole Inventory Log  
 Manhole Number: B-11  
 Santa Susana Field Laboratory, Ventura County, California

**Inspected by:** Shelby Valenzuela  
**Inspection date:** 3/30/2009

**Location**

RFI Site: RMHF  
 RFI Reporting Group: 7  
 Manhole number: B-10

**Description**

General information: Located on hillside south of RMHF.  
 Depth: 5.75 feet  
 Sewer pipe material: Clay  
 Sewer pipe orientation: North to south from RMHF

**Current Conditions**

Status: Active  
 Sedimentation: None  
 Fluids/solids present: Fluids present; no solids  
 Pipe condition: Good, intact  
 Manhole condition: Good, minor rust, intact

**Comments:**

Flowing water at time of inspection; no detection above background on multigas meter.



Photo 1. Manhole B-11 viewed from the north.

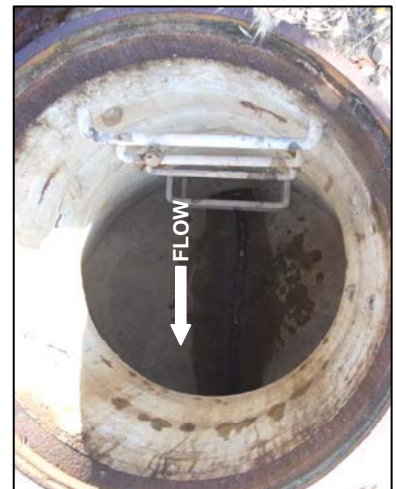


Photo 2. View inside Manhole B-11. Minor rust was observed on metal surfaces. The vitreous clay sewer pipe remains in good condition.

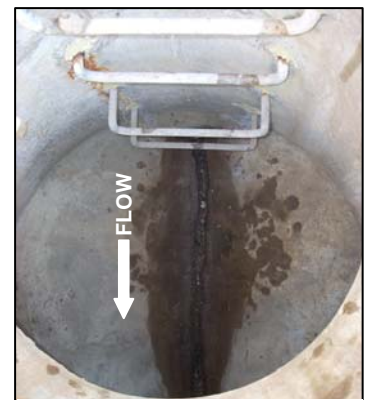


Photo 3. Close up view inside Manhole B-11.

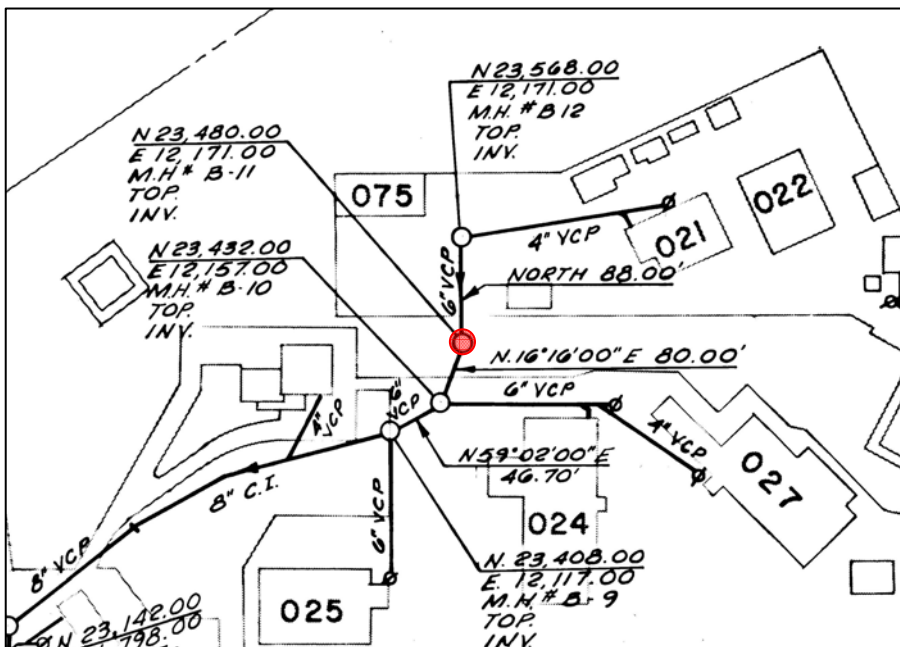


Figure 1. Sewer diagram for B-11 (location represented by red dot).

Sewer/Manhole Inventory Log  
 Manhole Number: B-12  
 Santa Susana Field Laboratory, Ventura County, California

**Inspected by:** Shelby Valenzuela  
**Inspection date:** 3/30/2009

**Location**

RFI Site: RMHF  
 RFI Reporting Group: 7  
 Manhole number: B-12

**Description**

General information: Located on asphalt lot west of B4021.  
 Depth: 5.25 feet  
 Sewer pipe material: Clay  
 Sewer pipe orientation: NE to SW from B4021, North to south to Manhole B-11.



Photo 1. Manhole B-12 viewed from the southwest.

**Current Conditions**

Status: Active  
 Sedimentation: None  
 Fluids/solids present: Fluids present; no solids  
 Pipe condition: Good, intact  
 Manhole condition: Good, minor rust, intact

**Comments:**

Flowing water at time of inspection; no detection above background on multigas meter.

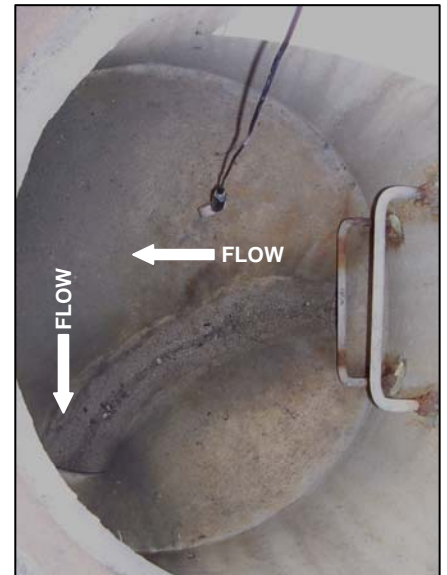


Photo 2. View inside Manhole B-12. Minor rust was observed on metal surfaces. The vitreous clay sewer pipe remains in good condition.

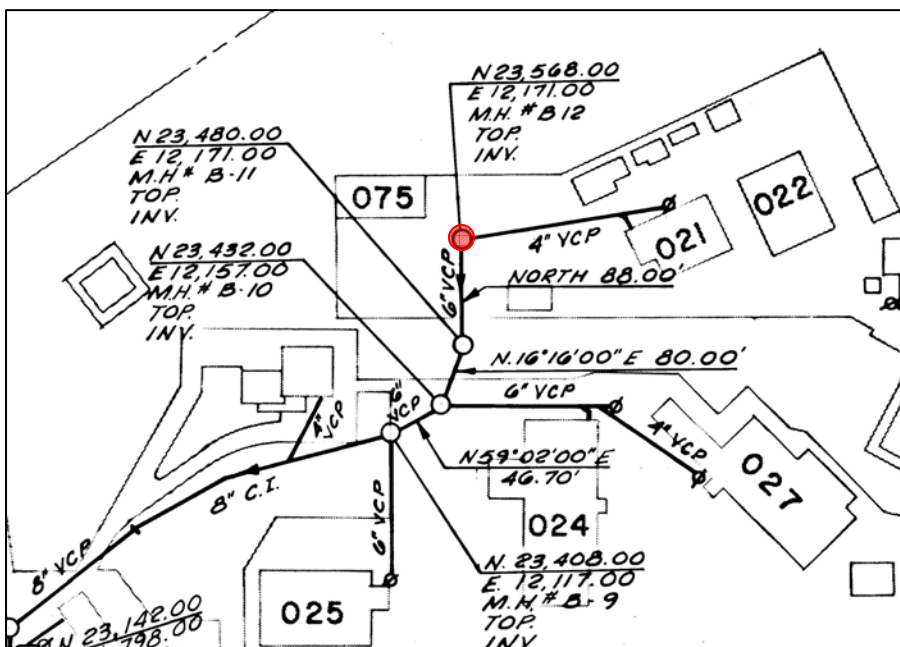


Figure 1. Sewer diagram for B-12 (location represented by red dot).

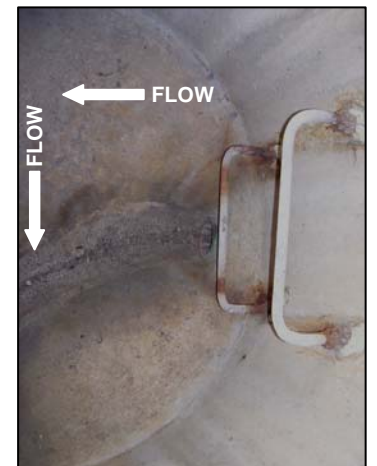


Photo 3. Close up view inside Manhole B-12.