

Hanford Site Welcome

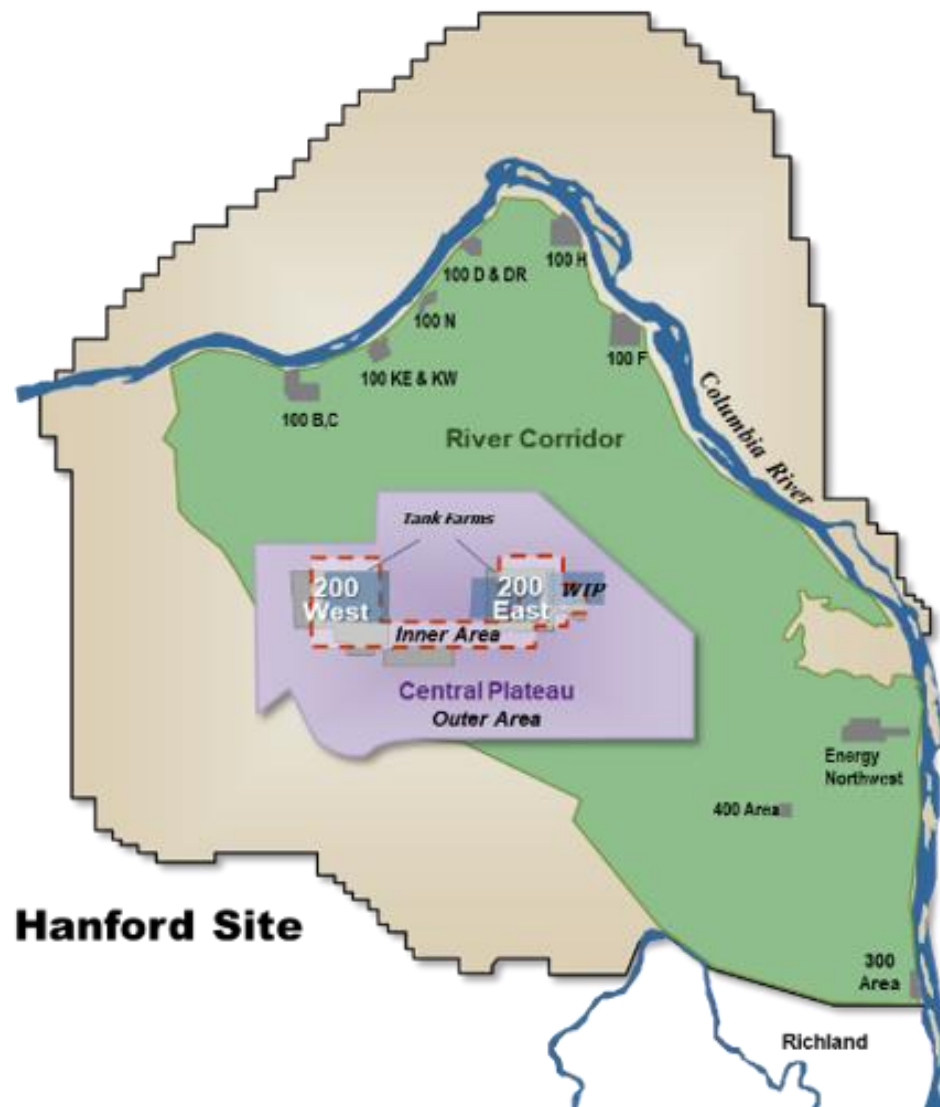
Brian Stickney, Hanford Site Deputy Manager



U.S. DEPARTMENT OF
ENERGY

OFFICE OF
ENVIRONMENTAL
MANAGEMENT

Dedicated to safety. Committed to the environment. | energy.gov/EM





U.S. DEPARTMENT OF
ENERGY

OFFICE OF
**ENVIRONMENTAL
MANAGEMENT**

Narayan Subramanian Advisor to the Secretary of Energy



U.S. DEPARTMENT OF
ENERGY

OFFICE OF
ENVIRONMENTAL
MANAGEMENT

Dedicated to safety. Committed to the environment. | energy.gov/EM



U.S. DEPARTMENT OF
ENERGY

OFFICE OF
**ENVIRONMENTAL
MANAGEMENT**

David Turk

Deputy Secretary of Energy



U.S. DEPARTMENT OF
ENERGY

OFFICE OF
ENVIRONMENTAL
MANAGEMENT

Dedicated to safety. Committed to the environment. | energy.gov/EM



U.S. DEPARTMENT OF
ENERGY

OFFICE OF
**ENVIRONMENTAL
MANAGEMENT**

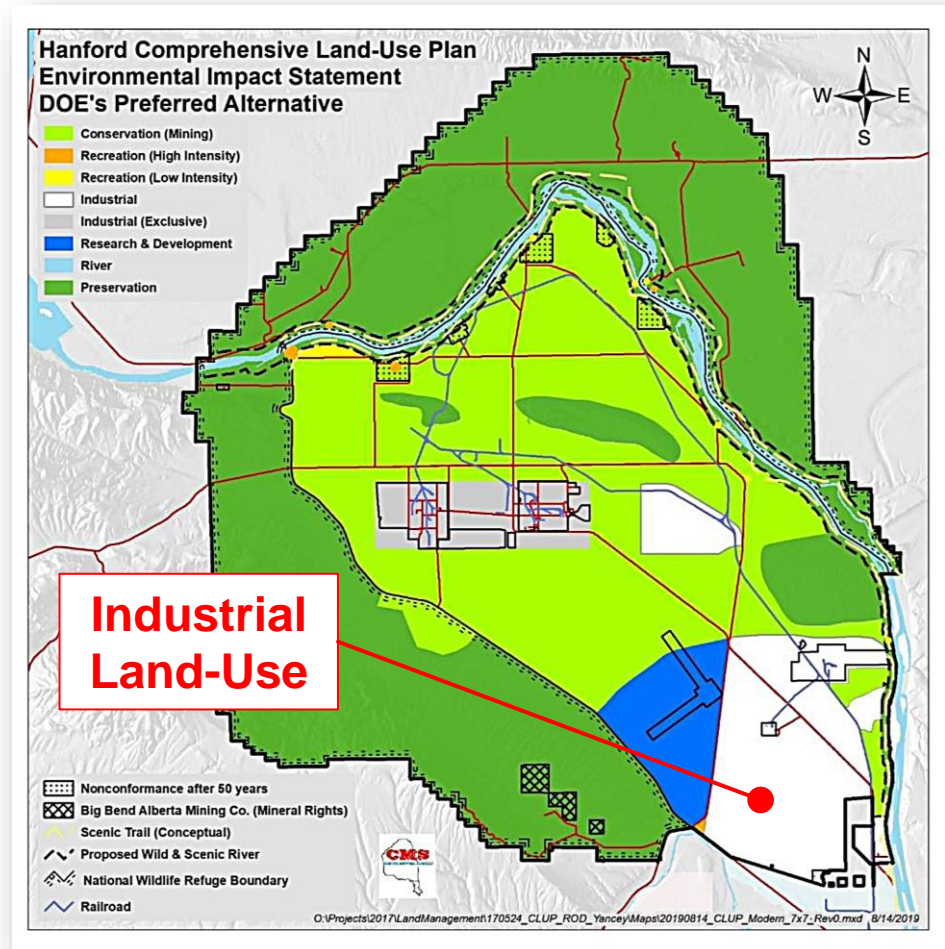
Hanford Site Potential Leasing Area

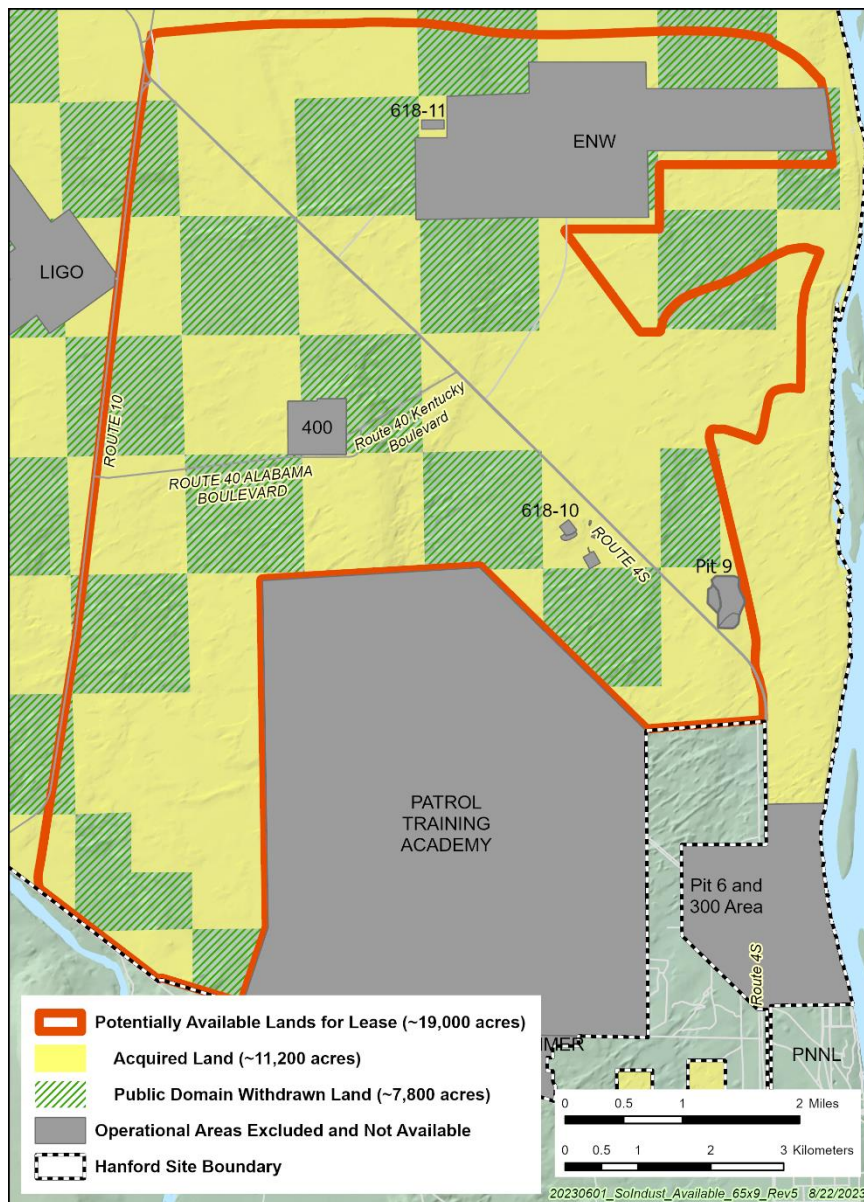
Brian Harkins, Hanford Site
Assistant Manager for Mission Support

Today's goal is to provide information from DOE and to gain information and insight from existing industries related to clean energy projects. Information provided today is subject to change and may be supplemented in the future. Nothing presented is a guarantee or a commitment of a future offering, solicitation or contract with DOE or the U.S. Government. The Government will in no way be bound by information presented today and is providing all information as "general" information only. Any responses to today's presentations are strictly voluntary.

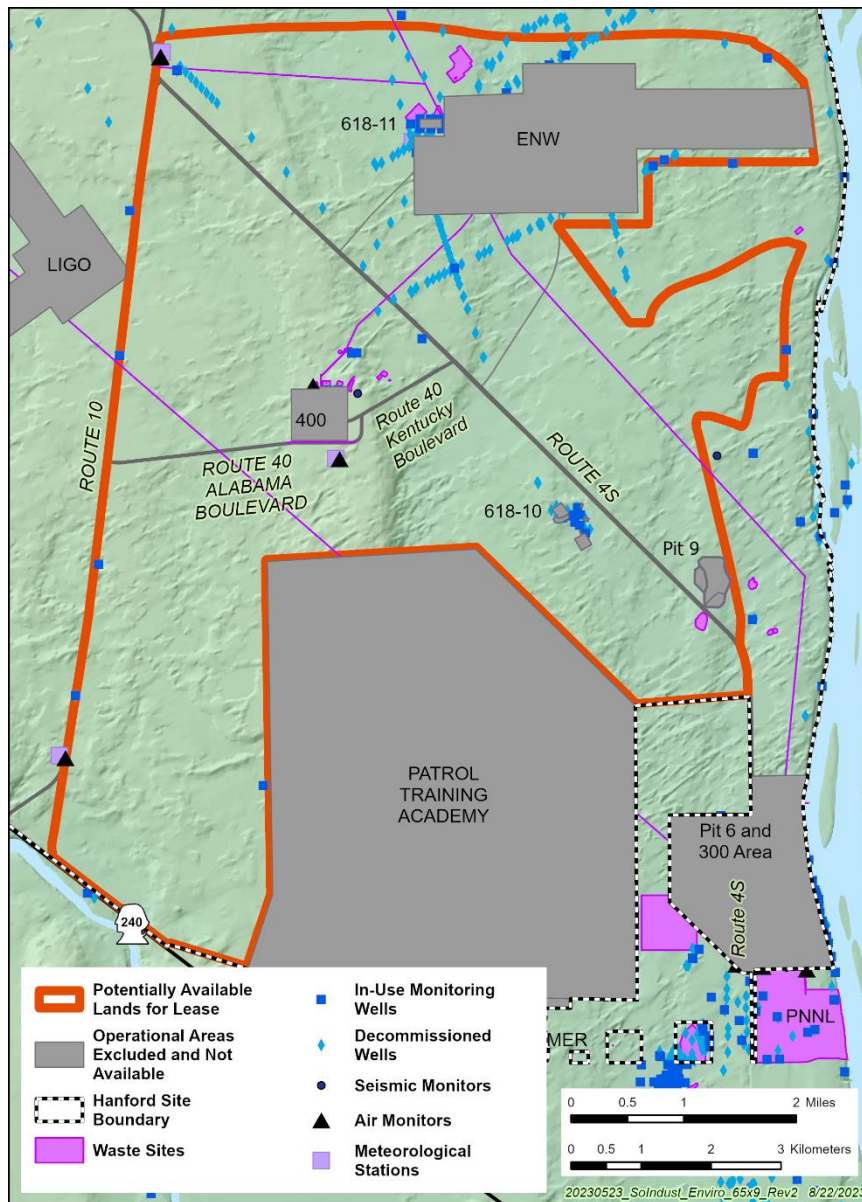
Comprehensive Land-Use Plan Designations

- Most of Hanford Site is designated for conservation and preservation
- Potential leases only available in southern CLUP- designated industrial use area

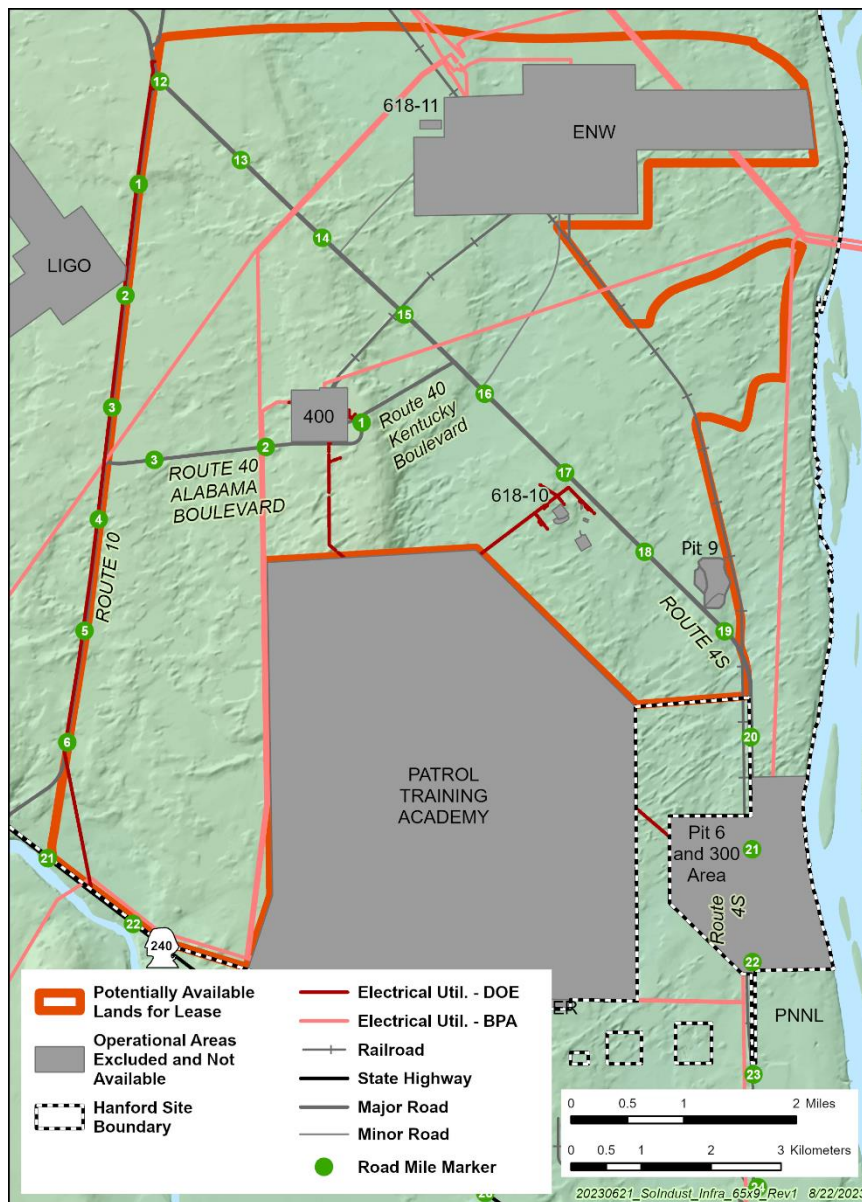




Overall Map of
Potential Leasing Area

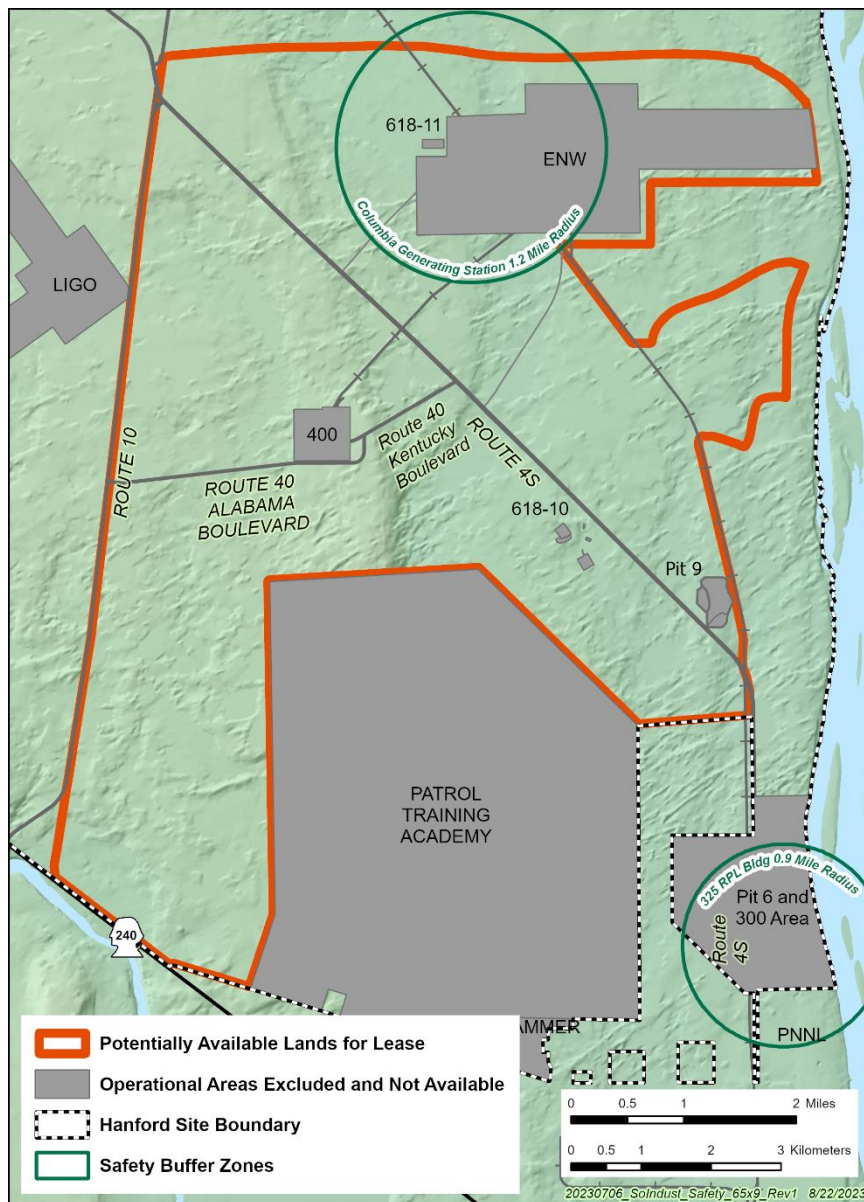


Waste Sites and Environmental Monitoring Map



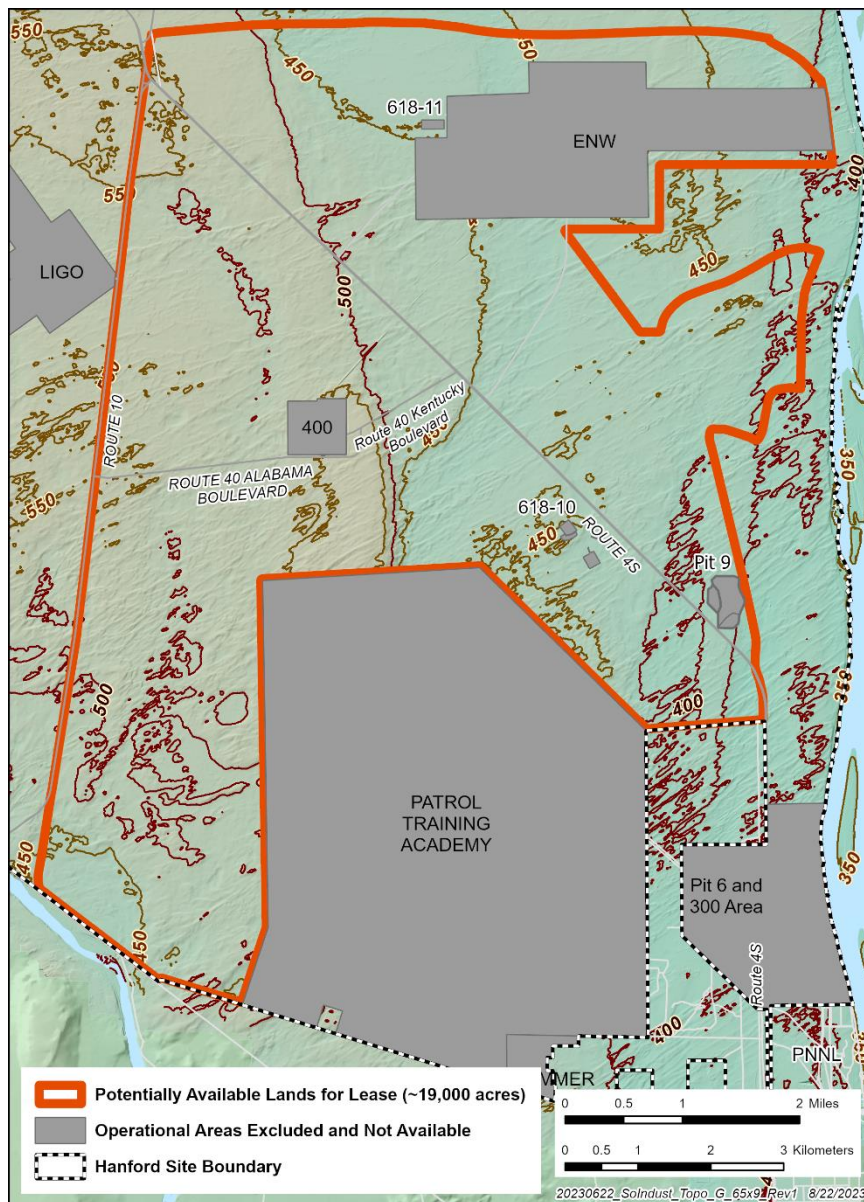
Infrastructure Map



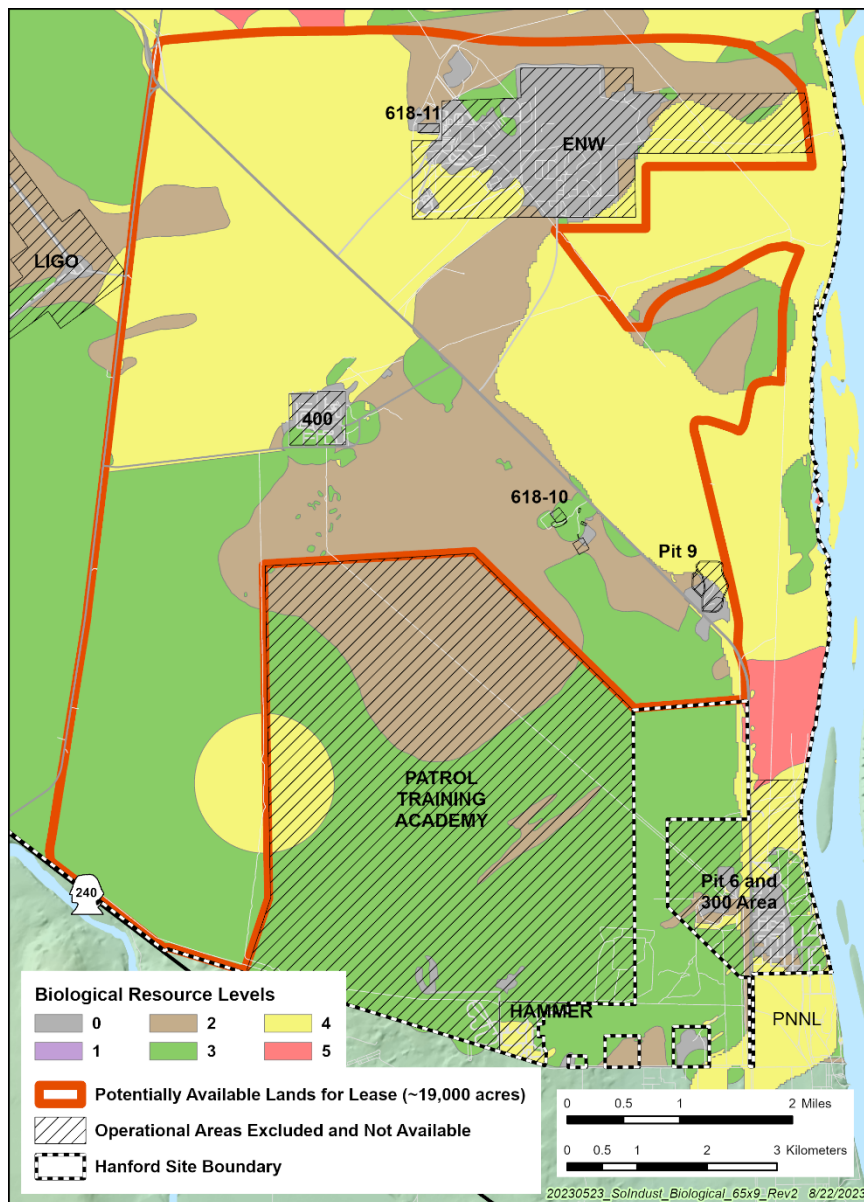


Safety Buffer Zones Map





Topography Map



Ecological Resources Map



Self-Guided Tour

CLEANUP TO CLEAN ENERGY

SELF-GUIDED TOUR

Hanford Site lands under potential consideration for leasing for carbon pollution-free electricity projects are located north of the city of Richland. Portions of the lands can be viewed from a vehicle travelling on Routes 4, 10 and State Highway 240. Foot access is strictly prohibited. Visitors must familiarize with the safety rules and information below.

HANFORD SITE ROADWAYS

- Hanford Site roads are private-use roads owned and maintained by the U.S. Department of Energy for Hanford Site activities.
- Access may be closed or limited by the Department at any time and without notice.
- Visitors are still subject to state and local traffic laws and regulations while on Hanford Site roads.
- Call 911 (or 509-373-0911 from a cell phone) for fire, medical, Hanford Patrol, hazardous material response, or whenever you believe an emergency exists.
- Please avoid using the road during Hanford workforce commute times from 5-7 AM and 4-6 PM.

FOR YOUR SAFETY

Follow the course laid out on the map

Stay on the roadway

Do not exit the vehicle

Follow the posted speed limit and all posted signage

EMERGENCY RESPONSE

Call 911 (or 509-373-0911 from a cell phone) for fire, medical, Hanford Patrol, hazardous material response, or whenever you believe an emergency exists.

SEE REVERSE SIDE FOR LARGER MAP

U.S. DEPARTMENT OF ENERGY

OFFICE OF ENVIRONMENTAL MANAGEMENT

CLEANUP TO CLEAN ENERGY

SELF-GUIDED TOUR MAP

Potential Available Lands for Lease

Primary Public Access Roads

No Public Access Road/Area

Regulatory Processes Required for Potential Leasing Actions



U.S. DEPARTMENT OF
ENERGY

OFFICE OF
**ENVIRONMENTAL
MANAGEMENT**

Key Processes Required

National Environmental Policy Act (NEPA)

Categorical Exclusion (CX): *a category of actions that DOE has determined normally would not individually or cumulatively have potential for significant environmental impacts*

- Completed quickly once sufficient information is available

Environmental Assessment (EA): *a brief analysis to determine whether an EIS is required*

- Maximum 1 year (typically 6–10 months) and 75 pages (+citations and appendices)
- Result: Finding of No Significant Impact (FONSI) or determination to prepare an EIS

Environmental Impact Statement (EIS): *a detailed environmental analysis*

- Prepare if proposed action has a reasonably foreseeable significant effect on the quality of the human environment
- Maximum 2 years (can be extended) and 150 pages or, if extraordinarily complex, 300 pages (+citations and appendices)

DOE's Role - NEPA

- NEPA Compliance Officer
 - <https://www.energy.gov/nepa/articles/doe-nepa-compliance-officers>
- NEPA Document Manager
- DOE determines the type of NEPA review
 - Site- and project-specific
- DOE will independently evaluate all information from applicant
- DOE is responsible for the content
- DOE will provide information on site conditions
 - e.g., land use plans, environmental reports
- DOE will provide information on site activities and operations



Applicant Role - NEPA

- Provide information on the proposal
- Provide objective information on environmental impacts
- Respond timely to requests



NEPA Preparation Options

- DOE determines how the EA or EIS will be prepared
- DOE tasks and pays a contractor
 - <https://www.energy.gov/nepa/doe-wide-nepa-contracting>
- Third-Party Agreement
 - DOE selects and directs work of contractor
 - Applicant pays the contractor
- Applicant prepares
 - Only an option after DOE prescribes procedures
 - DOE is responsible for content

Key Processes Required, continued

National Historic Preservation Act (NHPA) Section 106

- Identify Historic Properties via literature review, field surveys, and during discussions with consulting parties and Tribes (typically 3-6 months)
- Consider effects of proposed project on Historic Properties in consultation with consulting parties and Tribes (typically 3 months)
- Work with consulting parties and Tribes on options to avoid or mitigate adverse effects (typically 3-6 months)

DOE's Role - NHPA

- Federal Archaeologist/Cultural Resources Program Manager
- DOE determines the applicability of NHPA Section 106
- DOE will independently evaluate all information from applicant
- DOE is responsible for the content of the NHPA Section 106 Identification, evaluation and determination of significance or eligibility and whether there would be an adverse effect
- DOE is responsible for defining the appropriate mitigation for adverse effects with consulting parties
- DOE is responsible for signing a Memorandum of Agreement with consulting parties

Applicant Role - NHPA

- Provide information on the proposal
- Respond timely to requests



NHPA Preparation Options

- DOE determines how the NHPA Section 106 documentation will be prepared
- DOE tasks and pays a contractor
- Third-Party Agreement
 - DOE selects and directs work of contractor
 - Applicant pays the contractor
- Applicant prepares
 - Only an option after DOE prescribes procedures
 - DOE is responsible for content
- Applicant pays for mitigation costs

Key Processes Required, continued

- Comprehensive Environmental Response, Compensation and Liability Act Section 120 (h) (approximately 12 months)
 - DOE determines whether hazardous substances are present, status of remediation, mechanisms in place to assure ongoing protection of human health and the environment
 - DOE communicates with the Environmental Protection Agency and Washington State
 - DOE documents, as needed, information/requirements in lease
- DOE Order 458.1, Radiation Protection of the Public and the Environment (approximately 12 months)
 - DOE performs historical site assessment
 - DOE conduct radiological surveys and sampling
 - DOE evaluates results
 - DOE secures Independent Verification
 - DOE finalizes clearance documents

Jeremiah Baumann, DOE Senior Advisor to the Under Secretary and Director of Policy and Implementation, Office of the Under Secretary for Infrastructure



U.S. DEPARTMENT OF
ENERGY

OFFICE OF
ENVIRONMENTAL
MANAGEMENT

Dedicated to safety. Committed to the environment. | energy.gov/EM



U.S. DEPARTMENT OF
ENERGY

OFFICE OF
**ENVIRONMENTAL
MANAGEMENT**

Julie Turner, DOE Pacific Northwest Science Office Manager



U.S. DEPARTMENT OF
ENERGY

OFFICE OF
ENVIRONMENTAL
MANAGEMENT

Dedicated to safety. Committed to the environment. | energy.gov/EM



U.S. DEPARTMENT OF
ENERGY

OFFICE OF
**ENVIRONMENTAL
MANAGEMENT**

Next Steps

Ingrid Kolb, Director of the Office of Management and Chief Sustainability Officer



U.S. DEPARTMENT OF
ENERGY

OFFICE OF
**ENVIRONMENTAL
MANAGEMENT**

Dedicated to safety. Committed to the environment. | energy.gov/EM

What's Next?

- Specific ways to engage are provided in the Request for Information, available to download at [EM Request for Information For Generating Pollution-Free Electricity on the Hanford Site | Department of Energy](#)
- DOE wants to hear from parties with the ability to design, permit, finance, construct, and operate 200 MW or larger CFE generation plants.
- DOE is interested in hearing Tribal and community perspectives on potential collaboration with industry partners towards advancement of CFE goals.
- DOE wants to hear input from Tribes and the community that should be taken under consideration with this CFE initiative.
- **Responses and input should be sent to EMCleanEnergy@em.doe.gov by 4 p.m. Pacific Time, Thursday, Oct. 12, 2023.**
- Following review of responses to the RFI, DOE will announce next steps to identify potential opportunities for CFE generation.
- Updates will be posted at [EM Clean Energy Land Reuse | Department of Energy](#)



U.S. DEPARTMENT OF
ENERGY

OFFICE OF
**ENVIRONMENTAL
MANAGEMENT**

Ike White

Environmental Management

Senior Advisor



U.S. DEPARTMENT OF
ENERGY

OFFICE OF
ENVIRONMENTAL
MANAGEMENT

Dedicated to safety. Committed to the environment. | energy.gov/EM

Thanks for attending!

