

ATTACHMENT K

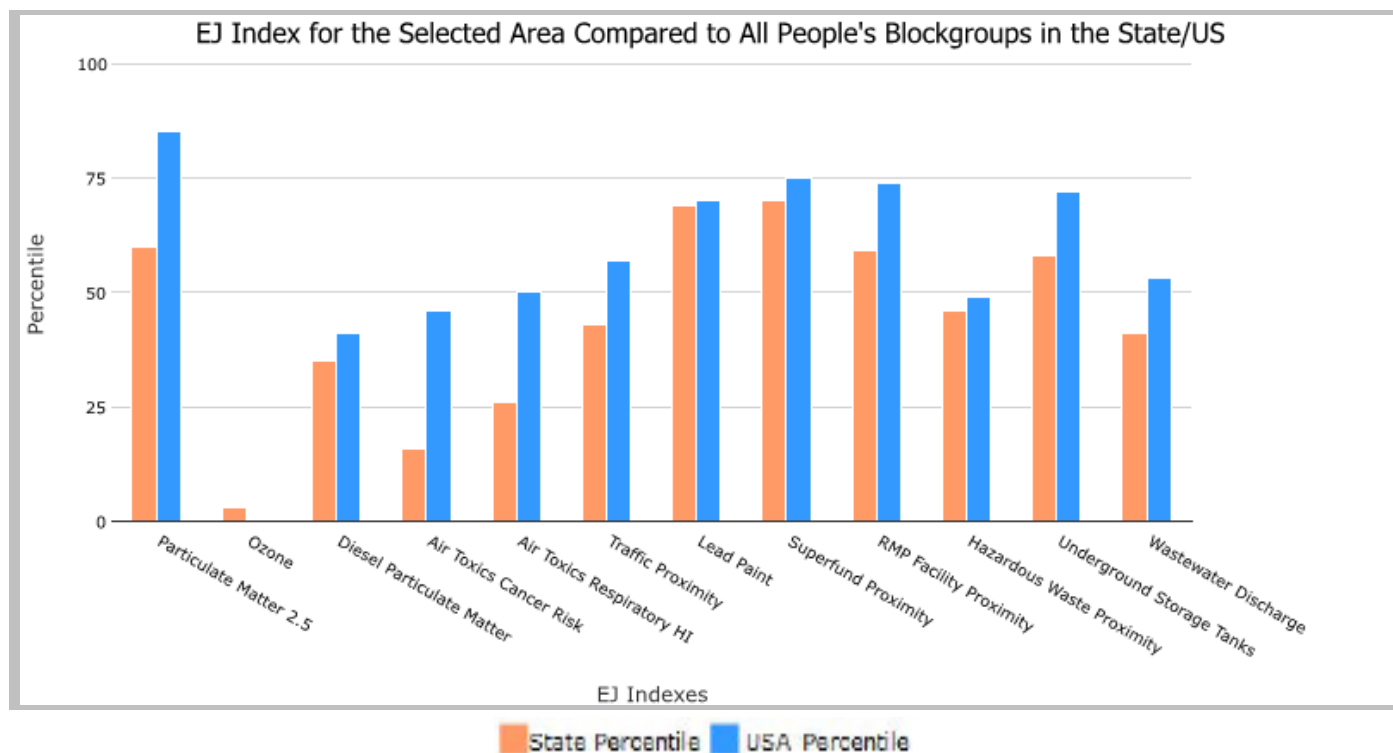
EJScreen Report (Version 2.1)

County: San Patricio, TEXAS, EPA Region 6

Approximate Population: 66,969

Input Area (sq. miles): 707.94

Selected Variables	State Percentile	USA Percentile
Environmental Justice Indexes		
EJ Index for Particulate Matter 2.5	60	85
EJ Index for Ozone	3	0
EJ Index for Diesel Particulate Matter*	35	41
EJ Index for Air Toxics Cancer Risk*	16	46
EJ Index for Air Toxics Respiratory HI*	26	50
EJ Index for Traffic Proximity	43	57
EJ Index for Lead Paint	69	70
EJ Index for Superfund Proximity	70	75
EJ Index for RMP Facility Proximity	59	74
EJ Index for Hazardous Waste Proximity	46	49
EJ Index for Underground Storage Tanks	58	72
EJ Index for Wastewater Discharge	41	53



This report shows the values for environmental and demographic indicators and EJSCREEN indexes. It shows environmental and demographic raw data (e.g., the estimated concentration of ozone in the air), and also shows what percentile each raw data value represents. These percentiles provide perspective on how the selected block group or buffer area compares to the entire state, EPA region, or nation. For example, if a given location is at the 95th percentile nationwide, this means that only 5 percent of the US population has a higher block group value than the average person in the location being analyzed. The years for which the data are available, and the methods used, vary across these indicators. Important caveats and uncertainties apply to this screening-level information, so it is essential to understand the limitations on appropriate interpretations and applications of these indicators. Please see EJSCREEN documentation for discussion of these issues before using reports.

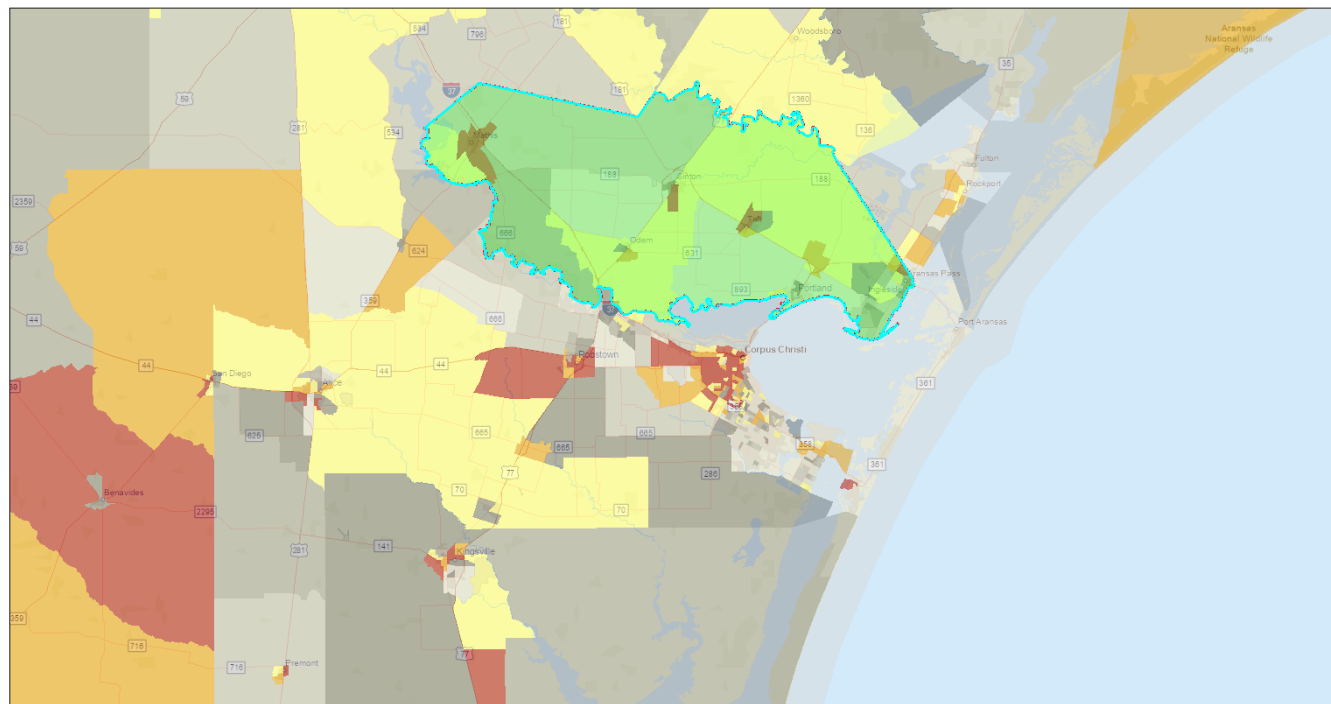
EJScreen Report (Version 2.1)



County: San Patricio, TEXAS, EPA Region 6

Approximate Population: 66,969

Input Area (sq. miles): 707.94



November 29, 2022

Project 1
 Less Than High School Education
 (National Percentiles)
 Less than 50 percentile
 50 - 60 percentile
 60 - 70 percentile
 70 - 80 percentile
 80 - 90 percentile
 90 - 95 percentile
 95 - 100 percentile
 Data not available

1:577,791
 0 5 10 20 mi
 0 10 20 40 km
 Texas Parks & Wildlife, CONANP, Esri, HERE, Garmin, Foursquare, SafeGraph, FAO, METI/NASA, USGS, EPA, NPS

Sites reporting to EPA

Superfund NPL	1
Hazardous Waste Treatment, Storage, and Disposal Facilities (TSDF)	5

EJScreen Report (Version 2.1)

County: San Patricio, TEXAS, EPA Region 6

Approximate Population: 66,969

Input Area (sq. miles): 707.94

Selected Variables	Value	State Avg.	%ile in State	USA Avg.	%ile in USA
Pollution and Sources					
Particulate Matter 2.5 ($\mu\text{g}/\text{m}^3$)	9.61	9.5	46	8.67	78
Ozone (ppb)	26.6	40	2	42.5	0
Diesel Particulate Matter* ($\mu\text{g}/\text{m}^3$)	0.114	0.211	23	0.294	<50th
Air Toxics Cancer Risk* (lifetime risk per million)	20	31	19	28	<50th
Air Toxics Respiratory HI*	0.24	0.35	24	0.36	<50th
Traffic Proximity (daily traffic count/distance to road)	150	570	40	760	41
Lead Paint (% Pre-1960 Housing)	0.17	0.14	67	0.27	44
Superfund Proximity (site count/km distance)	0.12	0.084	82	0.13	73
RMP Facility Proximity (facility count/km distance)	0.76	0.94	61	0.77	68
Hazardous Waste Proximity (facility count/km distance)	0.31	0.72	53	2.2	38
Underground Storage Tanks (count/km ²)	1.9	2.3	56	3.9	58
Wastewater Discharge (toxicity-weighted concentration/m distance)	0.098	0.38	92	12	84
Socioeconomic Indicators					
Demographic Index	50%	46%	57	35%	75
People of Color	62%	59%	54	40%	74
Low Income	38%	33%	59	30%	66
Unemployment Rate	5%	5%	60	5%	59
Limited English Speaking Households	3%	7%	52	5%	69
Less Than High School Education	19%	16%	64	12%	78
Under Age 5	7%	7%	60	6%	69
Over Age 64	15%	13%	60	16%	48

*Diesel particulate matter, air toxics cancer risk, and air toxics respiratory hazard index are from the EPA's Air Toxics Data Update, which is the Agency's ongoing, comprehensive evaluation of air toxics in the United States. This effort aims to prioritize air toxics, emission sources, and locations of interest for further study. It is important to remember that the air toxics data presented here provide broad estimates of health risks over geographic areas of the country, not definitive risks to specific individuals or locations. Cancer risks and hazard indices from the Air Toxics Data Update are reported to one significant figure and any additional significant figures here are due to rounding. More information on the Air Toxics Data Update can be found at: <https://www.epa.gov/haps/air-toxics-data-update>.

For additional information, see: www.epa.gov/environmentaljustice

EJScreen is a screening tool for pre-decisional use only. It can help identify areas that may warrant additional consideration, analysis, or outreach. It does not provide a basis for decision-making, but it may help identify potential areas of EJ concern. Users should keep in mind that screening tools are subject to substantial uncertainty in their demographic and environmental data, particularly when looking at small geographic areas. Important caveats and uncertainties apply to this screening-level information, so it is essential to understand the limitations on appropriate interpretations and applications of these indicators. Please see EJScreen documentation for discussion of these issues before using reports. This screening tool does not provide data on every environmental impact and demographic factor that may be relevant to a particular location. EJScreen outputs should be supplemented with additional information and local knowledge before taking any action to address potential EJ concerns.