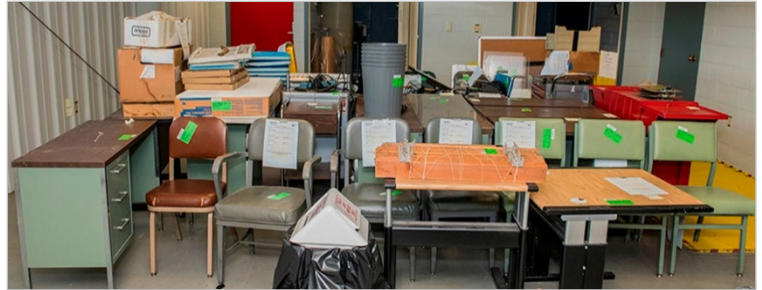


Sustainable Acquisition Success Story

Operations Spotlight on Y-12 National Security Complex

Y-12 Property Accountability Tracking System (PATS)

The Y-12 National Security Complex is a large site that has been operational since the 1940s. Over the years, the site has accumulated a significant amount of property needed for its operations. As new missions developed over the years, new property was needed, and the site realized it needed to put an external and internal property tracking program in place for items no longer needed. This tracking and exchange (in the form of an online inventory and retrieval system), ensures that the items available for reuse are safe, usable, and available for different groups. The system enables materials to be available to other site locations for beneficial use, instead of going to a landfill.



The program developed includes features for tracking and redistributing property. One feature is for robust excess tracking within the Property Accountability Tracking System (PATS), an online database for anyone at Y-12 or the Pantex Plant to excess items they no longer need. Others can then view and claim the item(s) for their use. Y-12 typically has approximately 500 usable excess items, at any given time, in the PAT database, including furniture. Material and equipment requestors are required to review availability of excess in PATS before ordering new products. Anyone with an unwanted item can fill out an excess form, it is tracked, and the item can then go to someone with a need for that item. Y-12 employs a process which enables items that are not reused internally through the PATS excess system, to be made available for reuse externally – through auction or transfer. Another part of the process is CleanSweep, where weekly walk-throughs of the site are conducted, and items are serviced, tracked, or dispositioned for reuse. With the help of key stakeholders, the Y-12 staff (Property, Environmental Safety & Health, Sustainability Stewardship) has seen great results and are finding that many of the “excess” property items can find life beyond their initial use!

Keys to Success

Challenge

Some furniture and property still in good condition was being sent to a landfill.

Solution

A feature of the PATS system enables Y-12 and Pantex to reuse furniture/equipment to meet needs instead of having to purchase something new. This prevents disposal of items to a landfill and avoids purchasing new items.

Results/Benefits

Avoid purchasing costs and less burden on budgets due to the reuse of products and reduced waste being sent to landfills.

Creative Problem Solving

The Property Management team along with other organizations continuously seeks better ways to reduce property waste. Through their combined efforts, they found that utilizing the database would be the most efficient way to acquire and redistribute the excess products.

Key Stakeholders

To ensure implementation success, multiple Y-12 organizations participated (Property, Environmental Safety & Health, Sustainability & Stewardship).

Lessons Learned

The stakeholders that interact with the items must be part of the process - in creating the system and determining how it will function and support the sites.