



U.S. DEPARTMENT OF
ENERGY

OFFICE OF
ENVIRONMENTAL
MANAGEMENT

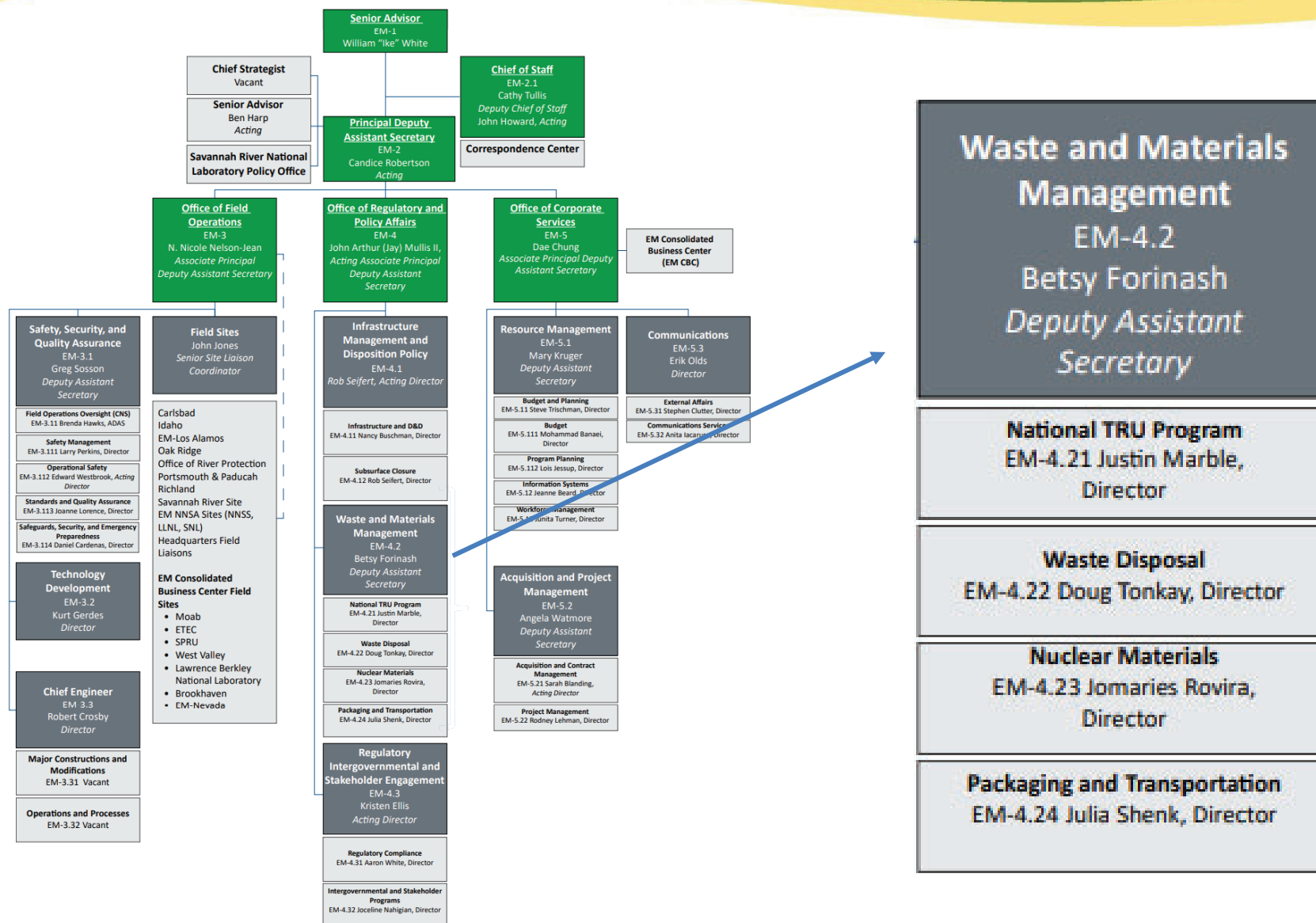
Office of Packaging and Transportation Overview and Key Activities

Julia Shenk
Office Director

EM SSAB Chairs Meeting
September 7, 2022

- Office of Transportation (OPT) overview and programs
- DOE shipping statistics
- Recent accomplishments
- Program-specific highlights
 - Stakeholder outreach
 - Carrier management and evaluations
 - Policy
 - Planning
 - Training

Office of Environmental Management (EM) HQ Organization



OPT Mission

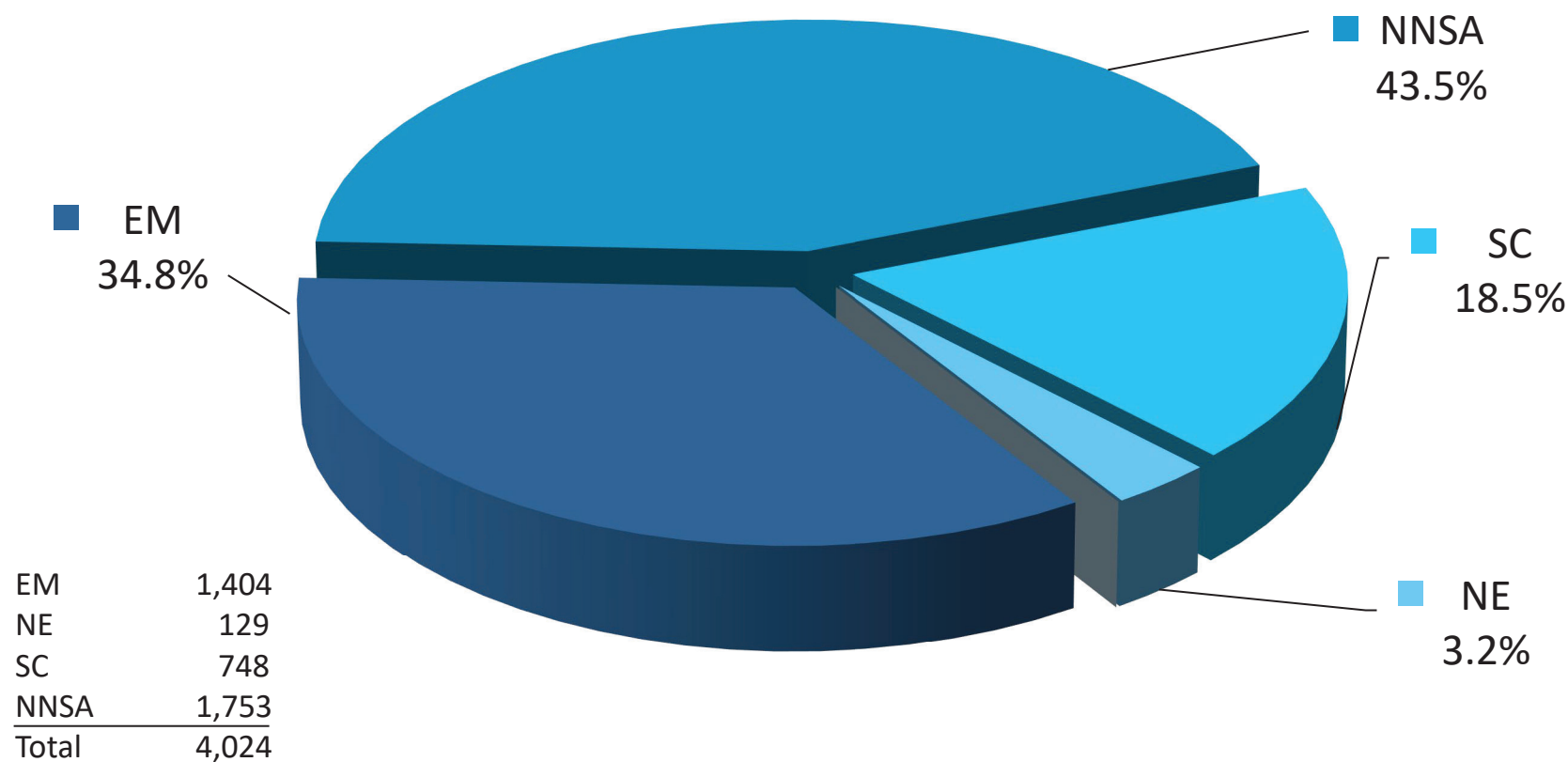
The Office of Packaging and Transportation (OPT) protects people and the environment by ensuring safe, compliant and efficient packaging and transportation of materials. We achieve this mission by conducting packaging and transportation assessments and oversight; assisting field sites; and developing and managing policies, guidance and tools in accordance with DOE requirements and government regulations.



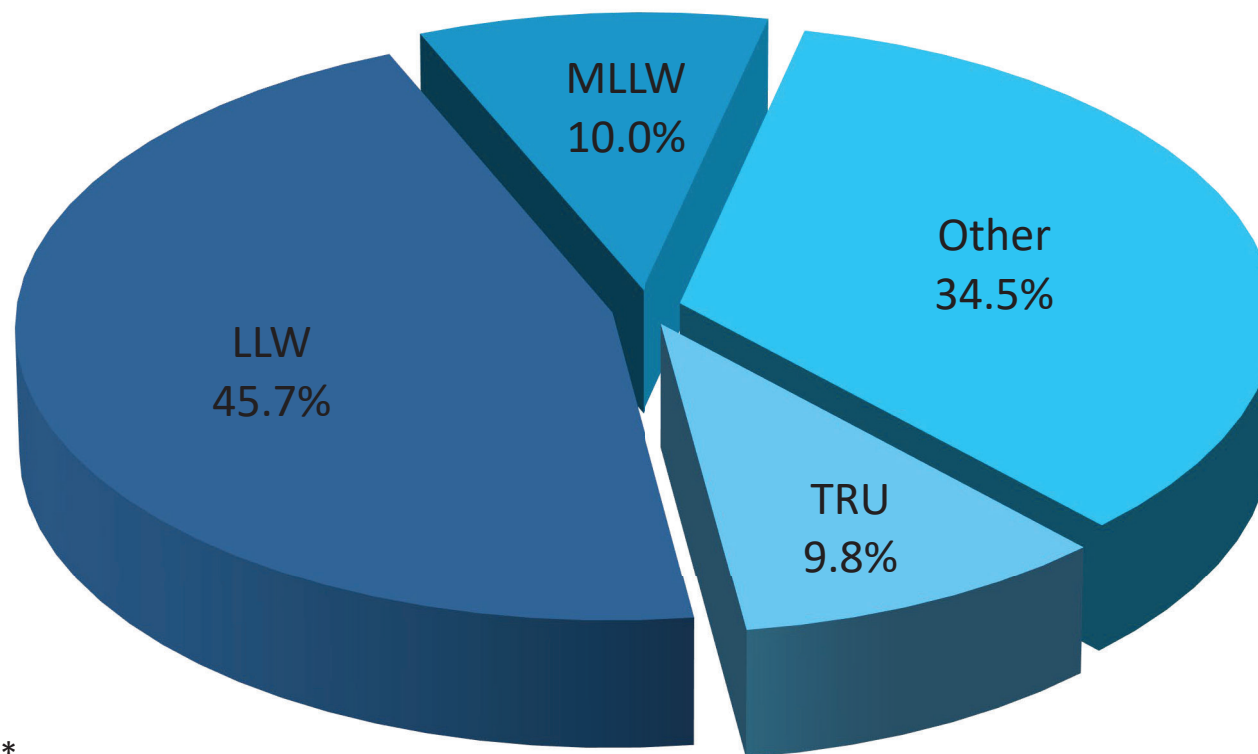
OPT Key Programs & Responsibilities

- **Compliance and safety**
 - Motor Carrier Evaluation Program (MCEP)
 - Transportation Compliance Assurance Program (TCAP) for DOE sites
- **Packaging Certification Program (PCP)**
- **Stakeholder engagement and training**
 - Transportation Emergency Preparedness Program (TEPP)
 - National Transportation Stakeholders Forum (NTSF)
- **Transportation planning and management tools**
 - Multiple software programs facilitating safe and efficient transportation activities by DOE sites
- **Field support**
 - Program support for site transportation managers
 - Transportation Management Council; Packaging Management Council
- **Policy and regulatory support**
 - DOE Orders
 - Engagement with federal regulatory agencies

FY21 DOE Offsite Hazardous Materials Shipments by Program



FY21 EM Waste Materials Shipped



LLW	448*
MLLW	98
TRU	96
Other	338
Total	980**

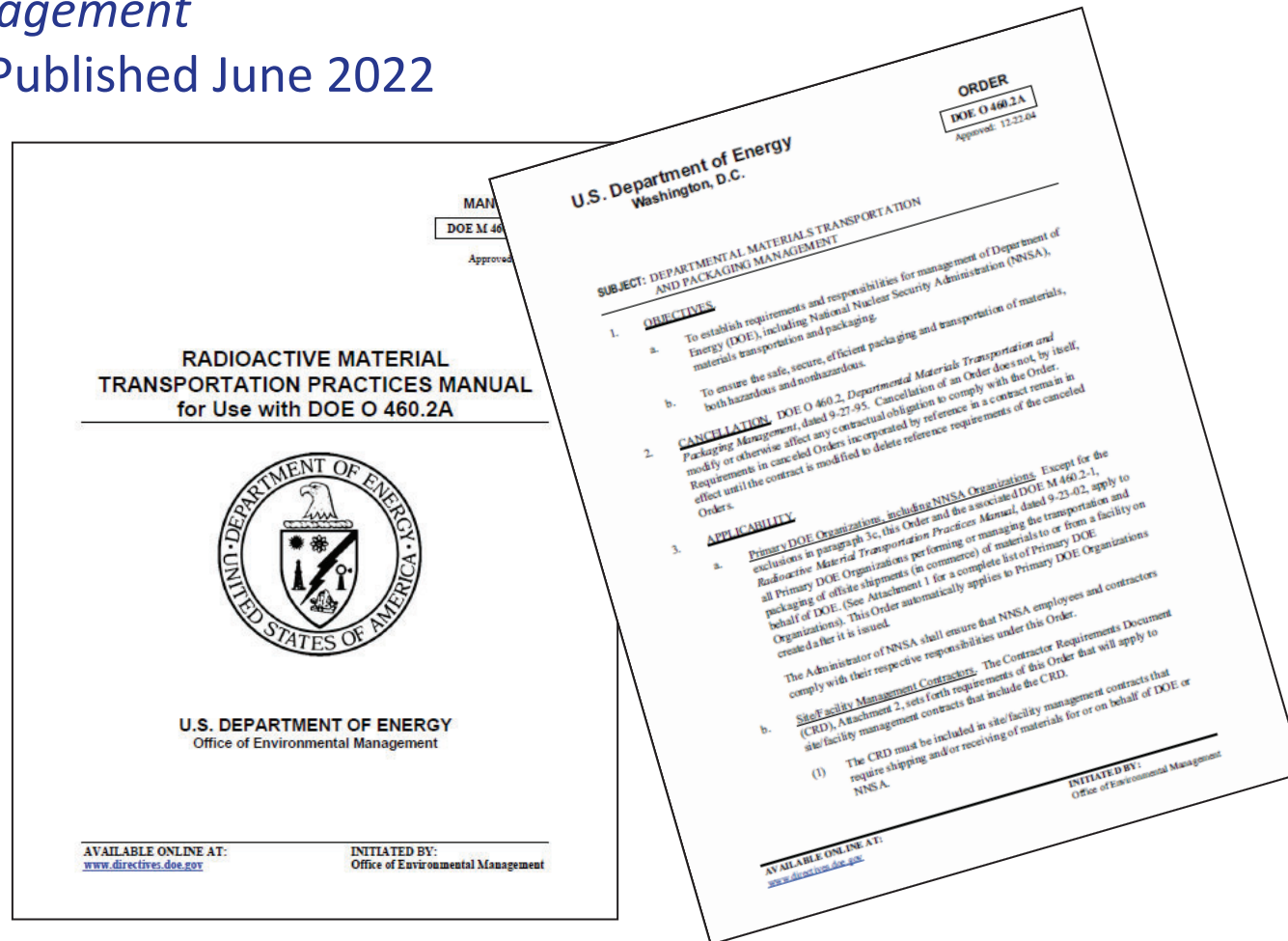
**One shipment may contain multiple materials

Packaging & Transportation FY22 Accomplishments

- Transportation Emergency Preparedness Program (TEPP)
 - Training conducted in 17 states – 42 classes and 1257 students
- Motor Carrier Evaluation Program (MCEP)
 - 13 carrier evaluations completed/in progress
- Packaging Certification Program (PCP)
 - 40+ dockets completed
 - Packaging University courses: 15+ courses completed or scheduled
 - See <https://rampac.energy.gov> for details
- Transportation Compliance Assurance Program (TCAP)
 - Three site transportation assessments completed

Packaging & Transportation FY22 Accomplishments

- Revision of DOE Order 460.2, *Departmental Materials Transportation Management*
 - Published June 2022



National Transportation Stakeholders Forum (NTSF)

- DOE's primary mechanism to communicate with States and Tribes about shipments of radioactive material
- EM solicits State and Tribal input for shipment planning and execution
- Chaired by EM-OPT
- OPT provides funding for NTSF with additional funding and participation from the Office of Nuclear Energy (NE)
- Cooperative agreements with four State Regional Groups and the Tribal Radioactive Materials Transportation Committee (TRMTC)
- Revised website recently developed: <https://www.ntsfi.info/>

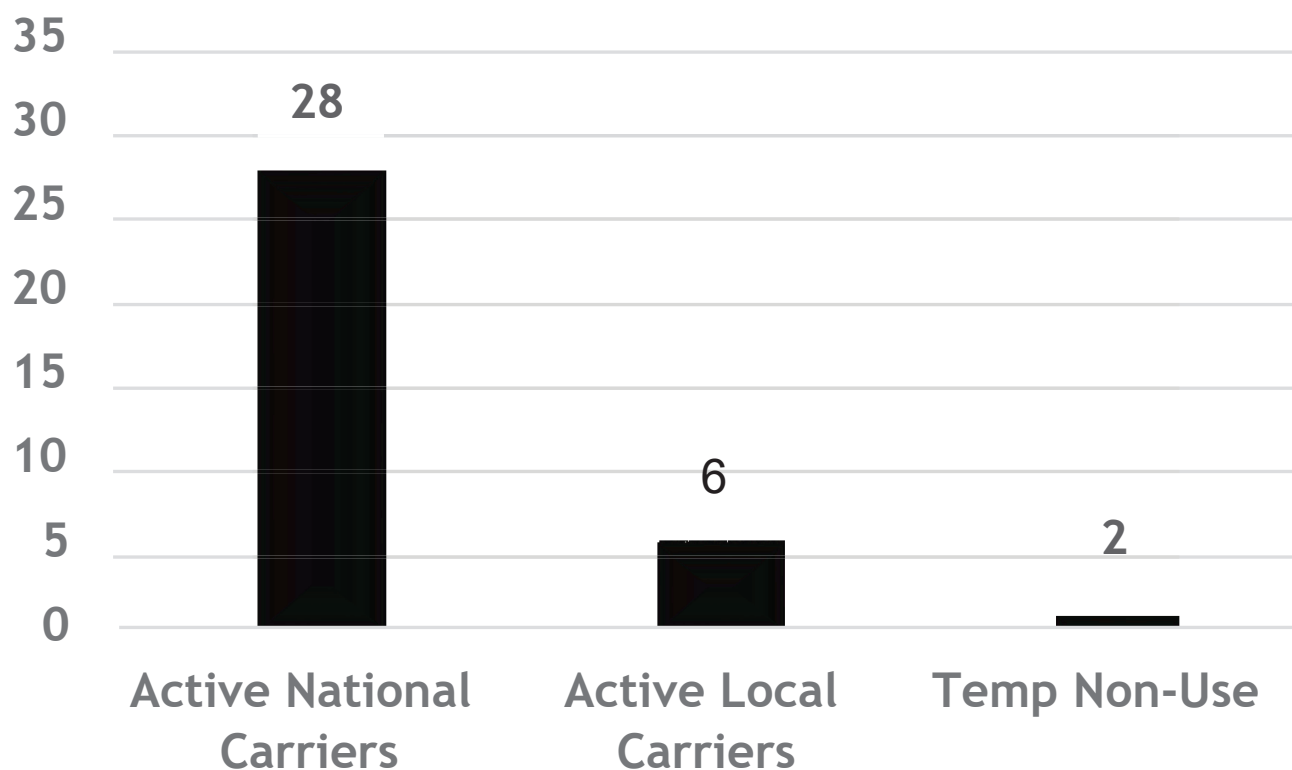
- NTSF Annual Meeting, June 2022
 - First in-person meeting since 2019
 - Approximately 180 attendees from local, State, and Tribal governments as well as other federal agencies
- Webinars on various technical topics throughout the year
- State Regional Groups and TRMTC hold semi-annual meetings
- Multiple ad-hoc working groups including TEPP and spent nuclear fuel rail/routing

Motor Carrier Evaluation Program (MCEP)

- Promotes responsible and safe transport of DOE radioactive materials and hazardous wastes
- MCEP provides a transparent, technically defensible basis for DOE and its contractors to exercise due diligence in selecting and hiring services of for-hire carriers
- 13 evaluations performed in FY22
- Areas of evaluation include:
 - Driver training
 - Drug and alcohol testing programs
 - Security plans
 - Financial security and insurance requirements
 - Review of DOT safety measurements and inspections
 - Equipment maintenance and records

Motor Carrier Evaluation Program (MCEP)

34 Total Active MCEP Carriers (June 2022)



Recent Transportation Engagement: Policy

- Revision of DOE Order 460.2, *Departmental Materials Transportation Management*
 - Through NTSF, State Regional Groups and TRMTC participated in a review period concurrent to DOE's internal process
 - Valuable input provided regarding advance shipment notifications, shipment planning, emergency response, and other requirements
 - DOE EM provided an overview of key changes and topics of interest to stakeholders via webinar
 - Revised Order published in June 2022
 - Available at: [Departmental Materials Transportation Management — DOE Directives, Guidance, and Delegations](#)

Recent Transportation Engagement: Planning

- Prospective Shipment Report (PSR)
 - Bi-annual report produced by DOE EM based on data call to all DOE shipping programs and sites
 - Provides preliminary information on planned high-volume shipments of radioactive waste, transuranic waste, and other high-visibility shipments of possible interest to stakeholders
 - Reports provided to designated State and Tribal officials
 - Intended for use as a planning tool to determine resources needed for inspections, emergency response, accident prevention and public information/outreach
 - Most recent PSR disseminated in June 2022

Recent Transportation Engagement: Emergency Response Training

Transportation Emergency Preparedness Program (TEPP)

- Provides tools for planning, training and exercises, and technical assistance to State and Tribal authorities to prepare for transportation incidents involving DOE radioactive material shipments
- Key component is first responder training provided at no cost to jurisdictions along DOE shipping routes
- So far in FY22, training conducted in 17 states – 42 classes and 1257 students
- Extensive engagement with State of Wyoming, including needs assessments, training, and tabletop exercises



Julia Shenk
301-903-1388

julia.shenk@em.doe.gov



AskPAT@hq.doe.gov