



Enterprise Geospatial Program

Kyle Brown, kyle.brown@lm.doe.gov
Annette Moore, annette.moore@lm.doe.gov

BETTER DATA, SMARTER DECISIONS THROUGH A STRONG GEOSPATIAL FRAMEWORK

Central Storage of LM Geospatial Imagery and Data

- Combines disparate data.
- Supports data discovery, multi-user editing, and backup.
- Enables efficient governance of geospatial data.

Securing LM Geospatial Imagery, Data, Maps, and Applications

- Single sign-on gives efficient access.

GIS Portals and Systems Integration

- LM Enterprise GeoPortal.
- Provides primary access point for geospatial data.
- Enables sharing of geospatial data.
- Can integrate data from multiple systems.

Consolidating the LM Enterprise GIS Function

- Centrally supported GIS staff.

Requirements and Risk Reduction

- Designed to meet the requirements of the Geospatial Data Act of 2018.

PRACTICAL APPLICATIONS OF GEOSPATIAL DATA

- Site inspections.
- Change detection.
- Earthquake and wildfire monitoring.
- Data-visualization management.
- Containment mapping.
- Engineering design.
- Site history.
- Stakeholder communication.
- Hazard identification and mapping.
- Invasive species mitigation.
- Asset management web maps.
- Ecological conditions.
- Ongoing operations.
- Site features navigation.
- Cultural resource.
- Site knowledge transfer.
- Informed decision-making.



The LM ArcGIS Online Site can be accessed by scanning the QR code or via a web browser by using the following address:
<https://doe-lm.maps.arcgis.com/home/index.html>

DATA BY THE NUMBERS



330,000+
Site Features



275+
Feature Types



220+
Imagery Data Sets

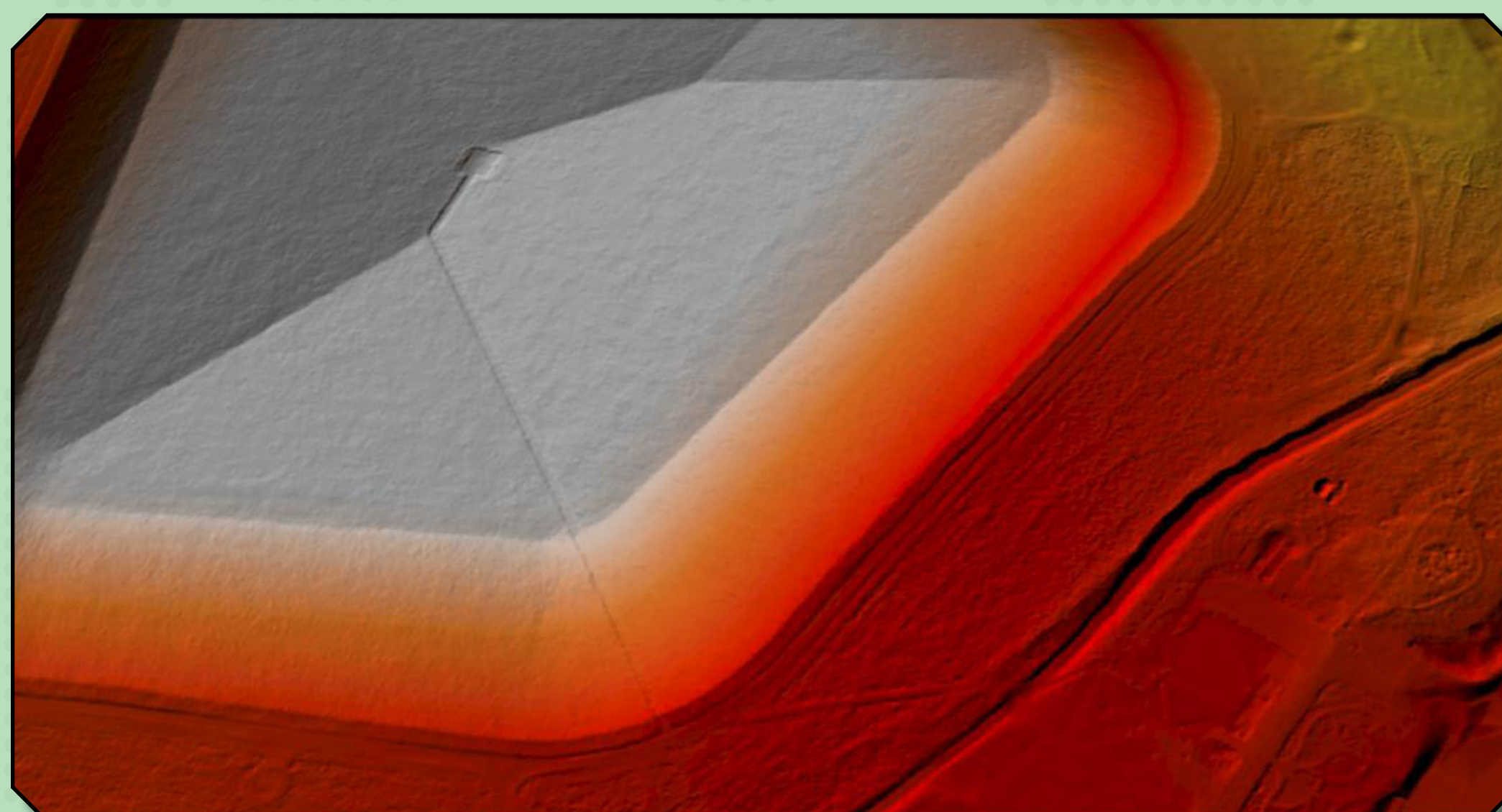


275+
Elevation Models

KEY GEOSPATIAL SERVICES

ESDM manages LM's Enterprise GIS and authoritative geospatial data repository. Services include:

- Geospatial data systems/support.
- CAD and GIS.
- Official maps and figures.
- Consolidated geospatial database.
- Geospatial data management.
- Data integration.
- GeoPortal interactive web maps.
- Aerial survey support.
- Data governance and analysis.



Elevation model of Weldon Spring Site, Missouri, derived from an aerial lidar survey.